



**CITY OF FOREST PARK**  
**URBAN REDEVELOPMENT AUTHORITY REGULAR MEETING**

Thursday, December 16, 2021, at 6:00 PM  
Council Chambers

**Website:** [www.forestparkga.gov](http://www.forestparkga.gov)  
**Phone Number:** (404) 363.2454

**ECONOMIC DEVELOPMENT**  
745 Forest Parkway  
Forest Park, GA 30297

## AGENDA

**Angelyne Butler**, *Chairwoman*  
**Steve Bernard**, *Vice Chairman*  
**Ed Taylor**, *Secretary*  
**Nachae Jones**, *Member*  
**Eric Stallings**, *Member*  
**Jacklyn Faith**, *Member*  
**Nancy Howard**, *Member*

### MEETING NOTICE:

*Due to COVID-19, CDC requirements of Masks and Social Distancing will be adhered.*

### CALL TO ORDER/WELCOME:

### ROLL CALL:

### APPROVAL OF MINUTES:

1. Approval of Minutes from Urban Redevelopment Authority Regular Meeting September 23, 2021
2. Approval of Minutes from Urban Redevelopment Authority Special Called Meeting November 4, 2021

### OLD BUSINESS:

### NEW BUSINESS:

3. Economic Development Update
4. Relocation of Robinson Weeks Trailers
5. Traffic Study

6. Building 700 Site Plan & Easements

**EXECUTIVE SESSION:**

*(Executive Session may be called for issues concerning Personnel, Litigation or Real Estate)*

**ADJOURNMENT:**

*In compliance with the Americans with Disabilities Act,  
those requiring accommodation for meetings should notify  
the City Clerk's Office at least 24 hours prior to the meeting at 404-366-1555.*



**CITY OF FOREST PARK**  
**URBAN REDEVELOPMENT AUTHORITY REGULAR MEETING**

Thursday, September 23, 2021, at 6:00 PM  
Council Chambers

**Website:** [www.forestparkga.gov](http://www.forestparkga.gov)  
**Phone Number:** (404) 363.2454

**ECONOMIC DEVELOPMENT**  
745 Forest Parkway  
Forest Park, GA 30297

**MINUTES**

**Angelyne Butler, Chairwoman**  
**Steve Bernard, Vice Chairman**  
**Ed Taylor, Secretary**  
**Nachae Jones, Member**  
**Eric Stallings, Member**  
**Jacklyn Faith, Member**  
**Nancy Howard, Member**

**CALL TO ORDER/WELCOME:**

The meeting was called to order at 6:14 PM.

**Swearing in of New Members:**

Jacklyn Faith and Nancey Howard were sworn in as members of the Urban Redevelopment Authority Board by Chairwoman Angelyne Butler.

**ROLL CALL:**

Angelyne Butler  
Steve Bernard  
Ed Taylor  
Nachae Jones  
Eric Stallings  
Jacklyn Faith  
Nancy Howard

**Also Present:**

Dr. Antoine Cooper, City Manager  
Mike Williams, City Attorney  
Kisha Bundridge, Economic Development Coordinator

**APPROVAL OF MINUTES:**

1. Approval of Urban Redevelopment Authority Regular Meeting Minutes 6/24/21
2. Approval of Urban Redevelopment Authority Regular Meeting Minutes 7/29/21

Ed Taylor made a motion to group Meeting Minutes for the Urban Redevelopment Authority for June 24, 2021, and July 29, 2021, and approve as is.

Nachae Jones seconded.

Roll call for approval. Approved unanimously.

**OLD BUSINESS:**

3. Robinson Weeks Partners- Gillem Economic Update

As shown in the fact sheet that was shared, the Gillem logistics center kicked off in 2007 and took seven years to get off the ground. Kroger bought land in 2014, replacing many of the jobs lost due to the closing of the army base. There have since been billions of dollars' worth of investment in Ft. Gillem. The tax revenue will start collecting taxes close to \$4 million starting next year.

Next month the delivery services will begin. This Kroger facility does as much volume as three of their stores. Amazon's soft opening is October 6, 2021.

Chairwoman, Angelyne Butler pointed out that Forest Park is rated in the top 2 locations with a successful army transfer.

**NEW BUSINESS:**

4. Discussion: Social Media Specialist

Nachae Jones made a motion to table the Social Media Specialist discussion.

Nancy Howard seconded.

Roll call for approval. Approved unanimously.

**EXECUTIVE SESSION:**

(Executive Session may be called for issues concerning Personnel, Litigation or Real Estate)

Ed Taylor made a motion to recess the regular meeting and go into Executive Session at 6:22 PM.

Steve Bernard seconded.

Roll call for approval. Approved unanimously.

Ed Taylor made a motion to end Executive Session and resume the regular meeting at 7:30 PM.

Eric Stallings seconded.

Roll call for approval. Approved unanimously.



**ADJOURNMENT:**

Eric Stallings made a motion to adjourn the regular meeting for the Urban Redevelopment Authority at 7:30 PM.

Ed Taylor seconded.

Roll call for approval. Approved unanimously.

*In compliance with the Americans with Disabilities Act,  
those requiring accommodation for meetings should notify  
the City Clerk's Office at least 24 hours prior to the meeting at 404-366-1555.*



**CITY OF FOREST PARK**  
**URBAN REDEVELOPMENT AUTHORITY SPECIAL CALLED MEETING**

Thursday, November 04, 2021, at 6:00 PM  
Council Chambers

**Website:** [www.forestparkga.gov](http://www.forestparkga.gov)  
**Phone Number:** (404) 363.2454

**ECONOMIC DEVELOPMENT**  
745 Forest Parkway  
Forest Park, GA 30297

**MINUTES**

**Angelyne Butler, Chairwoman**  
**Steve Bernard, Vice Chairman**  
**Ed Taylor, Secretary**  
**Nachae Jones, Member**  
**Eric Stallings, Member**  
**Jacklyn Faith, Member**  
**Nancy Howard, Member**

**CALL TO ORDER/WELCOME:**

The meeting was called to order at 6:22 PM.

**ROLL CALL:**

Angelyne Butler  
Steve Bernard  
Ed Taylor  
Nachae Jones

**Absent:**

Eric Stallings  
Jacklyn Faith  
Nancy Howard

**Also Present:**

Mike Williams, City Attorney  
Bruce Abraham, Economic Development Director  
Kisha Bundridge, Economic Development Coordinator  
Robinson Weeks

**APPROVAL OF MINUTES:**

1. Approval of Meeting Minutes from September 23, 2021

Ed Taylor made a motion to table the minutes for the Urban Redevelopment Authority Regular Meeting Minutes for September 23, 2021.

Nachae Jones seconded.

Roll call for approval. Approved unanimously.

**OLD BUSINESS:****NEW BUSINESS:****Economic Development Department Update**

2. Economic Development Department Update

Ed Taylor made a motion to table the Economic Development Department Update.

Steve Bernard seconded.

Roll call for approval. Approved unanimously.

**Rateree Road Construction Update**

3. Rateree Road Construction Update

Bruce Abraham explained that the Rateree Road Construction project is a \$1.3 million project expected to be finished by Thanksgiving 2021. The Rateree Road extension will allow Kroger and Amazon passage for their vehicles.

4. Traffic Study

Steve Bernard made a motion to table the Traffic Study discussion.

Ed Taylor seconded.

Roll call for approval. Approved unanimously.

5. Veteran's Memorial

Sparkle Adams, who served 25 years in the Air Force and Air Force Reserve, shared that there are challenges veterans face. Ms. Adams will be inducted into the GA Military Veteran's Hall of Fame and feels that veterans have a hard time getting their benefits and being recognized. She said that families whose loved ones served but aren't buried in the National Cemetery, are forgotten Sparkle Adams feels there is a great opportunity in Ft. Gillem to place a veteran's cemetery and memorial.

Steve Bernard asked what specifically was being proposed- a burial plot, statue, or memorial. Sparkle Adams suggested turning one of the buildings at Ft. Gillem into a museum- an Arlington of the South that can be a tourist attraction.

Chairwoman Angelyne Butler asked if the owner's association would allow for a memorial/ graveyard. City Attorney, Mike Williams explained that zoning does not allow for burial sites, we would have to have the area rezoned, but a memorial could be figured out. Army convenience would prevent building a cemetery, but a memorial could be done.

The board would like to direct staff to see what is permissible regarding a memorial at Ft. Gillem.

**EXECUTIVE SESSION:** *(Executive Session may be called for issues concerning Personnel, Litigation or Real Estate)*

Ed Taylor made a motion to recess the Regular meeting and go into Executive Session at 6:33 PM.

Steve Bernard seconded.

Roll call for approval. Approved unanimously.

Ed Taylor made a motion to end Executive Session and go back into the Regular session of the Special Called Meeting at 7:00 PM.

Steve Bernard seconded.

Roll call for approval. Approved unanimously.

Based on the discussion during Executive Session, Ed Taylor made a motion to approve the two letters of intent for the 59 acres of property near Steven's Lake in Ft. Gillem.

Nachae Jones seconded.

Roll call for approval. Approved unanimously.

Based on the discussion during Executive Session, Nachae Jones made a motion to approve the project with Blue Star Studio for 14 acres of property at Ft. Gillem.

Ed Taylor seconded.

Roll call for approval. Approved unanimously.

**ADJOURNMENT:**

Ed Taylor made a motion to adjourn the special called meeting for the Urban Redevelopment Authority at 7:02 PM.

Steve Bernard seconded.

Roll call for approval. Approved unanimously.

*In compliance with the Americans with Disabilities Act,  
those requiring accommodation for meetings should notify  
the City Clerk's Office at least 24 hours prior to the meeting at 404-366-1555.*



ROBINSON | WEEKS  
PARTNERS

**Gillem Logistics Center  
Building 700  
URA Approval Package**



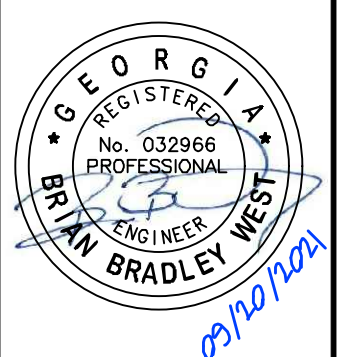
**ROBINSON | WEEKS**  
PARTNERS





No.	ISSUANCE AND REVISION DESCRIPTIONS	DATE	BY

**GILLEM 700**  
 2135 ANVIL BLOCK ROAD  
 FORT GILLEM  
 FOREST PARK, GA 30294  
 LAND LOT 205 & 212, 12TH DISTRICT  
 PARCEL ID: 12178 207001



GSWCC NO. 0000062135  
 (LEVEL II)  
 DRAWN BY AZ  
 DESIGNED BY DL  
 REVIEWED BY BW  
 DATE 12/06/2021  
 PROJECT NO. 013556008

TITLE  
**OVERALL SITE PLAN**

SHEET NUMBER  
**C2-00**

**DEVELOPMENT SUMMARY:**

SITE SUMMARY	
ZONING	GZ - GILLEM ZONING DISTRICT
PROPOSED USE	WAREHOUSING
BUILDING AREA	169,250 SF
SITE AREA	14.74 ACRES
DISTURBED AREA	12.98 ACRES
PROPOSED IMPERVIOUS	8.97 ACRES
BUILDING SETBACK	
FRONT	55 FT (MAJOR STREET)
SIDE	0 FT
BACK	0 FT
PARKING SUMMARY	
TRAILER PARKING	34 SPACES
EMPLOYEE PARKING	181 SPACES

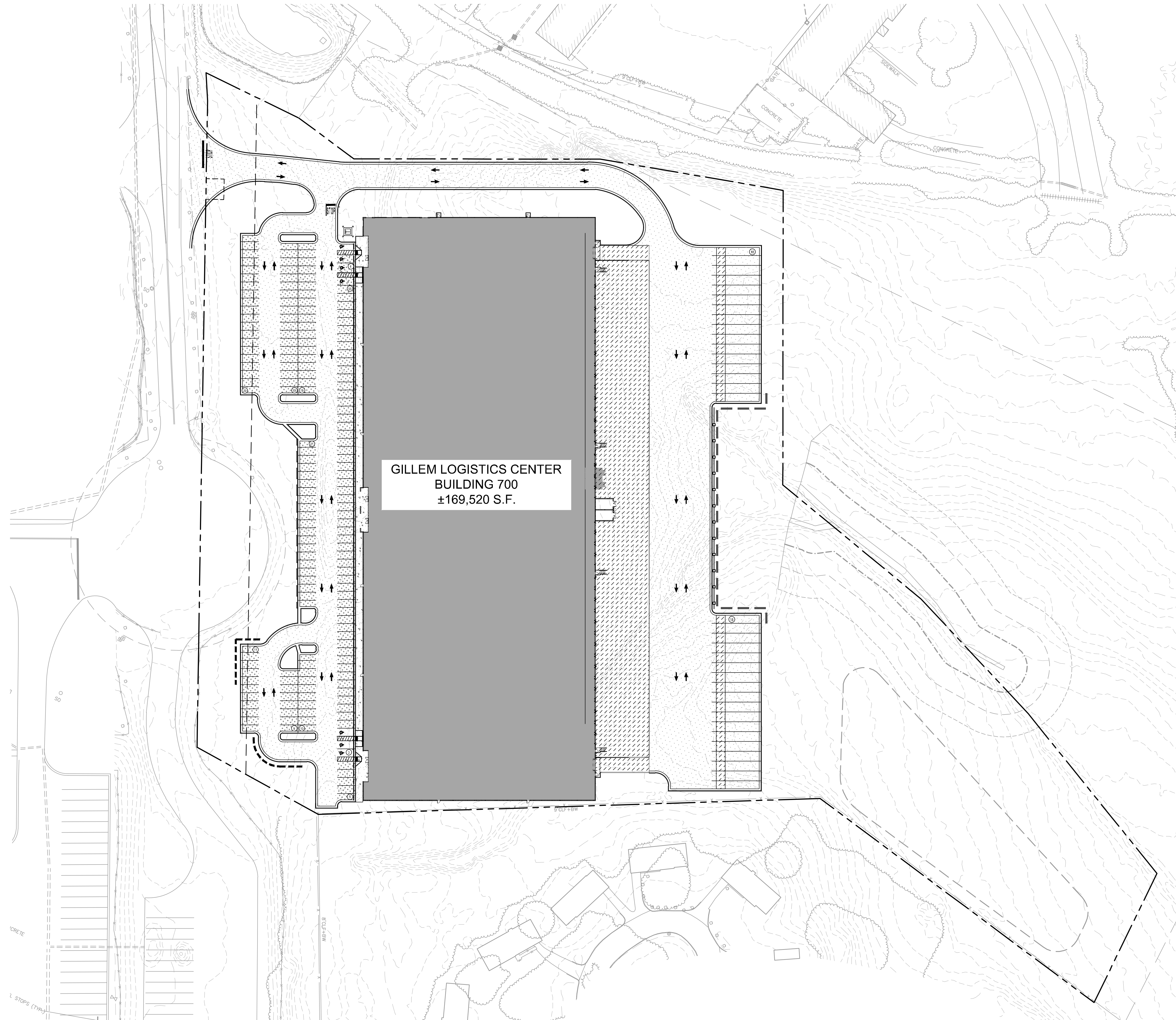
- SITE NOTES:**
1. THE PROPOSED BUILDING INFORMATION SHOWN HEREON IS FROM AN ELECTRONIC FILE PROVIDED BY RANDALL-PAULSON ARCHITECTS, INC. DATED 07/23/2021 AND IS FOR ILLUSTRATIVE PURPOSES ONLY. CONTRACTOR SHALL REFERENCE ARCHITECTURAL PLANS FOR EXACT BUILDING INFORMATION.
  2. EXISTING CONDITIONS SHOWN HEREON ARE FROM A SURVEY FILE PROVIDED BY VALENTINO & ASSOCIATES, INC., DATED 02/04/2021.
  3. ALL DIMENSIONS ARE FROM FACE OF CURB TO FACE OF CURB UNLESS OTHERWISE NOTED.
  4. SIDEWALK INSTALLED AGAINST BACK OF CURB SHALL BE INSTALLED PER THE PLAN AS MEASURED FROM THE BACK OF CURB.
  5. ALL SIGNAGE AND STRIPING MUST MEET THE LATEST REQUIREMENTS SET FORTH BY MUTCD, GDOT, AND GEORGIA STATE CODE.
  6. REFERENCE LANDSCAPE PLANS FOR ALL HARDSCAPE AND LANDSCAPE DETAILS AND SPECIFICATIONS.

**SITE PLAN LEGEND:**

	PROPERTY LINE
	25' STREAM BUFFER
	50' STREAM BUFFER
	75' STREAM BUFFER
	BUILDING SETBACK

**PAVEMENT LEGEND:**

	STANDARD DUTY ASPHALT PAVEMENT
	HEAVY DUTY ASPHALT PAVEMENT
	HEAVY DUTY CONCRETE PAVEMENT
	STANDARD DUTY CONCRETE PAVEMENT



Drawing name: K:\ALP\_P\013556008\_gillem\_700\CAD\plansheets\C2-00 - SITE PLAN.dwg OVERALL SITE PLAN Dec 07, 2021 10:12am by: Kelli Bate





**RANDALL  
PAULSON**  
architects

Roswell Mill  
85-A Mill Street, Suite 200  
Roswell, Georgia 30075  
1 770.850.7558 1 770.850.7559  
e-mail architects@randallpaulson.com

architecture/interiors

This plan and specification are the property of Randall Paulson Architects. Incorporated. These documents may not be copied, reproduced, used or implemented in any way, in part or in whole, without the written consent of Randall Paulson Architects, Incorporated. All content has the right of copyright as hereby specifically reserved.

**GILLEM  
LOGISTICS  
CENTER  
BUILDING 700**

at

**FORT GILLEM**

for

**ROBINSON | WEEKS**  
PARTNERS

CLAYTON COUNTY,  
FOREST PARK, GEORGIA 30294

Print Record

20 SEPT 2021	ISSUED FOR PERMIT

Revisions

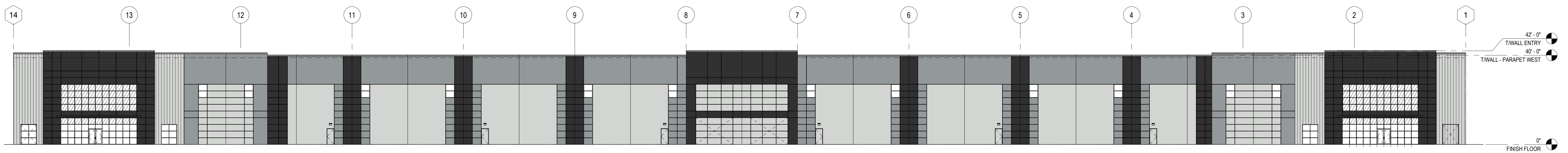

Date: 20 SEPTEMBER 2021  
Project No.: 2021240.00

Sheet Title: ELEVATIONS

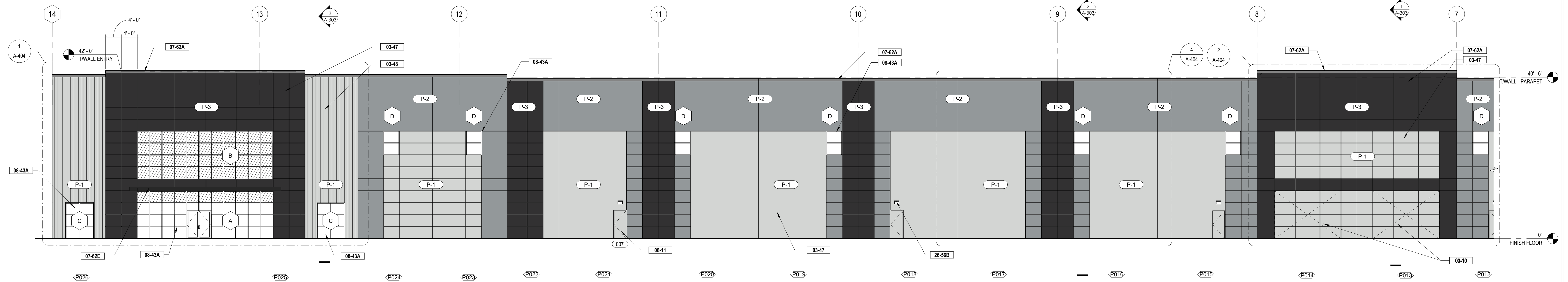
Sheet No.

**A-201**

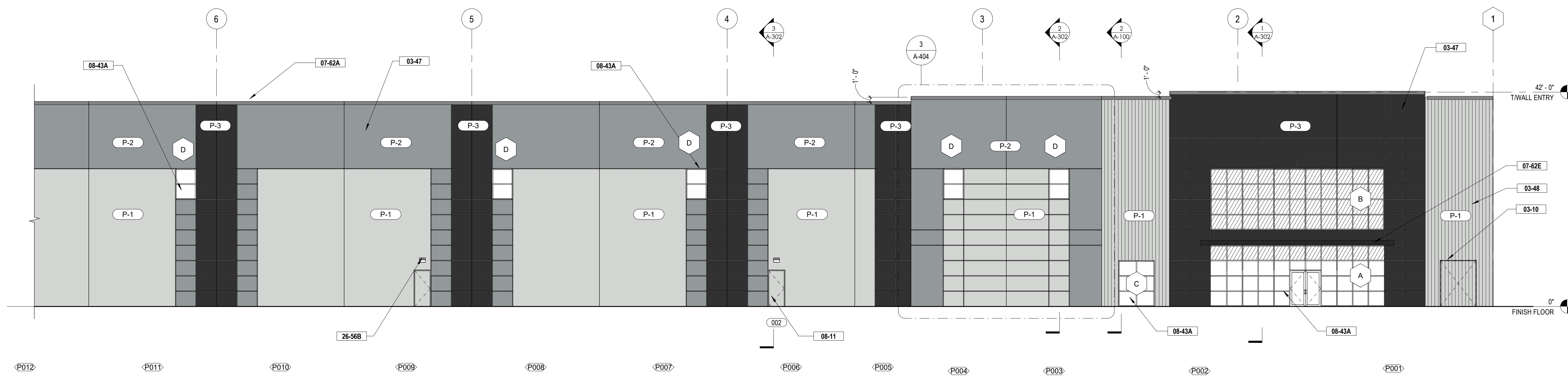
Released for Construction  
Not Released for Construction



**1 WEST ELEVATION**  
A-201 1" = 20'-0"



**2 WEST ELEVATION 'A'**  
A-201 3/32" = 1'-0"



**3 WEST ELEVATION 'B'**  
A-201 3/32" = 1'-0"

KEYNOTE LEGEND.	
KEY	TEXT
03-10	KNOCKOUT IN CONCRETE TILT PANEL FOR FUTURE OPENING
03-30	6" DUCTLORETE SLAB ON GRADE WITH 6" STONE AGGREGATE BASE. SEE MANUFACTURER'S DETAILS AND DRAWINGS
03-31B	CONCRETE SLAB ON GRADE SEE STRUCTURAL DRAWINGS WITH 10 MIL VAPOR RETARDER
03-31C	CONCRETE RAMP ON GRADE. SEE CIVIL & STRUCTURAL DRAWINGS
03-47	CONCRETE TILT PANEL, INSIDE FACE PAINTED WHITE. SEE STRUCTURAL DRAWINGS
03-48	CONCRETE TILT PANEL WITH FITZGERALD FORMLINER - 14309 FLUTED RIB - 0.75" DEEP, 3" ON CENTER
05-12A	STEEL COLUMNS, PAINTED SAFETY YELLOW FULL HEIGHT. PAINTED SAFETY RED WHERE FIRE EXTINGUISHERS ARE LOCATED. SEE STRUCTURAL DRAWINGS
05-12B	STEEL BRACING. SEE STRUCTURAL DRAWINGS
05-50A	6" O CONCRETE FILLED GALVANIZED STEEL PIPE BOLLARD, TO BE PAINTED SAFETY YELLOW
05-50B	STEEL Z-GUARD, TO BE PAINTED SAFETY YELLOW
05-50C	SHOP MANUFACTURED STEEL ROOF ACCESS LADDER. PAINTED [COLOR]
05-51	GALVANIZED OPEN METAL GRATE STAIR AND LANDING. SEE DETAILS
05-52A	1 1/2" O STEEL PIPE GUARDRAIL, GALVANIZED
05-52B	1 1/4" O STEEL PIPE GUARDRAIL, GALVANIZED
07-24	EIFS - EXTERIOR INSULATION AND FINISH SYSTEM
07-54	45 MIL WHITE TPO MECHANICALLY FASTENED OVER POLYISOCYANURATE (LITR 20.5 MIN.) OVER METAL DECK. SEE STRUCTURAL DRAWINGS
07-62A	PRE-FINISHED METAL COPING, PAC CLAD - CHARCOAL GRAY
07-62B	PRE-FINISHED METAL GUTTER, PAC CLAD - CHARCOAL GRAY
07-62C	PRE-FINISHED METAL DOWNSPOUT, PAC CLAD - CHARCOAL GRAY
07-62E	PRE-FINISHED FLAT METAL FASCIA AND SOFFIT PANEL
08-11	HOLLOW METAL DOOR & FRAME. SEE DOOR SCHEDULE
08-36	OVERHEAD SECTIONAL DOOR WITH 3" HEAVY DUTY TRACK. SEE DOOR SCHEDULE
08-36B	DRIVE-IN OVERHEAD SECTIONAL DOOR WITH 3" HEAVY DUTY TRACK. SEE DOOR SCHEDULE, MOTORIZED
08-43A	BLACK ALUMINUM STOREFRONT SYSTEM WITH 1" INSULATED, TEMPERED, TINTED GLASS. SEE DOOR SCHEDULE
10-73	3-11" DEEP BULLNOSE PREFINISHED METAL DOCK CANOPY, PAC-CLAD - CHARCOAL GRAY
23-37	PREFINISHED METAL WALL LOUVER. SEE MECHANICAL DRAWINGS
26-56A	LED SECURITY WALL PACK - MOUNTED AT 30" O' A.F.F. TO CENTERLINE OF WALL PACK, UNLESS NOTED OTHERWISE. SEE ELECTRICAL DRAWINGS
26-56B	LED PERSONNEL DOOR WALL PACK - MOUNTED AT 9'-0" A.F.F. TO CENTERLINE OF WALL PACK, UNLESS NOTED OTHERWISE. SEE ELECTRICAL DRAWINGS

REVEAL LEGEND		
TYPE	DESCRIPTION	GRAPHIC
'A'	1 1/2" X 3/4" V-GROOVE REVEAL	

NOTE:  
UNLESS NOTED OTHERWISE, ALL REVEAL DIMENSIONS ARE TAKEN TO THE CENTERLINE OF THE REVEAL.  
SEE ENLARGED ELEVATIONS VIEWS FOR REVEAL ELEVATION  
REVEALS TO BE CONTINUED AT EDGES OF PANEL

PAINT LEGEND				
TAG	KEY	COLOR	MANUF.	LOCATION
P-1		REFLECTION SW 7661	SW	FIELD
P-2		AFRICAN GRAY SW 9182	SW	ACCENT
P-3		BLACK MAGIC SW 6991	SW	ACCENT





**RANDALL  
PAULSON**  
architects

Roswell Mill  
85-A Mill Street, Suite 200  
Roswell, Georgia 30075  
1778.858.7558 1778.858.7559  
e-mail architects@randallpaulson.com

architecture/interiors  
These plans are specifications and the property of Randall Paulson Architects. Incorporated. These documents may not be copied, reproduced, used, or implemented in any way, in part or in whole, without the written consent of Randall Paulson Architects, Inc. Copyright. All content the right of copyright is hereby specifically reserved.

**GILLEM  
LOGISTICS  
CENTER  
BUILDING 700**

at

**FORT GILLEM**

for

**ROBINSON | WEEKS**  
PARTNERS

CLAYTON COUNTY,  
FOREST PARK, GEORGIA 30294

Print Record

20 SEPT 2021	ISSUED FOR PERMIT

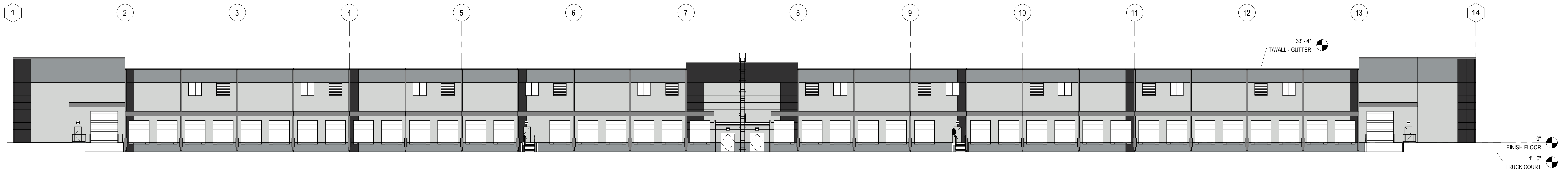
Revisions


Date 20 SEPTEMBER 2021 Project No. 2021240.00

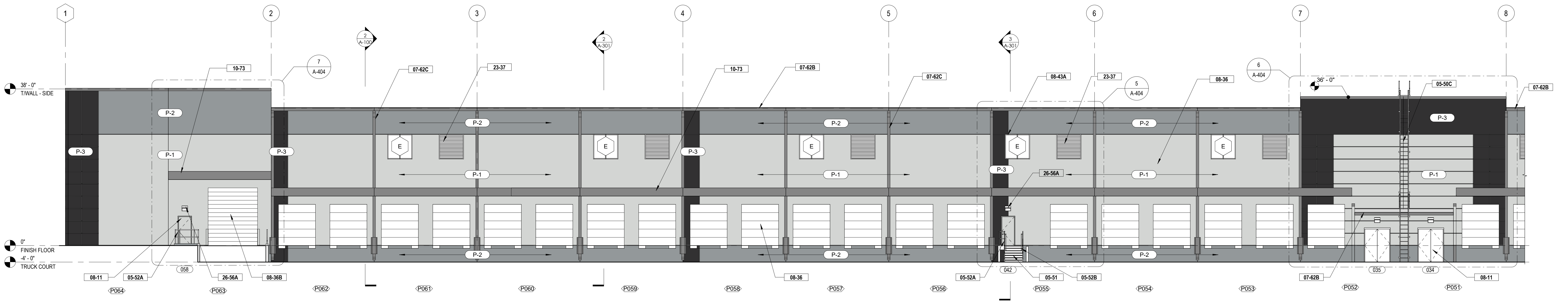
Sheet Title ELEVATIONS

Sheet No. **A-202**

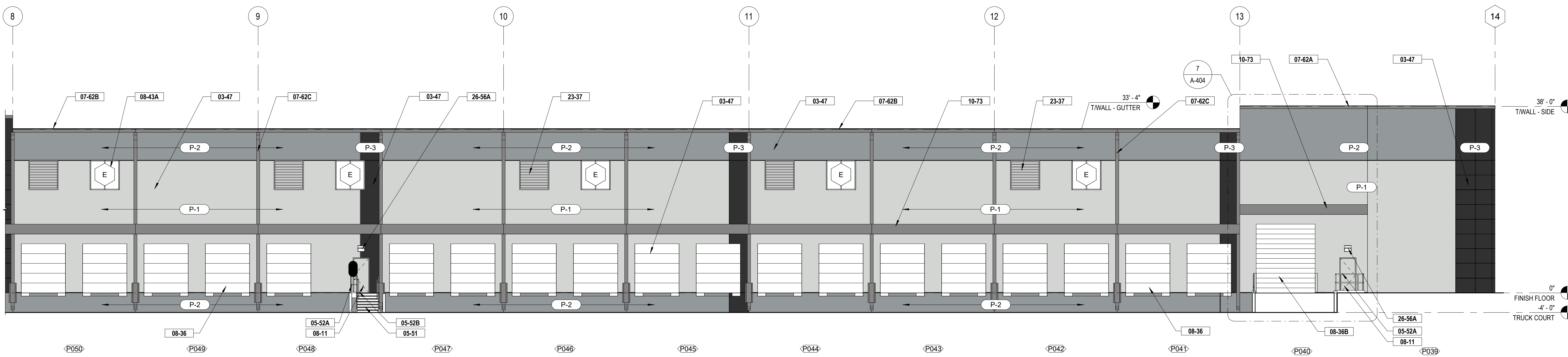
Released for Construction  
Not Released for Construction



**1 EAST ELEVATION**  
1" = 20'-0"



**2 EAST ELEVATION 'A'**  
3/32" = 1'-0"



**3 EAST ELEVATION 'B'**  
3/32" = 1'-0"

KEY	TEXT
03-10	KNOCKOUT IN CONCRETE TILT PANEL FOR FUTURE OPENING
03-30	6" DUCTLORETE SLAB ON GRADE WITH 6" STONE AGGREGATE BASE. SEE MANUFACTURER'S DETAILS AND DRAWINGS
03-31B	CONCRETE SLAB ON GRADE SEE STRUCTURAL DRAWINGS WITH 10 mil VAPOR RETARDER
03-31C	CONCRETE RAMP-ON-GRADE. SEE CIVIL & STRUCTURAL DRAWINGS
03-47	CONCRETE TILT PANEL, INSIDE FACE PAINTED WHITE. SEE STRUCTURAL DRAWINGS
03-48	CONCRETE TILT PANEL WITH FITZGERALD FORMLINER - 14309 FLUTED RIB - 0.75" DEEP, 3" ON CENTER
05-12A	STEEL COLUMNS, PAINTED SAFETY YELLOW FULL HEIGHT, PAINTED SAFETY RED WHERE FIRE EXTINGUISHERS ARE LOCATED. SEE STRUCTURAL DRAWINGS
05-12B	STEEL BRACING. SEE STRUCTURAL DRAWINGS
05-50A	6" Ø CONCRETE FILLED GALVANIZED STEEL PIPE BOLLARD, TO BE PAINTED SAFETY YELLOW
05-50B	STEEL Z-GUARD, TO BE PAINTED SAFETY YELLOW
05-50C	SHIP MANUFACTURED STEEL ROOF ACCESS LADDER, PAINTED [COLOR]
05-51	GALVANIZED OPEN METAL GRATE STAIR AND LANDING, SEE DETAILS
05-52A	1 1/2" Ø STEEL PIPE GUARDRAIL, GALVANIZED
05-52B	1 1/4" Ø STEEL PIPE HANDRAIL, GALVANIZED
07-24	EIPS - EXTERIOR INSULATION AND FINISH SYSTEM
07-54	45 mil WHITE TPO MECHANICALLY FASTENED OVER POLYISOCYANURATE (LITR-20.5 MIN.) OVER METAL DECK. SEE STRUCTURAL DRAWINGS
07-62A	PRE-FINISHED METAL COPING, PAC CLAD - CHARCOAL GRAY
07-62B	PRE-FINISHED METAL GUTTER, PAC CLAD - CHARCOAL GRAY
07-62C	PRE-FINISHED METAL DOWNSPOUT, PAC CLAD - CHARCOAL GRAY
07-62E	PRE-FINISHED FLAT METAL FASCIA AND SOFFIT PANEL
08-11	HOLLOW METAL DOOR & FRAME, SEE DOOR SCHEDULE
08-36	OVERHEAD SECTIONAL DOOR WITH 3" HEAVY DUTY TRACK, SEE DOOR SCHEDULE
08-36B	DRIVE-IN OVERHEAD SECTIONAL DOOR WITH 3" HEAVY DUTY TRACK, SEE DOOR SCHEDULE, MOTORIZED
08-43A	BLACK ALUMINUM STOREFRONT SYSTEM WITH 1" INSULATED, TEMPERED, TINTED GLASS, SEE DOOR SCHEDULE
10-73	3-11" DEEP BULLNOSE PREFINISHED METAL DOCK CANOPY, PAC-CLAD - CHARCOAL GRAY
23-37	PREFINISHED METAL WALL LOUVER, SEE MECHANICAL DRAWINGS
26-56A	LED SECURITY WALL PACK - MOUNTED AT 30" OF A.F.F. TO CENTERLINE OF WALL PACK, UNLESS NOTED OTHERWISE, SEE ELECTRICAL DRAWINGS
26-56B	LED PERSONNEL DOOR WALL PACK - MOUNTED AT 9'-0" A.F.F. TO CENTERLINE OF WALL PACK, UNLESS NOTED OTHERWISE, SEE ELECTRICAL DRAWINGS

TYPE	DESCRIPTION	GRAPHIC
A	1 1/2" X 3/4" V-GROOVE REVEAL	

NOTE: UNLESS NOTED OTHERWISE, ALL REVEAL DIMENSIONS ARE TAKEN TO THE CENTERLINE OF THE REVEAL.  
SEE ENLARGED ELEVATIONS VIEWS FOR REVEAL ELEVATION  
REVEALS TO BE CONTINUED AT EDGES OF PANEL

TAG	KEY	COLOR	MANUF.	LOCATION
P-1	REFLECTION SW	7661	SW	FIELD
P-2	AFRICAN GRAY	SW 9162	SW	ACCENT
P-3	BLACK MAGIC	SW 8991	SW	ACCENT



**RANDALL  
PAULSON**  
architects

Roswell Mill  
85-A Mill Street, Suite 200  
Roswell, Georgia 30075  
1 770.850.7558 1 770.850.7559  
e-mail architects@randallpaulson.com

architecture/interiors

These plans and specifications are the property of Randall Paulson Architects. Incorporated. These documents may not be copied, reproduced, used or implemented in any way, in part or in whole, without the written consent of Randall Paulson Architects, Incorporated. All content has right of copyright as hereby specifically reserved.

**GILLEM  
LOGISTICS  
CENTER  
BUILDING 700**

at

**FORT GILLEM**

for

**ROBINSON | WEEKS**  
PARTNERS

CLAYTON COUNTY,  
FOREST PARK, GEORGIA 30294

Print Record

20 SEPT 2021	ISSUED FOR PERMIT

Revisions

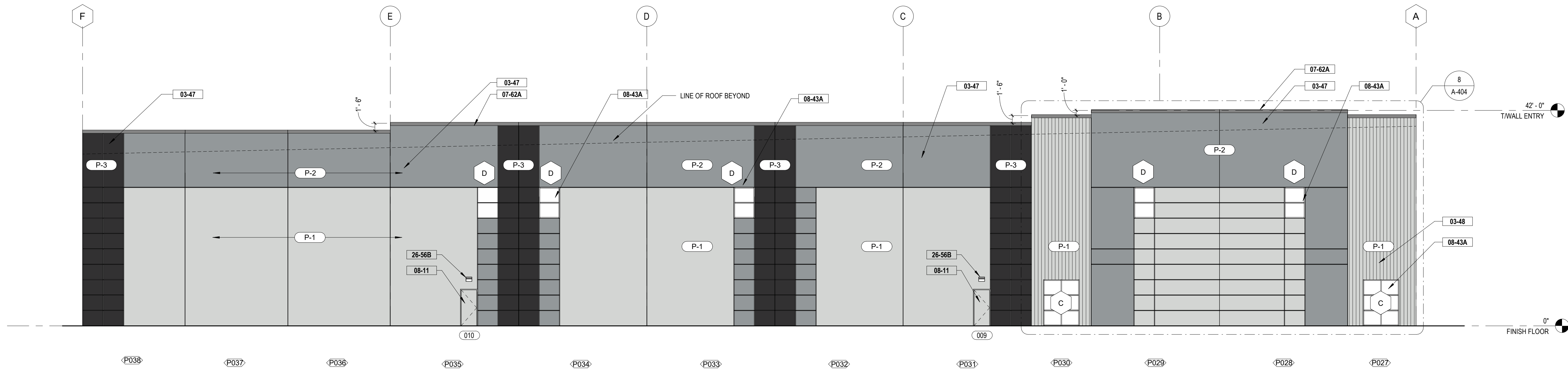

Date  
20 SEPTEMBER 2021

Project No.  
2021240.00

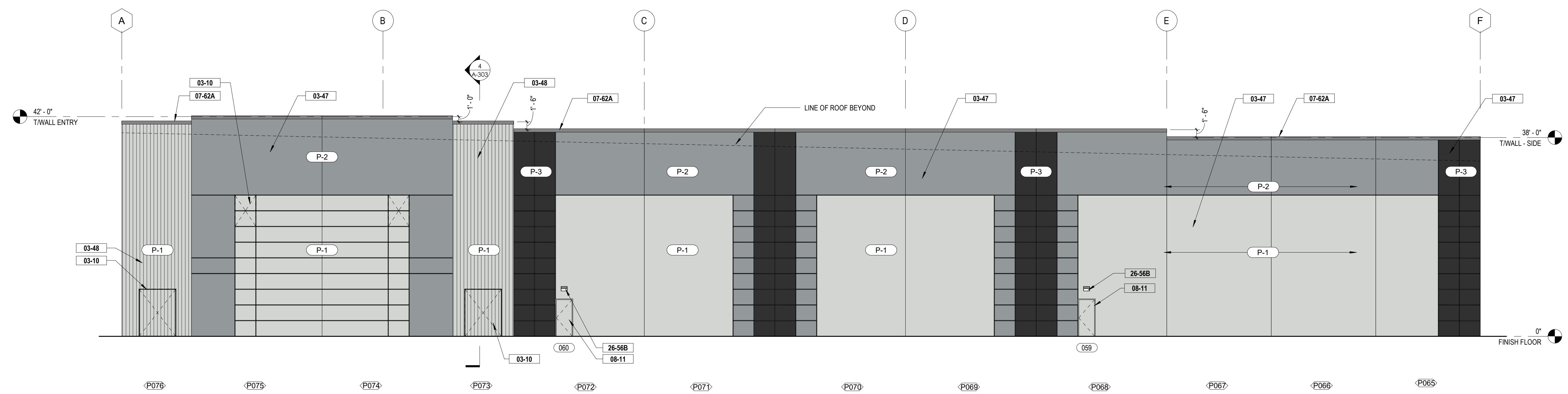
Sheet Title  
ELEVATIONS

Sheet No.  
**A-203**

Released for Construction  
Not Released for Construction



**1 NORTH ELEVATION**  
A-203 3/32" = 1'-0"



**2 SOUTH ELEVATION**  
A-203 3/32" = 1'-0"

**KEYNOTE LEGEND.**

KEY	TEXT
03-10	KNOCKOUT IN CONCRETE TILT PANEL FOR FUTURE OPENING
03-30	6" DUCTLORETE SLAB ON GRADE WITH 6" STONE AGGREGATE BASE. SEE MANUFACTURER'S DETAILS AND DRAWINGS
03-31B	CONCRETE SLAB-ON-GRADE SEE STRUCTURAL DRAWINGS WITH 10 ml VAPOR RETARDER
03-31C	CONCRETE RAMP-ON-GRADE. SEE CIVIL & STRUCTURAL DRAWINGS
03-47	CONCRETE TILT PANEL, INSIDE FACE PAINTED WHITE. SEE STRUCTURAL DRAWINGS
03-48	CONCRETE TILT PANEL WITH FITZGERALD FORMLINER - 14309 FLUTED RIB - 0.75" DEEP, 3" ON CENTER
05-12A	STEEL COLUMNS, PAINTED SAFETY YELLOW FULL HEIGHT, PAINTED SAFETY RED WHERE FIRE EXTINGUISHERS ARE LOCATED. SEE STRUCTURAL DRAWINGS
05-12B	STEEL BRACING. SEE STRUCTURAL DRAWINGS
05-50A	18" Ø CONCRETE FILLED GALVANIZED STEEL PIPE BOLLARD, TO BE PAINTED SAFETY YELLOW
05-50B	STEEL Z-GUARD, TO BE PAINTED SAFETY YELLOW
05-50C	SHOP MANUFACTURED STEEL ROOF ACCESS LADDER, PAINTED (COLOR)
05-51	GALVANIZED OPEN METAL GRATE STAIR AND LANDING. SEE DETAILS
05-52A	1 1/2" Ø STEEL PIPE GUARDRAIL, GALVANIZED
05-52B	1 1/4" Ø STEEL PIPE HANDRAIL, GALVANIZED
07-24	EIFS - EXTERIOR INSULATION AND FINISH SYSTEM
07-54	45 ml WHITE TPO MECHANICALLY FASTENED OVER POLYISOCYANURATE (LITR-20.5 MIN) OVER METAL DECK. SEE STRUCTURAL DRAWINGS
07-62A	PRE-FINISHED METAL COPING, PAC CLAD - CHARCOAL GRAY
07-62B	PRE-FINISHED METAL GUTTER, PAC CLAD - CHARCOAL GRAY
07-62C	PRE-FINISHED METAL DOWNSPOUT, PAC CLAD - CHARCOAL GRAY
07-62E	PRE-FINISHED FLAT METAL FASCIA AND SOFFIT PANEL
08-11	HOLLOW METAL DOOR & FRAME. SEE DOOR SCHEDULE
08-36	OVERHEAD SECTIONAL DOOR WITH 3" HEAVY DUTY TRACK. SEE DOOR SCHEDULE
08-36B	DRIVE-IN OVERHEAD SECTIONAL DOOR WITH 3" HEAVY DUTY TRACK. SEE DOOR SCHEDULE, MOTORIZED
08-43A	BLACK ALUMINUM STOREFRONT SYSTEM WITH 1" INSULATED, TEMPERED, TINTED GLASS. SEE DOOR SCHEDULE
10-73	3-11" DEEP BULLNOSE PREFINISHED METAL DOCK CANOPY, PAC-CLAD - CHARCOAL GRAY
23-37	PREFINISHED METAL WALL LOUVER, SEE MECHANICAL DRAWINGS
26-56A	LED SECURITY WALL PACK - MOUNTED AT 30" Ø A.F.F. TO CENTERLINE OF WALL PACK, UNLESS NOTED OTHERWISE. SEE ELECTRICAL DRAWINGS
26-56B	LED PERSONNEL DOOR WALL PACK - MOUNTED AT 8" Ø A.F.F. TO CENTERLINE OF WALL PACK, UNLESS NOTED OTHERWISE. SEE ELECTRICAL DRAWINGS

**REVEAL LEGEND**

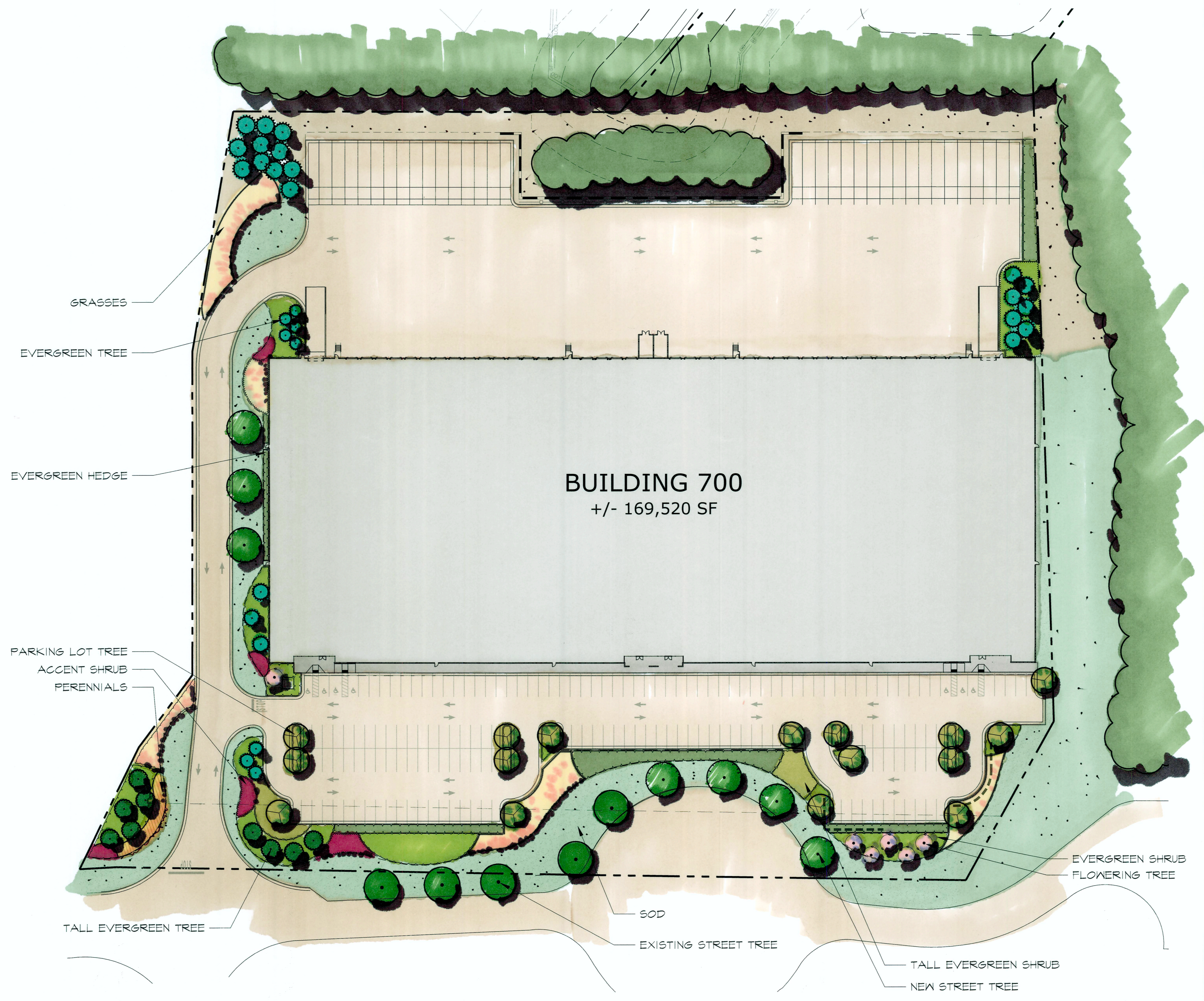
TYPE	DESCRIPTION	GRAPHIC
'A'	1 1/2" X 3/4" V-GROOVE REVEAL	

**NOTE:**  
UNLESS NOTED OTHERWISE, ALL REVEAL DIMENSIONS ARE TAKEN TO THE CENTERLINE OF THE REVEAL.  
SEE ENLARGED ELEVATIONS VIEWS FOR REVEAL ELEVATION  
REVEALS TO BE CONTINUED AT EDGES OF PANEL

**PAINT LEGEND**

TAG	KEY	COLOR	MANUF.	LOCATION
P-1	REFLECTION SW 7661	SW	SW	FIELD
P-2	AFRICAN GRAY SW 9162	SW	SW	ACCENT
P-3	BLACK MAGIC SW 6991	SW	SW	ACCENT



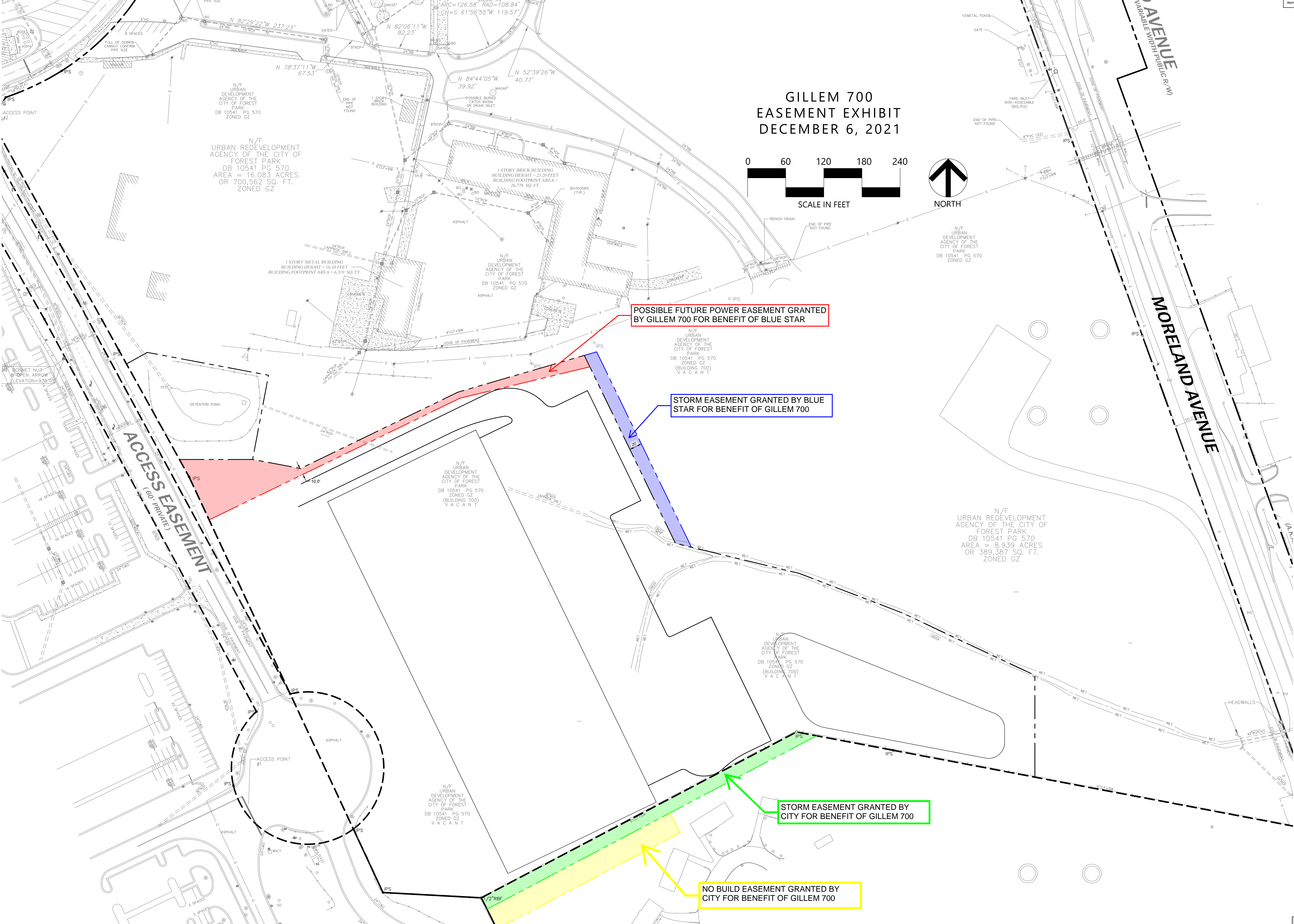
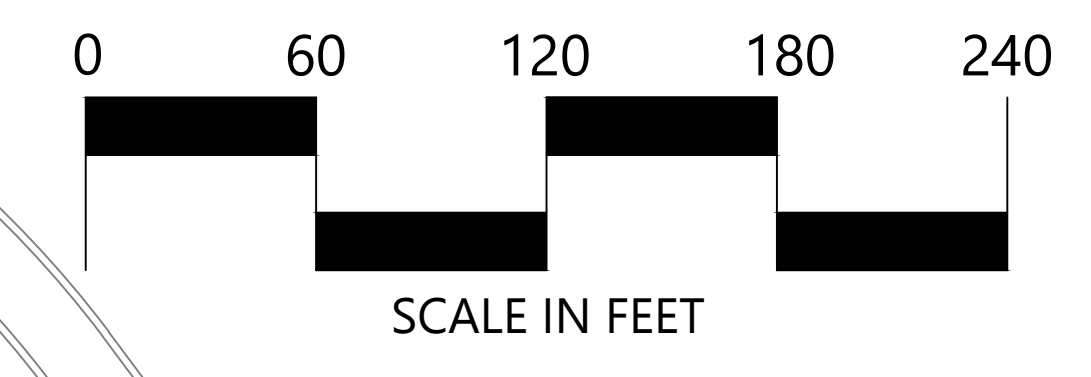


**TREE LEGEND**

- EXISTING STREET TREE
- PROPOSED STREET TREE
- PARKING LOT TREE
- TALL EVERGREEN TREE
- EVERGREEN TREE
- FLOWERING TREE
- EVERGREEN HEDGE  
- NEEDLEPOINT HOLLY
- GRASSES  
- SQUAW SWITCH GRASS  
- DWARF MUHLY GRASS
- ACCENT SHRUB  
- LIMELIGHT HYDRANGEA  
- KNOCKOUT ROSE
- TALL EVERGREEN SHRUB  
- RUBY LOROPETALUM
- EVERGREEN SHRUB  
- CARISSA HOLLY  
- DWARF YAUPON HOLLY  
- PURPLE DIAMOND LOROPETALUM
- PERENNIAL  
- STELLA D ORO DAYLILY
- SOD



# GILLEM 700 EASEMENT EXHIBIT DECEMBER 6, 2021



N/F URBAN REDEVELOPMENT AGENCY OF THE CITY OF FOREST PARK  
DB 10541 PG 570  
AREA = 16.083 ACRES  
OR 700,562 SQ. FT.  
ZONED GZ

POSSIBLE FUTURE POWER EASEMENT GRANTED BY GILLEM 700 FOR BENEFIT OF BLUE STAR

STORM EASEMENT GRANTED BY BLUE STAR FOR BENEFIT OF GILLEM 700

STORM EASEMENT GRANTED BY CITY FOR BENEFIT OF GILLEM 700

NO BUILD EASEMENT GRANTED BY CITY FOR BENEFIT OF GILLEM 700

ACCESS EASEMENT  
(60' PRIVATE)

MORELAND AVENUE

D AVENUE  
2' VARIABLE WIDTH PUBLIC R/W

N/F URBAN REDEVELOPMENT AGENCY OF THE CITY OF FOREST PARK  
DB 10541 PG 570  
ZONED GZ

N/F URBAN REDEVELOPMENT AGENCY OF THE CITY OF FOREST PARK  
DB 10541 PG 570  
AREA = 8.939 ACRES  
OR 389,387 SQ. FT.  
ZONED GZ

N/F URBAN REDEVELOPMENT AGENCY OF THE CITY OF FOREST PARK  
DB 10541 PG 570  
ZONED GZ  
VACANT

N/F URBAN REDEVELOPMENT AGENCY OF THE CITY OF FOREST PARK  
DB 10541 PG 570  
ZONED GZ  
VACANT