



Solid Waste Management Facility Siting

DESCHUTES COUNTY SOLID WASTE ADVISORY COMMITTEE (SWAC) MEETING

Tuesday, October 17, 2023, 9:00 a.m.-11:00 a.m.

Deschutes County Road Department Conference Room (61150 SE 27th St., Bend, OR 97702) **or** Zoom

Zoom Meeting Information: This meeting may be accessed via Zoom using a phone or computer.

- To join the meeting from a computer, copy and paste this link: bit.ly/40aKaGc
- To join by phone, call 253-215-8782 and enter webinar ID #893 0788 6009 followed by the passcode 773333.
- If joining by a browser, use the raise hand icon to indicate you would like to provide public comment, if and when allowed. If using a phone, press *6 to indicate you would like to speak and *9 to unmute yourself when you are called on.

October Meeting Agenda

1. Welcome
2. Review/ Approve August Meeting Minutes
3. Open House Input and Community Outreach Updates
4. Brief Final Site Evaluation Progress Update
5. Public Comment
6. SWAC Discussion
7. Adjourn

[Managing the Future of Solid Waste](#): Solid Waste Management Facility resource information

[Story Map](#): Deschutes County Managing the Future of Solid Waste informational story map including Frequently Asked Questions

[Solid Waste Advisory Committee Meetings](#): April 2022 to June 2023 meeting materials, including agendas and summaries

[Deschutes County Meeting Portal - Solid Waste Advisory Committee Meetings](#): August 2023 and later meeting agendas and summaries



Deschutes County encourages persons with disabilities to participate in all programs and activities. This location is accessible to people with disabilities. If you need accommodation to make participation possible, please call the Solid Waste office at (541) 317-3163, or send an email to solidwaste@deschutes.org.



Condado de Deschutes alienta a las personas con discapacidad a participar en sus programas y actividades. Este lugar es accesible para personas con discapacidad. Si necesita hacer arreglos para hacer posible la participación, llame a Solid Waste la oficina a (541) 317-3163, o envíe un correo electrónico a solidwaste@deschutes.org.



Solid Waste Management Facility Siting Study

Solid Waste Advisory Committee (SWAC) Meeting

October 17, 2023





Agenda

1. Welcome
2. Review/ Approve August Meeting Minutes
3. Open House Input and Community Outreach Updates
4. Final Site Evaluation: Progress Updates
5. Public Comment
6. SWAC Discussion
7. Adjourn



Open House Input & Community Outreach Updates



Recent outreach highlights

- Sept 11 Open House
- Sept 12 County College update
- Sept 27 City of Sisters update
- Sept 28 Oregon Natural Desert Association meeting
- Oct 10 Bureau of Land Management meeting





September open house for community members to learn more and discuss the siting process

September 11 5:30-7pm

- Open Forum
- Brief Presentation
- Questions and Answers

Promotion

- County website
- SWAC meetings and group email
- Sept 5 news release (Central Oregon Daily, KBND, Bend Bulletin, Source, etc)

Attendance 36 in-person and 11 virtual

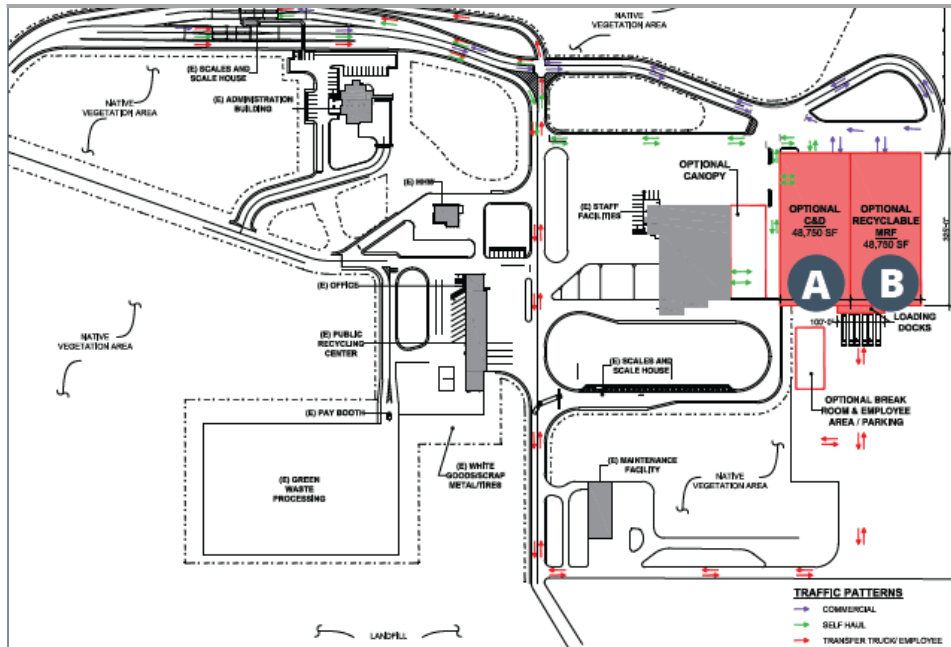


deschutes.org/bc-swac/page/solid-waste-open-house



Open house highlighted other efforts to reach diversion goals and expand recycling

Knott Landfill Recycling Improvements



- A** Construction and demolition (C&D) recycling equipment
- B** Material recovery facility (MRF) recycling equipment

Negus Transfer Station Composting Improvements





Open house included two Knott Landfill potential post-closure concepts





Community members were interested in siting process, facility lifespan, recycling and more

Open House Questions:

How long will the facility last?

Where will recycling happen?

How will the transfer stations be used?

What happens if the facility can't be permitted?

What's the timeline for the BLM sites?

Could Knott be expanded instead?

Are you working with other counties?

How much will the facility cost and who will pay?

How much does the County invest in diversion?

Are there cost savings from reaching the 45% diversion goal?





Ongoing outreach through siting process

- City of Bend, Redmond, La Pine briefings in fall 2023
- Direct outreach to interested parties
- Select community group briefings
- Scheduled SWAC meetings Jan, Apr, and May 2024
- E-news and group email updates
- Website and StoryMap updates



Deschutes County: Managing the Future of Solid Waste

Informational Story Map

Deschutes County Department of Solid Waste | September 2023

For more information: deschutes.org/managethefuture



Final Site Evaluations: Progress Update

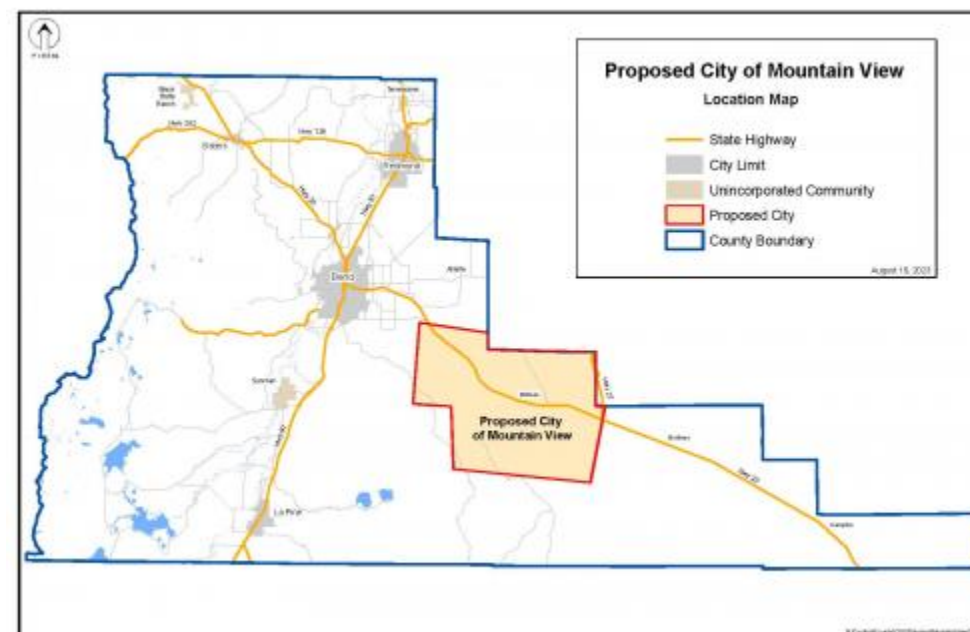


Staff recommends removal of BLM site from consideration

Highway 20 BLM site considerations:

- Wilderness area characteristics
- Active grazing lease
- Prevalent rock (costly to develop and operate)
- Ancient junipers
- Extended timeline for potential acquisition and permitting
- Not currently included in final site evaluations

On Sept. 27, the Board of County Commissioners passed a motion denying the petition for incorporation of proposed City of Mountain View

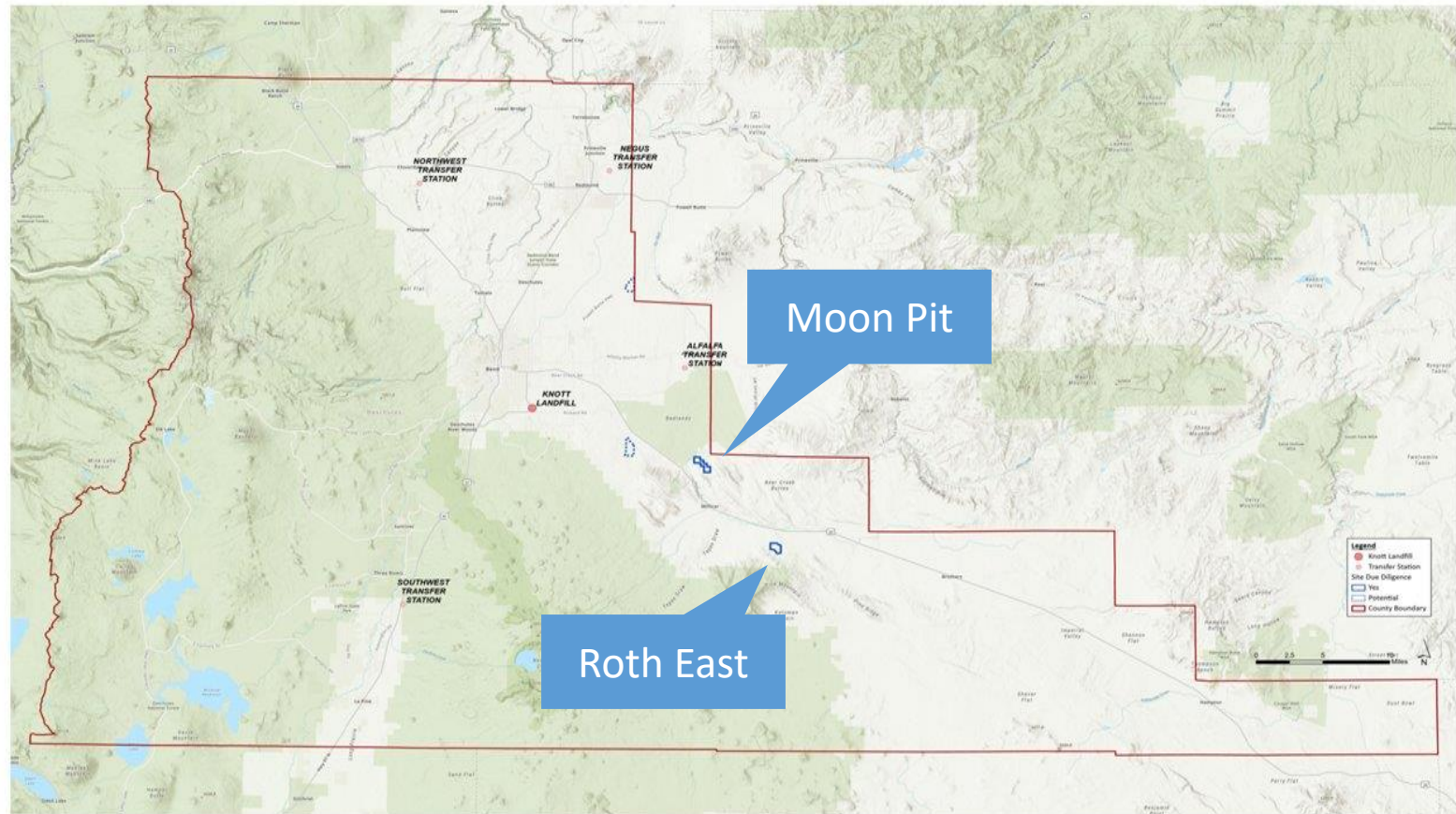




Finalist Site Evaluation Progress

Ongoing technical analysis:

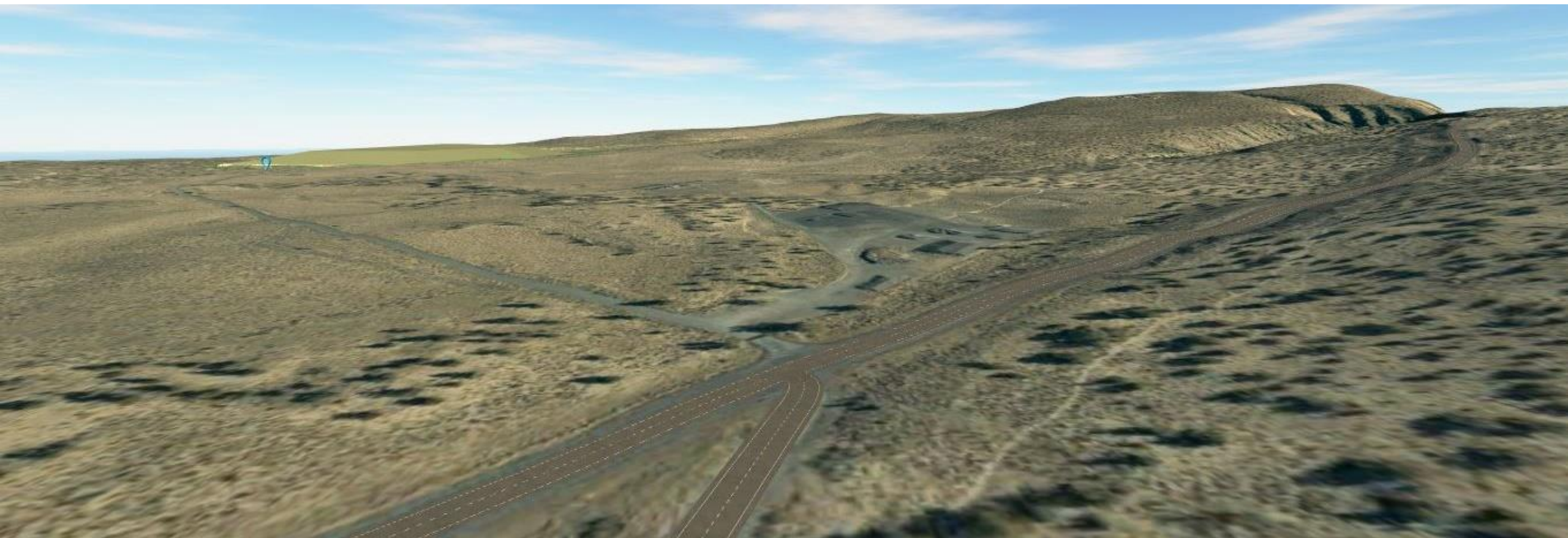
- Geophysical survey
- Geotechnical investigation
- Cultural resources field work
- Natural resources field work
- Transportation onsite Assessment
- Water Infrastructure Assessment
- Environmental Assessments
- Preliminary Site Design & Layout





Moon Pit

Conceptual Design Renderings

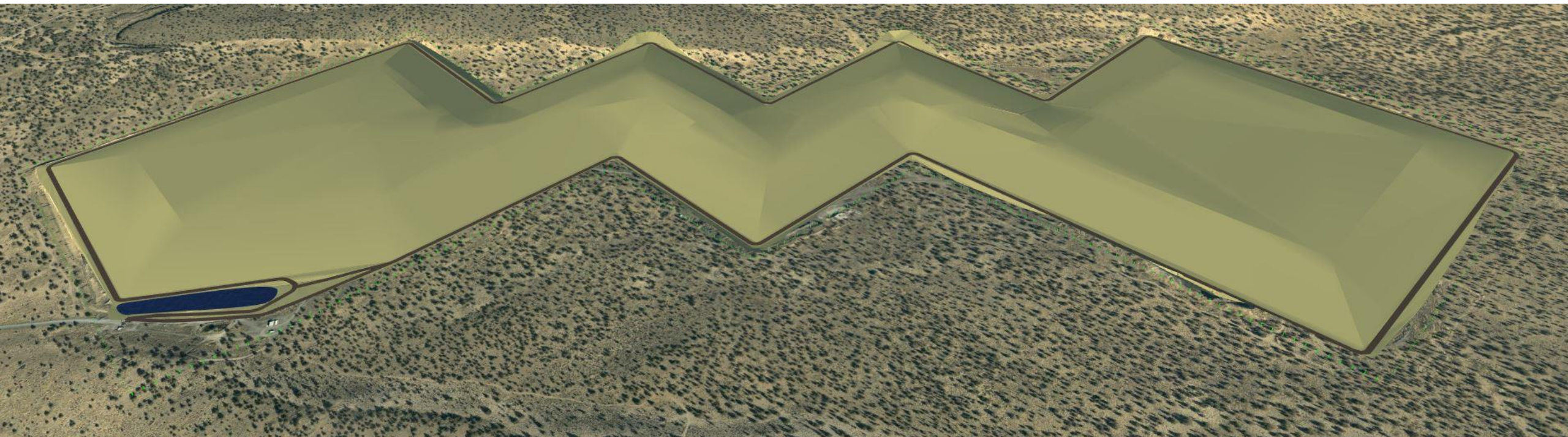


Elevated view from Horse Ridge Frontage Rd & Highway 20



Moon Pit

Conceptual Design Renderings

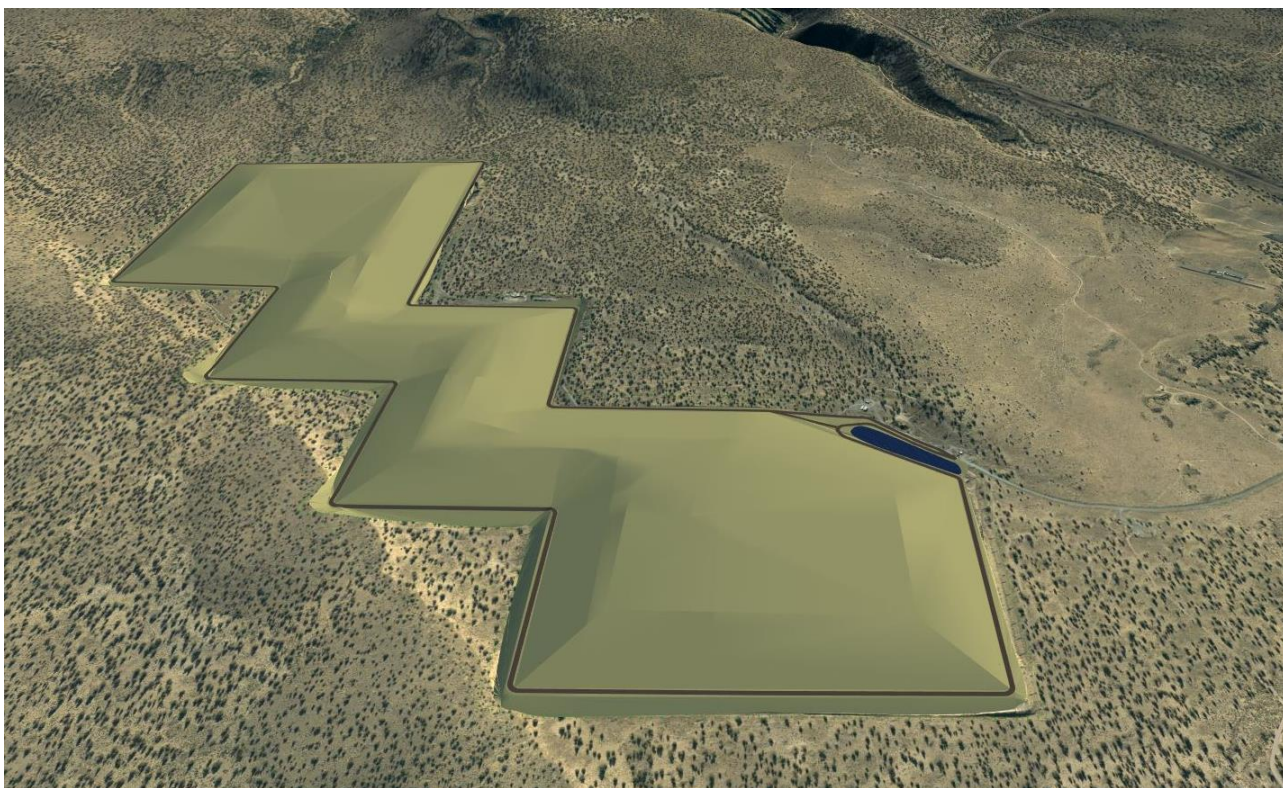


Isometric View from Southwest - Final Closure

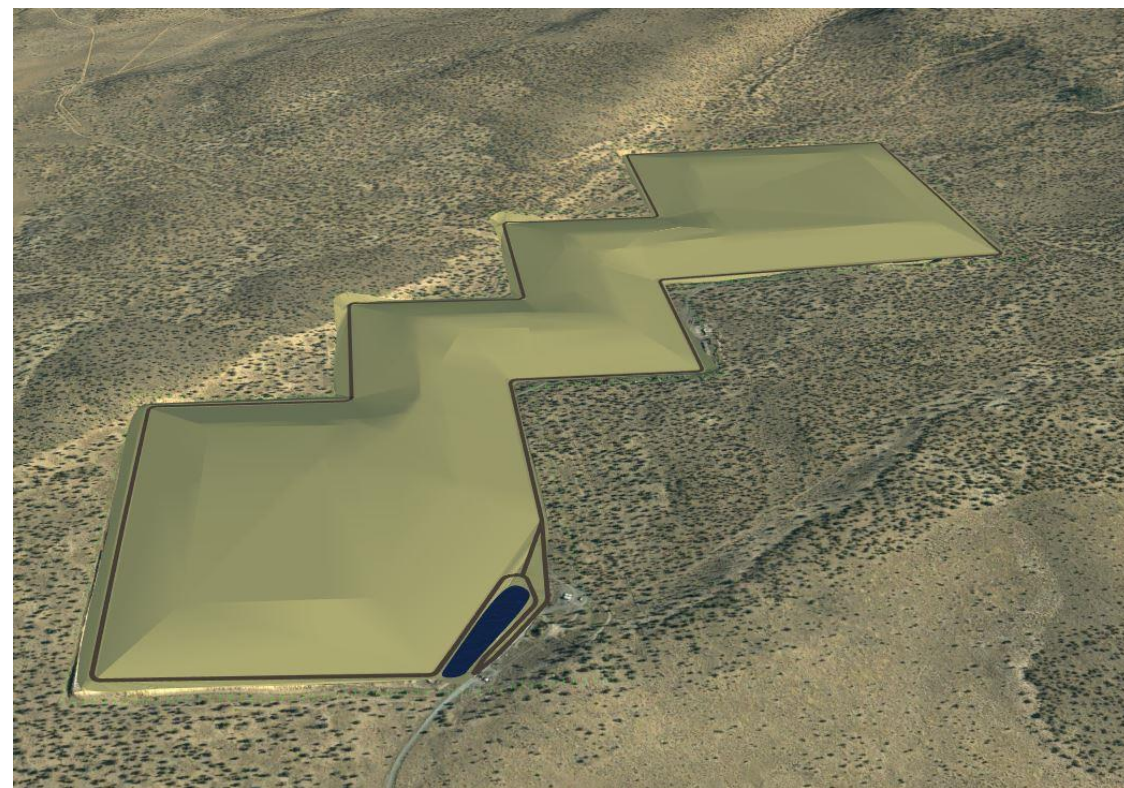


Moon Pit

Conceptual Design Renderings



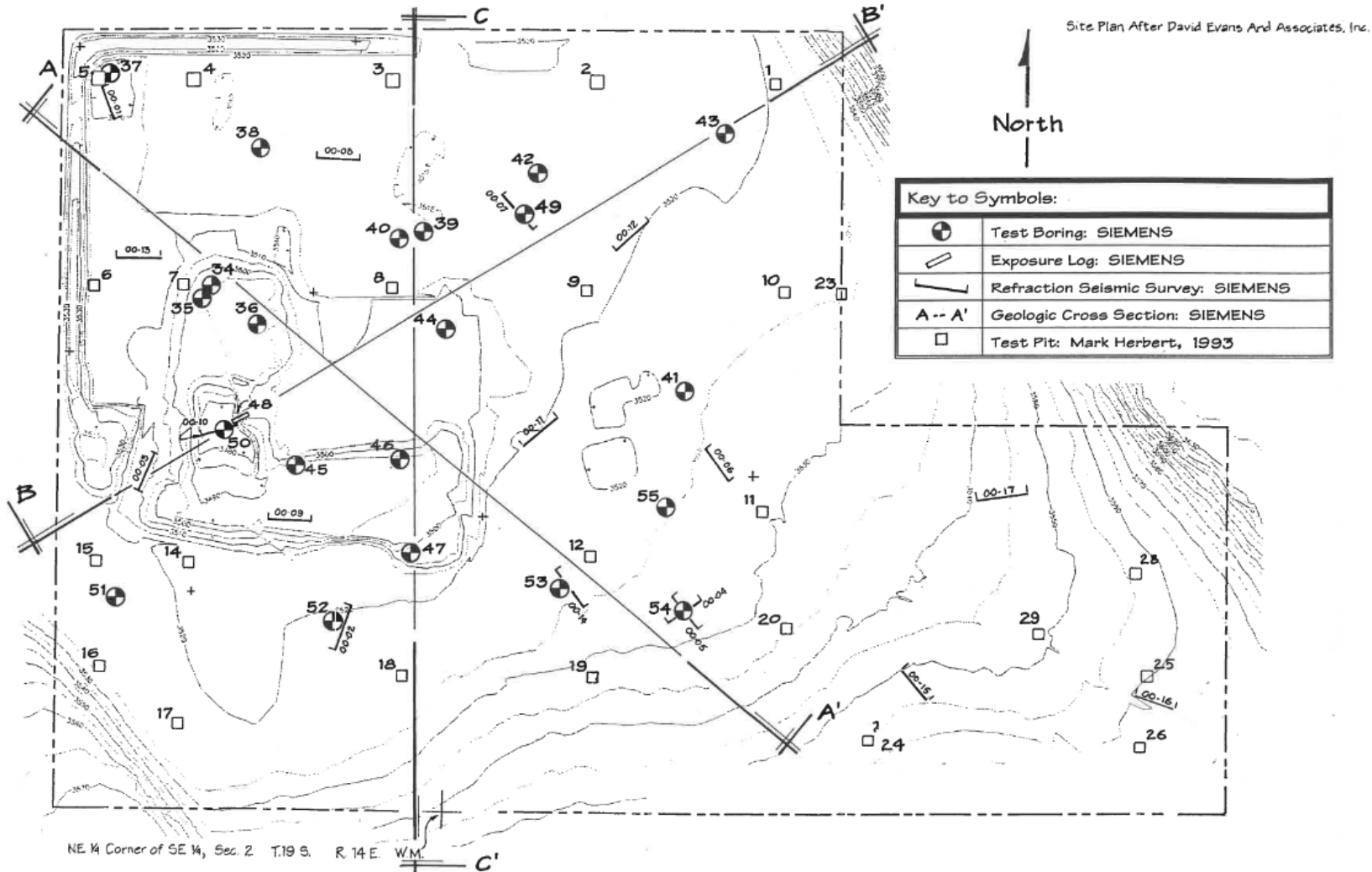
Isometric View from North - Final Closure



Isometric View from West - Final Closure

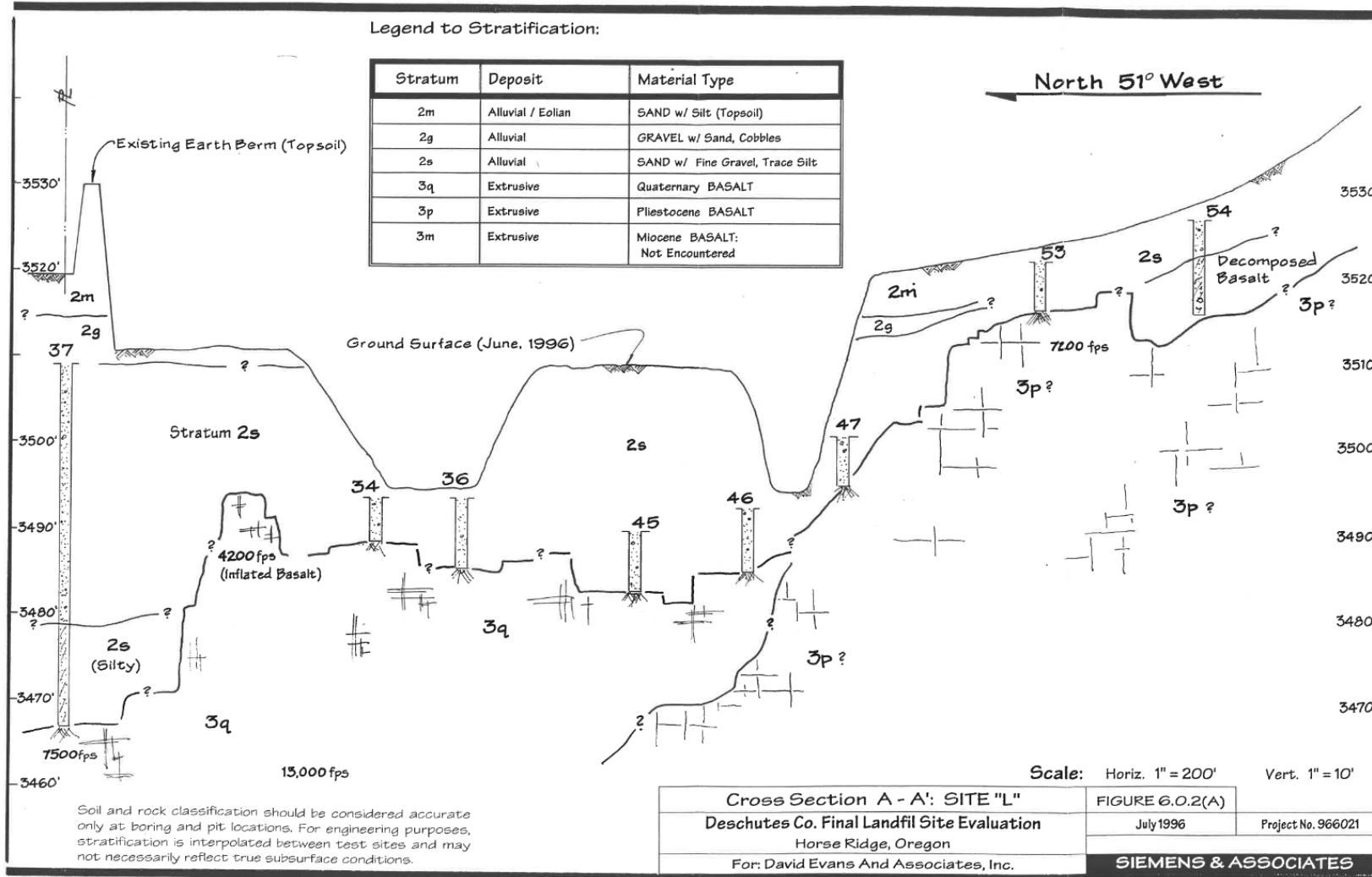


Moon Pit Geotechnical Observations



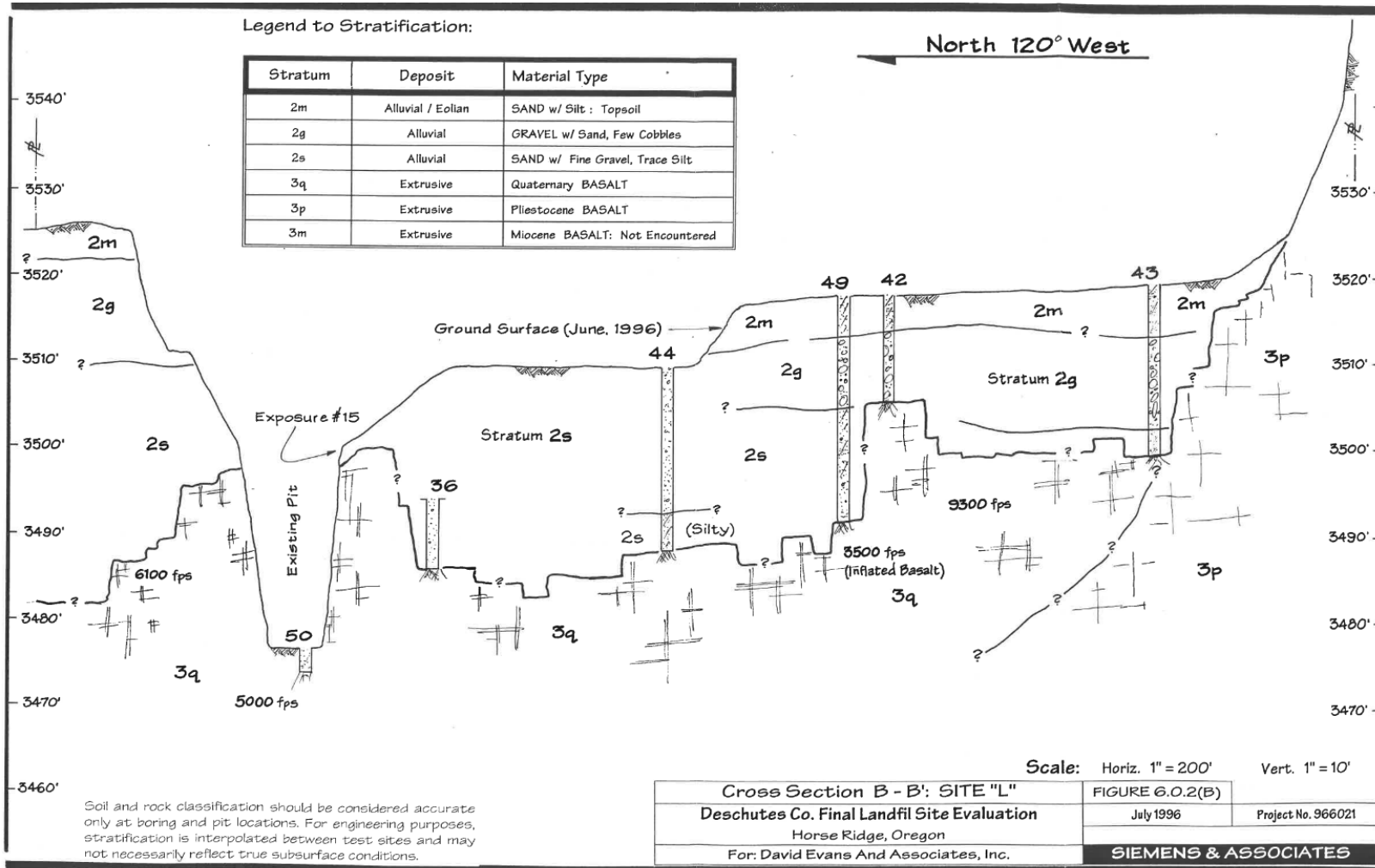


Moon Pit Geotechnical Observations



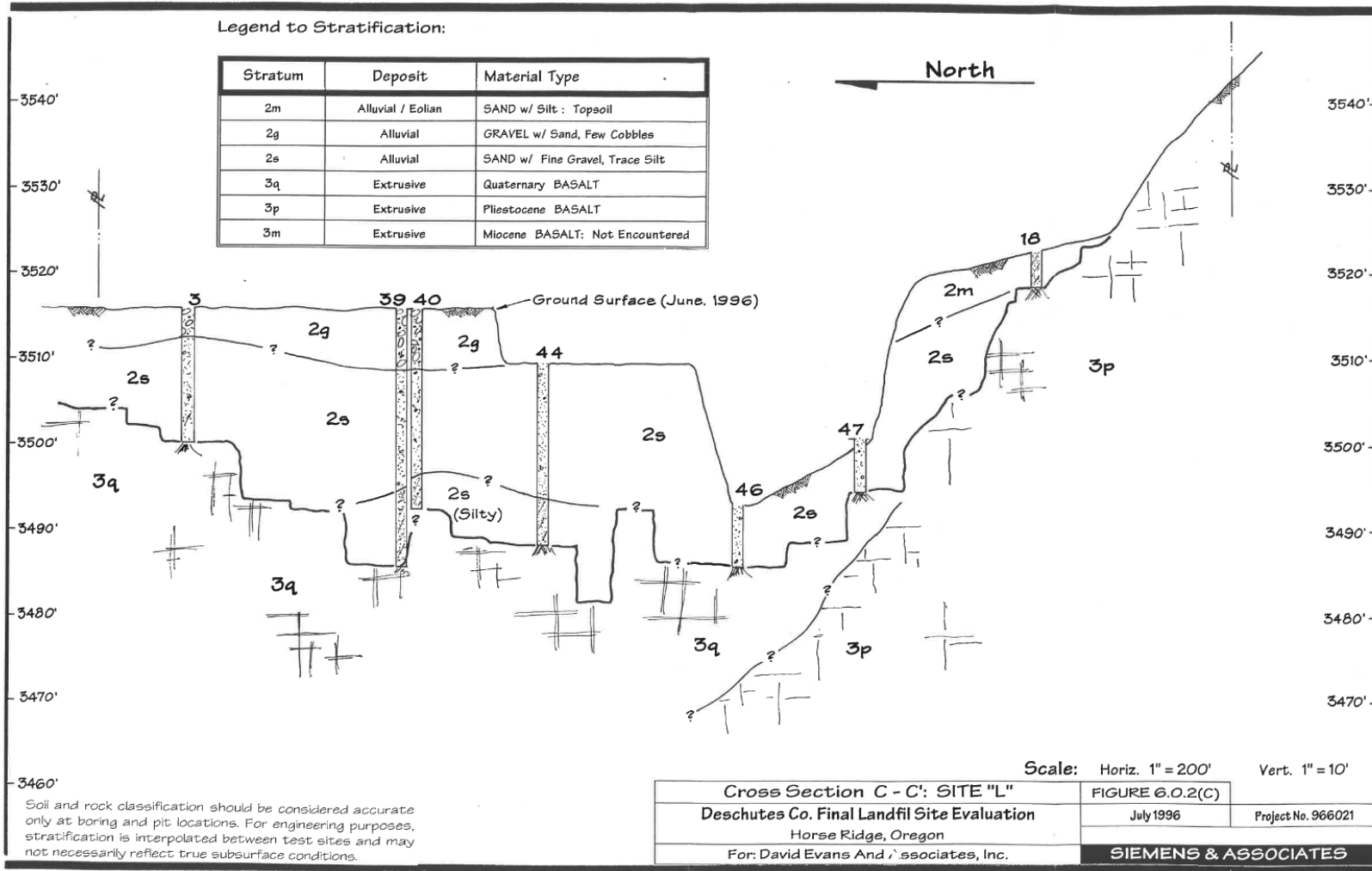


Moon Pit Geotechnical Observations





Moon Pit Geotechnical Observations





Moon Pit

Geotechnical Observations



Upper Mining Area (Landfill Phase 3) lacks geophysical survey, but exposed faces indicate rock prevalence.



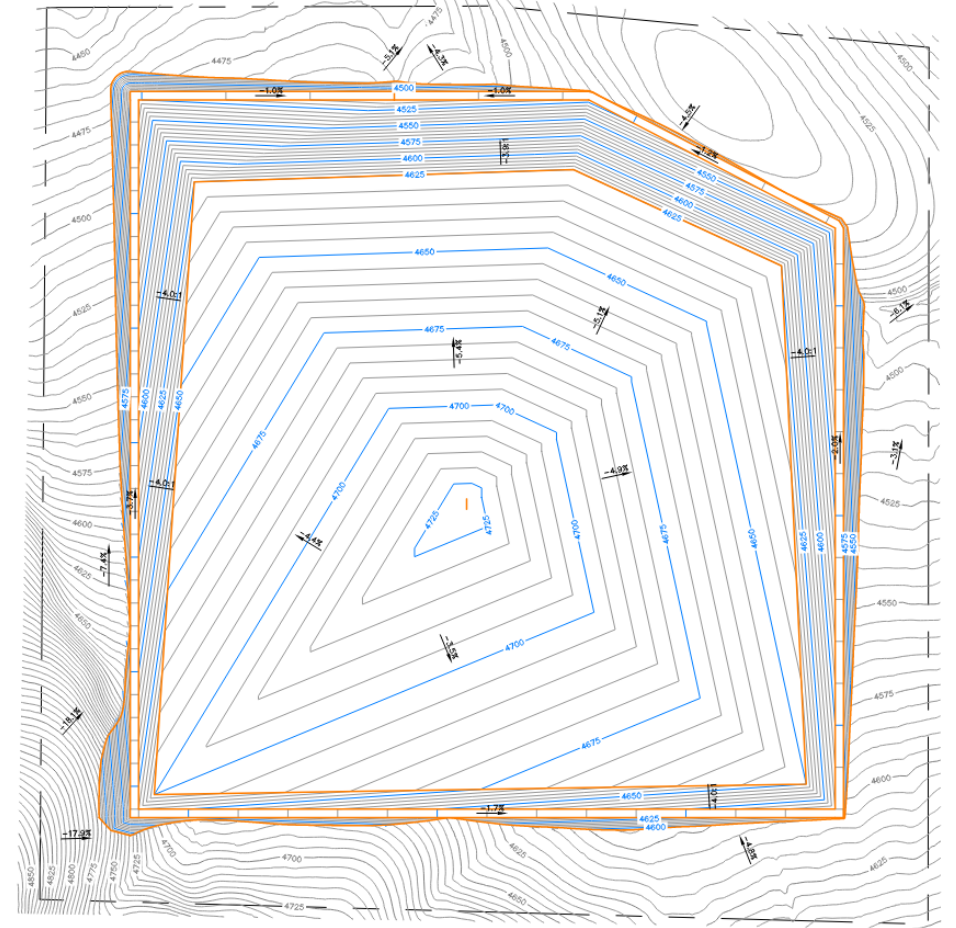
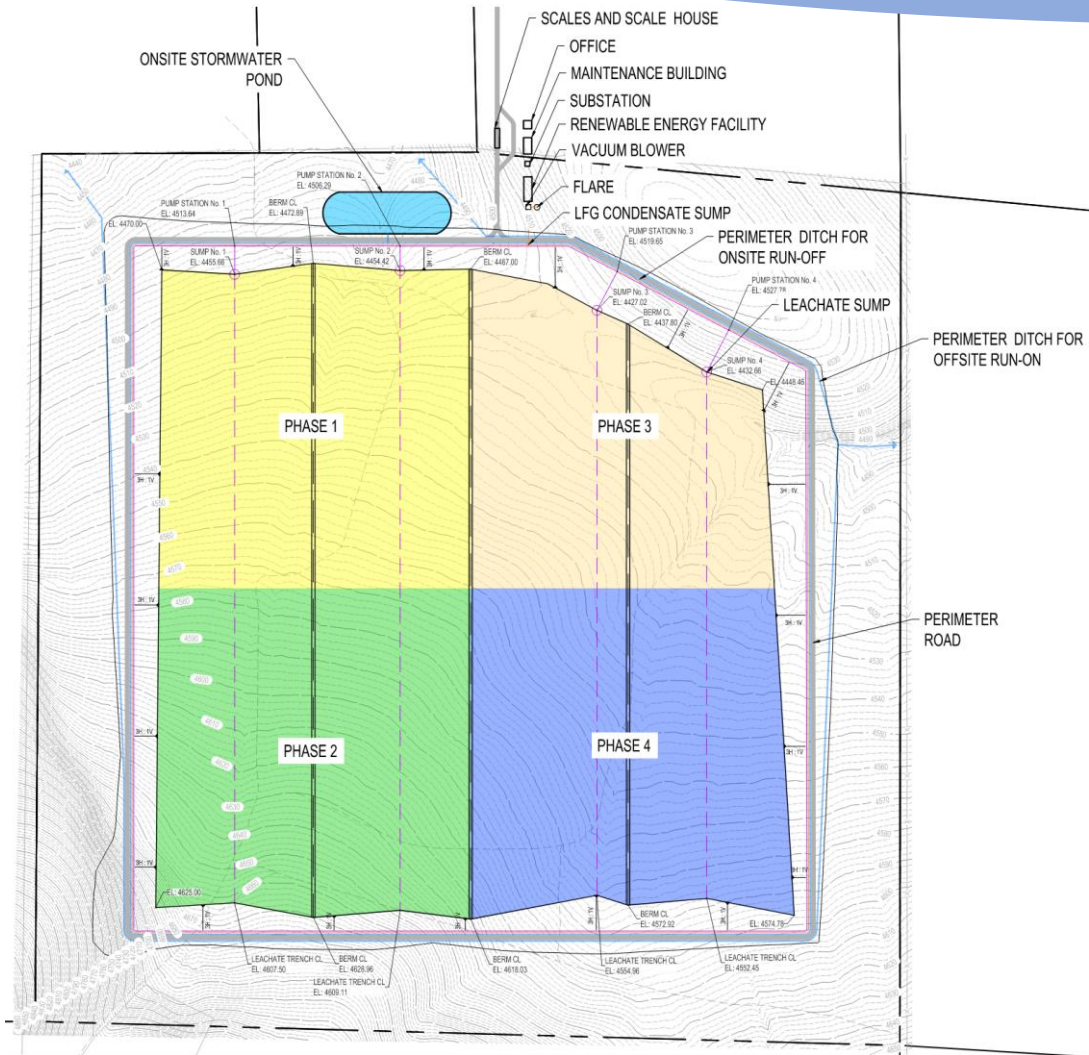
Moon Pit

Geotechnical Observations

- Based on geophysical and geotechnical explorations of Moon Pit site in 1996, the lower portion of site (Landfill Phase 1) is generally characterized by 10'-30' deep deposits of gravel, sand, and silt over basalt bedrock.
- Present-day ground surface likely differs from cross sections due to mining operations and will be updated in new report per recent drone survey.
- Shallow bedrock observed in upper portions of site (Landfill Phases 2 & 3).
- Rock blasting and crushing will be required for development of this site and reuse of materials for SWMF needs.
- The County and project team is coordinating with Hooker Creek on the potential for shared use of the site and synergy between landfill and aggregate mining operations.

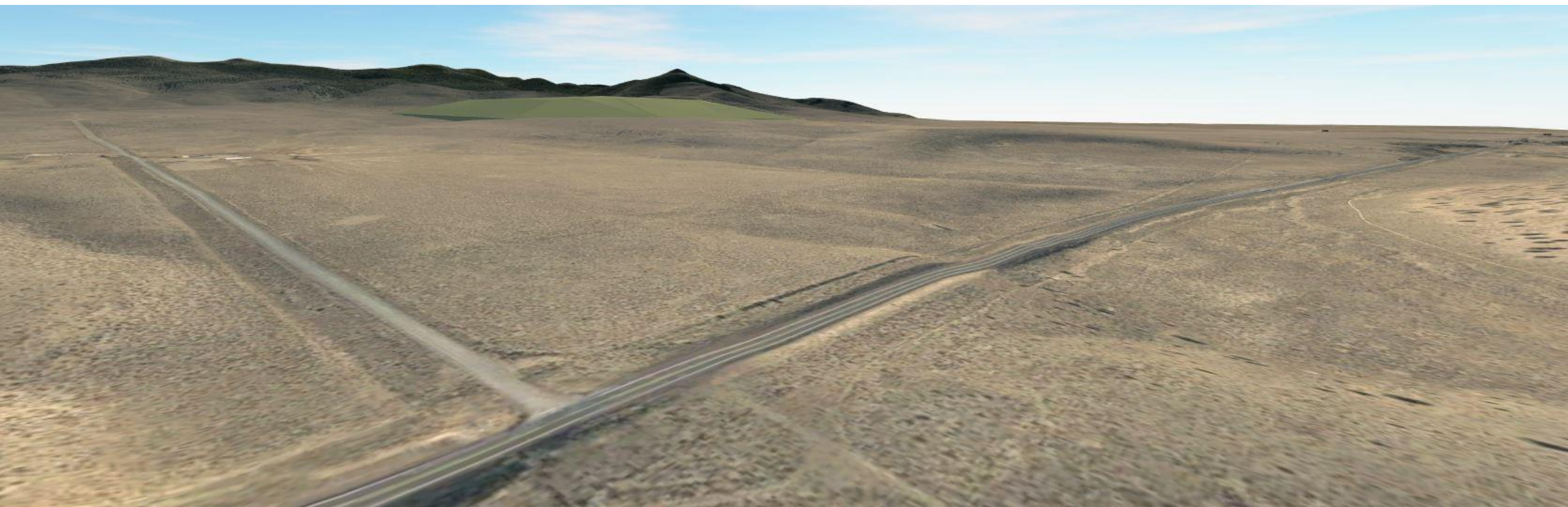


Roth East Conceptual Site Design





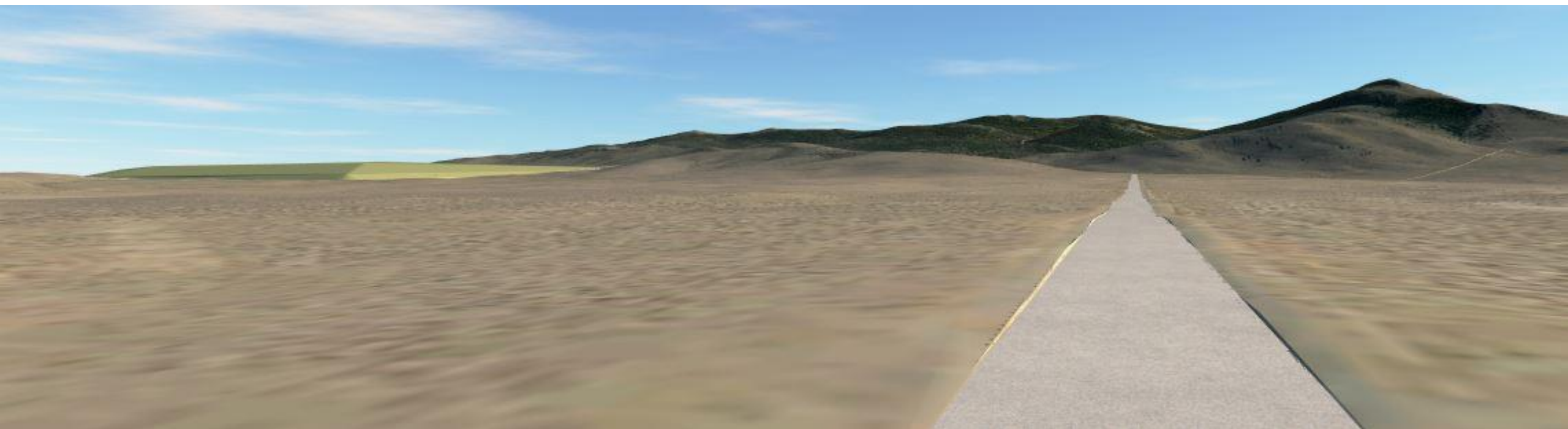
Roth East Conceptual Design Renderings



NE Isometric View from above Highway 20 & Newt Morris Rd



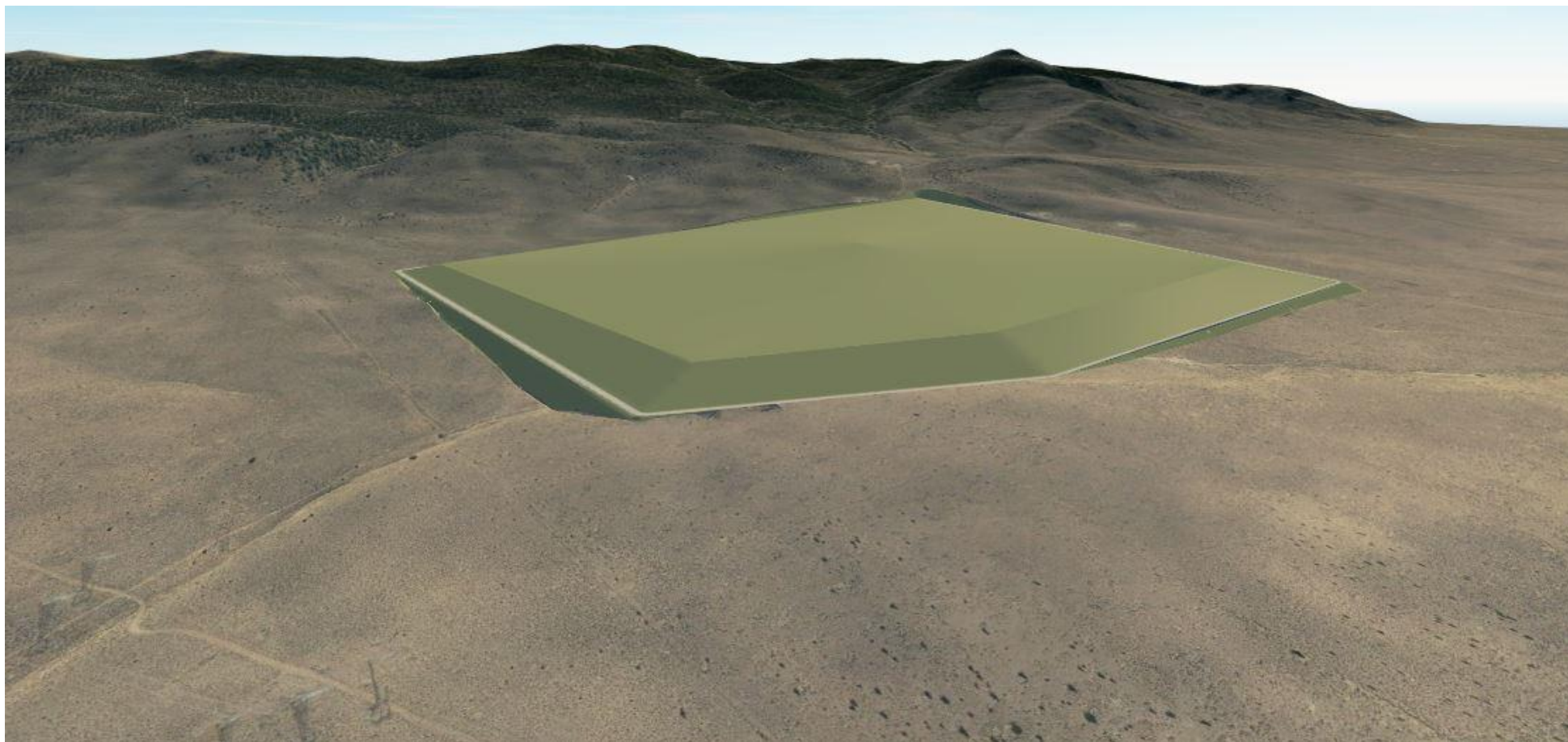
Roth East Conceptual Design Renderings



Ground Level view from Pine Mountain Road



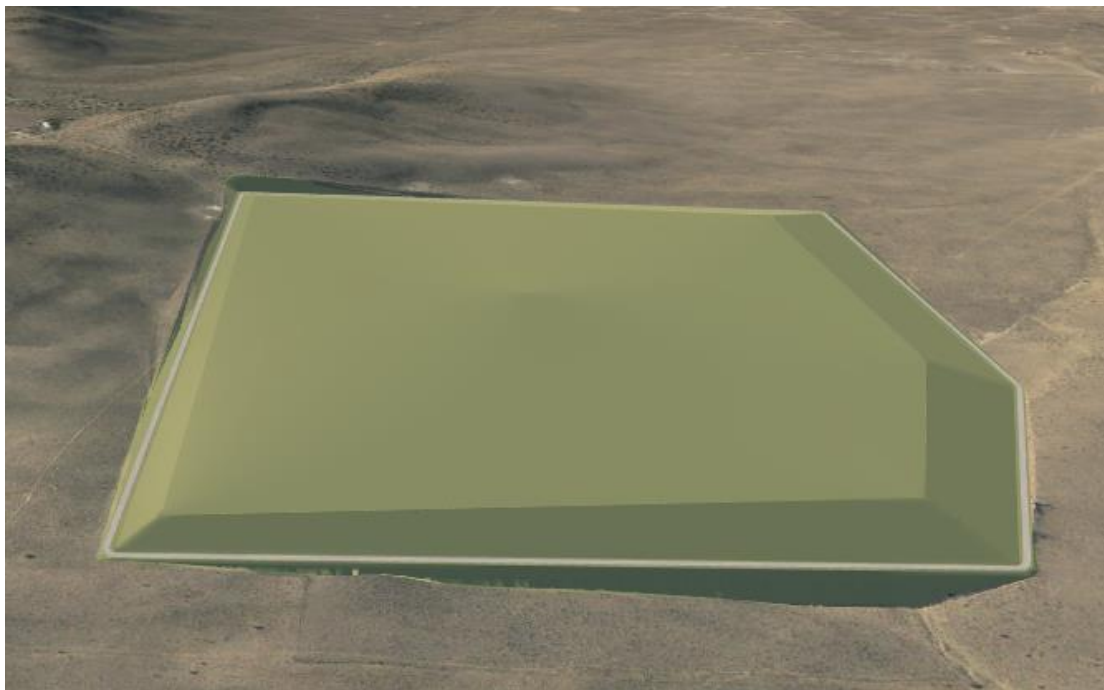
Roth East Conceptual Design Renderings



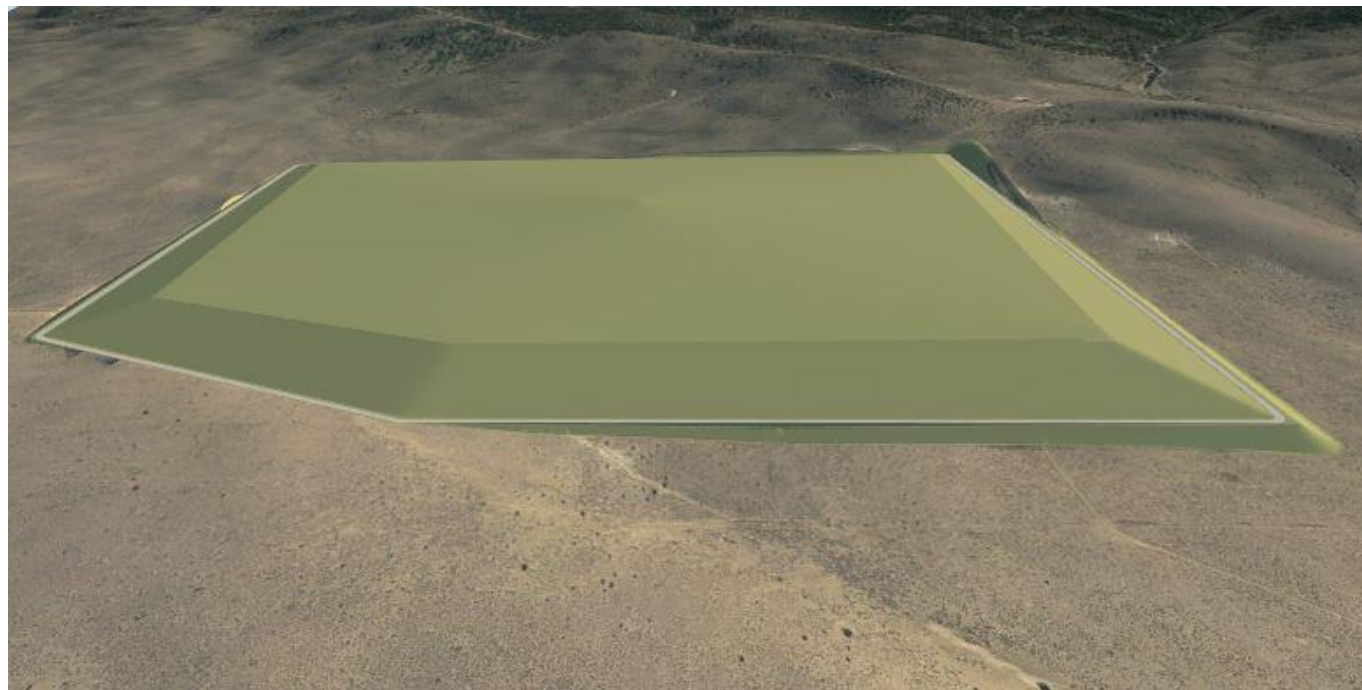
Isometric View from Northeast



Roth East Conceptual Design Renderings



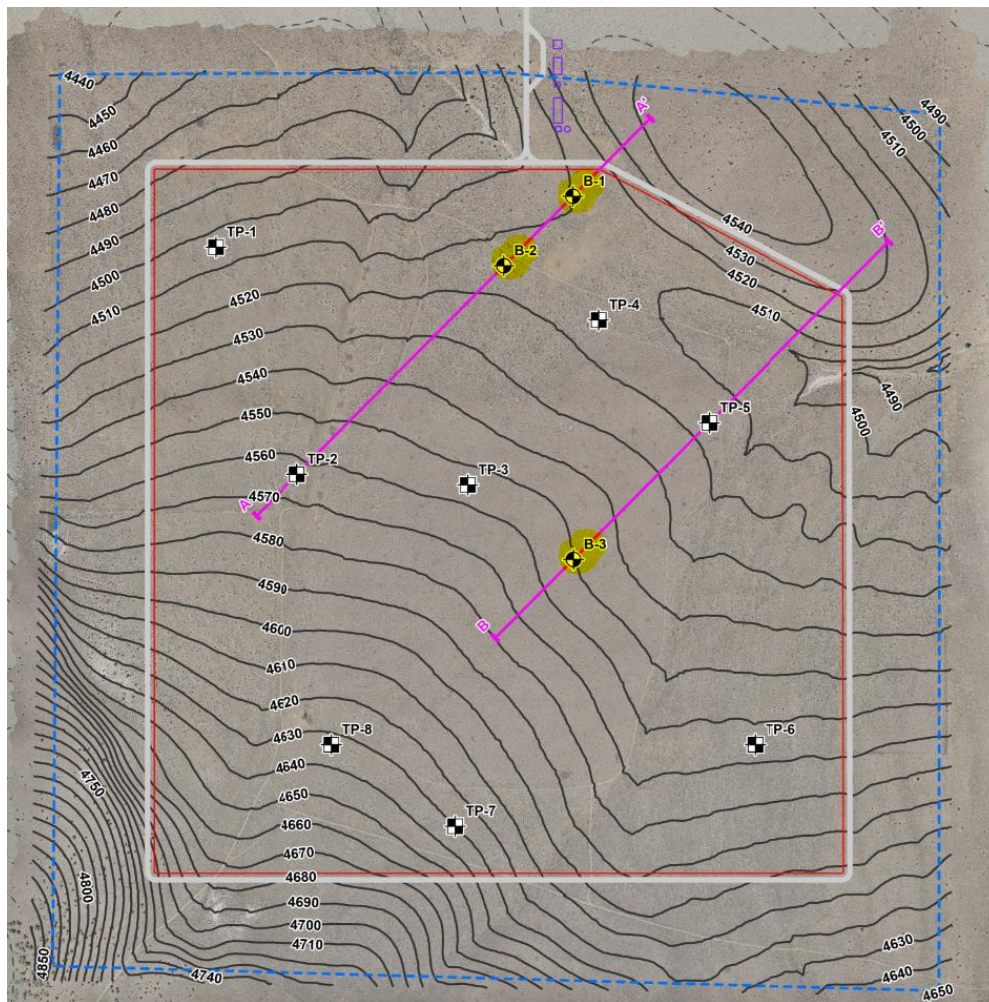
Isometric View from East



Isometric View from North



Roth East Geotechnical Observations



EXPLANATION

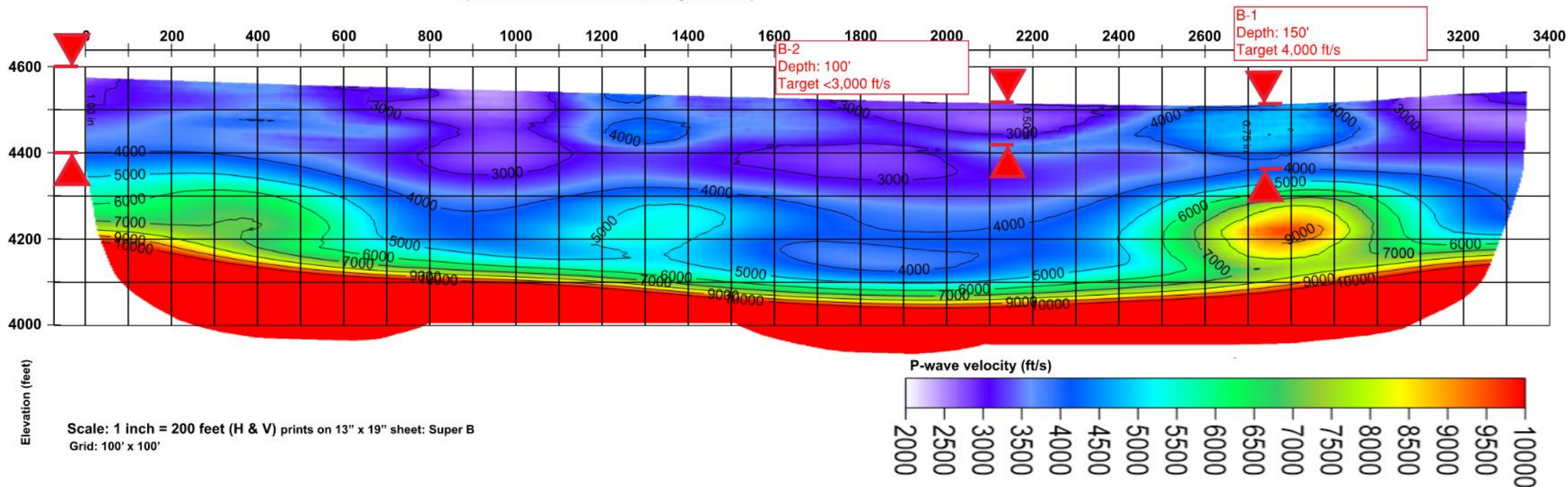
- TP-1 - Test pit name and proposed (future)
- B-1 - Boring name and approximate location
- Approximate location of geophysical profiles
- 10-foot elevation contour (Parametrix, 2023)
- 20-foot elevation contour (USGS; NAVD 88)
- Preliminary Site Layout (Parametrix, 2023)**
 - Approximate footprint of waste cells
 - Approximate property boundary
 - Approximate location of proposed access road
 - Approximate location of structure



Roth East Geotechnical Observations

P-wave Seismic Refraction Tomography: Line A

(167 receivers on 20 foot spacing, 81 shots)

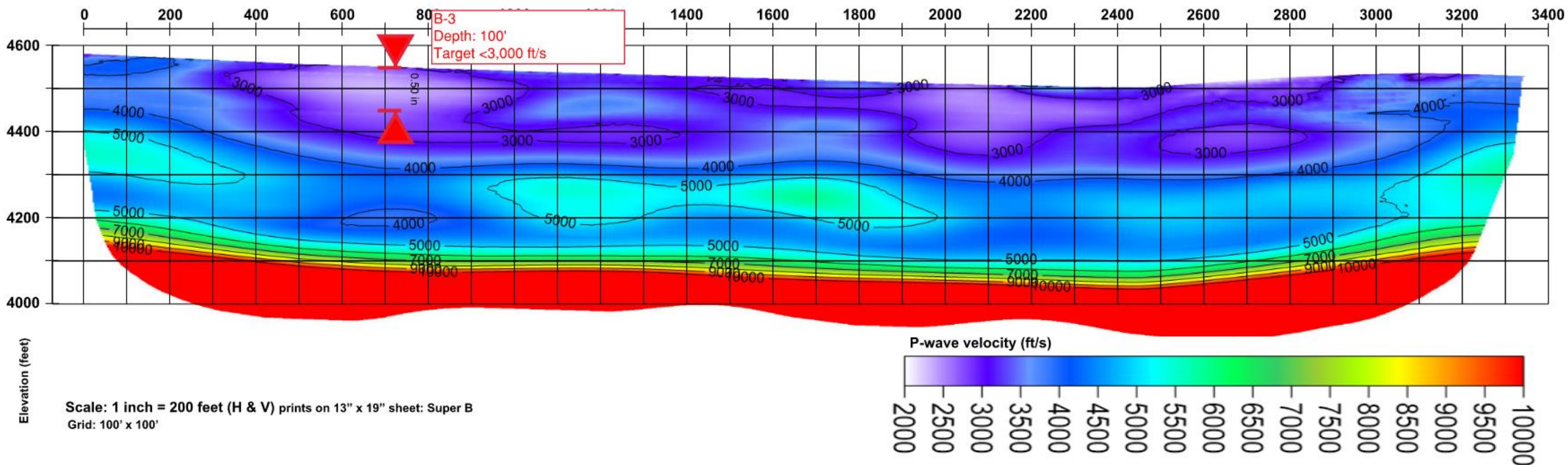




Roth East Geotechnical Observations

P-wave Seismic Refraction Tomography: Line B

(167 receivers on 20 foot spacing, 81 shots)





Roth East Geotechnical Observations

- Borings B-1, B-2, B-3 revealed the predominant presence of gravel, sand, silt, and cobbles within 100-150' deep below ground.
- The borings did not encounter refusal at bedrock, so rock blasting will likely not be needed for development of this site.
- The variety of materials appears favorable for the material needs onsite, including drainage layer, daily cover, intermediate cover, final cover, roads, etc.
- Onsite crushing and processing is anticipated to repurpose existing materials for various SWMF material needs.



Public Comments



Public Comments

3 minutes per person

Based on number of people wishing to comment

Written comments can also be sent to:

managethefuture@deschutescounty.gov



SWAC Discussion



What happens next...

- Solicitation letter for proposals from both property owners
- **SWAC 2024 Meetings:**
 - Jan 16, 2024, 9-11 am: preliminary findings update
 - April 2024, 9-11 am: input on finalist sites
 - May 2024, 9-11 am: finalist site recommendation



Adjourn

