

**DAWSON COUNTY BOARD OF COMMISSIONERS
WORK SESSION AGENDA – THURSDAY, JUNE 1, 2023
DAWSON COUNTY GOVERNMENT CENTER ASSEMBLY ROOM
25 JUSTICE WAY, DAWSONVILLE, GEORGIA 30534
4:00 PM**

NEW BUSINESS

1. Presentation of Request for Funding to Purchase Two Replacement Self-Contained Breathing Apparatus Fill Stations- Emergency Services Director Troy Leist
2. Presentation of Request to Purchase Two Pierce Fire Engines Using Special Purpose Local Option Sales Tax VII Funds- Emergency Services Director Troy Leist
3. Presentation of IFB #419-23 - Full Depth Reclamation Project for Dawson County- Public Works Director Robert Drewry / Purchasing Manager Melissa Hawk
4. Presentation of IFB #420-23 - Replacement of Culverts for Dawson County- Public Works Director Robert Drewry / Purchasing Manager Melissa Hawk
5. Presentation of Board Appointment:
 - a. Avita Community Partners**
 - i. Angelia “Angie” Brown- *reappointment* (Term: July 2023 through June 2026)
6. Discussion of Authorization of Customer Visitation Release Agreement with Quality Tire Recycling Related to County Scrap Tire Disposal Program
7. County Manager Report
8. County Attorney Report

****A Voting Session meeting will immediately follow the Work Session meeting.***

Those with disabilities who require certain accommodations in order to allow them to observe and/or participate in this meeting, or who have questions regarding the accessibility of the meeting, should contact the ADA Coordinator at 706-344-3666, extension 44514. The county will make reasonable accommodations for those persons.



DAWSON COUNTY BOARD OF COMMISSIONERS AGENDA FORM

Emergency Services

Department: _____

Work Session: June 1, 2023

Prepared By: Troy Leist

Voting Session: June 1, 2023

Presenter: Troy Leist

Public Hearing: Yes _____ No X

Agenda Item Title: SCBA Fill Station Replacement Request

Background Information:

Our two SCBA (self-contained breathing apparatus) fill stations do not meet the current safety standards and are well past their service life. Additionally, our current systems are undersized for our current and industry standard 4500psi bottles. Please see attached memo for further explanation.

Current Information:

The cost to replace both systems will be \$141,489.76, including installation.

Budget Information: Applicable: _____ Not Applicable: _____ Budgeted: Yes _____ No XX

Fund	Dept.	Acct No.	Budget	Balance	Requested	Remaining

Recommendation/Motion: _____

Department Head Authorization: _____

Date: _____

Finance Dept. Authorization: Vickie Neikirk

Date: 5/23/23

County Manager Authorization: Joey Leverette

Date: 5-23-23

County Attorney Authorization: _____

Date: _____

Comments/Attachments:

VN- If approved, funding would come from General Fund fund balance.



Troy Leist
Fire Chief

DAWSON COUNTY EMERGENCY SERVICES OFFICE OF THE FIRE CHIEF

MEMORANDUM

TO: Board of Commissioners

FROM: Troy Leist, Fire Chief

RE: SCBA Fill Station Replacement

DATE: May 22, 2023

After completing an evaluation on our two SCBA (self-contained breathing apparatus) fill stations, it has been determined that they are well past their service life and are no longer in compliance with safety standards. We currently have two SCBA fill stations that are manufactured by MAKO. Both units were manufactured in the early 2000s. The average life of a system like this is 15 years. Our two systems are 17, and 20 years old. At the time these systems were manufactured and purchased, they were designed to fill SCBA cylinders that operate at the pressure of 2216psi. As equipment technology evolved, the industry standard has moved to the standard pressure of 4500psi for breathing cylinders. Unfortunately, our current air storage cylinders are only rated for 4500psi. The results of having storage cylinders that are rated at the same psi as our breathing cylinders requires the compressor to continually run during refilling. Having the compressor continually run exposes our crews to an environment that is extremely hot and loud. The compressor operates at a temperature of approximately 350 degrees. The heat generated from the compressor is then transferred to the air being filled into our breathing cylinders. Once filling is complete, the air cools inside the freshly filled breathing cylinders, which results in the pressure dropping. The now cooled cylinders are no longer full which then reduces the amount of consumable air available.

The design and intent of an SCBA fill station is to have the storage capacity to refill breathing cylinders off of the storage cylinders without having the compressor running. Once the breathing cylinders are filled, the compressor is then turned on to refill the storage cylinders. NFPA and current safety standards require that SCBA fill stations have integrated monitoring systems that monitor the air quality. The system is also required to have an auto shut off so if the system detects carbon



Troy Leist
Fire Chief

monoxide or other contaminants in the air, it will shut down the system and indicate a problem. Both of our current systems do not have any of these safety features.

Currently, the only way to determine the air quality is to take an air sample and send it to a laboratory for testing. NFPA requires this manual testing quarterly but it takes time to get the results and is not in real time. Without the current safety standard monitoring systems, there is the possibility for unknowingly putting contaminated air into our breathing cylinders which then may be consumed by our firefighters, with possible fatal results.

I am respectfully requesting additional funding and approval to purchase two SCBA fill stations to replace our current outdated systems.

393 Memory Lane
Dawsonville, GA 30534
Phone 706-344-3666
Fax 706-344-3669



(877) 637-3473

Quote

Quote # QT1697692
Date 05/05/2023
Expires 07/14/2023
Sales Rep Adams, Jeremy L
Shipping Method FedEx Ground
Customer DAWSON COUNTY FIRE DEPT (GA)
Customer # C37753

Bill To

DAWSON COUNTY FIRE DEPT
 393 MEMORY LANE
 DAWSONVILLE GA 30534
 United States

Ship To

DAWSON COUNTY FIRE DEPT
 393 MEMORY LANE
 DAWSONVILLE GA 30534
 United States

Item	Alt. Item #	Units	Description	QTY	Unit Price	Amount
RSF-2322A001			Revolveair, StationaryWAutoCascade, 4 bank auto cascade with separate storage, CGA Adapter	2	\$16,789.14	\$33,578.28
RSC-01026101			6000 psi 5 Stage Compressor 10 Horsepower, 208-230 Volt/ 1 Phase/ 60Hz, CO Dew Point with Cal Kit, English	2	\$40,917.03	\$81,834.06
8HP586C 6000			UN 6000 cylinder with CGA 702-25SE Valve installed Color Mapp Yellow Revolve Air Systems Custom Collar Ring with Fittings kit	8	\$2,208.26	\$17,666.08
RSS-02A44100U			Wall 4-6, 4 Bank Auto Cascade, 4 Storage Cylinder HP Hoses, 10 Feet	2	\$1,355.67	\$2,711.34
Compressor Install			Site survey, install, operate, leak test, train & perform air sample with written report.	2	\$2,000.00	\$4,000.00

Pricing Per Sourcewell RFP #032620

Subtotal \$139,789.76
Shipping Cost \$1,700.00
Tax Total \$0.00
Total \$141,489.76

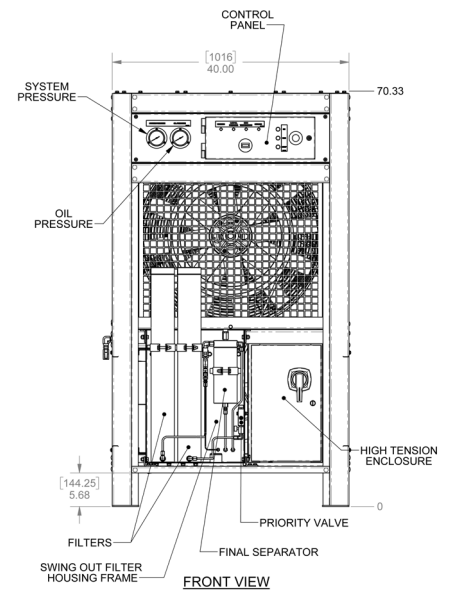
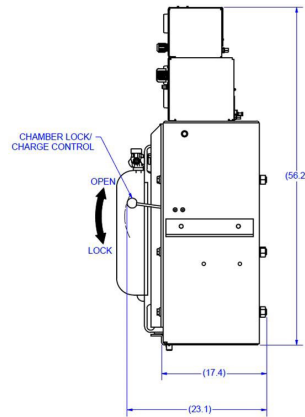
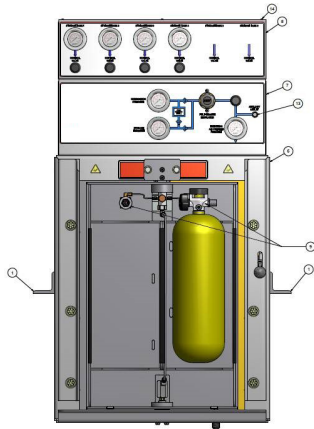
This Quotation is subject to any applicable sales tax and shipping & handling charges that may apply. Tax and shipping charges are considered estimated and will be recalculated at the time of shipment to ensure they take into account the most current information.

All returns must be processed within 30 days of receipt and require a return authorization number and are subject to a restocking fee.

Custom orders are not returnable. Effective tax rate will be applicable at the time of invoice.



QT1697692



REVOLVEAIR FILL STATION

The revolutionary, patented RevolveAir fill station provides maximum safety and performance. The fill station simultaneously charges two breathing air cylinders within the protective chamber while two cylinders are being exchanged on the outside of the chamber. The unit comes complete with safety interlocks, safety gauges, charge and bleed valves, and a pressure regulator for automatic cylinder charging.

FEATURES

- Ergonomically designed
- Fills two cylinders while two are being exchanged
- Offers time savings over competitive charge stations - a minimum of 33% faster
- Designed with safety in mind
- Meets the NFPA 1901 containment standard
- Safety pressure gauges
- Auxiliary outlet unregulated back, regulated front

OPTIONS

- Smart Fill Auto Cascade System
- Cascade panels (2,3,4,5, or 6 banks)
- Auxiliary low-pressure regulator (300 psi/20 bar)
- Auxiliary high-pressure (6000 psi/413 bar)
- 2 or 4 integral storage tank rack
- SCUBA kit

REVOLVEAIR COMPRESSOR



- Five stage compressor - Available in 6,000 PSI or 7,000 PSI
- Low RMP technology (Long Life, Low Noise, High Efficiency/Reduced Heat)
- Vertical design
- Fully enclosed frame
- 10hp, 20hp, and 30hp compressor options
- Designed to UL standards
- Radial layout for reduced vibration and crank shaft loading
- Spin-on type oil filter
- Connecting rods with needle roller bearings
- Stainless steel valve assemblies on all stages
- Latest technology in valve and ring design
- Relief valves on 1st, 2nd, 3rd, & 4th, after cooler on 5th stage
- Pressurized oil lubrication system
- Cast iron block and cylinders
- Water separators on 2nd, 3rd, & 4th stages
- Designed and built in the USA

REVOLVEAIR
SYSTEMS
CATALOG



VOLUME 1

1.877.MES.FIRE | MESFIRE.COM
INFO@REVOLVEAIR.COM



ABOUT

REVOLVEAIR SYSTEMS



RevolveAir Systems
products are proudly
made in America.

In 2020, Municipal Emergency Services (MES) acquired the intellectual property, designs, patents and trademarks for the RevolveAir, Smart Fill and RevolveAir Connect products. MES began full production and sales of the complete product line of breathing air compressors, charge stations and storage solutions to be sold under the RevolveAir Systems brand in early 2021. The RevolveAir Systems is a staple in fire departments across the United States and has a strong customer following with products that provide unmatched features and benefits.

Established in 2001, Municipal Emergency Services has quickly grown to be the largest supplier of 3M Scott Air-Paks, Honeywell (Morning Pride), Fire-Dex, Hurst Jaws of Life, Matex Hose, 5.11 Tactical, Akron Brass and Dragon Fire Gloves to first responders in North America. With over 180 sales representatives, 110+ mobile service technicians, and 18 in-house service centers strategically located around the United States we can assure that our customers are purchasing quality name brand equipment that remains functioning to the appropriate NFPA and manufacturers specifications throughout the life of the product.

Our sales representatives have over 1,300+ years of combined experience in first responder service and 8,000+ hours of certified training which adds up to better product knowledge, service, and training for our customers. We supply equipment for Firefighting, Law Enforcement, Hazmat, Confined Space, Urban Search and Rescue, and Emergency Medical Services to Municipal, Volunteer and Federal government sectors. MES is built on three distinct business platforms giving first responders the opportunity to fulfill their equipment needs through our 290+ strong first responder focused sales and service team, an extensive online store or through our Federal Government division which caters to the specific needs of military and federal agency first responders.

MES supports its customers with a nationwide warehousing system that carries over \$4 million of 3M Scott Air-Paks and accessories, 800+ sets of turnout gear, 2,000+ pairs of boots not to mention numerous other products in stock to meet the immediate needs of our customers.

1.877.MES.FIRE |

REVOLVEAIR
SYS A S

| REVOLVEAIR.COM

REVOLVEAIR

FILL STATION & CASCADE SYSTEMS



AUTO CASCADE SYSTEMS

A fully automatic cascade system with no valves to turn. The Smart Fill System is an easier and more efficient way to cascade.



MANUAL CASCADE SYSTEMS

Mounted on top of charge station and available in 2 - 6 bank systems with a valve for each bank that can open / close to cascade.



The revolutionary, patented RevolveAir fill station provides maximum safety and performance simultaneously charging two breathing air cylinders within the protective chamber while two cylinders are being exchanged on the outside of the chamber. The unit comes complete with safety interlocks, safety gauges, charge and bleed valves and a pressure regulator for automatic cylinder charging.

FEATURES

- Ergonomically designed
- Fills two cylinders while two are being exchanged
- Offers time savings over competitive charge stations
- A minimum of 33% faster
- Designed with safety in mind
- Tested to the NFPA 1901 Containment Standard
- Safety pressure gauges
- Auxiliary outlet unregulated back, regulated front
- Automatic Storage refill valve
- Two Year Warranty

OPTIONS

Smart Fill Auto Cascade System
| Cascade Panels (2,3,4,5,6, or 8 banks) | Auxiliary low-pressure regulator (300 psi/20 bar) | Auxiliary high-pressure regulator (6000 psi/ 413 bar) | 2 or 4 integral storage tank rack | SCUBA kit

REVOLVEAIR DIMENSIONS

W/ Attached Storage: 30" Wide x 51" Deep

W/O Storage: 30" Wide x 22" - 32" Deep (depending on options)

SMART FILL

HIGH PRESSURE COMPRESSOR

BENEFITS

- LONG LIFE
- LOW NOISE
- HIGH EFFICIENCY
- REDUCED HEAT

STANDARD FEATURES

- Five stages
- Latest technology in valve & ring design
- Spin-on type oil liter
- Pressurized oil lubrication system
- Cast iron block & cylinders
- Designed & built in the USA
- Relief valves on 1st, 2nd, 3rd & 4th stage
- Connecting rods with needle roller bearings
- Stainless steel valve assemblies on all stages
- Radial layout for reduced vibration and crankshaft loading
- Intercoolers on 1st, 2nd, 3rd & 4th, after cooler on the 5th stage
- Water separators on 2nd, 3rd & 4th stages



DIMENSIONS

WIDTH 34" (side to side)

DEPTH 42" (front to back)

HEIGHT 68"

FAN DIAMETER 17.2" (R510)

FAN DIAMETER 29.5" (R520/530)

R510

5 CYLINDER, 5 STAGE BREATHING AIR COMPRESSOR

MODEL	MAX WORKING PRESSURE		CAPACITY (1)		MOTOR	
	psig	bar	scfm	l/min	hp	Kw
R510-6	6,000	414	12.5	354	10	7.5

5 CYLINDER, 5 STAGE BREATHING AIR COMPRESSOR

MODEL	MAX WORKING PRESSURE		CAPACITY (1)		MOTOR	
	psig	bar	scfm	l/min	hp	Kw
R510-7	7,000	517	12	340	10	7.5

R520/ R530

5 CYLINDER, 5 STAGE BREATHING AIR COMPRESSOR

MODEL	MAX WORKING PRESSURE		CAPACITY (1)		MOTOR	
	psig	bar	scfm	l/min	hp	Kw
R520-6	6,000	414	24	680	20	15
R530-6	6,000	414	36	1020	30	22.4

5 CYLINDER, 5 STAGE BREATHING AIR COMPRESSOR

MODEL	MAX WORKING PRESSURE		CAPACITY (1)		MOTOR	
	psig	bar	scfm	l/min	hp	Kw
R520-7	7,000	517	23.5	665	20	15
R530-7	7,000	517	34.8	985	30	22.4

ADDITIONAL FEATURES

Oil Pressure Switch • ACD- Automatic Drain Block with Solenoid

1) Capacity is referenced to standard inlet conditions (ASME Standard) @ 80% of the compressor's maximum working pressure. Tolerance +5/-4%

2) Specifications are subject to change

REVOLVEAIR

STORAGE OPTIONS

VERTICAL OR HORIZONTAL STORAGE

Storage units are designed as freestanding modules or can be integrated into the charge station. Vertical storage units are available with two or four ASME or UN/ISO cylinders. Horizontal up to six cylinders.



VERTICAL ASME



HORIZONTAL ASME

FEATURES

- Bulk or cascade plumbing
- Meets all ASME, UN/ISO, TC, CRN codes
- Available in a variety of configurations
- Storage system size meets requirements
- Operational in the event of a power failure
- 10 year hydro test on all UN/ISO versions

OPTIONS (Three Variations of Cylinders)

OPTION ONE

UN/ISO 509 scf 6000 psi/413 bar with CGA 702 valve

OPTION TWO

ASME 537 scf @ 7000 psi/ 483 bar with service valve, burst disc, and drain plug

OPTION THREE

ASME 525 scf @ 6000 psi/ 413 bar with service valve, burst disc and drain plug

REVOLVEAIR SERVICES

COMPRESSOR SERVICE

We are proud to offer premium service and maintenance of your RevolveAir compressors and cascade systems. The service technicians can inspect and repair all RevolveAir compressors on-site with our state of the art mobile service centers.

MES ON-SITE SERVICE:

- Inspection
- Testing & Calibration
- Repairs & Adjustments
- Preventative Maintenance
- Training

SERVICE CHECKLIST

- Perform a thorough inspection and functional check of the compressor
- Conduct a pre-service air-sample per NFPA 1989 standards
- Drain the compressor oil, inspect and re-oil with RevolveAir System RS-800 synthetic oil
- Clean or replace the oil/water separators
- Replace the purification cartridges and cartridge holder o-rings
- Inspect and clean the auto condensate system and rebuild the auto-condensate system as necessary
- Recondition the flow-fuse(s) as needed
- Install a new air intake filter
- Conduct preventative maintenance on the diesel engine if applicable
- Conduct a post-service air sample per NFPA 1989 standards
- Calibrate the CO sensor if available and reset the controller service maintenance reminders

FILL CONTROL

**AUXILIARY
OUTLET**

REVOLVEAIR
SYSTEMS

1.877.MES.FIRE | MESFIRE.COM | INFO@REVOLVEAIR.COM



MADE IN AMERICA



DAWSON COUNTY BOARD OF COMMISSIONERS AGENDA FORM

Emergency Services

Department: _____

Work Session: June 1, 2023

Prepared By: Troy Leist

Voting Session: June 1, 2023

Presenter: Troy Leist

Public Hearing: Yes _____ No

Agenda Item Title: Fire Engine Purchase SPLOST VII

Background Information:

Replacing emergency vehicles on a schedule is essential to being mission ready. As call volumes increase and vehicles are being pushed it is imperative to have a reliable fleet. Down time with no vehicle to put in its place can leave gaps in coverage. Purchasing these new engines will allow us to rotate older engines into reserve status, giving us a cushion when vehicles break down or need servicing.

Current Information:

I am requesting approval to order two Pierce fire engines utilizing SPLOST VII funds. These two engines will take 17-20 months to be built and delivered. Utilizing several programs through Pierce, the county will save approximately \$38,294. The total cost will be \$1,412,956, with half being due at the time of placing the order (\$706,478). The remaining balance will be due at the time of delivery and acceptance.

Budget Information: Applicable: _____ Not Applicable: _____ Budgeted: Yes _____ No _____

Fund	Dept.	Acct No.	Budget	Balance	Requested	Remaining

Recommendation/Motion: _____

Department Head Authorization: _____

Date: _____

Finance Dept. Authorization: Vickie Neikirk

Date: 5/23/23

County Manager Authorization: Joey Leverette

Date: 5-23-23

County Attorney Authorization: _____

Date: _____

Comments/Attachments:



Option List

5/19/2023

Customer: Dawson County Emergency Services
Representative: Binion, Guy
Organization: Ten-8 Fire & Safety, LLC
Requirements Manager:
Description: 2023 Dawson Co. Saber pumper
Body: Pumper, Medium, Aluminum, 2nd Gen, Saber
Chassis: Saber FR Chassis

Bid Number: 1123
Job Number:
Number of Units: 2
Bid Date: 05/24/2023
Stock Number:
Price Level: 45 (Current: 45)
Lane:

Line	Option	Type	Option Description	Qty
1	0074080		Build-to-Order, Pierce Florida Product - 2nd Gen Pumper	1
2	0766611		Boiler Plates, Pumper	1
			Fire Department/Customer - Dawson County	
			Operating/In conjunction W-Service Center - Operating	
			Miles - 75 Miles	
			Number of Fire Dept/Municipalities - 5	
			Bidder/Sales Organization - Ten-8 Fire and Safety, LLC	
			Delivery - Delivery representative	
			Dealership/Sales Organization, Service - Ten-8 Fire and Safety, LLC	
3	0661794		Single Source Compliance	1
4	0584455		Manufacture Location, Bradenton, Florida	1
5	0584453		RFP Location: Bradenton, Florida	1
6	0588609		Vehicle Destination, US	1
7	0764706	SP	BMP Truck- Pre-Approval at Bid - Approved Option Will be Required at Booking	1
8	0610784		Comply NFPA 1901 Changes Effective Jan 1, 2016, With Exceptions	1
9	0533347		Pumper/Pumper with Aerial Device Fire Apparatus	1
10	0588611		Vehicle Certification, Pumper	1
11	0568412		Agency, Apparatus Certification, Pumper/Tanker, Third Party, PMFD	1
12	0766110		Consortium, Sourcwell	1
13	0537375		Unit of Measure, US Gallons	1
14	0030006		Bid Bond Not Requested	0
15	0807711		Performance Bond, 100% Req'd	1
16	0000007		Approval Drawing	1
17	0002928		Electrical Diagrams	1
18	0632451		Saber FR Chassis	1
19	0629024		Chassis Discount, Saber FR	1
20	0000110		Wheelbase	1
			Wheelbase - 187.50"	
21	0000070		GVW Rating	1
			GVW rating - 45,000#	
22	0649713		Frame Rails, 10.25" x 3.50" x .375", Saber FR/Enf	1
23	0020018		Frame Liner Not Req'd	0
24	0807049		Axle, Front, Oshkosh TAK-4, Non Drive, 18,000 lb, Saber FR, BMP/STK ONLY	1
25	0633905		Suspension, Front TAK-4, 18,000 lb, Enforcer/SFR	1
26	0087572		Shock Absorbers, KONI, TAK-4, Qtm/AXT/Imp/Vel/DCF/Enf	1
27	0000322		Oil Seals, Front Axle	1
28	0582936		Tires, Front, Goodyear, G289 WHA, 315/80R22.50, 20 ply	1
29	0019575		Wheels, Front, Alcoa, 22.50" x 9.00", Aluminum, Hub Pilot	1
30	0640711		Axle, Rear, Dana S26-190, 27,000 lb Saber/Enforcer	1
31	0544253		Top Speed of Vehicle, 68 MPH	1
32	0565380		Suspen, Rear, Single Slipper Spring, 27,000 lb, Saber/Enforcer	1
33	0000485		Oil Seals, Rear Axle	1
34	0782552		Tires, Rear, Goodyear, Endurance RSA, 12R22.50, LRH, Single	1
35	0654792		Wheels, Rear, Alcoa-Accuride, 22.50" x 8.25", Aluminum-Steel, Hub Pilot, Single	1
36	0568081		Tire Balancing, Counteract Beads	1
37	0620570		Tire Pressure Monitoring, RealWheels, AirSecure, Valve Cap, Single Axle	1
			Qty, Tire Pressure Ind - 6	
38	0003245		Axle Hub Covers w/center hole, S/S, Front Axle	1
39	0001960		Axle Hub Covers, Rear, S/S, High Hat (Pair)	1
40	0002045		Mud Flap, Front and Rear, Pierce Logo	1
41	0760600		Chains, Onspot, Automatic Tire, Custom 16" Heavy Duty Application	1

42	0646362	Chocks, Wheel, Worden HWGY- SB, Super Gripper Qty, Pair - 01	1
43	0646364	Mounting Brackets, Chocks, Worden Safety, Model U815T Location, Wheel chock - In front of left rear wheel Qty, Pair - 01	1
44	0010670	ABS Wabco Brake System, Single rear axle	1
45	0030185	Brakes, Knorr/Bendix 17", Disc, Front, TAK-4	1
46	0627930	Brakes, Bendix, Cam, Rear, 16.50 x 8.63"	1
47	0020784	Air Compressor, Brake, Cummins/Wabco 18.7 CFM	1
48	0644232	Brake Reservoirs, 4,272 Cubic Inch Minimum Capacity, Saber FR/Enforcer	1
49	0644228	Air Dryer, Wabco System Saver 1200 IWT, Heated, 10" Frame, Standen, SFR/Enf	1
50	0000790	Brake Lines, Nylon	1
51	0000854	Air Inlet, w/Disconnect Coupling Location, Air Coupling(s) - a) DS Step Well, Forward Qty, Air Coupling (s) - 1	1
52	0805875	Engine, Cummins L9, 450 hp, 1250 lb-ft, W/OBD, EPA 2024, Saber FR/Enforcer	1
53	0001244	High Idle w/Electronic Engine, Custom	1
54	0687994	Engine Brake, Jacobs Compression Brake, Cummins Engine Switch, Engine Brake - e) ISC/ISM/ISL9/ISX Hi Med Lo	1
55	0644227	Clutch, Fan, Air Actuated, Saber FR/Enforcer	1
56	0640477	Air Intake, Metal Screen, Saber FR/Enforcer	1
57	0794761	Exhaust System, 4", 2017 L9/X10 Engine, Horizontal, Right Side	1
58	0788765	Radiator, Saber FR/Enforcer	1
59	0001090	Cooling Hoses, Rubber	1
60	0001125	Fuel Tank, 65 Gallon, Left Side Fill	1
61	0001129	Lines, Fuel	1
62	0618791	DEF Tank, 4.5 Gallon, DS Fill, Forward of Axle, Common Air Bottle Door	1
63	0723716	Fuel Priming Pump, Electronic, Automatic, Cummins, No Swt Req'd	1
64	0552712	Not Required, Shutoff Valve, Fuel Line	0
65	0553019	Cooler, Engine Fuel, Imp/Vel, AXT/Qtm/Sab/DCF/SFR/Enf	1
66	0690880	No Selection Required From This Category	0
67	0887559	Trans, Allison 6th Gen, 3000 EVS P, w/Prognostics, Imp/Vel/SFR/Enf	1
68	0625329	Transmission, Shifter, 5-Spd, Push Button, 3000 EVS	1
69	0684459	Transmission Oil Cooler, Modine, External	1
70	0024895	Mode, Downshift, Aggressive downshift to 2nd, w/engine brake, 5 speed	1
71	0801878	Fluid, 3000 Series Trans, Allison Approved TES-668 Synthetic, IPOS, Custom	1
72	0001370	Driveline, Spicer 1710	1
73	0669988	Steering, Sheppard M110 w/Tilt, TAK-4, Eaton Pump, w/Cooler	1
74	0509229	Steering Wheel, 2 Spoke	1
75	0550144	Logo/Emblem, on Horn Button Text, Row (1) One - Dawson Text, Row (2) Two - County Text, Row (3) Three - Fire	1
76	0012245	Bumper, 19" Extended, Saber FR/Enforcer	1
77	0637814	Tray, Hose, Center, 19" Bumper, Outside Air Horns, 13" Deep, 10" Below/3" Above Grating, Bumper extension - Grating, Rubber Capacity, Bumper Tray - 21) 150' of 1.75"	1
78	0630809	Cover, Aluminum Treadplate, One (1) D-Ring Latch, Hose Tray, Notched Location - both sides Stay arm, Tray Cover - c)Pneumatic Stay Arm, Dual	1
79	0630841	Tray, (1) Hose Left Side of Bumper, 13" Deep Grating, Bumper extension - Grating, Rubber Capacity, Bumper Tray - 39) 200' of 1.00" Forestry	1
80	0630812	Cover, Aluminum Treadplate, One (1) D-Ring Latch, Hose Tray Stay arm, Tray Cover - b) Pneumatic Stay Arm	1
81	0614646	No Lift & Tow Package, Imp/Vel, AXT, SFR/Enf	0
82	0002270	Tow Hooks, Chrome	1
83	0632360	Cab, Saber FR, 7010	1
84	0647919	Engine Tunnel, ISL, Saber FR/Enforcer	1
85	0633594	Rear Wall, Interior, Adjustable Seating	1
86	0632103	Rear Wall, Exterior, Cab, Saber FR/En	1

	Material, Exterior Rear Wall - Aluminum Treadplate	
87	0639727 Cab Lift, Elec/Hyd, Manual Override, Saber FR/Enforcer	1
88	0636939 Grille, Polished Stainless Steel, Front of Cab, Saber FR	1
89	0647932 Not Required, Trim, S/S Band, Across Cab Face, AXT/Saber/Enforcer	0
90	0015440 No Chrome Molding, On side of cab	0
91	0521669 Mirrors, Retractable, West Coast Style, Htd/Rmt, w/Htd/Rmt Convex	1
92	0648172 Door, Full Height, Saber FR/Enforcer 4-Door Cab, Raised Roof	1
	Key Model, Cab Doors - 1041	
	Cab, Exterior Door Handle, Finish - 4-Door, Chrome/Black	
93	0655543 Door Panel, Brushed Stainless Steel, Saber/Enforcer 4-Door Cab	1
94	0528958 Not Required, Controls, Electric Window, AXT, Quantum, Saber, Enforcer	0
95	0638310 Steps, 4-Door Cab, Saber FR/Enforcer	1
	Step Well Material - Aluminum Treadplate	
96	0770194 Handrail, Exterior, Knurled, Alum, 4-Door Cab	1
97	0892638 Lights, Cab & Crw Cab Acs Stps, P25, LED w/Bezel, 6lts	1
	Color, Trim - Chrome Housing	
98	0583698 Fenders, S/S on cab, Extra Wide, Saber/Enf	1
99	0630508 Window, Side of C/C, Fixed, Passenger Side Only, Saber FR/Enforcer	1
100	0012090 Not Required, Windows, Front/Side of raised roof	0
101	0779033 Not Required, Windows Rear of Crew Cab, Saber FR/Enforcer	0
102	0722796 Dash, Poly, Saber FR/Enforcer	1
103	0607217 Mounting Provisions, 3/16" Alum, Full Engine Tunnel, Saber FR/Enforcer	1
	Mounting Provision Spacing - .75"	
	Material Finish, Cab Interior - Painted	
104	0797235 Cab Interior, Imperial 1200 Headliner, Saber FR/Enforcer	1
	Color, Cab Interior Vinyl/Fabric - c) Black	
	Engine Tunnel Cover - Black Endure Vinyl	
	Cab Interior Rear Wall Material - Painted Aluminum	
105	0753903 Cab Interior, Paint Color, Saber FR/Enforcer	1
	Color, Cab Interior Paint - i) fire smoke gray	
106	0052100 Floor, Rubber Padded, Cab & Crew Cab, Saber/Enforcer	1
107	0741237 HVAC, Saber FR, CARE	1
	HVAC System, Filter Access - Removable Panel	
	Auxiliary Cab Heater - Both	
	HVAC System, Control Loc. - Panel Position #12	
108	0639675 Sun Visor, Smoked Lexan, AXT, Imp/Vel, Saber FR/Enforcer	1
	Sun Visor Retention - Thumb Latch	
109	0634328 Grab Handles, Driver and Officer Door Posts, Saber FR/Enforcer	1
110	0002526 Light, Engine Compt, All Custom Chassis	1
111	0631830 Fluid Check Access, Saber FR/Enforcer, Arrow XT	1
	Latch, Door, Storage - Lift and Turn Latch	
112	0583039 Not Required, Side Roll and Frontal Impact Protection	0
113	0622618 Seating Capacity, 5 Seats	1
114	0636957 Seat, Driver, Pierce PSV, Air Ride, High Back, Saber FR/Enforcer	1
115	0632925 Seat, Officer, Pierce PSV, Air Ride, SCBA, Saber FR/Enforcer	1
116	0002517 Not Required, Radio Compartment	0
117	0890658 Cabinet, Rear Facing, LS, 23 W x 43 H x 26.75 D, 2" Web, SFR/Enf	1
	Type of fastener - 2" side release	
	Restraint Location - Inboard	
	Light, Short Cabinet - Pierce, Interior, Right Side	
	Material Finish, Shelf - Painted - Cab Interior	
	Shelf/Tray, Cabinet - (2) Shelves, Adjustable, 1.25" Up-Turned Lip	
	Louvers, Cabinet - 0-No Louvers	
118	0102783 Not Required, Seat, Rr Facing C/C, Center	0
119	0632848 Seat, Rear Facing C/C, PS Outboard, Pierce PSV, SCBA, Saber FR/Enforcer	1
120	0108189 Not Required, Seat, Forward Facing C/C, DS Outboard	0
121	0632658 Seat, Forward Facing C/C, Center, (2) Pierce PSV, SCBA, Saber FR/Enforcer	1
122	0108190 Not Required, Seat, Forward Facing C/C, PS Outboard	0
123	0566653 Upholstery, Seats In Cab, Turnout Tuff	1
	Color, Cab Interior Vinyl/Fabric - c) Black	
124	0543991 Bracket, Air Bottle, Hands-Free II, Cab Seats	4
	Qty, - 04	
025	0603866 Seat Belt, Dual Retractor, ReadyReach 18" er FR/Enforcer	1

	Seat Belt Color - Red	
126 0602464	Helmet Storage, Provided by Fire Department, NFPA 2016	1
127 0647647	Lights, Dome, FRP Dual LED 4 Lts	1
	Color, Dome Lt - Red & White	
	Color, Dome Lt Bzl - Black	
	Control, Dome Lt White - Door Switches and Lens Switch	
	Control, Dome Lt Color - Lens Switch	
128 0555812	Handlts, (2) Streamlight, Fire Vulcan, 44451 C4 LED, Tail lights, 12v, Orange	1
	Location, Lights - in cab	
129 0644187	Cab Instruments, Black Gauges, Black Bezels, Saber FR/Enforcer	1
	Emergency Switching - Individual Switches	
130 0002544	Air Restriction Indicator - Pierce Chassis	1
131 0543751	Light, Do Not Move Apparatus	1
	Alarm, Do Not Move Truck - Steady Alarm	
132 0637359	Not Required, Door Open Indicator w/Do Not Move Truck Light, Enf/Saber FR	0
133 0754774	Switching, Cab Instrument Lower Console & Overhead, Rocker, Saber	1
134 0802940	Wiper Control, 2-Speed with Intermittent, Saber FR/Enforcer	1
	Location, Wiper Control - Standard Location	
135 0548004	Wiring, Spare, 15 A 12V DC 1st	2
	Qty, - 02	
	12vdc power from - Battery direct	
	Wire termination - 15 amp power point plug	
	Location, Spare Wiring - Officer Dash	
136 0743033	Bin, Center Dash Console	1
137 0763646	Vehicle Information Center, LCD On Gauge Cluster Only, Sab/Enf	1
	System Of Measurement - US Customary	
138 0734857	Collision Mitigation, HAAS Alert (R2V), HA5	1
	Subscription, HAAS R2V - R2V - 5 Year Data Plan Subscription	
139 0610240	Vehicle Data Recorder w/Seat Belt Monitor	1
140 0663247	Intercom, Firecom 5100D Single Radio, 4-Pos, D,O,2C	1
	Location - TBD	
	Location, Intercom, C Cab - 2) 1 rearward and 1 forward	
141 0006240	Cable, Radio to Intercom Interface, Firecom, 1 Radio	1
	Radio, First Two-Way Make - Motorola High Power	
	Radio, First, Two-Way Model - Motorola APX 7500 HP	
142 0681389	Headset, Firecom, UH-51 Under Helmet, Radio Transmit	2
	Qty, - 02	
	Location, Headset - Driver Seat and Officer Seat	
143 0681384	Headset, Firecom, UH-52 Under Helmet, Intercom Only	1
	Qty, - 01	
	Location, Headset - PS Outbrd, Rear Fcng Seat	
144 0681408	Hangers For Headsets, NFPA, Each	3
	Qty, - 03	
	Location, Headset Hangers - Driver Seat, Officer Seat and PS Outbrd, Rear Fcng Seat	
145 0696439	Antenna Mount, Custom Chassis, Cable Routed to Instrument Panel Area	1
	Qty, - 01	
	Location, Antenna Mount - Right Side	
146 0808099	Camera, Pierce, 7" HD, R, Camera, AHD	1
	Color - 1) black	
	Location, Camera Monitor - Driver Side Dash	
147 0624249	Electrical Power/Signal Protection & Control, Saber FR	1
148 0624260	Electrical System, Saber FR	1
149 0079166	Batteries, (4) Exide Grp 31, 950 CCA ea, Threaded Stud	1
150 0008621	Battery System, Single Start, All Custom Chassis	1
151 0002698	Battery Compartment, Saber/Enforcer	1
152 0617265	Charger, Sngl Sys, IOTA, DSL 45, 45 amp, Kussmaul 091-94-12 Indicator	1
153 0813478	Location Picked From The Body Location	1
154 0813481	Location Picked From The Cab Location	1
155 0012782	Location, Charger, Front Left Side Body Compartment	1
	Location, Battery Chrgr/Cmpr - High On Left Wall	
156 0530951	Location, Bat Chrg Ind, DS Behind Cab	1
157 0782026	Shoreline, 20A 120V, Blue Sea Sure E	1

		Qty, - 01	
		Connection, Shoreline - battery charger	
		Color, Cover, BI Sea Inlet - Red	
158	0020168	Shoreline Cab Loc, Cab, Saber FR	1
		Location, Shoreline(s) - DS Cab Side	
159	0647729	Alternator, 320 amp, Delco Remy 40SI	1
160	0644176	Load Manager, Integrated In Electrical System, Saber FR/Enforcer	1
161	0783153	Headlights, Rect LED, JW Spkr Evo 2, AXT/DCF/Enf/Imp/Sab/Vel	1
		Color, Headlight Bez - Chrome Bezel	
162	0802935	Light, Directional, WIn M62T* LED, Cmn Bzl, Above Headlights, Sab/Enf	1
		Color, Lens, LED's - Clear	
		Color, Q Bezel and Trim - Polished Chrome	
		Flash Pattern, Directional Lts - Steady On (Arrow)	
163	0620054	Light, Directional/Marker, Intermediate, Weldon 9186-8580-29 LED 2lts	1
164	0626612	SP Lights, Clearance/Marker/ID, Front, WIn 0SA00MCR LED 5 Lts, Saber FR/Enf	1
		Light Guard - Without Guard	
165	0647899	Lights, Directional/Marker, Cab Front Side, Weldon 9186-8580-29 LED, Sab/Enf	1
166	0591889	Lights, Clearance/Marker/ID, Rear, WIn 0SR00MCR LED 7Lts	1
167	0804519	Lights, Tail, WIn M62BTT* Red Stop/Tail & M62T* Amber Dir Arw	1
		Color, Lens, LED's - Clear	
		Color, Trim - Chrome Trim	
		Flash Pattern, Directional Lts - Steady On (Arrow)	
168	0805618	Lights, Backup, WIn M62BU	1
		Color, Trim - Chrome Trim	
169	0889577	Bracket, License Plate & Light, P25 LED, Stainless Brkt	1
		Color, Trim - Chrome Housing	
170	0589905	Alarm, Back-up Warning, PRECO 1040	1
171	0687604	Lights, Perimeter Cab, Truck-Lite 6060C LED 4Dr, Grommet Mt	1
172	0617866	Lights, Perimeter Pump House, Truck-Lite 6060C LED 2lts	1
173	0683575	Lights, Perimeter Body, Truck-Lite 6060C LED 2ts, Rear Step	1
		Control, Perimeter Lts - Parking Brake Applied	
174	0566799	Lights, Step, P25 LED 4lts, Ign, Prk Brk Activated	1
175	0698589	Lights, Side Scene, WIn M9LZC Gradient LED, 1st	1
		Qty, - 01	
		Switch, Lt Control 1 DC,1 - a) DS Switch Panel	
		Switch, Lt Control 2 DC,2 - e) No Control	
		Switch, Lt Control 3 DC,3 - d) No Control	
		Switch, Lt Control 4 DC,4 - d) No Control	
		Location, Scene Lights - DS Rear Of Crew Cab Door, 1lt	
176	0698585	Lights, Side Scene, WIn M9LZC Gradient LED, 2nd,	1
		Location, Lights - One high and rearward of PS crew cab door	
		Qty, - 1	
		Switch, Lt Control 1 DC,1 - a) DS Switch Panel	
		Switch, Lt Control 2 DC,2 - e) No Control	
		Switch, Lt Control 3 DC,3 - d) No Control	
		Switch, Lt Control 4 DC,4 - d) No Control	
177	0776357	Light, Visor, WIn, 12V P*H2* Pioneer, Cnt Feature, 1st	1
		Qty, - 01	
		Location, driver's/passenger's/center - Centered	
		Color, WIn Lt Housing - Black Paint	
		Control, Scene Lts - Cab Sw Panel DS and Cab Sw Panel PS	
		Scene Light Optics - Flood	
178	0740247	Lights, HiViz FT-MB-18-TR-*-* , 25.2", 2nd	1
		Location - On top of PS catwalk	
		Qty, - 01	
		Control, Scene Lts - Cab Sw Panel DS	
		Color, Lt Housing HiViz - Black	
		Scene Light Optics - flood	
179	0740249	Lights, HiViz FT-MB-18-TR-*-* , 25.2", 1st	1
		Location - On top of DS catwalk	
		Qty, - 01	
		Control, Scene Lts - Cab Sw	DS

	Color, Lt Housing HiViz - Black	
	Scene Light Optics - flood	
180 0689891	Lights, Deck, WIn (2) PFBP12C LED Rear Flood Lights	1
	Switch, Scene Lt Cntrl - lh) Light Head	
181 0645877	Lights, Hose Bed, Sides, Dual LED Light Strips	1
	Control, Hose Bed Lts - Cup Switch At Rear	
182 0645681	Lights, Not Required, Rear Work, Deck Lights At Rear	0
183 0709438	Lights, Walk Surf, FRP Flood, LED	1
184 0802863	Pumper, Medium, Aluminum, 2nd Gen, Saber	1
185 0632361	No Additional Florida Discount - w/Saber FR Chassis	0
186 0554271	Body Skirt Height, 20"	1
187 0028245	Tank, Water, 750 Gallon, Poly, Med	1
188 0003405	Overflow, 4.00" Water Tank, Poly	1
189 0028104	Foam Cell Required	1
190 0633066	Sleeve, Through Tank	1
	Qty, Sleeve - 1	
	Water Tank Sleeve - Plumbing/Hydraulic Diameter - 3" Plumbing	
191 0553729	Not Required, Restraint, Water Tank, Heavy Duty	0
192 0003429	Not Required, Direct Tank Fill	0
193 0003424	Not Required, Dump Valve	0
194 0048710	Not Required, Jet Assist	0
195 0030007	Not Required, Dump Valve Chute	0
196 0514778	Not Required, Switch, Tank Dump Master	0
197 0689065	Hose Bed, Aluminum, Saber/Commercial	1
	Finish, Inside of Hose Bed - Painted	
	Finish, Inside of Cargo Area - Painted	
198 0723549	Painted Hose Bed	1
	Paint Color, Hose Bed Interior - Match Lower Body	
199 0627877	Hose Bed Capacity, 1000' of 5.00", 1000' of 3.00"	1
200 0059656	Divider, Hose Bed, .25" Unpainted, PMFD	2
	Qty, Hosebed Dividers - 2	
201 0589278	Hose Restraint, Hose Bed, Velcro Strap on Top, 2" Heavy Nylon Web at Rear	1
	Type of fastener - seat belt buckle	
	Nylon Web Color - Black	
	Type of fastener, Rear - seat belt buckle - bottom of hosebed	
202 0010133	Cross-Divider, Hose Bed	1
203 0013512	Running Boards, 12.75" Deep	1
204 0689621	Tailboard, 16" Deep	1
205 0690037	Wall, Rear, Smooth Aluminum/Body Material	1
	Material, Rear Wall Inboard Facing Surfaces - Aluminum Diamondplate	
206 0889214	Tow Eyes, w/Tow Bar, 2G Pumper	1
207 0895820	Construction, Compt, Alum, 2G Pumper	1
208 0023650	LS 152" Rollup, Full Height Front & Rear, FDLER	1
209 0063658	RS 152" Rollup, Full Height Front & Rear, FDLER	1
210 0692733	Doors, Rollup, Gortite, Side Compartments	6
	Qty, Door Accessory - 06	
	Color, Roll-up Door, Gortite - Painted to Match Lower Body	
	Latch, Roll-up Door, Gortite - Non-Locking Liftbar	
211 0083700	Compt, Rear, Rollup, 37.75" FF, 25.88" D	1
212 0692746	Door, Gortite, Rollup, Rear Compartment	1
	Color, Roll-up Door, Gortite - Painted to Match Lower Body	
	Latch, Roll-up Door, Gortite - Non-Locking Liftbar	
213 0554995	No Body Modification Required	0
214 0616670	Lights, Compt, Pierce LED, Dual Light Strips, Each Side of Door, Pumper/Tanker	7
	Qty, - 07	
	Location, Compartment Lights - All Body Compts	
215 0687146	Shelf Tracks, Painted	7
	Qty, Shelf Track - 07	
	Location, Shelf Track - LS1, LS2, LS3, RS1, RS2, RS3 and B1	
216 0600350	Shelves, Adj, 500 lb Capacity, Full Width/Depth, Predefined Locations	5
	Qty, Shelf - 05	
	Material Finish, Shelf - Painted - Matter Gray	
	Location, Shelves/Trays, Predefined - RS3-Upper Third, RS1-Upper	

217	0617248	Third, B1-Centered, LS3-Upper Third and LS1-Upper Third Tray, Floor Mounted, Slide-Out, 500lb, 2.00" Sides, 3 Slides, 2G Qty, - 02 Material - paint to match compt interior Location, Tray Slide-Out, Floor Mounted - LS1 and B1	2
218	0024016	Rub Rail, Aluminum Extruded, Side & Rear of Body	1
219	0784811	Fender Crowns, Rear, Stainless, w/Removable Liner Material Finish, Fender Liner - Painted Lower Body	1
220	0519849	Not Required, Hose, Hard Suction	0
221	0626229	Handrails, Side Pump Panels, Per Print	1
222	0004126	Handrails, Beavertail, Standard	1
223	0004146	Handrail, Rear, Below Hose Bed, Full Width	1
224	0657522	Compt, Air Bottle, Triple, Fender Panel Qty, Air Bottle Comp - 2 Door Finish, Fender Compt - Polished Location, Fender Compt - Triple - RS Fwd and Triple - RS Rear Latch, Air Bottle Compt - Flush Lift & Turn Insert, Air Bottle Compt - Rubber Matting	2
225	0648325	Compt, Air Bottle, Double, Tri Door, Fender Panel Qty, Air Bottle Comp - 2 Door Finish, Fender Compt - Polished Location, Fender Compt - Double - LS Fwd - DEF Combo and Double - LS Rear - Fuel Combo Latch, Air Bottle Compt - Flush Lift & Turn Insert, Air Bottle Compt - Rubber Matting	2
226	0004225	Ladder, 24' Duo-Safety 900A 2-Section	1
227	0635956	Ladder, 14' Duo-Safety 775-DR Roof Qty, - 01	1
228	0598395	Ladders/Backboard Btwn Tank & S.Sht, RS, Ext'd Rr, Encl'd Complete, RPH Size, Backboard - 72" X 18" X 2.5" Door, Material & Finish, Ladder Storage - aluminum treadplate Latch, Door Ladder Storage - D-Handle latch	1
229	0014245	Ladder, 10' Duo-Safety Folding 585A, w/Mounting Location, Folding Ladder - Ladder Compartment	1
230	0602877	Pike Pole, Pumper, Provided by Fire Department, NFPA 2016 Pike Pole Make/Model - Akron 10' Pike Pole	0
231	0602875	Pike Pole, 6', Pumper, Provided by Fire Department, NFPA 2016 Pike Pole Make/Model - Akron 6' Pike Pole	0
232	0004361	Tubes, Alum, Pike Pole Storage Qty, Pike Pole Tubes - 02 Location, Pike Pole Tube - Ladder Storage	2
233	0593072	Steps, Folding, Front of Body, One Each Side, w/LED, Trident Coating, Step - black	1
234	0592994	Steps, Folding, Rear of Body, w/LED, Trident Coating, Step - black	1
235	0724153	Step, Folding - Extra, Body Only, w/LED, Trident Qty, Folding Step - 02 Location, Additional Step - LS front bulkhead above existing step Coating, Step - black	2
236	0007575	Pump House, Side Control, 48", Control Zone	1
237	0037731	Pump House Structure, Raised, Included with Ladder Storage	1
238	0004425	Pump, Waterous, CSU, 1500 GPM, Single Stage	1
239	0004481	Seal, Grafoil, Waterous	1
240	0559769	Trans, Pump, Waterous C20 Series	1
241	0635600	Pumping Mode, Stationary Only	1
242	0605126	Pump Shift, Air Mnl Override, Split Shaft, Interlocked, Waterous	1
243	0003148	Transmission Lock-up, EVS	1
244	0004547	Auxiliary Cooling System	1
245	0014486	Not Required, Transfer Valve, Single Stage Pump	0
246	0746508	Valve(s), Relief Intake, Trident Air Max, Control Location Qty - 1 Pressure Setting - 125 psig Intake Relief Valve Control - Right Side Pump Panel	1

247	0794959	Controller, Pressure, Pierce, Pump Boss, PBA300	1
248	0072153	Primer, Trident, Air Prime, Air Operated	1
249	0780364	Manuals, Pump, (2) Total, Electronic Copies	1
250	0602512	Plumbing, Stainless Steel and Hose, Single Stage Pump, Control Zone	1
251	0795135	Plumbing, Stainless Steel, w/Foam System	1
252	0004645	Inlets, 6.00" - 1250 GPM or Larger Pump	1
253	0014650	Pump Suction Tube(s), Short, All	1
254	0730362	Valve, Ball Intake, TFT, AXD/AXE Series	1
		Location - Driver's side	
		Qty - 1	
		Connection, Inlet, Side B - 1ST (5.0" Rigid Storz) with a cap	
		Connection, Outlet, Side A - NX (6.0" Threaded Swivel)	
		Ball Intake Valve - AXD (Left)	
		Ball Intake Valve Actuation - T (Top Crank)	
		Relief Valve, Ball Intake - Standard	
255	0004646	Cap, Main Pump Inlet, Long Handle, NST, VLH	1
256	0084610	Valves, Akron 8000 series- All	1
257	0016158	Valve, Inlet(s) Recessed, Side Cntrl, "Control Zone"	2
		Qty, Inlets - 2	
258	0004700	Control, Inlet, at Valve	1
259	0004660	Inlet (1), Left Side, 2.50"	1
260	0004680	Inlet, Right Side, 2.50"	1
261	0092569	No Rear Inlet (Large Dia) Requested	0
262	0064116	No Rear Inlet Actuation Required	0
263	0092696	Not Required, Cap, Rear Inlet	0
264	0009648	No Rear Intake Relief Valve Required on Rear Inlet	0
265	0586174	Provision, Front Inlet	1
266	0092568	No Rear Auxiliary Inlet Requested	0
267	0723049	Valve, .75" Bleeder, Aux. Side Inlet, "T" Swing Handle	1
268	0029043	Tank to Pump, (1) 3.00" Valve, 3.00" Plumbing	1
269	0004905	Outlet, Tank Fill, 1.50"	1
270	0062133	Control, Outlets, Manual, Pierce HW if applicable	1
271	0004940	Outlet, Left Side, 2.50"	2
		Qty, Discharges - 02	
272	0005091	Elbow, Left Side Outlets, 45 Degree, 2.50" FNST x 2.50" MNST, VLH	1
273	0092570	Not Required, Outlets, Left Side Additional	0
274	0035094	Not Required, Elbow, Left Side Outlets, Additional	0
275	0004945	Outlet, Right Side, 2.50"	1
		Qty, Discharges - 01	
276	0025091	Elbow, Right Side Outlets, 45 Degree, 2.50" FNST x 2.50" MNST, VLH	1
277	0092571	Not Required, Outlets, Right Side Additional	0
278	0089584	Not Required, Elbow, Right Side Outlets, Additional	0
279	0005047	Outlet, 4" w/4" Right, Handwheel	1
		Valve, Brand - Akron	
280	0005097	Elbow, Large Dia Outlet, 30 Deg, 4.00" FNST x 5.00" Storz	1
		Qty, - 01	
281	0649939	Outlet, Front, 1.50" w/2" Plumbing	1
		Fitting, Outlet - 1.50" NST with 90 degree swivel	
		Drain, Front Outlet - Automatic	
		Location, Front, Single - top of left bumper	
282	0004995	Outlet, Rear, 2.50"	1
		Qty, Discharges - 01	
		Location, Outlet - b) left side	
283	0045091	Elbow, Rear Outlets, 45 Degree, 2.50" FNST x 2.50" MNST, VLH	1
284	0092574	Not Required, Outlet, Rear, Additional	0
285	0085695	Not Required, Elbow, Rear Outlets, Large, Additional	0
286	0092573	Not Required, Outlet, Hose Bed/Running Board Tray	0
287	0752096	Caps/Plugs for 1.00" to 3.00" Discharges/Inlets, Vinyl Covered Cable	1
288	0723042	Valve, 0.75" Bleeder, Discharges, "T" Swing Handle	1
289	0005065	Outlet, 3.00" Deluge Riser	1
290	0770359	No Monitor Requested, Customer/Dealer Furnished and Installed	0
		Fill in Blank - TBD	
291	0029304	No Nozzle Req'd	0
292	0005070	Deluge Mount, NPT	1

293	0723726	Speedlay Module Not Required	0
294	0722432	Hose Restraint Not Required, No Speedlay Module	0
295	0723395	Speedlays, Not Required	0
296	0723394	Speedlays, Not Required	0
297	0029167	Crosslays Sngl Sheet Unpainted, (2+) 1.50", Std. Cap Qty, Crosslays - 2	2
298	0090442	Crosslays Sngl Sheet Unpainted, (1) 2.50" Std Cap	1
299	0591145	Hose Restraint, Crosslay/Deadlay, Top/Ends, Elastic Netting Qty, - 03	3
300	0029260	Not Required, Speedlays	0
301	0750536	Hose Restr, Spdly, Not Required, No Spdly	0
302	0019853	Crosslays, 8.00" Lower Than Standard - Control Zone w/9.00" Raised PH	1
303	0005215	Reel, Booster, Over Pump, Left Side, Steel Finish, Reel - Painted Job Color Matching Lower Body	1
304	0011060	Switch, Reel Rewind - One at Pump Panel	1
305	0005300	Hose, Booster - 150' of 1.00"/800 PSI	1
306	0005244	Capacity, Hose Reel 200' of 1"	1
307	0007074	Nozzle, Elkhart S-200 1.00"	1
308	0624939	Foam Sys, Husky 3, Single Agent, Multi Select Feature Discharge, Foam Locations - Front Bumper Center, Rear Outlet Left Side, Crosslay Front and Crosslay Rear	1
309	0012126	Not Required, CAF Compressor	0
310	0592527	Refill, Foam Tank, Integral, Husky 3	1
311	0031896	Demonstration, Foam System, Dealer Provided	1
312	0041377	Foam Cell, 25 Gallon, Reduce Water Type of Foam - Class "A"	1
313	0697589	Drain, 1.00", Foam Tank #1, Husky 3 Foam System, Quarter Turn	1
314	0091079	Not Required, Foam Tank #2	0
315	0091112	Not Required, Foam Tank #2 Drain	0
316	0738072	Approval Dwg, Pump Panel(s), Not Required	0
317	0032479	Pump Panel Configuration, Control Zone	1
318	0629252	Material, Pump Panels, Side Control Black Vinyl Material Finish, Pump Panel, Side Control - Black Vinyl Material, Pump Panel, Side Control - Aluminum	1
319	0721765	Panel, Pump Access - Right Side Only, Side Control Latch, Pump Panel Access, Side Mount - Swell Latch, Black	1
320	0583824	Light, Pump Compt, WIn 3SC0CDCR LED White Qty, - 01	1
321	0586382	Gauges, Engine, Included With Pressure Controller	1
322	0005601	Throttle, Engine, Incl'd w/Press Controller	1
323	0739224	Indicator Light @ Pump Panel, Throttle Ready, Incl w/Pressure Gov/Throttle, Green	1
324	0549333	Indicators, Engine, Included with Pressure Controller	1
325	0745568	Indicator Light, Pump Panel, Ok To Pump, Green	1
326	0511078	Gauges, 4.00" Master, Class 1, 30"-0-600psi	1
327	0511100	Gauge, 2.00" Pressure, Class 1, 30"-0-400psi	1
328	0062586	Gauge, Water Level, Class 1, Pierce Std	1
329	0062992	Gauge, Foam Level, (1) Tank, Class 1, GAAAR 5lt	1
330	0593161	Light Shield, S/S LED	1
331	0606694	Air Horns, (2) Hadley, 6" Round, eTone, In Bumper	1
332	0606835	Location, Air Horns, Bumper, Each Side, Outside Frame, Outboard (Pos #1 & #7)	1
333	0757092	Control, Air Horn, Multi Select	1
334	0757084	Control, Air Horn, Horn Ring	1
335	0006133	Siren, Code 3 3692 100W or 200W	1
336	0510206	Location, Elect Siren, Recessed Overhead In Console Location, Elec Siren - Overhead, DS Inside Sw Pnl	1
337	0006145	Control, Elec Siren, Horn Ring, PS Foot Sw	1
338	0601375	Speaker, (1) Code 3, PB100C, Chrome Connection, Speaker - siren head	1
339	0601556	Location, Speaker, Frt Bumper, Recessed, Left Side, Outside Frame, Inbrd (Pos 6)	1
340	0895310	Siren, Federal Q2B Finish, Q2B Siren - Chrome	1
341	0006097	Location of Siren, Recessed in Bumper Location, Siren, Mech - b) rig	1
342	0748305	Control, Mech Siren, Multi Select	1

343	0748282	Control Mech Siren, Ft Sw LS	1
344	0740391	Sw, Siren Brake, Momentary Chrome Push Button, RS	1
345	0746353	Not Required, Warning Lights Intensity	0
346	0606721	Lightbar, Wln, Freedom IV-V, 60", R_RR__RR__RR_R Filter, Whl Freedom Ltbrs - No Filters	1
347	0016380	No Additional Lights Req'd, Side Zone Upper	0
348	0540384	Lights, Front Zone, Wln M6*C LED, Clear Lens, in Common Bzl Color, Lt DS Front - Red Color, Lt PS Front - Red	1
349	0540679	Lights, Side Zone Lower, Wln M6*C LED, Clear Lens 2pr Location, Lights Front Side - b)each side bumper Color, Lt Side Front - Red Color, Lt Side Rear - Red Location, Lights Rear Side - Over Rear Wheels	1
350	0540783	Lights, Rear Zn Lwr, Wln M6*C LED Color, Lt DS Rear - r) DS Rear Lt Red Color, Lt PS Rear - r) PS Rear Lt Red	1
351	0088745	Light, Rear Zone Up, Wln L31HRFN LED Beacon, Red LED Color, Dome, Rear Warning - j) both domes clear	1
352	0006551	Not Required, Lights, Rear Upper Zone Blocking	0
353	0006615	Mtg, Rear Warn Lts, On Top of Compt	1
354	0779722	Receptacle, 15/20A 120V 3-Pr 3-Wr, NEMA 5-20R SB Dup, 1st, Interior Body Qty, - 01 Location 1 - LS1 AC Power Source - Shoreline Cover, Receptacle - Interior SS Wall Plate(s)	1
355	0519934	Not Required, Brand, Hydraulic Tool System	0
356	0649753	Not Required, PTO Driven Hydraulic Tool System	0
357	0007150	Bag of Nuts and Bolts Qty, Bag Nuts and Bolts - 1	1
358	0602516	NFPA Required Loose Equipment, Pumper, NFPA 2016, Provided by Fire Department	0
359	0602407	Soft Suction Hose, Provided by Fire Department, Pumper NFPA 2016 Classification	0
360	0027023	No Strainer Required	0
361	0602538	Extinguisher, Dry Chemical, Pumper NFPA 2016 Class, Provided by Fire Department	0
362	0602360	Extinguisher, 2.5 Gal. Pressurized Water, Pumper NFPA 2016, Provided by Fire Dept	0
363	0602679	Axe, Flathead, Pumper NFPA 2016 Classification, Provided by Fire Department	0
364	0602667	Axe, Pickhead, Pumper NFPA 2016 Classification, Provided by Fire Department	0
365	0607712	Paint Process / Environmental Requirements, PMFD	1
366	0568510	Paint, Two Tone w/Shield, 90 Red & Black, Saber PMFD Paint Color-Upper-PMFD - #101 black	1
367	0646897	Paint Chassis Frame Assy, E-Coat, Standard Paint Color, Frame Assembly, Predefined - Standard Black	1
368	0693797	No Paint Required, Aluminum Front Wheels	0
369	0687653	Paint, Rear Wheels, Single Axle, Alum-Stl Paint, Wheels - Black #101	1
370	0733739	Paint, Axle Hubs Paint, Axle Hub - Black #101	1
371	0007230	Compartment, Painted, Spatter Gray	1
372	0544129	Reflective Band, 1"-6"-1" Color, Reflect Band - A - a) white Color, Reflect Band - B - l) white Color, Reflect Band - C - w) white	1
373	0007356	Reflective across Cab Face	1
374	0536954	Stripe, Chevron, Rear, Diamond Grade, Pumper Color, Rear Chevron DG - fluorescent yellow green	1
375	0087342	Jog, "Z"-Shaped, In Reflective Stripe Qty, - 1	1
376	0017359	Stripe, Black Outline, Vinyl on Reflective Band Qty, - 01	1
377	0593225	Stripe, Reflective, Cab Doors Interior, D 25 nd Grade Color, Reflect Band - A - p) fluorescent yellow green diamond grade	1

378	0679788	Stripe, Vinyl, Cab Sides, IPO Chrome Molding	1
379	0027372	Lettering Specifications, (GOLD STAR Process)	1
380	0686428	Lettering, Gold Leaf, 3.00", (41-60)	1
		Outline, Lettering - Outline and Shade	
381	0031972	Manuals, Two (2), Fire Apparatus Parts, Custom Chassis	1
382	0543577	Manuals, (1) Chassis Service & (1) CD, Custom	1
383	0531638	Manual, Two (2) CD, Chassis Operation, Custom	1
384	0030008	Warranty, Basic, 1 Year, Apparatus, WA0008	1
385	0696698	Warranty, Engine, Cummins, 5 Year, WA0181	1
386	0684953	Warranty, Steering Gear, Sheppard M110, 3 Year WA0201	1
387	0596017	Warranty, Frame, 50 Year, Custom Chassis, WA0013	1
388	0595698	Warranty, Axle, 3 Year, TAK-4, WA0050	1
389	0610485	Warranty, Axle, Eaton/Dana, 5 Year/100,000 Mile, Parts and Labor	1
390	0652758	Warranty, ABS Brake System, 3 Year, Meritor Wabco, WA0232	1
391	0019914	Warranty, Structure, 10 Year, Custom Cab, WA0012	1
392	0595813	Warranty, Paint, 10 Year, Cab, Pro-Rate, WA0055	1
393	0660535	Not Required, Warranty, Electrical System	0
394	0695416	Warranty, Pierce Camera System, WA0188	1
395	0647720	Warranty, Pierce LED Strip Lights, WA0203	1
396	0046369	Warranty, 5-year EVS Transmission, Standard Custom, WA0187	1
397	0685945	Warranty, Transmission Cooler, WA0216	1
398	0688798	Warranty, Water Tank, Lifetime, UPF, Poly Tank, WA0195	1
399	0596025	Warranty, Structure, 10 Year, Body, WA0009	1
400	0693127	Warranty, Gortite, Roll-up Door, 6 Year, WA0190	1
401	0734463	Warranty, Pump, Waterous, 7 Year Parts, WA0382	1
402	0648675	Warranty, 10 Year S/S Pumbing, WA0035	1
403	0657990	Warranty, Foam System, Husky 3, WA0231	1
404	0595820	Warranty, Paint, 10 Year, Body, Pro-Rate, WA0057	1
405	0595421	Warranty, Goldstar, 3 Year, Apparatus, WA0018	1
406	0683627	Certification, Vehicle Stability, CD0156	1
407	0807826	Certification, Engine Installation, Saber FR/Enf, Cummins L9, 2024	1
408	0686786	Certification, Power Steering, CD0098	1
409	0892691	Certification, Cab Integrity, Saber FR/Enforcer, CD0189	1
410	0631973	Certification, Cab Door Durability, Saber FR/Enforcer, CD0137	1
411	0631978	Certification, Windshield Wiper Durability, Saber FR/Enforcer, CD0132	1
412	0556828	Certification, Electric Window, Not Available	0
413	0631977	Certification, Seat Belt Anchors and Mounting, Saber FR/Enforcer, CD0134	1
414	0735949	Certification, Cab HVAC System Performance, SFR/Enf, CD0165/CD0167/CD0174/CD0175	1
415	0545073	Amp Draw Report, NFPA Current Edition	1
416	0002758	Amp Draw, NFPA/ULC Radio Allowance	1
417	0799248	Appleton/Florida BTO	1
418	0000017	FLORIDA DIVISION BODY	1
419	0000012	PIERCE CHASSIS	1
420	0004713	ENGINE, OTHER	1
421	0046395	EVS 3000 Series TRANSMISSION	1
422	0020011	WATEROUS PUMP	1
423	0020009	POLY TANK	1
424	0028048	FOAM SYSTEM	1
425	0020006	SIDE CONTROL	1
426	0020007	AKRON VALVES	1
427	0020015	ABS SYSTEM	1
428	0755450	PIERCE MFG BODY	1



IN SERVICE TO SERVE YOU

Equipment Proposal

Proposal # 51623

This Equipment Proposal (the "Proposal") has been prepared by Ten-8 Fire & Safety, LLC ("Company") in response to the undersigned Customer's request for a proposal. This Proposal is comprised of the special terms set forth below, the Proposal Option List, Warranty, and Company's Purchasing Terms and Conditions. Through its signature below or other Acceptance (as defined below), Customer acknowledges having received, read and being bound by this Proposal, all attachments and Company's Purchasing Terms and Conditions.

Date: **May 16, 2023** ("Proposal Date")

Customer: **Dawson County Government** ("Customer")

Customer Address: **25 Justice Way, Dawsonville, Ga. 30534**

Qty	Product Description & Options	Price
2	Pierce Saber Pumper per customer specifications \$725,625.00 each	\$1,451,250.00
	Prepay discount (\$14,242.00) each*	(\$28,484.00)
	Sourcewell Consortium discount (\$4,905.00) each	(\$9,810.00)
*Prepay discount based on 50% of total due at order placement and balance at delivery		
**Commercial chassis price is an estimate; final price is net price charged by the chassis manufacturer.		Total: \$1,412,956.00

Delivery Timing: The Product described above in the Product Description and Options Section of this document will be built by and shipped from the manufacturer approximately **17-20** (months) after Company receives Customer's acceptance of this Proposal as defined below, subject to market and production conditions, Force Majeure, delays from the chassis manufacturer, changes to Order Specifications, or any other circumstances or cause beyond Company's or manufacturer's control.

Other: Performance bond is included with prepay discount

Unless accepted within **30** days from date of proposal, the right is reserved to withdraw this proposal.

ACCEPTANCE OF THIS PROPOSAL CREATES AN ENFORCEABLE BINDING AGREEMENT BETWEEN COMPANY AND CUSTOMER. "ACCEPTANCE" MEANS THAT CUSTOMER DELIVERS TO COMPANY: (A) A PROPOSAL SIGNED BY AN AUTHORIZED REPRESENTATIVE, OR (B) A PURCHASE ORDER INCORPORATING THIS PROPOSAL, WHICH IS DULY APPROVED, TO THE EXTENT APPLICABLE, BY CUSTOMER'S GOVERNING BOARD. ACCEPTANCE OF THIS PROPOSAL IS EXPRESSLY LIMITED TO THE TERMS CONTAINED IN THIS PROPOSAL AND COMPANY'S PURCHASING TERMS AND CONDITIONS. ANY ADDITIONAL OR DIFFERENT TERMS, WHETHER CONTAINED IN CUSTOMER'S FORMS OR OTHERWISE PRESENTED BY CUSTOMER AT ANY TIME, ARE HEREBY REJECTED.

INTENDING TO CREATE A BINDING AGREEMENT, Customer and Company have each caused this Proposal to be executed by their duly authorized representatives as of date of the last signature below.

Customer: **Dawson County, Ga.**

Ten-8 Fire & Safety, LLC

By: _____

By:

Title: _____

Title: **Authorized Sales Representative**

Print: _____

Print: **Guy R. Binion**

Date: _____

Date: **5-16-23**

EXHIBIT A
PROPOSAL OPTION LIST

EXHIBIT B
WARRANTY

EXHIBIT C

PURCHASING TERMS AND CONDITIONS

PURCHASING TERMS AND CONDITIONS

These Purchasing Terms and Conditions, together with the Equipment Proposal and all attachments (collectively, the "Agreement") are entered into by and between Ten-8 Fire & Safety, LLC, a Florida company ("Company") and Customer (as defined in Ten-8 Fire & Safety LLC's Equipment Proposal document) and is effective as of the date specified in Section 3 of these Purchasing Terms and Conditions. Both Company and Customer may be referred throughout this document individually as a "party" or collectively as the "parties."

1. Definitions.
 - a. **"Acceptance"** has the same meaning set forth in Company's Equipment Proposal.
 - b. **"Company's Equipment Proposal"** means the Equipment Proposal provided by Company and prepared in response to Customer's request for proposal for a fire apparatus, associated equipment or an ambulance.
 - c. **"Cooperative Purchasing Contract"** means an Agreement between Company and a public authority, including without limitation, a department, division, agency of a municipal, county or state government ("Public Authority"), that adopts or participates in an existing agreement between Company and another non-party customer (including, but not limited to such non-party customer's equipment proposal, its applicable exhibits, attachments and purchasing terms and conditions), often referred to as a "piggyback arrangement," which is expressly agreed to, in writing, by Company. Company has sole discretion to determine whether it will agree to such a Cooperative Purchasing Contract.
 - d. **"Delivery"** means when Company delivers physical possession of the Product to Customer.
 - e. **"Manufacturer"** means the Manufacturer of any Product.
 - f. **"Prepayment Discount"** means the prepayment discounts, if any, specified in Company's Equipment Proposal.
 - g. **"Product"** means the fire apparatus and any associated equipment, or ambulance manufactured or furnished for Customer by Company pursuant to the Specifications.
 - h. **"Purchase Price"** means the Total price set forth in the Quotation, adjusted for the final net price for the chassis charged by the original equipment manufacturer set forth in the final invoice submitted to the Company by the manufacturer.
 - i. **"Purchasing Terms and Conditions"** means these Purchasing Terms and Conditions; however, if the Company's Equipment Proposal or the Customer's related Purchase Order states that it is governed by a Cooperative Purchasing Agreement, "Purchasing Terms and Conditions" shall mean those terms and conditions set forth in the applicable Cooperative Purchasing Agreement.
 - j. **"Specifications"** means the general specifications, technical specifications, training, and testing requirements for the Product contained in Company's Equipment Proposal and its Exhibit A (Proposal Option List or for ambulance sales, the Quotation, or Order Form, as applicable), prepared in response to Customer's request for such a proposal.
2. Purpose. This Agreement sets forth the terms and conditions of Company's sale of the Product to Customer.
3. Term of Agreement. This Agreement will become effective on the date of Acceptance as defined in Company's Equipment Proposal ("Effective Date") and, unless earlier terminated pursuant to the terms of this Agreement, it will terminate upon Delivery and payment in full of the Purchase Price.
4. Purchase and Payment. Customer agrees to pay Company the Purchase Price for the Product(s). The Purchase Price is in U.S. dollars. Where Customer opts for a Prepayment Discount that specifies that Customer will tender one or more prepayments to Company, Customer must provide each prepayment within the time frame specified in the Equipment Proposal in order to receive the Prepayment Discount for that prepayment installment. To the extent permitted by applicable law, Company may in its sole discretion charge a convenience fee if Customer elects to pay the Purchase Price by means of a credit card.
5. Representations and Warranties. Customer hereby represents and warrants to Company that the purchase of the Product(s) has been approved by Customer in accordance with applicable general laws and, as applicable, Customer's charter, ordinances and other governing documents, and funding for the purchase has been duly budgeted and appropriated.

6. Cancellation/Termination.

- a. Fire Equipment and Apparatus Sales. In the event this Agreement is cancelled or terminated by Customer before completion, Company may charge Customer a cancellation fee. The following charge schedule is based on costs incurred by Manufacturer and Company for the Product, which may be applied and charged to Customer: (a) 12% of the Purchase Price after the order for the Product(s) is accepted and entered into Manufacturer's system by Company; (b) 22% of the Purchase Price after completion of approval drawings by Customer, and; (c) 32% of the Purchase Price upon any material requisition made by the Manufacturer for the Product. The cancellation fee will increase in excess of (c) in this Section 6, accordingly, as additional costs are incurred by Manufacturer and Company as the order progresses through engineering and into the manufacturing process.
- b. Ambulance Sales. This Section 6 for Cancellation/Termination does not apply to Ambulance Sales. An order for an ambulance cannot be cancelled or terminated once Company receives and processes Customer's Acceptance of Company's Equipment Proposal.

7. Delivery. The Product is scheduled to be delivered as specified in the Delivery Timing section of the Equipment Proposal ("Delivery Timing"), which will be F.O.B. Company's facility. The Delivery Timing is an estimate, and Company is not bound to such date unless it otherwise agrees in writing. Company is not responsible for Delivery delays caused by or as the result of actions, omissions or conduct of the Manufacturer, its employees, affiliates, suppliers, contractors, and carriers. All right, title and interest in and to the Product, and risk of loss, shall pass to Customer upon Delivery of the Product(s) to Customer.

8. Standard Warranty. The manufacturer warranties applicable to this Agreement, if any, are attached to Company's Equipment Proposal as Exhibit A and are incorporated herein as part of the Agreement.

a. Disclaimer. EXCEPT AS OTHERWISE SET FORTH IN THIS AGREEMENT, COMPANY, INCLUDING ITS PARENT COMPANY, AFFILIATES, SUBSIDIARIES, AND THEIR RESPECTIVE OFFICERS, DIRECTORS, EMPLOYEES, SHAREHOLDERS, AGENTS OR REPRESENTATIVES DO NOT MAKE ANY REPRESENTATIONS OR WARRANTIES, EXPRESS OR IMPLIED, WITH RESPECT TO THE PRODUCTS PROVIDED UNDER THIS AGREEMENT, WHETHER ORAL OR WRITTEN, EXPRESS, IMPLIED OR STATUTORY. WITHOUT LIMITING THE FOREGOING DISCLAIMER, ANY IMPLIED WARRANTY OR CONDITION OF MERCHANTABILITY, IMPLIED WARRANTY AGAINST INFRINGEMENT, AND IMPLIED WARRANTY OR CONDITION OF FITNESS FOR A PARTICULAR PURPOSE ARE EXPRESSLY EXCLUDED AND DISCLAIMED. STATEMENTS MADE BY SALES REPRESENTATIVES OR IN PROMOTIONAL MATERIALS DO NOT CONSTITUTE WARRANTIES.

9. Limitation of Liability. COMPANY WILL NOT BE LIABLE FOR ANY INCIDENTAL, CONSEQUENTIAL, INDIRECT, ECONOMIC, PUNITIVE, SPECIAL OR EXEMPLARY DAMAGES ARISING FROM OR IN ANY WAY CONNECTED WITH THIS AGREEMENT WITHOUT REGARD TO THE NATURE OF THE CLAIM OR THE UNDERLYING THEORY OR CAUSE OF ACTION (WHETHER IN CONTRACT, TORT, STRICT LIABILITY, EQUITY OR ANY OTHER THEORY OF LAW) ON WHICH SUCH DAMAGES ARE BASED. COMPANY'S LIMIT OF LIABILITY UNDER THIS AGREEMENT SHALL BE CAPPED AT THE TOTAL AMOUNT OF THE MONIES PAID BY CUSTOMER TO COMPANY UNDER THIS AGREEMENT.

10. Force Majeure. Company shall not be responsible nor deemed to be in default on account of delays in performance due to causes which are beyond Company's control or which make Company's performance impracticable, including but not limited to wars, insurrections, strikes, riots, fires, storms, floods, other acts of nature, explosions, earthquakes, accidents, transportation or delivery delays or losses outside of Company's control, any act of government, inability or delay of Company or manufacture in obtaining necessary labor or adequate or suitable manufacturing components at reasonable prices, allocation regulations or orders affecting materials, equipment, facilities or completed products, failure to obtain any required license or certificates, acts of God or the public enemy, terrorism, epidemics, quarantine restrictions, failure of vendors to perform their contracts or labor troubles of Company or a manufacturer causing cessation, slowdown, or interruption of work.

11. Customer's Obligations. Customer shall provide its timely and best efforts to cooperate with Company and Manufacturer during the manufacturing process to create the Product. Reasonable and timely cooperation includes, without limitation, Customer's providing timely information in response to a request from Manufacturer or Company and Customer's participation in traveling to Manufacturer's facility for inspections and approval of the Product.
12. Default. The occurrence of one or more of the following shall constitute a default under this Agreement: (a) Customer's failure to pay any amounts due under this Agreement or Customer's failure to perform any of its obligations under this Agreement; (b) Company's failure to perform any of its obligations under this Agreement; (c) either party becoming insolvent or becoming subject to bankruptcy or insolvency proceedings; (d) any representation made by either party to induce the other to enter into this Agreement, which is false in any material respect; (e) an action by Customer to dissolve, merge, consolidate or transfer a substantial portion of its property to another entity; or (f) a default or breach by Customer under any other contract or agreement with Company.
13. Manufacturer's Statement of Origin. Company shall retain possession of the manufacturer's statement of origin ("MSO") for the Product until the entire Purchase Price has been paid. If more than one Product is covered by this Agreement, Company shall retain the MSO for each individual Product until the Purchase Price for that Product has been paid in full.
14. Arbitration. Any controversy or claim arising out of or relating to this Agreement, or the breach thereof, shall be settled by arbitration administered by the American Arbitration Association in accordance with its Commercial Arbitration Rules, and judgment on the award rendered by the arbitrator(s) may be entered in any court having jurisdiction thereof. The Arbitration shall take place in Bradenton, Florida.
15. Miscellaneous. The relationship of the parties established under this Agreement is that of independent contractors and neither party is a partner, employee, agent, or joint venture of or with the other. Neither party may assign its rights and obligations under this Agreement without the prior written approval of the other party. This Agreement and all transactions between Ten-8 Fire & Safety, LLC will be governed by and construed in accordance with the laws of the State of Florida. The delivery of signatures to this Agreement may be via facsimile transmission or other electronic means and shall be binding as original signatures. This Agreement shall constitute the entire agreement and supersede any prior agreement between the parties concerning the subject matter of this Agreement. This Agreement may only be modified by an amendment, in writing, signed by duly authorized representatives of both parties with authority to sign such amendments to this Agreement. In the event of a conflict between the Ten-8 Proposal and these Terms and Conditions, the Ten-8 Proposal shall control except in the case of a Cooperative Purchasing Contract as set forth in Section 1(c) and (h) of these Purchasing Terms and Conditions. If any term of this Agreement is determined to be invalid or unenforceable by a competent legal authority, such term will be either reformed or deleted, as the case may be, but only to the extent necessary to comply with the applicable law, regulation, order or rule, and the remaining provisions of the Agreement will remain in full force and effect.



DAWSON COUNTY BOARD OF COMMISSIONERS AGENDA FORM

Department: Public Works

Work Session: 06/01/2023

Prepared By: Melissa Hawk

Voting Session: 06/15/2023

Presenter: Robert Drewry

Public Hearing: Yes No

Agenda Item Title: IFB # 419-23 - Full Depth Reclamation Project for Dawson County

Background Information:

Dawson County Public Works, Road Department, identified that Kelly Bridge Road, Goodson Road and War Hill Road are all in need of a full reclamation and repaving rehabilitation. SPLOST VI and SPLOST VII funds have been designated for road projects.

Current Information:

An IFB was let on April 12, 2023, for pricing to complete the full scope of work necessary to fully renovate the three roads discussed. Two bids were received, with Blount Construction being the most responsible and responsive low bidder, in the amount of \$3,930,066.54. The recommendation is to split the funding source from both SPLOST IV and SPLOST VII as follows:
 SPLOST VI: Kelly Bridge Road and War Hill Road
 SPLOST VII: Goodson Road

Budget Information: Applicable: Not Applicable: Budgeted: Yes No

Fund	Dept.	Acct No.	Budget	Balance	Requested	Remaining
324	4220	541401	\$2,700,000.00	\$2,700,000.00	\$2,461,188.38	\$238,811.62
Fund	Dept.	Acct No.	Budget	Balance	Requested	Remaining
325	4220	541401	\$1,500,000.00	\$1,500,000.00	\$1,468,878.16	\$31,121.84

Recommendation/Motion: Staff respectfully requests the Board to accept the offers submitted and to award a contract to Blount Construction, not to exceed the amount of \$3,930,066.54, utilizing SPLOST VI and SPLOST VII funds.

Department Head Authorization: Robert Drewry

Date: 05/22/2023

Finance Dept. Authorization: Vickie Neikirk

Date: 05/23/23

County Manager Authorization: Joey Leverette

Date: 5-23-23

County Attorney Authorization:

Date: _____

Comments/Attachments:

Presentation



The Edge of The World

Photo By: Michele DeBlois

IFB #419-23 FULL DEPTH RECLAMATION PROJECT FOR DAWSON COUNTY

WORK SESSION – JUNE 1, 2023

Background and Overview

- ❖ SPLOST VI and SPLOST VII Funds have been designated for county road projects.
- ❖ Three roads have been chosen for this project that are in need of full depth reclamation and repaving repairs.
- ❖ These roads are:
 - Kelly Bridge Road: Intersection of Cowart Road to the Cherokee County Line, approximately 12,00 feet
 - Goodson Road: Intersection of Dawson Forest Road to the Forsyth County Line, approximately 10,000 feet
 - War Hill Park Road: Intersection Liberty Church Road to Hwy 53 East, approximately 5,500 feet

Procurement Approach and Procedure

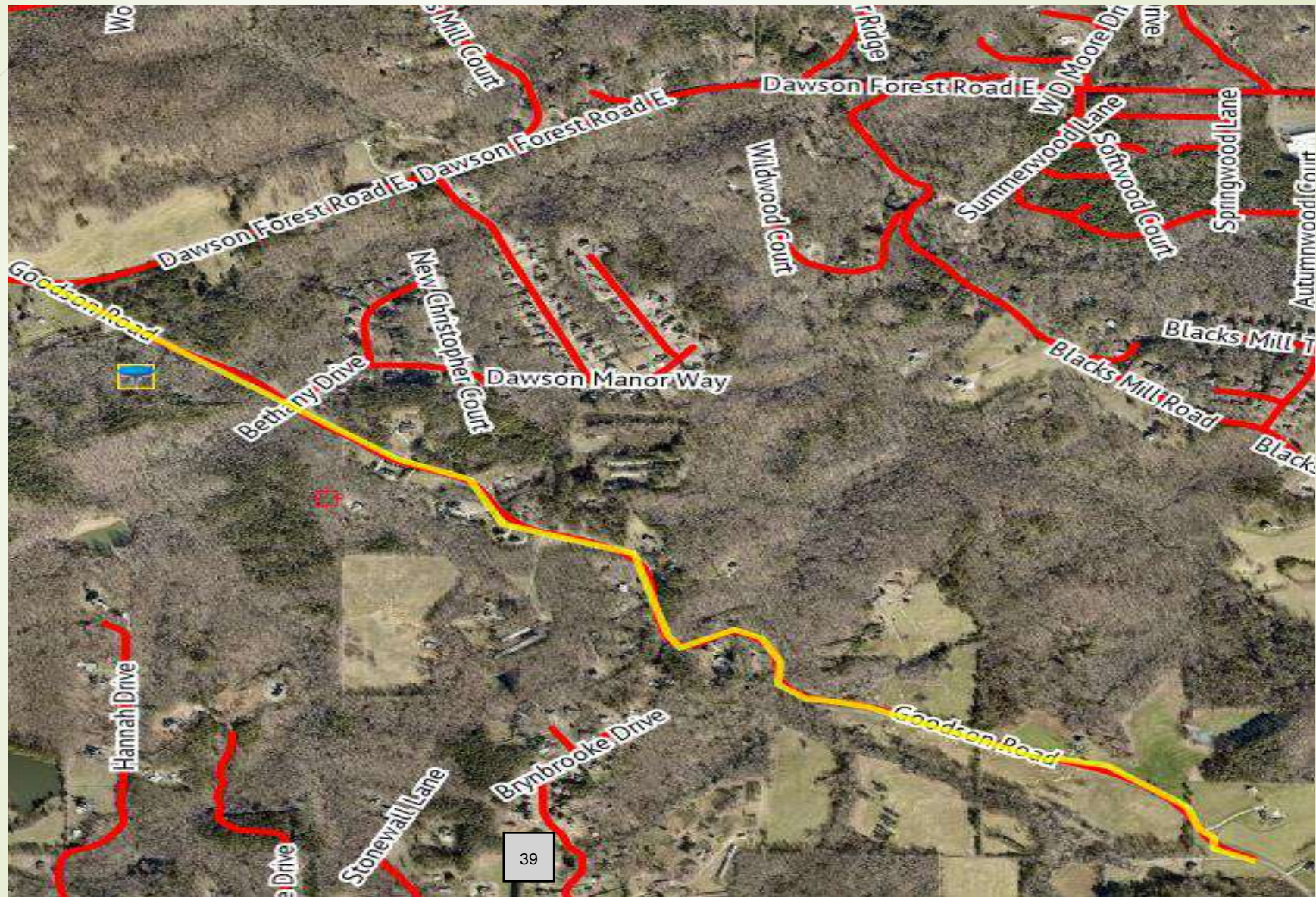
BID ACCORDING TO POLICY

- ✓ Advertised in Legal Organ
- ✓ Posted on County Website
- ✓ Posted on Georgia Procurement Registry
- ✓ Emailed notification through vendor registry
- ✓ Notification through County's Facebook and Twitter accounts
- ✓ Notification through Chamber of Commerce
- ❑ **2 bids received**

Map of Kelly Bridge Road



Map of Goodson Road



Map of War Hill Road



Offers Received

Blount Construction

Line Item	Description	Total Estimated Cost
TASK 1:	Kelly Bridge Road- Approx. 12,000 feet	
TASK 1 TOTAL:		\$1,641,897.18
Line Item	Description	Total Estimated Cost
TASK 2:	Goodson Road – Approx. 10,000 feet	
TASK 2 TOTAL:		\$1,468,878.16
Line Item	Description	Total Estimated Cost
TASK 3:	War Hill Park Road – Approx. 5500 feet	
TASK 3 TOTAL:		\$819,291.20
TOTAL ESTIMATED COSTS FOR ALL WORK:		\$3,930,066.54
START DATE:		Mix Design - July; FDR/Paving - Sept/Oct
DAYS TO COMPLETE PROJECT:		Nov. 30,2023 w/possible exception of shoulders due to weather
WARRANTY:		41 5 Years

C.W. Matthews Contracting

Unit Cost	Total Estimated Cost
TASK 1 TOTAL:	\$1,847,186.91
Unit Cost	Total Estimated Cost
TASK 2 TOTAL:	\$1,690,819.96
Unit Cost	Total Estimated Cost
TASK 3 TOTAL:	\$955,075.09
\$4,493,081.96	
August, 2023	
150 Days	
5 Years	

Staff Recommendation

Staff respectfully requests the Board to accept the bids submitted and to award a contract to Blount Construction, in the amount not to exceed \$3,930,066.54 utilizing SPLOST VI and SPLOST VII Funds.



DAWSON COUNTY BOARD OF COMMISSIONERS AGENDA FORM

Department: Public Works

Work Session: 06/01/2023

Prepared By: Melissa Hawk

Voting Session: 06/15/2023

Presenter: Robert Drewry

Public Hearing: Yes No

Agenda Item Title: Presentation of IFB #420-23 - Replacement of Culverts for Dawson County

Background Information:

The SPLOST VII resolution allotted funds to Public Works for road projects. There is a need to complete turn-key culvert replacement on six (6) structures. They are structures #339, #340 and #344 on Kelly Bridge Road; structures #973 and #974 on Goodson Road; and structure #785 on Indian Cove Road.

Current Information:

An IFB was released on April 14, 2023, for this work. The county received 1 bid from Townley Construction in the amount of \$735,455 for all structures, with the exception of the Indian Cove Road work. Townley Construction did not make an offer for this task. Townley did offer an unsolicited price for lining the existing pipes instead of replacing. After careful review, the Public Works staff wishes the Board to reject these offers.

Budget Information: Applicable: Not Applicable: Budgeted: Yes No

Fund	Dept.	Acct No.	Budget	Balance	Requested	Remaining
325	4220	541400		\$1,200,000.00	\$735,455.00	\$464,545.00

Recommendation/Motion: Staff respectfully requests the Board to accept the bid submitted as requested for all tasks within Task 1 and Task 2; to reject the unsolicited bids submitted for all tasks; to rebid Indian Cove Road; to award a contract to Townley Construction Company LLC, not to exceed the amount of \$735,455; and to utilize SPLOST VII funds for this project.

Department Head Authorization: Robert Drewry

Date: 05/22/2023

Finance Dept. Authorization: Vickie Neikirk

Date: 5/23/23

County Manager Authorization: Joey Leverette

Date: 5-23-23

County Attorney Authorization: _____

Date: _____

Comments/Attachments:

Presentation



The Edge of The World

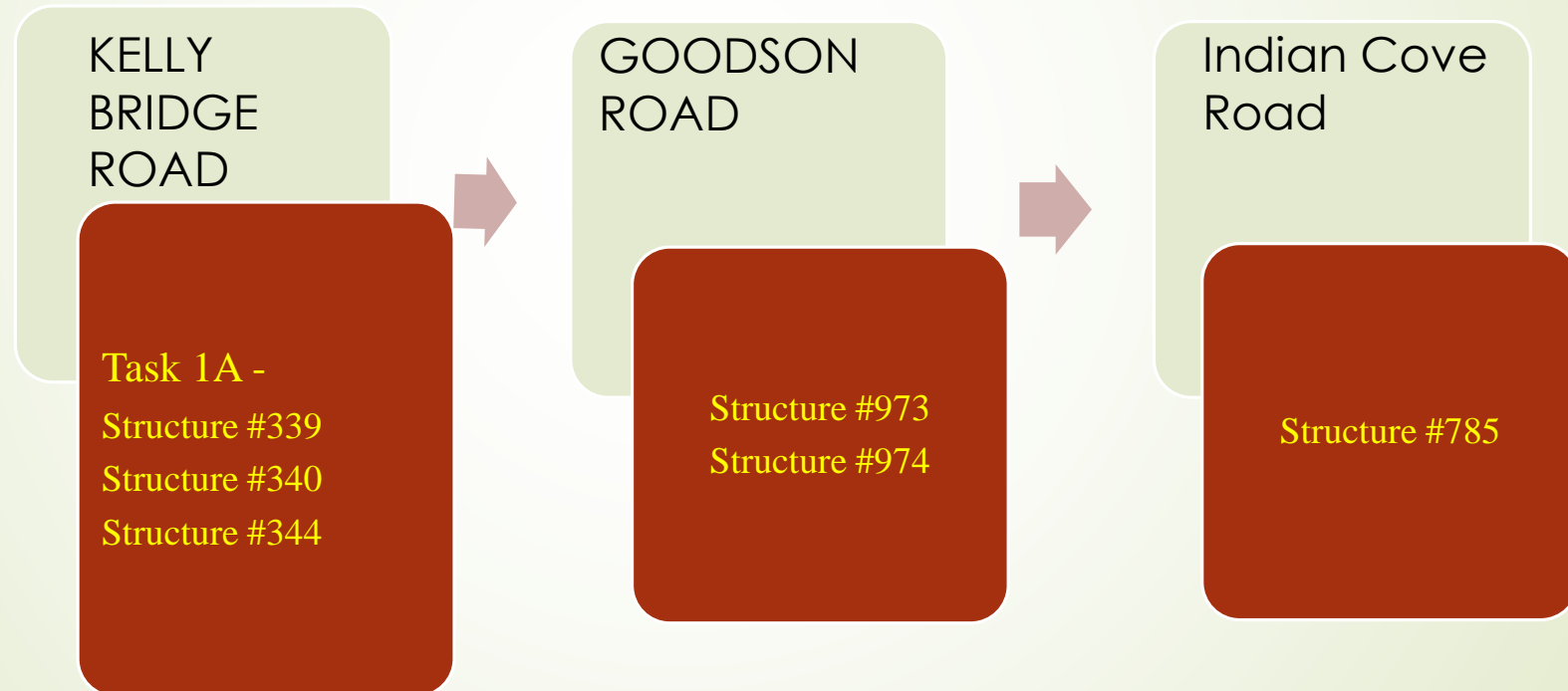
Photo By: Michele DeBlois

IFB #420-23 REPLACEMENT OF CULVERTS FOR DAWSON COUNTY

WORK SESSION – JUNE 1, 2023

Background and Overview

- ❖ SPLOST VII designated funds for county road projects.
- ❖ Six culvert sections, constructed from corrugated metal pipe, are in need of replacement.
- ❖ These sections are:



Procurement Approach and Procedure

BID ACCORDING TO POLICY

- ✓ Advertised in Legal Organ
- ✓ Posted on County Website
- ✓ Posted on Georgia Procurement Registry
- ✓ Emailed notification through vendor registry
- ✓ Notification through County's Facebook and Twitter accounts
- ✓ Notification through Chamber of Commerce
- ❑ **1 bid received**

Tasks for Project

- ❖ KELLY BRIDGE ROAD - Divided into three tasks:
 - ✓ Task 1A – Structure Number 339:
 - The current structure is a thirty inch (30”) Corrugated Metal Pipe. Existing pipe is in poor condition.
 - ✓ Task 1 B – Structure Number 349:
 - The current structure is a thirty inch (30”) corrugated metal pipe.
 - ✓ Task 1 C – Structure Number 344:
 - The current structure is an eighteen inch (18”) corrugated metal pipe.

Tasks for Project

- ❖ GOODSON ROAD - Divided into two tasks:
 - ✓ Task 2A – Structure Number 973:
 - The current structure is a forty-eight inch (48”) Corrugated Metal Pipe.
 - ✓ Task 2B – Structure Number 974:
 - The current structure is a twenty-four inch (24”) Corrugated Metal Pipe.

Map for Goodson Road Culverts



Goodson Road



Tasks for Project

- ❖ INDIAN COVE ROAD:
- ✓ Task 3:– Structure Number 785:
 - The current structure is a thirty-six inch (36”) Corrugated Metal Pipe.

Map for Indian Cove Road Culvert



Offers Received

SCOPE AS SPECIFIED - PIPE REPLACEMENT

Line Item	Description	Total Estimated Cost
TASK 1 – KELLY BRIDGE ROAD		
TASK 1A:	Structure #339	
TASK 1A TOTAL:		\$291,085.00
TASK 1B:	Structure #340	
TASK 1B TOTAL:		\$228,505.00
TASK 1C:	Structure #344	
TASK 1C TOTAL:		\$43,220.00
TOTAL COSTS FOR TASK 1:		\$562,810.00
TASK 2 – GOODSON ROAD		
TASK 2A:	Structure #973	
TASK 2A TOTAL:		\$106,645.00
TASK 2B:	Structure #974	
TASK 2B TOTAL:		\$66,000.00
TOTAL COSTS FOR TASK 2:		\$172,645.00
Line Item	Description	Total Estimated Cost
TASK 3 – INDIAN COVE ROAD		
TASK 3A:	Structure #785	
TOTAL COSTS FOR TASK 3:		No Bid
TOTAL COSTS FOR ALL WORK:		\$735,455.00
START DATE:		TBD
WARRANTY:		1 YEAR

UNSOLICITED - PIPE LINING SCOPE

Line Item	Description	Total Estimated Cost
TASK 1 – KELLY BRIDGE ROAD		
TASK 1A:	Structure #339	
TASK 1A TOTAL:		\$171,850.00
TASK 1B:	Structure #340	
TASK 1B TOTAL:		\$110,320.00
TASK 1C:	Structure #344	
TASK 1C TOTAL:		\$43,220.00
TOTAL COSTS FOR TASK 1:		\$325,390.00
TASK 2 – GOODSON ROAD		
TASK 2A:	Structure #973	
TASK 2A TOTAL:		\$110,740.00
TASK 2B:	Structure #974	
TASK 2B TOTAL:		\$66,000.00
TOTAL COSTS FOR TASK 2:		\$176,740.00
Line Item	Description	Total Estimated Cost
TASK 3 – INDIAN COVE ROAD		
TASK 3A:	Structure #785	
TOTAL COSTS FOR TASK 3:		\$148,585.00
TOTAL COSTS FOR ALL WORK:		\$650,715.00
START DATE:		TBD
WARRANTY:		1 YEAR

Staff Recommendation

Staff respectfully requests the Board to accept the bid submitted as requested for all tasks within Task 1 and Task 2; to reject the unsolicited bids submitted for all tasks; to rebid Indian Cove Road; to award a contract to Townley Construction Company, LLC, not to exceed the amount of \$735,455.00; and to utilize SPLOST VII Funds for this project.

CUSTOMER ONSITE VISITATION RELEASE AGREEMENT

THIS CUSTOMER ONSITE VISITATION RELEASE AGREEMENT (the "Release") is executed on this _____ day of _____ 2023, by _____ (the "Customer") in favor of **Quality Tire Recycling, LLC**, its directors, officers, agents, employees, representatives, attorneys, successors, assigns, subsidiaries, parent companies and affiliates (hereinafter collectively known as "Liberty").

The Customer desires access to Liberty's facility located at **465 Mallet Street, Jackson, GA 30233** (the "Facility"). The Customer understands that the Facility is a manufacturing plant and may have dangerous conditions, including but not limited to powered industrial trucks, uneven surfaces, moving tires, and heavy operating machinery, which may pose significant risks such as bodily injury, personal injury, illness, death, property damage or other loss, and that timely medical attention cannot be guaranteed by Liberty.

In consideration for being granted access to the Facility, the Customer on behalf of himself, personal representatives, heirs, executors, administrators, agents and assigns hereby freely, voluntarily, and without duress executes this Release under the terms below:

1. Release and Waiver. Except to the extent of gross negligence or willful misconduct of Liberty, the Customer does hereby release and forever discharge Liberty from and against any and all loss, damage, expense, liability, claim, injury, settlement, judgment, award, fine, penalty, charge or demand of any nature (hereinafter collectively referred to as "Claim"), either in law or in equity, which arises or may hereafter arise from Customer's activity on or around the Facility, including any Claim which arises as a result of Liberty's assistance with Customers property or may hereafter arise from the Customer's ingress and egress in and to the Facility, whether by roadway or otherwise.
2. Assumption of Risk. The Customer hereby expressly and specifically assumes any and all risk of any and all activities undertaken in, on or around the Facility, including any means by which the Customer accesses or exits the Facility not resulting from gross negligence or willful misconduct of Liberty.
3. Indemnity. The Customer hereby agrees to indemnify and hold Liberty harmless from any and all Claims arising from, or in any way related to Customer's engagements at the Facility not resulting from gross negligence or willful misconduct of Liberty.
4. Safety Rules. The Customer hereby agrees to follow all Liberty rules and regulations concerning safety and access onsite at the Facility.

By signing below, the Customer has read, understood, and executed this Release as of the date first above written.

Customer: _____ Signature: _____

Address: _____

City: _____ State: _____ Zip Code: _____ Phone: _____

Emergency Contact: _____ Phone: _____

Company Represented: _____