

PRT COMMISSION

PICKELBALL

LOCATION

CITY OF
COLUSA



SANKEY-
ELMWOOD
Park



WILL S. GREEN
Park

Introduction:

In 2021, the City of Colusa made an effort to revitalize and rebuild its Recreation Department with sports, clinics, camps, and classes for all ages and abilities. With the popularity of Pickleball, PRT Commissioners asked City Staff to look into building courts in one of our local parks. In 2022, City staff proposed and purchased pop-up portable equipment for Tennis Courts at Sankey-Elmwood Park. In 2023, Colusa Recreation offered drop-ins on a pop-up court at the Colusa Scout Cabin.

At the July 17th PRT Meeting, Commissioners agreed on two parks to consider as options to build permanent courts for free community use. The Parks chosen are Will S. Green and Sankey Elmwood Park. This packet gives general specs and estimates for building 1 - 2 courts at each location.

Brief History:

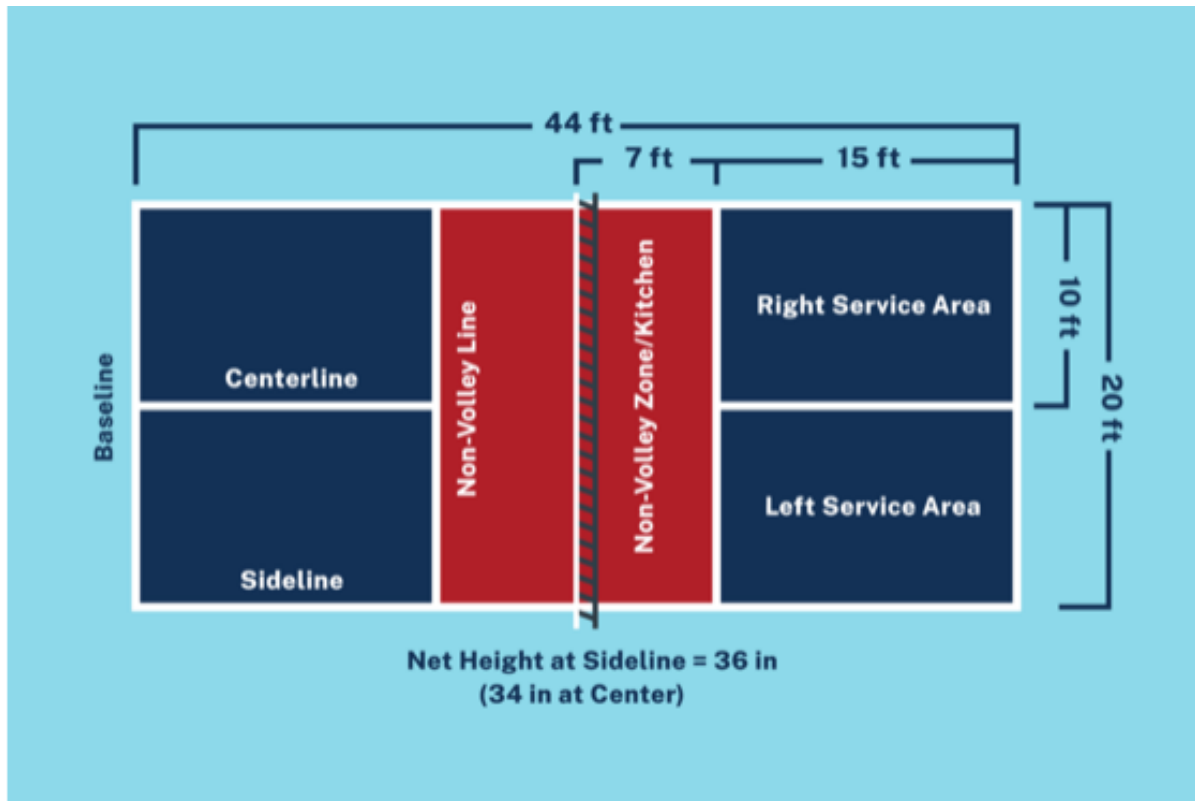
Pickleball was invented in 1965 on Bainbridge Island, a short ferry ride from Seattle, Washington. Three dads – Joel Pritchard, Bill Bell, and Barney McCallum — whose kids were bored with their usual summertime activities — are credited for creating game. Pickleball has evolved from original handmade equipment and simple rules into a popular sport throughout the US and Canada. The game is growing internationally as well, with many European and Asian countries adding courts.

The Basics:

- A fun sport that combines many elements of tennis, badminton and ping-pong.
- Played both indoors or outdoors on a badminton-sized court and a slightly modified tennis net.
- Played with a paddle and a plastic ball with holes.
- Played as doubles or singles.
- Can be enjoyed by all ages and skill levels



Information and Metrics Used:



Dimensions:

Each Playing Court is 44'x20'

Each Court with Bounds area is 30'x60'

Proposed here is a 2 court set up at 60'x60'

Anticipated Cost Estimates:

\$11-\$28 per square foot.

30'x60' court: \$20-50K, depending on materials

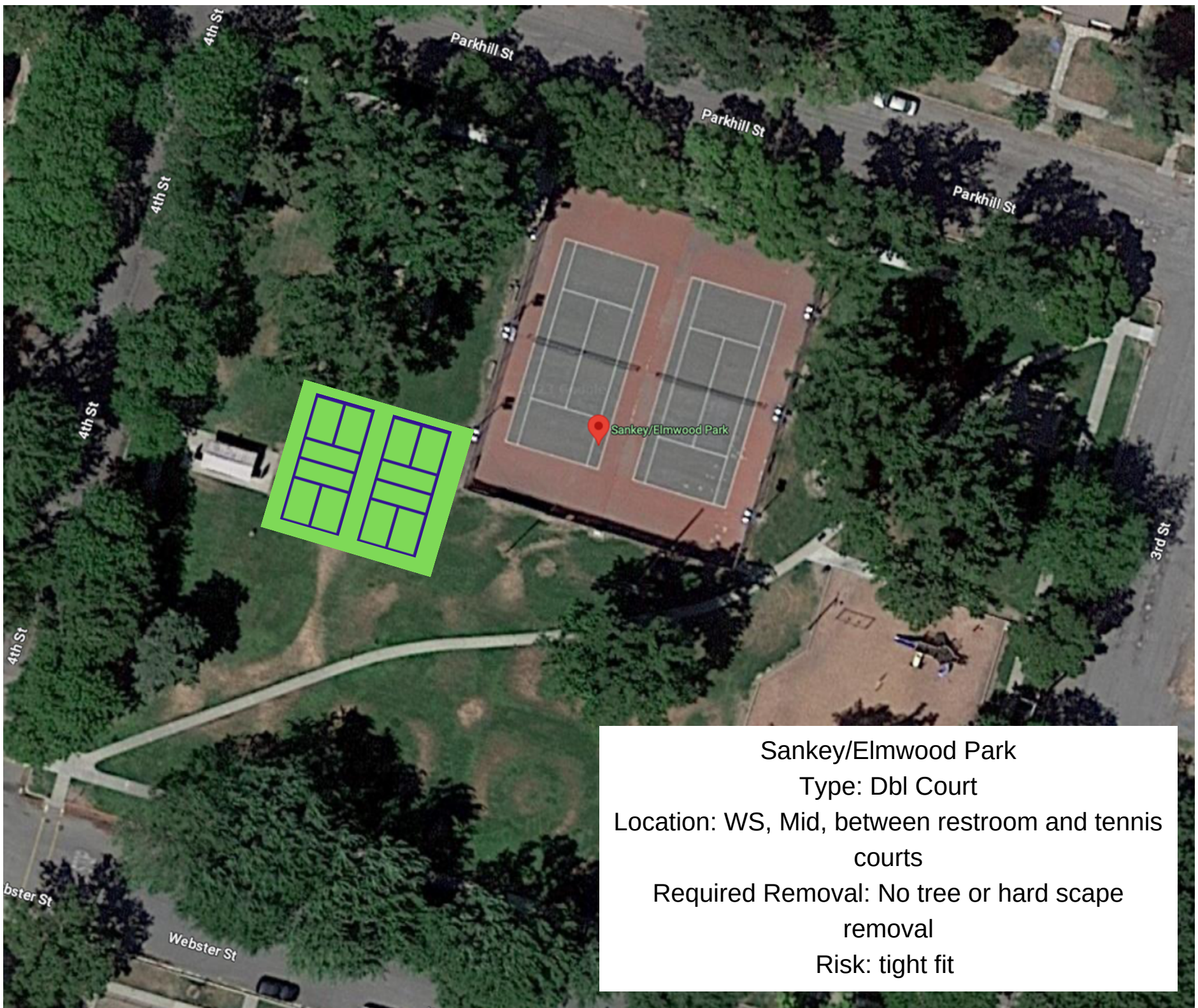
Neighboring Communities:

Yuba City, CA - Sam Brannan Park, 6 Courts

Oroville, CA - Bedrock Tennis & Pickleball Courts, 2 Courts

Willows, CA - Sycamore Park, Pop Up Courts on Tennis Courts

Woodland, CA - Mult. Locations - Plans to build 4 courts at Gonzales Park



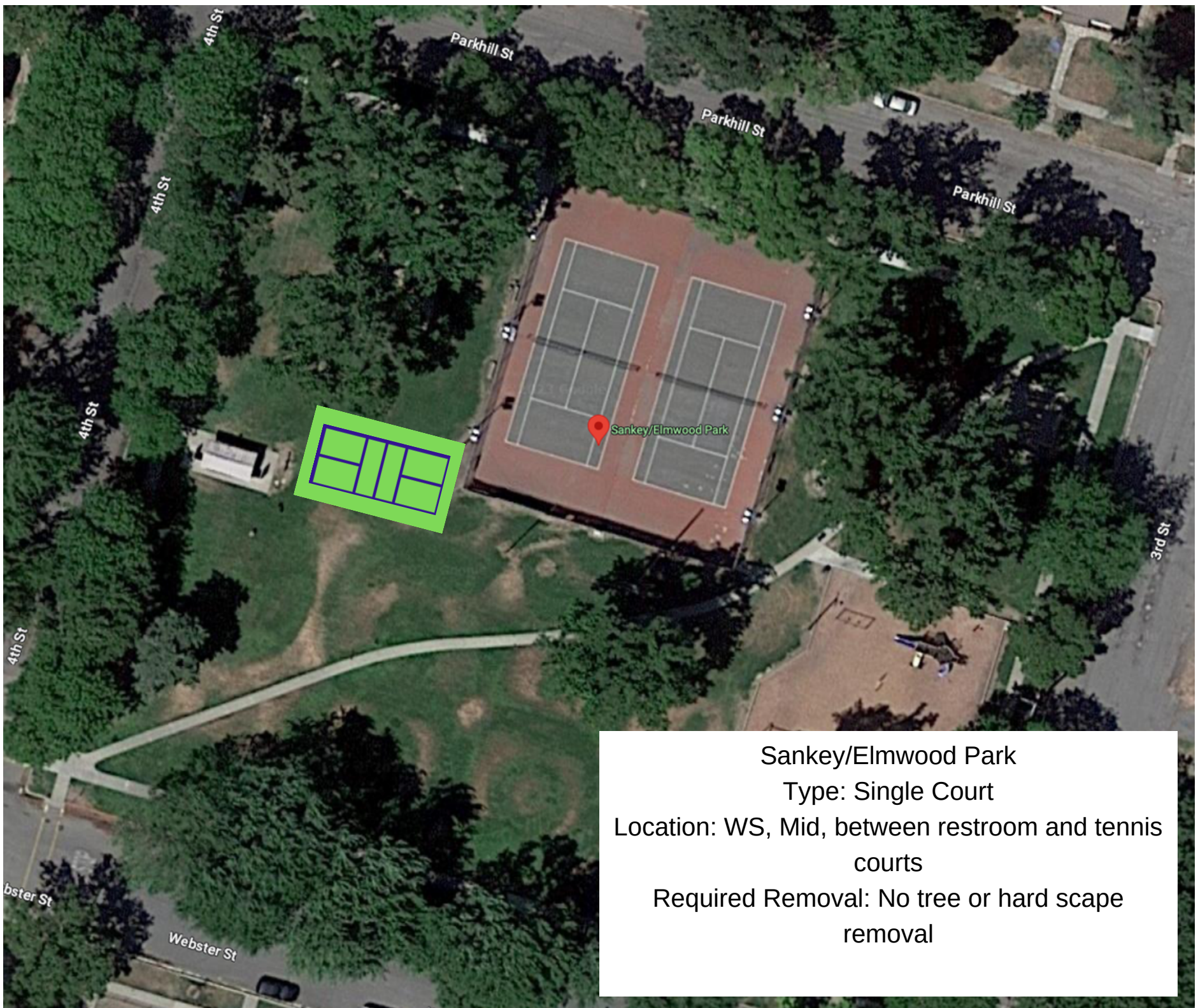
Sankey/Elmwood Park

Type: Dbl Court

Location: WS, Mid, between restroom and tennis courts

Required Removal: No tree or hard scape removal

Risk: tight fit



Sankey/Elmwood Park

Type: Single Court

Location: WS, Mid, between restroom and tennis courts

Required Removal: No tree or hard scape removal

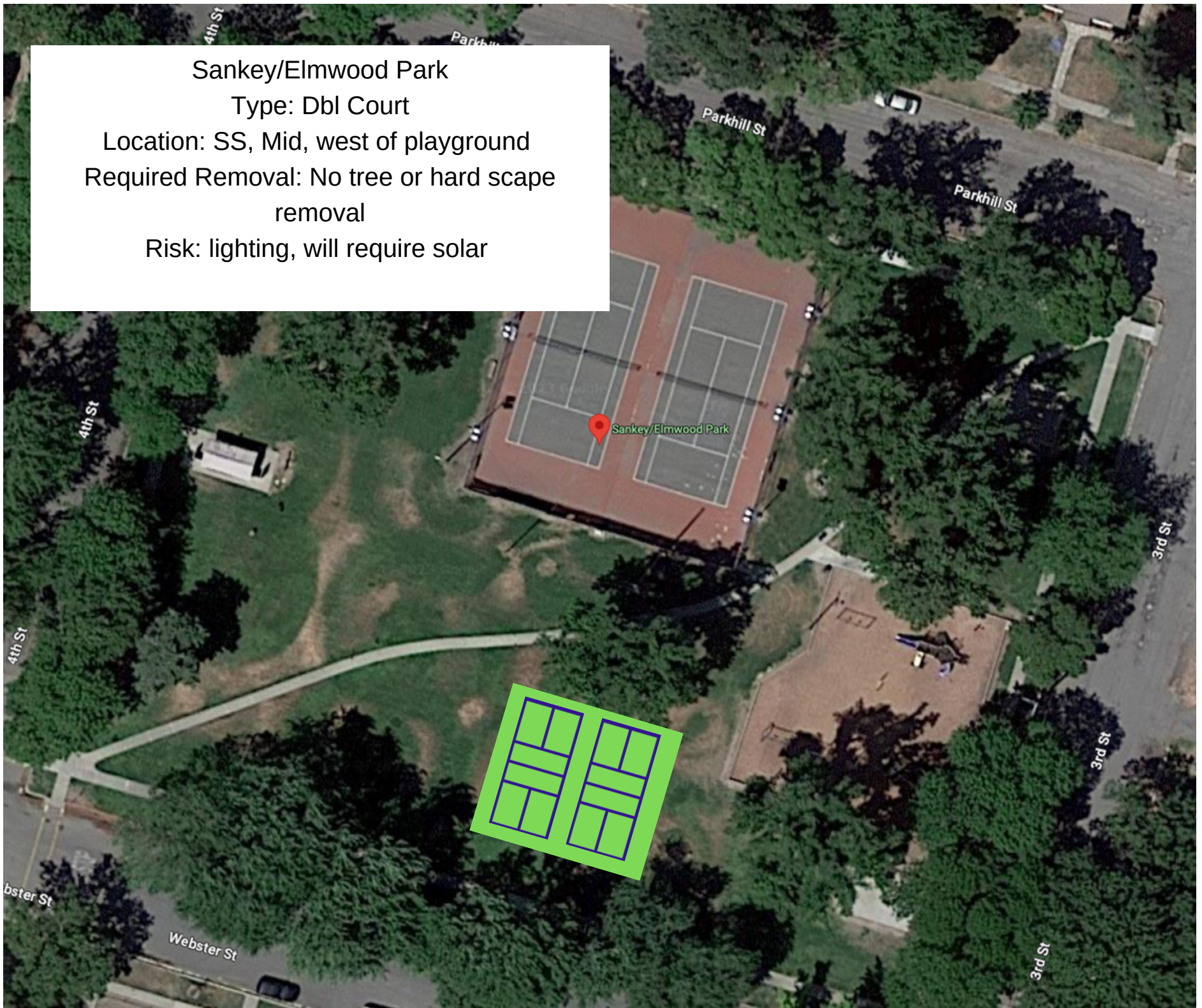
Sankey/Elmwood Park

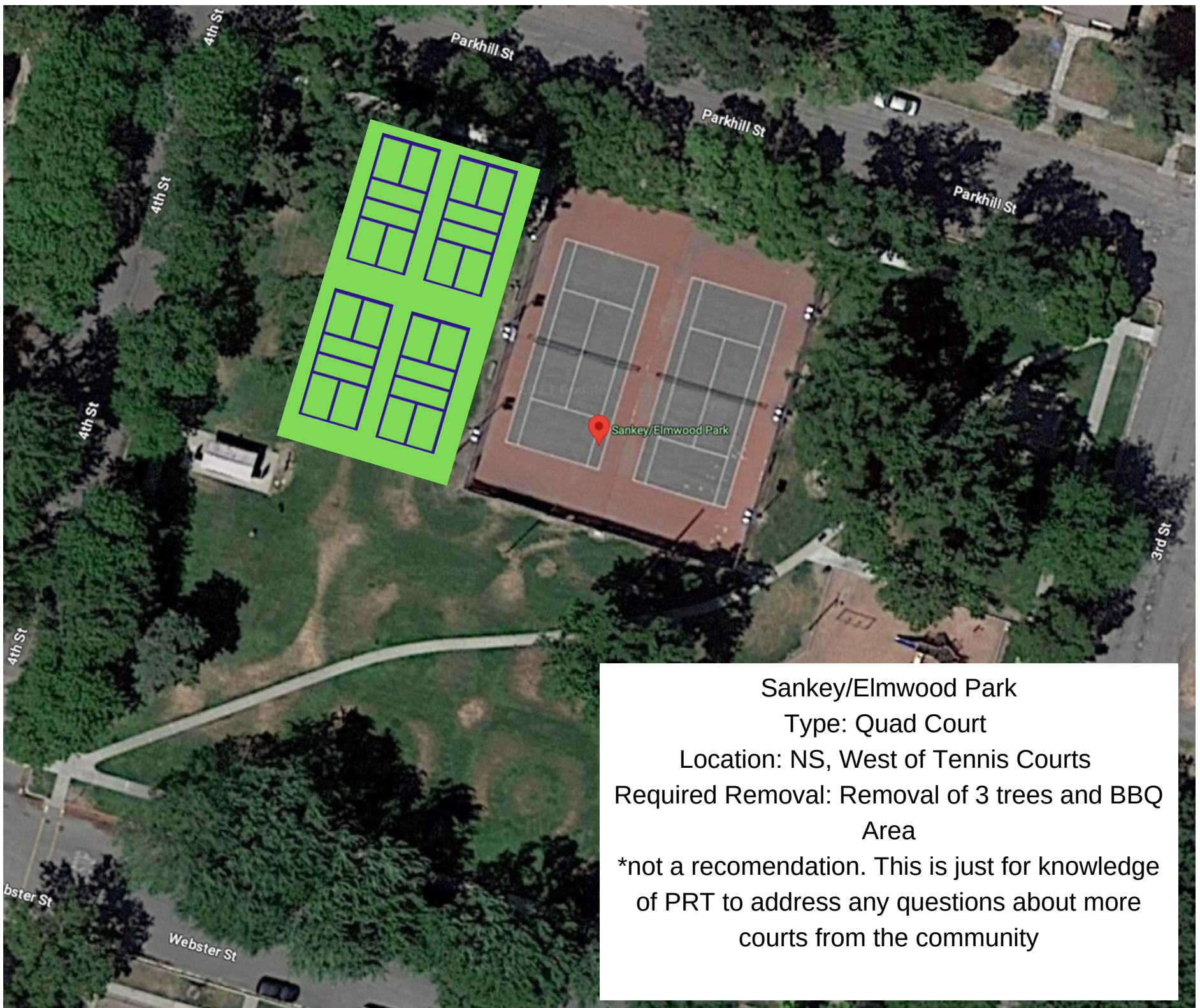
Type: Dbl Court

Location: SS, Mid, west of playground

Required Removal: No tree or hard scape removal

Risk: lighting, will require solar





Sankey/Elmwood Park

Type: Quad Court

Location: NS, West of Tennis Courts

Required Removal: Removal of 3 trees and BBQ Area

*not a recommendation. This is just for knowledge of PRT to address any questions about more courts from the community



Will S. Green
Type: Dbl Court
Location: NS, Mid, west of playground next to basketball court
Required Removal: No tree or hard scape removal. Lined up with curr court slab to account for new tree planted
Risk: lighting, will require solar



Will S. Green

Type: Single Court

Location: NS, West of BB Court, between sidewalks

Required Removal: remove/replace picnic bench and bin.

Risk: lighting, will require solar



Colusa County
Veteran's Services

Parkhill St

Will S Green Park

8th St

Webster St

Webster St

Webster St

Passages Adult
Resource Center

800

8th

770

Will S. Green
 Type: Single Court
 Location: SS, replace in place of horseshoe pits
 Required Removal: Removal of horseshoe pits,
 Removal of up to five trees
 Risk: lighting, will require solar



Swimming Pool

Davison Park

Colusa County
Veteran's Services

Parkhill St

9th St

Parkhill St

Webster St

WEBSTER ST

Webster St

Webster St

AB Davison/Pool
Type: Single Court
Location: SS, South of pool,
east of splash pad
Required Removal: n/a
Risk: loss of parking