



Special Committee of the Whole Meeting Agenda

Tuesday, November 19, 2024 at 6:30 PM

Columbus City Hall – 105 N. Dickason Boulevard

Roll Call

Notice of Open Meeting

Approval of Agenda

Public Comment

New Business

1. Consideration and discussion of recent request for services (electrical, internment, lawn service, hvac, plumbing, tree services, cleaning)
2. Discussion regarding change order No. 2 with Forest Landscaping and Construction, Inc related to 2024 Street and Utility Construction
3. Discussion regarding task order with Ruekert-Mielke for 2025 street reconstruction for Brookside Drive
4. Discussion and review of bids for replacement of pedestrian school crossings
5. Discussion of WisDOT Request of STH 073, Ludington Street
6. 2024 Wine Walk Picnic License Application

Adjourn

*A quorum of city committees and/or commissions may be present at this meeting. No action will be taken or considered by those committees and/or commissions.



Agenda Item Report

Meeting Type: Committee of the Whole

Meeting Date: October 29, 2024

Item Title: Consideration and discussion of recent request for services (electrical, internment, lawn service, hvac, plumbing, tree services, cleaning)

Submitted By: Matt Amundson, City Administrator

Detailed Description of Subject Matter:

DPW has sent out request for proposals related to services provided to the City for 2025 and 2026. I've included a summary of the results received. Unfortunately, we have only received one proposal for a number of these services.

List all Supporting Documentation Attached:

Summary of proposals

Action Requested of Council:

Award of services for 2025 and 2026.

Public Works - Request for services
2025 & 2026

Service	Company	2025 Rate	2025 Total	2026 Rate	2026 Total
Electrical	SNS	\$75			
Hillside Interment	Meitner's Land Service	\$800 (burial) \$500 (cremation)			
Hillside Turf	Lakeside Lawn Care	\$1700 (mowing) \$2300 (trimming)	\$74,100	\$1760 (mowing) \$2380 (trimming)	\$76,700
HVAC	TAS Heating & Cooling	\$75			
Plumbing	Wright Plumbing	\$110			
Tree Service	K&B Tree Service	\$32.93 (1-10") \$46.11 (11-30") \$56.95 (31-40") \$74.11 (41"+) \$11.48 (stump) \$10.91 (pruning)			
Weed, Grass, Shrubbery	Lakeside Lawn Care	\$75			
Pavilion Cleaning	Sassy Heifer	\$175 (weekly)	\$9,100	\$175 (weekly)	\$9,100

Public Works - Request for services

Submittals not being considered

Service	Company	2025 Rate	2025 Total	2026 Rate	2026 Total
Electrical	Pieper Power	\$125 (Journey) \$135 (Foreman)			

Pavilion Cleaning	Kayla Custom Cleaning	\$215 (weekly)	\$11,180	\$219 (weekly)	\$11,395
	Environment Control	\$325 (weekly)	\$16,900	\$375 (weekly)	\$19,500



Agenda Item Report

Meeting Type: Committee of the Whole

Meeting Date: November 19, 2024

Item Title: Discussion regarding change order No. 2 with Forest Landscaping and Construction, Inc related to 2024 Street and Utility Construction

Submitted By: Matt Amundson, City Administrator

Detailed Description of Subject Matter:

This is the final adjustment and project close out documents and lowers the total contract by \$30,617.96 to a revised total of \$1,246,780.30

List all Supporting Documentation Attached:

Change Order No. 2

Action Requested of Council:

Approve Change Order No. 2

Date of Issuance: November 5, 2024	Effective Date: December 3, 2024
Project: 2024 Street and Utility Reconstruction	Owner: City of Columbus
Contract:	Owner's Contract No.:
Contractor: Forest Landscaping and Construction, Inc.	Engineer: Ruekert & Mielke, Inc.
Address: W8583 Finch Brothers Road	Engineer's Project No.: 8117-10096
Lake Mills WI 53551	Effective Date of Contract: March 5, 2024

The Contract is modified as follows upon execution of this Change Order:

Description: Close out change order for project and contract time extension

Reason for Change Order: Final Adjustments

Attachments: Exhibits attached

CHANGE IN CONTRACT PRICE	CHANGE IN CONTRACT TIMES
Original Contract Price \$ 1,225,571.25	Original Contract Times: Substantial Completion: 08/16/24 Ready for Final Payment: 08/30/24 days or dates
Increase from previously approved Change Orders No. 0 to No. 1: \$ 51,827.00	Increase from previously approved Change Orders No. to No. : Substantial Completion: N/A Ready for Final Payment: N/A days
Contract Price prior to this Change Order: \$ 1,277,398.25	Contract Times prior to this Change Order: Substantial Completion: N/A Ready for Final Payment: N/A days or dates
Decrease of this Change Order: (\$ 30,617.96)	Increase of this Change Order: Substantial Completion: 10/17/24 Ready for Final Payment: 11/01/24 days or dates
Contract Price incorporating this Change Order: \$ 1,246,780.30	Contract Times with all approved Change Orders: Substantial Completion: 10/17/24 Ready for Final Payment: 11/01/24 days or dates

RECOMMENDED:

ACCEPTED:

Signature: Jason P. Lietha
Engineer (Authorized Signature)

Signature: _____
Owner (Authorized Signature)

ACCEPTED:
Signature: [Signature]
Contractor (Authorized Signature)

Date: 11/5/24

Date: _____

Date: 11/5/24

City of Columbus								CHANGEORDER#2																																																																																																																																																																																																																																																																																																																																																																																																																																																																																																																																																																																																																																																																																																																																																																																																																																																																																																																																																																																																																																																																																																																																																																																																																																																																																																																																																																																																																																																																																																																																																																																																																																																																																																																																																																																
------------------	--	--	--	--	--	--	--	---------------	--	--	--	--	--	--	--	--	--	--	--	--	--	--	--	--	--	--	--	--	--	--	--	--	--	--	--	--	--	--	--	--	--	--	--	--	--	--	--	--	--	--	--	--	--	--	--	--	--	--	--	--	--	--	--	--	--	--	--	--	--	--	--	--	--	--	--	--	--	--	--	--	--	--	--	--	--	--	--	--	--	--	--	--	--	--	--	--	--	--	--	--	--	--	--	--	--	--	--	--	--	--	--	--	--	--	--	--	--	--	--	--	--	--	--	--	--	--	--	--	--	--	--	--	--	--	--	--	--	--	--	--	--	--	--	--	--	--	--	--	--	--	--	--	--	--	--	--	--	--	--	--	--	--	--	--	--	--	--	--	--	--	--	--	--	--	--	--	--	--	--	--	--	--	--	--	--	--	--	--	--	--	--	--	--	--	--	--	--	--	--	--	--	--	--	--	--	--	--	--	--	--	--	--	--	--	--	--	--	--	--	--	--	--	--	--	--	--	--	--	--	--	--	--	--	--	--	--	--	--	--	--	--	--	--	--	--	--	--	--	--	--	--	--	--	--	--	--	--	--	--	--	--	--	--	--	--	--	--	--	--	--	--	--	--	--	--	--	--	--	--	--	--	--	--	--	--	--	--	--	--	--	--	--	--	--	--	--	--	--	--	--	--	--	--	--	--	--	--	--	--	--	--	--	--	--	--	--	--	--	--	--	--	--	--	--	--	--	--	--	--	--	--	--	--	--	--	--	--	--	--	--	--	--	--	--	--	--	--	--	--	--	--	--	--	--	--	--	--	--	--	--	--	--	--	--	--	--	--	--	--	--	--	--	--	--	--	--	--	--	--	--	--	--	--	--	--	--	--	--	--	--	--	--	--	--	--	--	--	--	--	--	--	--	--	--	--	--	--	--	--	--	--	--	--	--	--	--	--	--	--	--	--	--	--	--	--	--	--	--	--	--	--	--	--	--	--	--	--	--	--	--	--	--	--	--	--	--	--	--	--	--	--	--	--	--	--	--	--	--	--	--	--	--	--	--	--	--	--	--	--	--	--	--	--	--	--	--	--	--	--	--	--	--	--	--	--	--	--	--	--	--	--	--	--	--	--	--	--	--	--	--	--	--	--	--	--	--	--	--	--	--	--	--	--	--	--	--	--	--	--	--	--	--	--	--	--	--	--	--	--	--	--	--	--	--	--	--	--	--	--	--	--	--	--	--	--	--	--	--	--	--	--	--	--	--	--	--	--	--	--	--	--	--	--	--	--	--	--	--	--	--	--	--	--	--	--	--	--	--	--	--	--	--	--	--	--	--	--	--	--	--	--	--	--	--	--	--	--	--	--	--	--	--	--	--	--	--	--	--	--	--	--	--	--	--	--	--	--	--	--	--	--	--	--	--	--	--	--	--	--	--	--	--	--	--	--	--	--	--	--	--	--	--	--	--	--	--	--	--	--	--	--	--	--	--	--	--	--	--	--	--	--	--	--	--	--	--	--	--	--	--	--	--	--	--	--	--	--	--	--	--	--	--	--	--	--	--	--	--	--	--	--	--	--	--	--	--	--	--	--	--	--	--	--	--	--	--	--	--	--	--	--	--	--	--	--	--	--	--	--	--	--	--	--	--	--	--	--	--	--	--	--	--	--	--	--	--	--	--	--	--	--	--	--	--	--	--	--	--	--	--	--	--	--	--	--	--	--	--	--	--	--	--	--	--	--	--	--	--	--	--	--	--	--	--	--	--	--	--	--	--	--	--	--	--	--	--	--	--	--	--	--	--	--	--	--	--	--	--	--	--	--	--	--	--	--	--	--	--	--	--	--	--	--	--	--	--	--	--	--	--	--	--	--	--	--	--	--	--	--	--	--	--	--	--	--	--	--	--	--	--	--	--	--	--	--	--	--	--	--	--	--	--	--	--	--	--	--	--	--	--	--	--	--	--	--	--	--	--	--	--	--	--	--	--	--	--	--	--	--	--	--	--	--	--	--	--	--	--	--	--	--	--	--	--	--	--	--	--	--	--	--	--	--	--	--	--	--	--	--	--	--	--	--	--	--	--	--	--	--	--	--	--	--	--	--	--	--	--	--	--	--	--	--	--	--	--	--	--	--	--	--	--	--	--	--	--	--	--	--	--	--	--	--	--	--	--	--	--	--	--	--	--	--	--	--	--	--	--	--	--	--	--	--	--	--	--	--	--	--	--	--	--	--	--	--	--	--	--	--	--	--	--	--	--	--	--	--	--	--	--	--	--	--	--	--	--	--	--	--	--	--	--	--	--	--	--	--	--	--	--	--	--	--	--	--	--	--	--	--	--	--	--	--	--	--	--	--	--	--	--	--	--	--	--	--	--	--	--	--	--	--	--	--	--	--	--	--	--	--	--	--	--	--	--	--	--	--	--	--	--	--	--	--	--	--	--	--	--	--	--	--	--	--	--	--	--	--	--	--	--	--	--	--	--	--	--	--	--	--	--	--	--	--	--	--	--	--	--	--	--	--	--	--	--	--	--	--	--	--	--	--	--	--	--	--	--	--	--	--	--	--	--	--	--	--	--	--	--	--	--	--	--	--	--	--	--	--	--	--	--	--	--	--	--	--	--	--	--	--	--	--	--	--	--	--	--	--	--	--	--	--	--	--	--	--	--	--	--	--	--	--	--	--	--	--	--	--	--	--	--	--	--	--	--	--	--	--	--	--	--	--	--	--	--	--	--	--	--	--	--	--	--	--	--	--	--	--	--	--	--	--	--	--	--	--	--	--	--	--	--	--	--	--	--	--	--	--	--	--	--	--	--	--	--	--	--	--	--	--	--	--	--	--	--	--	--	--	--	--	--	--	--	--	--	--	--	--	--	--	--	--	--	--	--	--	--	--	--	--	--	--	--	--	--	--	--	--	--	--	--	--	--	--	--	--	--	--	--	--	--	--	--	--	--	--	--	--	--	--	--	--	--	--	--	--	--	--	--	--	--	--	--	--	--	--	--	--	--	--	--	--	--	--	--	--	--	--	--	--	--	--	--	--	--	--	--	--	--	--	--	--	--	--	--	--	--	--	--	--	--	--	--	--	--	--	--	--	--	--	--	--	--	--	--	--	--	--	--	--	--	--	--	--	--	--	--	--	--	--	--	--	--	--	--	--	--	--	--	--	--	--	--	--	--	--	--	--	--	--	--	--	--	--	--	--	--	--	--	--	--	--	--	--	--	--	--	--	--	--	--	--	--	--	--	--	--	--	--	--	--	--	--	--	--	--	--	--	--	--	--	--	--	--	--	--	--	--	--	--	--	--	--	--	--	--	--	--	--	--	--	--	--	--	--	--	--	--	--	--	--	--	--	--	--	--	--	--	--	--	--	--	--	--	--	--	--	--	--	--	--	--	--	--	--	--	--	--	--	--	--	--	--	--	--	--	--	--	--	--	--	--	--	--	--	--	--	--	--	--	--	--	--	--	--	--	--	--	--	--	--	--	--	--	--	--	--	--	--	--	--	--	--	--	--	--	--	--	--	--	--	--	--	--	--	--	--	--	--	--	--	--	--	--	--	--	--	--	--	--	--	--	--	--	--	--	--	--	--	--	--	--	--	--	--	--	--	--	--	--	--	--	--	--	--	--	--	--	--	--	--	--	--	--	--	--	--	--	--	--	--	--	--	--	--	--	--	--	--	--	--	--	--	--	--	--	--	--	--	--	--	--	--	--	--	--	--	--	--	--	--	--	--	--	--	--	--	--	--	--	--	--	--	--	--	--	--	--	--	--	--	--	--	--	--	--	--	--	--	--	--	--	--	--	--	--	--	--	--	--	--	--	--	--	--	--	--	--	--	--	--	--	--	--	--	--	--	--	--	--	--	--	--	--	--	--	--	--	--	--	--

CHANGEORDER#2															
MA 3-3	Remove Asphalt Pavement	SY	655	\$5.00	\$3,275.00							95.00	750.00	\$475.00	\$3,750.00
MA 3-4	30-Inch Concrete Curb and Gutter	LF	220	\$50.00	\$11,000.00							8.00	228.00	\$400.00	\$11,400.00
MA 3-5	Topsoil, Seed, Fertilize, Class 1 Type A Erosion Mat	LS	1	\$5,000.00	\$5,000.00										\$5,000.00
MA 3-6	1.75-Inch Asphaltic Concrete Binder Course (LT)	TON	75	\$102.00	\$7,650.00							11.52	86.52	\$1,175.04	\$8,825.04
MA 3-7	1.75-Inch Asphaltic Concrete Surface Course (LT)	TON	75	\$102.00	\$7,650.00							12.11	87.11	\$1,235.22	\$8,885.22
Mandatory Alternate 4 - Blackhawk Drive															
MA 4-1	Traffic Control	LS	1	\$3,500.00	\$3,500.00										\$3,500.00
MA 4-2	Full Depth Saw Cutting	LF	225	\$5.00	\$1,125.00							-160.00	65.00	(\$800.00)	\$325.00
MA 4-3	Remove Asphalt Pavement	SY	715	\$6.00	\$4,290.00							-125.00	590.00	(\$750.00)	\$3,540.00
MA 4-4	Remove and Replace 30-Inch Concrete Curb and Gutter	LF	120	\$50.00	\$6,000.00							100.00	220.00	\$5,000.00	\$11,000.00
MA 4-5	1.75-Inch Asphaltic Concrete Binder Course (LT)	TON	30	\$145.00	\$4,350.00							36.00	66.00	\$5,220.00	\$9,570.00
MA 4-6	1.75-Inch Asphaltic Concrete Surface Course (LT)	TON	30	\$145.00	\$4,350.00							56.86	86.86	\$8,244.70	\$12,594.70
Change Order #1															
CO1-1	Asphalt utility patch for Poser Clinic Lateral	TON	4		\$850.00		4.00	\$3,400.00	\$3,400.00			1.00	5.00	\$850.00	\$4,250.00
CO1-2	Fire Station Parking Lot Resurfacing	TON	55		\$160.00		55.00	\$8,800.00	\$8,800.00			26.61	81.61	\$4,257.60	\$13,057.60
CO1-3	Thayer & Chapel Street Resurfacing - Binder Asphalt	TON	207		\$91.00		207.00	\$18,837.00	\$18,837.00			-55.02	151.98	(\$5,006.82)	\$13,830.18
CO1-4	Thayer & Chapel Street Resurfacing - Surface Asphalt	TON	156		\$99.00		156.00	\$15,444.00	\$15,444.00			-4.43	151.57	(\$438.57)	\$15,005.43
CO1-5	Thayer & Chapel Street Fine Grading	SY	1782		\$3.00		1,782.00	\$5,346.00	\$5,346.00						\$5,346.00
Change Order #2															
CO2-1	1-Inch Copper Water Service - Open Trench w/ Granular Backfill	LF	8.00								\$65.00	8.00	8.00	\$520.00	\$520.00
CO2-2	1-Inch Tap and Corporation Valve	EA	1.00								\$300.00	1.00	1.00	\$300.00	\$300.00
CO2-3	1-Inch Curb Valve and Curb Box	EA	1.00								\$300.00	1.00	1.00	\$300.00	\$300.00
CO2-4	Sanitary MH Adjustments and Seals	EA	7.00								\$742.00	7.00	7.00	\$5,194.00	\$5,194.00
CO2-5	Hydrant Extension Commercial Drive	EA	2.00								\$1,380.00	2.00	2.00	\$2,760.00	\$2,760.00
CO2-6	Drain Extension Commercial Drive	LF	42.00								\$50.00	42.00	42.00	\$2,100.00	\$2,100.00
CO2-7	Hydrant Replacement Reconfiguration on Commercial Drive	LS	1.00								\$5,150.00	1.00	1.00	\$5,150.00	\$5,150.00
CO2-8	Sump Pump Connection Ingalsbe	LS	1.00								\$775.00	1.00	1.00	\$775.00	\$775.00
CO2-9	Inlet 4 Commercial Drive Size Change	LS	1.00								\$1,450.00	1.00	1.00	\$1,450.00	\$1,450.00
CO2-10	Culvert Extensions	LS	1.00								\$1,565.00	1.00	1.00	\$1,565.00	\$1,565.00
TOTAL					\$1,225,571.25			\$51,827.00	\$51,827.00					(\$30,617.96)	\$1,246,780.30
TOTAL CONTRACT									\$1,277,398.25						\$1,246,780.30

Item #2.

This is Task Order No. #2024-05,
consisting of 5 pages.

City of Columbus
2025 Brookside Lane Reconstruction

In accordance with paragraph 1.1 of the Master Professional Service Agreement between the City of Columbus (City) and Ruekert and Mielke, Inc. (R/M) for Professional Services – Task Order Edition dated March 20, 2019 (“Agreement”), City and R/M agree as follows:

1. Specific Project Data

- A. This task order will cover the required data collection services, design, permitting and bidding for the 2025 Brookside Lane Reconstruction project for the City of Columbus. Data collection services include topographic survey of all surface and underground features within the right-of-way and water main area leading to 2nd Ward Creek, property corner reconnaissance, sanitary and storm sewer structure measure downs, parcel mapping, soil borings and geotechnical evaluation, and an engineering field check. Survey will also be conducted outside the right-of-way as necessary to obtain sufficient topographic information for purposes of designing certain driveways and storm drainage.
- B. This task order also covers design, bidding, permitting, and administrative related services required for the completion of the 2025 Brookside Lane Reconstruction Project. This project will include the following items in general:
 - 1. Reconstruction of Brookside Lane from Avalon Road southwest to, and including, the cul de sac.
 - 2. Storm sewer extension on Brookside Lane to improve drainage.
 - 3. Sanitary sewer replacement with all new sanitary sewer laterals to the right-of-way.
 - 4. Water main replacement and upsizing with all new water services to the right-of-way.
- C. This task order also includes the preparation of special assessments as directed by the City.
- D. This task order includes permitting required for the replacement of sanitary sewer and storm sewer through WDNR.
- E. This task order includes wetland delineation of area near creek.
- F. This task order will include one public informational meeting to accept feedback and respond to questions.
- G. For a map of the project limits, refer to the attached Exhibit A.

2. Services of R/M

- A. DATA COLLECTION
 - 1. Utility Coordination Including Digger’s Request.
 - 2. Soil Boring Coordination (R/M will schedule, field mark the borings for location and survey in location).
 - 3. Topographic Survey Including Control Points, Property Corners, Soil Borings, and Utility Measure Downs.
 - 4. Plat and Survey Research (2 title reports to confirm easements to creek).
 - 5. Field wetland survey.

6. Survey Data Download, Quality Control, and Preparation for Design.
7. Build Surface Model, Create Pipe Networks, and Setup Drawings.
8. Analyze Survey Data and Cadastral Mapping.
9. Engineering Field Check.
10. Soil Borings (2 full depth borings).
11. Reimbursable Expenses Including Mileage and Survey Equipment as Necessary.

B. PLAN DESIGN

1. Project Administration.
2. Design and Prepare Roadway & Storm Sewer Plan and Profiles.
3. Design and Prepare Water & Sanitary Sewer Plan and Profiles.
4. Design and Prepare Erosion Control Drawings and Notes.
5. Prepare Existing and New Street Cross Sections.
6. Review Driveway Tie In Elevations.
7. Intersection Design and Prepare Intersection Drawings.
8. Prepare Cover, Project Overview, Typical Sections, and Construction Details.
9. Measure Quantities and Prepare Opinion of Probable Construction Cost.
10. Conduct Storm Water/Drainage Analysis.
11. Model Water Main to Determine Sizing
12. Prepare Pavement Analysis.
13. QA/QC.
14. Prepare Specifications - Legal and Procedural.
15. Prepare Specifications – Technical.
16. Complete Project Manual for Bidding and Upload to Quest.

C. BIDDING

1. General Coordination with City.
2. General Coordination with Potential Bidders.
3. Addenda Preparation.
4. Attend Bid Opening.
5. Review Bids and Prepare Bid Tabulation.
6. Make Formal Award Recommendation to Client.

D. PERMITS

1. Endangered Resources Review (ER).
2. WDNR Sanitary Sewer Extension.
3. WDNR Storm Water - Construction (WRAPP).
4. WDNR Water Main Extension.

E. MEETINGS

1. Plan Review Meetings (30%, 60%, 90%).
2. Public Information Meeting (1 meeting).

F. SPECIAL ASSESSMENTS

1. Obtain Surveys and CSMs to Review Property Information.
2. Prepare Draft Assessment Report.
3. Attend Public Hearing.
4. Finalize Proposed Assessment Prior to Construction.
5. Prepare Final Assessment After Construction.

3. City's Responsibilities

City shall have those responsibilities set forth in Section II of Agreement, subject to the following:

- City shall confirm attendance prior to meeting date.
- Attend utility coordination meetings.
- Attend plan review meetings.
- Provide existing utility map of information.
- Provide timely review of plans.
- Payment of permitting fees.

4. Items Excluded

A. The following items are excluded from the Scope of Services:

- Permit fees.
- Flow monitoring of sewer.
- Easement creation and/or survey staking.
- Title report required to create legal documents (other than listed above).
- Utility modeling.
- Environmental, archeological or historical research required beyond screening. This includes any site visit or work by specialized consultant.
- Follow up site visits, meetings, and certifications.
- Contaminated site investigations, coordination, and/or remediation design.
- Alternatives analysis.
- Record drawings.
- Boundary survey or property survey.
- Real estate appraisal/acquisition.
- Permitting unless specifically presented.
- Public hearings unless specifically presented.
- Any grant application completion or administration related to this project.
- Any construction related services.

Times for Rendering Services

- A. Schedules are subject to change due to activities beyond the control of R/M. In general, the tentative schedule is as follows:

Authorization/Task Order Approval	11/19/2024
Field Survey	11/20/2024 – 12/01/2024
Public Information Meeting #1	12/18/2024
Preliminary Design	12/01/2024 – 12/18/2024
Final Design	12/19/2024 – 01/10/2025
Special Assessment Report Complete / Public Hearing	01/15/2025
Advertise for Bid	01/18/2025 & 01/25/2025
Bid Opening	02/06/2025
COW Approval	02/18/2025
Council approval	03/04/2025
Special Assessment Update with Bid Information	02/10/2025
Start Construction	TBD
Substantial Completion	TBD
Final Completion	TBD

5. Payments to R/M

- A. City shall pay R/M for services rendered as follows:

<u>Category of Services</u>	<u>Compensation Method</u>	<u>Estimate of Compensation for Services</u>
Survey	Standard Hourly Rates	\$9,375
Geotechnical	Standard Hourly Rates	\$3,350
Wetland Delineation	Standard Hourly Rates	\$3,500
Design	Standard Hourly Rates	\$25,575
Permitting	Standard Hourly Rates	\$5,100
Meetings	Standard Hourly Rates	\$2,200
Bidding	Standard Hourly Rates	\$5,300
Special Assessment	Standard Hourly Rates	\$4,400
TOTAL =		<u>\$58,800</u>

- B. The terms of payment are set forth in Section III and RM standard rates for 2024 and 2025.
- C. Terms and Conditions: Execution of this Task Order by City and R/M shall make it subject to the terms and conditions of the Agreement (as modified above), which Agreement is incorporated by this reference. R/M is authorized to begin performance upon its receipt of a copy of this Task Order signed by City.

TASK ORDER

Item #3.

TASK ORDER NO. 2024-05
2025 BROOKSIDE LANE RECONSTRUCTION
Between City of Columbus
and
Ruekert & Mielke, Inc.
Dated November 12, 2024

Terms and Conditions: Execution of this Task Order by Owner and Engineer shall make it subject to terms and conditions, (as modified above) set forth in the Master Engineering Agreement Amendment between Owner and Engineer, dated March 20, 2019, which are incorporated by this reference. Engineer is authorized to begin performance upon its receipt of a copy of this Task Order signed by Owner.

The Effective Date of this Task Order is _____.

OWNER:

ENGINEER:

City of Columbus

Ruekert & Mielke, Inc.

Signature: _____

Signature: _____

Name: _____

Name: Jason P. Lietha, P.E.

Title: _____

Title: Vice President

Date: _____

Date: November 12, 2024

DESIGNATED REPRESENTATIVE FOR TASK ORDER

Name: Matt Amundson

Name: Andrew W. Burt, P.E.

Title: City Administrator

Title: Senior Project Manager

Address: 105 North Dickason Blvd.
Columbus WI 53925

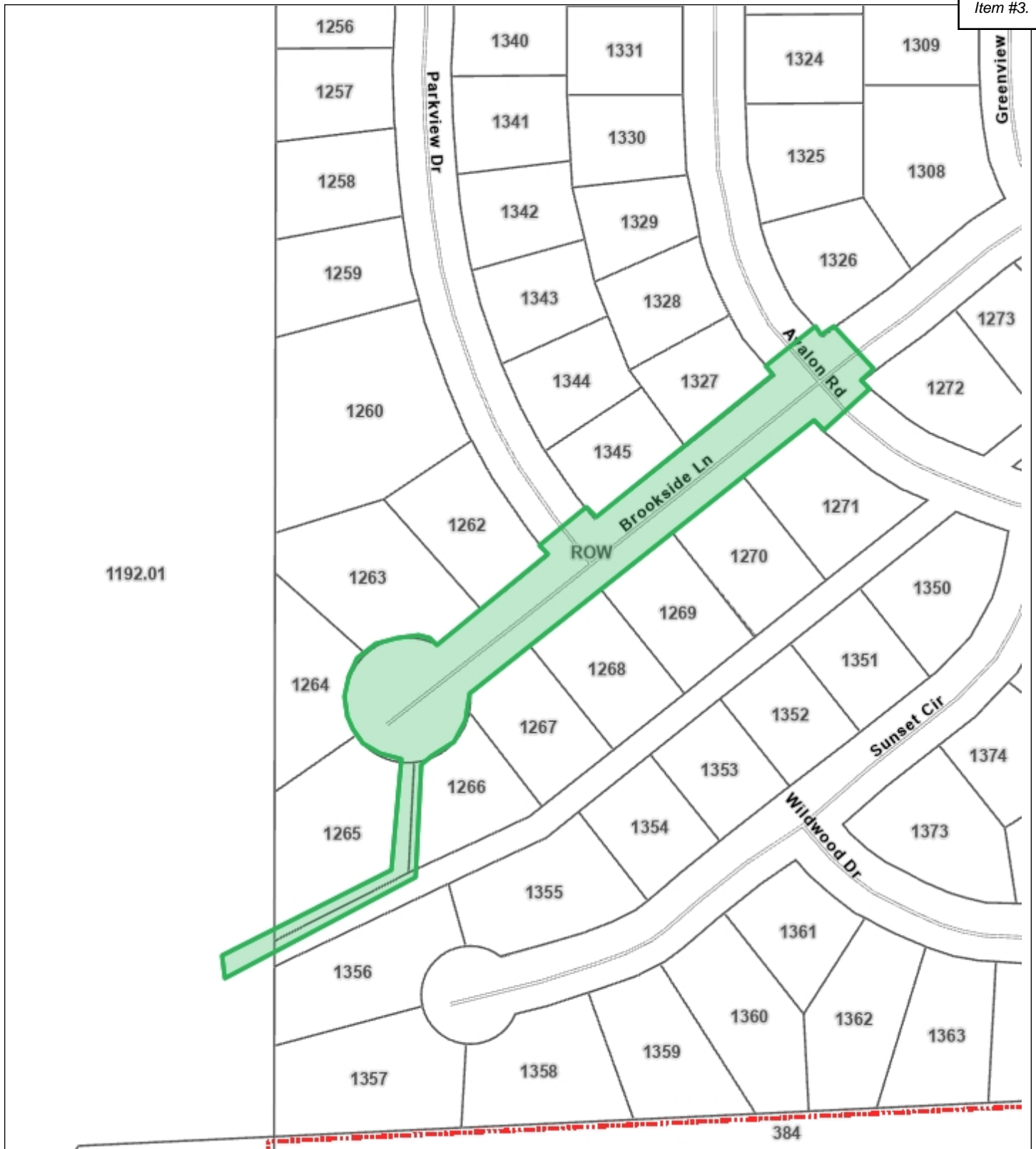
Address: 4630 S. Biltmore Lane
Madison, WI 53718

Email: mamundsom@columbuswi.gov

Email: aburt@ruekert-mielke.com

Phone: 920.623.5900

Phone: 608-819-2600



City of Columbus

Exhibit A - 2025 Brookside Lane Reconstruction

DISCLAIMER:

This map is not a survey of the actual boundary of any property this map depicts.

The City of Columbus does not guarantee the accuracy of the material contained here in and is not responsible for any misuse or misrepresentation of this information or its derivatives.



SCALE: 1 = 153'

City Of Columbus

105 N Dickason Blvd
Columbus, WI 53925
920-623-5900

Print Date: 11/12/2024



Agenda Item Report

Meeting Type: Committee of the Whole

Meeting Date: November 19, 2024

Item Title: Discussion and review of bids for replacement of pedestrian school crossings

Submitted By: Matt Amundson, City Administrator

Detailed Description of Subject Matter:

Staff have solicited quotes for replacing the 9 existing pedestrian school crossings that are included in the 2025 Capital Improvement Plan. Currently 4 of the lights are not functioning correctly and we are not able to fix, adjust, or control them. It is my recommendation that we move forward with this purchase and installation. The low quote is from Decker for a total of \$15,309. The low quote for installation is Red Arrow Electric at a total of \$6,525 for a total cost of \$21,834. A total of \$25,000 was budgeted.

List all Supporting Documentation Attached:

Columbus AC Powered LED Flashing School Signs (Quote)

TraffiCalm School Zone Crossing Flashing LED Ring

Action Requested of Council:

Award of quote from Decker in the amount of \$15,309 and Red Arrow Electric in the amount of \$6,525

Decker Supply Co Inc.
1115 O'Neill Ave
PO Box 8008
Madison WI 53708

QUOTATION

Item #4.

Quote Number: 483097
Quote Date: 07/26/24
Page: 1

Customer Phone: 920 623-5908
Customer Fax:

B
I
L
L

CITY OF COLUMBUS
229 EAST SCHOOL ST
COLUMBUS, WI 53925

S
H
I
P

CITY OF COLUMBUS
229 EAST SCHOOL ST
COLUMBUS, WI 53925

ATTN: TROY

Entered By: JOSH
Location:
Account Cd: COLUMCWI
Salesperson: 7250

RFQ Number:
Ship Via: JOSH DEL
Taxable: Y
Pmt Terms: NET 30

Line	Order Qty	Part Number	Description	Price	UM	Ext Price	Est Ship
1	9.00	M75-SA300-CTLA	AC POWERED INTELLIGENT SIGN CONTROLLER - COMMUNICATES & COMMANDS TC COLLABORATORS, WI-FI & MESH NET	\$1,044.0000	EA	\$9,396.00	11/12/24
2	9.00	M75-R3030-BA45	SIGNALERT 30" FLASHER RING, PENTAGON, AMBER LED'S	\$604.0000	EA	\$5,436.00	11/12/24
3	9.00	S1-1 S8FG30PN	SCHOOL ADVANCE (SYMBOL) 30" X 30" DG/CS .080 BLK/FLYG - FREIGHT INCLUDED - SALESPERSON: JOSH	\$53.0000	EA	\$477.00	11/12/24

Thank you for the opportunity
of quoting.

Prices are good for 45 days
from quotation date.

Subtotal: \$15,309.00
Sales Tax: \$0.00
Freight: \$0.00
Total: \$15,309.00

School Crossing LED Ring (S1-1)

FLASHING SIGN SYSTEM



SCHOOL CROSSING LED RING (S1-1)

Designed to enhance existing road signage. Engineered to provide ease of installation, unmistakable visibility under any conditions, and intuitive driver calming beyond that of just reflective sheeting.

TrafficCalm is unmatched in our dedication to advancing road safety. Our Flashing Sign Systems provide clear and proven modernized traffic signs that remain fully compliant with the Federal Highway Administration [FHWA] Manual on Uniform Traffic Control Devices [MUTCD].

TrafficCalm's Flashing Sign Systems offer scheduled, radar activated or 24/7 operation, AC or solar power, hassle-free install, retrofit design, and wireless communication features.

FEATURES

Highly Visible LED Warning Signs

TrafficCalm fully outlines the shape of the sign, with the most LEDs on the market, for a bright, visible sign in any environmental condition.

Retrofittable LED Rings

Utilize existing signage and add our LED sign rings for a more cost-effective solution

Ruggedized Electronics

All electronics, radios, and LEDs are fully potted and environmentally sealed. The entire pole with the sign, controller, solar panels and batteries can be fully submerged and still operate.

Ease of Installation

The ease of installation allows for quick setup on any existing sign post.

100% MUTCD Compliant

The MUTCD allows LEDs to enhance standard highway warning and regulatory signs and to outline either the sign itself or the words and symbols on the sign. MUTCD specifications indicate that; "If used, the LEDs shall be the same color as the sign legend, border, or background. If flashed, all LED units on an installation shall flash simultaneously at a rate of more than 50 and less than 60 times per minute." TrafficCalm® Systems are fully compliant.

Made in the USA

TrafficCalm® Flashing Sign Systems are manufactured in the USA in an ISO 9001:2015 certified facility, meeting and exceeding industry and state testing requirements. TrafficCalm® signs are unmatched in durability, brightness, accuracy, and ease of installation and use. Build America/Buy America Compliant.

TRAFFICALM.COM



SPECIFICATIONS

ILLUMINATION

LEDs configured within the sign itself (fully MUTCD compliant design)

LED Pitch: .35" (.89 cm) (on centers) within the cluster

4-LED Cluster Pitch: 6 in (15.24 cm) (on center)

Amber LEDs with 15° Viewing Angle

COMPATIBILITY

Integrates with all Trafficalm SA300 Controllers and Collaborators and can be push button, speed (radar), time clock or sensor activated

CONSTRUCTION

14 gauge 5052 aluminum construction

Individually lensed LEDs recessed behind faceplate

ENVIRONMENTAL

NEMA 4X Enclosure

Potted electronics (hermetically sealed)

-40° F to +140° F operating range (-40° C to +60° C)

SERVICE and WARRANTY

5 year limited warranty

Unlimited tech support from US based factory technicians

DETAILS

PHYSICAL DESCRIPTION

Available Sizes: 30" x 30" (76.2 cm x 76.2 cm) and 36" x 36" (91.4 cm x 91.4 cm)

Retrofits to any existing School (S1-1) sign manufactured to MUTCD requirements of corresponding size

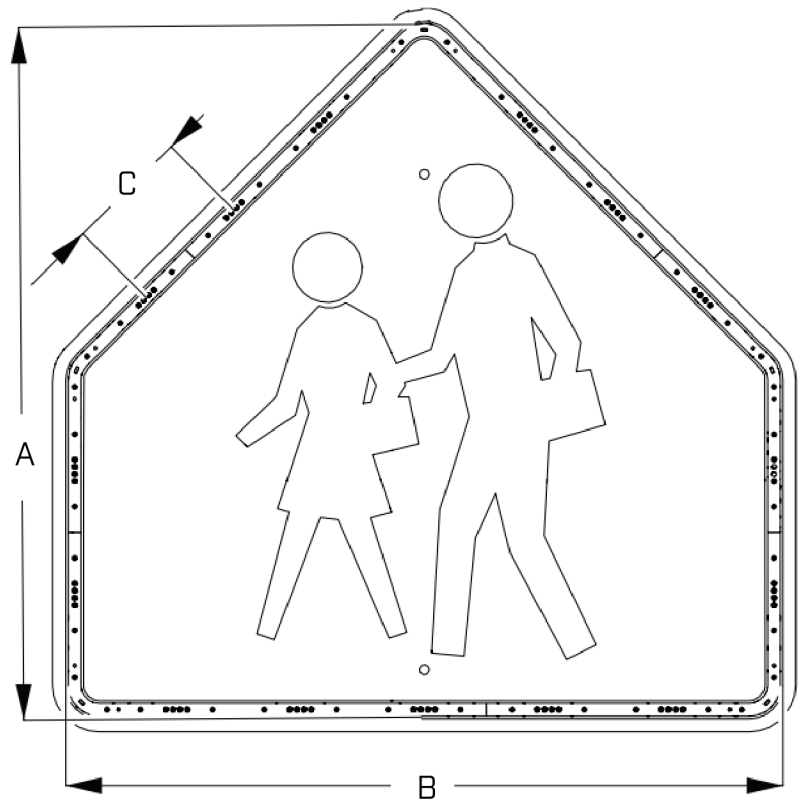
Mounting: All LED hardware mounted within the printed border of the sign. Mounted either with adhesive backing or included self tapping screws. Rivets may be utilized to improve tamper resistance

MUTCD compliant LED placement and usage

10ft (3 m) single cable extension to reach Controller or Collaborator

Ring can be factory installed to a new static sign, per the available part numbers shown below

This item can ship as a kit that can be mounted to a new or existing sign
OR a complete system with sign



MUTCD Sign Size	Part Number	Ring Height [A]	Ring Width [B]	LED Pitch	LED Group offset [C]	LED Count	Light Output [candela]	Power [Amps]
30x30	M75-R3030-BA45	29"/73.7cm	29"/73.7cm	.35"/.89cm	6"/15cm	56	109,200	.336
36x36	M75-R3636-BA45	35"/88.9cm	35"/88.9cm	.35"/.89cm	6"/15cm	60	117,000	.360



Agenda Item Report

Meeting Type: Special Committee of the Whole

Meeting Date: November 19, 2024

Item Title: PROJ. ID 3060-00-24, Parcel 10 – STH 073, Columbia County

Submitted By: Matt Amundson, Administrator

Detailed Description of Subject Matter: The City of Columbus has received notification from TerraVenture Advisors, LLC that Parcel 10 in the State Highway 73, Ludington Street Project is in the right of way plat. Originally, this parcel was not deemed necessary to acquire as it was city owned, but according to WisDOT LPA coordinators, since the parcel is on the plat, it still needs to follow other acquisition procedures. In order to certify the project, they need the City to complete a resolution indicating that the City understands that they are waiving their right to compensation. They are wishing to have all documents completed by December 1, 2024 in order to keep their timeline.

It should be noted that, since the City of Columbus is noted as a property owner along this project route, the City does have the right to compensation and can receive reimbursement from the State. By signing the Donation-Waiver of Appraisal form and completing the resolution, the City is waiving its right to compensation.

List all Supporting Documentation Attached:

Donation – Waiver of Appraisal Recommendation and Approval, with Legal Description & Statement to Construction Engineer

Project 3060-00-24 Plat Title Sheet

Resolution 12-24

Action Requested of Council: Approval of Resolution 12-24

November 7, 2024

CITY OF COLUMBUS
105 N. DICKASON BLVD
COLUMBUS, WI 53925

Project: ID 3060-00-24, Parcel No. 10
C COLUMBUS, LUDINGTON STREET
STH - 073, Columbia County

As part of this project, the City of Columbus was listed as a property owner on the right-of-way plat. However, since this was an LPA project, an offer was not officially made to the City of Columbus. WisDOT has determined that at a minimum, the City of Columbus would need to sign a Donation-Waiver of Appraisal document and the Statement to Construction Engineer form.

We will also need a resolution from the City of Columbus. I'm hoping the resolution can be approved at the next City Council or a special session to get this completed. We are hoping to get the documents prior to December 1 if possible. If we cannot get the documents by the end of the year, construction may be delayed.

It should be noted that, since the City of Columbus is noted as a property owner along this project route, the City does have the right to compensation and can receive reimbursement from the State. By signing the Donation-Waiver of Appraisal form and completing the resolution, you are waiving your right to compensation.

I sincerely apologize for the lateness of this decision. If you have questions, please reach out to me at (608) 609-8821 or through email at teri@tva-llc.com.

Sincerely,

TerraVenture Advisors, LLC



Teri Weil
Real Estate Specialist

Enclosures

**DONATION - WAIVER OF APPRAISAL
RECOMMENDATION AND APPROVAL**

RE1896 01/2023 Ch. 32 Wis. Stats.

City of C

Item #5.

Owner
City of Columbus

Acres/sq. ft. required
0.00 Acres

Interest required
995.00 sq. ft. of Temporary Limited Easement (TLE)

The undersigned owner(s) of the above lands declare an intent to donate said lands.

Having been fully informed of the right to have the property appraised and to receive just compensation based upon an appraisal, the undersigned further state that the decision to donate said lands was made without any undue influence or coercive action of any nature, and that the right to an appraisal and to just compensation is hereby waived.

It is intended that the instrument of conveyance will be executed upon presentation by City of Columbus agents or representatives.

Owner Signature Date

City of Columbus
Print Name

Owner Signature Date

Print Name

APPROVING AUTHORITY RECOMMENDATION:

Agent Signature Date

Print Name

APPROVING AUTHORITY APPROVAL:

Management Signature Date

Print Name

Project
3060-00-24

County
Columbia

Parcel
10

LEGAL DESCRIPTION

Parcel 10 of Transportation Project Plat 3060-00-24 – 4.03 recorded in volume TPP-E of Transportation Project Plats, Page 65, as Document No. 966824, recorded in Columbia County, Wisconsin.

Property interests and rights of said Parcel 10 consist of:

Temporary limited easement

Parcel 10 of Transportation Project Plat 3060-00-24 – 4.04 recorded in volume TPP-E of Transportation Project Plats, Page 66, as Document No. 966825, recorded in Columbia County, Wisconsin.

Property interests and rights of said Parcel 10 consist of:

Temporary limited easement

Parcel 10 of Transportation Project Plat 3060-00-24 – 4.07 recorded in volume TPP-E of Transportation Project Plats, Page 67, as Document No. 966828, recorded in Columbia County, Wisconsin.

Property interests and rights of said Parcel 10 consist of:

Temporary limited easement

STATEMENT TO CONSTRUCTION ENGINEER

RE1528 01/2023 s. 84.09 Wis. Stats.

Copies to: project engineer and owner

Owner Name(s) City of Columbus	Property Address 1049 Park Avenue , WI Mailing Address 105 N. Dickason Blvd, Columbus, WI 53925	Area code - phone Home: Cell: Work: Email:
Tenant, if any	Property Address 1049 Park Avenue , WI Mailing Address	Area code - phone Home: Cell: Work: Email:

Commitments made (fences, driveways, trees, drainage or other items):

Other matters of interest and owner concerns:

_____ Property Owner Signature	_____ Date	_____ Negotiator Signature	_____ Date
_____ Property Owner Signature	_____ Date	Theresa L Weil Print Negotiator Name	

Commitments Approved:

_____ Approving Authority Signature and Title	_____ Date
_____ Print Approving Authority Name	

Project ID
3060-00-24

County
Columbia

Parcel No.
10



STATE OF WISCONSIN
CITY OF COLUMBUS
TRANSPORTATION PROJECT PLAT TITLE SHEET
3060-00-24
LUDINGTON STREET
FAITH DRIVE TO MIDDLETON STREET
STH 73
COLUMBIA COUNTY

THE NOTES, CONVENTIONAL SIGNS, AND ABBREVIATIONS ARE ASSOCIATED WITH EACH TRANSPORTATION PROJECT PLAT FOR PROJECT 3060-00-24

NOTES:
POSITIONS SHOWN ON THIS PLAT ARE WISCONSIN COORDINATE REFERENCE SYSTEM COORDINATES (WISCRS), COLUMBIA COUNTY, NAD83 (2011) IN US SURVEY FEET. VALUES SHOWN ARE GRID COORDINATES, GRID BEARINGS, AND GRID DISTANCES. GRID DISTANCES MAY BE USED AS GROUND DISTANCES.

ALL NEW RIGHT-OF-WAY MONUMENTS WILL BE TYPE 2 (TYPICALLY 3/4" X 24" IRON PIPES), UNLESS OTHERWISE NOTED, AND WILL BE PLACED PRIOR TO THE COMPLETION OF THE PROJECT.

ALL RIGHT-OF-WAY LINES DEPICTED IN THE NON-ACQUISITION AREAS ARE INTENDED TO RE-ESTABLISH EXISTING RIGHT-OF-WAY LINES AS DETERMINED FROM PREVIOUS PROJECTS, OTHER RECORDED DOCUMENTS, CENTERLINE OF EXISTING PAVEMENTS AND/OR EXISTING OCCUPATIONAL LINES.

RIGHT-OF-WAY BOUNDARIES ARE DEFINED WITH COURSES OF THE PERIMETER OF THE HIGHWAY LANDS REFERENCED TO THE U.S. PUBLIC LAND SURVEY SYSTEM OR OTHER "SURVEYS" OF PUBLIC RECORD.

DIMENSIONING FOR THE NEW RIGHT-OF-WAY IS MEASURED ALONG AND PERPENDICULAR TO THE NEW REFERENCE LINES.

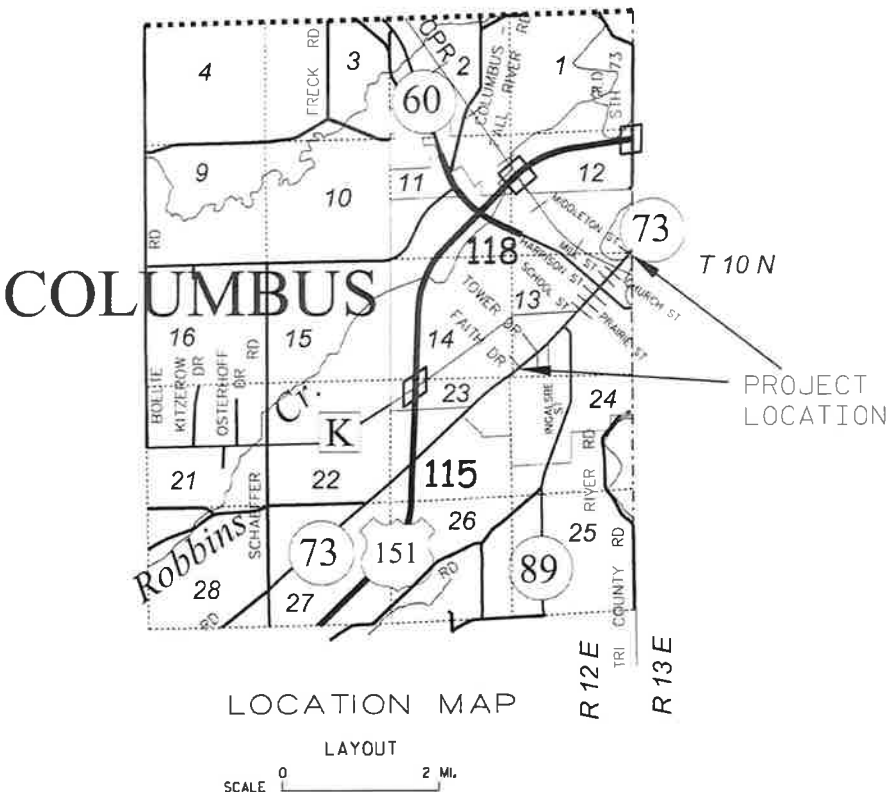
A TEMPORARY LIMITED EASEMENT (TLE) IS A RIGHT FOR CONSTRUCTION PURPOSES, AS DEFINED HEREIN, INCLUDING THE RIGHT TO OPERATE NECESSARY EQUIPMENT THEREON, THE RIGHT OF INGRESS AND EGRESS, AS LONG AS REQUIRED FOR SUCH PUBLIC PURPOSE, INCLUDING THE RIGHT TO PRESERVE, PROTECT, REMOVE, OR PLANT THEREON ANY VEGETATION THAT THE HIGHWAY AUTHORITIES MAY DEEM DESIRABLE. ALL (TLEs) ON THIS PLAT EXPIRE AT THE COMPLETION OF THE CONSTRUCTION PROJECT FOR WHICH THIS INSTRUMENT IS GIVEN.

PROPERTY LINES SHOWN ON THIS PLAT FOR PROPERTIES BEING IMPACTED ARE DRAWN FROM DATA DERIVED FROM FILED/RECORDED MAPS AND DOCUMENTS OF PUBLIC RECORD. THIS PLAT MAY NOT BE A TRUE REPRESENTATION OF EXISTING PROPERTY LINES, EXCLUDING RIGHT-OF-WAY, AND SHOULD NOT BE USED AS A SUBSTITUTE FOR AN ACCURATE FIELD SURVEY.

FOR THE CURRENT ACCESS/DRIVEWAY INFORMATION, CONTACT THE CITY OF COLUMBUS.

PARCEL AND UTILITY IDENTIFICATION NUMBERS MAY NOT POINT TO ALL AREAS OF ACQUISITION, AS NOTED ON THE TPP DETAIL PAGES.

INFORMATION FOR THE BASIS OF EXISTING HIGHWAY RIGHT-OF-WAY POINTS OF REFERENCE AND ACCESS CONTROL ARE LISTED ON THE TPP DETAIL PAGES.



CONVENTIONAL SYMBOLS

SECTION LINE
QUARTER LINE
SIXTEENTH LINE
NEW REFERENCE LINE
NEW R/W LINE
EXISTING R/W LINE
PROPERTY LINE
LOT, TIE, AND OTHER MINOR LINES
SLOPE INTERCEPT
CORPORATE LIMITS
UNDERGROUND FACILITY (COMMUNICATIONS, ELECTRIC, ETC.)
NEW R/W (FEE OR HE) (MATCHING VARIES BY OWNER)
TEMP. LIMITED EASEMENT AREA
EASEMENT AREA (PERMANENT LIMITED OR RESTRICTED DEVELOPMENT)
TRANSMISSION STRUCTURES
BUILDING TO BE REMOVED
BRIDGE
CULVERT
PARALLEL OFFSETS

CONVENTIONAL ABBREVIATIONS

ACCESS RIGHTS	AR	POINT OF INTERSECTION	PI
ACRES	AC	PROPERTY LINE	PL
AHEAD	AH	RECORDED AS (100')	
ALUMINUM	ALUM	REEL / IMAGE	R/I
AND OTHERS	ET AL	REFERENCE LINE	R/L
BACK	BK	REMAINING	REM
BLOCK	BLK	RESTRICTIVE DEVELOPMENT EASEMENT	RDE
CENTERLINE	C/L	RIGHT	RT
CERTIFIED SURVEY MAP	CSM	RIGHT OF WAY	R/W
CONCRETE	CONC	SECTION	SEC
COUNTY	CO	SEPTIC VENT	SEPV
COUNTY TRUNK HIGHWAY	CTH	SQUARE FEET	SF
DISTANCE	DIST	STATE TRUNK HIGHWAY	STH
CORNER	COR	STATION	STA
DOCUMENT NUMBER	DOC	TELEPHONE PEDESTAL	TP
EASEMENT	EASE	TEMPORARY LIMITED EASEMENT	TLE
EXISTING	EX	TRANSPORTATION PROJECT PLAT	TPP
GAS VALVE	GV	UNITED STATES HIGHWAY	USH
GRID NORTH	GN	VOLUME	V
HIGHWAY EASEMENT	HE		
IDENTIFICATION	ID		
LAND CONTRACT	LC		
LEFT	LT		
MONUMENT	MON		
NATIONAL GEODETIC SURVEY	NGS		
NUMBER	NO		
OUTLOT	OL		
PAGE	P		
POINT OF TANGENCY	PT		
PERMANENT LIMITED EASEMENT	PLE		
POINT OF BEGINNING	POB		
POINT OF CURVATURE	PC		
POINT OF COMPOUND CURVE	PCC		

CONVENTIONAL ABBREVIATIONS			
ACCESS RIGHTS	AR	POINT OF INTERSECTION	PI
ACRES	AC	PROPERTY LINE	PL
AHEAD	AH	RECORDED AS (100')	
ALUMINUM	ALUM	REEL / IMAGE	R/I
AND OTHERS	ET AL	REFERENCE LINE	R/L
BACK	BK	REMAINING	REM
BLOCK	BLK	RESTRICTIVE DEVELOPMENT EASEMENT	RDE
CENTERLINE	C/L	RIGHT	RT
CERTIFIED SURVEY MAP	CSM	RIGHT OF WAY	R/W
CONCRETE	CONC	SECTION	SEC
COUNTY	CO	SEPTIC VENT	SEPV
COUNTY TRUNK HIGHWAY	CTH	SQUARE FEET	SF
DISTANCE	DIST	STATE TRUNK HIGHWAY	STH
CORNER	COR	STATION	STA
DOCUMENT NUMBER	DOC	TELEPHONE PEDESTAL	TP
EASEMENT	EASE	TEMPORARY LIMITED EASEMENT	TLE
EXISTING	EX	TRANSPORTATION PROJECT PLAT	TPP
GAS VALVE	GV	UNITED STATES HIGHWAY	USH
GRID NORTH	GN	VOLUME	V
HIGHWAY EASEMENT	HE		
IDENTIFICATION	ID		
LAND CONTRACT	LC		
LEFT	LT		
MONUMENT	MON		
NATIONAL GEODETIC SURVEY	NGS		
NUMBER	NO		
OUTLOT	OL		
PAGE	P		
POINT OF TANGENCY	PT		
PERMANENT LIMITED EASEMENT	PLE		
POINT OF BEGINNING	POB		
POINT OF CURVATURE	PC		
POINT OF COMPOUND CURVE	PCC		

CURVE DATA			
LONG CHORD	LCH		
LONG CHORD BEARING	LCB		
RADIUS	R		
DEGREE OF CURVE	D		
CENTRAL ANGLE	Δ / DELTA		
LENGTH OF CURVE	L		
TANGENT	T		
DIRECTION AHEAD	DA		
DIRECTION BACK	DB		

CONVENTIONAL UTILITY SYMBOLS	
—	WATER
—	GAS
—	TELEPHONE
—	OVERHEAD
—	TRANSMISSION LINES
—	ELECTRIC
—	CABLE TELEVISION
—	FIBER OPTIC
—	WET TARY SLOPE
—	STORM SEWER

TRANSPORTATION PROJECT PLAT NO: 3060-00-24 - 4.03

THAT PART OF THE SE 1/4 AND SW 1/4 OF THE SW 1/4, SECTION 13, TOWNSHIP 10 NORTH, RANGE 12 EAST, IN THE CITY OF COLUMBUS, COLUMBIA COUNTY, WISCONSIN.

RELOCATION ORDER STH 73, FAITH DRIVE TO MIDDLETON STREET, COLUMBIA COUNTY

TO PROPERLY ESTABLISH, LAY OUT, WIDEN, ENLARGE, EXTEND, CONSTRUCT, RECONSTRUCT, IMPROVE, OR MAINTAIN A PORTION OF THE HIGHWAY DESIGNATED ABOVE, THE CITY OF COLUMBUS DEEMS IT NECESSARY TO RELOCATE OR CHANGE SAID HIGHWAY AND ACQUIRE CERTAIN LANDS AND INTERESTS OR RIGHTS IN LANDS FOR THE ABOVE-NAMED PROJECT. TO EFFECT THIS CHANGE, PURSUANT TO AUTHORITY GRANTED UNDER SUBSECTIONS 62.22, WISCONSIN STATUTES, THE CITY OF COLUMBUS HEREBY ORDERS THAT:

1. THAT PORTION OF SAID HIGHWAY AS SHOWN ON THIS PLAT IS LAID OUT AND ESTABLISHED TO THE LINES AND WIDTHS AS SO SHOWN FOR THE ABOVE-NAMED PROJECT.
2. THE LANDS OR INTERESTS OR RIGHTS IN LANDS AS SHOWN ON THIS PLAT ARE REQUIRED BY THE CITY FOR THE ABOVE PROJECT AND SHALL BE ACQUIRED IN THE NAME OF THE CITY OF COLUMBUS, PURSUANT TO THE PROVISIONS OF SUBSECTION 62.22, WISCONSIN STATUTES.

NOTES:

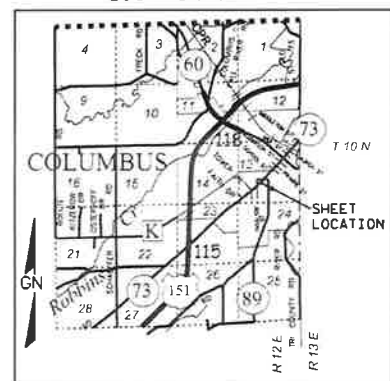
POSITIONS SHOWN ON THIS PLAT ARE WISCONSIN COORDINATE REFERENCE SYSTEM COORDINATES (WISCRS), COLUMBIA COUNTY, NAD83 (2011) IN US SURVEY FEET. VALUES SHOWN ARE GRID COORDINATES, GRID BEARINGS, AND GRID DISTANCES. GRID DISTANCES MAY BE USED AS GROUND DISTANCES.

ALL NEW RIGHT-OF-WAY MONUMENTS WILL BE TYPE 2 (TYPICALLY 1" X 24" IRON PIPES), UNLESS OTHERWISE NOTED, AND WILL BE PLACED PRIOR TO THE COMPLETION OF THE PROJECT.

FOR THE CURRENT ACCESS/DRIVEWAY INFORMATION, CONTACT THE CITY OF COLUMBUS.

REFER TO THE TITLE SHEET, RECORDED AS SHEET 2 OF 2, AS DOCUMENT NO. 966258 FOR ADDITIONAL INFORMATION.

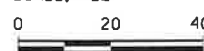
LOCATION MAP



NOT TO SCALE



SCALE, FEET

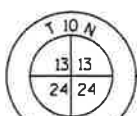
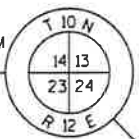


POT	Y	X
76+14.85	318,273.435	653,524.006

HWY	BASIS OF EXISTING R/W	R/W WIDTH	YEAR
STH 73	PROJECT 3061-01-21	66'	1990
STH 73	PROJECT 3061-00-71	66'	1991

SCHEDULE OF LANDS & INTERESTS REQUIRED		OWNERS' NAMES ARE SHOWN FOR REFERENCE PURPOSES ONLY AND ARE SUBJECT TO CHANGE PRIOR TO THE TRANSFER OF LAND AND INTERESTS TO THE CITY.				
PARCEL NUMBER	OWNER	INTERESTS REQUIRED	R/W REQUIRED S.F.			TLE S.F.
			NEW	EXISTING	TOTAL	
7	H.G. & ARLENE D. DELKE	FEE & TLE	-	3,376	3,376	314
8	LEE R. & LOYCE JOY HARDESTY FAMILY TRUST	FEE & TLE	-	1,649	1,649	142
9	CARALYNN M. HILLMER	TLE	-	-	-	333
10	CITY OF COLUMBUS, A MUNICIPAL CORPORATION	TLE	-	-	-	560

COMPUTED FROM WITNESS TIES
Y=317117.461
X=652208.390



FOUND ALUMINUM MONUMENT
Y=317234.744
X=654840.900

DOC # 966824
REGISTER OF DEEDS
COLUMBIA COUNTY
RECORDED ON:
06/20/2023 02:07:31 PM
PAGES: 1
LISA KRINTZ
REGISTER OF DEEDS
REC FEE: 25.00
VOLUME: TPP-E PAGE: 65
ELECTRONICALLY RETURNED TO SENDER

RESERVED FOR REGISTER OF DEEDS
PROJECT NUMBER 3060-00-24 - 4.03
AMENDMENT NO:
SHEET 1 OF 1

RW STATION & OFFSET TABLE			
300	75+86.45	33.00'	RT
301	75+55.49	33.00'	RT
302	75+00.30	33.00'	LT
303	78+56.10	33.00'	LT
304	78+67.11	33.00'	RT

TLE STATION & OFFSET TABLE			
T350	75+63.00	33.00'	LT
T351	75+63.00	41.00'	LT
T352	76+20.00	41.00'	LT
T353	76+20.00	33.00'	LT
T354	77+90.00	33.00'	LT
T355	77+90.00	42.00'	LT
T356	78+27.00	42.00'	LT
T357	78+27.00	33.00'	LT
T358	78+31.00	33.00'	RT
T359	78+31.00	38.00'	RT
T360	77+85.00	38.00'	RT
T361	77+85.00	33.00'	RT
T362	76+26.00	33.00'	RT
T363	76+26.00	38.00'	RT
T364	75+60.00	38.00'	RT
T365	75+60.00	33.00'	RT

R/W COURSE TABLE			
300-301	S49°14'57"W	30.96'	
301-R/L	N40°45'03"W	33.00'	
R/L-R/L	S49°14'57"W	51.66'	
R/L-302	N46°51'23"W	33.18'	
302-303	N49°14'57"E	355.80'	
303-R/L	S41°25'03"E	33.00'	
R/L-R/L	N49°14'57"E	10.63'	
R/L-304	S40°45'03"E	33.00'	
304-300	S49°14'57"W	280.66'	

raSmith
CREATIVITY BEYOND ENGINEERING

I, MICHAEL J. RATZBURG, PROFESSIONAL LAND SURVEYOR, HEREBY CERTIFY THAT IN FULL COMPLIANCE WITH THE PROVISIONS OF SECTION 84.095 OF THE WISCONSIN STATUTES AND UNDER THE DIRECTION OF THE CITY OF COLUMBUS, I HAVE SURVEYED AND MAPPED THIS TRANSPORTATION PROJECT PLAT AND SUCH PLAT CORRECTLY REPRESENTS ALL EXTERIOR BOUNDARIES OF THE SURVEYED LAND.



SIGNATURE: *[Signature]* DATE: 6/06/2023
PRINT NAME: MICHAEL J. RATZBURG
REGISTRATION NUMBER: S-2236

THIS PLAT AND RELOCATION ORDER ARE APPROVED FOR THE CITY OF COLUMBUS.

SIGNATURE: Patricia Goebel DATE: 6/15/2023
PRINT NAME: PAT GOEBEL, CITY CLERK

TRANSPORTATION PROJECT PLAT NO: 3060-00-24 - 4.04

THAT PART OF OUTLOTS 97, 159 AND 160 OF COLUMBUS OUTLOTS, LOCATED IN THE NW 1/4 OF THE SE 1/4, SECTION 13, TOWNSHIP 10 NORTH, RANGE 12 EAST, IN THE CITY OF COLUMBUS, COLUMBIA COUNTY, WISCONSIN.

RELOCATION ORDER STH 73, FAITH DRIVE TO MIDDLETON STREET, COLUMBIA COUNTY

TO PROPERLY ESTABLISH, LAY OUT, WIDEN, ENLARGE, EXTEND, CONSTRUCT, RECONSTRUCT, IMPROVE, OR MAINTAIN A PORTION OF THE HIGHWAY DESIGNATED ABOVE, THE CITY OF COLUMBUS DEEMS IT NECESSARY TO RELOCATE OR CHANGE SAID HIGHWAY AND ACQUIRE CERTAIN LANDS AND INTERESTS OR RIGHTS IN LANDS FOR THE ABOVE-NAMED PROJECT. TO EFFECT THIS CHANGE, PURSUANT TO AUTHORITY GRANTED UNDER SUBSECTIONS 62.22, WISCONSIN STATUTES, THE CITY OF COLUMBUS HEREBY ORDERS THAT:

1. THAT PORTION OF SAID HIGHWAY AS SHOWN ON THIS PLAT IS LAY OUT AND ESTABLISHED TO THE LINES AND WIDTHS AS SO SHOWN FOR THE ABOVE-NAMED PROJECT.
2. THE LANDS OR INTERESTS OR RIGHTS IN LANDS AS SHOWN ON THIS PLAT ARE REQUIRED BY THE CITY FOR THE ABOVE PROJECT AND SHALL BE ACQUIRED IN THE NAME OF THE CITY OF COLUMBUS, PURSUANT TO THE PROVISIONS OF SUBSECTION 62.22, WISCONSIN STATUTES.

NOTES:

POSITIONS SHOWN ON THIS PLAT ARE WISCONSIN COORDINATE REFERENCE SYSTEM COORDINATES (WISCRS), COLUMBIA COUNTY, NAD83 (2011) IN US SURVEY FEET. VALUES SHOWN ARE GRID COORDINATES, GRID BEARINGS, AND GRID DISTANCES. GRID DISTANCES MAY BE USED AS GROUND DISTANCES.

ALL NEW RIGHT-OF-WAY MONUMENTS WILL BE TYPE 2 (TYPICALLY 1" X 24" IRON PIPES), UNLESS OTHERWISE NOTED, AND WILL BE PLACED PRIOR TO THE COMPLETION OF THE PROJECT.

FOR THE CURRENT ACCESS/DRIVEWAY INFORMATION, CONTACT THE CITY OF COLUMBUS.

REFER TO THE TITLE SHEET, RECORDED AS SHEET 2 OF 2, AS DOCUMENT NO. 96625B FOR ADDITIONAL INFORMATION.

LOCATION MAP



102 AT&T WISCONSIN
NON DESCRIPT
EASEMENT
DOC.510616
V.432, P.89
PARCEL 12

104 CITY OF COLUMBUS -
SANITARY
15' EASEMENT
DOC.543001
V.503, P.61
PARCEL 12



SCALE, FEET

0 20 40

UTILITY INTERESTS REQUIRED		
UTILITY NUMBER	UTILITY OWNER	INTEREST REQUIRED
102	AT&T WISCONSIN	RELEASE OF RIGHTS
104	CITY OF COLUMBUS - SANITARY	RELEASE OF RIGHTS

SCHEDULE OF LANDS & INTERESTS REQUIRED

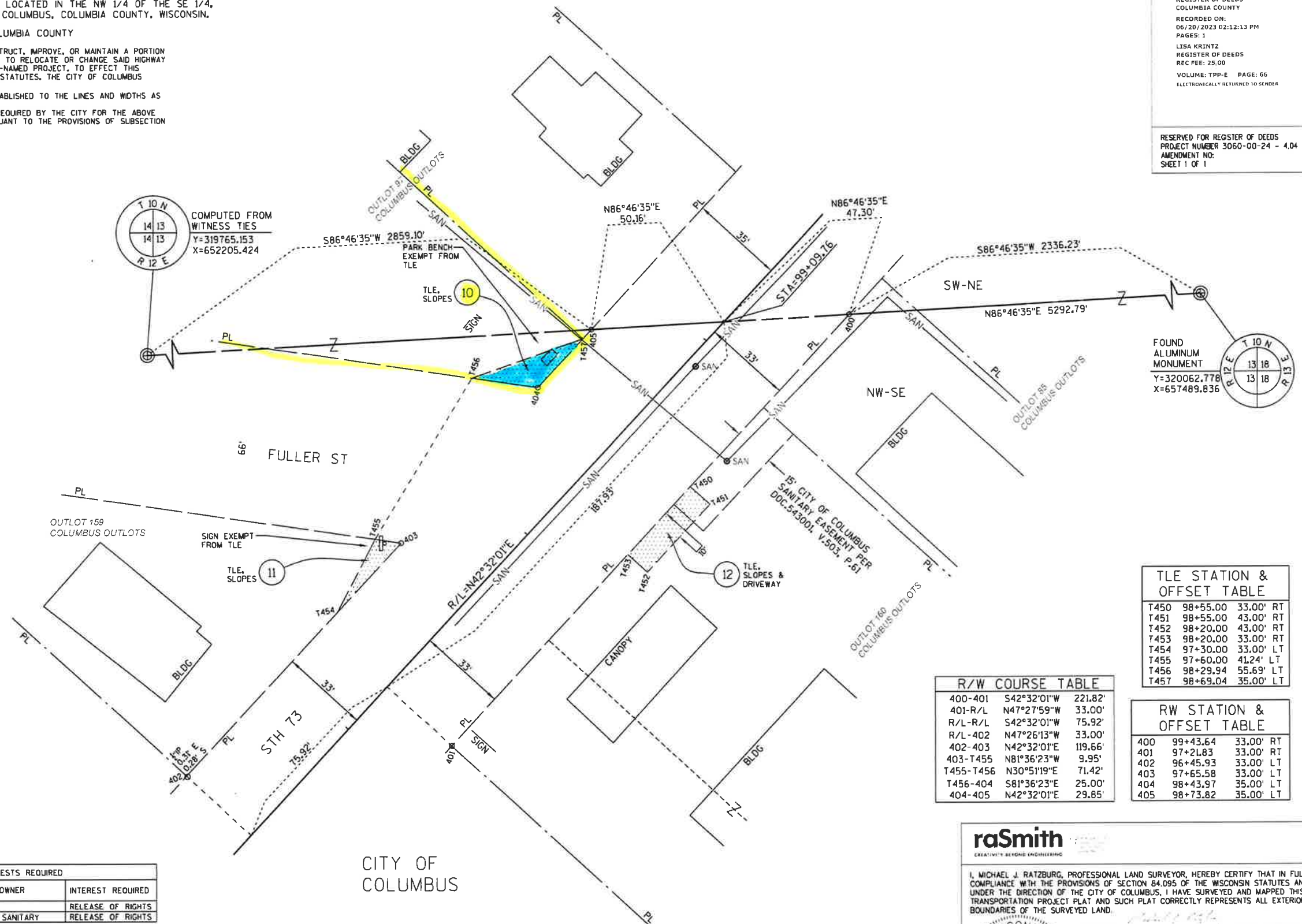
OWNERS' NAMES ARE SHOWN FOR REFERENCE PURPOSES ONLY AND ARE SUBJECT TO CHANGE PRIOR TO THE TRANSFER OF LAND AND INTERESTS TO THE CITY.

PARCEL NUMBER	OWNER	INTERESTS REQUIRED	R/W REQUIRED S.F.			TLE S.F.
			NEW	EXISTING	TOTAL	
10	CITY OF COLUMBUS, A MUNICIPAL CORPORATION	TLE	-	-	-	259
11	DENNIS W. & CLAIRE R. SAMPOLINSKI	TLE	-	-	-	147
12	LANDMARK SERVICES COOPERATIVE	TLE	-	-	-	350

HWY	BASIS OF EXISTING R/W	R/W WIDTH	YEAR
STH 73	PROJECT 3061-00-71	33' & 35'	1991
FULLER ST	BY STATUTE	66'	

POT	Y	X
99+09.76	319,928.747	655,110.082

COMPUTED FROM
WITNESS TIES
Y=319765.153
X=652205.424



DOC # 966825
REGISTER OF DEEDS
COLUMBIA COUNTY
RECORDED ON:
06/20/2023 02:12:13 PM
PAGES: 1
LISA KRINTZ
REGISTER OF DEEDS
REC FEE: 25.00
VOLUME: TPP-E PAGE: 66
ELECTRONICALLY RETURNED TO SENDER

RESERVED FOR REGISTER OF DEEDS
PROJECT NUMBER 3060-00-24 - 4.04
AMENDMENT NO:
SHEET 1 OF 1

FOUND
ALUMINUM
MONUMENT
Y=320062.778
X=657489.836

TLE STATION & OFFSET TABLE

T450	98+55.00	33.00'	RT
T451	98+55.00	43.00'	RT
T452	98+20.00	43.00'	RT
T453	98+20.00	33.00'	RT
T454	97+30.00	33.00'	LT
T455	97+60.00	41.24'	LT
T456	98+29.94	55.69'	LT
T457	98+69.04	35.00'	LT

R/W COURSE TABLE

400-401	S42°32'01"W	221.82'
401-R/L	N47°27'59"W	33.00'
R/L-R/L	S42°32'01"W	75.92'
R/L-402	N47°26'13"W	33.00'
402-403	N42°32'01"E	119.66'
403-T455	N81°36'23"W	9.95'
T455-T456	N30°51'19"E	71.42'
T456-404	S81°36'23"E	25.00'
404-405	N42°32'01"E	29.85'

RW STATION & OFFSET TABLE

400	99+43.64	33.00'	RT
401	97+21.83	33.00'	RT
402	96+45.93	33.00'	LT
403	97+65.58	33.00'	LT
404	98+43.97	35.00'	LT
405	98+73.82	35.00'	LT

raSmith
CREATIVITY BEYOND ENGINEERING

I, MICHAEL J. RATZBURG, PROFESSIONAL LAND SURVEYOR, HEREBY CERTIFY THAT IN FULL COMPLIANCE WITH THE PROVISIONS OF SECTION 84.095 OF THE WISCONSIN STATUTES AND UNDER THE DIRECTION OF THE CITY OF COLUMBUS, I HAVE SURVEYED AND MAPPED THIS TRANSPORTATION PROJECT PLAT AND SUCH PLAT CORRECTLY REPRESENTS ALL EXTERIOR BOUNDARIES OF THE SURVEYED LAND.



SIGNATURE: MICHAEL J. RATZBURG
PRINT NAME: MICHAEL J. RATZBURG
REGISTRATION NUMBER: S-2236

THIS PLAT AND RELOCATION ORDER ARE APPROVED FOR THE CITY OF COLUMBUS.

SIGNATURE: Patricia Goebel
PRINT NAME: PAT GOEBEL, CITY CLERK

TRANSPORTATION PROJECT PLAT NO: 3060-00-24 - 4.07

THAT PART OF LOT 6, BLOCK 6, LOT 10, BLOCK 7, AND LOT 1, BLOCK 8, ORIGINAL PLAT OF COLUMBUS, LOCATED IN THE SW 1/4 OF THE NE 1/4, SECTION 13, TOWNSHIP 10 NORTH, RANGE 12 EAST, IN THE CITY OF COLUMBUS, COLUMBIA COUNTY, WISCONSIN.

RELOCATION ORDER STH 73, FAITH DRIVE TO MIDDLETON STREET, COLUMBIA COUNTY

TO PROPERLY ESTABLISH, LAY OUT, WIDEN, ENLARGE, EXTEND, CONSTRUCT, RECONSTRUCT, IMPROVE, OR MAINTAIN A PORTION OF THE HIGHWAY DESIGNATED ABOVE, THE CITY OF COLUMBUS DEEMS IT NECESSARY TO RELOCATE OR CHANGE SAID HIGHWAY AND ACQUIRE CERTAIN LANDS AND INTERESTS OR RIGHTS IN LANDS FOR THE ABOVE-NAMED PROJECT. TO EFFECT THIS CHANGE, PURSUANT TO AUTHORITY GRANTED UNDER SUBSECTIONS 62.22, WISCONSIN STATUTES, THE CITY OF COLUMBUS HEREBY ORDERS THAT:

1. THAT PORTION OF SAID HIGHWAY AS SHOWN ON THIS PLAT IS LAID OUT AND ESTABLISHED TO THE LINES AND WIDTHS AS SO SHOWN FOR THE ABOVE-NAMED PROJECT.
2. THE LANDS OR INTERESTS OR RIGHTS IN LANDS AS SHOWN ON THIS PLAT ARE REQUIRED BY THE CITY FOR THE ABOVE PROJECT AND SHALL BE ACQUIRED IN THE NAME OF THE CITY OF COLUMBUS, PURSUANT TO THE PROVISIONS OF SUBSECTION 62.22, WISCONSIN STATUTES.

RW STATION & OFFSET TABLE

700	109+27.59	35.00'	RT
701	108+67.59	35.00'	RT
702	108+67.14	35.00'	LT
703	109+27.14	35.00'	LT
704	109+97.14	35.00'	LT
705	110+57.14	35.00'	LT
706	110+57.59	35.00'	RT
707	109+97.59	35.00'	RT

TLE STATION & OFFSET TABLE

7750	109+27.57	50.00'	RT
7751	109+17.57	50.00'	RT
7752	109+17.59	35.00'	RT
7753	109+12.00	35.00'	LT
7754	109+27.11	45.00'	LT
7755	110+12.59	35.00'	RT
7756	110+12.59	40.00'	RT
7757	110+02.59	40.00'	RT
7758	110+02.58	45.01'	RT
7759	109+97.58	45.00'	RT

R/W COURSE TABLE

7750-700	N48°00'04"W	15.00'
700-701	S41°55'16"W	60.00'
701-R/L	N48°27'10"W	35.00'
R/L-702	N48°27'10"W	35.00'
702-703	N41°55'16"E	60.00'
703-7754	N48°12'27"W	10.00'
7754-704	N50°02'55"E	70.73'
704-705	N41°55'16"E	60.00'
705-R/L	S48°27'10"E	35.00'
R/L-706	S48°27'10"E	35.00'
706-707	S41°55'16"W	60.00'
707-7759	S48°00'04"E	10.00'
7759-7750	S37°50'09"W	70.19'

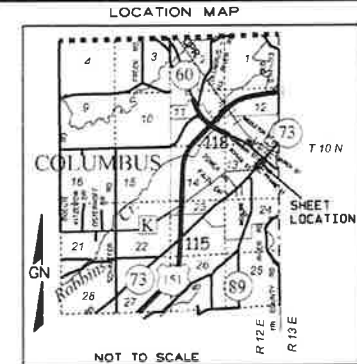
NOTES:

POSITIONS SHOWN ON THIS PLAT ARE WISCONSIN COORDINATE REFERENCE SYSTEM COORDINATES (WISCRS), COLUMBIA COUNTY, NAD83 (2011) IN US SURVEY FEET. VALUES SHOWN ARE GRID COORDINATES, GRID BEARINGS, AND GRID DISTANCES. GRID DISTANCES MAY BE USED AS GROUND DISTANCES.

ALL NEW RIGHT-OF-WAY MONUMENTS WILL BE TYPE 2 (TYPICALLY 1" X 24" IRON PIPES), UNLESS OTHERWISE NOTED, AND WILL BE PLACED PRIOR TO THE COMPLETION OF THE PROJECT.

FOR THE CURRENT ACCESS/DRIVEWAY INFORMATION, CONTACT THE CITY OF COLUMBUS.

REFER TO THE TITLE SHEET, RECORDED AS SHEET 2 OF 2, AS DOCUMENT NO. 966258 FOR ADDITIONAL INFORMATION.



DOC # 966828
REGISTER OF DEEDS
COLUMBIA COUNTY
RECORDED ON:
06/20/2023 02:39:30 PM
PAGES: 1
LISA KRINTZ
REGISTER OF DEEDS
REC FEE: 25.00
VOLUME: TPP-E PAGE: 67
ELECTRONICALLY RETURNED TO SENDER

RESERVED FOR REGISTER OF DEEDS
PROJECT NUMBER 3060-00-24 - 4.07
AMENDMENT NO:
SHEET 1 OF 1



SCALE, FEET
0 20 40

POT	Y	X
109+27.64	320,684.067	655,792.393

HWY	BASIS OF EXISTING R/W	R/W WIDTH	YEAR
STH 73	LUDINGTON'S FIRST EXTENSION OF THE CITY OF COLUMBUS	70'	1849
STH 73	ORIGINAL PLAT OF COLUMBUS	70'	
STH 73	PROJECT 3061-00-71	70'	1991
PRAIRIE ST	ORIGINAL PLAT OF COLUMBUS	70'	
PRAIRIE ST	PROJECT 3061-00-71	70'	1991
HARRISON ST	ORIGINAL PLAT OF COLUMBUS	70'	
HARRISON ST	PROJECT 3061-00-71	70'	1991

SCHEDULE OF LANDS & INTERESTS REQUIRED		OWNERS' NAMES ARE SHOWN FOR REFERENCE PURPOSES ONLY AND ARE SUBJECT TO CHANGE PRIOR TO THE TRANSFER OF LAND AND INTERESTS TO THE CITY.			
PARCEL NUMBER	OWNER	INTERESTS REQUIRED	R/W REQUIRED S.F.		TLE S.F.
			NEW	EXISTING	TOTAL
10	CITY OF COLUMBUS	TLE	-	-	176
21	THEODORE J. & BETTY L. LONG	TLE	-	-	150

COMPUTED FROM
WITNESS TIES
Y=319765.153
X=652205.424

FOUND
ALUMINUM
MONUMENT
Y=320062.778
X=657489.836

raSmith
CREATIVITY'S BEYOND ENGINEERING

I, MICHAEL J. RATZBURG, PROFESSIONAL LAND SURVEYOR, HEREBY CERTIFY THAT IN FULL COMPLIANCE WITH THE PROVISIONS OF SECTION 84.095 OF THE WISCONSIN STATUTES AND UNDER THE DIRECTION OF THE CITY OF COLUMBUS, I HAVE SURVEYED AND MAPPED THIS TRANSPORTATION PROJECT PLAT AND SUCH PLAT CORRECTLY REPRESENTS ALL EXTERIOR BOUNDARIES OF THE SURVEYED LAND.

WISCONSIN
MICHAEL J. RATZBURG
S-2236
WAUKESHA, WI
LAND SURVEYOR

SIGNATURE:
PRINT NAME: MICHAEL J. RATZBURG
REGISTRATION NUMBER: S-2236
DATE: 6/08/2023
THIS PLAT AND RELOCATION ORDER ARE APPROVED FOR THE CITY OF COLUMBUS.
SIGNATURE: Patricia Goebel
PRINT NAME: PAT GOEBEL, CITY CLERK
DATE: 6/15/2023

RESOLUTION NO. 12 -24

A RESOLUTION TO GRANT A PERMANENT LIMITED EASEMENT FOR PARCEL 10, PLAT OF RIGHT-OF-WAY REQUIRED FOR PROJ. ID 3060-00-24, LUDINGTON STREET; STH-073, COLUMBIA COUNTY

WHEREAS, it has been declared and determined to be in the public interest to acquire certain interests in property necessary for the construction of Ludington Street – STH-073 under the authority of Sec. 62.22, Wisconsin Statutes; and,

WHEREAS, Parcel 10 of that Plat of Right-of-Way Required is owned by the City of Columbus; and

WHEREAS, a Permanent Limited Easement (PLE) as shown on the plans for grading purposes is required on said Parcel 10 to construct the roadway;

NOW, THEREFORE, BE IT RESOLVED, that the necessary PLE on Parcel 10 in accordance with the adopted Plat of Right-of-Way Required is hereby granted.

Adopted this 19th day of November, 2024.

CITY OF COLUMBUS

By: _____
Joseph Hammer, Mayor

By: _____
Susan L. Caine, Clerk

Resolution Published: _____



Agenda Item Report

Meeting Type: Common Council Meeting

Meeting Date: November 19, 2024

Item Title: 2024 Wine Walk Picnic License Application

Submitted By: Susan L. Caine, Clerk

Detailed Description of Subject Matter: The Wine Walk will take place on November 30, 2024 from 12:00 noon until 6:00pm. Participating stops that are not bars must have a Temporary “Class B” Wine License in order to serve wine at this event.

The following participants are stops needing an approved license:

@ease, LLC – 229 N. Ludington Street, #4
 Forward Pharmacy – 100 S. Ludington Street
 Friends of the Columbus Public Library - 251 W. James Street
 Pam’s Wildlife Photography & Friends – 150 N. Ludington Street
 Secret Garden Floral – 158 S. Ludington Street
 The Coffee Garage – 761 W. James Street
 The Columbus Area Historical Society – 152 W. James Street
 The Old Garage Barbershop – 159 E. James Street
 Wellspring - 110 S. Ludington Street

List all Supporting Documentation Attached:

Temporary Alcohol Beverage License Application for Columbus Area Chamber of Commerce 2024 Wine Walk event.

Action Requested of Council:

Approval of Temporary “Class B” Wine Licenses to the above-named participants.

Temporary Alcohol Beverage License

License(s) Requested	Fees	
<input checked="" type="checkbox"/> Temporary "Class B" Wine <input type="checkbox"/> Temporary Class "B" Beer	License Fees	\$ 90.00
	Background Check	\$
	Total Fees	\$ 90.00

Part A: Organization Information		
1. Organization Name Columbus Area Chamber of Commerce		
2. Organization Permanent Address 100 S. Ludington St.		
3. City Columbus	4. State WI	5. Zip Code 53925
6. Mailing Address (if different from permanent address)		
7. FEIN 39-6127437	8. Date of Organization/Incorporation	9. State of Organization/Incorporation Wisconsin
10. Phone (920) 623-3699	11. Email info@columbuswischamber.news	
12. Organization type (check one) <input type="checkbox"/> Bona Fide Club <input type="checkbox"/> Church <input type="checkbox"/> Fair Association/Agricultural Society <input type="checkbox"/> Veteran's Organization <input type="checkbox"/> Lodge/Society <input checked="" type="checkbox"/> Chamber of Commerce or similar Civic or Trade Organization under ch. 181, Wis. Stats.		
13. Is this organization required to hold a Wisconsin Seller's permit? <input type="checkbox"/> Yes <input checked="" type="checkbox"/> No		
14. Wisconsin Seller's Permit Number (if applicable)		

Part B: Individual Information			
List the name, title, and phone number for all officers, directors, and agent of the organization. Include an Individual Questionnaire (Form AB-100) for each person listed below. Attach additional sheets if necessary. Corporations must also include Alcohol Beverage Appointment of Agent (Form AB-101).			
Last Name	First Name	Title	Phone
Nichols	Katherine	President	(608) 669-2445
Kempfer	Tommy	Vice President	
Walker	Patti	Treasurer	(920) 285-4107
Milbourne	J.D.	Secretary	608-957-6080

Continued →

Part C: Event Information


1. Name of Event (if applicable) Wine Walk 2024 - Various Locations, please see attached list.			
2. Dates of Operation November 30, 2024		3. Hours of Operation noon - 6pm	
4. Premises Address			
5. City		6. State	7. Zip Code
8. County	9. Governing Municipality <input type="checkbox"/> City <input type="checkbox"/> Town <input type="checkbox"/> Village of: _____		10. Aldermanic District
11. Organizer of Event (if not the named applicant)		12. Email and/or Phone Number for Organizer of Event	
13. Organizer Website		14. Event Website	
15. Premises Description - Describe the building or buildings and any outside areas where alcohol beverages and records are sold, stored, or consumed, and related records are kept. Describe all rooms within the building, including living quarters. Authorized alcohol beverage activities and storage of records may occur only on the premises described in this application. Attach a map or diagram and additional sheets if necessary.			

Part D: Attestation

Who must sign this application?

- one officer or director of the nonprofit organization

READ CAREFULLY BEFORE SIGNING: Under penalty of law, I have answered each of the above questions completely and truthfully. I agree that I am acting solely on behalf of the applicant organization and not on behalf of any other individual or entity seeking the license. Further, I agree that the rights and responsibilities conferred by the license(s), if granted, will not be assigned to another individual or entity. I agree to operate according to the law, including but not limited to, purchasing alcohol beverages from Wisconsin-permitted wholesalers. I understand that lack of access to any portion of a licensed premises during inspection will be deemed a refusal to allow inspection. Such refusal is a misdemeanor and grounds for revocation of this license. I understand that any license issued contrary to Wis. Stat. Chapter 125 shall be void under penalty of state law. I further understand that I may be prosecuted for submitting false statements and affidavits in connection with this application, and that any person who knowingly provides materially false information on this application may be required to forfeit not more than \$1,000 if convicted.

Last Name Nichols		First Name Katherine		M.I. S.
Title President		Email kmsharrow@gmail.com	Phone (608) 669-2445	
Signature 			Date 10/24/24	

Part E: For Clerk Use Only

Date Application Was Filed With Clerk 10-24-2024	License Number
Date License Granted	Date License Issued
Signature of Clerk/Deputy Clerk	