



## **CHILDREN'S TRUST - SPECIAL MEETING - FIRST TRIM HEARING AGENDA**

September 08, 2025 at 5:01 PM

CTAC, 4010 NW 25th Place, Gainesville, FL 32606

---

### **Call to Order**

### **Roll Call**

### **Agenda Review, Revision and Approval**

Approval of the agenda also approves all of the items on the consent agenda.

### **Public Hearing - FY2026 Proposed Millage and Tentative Budget**

1. [FY2026 Proposed Millage and Tentative Budget](#)
2. [Resolution 2025-10 \(Proposed Millage\) and Resolution 2025-11 \(Tentative Budget\)](#)

### **Board Member Comments**

### **General Public Comments**

### **Next Meeting Date**

Regular Board Meeting - Monday, September 22, 2025 @ 4:00 pm - Children's Trust of Alachua County, 4010 NW 25th Place, Gainesville, FL 32606

Special Meeting - Final TRIM Hearing - Monday, September 22, 2025 @ 5:01pm - Children's Trust of Alachua County, 4010 NW 25th Place, Gainesville, FL 32606

### **Adjournment**

### **Virtual Meeting Information**

View or listen to the meeting: [https://www.youtube.com/channel/UCpYNq\\_GkjCo9FQo3qR5-SOw](https://www.youtube.com/channel/UCpYNq_GkjCo9FQo3qR5-SOw)

Public Comments: Submit online at  
<http://www.childrenstrustofalachuacounty.us/commentcard>

### **Guidelines for Public Comments**

Public comments can be made in person at Children's Trust Board Meetings. We will no longer take comments by Zoom or by phone. If you would like to submit a written comment or a written transcript of your public comment before or after the meeting, these will be provided to Board Members prior to the next Board Meeting.

Any member of the public wishing to be heard either under the agenda section "General Public Comments" or on a specific agenda item shall approach the podium at the appropriate time.

Members of the public recognized by the Chair will have three (3) minutes to speak on a single subject matter. If an individual seeks to be heard on more than one agenda item, the Chair shall determine the amount of time allotted to the speaker. However, such time shall not exceed ten (10) minutes without the approval of the Board or Committee. The Clerk of the Trust is the official timekeeper.

Public members may not share or transfer all or part of their allotted time to any other person or agenda item, except as permitted by this Policy. To the extent a speaker has previously addressed a Board or Committee on the same subject, the Board Chair may limit repeat comments at the Board meeting by the same speaker.

**File Attachments for Item:**

1. FY2026 Proposed Millage and Tentative Budget



**CHILDREN'S TRUST**  
OF ALACHUA COUNTY

**FY 2025-26**

Item 1.

# TENTATIVE BUDGET







**CHILDREN'S TRUST**  
OF ALACHUA COUNTY



Ken Cornell  
Chair  
Alachua County Board of  
County Commissioners



Cheryl Twombly  
Vice Chair  
Community Development  
Administrator, Department of  
Children & Families



Dr. Maggie Labarta  
Treasurer  
Gubernatorial Appointee



Tina Certain  
School Board Member



Mary Chance  
Gubernatorial Appointee



Dr. Nancy Hardt  
Gubernatorial Appointee



Dr. Kamela Patton  
Superintendent  
Alachua County  
Public Schools



Lee Pinkoson  
Gubernatorial Appointee



Hon. Susanne Wilson Bullard  
Circuit Judge



Marsha Kiner  
Executive Director  
Board Secretary



August 4, 2025

**BOARD MEMBERS**

**Ken Cornell**

*Chair*

*County Commissioner*

**Cheryl Twombly**

*Vice Chair*

*Department of*

*Children and Families*

**Dr. Maggie Labarta**

*Treasurer*

*Gubernatorial Appointee*

**Hon. Susanne**

**Wilson Bullard**

*Circuit Judge*

**Tina Certain**

*School Board Member*

**Mary Chance**

*Gubernatorial Appointee*

**Dr. Nancy Hardt**

*Gubernatorial Appointee*

**Dr. Kamela Patton**

*Interim Superintendent*

*Alachua County*

*Public Schools*

**Lee Pinkoson**

*Gubernatorial Appointee*

**Marsha Kiner**

*Executive Director*

Honorable Members of the Children's Trust of Alachua County

**Re: Fiscal Year 2026 Proposed Millage and Tentative Budget**

In accordance with Florida Statutes, Chapters 125 and 200 and Chapter 26 of the Alachua County Code of Ordinances, I present to you the Tentative Millage and Proposed Budget for Fiscal Year 2026.

The FY2026 Budget totals \$17,747,676, an increase of 0.82% over the FY2025 Amended Budget. The Budget supports the recommendations provided through the Strategic Plan approved by the Board. The Budget reflects the current approved Budget for providers and includes funds for the Financial Administration and Program Operations departments. The Budget has been developed to link funding with the Trust's desired goals while remaining flexible enough to respond to changing circumstances.

The FY2026 Budget includes the Trust's Mission, Vision, and Guiding Principles, population-level results and indicators, a Budget summary by fund, details for each fund, and an organization chart with the proposed new staff positions.

A summary of the major components of the FY2026 Budget is included below.

**REVENUES**

The Budget continues to fund the Trust's operations. The Finance Committee discussed and approved of the FY2026 millage rate of .4500 mills. This millage rate will generate an additional \$815,789, an increase of 8.13% over the FY2025 Budgeted tax revenue. The Budget includes interest revenue of \$525,000, consistent with prior fiscal years, and does not anticipate any contributions from private sources.



## EXPENSES

### Grants and Aid

The FY2026 Budget provides \$12,639,820 in funding to support the community and its providers. It includes a 5% cost of living increase to address the inflationary growth impacting our community. The component of the Budget also accounts for \$1,611,871 in commitments from FY2024 Fund Balance and \$708,750 in commitments from the unallocated FY2024 funding plan.

### Personnel

The FY2026 Budget decreased by 8.19% to \$2,229,067. The budget is reflective of several drivers:

- 2.9% cost of living increase for all personnel
- 3.1% merit increase for personnel
- 2% increase in the cost of fringe benefits
- Addition of one full-time and one part-time position

### Operations

The FY2026 Budget to support operations increased less than 1% from the FY2025 Budget.

### Reserve for Capital

The FY2026 Budget includes \$200,000 in funding.

According to the Government Finance Officers Association, Budgets that meet the highest standards receive the Distinguished Budget Award and serve as an effective Policy Document, Financial Plan, Operations Guide, and Communications Device. As the Children's Trust of Alachua County continues developing both its internal capacity and provider community capacity, the Trust's Budget and Budget process will continue to develop as it strives to meet the highest standards of transparency and accountability.

Sincerely,

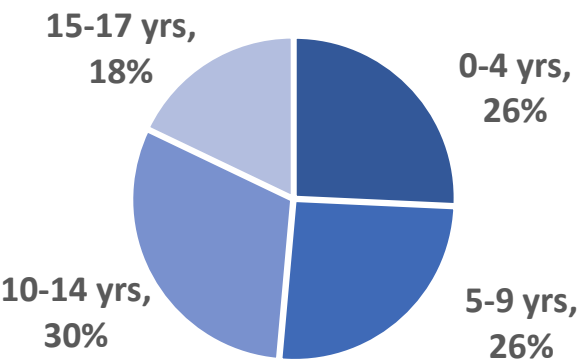
Marsha Kiner

Executive Director

# Demographics of Children in Alachua County

50,729

children under age 18 live in Alachua County



15%

of children live in households below the federal poverty level



49%

of school children are **economically disadvantaged**



53%

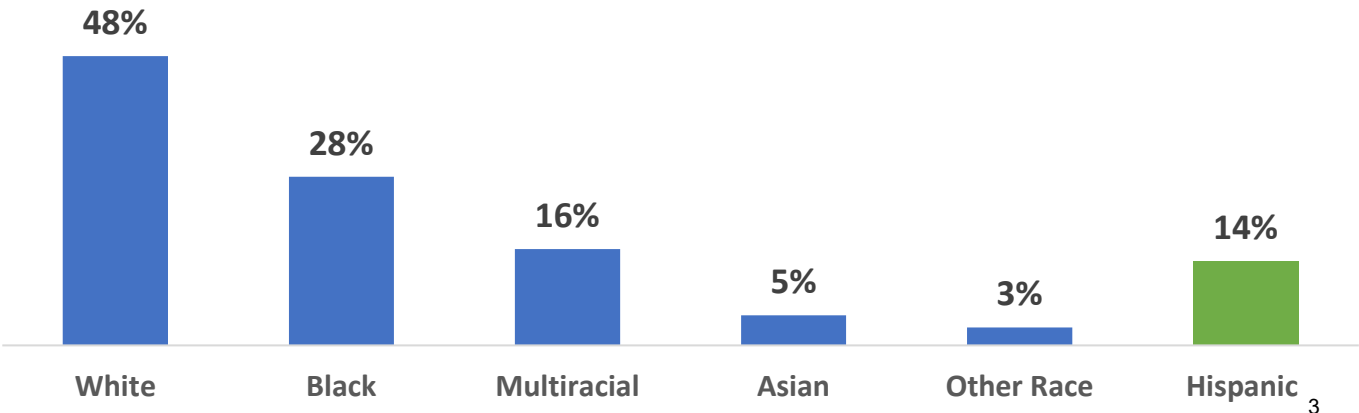
of children are ready at **kindergarten entry**



84%

of high school **students graduate** within four years.

## Alachua County Children by Race and Ethnicity



## HISTORY OF THE CHILDREN'S TRUST OF ALACHUA COUNTY

The Campaign for the Children's Trust of Alachua County started as a grassroots movement made up of parents, grandparents, child advocates, and local activists. They knew in their hearts there was more our community could do to support our local children. Local data collected and shared by experts who serve children and youth in Alachua County supported those citizens' beliefs and lived experiences.

As early as 2002, the idea of creating a Children's Services Council (CSC) in Alachua County was being considered. None of those early efforts gained sufficient momentum to move forward. By 2015, however, certain projects helped crystalize the concept of a CSC. Community members, leaders, and stakeholders, including the Alachua County Board of County Commissioners (BoCC), the Greater Gainesville Chamber of Commerce, the University of Florida, Santa Fe College, the Alachua County Children's Alliance, United Way, Partnership for Strong Families, and the Alachua County Public Schools, began to revisit the idea. These citizens and organizations hosted many community input sessions and public meetings to discuss the path forward.

In 2016, the BoCC contracted with the Well Florida Council ([wellflorida.org](http://wellflorida.org)) to conduct a children's needs assessment, with a focus on children prenatal to 5 years old. The BoCC also voted to establish a dependent Children's Services Advisory Board (CSAB). The CSAB was tasked with recommending innovative and creative programs to serve young children, gather data, consult with existing programs, and ultimately make a recommendation to the BoCC regarding the advisability of creating an independent CSC in Alachua County.

The Campaign for the Children's Trust of Alachua County conducted polling to ascertain the level of commitment from the community. That polling showed residents supported the initiative, with local voters perceiving literacy, afterschool learning, nutrition, and vocational opportunities as the most important things which could be funded, with early learning and return on investment messages receiving the strongest support. In February 2018, the BoCC unanimously voted to move forward with a voter referendum to create and fund the Children's Trust of Alachua County.

Through these efforts, the Children's Trust of Alachua County was established according to Section 125.901 Florida Statutes and Alachua County Ordinance 18-08. In November 2018, the voters approved the Trust referendum by over 61% of the votes. As a Special Independent District with taxing authority, the Trust can levy up to .5 mil, resulting in annual estimated revenues over \$8,000,000.



**CHILDREN'S TRUST**  
OF ALACHUA COUNTY

## **MISSION, VISION, AND GUIDING PRINCIPLES**

### **MISSION STATEMENT**

The Children's Trust of Alachua County funds and supports a coordinated system of community services that allows all youth and their families to thrive.

### **VISION STATEMENT**

Facilitate equitable access and opportunities for all children and families in Alachua County to ensure every child reaches their maximum potential.

### **GUIDING PRINCIPLES**

Guiding Principles are utilized within organizations as a method to align behaviors, guide decision-making, and provide consistency with the Trust's Board values. The Trust's Board and stakeholders identified the following guiding principles:

1. Initiatives should ensure accessibility to universal supports for all children 0 to 18 and their families; targeted supports for those who need additional help; and place-based supports for those with the greatest need.
2. Innovative initiatives should be funded that coordinate comprehensive systems of support and delivers those supports in collaborative ways that allows the Trust to achieve collective impact.
3. Initiatives shall be evaluated based on its ability to ultimately impact all children and youth, directly or indirectly, with a priority for long-term continual return on investment.
4. Initiatives must be measurable with priority given to a comprehensive system of supports that provide for prevention, timely intervention, and services that strengthen families and produce achievable results.
5. Initiatives must be aligned to a documented gap or need.
6. Funds will be invested, and initiatives will be prioritized based on the highest educational, social, or emotional outcome value.
7. Initiatives will be evaluated in an open, transparent, and competitive manner in order to ensure equitable results and confidence in the process.
8. The Trust values fiscal and operational accountability and will fund partners in a manner that rewards efficiencies, takes advantage of economies of scale, and maximizes services to children or family members/support members in order to meet the needs of educational, social, emotional, and/or physical health.
9. The complete portfolio of Trust investments shall be reviewed to ensure that Alachua County children, youth, and families have equitable access to services that will work to increase racial equity.
10. Prior to any funding decision, the direct impact on children and youth must be the primary consideration.

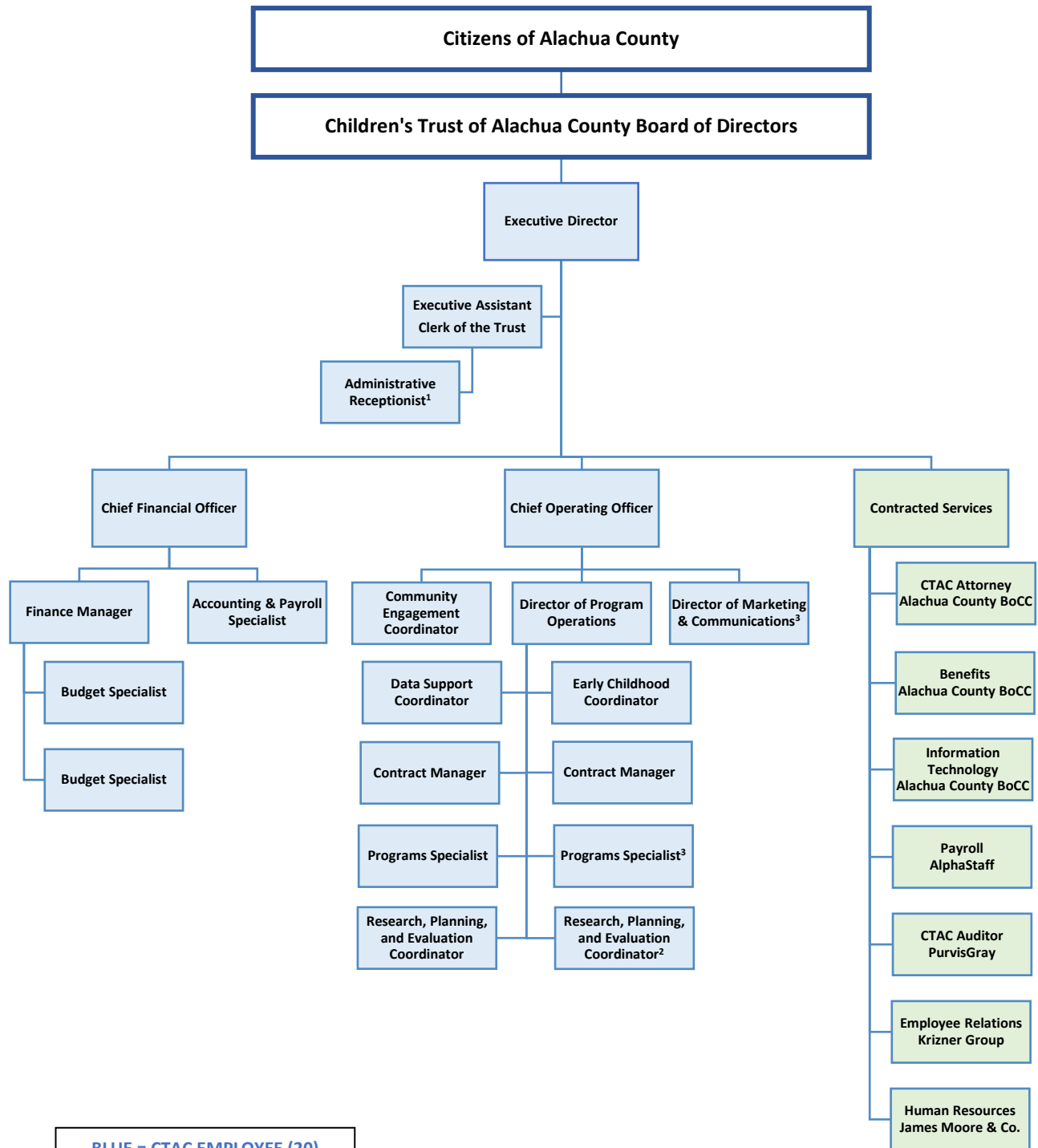




Bringing  
Smiles



# ORGANIZATIONAL CHART (June 2025)



**BLUE = CTAC EMPLOYEE (20)**  
**GREEN = CONTRACTED SERVICE**  
 (1) = indirect to CFO  
 (2) = part-time  
 (3) = vacant



## STRATEGY AND PLANNING PROCESS

The Children's Trust's Strategic Plan was finalized and adopted in summer 2023.



Star Center Theatre



Business and Leadership  
Institute for Early Learning

## Impact Framework



**Goal 1**  
Children and youth are healthy and have nurturing caregivers and relationships.

**Goal 2**  
Children and youth can learn what they need to be successful

**Goal 3**  
Children and youth live in a safe community

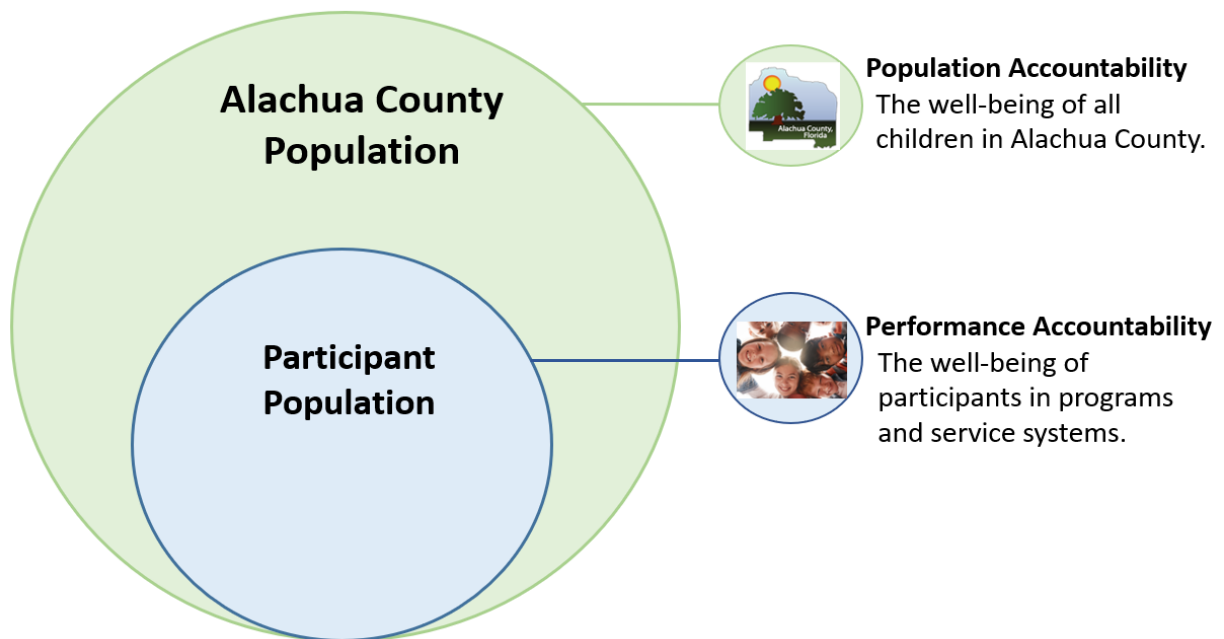
This Strategic Plan prioritizes funding investments and community partnerships in the following areas, benefiting children and families in Alachua County:

Goal 1	Goal 2	Goal 3
Maternal Child Health	Quality Early Care & Education	Mentoring & Character Building
Access to Comprehensive Care	VPK Outreach & Messaging	Out of School Time Activities
Care Coordination & Service Navigation	Out of School Time Activities	Community Collaboration
Family Resource Centers	Community Advisory Board	
System of Care Building		

Community Capacity Building		
Training Opportunities for Providers & Community	Non-Profit Capacity Building	Innovation for Impact Grants

The Trust seeks to expand access to quality services that demonstrate strong evidence of positive impact for children and youth. Early on the Trust adopted the Results Based Accountability Framework. Results Based Accountability, or RBA, enables us to communicate and reinforce collective impact through strategically funding programs and convening partners around key community issues. We apply a disciplined approach to defining and measuring key population indicators and performance measures connected with our overarching goals. It is critical to identify and galvanize powerful measures to determine the progress our community is making towards achieving community well-being. The Trust monitors community level indicators selected by the Strategic Planning Steering Committee. These community-level indicators allow us to consider the community-level context in which we seek to change through funding or inciting partnerships in areas of need for Alachua County children.

### Alachua County Population Indicators & Programs Performance Measures



In collaboration with Trust evaluation staff, each funded program develops and monitors performance measures to assess whether services are delivered as intended, with quality, and to determine outcomes and benefits of programs. The Trust utilizes a Continuous Quality Improvement (CQI) process, as well as mid-year review meetings, to formally discuss with providers program data and progress toward meeting performance targets. These




meetings are used together with ongoing data monitoring and discussion to collaboratively reflect and plan for program success.

## SAMIS

An online portal for the Children's Trust of Alachua County and its providers to manage and track our work together more efficiently.

In October 2023, the Trust launched SAMIS with providers. To date, we have on-boarded:



73	87	515
		
<b>Agencies</b>	<b>Programs</b>	<b>Provider Staff</b>

On-going shared measurement, tracking, and collaboration are cornerstones of RBA and CQI. SAMIS provides infrastructure that enables us to maximize data analytic capabilities to inform decision making. SAMIS facilitates the integration and management of several different business processes:

- Grants/Applications
- Budget/Fiscal
- Contract Management
- Programmatic/Evaluation
- Learning Management





# IN THE Community

Item 1.





## FY 2026 Estimated Ad Valorem Revenue

### 2026 Estimated Property Tax Values

The estimated adjusted property values received from the Alachua County Property Appraiser increased by 6.7% from the prior year.

2025 Adjusted Gross Taxable Value	\$24,853,510,519
2024 Final Gross Taxable Value	<u>\$23,297,160,520</u>
Total Increase/(Decrease)	\$1,556,349,999

CTAC's proposed millage rate of .4500 would generate increased tax revenue of \$815,789, an increase of 8.1% over the FY2025 budgeted tax revenue.

Millage Rate		Gross Revenue	Uncollectable	Net Revenue
.5000	Maximum	\$12,684,027	\$634,201	\$12,049,825
.4500	Proposed	\$11,415,624	\$570,781	\$10,844,843
.4218	Roll-Back	\$10,700,245	\$535,012	\$10,165,233

Note: The TRIM process requires an assumption of 95% collection rate.

CTAC's trended tax revenue is consistent with the growing number of coordinated community services that allows all youth and their families to thrive.

Fiscal Year	Status	Millage Rate	Budget	% Change
FY20	Adopted	0.5000	\$7,238,758	
FY21	Adopted	0.5000	\$7,742,236	7.0%
FY22	Adopted	0.5000	\$8,249,047	6.5%
FY23	Adopted	0.4612	\$8,858,643	7.4%
FY24	Adopted	0.4612	\$9,412,041	6.2%
FY25	Adopted	0.4500	\$10,029,054	6.6%
FY26	Tentative	0.4500	\$10,844,843	8.1%

**Children's Trust of Alachua County**  
**FY 2025 Budget by Fund Report**  
**Revenue Summary**

	<b>FY2025 Adopted Budget</b>	<b>FY2025 Amended Budget</b>	<b>FY2026 Proposed Budget</b>
<b>Fund: 001 General Fund</b>			
<u>31 - TAXES</u>			
311 1000 - Ad Valorem Taxes Current Real & Personal Property	\$10,029,054.00	\$10,029,054.00	\$10,844,843.00
<b>31 - TAXES Totals</b>	<b>\$10,029,054.00</b>	<b>\$10,029,054.00</b>	<b>\$10,844,843.00</b>
<u>36 - Miscellaneous Revenue</u>			
361 1410 - Interest And Other Earnings General Government	\$487,496.00	\$487,496.00	\$587,496.00
<b>36 - Miscellaneous Revenue Totals</b>	<b>\$487,496.00</b>	<b>\$487,496.00</b>	<b>\$587,496.00</b>
<u>38 - Other Sources</u>			
389 9100 - Non-Operating Sources Beginning Fund Balance	\$7,612,371.00	\$7,612,371.00	\$8,187,910.00
389 9200 - Non-Operating Sources Ending Fund Balance	-\$1,227,487.00	-\$1,227,487.00	-\$2,072,573.00
<b>38 - Other Sources Totals</b>	<b>\$6,384,884.00</b>	<b>\$6,384,884.00</b>	<b>\$6,115,337.00</b>
<b>General Fund Totals</b>	<b>\$16,901,434.00</b>	<b>\$16,901,434.00</b>	<b>\$17,547,676.00</b>
<b>Fund: 101 Grants and Awards</b>			
<u>36 - Miscellaneous Revenue</u>			
366 0000 - Private Contributions and Donations Private Contr and	\$0.00	\$22,145.61	\$0.00
<b>38 - Other Sources Totals</b>	<b>\$305,000.00</b>	<b>\$305,000.00</b>	<b>\$0.00</b>
<b>Grants and Awards Totals</b>	<b>\$305,000.00</b>	<b>\$327,145.61</b>	<b>\$0.00</b>
<b>Fund: 102 Collaborative Task Forces</b>			
33 - Intergovernmental Revenue Totals	\$112,500.00	\$112,500.00	\$0.00
381 0000 - Operating Transfer In Operating Transfer In	\$62,500.00	\$62,500.00	0.00
<b>Collaborative Task Forces Totals</b>	<b>\$175,000.00</b>	<b>\$175,000.00</b>	<b>0.00</b>
<b>Fund: 301 Capital Project Fund</b>			
38 - Other Sources Totals	\$250,000.00	\$250,000.00	\$200,000.00
<b>Capital Project Fund Totals</b>	<b>\$250,000.00</b>	<b>\$250,000.00</b>	<b>\$200,000.00</b>
<b>Net Grand Total</b>	<b>\$17,631,434.00</b>	<b>\$17,653,579.61</b>	<b>\$17,747,676.00</b>

**Children's Trust of Alachua County**  
**FY2025 Budget by Fund Report**  
**Expenditures Detail**

	<b>FY2025 Adopted Budget</b>	<b>FY2025 Amended Budget</b>	<b>FY2026 Proposed Budget</b>
Fund: 001 General Fund			
10 - Personnel Services	\$2,060,257.00	\$2,060,257.00	\$2,229,067.00
20 - Operating Expenses	\$1,665,956.00	\$1,665,956.00	\$1,633,662.00
50 - Grants and Aid	\$12,027,891.00	\$12,027,891.00	\$12,639,820.00
60 – Other Uses	\$1,147,330.00	\$1,147,330.00	\$845,127.00
<b>General Fund Total</b>	<b>(\$16,901,434.00)</b>	<b>(\$16,901,434.00)</b>	<b>(\$17,547,676.00)</b>
Fund: 101 Grants and Awards			
50 - Grants and Aid	\$305,000.00	\$327,145.61	\$0.00
<b>Grants and Awards Total</b>	<b>(\$305,000.00)</b>	<b>(\$327,145.61)</b>	<b>\$0.00</b>
Fund: 102 Collaborative Task Forces			
20 - Operating Expenses	\$175,000.00	\$175,000.00	\$0.00
<b>Collaborative Task Forces Total</b>	<b>(\$175,000.00)</b>	<b>(\$175,000.00)</b>	<b>\$0.00</b>
Fund: 301 Capital Project Fund			
20 - Operating Expenses	\$0.00	\$0.00	\$0.00
30 - Capital Outlay	\$200,000.00	\$200,000.00	\$200,000.00
60 - Other Uses	\$0.00	\$0.00	\$0.00
<b>Capital Project Fund Total</b>	<b>(\$200,000.00)</b>	<b>(\$200,000.00)</b>	<b>(\$200,000.00)</b>
<b>Net Grand Totals</b>	<b>(\$17,581,434.00)</b>	<b>(\$17,603,579.61)</b>	<b>(\$17,747,676.00)</b>

**FY2026 Tentative Budget  
Personnel Detail**

<b>Employee Name</b>
<b>Executive</b>
Marsha Kiner
<b>Administration &amp; Finance</b>
Keturah Bailey Acevedo - Executive Assistant & Clerk of the Trust
Scott Sumner – Interim Chief Financial Officer
Nicole Odom - Finance Manager
Tara Major - Accounting & Payroll Specialist
Jeannine Seider - Budget Specialist
Thomas Hill - Budget Specialist
New Position - Administrative Receptionist
<b>Operations</b>
Kristy Goldwire - Chief Operating Officer
Belita James - Director Program Operations
Max De Zutter - Contract Manager
Linda Means - Contract Manager
Amalie Bethune - Programs Specialist
Vacant - Programs Specialist
Mia Jones - Early Childhood Coordinator
Amy Wagner - Research, Planning & Evaluation Coordinator
Bonnie Wagner - Research, Planning & Evaluation Coordinator
Demetrica Tyson - Data Support Coordinator
Emily McCauley - Community Engagement Coordinator
Vacant - Communications Manager
Naomi Volcy - Communications Specialist (Part-time)

## FY 2026 Proposed Budget

## Program Funding

Initial Program Funding Allocation

FY2024 Fund Balance Commitments

FY2024 Unallocated Budget Commitments

GOAL 1: CHILDREN AND YOUTH ARE HEALTHY AND HAVE NUTURING CAREGIVERS AND RELATIONSHIPS		Contracted Amounts	COLA Adjustment	2026 Proposed Contracted Budget	2026 Tentative Contracted Budget
PROGRAM	AGENCY			\$5,280,850	\$5,280,850
NewboRN Home Visiting Program	Healthy Start of North Central Florida	\$471,883	\$23,594	\$495,477	\$495,477
ACCESS Program (MCH)	UF Health	\$70,000	\$0	\$85,660	\$85,660
Doula Friendly Initiative (MCH)	A&A Doula	\$49,197	\$0	\$49,197	\$49,197
Flourish Alachua (MCH)	BEAM Birth Network, LLC	\$60,000	\$0	\$60,000	\$60,000
REACH Community Counseling Services for Adolescent Girls	PACE Center for Girls	\$114,442	\$5,722	\$120,164	\$120,164
Partners in Adolescent Lifestyle Support (PALS)	UF Health Shands	\$114,442	\$5,722	\$120,164	\$120,164
Reducing Trauma to Abused Children Therapy Program	Child Advocacy Center	\$157,500	\$0	\$157,500	\$157,500
Family Resource Centers	Partnership for Strong Families Community Navigators	\$610,477	\$30,524	\$641,001	\$673,001
	Partnership for Strong Families Consultant Contract	\$177,023	\$8,851	\$185,874	\$153,874
	Willie Mae Stokes Community Center	\$157,500	\$7,875	\$165,375	\$165,375
	One Community Health & Wellness Resource Center	\$157,500	\$7,875	\$165,375	\$165,375
	City of Hawthorne	\$150,000	\$0	\$150,000	\$150,000
	TBD	\$150,000	\$0	\$150,000	\$150,000
Help Me Grow	Partnership for Strong Families	\$220,000	\$0	\$220,000	\$253,000
Saving Smiles	UF College of Dentistry	\$344,921	\$17,246	\$362,167	\$362,167
Wellness Healthcare Navigator	Children's Home Society of Florida	\$252,628	\$12,631	\$265,259	\$265,259
GOAL 1 COMMITMENTS		\$3,257,513	\$120,040	\$3,243,213	\$3,426,213
GOAL 1 BALANCE				\$2,037,637	\$1,854,637

**FY 2026 Proposed Budget  
Program Funding**

<b>Initial Program Funding Allocation</b>
<b>FY2024 Fund Balance Commitments</b>
<b>FY2024 Unallocated Budget Commitments</b>

<b>GOAL 2: CHILDREN AND YOUTH CAN LEARN WHAT THEY NEED TO BE SUCCESSFUL</b>		<b>Contracted Amounts</b>	<b>COLA Adjustment</b>	<b>2026 Proposed Contracted Budget</b>	<b>2026 Tentative Contracted Budget</b>
<b>PROGRAM</b>	<b>AGENCY</b>			<b>\$3,696,595</b>	<b>\$3,696,595</b>
<b>EARLY LEARNING PROGRAMMING</b>					
V'Locity Master Class Series & Accreditation	Business Leadership Institute for Early Learning	\$360,000	\$0	\$360,000	\$360,000
Childcare Tuition Assistance Program	Early Learning Coalition of Alachua County	\$450,000	\$0	\$450,000	\$650,000
Summer Bridge for Head Start	Episcopal Childrens' Services	\$250,304	\$12,515	\$262,820	\$262,820
<b>SUMMER CAMP PROGRAMMING</b>					
SUMMER CAMP	Traveling Art Camp	\$291,946	\$14,597	\$306,543	\$306,543
	Behavior Bricks	\$159,626	\$7,981	\$167,607	\$167,607
	UF CROP Full Steam	\$35,000	\$1,750	\$36,750	\$36,750
	Limitless Adventures	\$50,785	\$2,539	\$53,325	\$53,325
	UF Veterinary Medicine	\$8,750	\$437	\$9,187	\$9,187
	Mirror Image Education and Leadership	\$62,400	\$3,120	\$65,520	\$65,520
	Star Center Children's Theatre	\$76,440	\$3,822	\$80,262	\$80,262
	Hagios Early Learning Center	\$26,002	\$1,300	\$27,302	\$27,302
	Williams Temple	\$8,040	\$402	\$8,442	\$8,442
	Greater Duval Neighborhood Association	\$42,000	\$2,100	\$44,100	\$44,100
	I Am Stem	\$180,040	\$9,002	\$189,042	\$189,042
	Gainesville Circus Center	\$25,199	\$1,260	\$26,459	\$26,459
	Girls Place	\$134,199	\$6,710	\$140,909	\$140,909
	Community Impact Corporation	\$129,158	\$6,458	\$135,616	\$135,616
	Boys and Girls Clubs of Alachua County	\$105,002	\$5,250	\$110,252	\$110,252
	Deeper Purpose Community Church	\$179,999	\$9,000	\$188,999	\$188,999
	Camp Makerie	\$122,500	\$6,125	\$128,625	\$128,625
	IGB Education	\$105,240	\$5,262	\$110,502	\$110,502
	Kids Count in Alachua County	\$39,933	\$1,997	\$41,929	\$41,929
	The Concrete Rose Foundation	\$35,980	\$1,799	\$37,779	\$37,779
	Dance Alive	\$7,000	\$350	\$7,350	\$7,350
	Gainesville Area Tennis Association Aces in Motion	\$56,700	\$2,835	\$59,535	\$59,535
	Just For Us Education	\$119,560	\$5,978	\$125,538	\$125,538



**FY 2026 Proposed Budget  
Program Funding**

**Initial Program Funding Allocation**

**FY2024 Fund Balance Commitments**

**FY2024 Unallocated Budget Commitments**

<b>ENRICHMENT PROGRAMMING</b>					
Enrichment Programming	All Well Health Services	\$4,403	\$220	\$4,624	\$4,624
	CE's Underground Kitchen	\$129,065	\$6,453	\$135,518	\$135,518
	Crafty Gemini Youth Development	\$75,000	\$3,750	\$78,750	\$78,750
	Cultural Arts Coalition	\$33,498	\$1,675	\$35,173	\$35,173
	DJ ELO Global	\$36,810	\$1,841	\$38,651	\$38,651
	Dream on Purpose	\$17,672	\$884	\$18,556	\$18,556
	IGB Education	\$24,453	\$1,223	\$25,675	\$25,675
	Inifinite Dream Builders	\$14,265	\$713	\$14,978	\$14,978
	Lee's Preschool Center	\$88,023	\$4,401	\$92,424	\$92,424
	Motiv8U of North Central Florida	\$157,500	\$7,875	\$165,375	\$165,375
	Music & Arts Program for Youth	\$60,356	\$3,018	\$63,374	\$63,374
	Santa Fe College	\$91,209	\$4,560	\$95,770	\$95,770
	UF Musuem of Natural History	\$56,159	\$2,808	\$58,966	\$58,966
<b>AFTER-SCHOOL PROGRAMMING</b>					
Afterschool Programming	Boys and Girls Clubs of Alachua County	\$129,676	\$6,484	\$136,160	\$136,160
	Deeper Purpose Community Church	\$120,713	\$6,036	\$126,749	\$126,749
	Gainesville Area Tennis Association Aces in Motion	\$272,563	\$13,628	\$286,191	\$286,191
	Gainesville Circus Center	\$148,698	\$7,435	\$156,133	\$156,133
	Girls Place	\$134,330	\$6,717	\$141,047	\$141,047
	Kids Count in Alachua County	\$197,524	\$9,876	\$207,400	\$207,400
	Willie Mae Stokes Community Center	\$164,382	\$8,219	\$172,601	\$172,601

**FY 2026 Proposed Budget  
Program Funding**

**Initial Program Funding Allocation**

**FY2024 Fund Balance Commitments**

**FY2024 Unallocated Budget Commitments**

OTHER PROGRAMS					
Summer Programming	Freedom School - Gainesville	\$136,737	\$6,837	\$143,574	\$143,574
	Freedom School - Hawthorne	\$80,000	\$4,000	\$84,000	\$84,000
Dolly Parton Imagination Library	Gainesville Thrive	\$60,000	\$3,000	\$63,000	\$63,000
Peak Literacy Program Expansion	Gainesville BRIDGE	\$115,500	\$5,775	\$121,275	\$121,275
TeensWork Alachua (TWA)	Goodwill Industries of North Florida	\$945,000	\$47,250	\$992,250	\$992,250
		\$	\$0	00	\$0
Junior Achievement	3DE Program (Eastside HS)	\$150,000	\$7,500	\$157,500	\$157,500
	BizTown	\$50,000	\$0	\$50,000	\$50,000
The Education Foundation	Alachua County Amplify	\$125,000	\$0	\$125,000	\$125,000
<b>GOAL 2 COMMITMENTS</b>		<b>\$6,680,339</b>	<b>\$270,453</b>	<b>\$6,965,107</b>	<b>\$7,165,107</b>
<b>GOAL 2 BALANCE</b>				<b>-\$3,268,512</b>	<b>-\$3,468,512</b>

**FY 2026 Proposed Budget  
Program Funding**

**Initial Program Funding Allocation**

**FY2024 Fund Balance Commitments**

**FY2024 Unallocated Budget Commitments**

<b>GOAL 3: CHILDREN AND YOUTH LIVE IN A SAFE COMMUNITY</b>		<b>Contracted Amounts</b>	<b>COLA Adjustment</b>	<b>2026 Proposed Contracted Budget</b>	<b>2026 Tentative Contracted Budget</b>
<b>PROGRAM</b>	<b>AGENCY</b>			<b>\$1,056,170</b>	<b>\$1,056,170</b>
<b>MENTORING &amp; CHARACTER BUILDING</b>					
Mentoring Programs	Provider engagement, training, and capacity building	\$200,000	\$0	\$200,000	\$50,000
<b>YOUTH SAFETY PROGRAMMING</b>					
		\$0	\$0	\$0	\$0
YOUTH SAFETY INITIATIVES	AMI Kids	\$200,000	\$10,000	\$210,000	\$210,000
	Gun Violence Initiative	\$500,000	\$0	\$500,000	\$150,000
	Youth Engagement	\$150,000	\$0	\$150,000	\$75,000
	Alachua County Sherrif's Office - Cops & Burgers	\$60,000	\$0	\$60,000	\$60,000
<b>GOAL 3 TOTAL COMMITMENTS</b>		<b>\$1,110,000</b>	<b>\$10,000</b>	<b>\$1,120,000</b>	<b>\$545,000</b>
<b>GOAL 3 BALANCE</b>				<b>-\$63,830</b>	<b>\$511,170</b>

<b>COMMUNITY CAPACITY BUILDING &amp; INNOVATION GRANTS</b>		<b>Contracted Amounts</b>	<b>COLA Adjustment</b>	<b>2026 Proposed Contracted Budget</b>	<b>2026 Tentative Contracted Budget</b>
<b>PROGRAM</b>	<b>AGENCY</b>			<b>\$528,085</b>	<b>\$528,085</b>
Center for Non-Profit Excellence (3 Years)	Community Foundation of NCF	\$200,000	\$0	\$200,000	\$200,000
My Sidewalk (3 Years)	Community Foundation of NCF	\$15,000	\$0	\$15,000	\$15,000
Philanthropy Hub	Community Foundation of NCF	\$8,500	\$0	\$0	\$8,500
Interpreter Services	Language Line	\$10,000	\$0	\$10,000	\$10,000
Youth Development Capacity Building Collaborative & Training	Multiple Providers	\$90,000	\$0	\$90,000	\$90,000
	Florida Afterschool Network Membership				
	Childrens' Forum				
	Florida Afterschool Annual Conference				
	Multiple Providers				
	Trauma Informed Training	\$210,000	\$0	\$210,000	\$210,000
	Multiple Providers				
Provider Memberships & Training, Finance & Administration Infrastructure	Multiple Providers	\$210,000	\$0	\$210,000	\$210,000
INNOVATION GRANTS	TBD	\$200,000	\$0	\$200,000	\$200,000
<b>CAPACITY BUILDING &amp; MINI GRANTS TOTAL COMMITMENTS</b>		<b>\$733,500</b>	<b>\$0</b>	<b>\$725,000</b>	<b>\$733,500</b>
<b>CAPACITY BUILDING &amp; MINI GRANTS BALANCE</b>				<b>-\$196,915</b>	<b>-\$205,415</b>

**FY 2026 Proposed Budget  
Program Funding**

**Initial Program Funding Allocation**

**FY2024 Fund Balance Commitments**

**FY2024 Unallocated Budget Commitments**

PROVIDER CONTRACT SUMMARY	Contracted Amounts	COLA Adjustment	2026 Proposed Contracted Budget	2026 Tentative Contracted Budget
FUNDING			\$10,561,700	\$9,503,302
COMMITMENTS	\$12,451,747	\$431,203	\$12,874,450	\$11,869,820
BALANCE			-\$2,312,750	-\$2,366,518

EMERGENT NEEDS, SPONSORSHIPS, and INITIATIVES		Budget Amount	COLA Adjustment	2025 Proposed Budget	2026 Tentative Budget
PROGRAM	AGENCY			\$160,000	\$770,000
EMERGENT NEEDS	TBD	\$100,000	\$0	\$100,000	\$100,000
SPONSORSHIPS	TBD	\$60,000	\$0	\$60,000	\$60,000
LITERACY INITIATIVES	TBD	\$550,000	\$0	\$0	\$550,000
	Reach Out & Read	60,000	\$0	60,000	60,000
TOTAL COMMITMENTS		\$770,000	\$0	\$160,000	\$770,000
BALANCE				\$0	\$0

TOTALS	Budget Amount	COLA Adjustment	2026 Proposed Budget	2026 Tentative Budget
FUNDING			\$10,273,302	\$10,273,302
COMMITMENTS	\$13,221,747	\$431,203	\$13,652,950	\$12,639,820
BALANCE			-\$3,379,648	-\$2,366,518

FY2024 Fund Balance Commitments		\$1,811,871	\$1,611,871
FY2024 Unallocated Budget Commitments		\$770,000	\$708,750
	Total	\$2,581,871	\$2,320,621

DATE	RESPONSIBILITY	ACTION
<b>Wednesday, March 11</b>	<i>Finance Department</i>	<i>Send out email to all staff stating that budget requests are in development.</i>
<b>Sunday, June 1</b>	<i>Alachua County Property Appraiser</i>	<i>Delivery of the total assessed value of non-exempt property in Alachua County.</i>
<b>Monday, June 9</b>	<i>Board of the Trust</i>	<i>Approval of two Truth in Millage Resolutions - 1) A resolution setting the Proposed Millage Rate, setting the date, time, and place of the Public Hearings to consider the proposed millage rate and tentative budget; 2) A resolution adopting a tentative written budget for Fiscal Year 2026.</i>
<b>Tuesday, July 1</b>	<i>Alachua County Property Appraiser</i>	<i>Certification of the taxable value to each taxing authority on the Certification of Taxable Value (Form DR-420).</i>
<b>Tuesday, July 1</b>	<i>Executive Director</i>	<i>Submission of a tentative annual budget to the Alachua County Board of County Commissioners.</i>
<b>Thursday, July 31</b>	<i>School Board of Alachua County</i>	<i>School Board of Alachua County first public budget hearing.</i>
<b>Friday, August 1</b>	<i>Executive Director</i>	<i>No later than August 4, 2025, (within 35 days after the Certification of Taxable Value), each taxing authority must inform the Alachua County Property Appraiser of the prior year millage rate, the current year proposed millage rate, the current year rolled-back rate, and the date, time, and meeting place of the first required tentative budget hearing.</i>
<b>Friday, August 22</b>	<i>Alachua County Property Appraiser</i>	<i>No later than August 24, 2025, (within 55 days after the Certification of Taxable Value), the Alachua County Property Appraiser must send the Truth in Millage notification to all property owners in Alachua County.</i>
<b>Wednesday, September 3</b>	<i>Communications Manager</i>	<i>Pursuant to F.S. 200.065, the tentative budget must be posted on the authority's official website at least two days before the budget hearing and must remain on the website for at least 45 days.</i>
<b>Monday, September 8</b>	<i>Board of the Trust</i>	<i>First public hearing of the proposed millage rate and the tentative budget. (Hearing dates with July 1 Certification - No sooner than Sept. 3 and no later than Sept. 18)</i>
<b>Tuesday, September 9</b>	<i>School Board of Alachua County</i>	<i>School Board of Alachua County second public budget hearing.</i>
<b>Wednesday, September 10</b>	<i>Alachua County Library District</i>	<i>Alachua County Library District first public budget hearing.</i>
<b>Tuesday, September 16</b>	<i>Alachua County Board of County Commissioners</i>	<i>Alachua County Board of County Commissioners first public budget hearing.</i>
<b>Wednesday, September 17</b>	<i>Clerk of the Trust</i>	<i>Advertisement of final hearing posted two to five days before the final hearing. Notice of Proposed Tax Increase <u>OR</u> Notice of Budget Hearing <u>AND</u> Budget Summary.</i>

DATE	RESPONSIBILITY	ACTION
<b>Wednesday, September 17</b>	<i>Communications Manager</i>	<i>Preliminary adopted budget posted on the authority's official website at least two days before the final budget hearing.</i>
<b>Monday, September 22</b>	<i>Board of the Trust</i>	<i>Second public hearing of the final millage rate and the final adopted budget. This must be held within 15 days following the first hearing.</i>
<b>Tuesday, September 23</b>	<i>Alachua County Board of County Commissioners</i>	<i>Alachua County Board of County Commissioners second public budget hearing.</i>
<b>Wednesday, September 24</b>	<i>Alachua County Library District</i>	<i>Alachua County Library District second public budget hearing.</i>
<b>Wednesday, September 24</b>	<i>Finance Department</i>	<i>The taxing authority must forward the resolution adopting the final millage rate to the Alachua County Property Appraiser, the Alachua County Tax Collector, and the Florida Department of Revenue within three days of the final hearing. Receipt of the resolution is the official notification of the final millage rate.</i>
<b>Friday, October 17</b>	<i>Clerk of the Trust Finance Department</i>	<i>Within 30 days of the final hearing, each taxing authority must complete and submit the following forms to the Florida Department of Revenue: 1) Certification of Compliance (Form DR-487) a) Provide proof of publication for all newspaper advertisements. b) Provide the entire page from each newspaper advertisement including the Budget Summary advertisement and the Notice of Proposed Tax Increase or Budget Hearing Advertisement. c) Submit the authority's resolution adopting the final millage rate, with percent change of rolled-back rate shown and the resolution adopting the final budget, indicating order of adoption. 2) Vote Record for Final Adoption of Millage Levy (Form DR-487V) 3) A copy of the Certification of Final Taxable Value (Form DR-422)</i>
<b>Friday, October 17</b>	<i>Communications Manager</i>	<i>The final adopted budget must be posted on the authority's official website within 30 days after the adoption and must remain on the website for at least two years.</i>
<b>Monday, October 20</b>	<i>Clerk of the Trust</i>	<i>Return original copy of the complete Certification of Final Taxable Value (Form DR-422) to the Alachua County Property Appraiser.</i>
<b>October - December</b>	<i>Executive Director</i>	<i>The governing body of the authority, pursuant to F.S. 189.016(6) citing F.S. 200.065, dictates that any budget amendment that increases or decreases the overall budget after 60 days of the passing of the final budget, must be passed by resolution, posted on the website within 5 days and remain there for two years.</i>





CHILDREN'S TRUST  
OF ALACHUA COUNTY

Item 1.

# NOTES

Handwriting practice lines consisting of 15 horizontal dashed blue lines.

CHILDREN'S TRUST OF ALACHUA COUNTY

4010 NW 25<sup>TH</sup> PLACE, GAINESVILLE, FL 32606  
CHILDRENSTRUSTOFALACHUACOUNTY.US  
352-374-1830



# THANK YOU

## RESIDENTS OF ALACHUA COUNTY!

Item 1.



**CHILDREN'S TRUST**  
OF ALACHUA COUNTY

4010 NW 25<sup>th</sup> Place  
Gainesville, FL 32606  
352-374-1830

[ChildrensTrustOfAlachuaCounty.us](http://ChildrensTrustOfAlachuaCounty.us)

31

**File Attachments for Item:**

2. Resolution 2025-10 (Proposed Millage) and Resolution 2025-11 (Tentative Budget)

## RESOLUTION 2025-10

A RESOLUTION OF THE CHILDREN'S TRUST OF ALACHUA COUNTY;  
ESTABLISHING A PROPOSED MILLAGE RATE FOR FISCAL YEAR 2025/2026;  
PROVIDING FOR AN EFFECTIVE DATE.

WHEREAS, on June 9, 2025, the Board of the Children's Trust of Alachua County adopted Resolution 2025-06 approving the proposed millage rate and Resolution 2025-07, approving a proposed Children's Trust budget; and

WHEREAS, pursuant to the law and utilizing the rates established in the said resolution, by the Alachua County Property Appraiser mailed a Notice of Proposed Property Taxes to each taxpayer listed on the current year's assessment roll; and,

WHEREAS, the public hearing has been held as specified in the Notice of Proposed Property Taxes in accordance with applicable law; and

WHEREAS, the gross taxable value for operating purposes not exempt from taxation within Alachua County has been certified by the County Property Appraiser to the Children's Trust of Alachua County as \$24,853,510,519.

NOW, THEREFORE, BE IT RESOLVED BY THE CHILDREN'S TRUST OF ALACHUA COUNTY;

1. The FY 2025-26 operating millage rate to fund the tentative budget of the Children's Trust of Alachua County is 0.4500 mills, which is greater than the rolled-back rate of .4218 mills by 6.69%.
2. This resolution shall take effect immediately upon its adoption.

DULY ADOPTED in public hearing, this 8th day of September, A.D., 2025.

PASSED AND ADOPTED BY THE CHILDREN’S TRUST OF ALACHUA COUNTY BOARD; this 9th day of June 2025.

	AYE	NAY	ABSENT	NOT VOTING
Ken Cornell	_____	_____	_____	_____
Cheryl Twombly	_____	_____	_____	_____
Dr. Maggie Labarta	_____	_____	_____	_____
Lee Pinkson	_____	_____	_____	_____
Tina Certain	_____	_____	_____	_____
Mary Chance	_____	_____	_____	_____
Hon. Susanne Wilison Bullard	_____	_____	_____	_____
Dr. Nancy Hardt	_____	_____	_____	_____
Dr. Kamela Patton	_____	_____	_____	_____

Presiding Officer

Attest

\_\_\_\_\_  
Ken Cornell, Chair  
Children’s Trust of Alachua County

\_\_\_\_\_  
Marsha Kiner, Secretary  
Children’s Trust of Alachua County

RESOLUTION 2025-11  
A RESOLUTION OF THE CHILDREN'S TRUST OF  
ALACHUA COUNTY;  
ESTABLISHING A TENTATIVE BUDGET FOR FISCAL YEAR  
2025/2026;  
PROVIDING FOR AN EFFECTIVE DATE.

WHEREAS, on June 9, 2025, Executive Director of the Children's Trust of Alachua County, presented a balanced budget for further consideration by the Board of the Children's Trust in accordance with applicable law; and,

WHEREAS, said budget contained estimates of receipts and of balances brought forward as part of the budget presentation; and,

WHEREAS, the Board of the Children's Trust of Alachua County has complied with all conditions precedent to the adoption of a tentative Children's Trust budget; and,

WHEREAS, the Board as of this date adopted a resolution approving a tentative millage to fund the tentative Children's Trust budget;

NOW, THEREFORE, BE IT RESOLVED BY THE BOARD OF THE CHILDREN'S TRUST OF ALACHUA COUNTY:

1. In accordance with the requirements of Section 125.901, Florida Statutes, the estimates of receipts are set out in the document entitled "FY26 Tentative Budget".
2. The tentative Children's Trust budget contained in the document entitled " FY26 Tentative Budget" in the amount of \$17,747,676.00 is hereby approved as adjusted by motion for further consideration at the public hearing established in this resolution.
3. A public hearing will be held to consider the final millage rate and final budget for the Children's Trust purposes on Monday the 22nd of September, A.D., 2025; at 5:01 p.m., or as soon thereafter as the matter may be heard.
4. The Executive Director of the Children's Trust of Alachua County, is hereby authorized and directed to prepare and publish all necessary and required notices prior to the hearing established herein, and to provide copies of this resolution to all parties as may be required by applicable law.
5. This resolution shall take effect immediately upon its adoption.

DULY ADOPTED in public hearing, this 8th day of September, A.D., 2025.

PASSED AND ADOPTED BY THE CHILDREN’S TRUST OF ALACHUA COUNTY BOARD; this 9th day of June 2025.

	AYE	NAY	ABSENT	NOT VOTING
Ken Cornell	_____	_____	_____	_____
Cheryl Twombly	_____	_____	_____	_____
Dr. Maggie Labarta	_____	_____	_____	_____
Lee Pinkson	_____	_____	_____	_____
Tina Certain	_____	_____	_____	_____
Mary Chance	_____	_____	_____	_____
Hon. Susanne Wilison Bullard	_____	_____	_____	_____
Dr. Nancy Hardt	_____	_____	_____	_____
Dr. Kamela Patton	_____	_____	_____	_____

Presiding Officer

Attest

\_\_\_\_\_  
Ken Cornell, Chair  
Children’s Trust of Alachua County

\_\_\_\_\_  
Marsha Kiner, Secretary  
Children’s Trust of Alachua County