



Parks and Recreation Commission Meeting Agenda Wednesday, April 28, 2021, 5:00 PM Zoom Meeting - Special Meeting

NOTE: The City welcomes public meeting citizen participation. TTY Relay Service: 711. In compliance with the ADA, if you need special assistance to participate in a meeting, contact the City Clerk's office at (360) 834-6864, 72 hours prior to the meeting to enable the City to make reasonable accommodations to ensure accessibility (28 CFR 35.102-35.104 ADA Title 1.).

Participate in this virtual Meeting with the online ZOOM application and/or by phone.

OPTION 1 -- Join the virtual meeting from any device:

1. First-time ZOOM users, go to
 - To download the free ZOOM Cloud Meetings app for your device
 - Or, click the Join Meeting link in the top right corner and paste - 988 4760 2810
2. From any device click the meeting link <https://zoom.us/j/98847602810>
3. Enter your email and name, and then join webinar.
4. Wait for host to start the meeting.

OPTION 2 -- Join the virtual meeting from your phone (audio only):

1. Dial 877-853-5257
2. When prompted, enter meeting ID 988 4760 2810, and then ###

During Public Comment periods:

1. Attendees may click the **raise hand icon** in the app and you will be called upon to comment for up to 3 minutes.
 - If listening by phone, hit *9 to "raise your hand" and you will be called upon to comment for up to 3 minutes.
2. Residents can send public comments to (limit to 300 words).
These will be entered into the meeting record. Emails received by one hour before the start of the meeting will be emailed to the Meeting Body prior to the meeting start time. During the meeting, the clerk will read aloud the submitter's name, the subject, and the date/time it was received. Emails will be accepted until 1 hour received after the meeting and will be emailed to the Meeting Body no later than the end of the next business day.

CALL TO ORDER

ROLL CALL

MEETING GROUND RULES: Listen With An Open Mind, Let Everyone Participate, Close Decisions, Identify Action Items & Follow Up, Show Up On Time & Come Prepared, Stay Mentally & Physically Present

PUBLIC COMMENTS

APPROVAL OF MINUTES

1. [March 24, 2021 Approval of Parks & Recreation Commission Minutes](#)

MEETING ITEMS

2. [P&R Commission Roles and Responsibilities \(30 minutes\)](#)
Presenter: Trang Lam, Parks & Recreation Director
3. [Lower Columbia Fish Enhancement – Lower Lacamas Creek Restoration Grant Application \(15 minutes\)](#)
Presenter: Maurice Frank, Project Manager for LCFEG
4. Lacamas Park Trail Bridge (30 minutes)
Presenter: Trang Lam, Parks & Recreation Director

PROJECT UPDATES

5. Lake Management Plan (5 minutes)
Presenter: Steve Wall, Public Works Director
6. [Park Assignments \(20 Minutes\)](#)
Presenter: Jason Irving

OTHER ITEMS

ADJOURNMENT



**Parks and Recreation Commission - Special Meeting
Minutes
Wednesday, March 24, 2021, 5:00 PM
Zoom Meeting**

CALL TO ORDER

Steve Lorenz called the meeting to order at 5:00 pm

ROLL CALL

Present: Katy Daane, David Dewey, Brittany Grahn, Jason Irving, Steve Lorenz, Cassi Marshall,
Council Liaison Ellen Burton

Excused: Dario Izarraras

PUBLIC COMMENTS

No public comments

APPROVAL OF MINUTES

1. February 24, 2021 approval of Parks & Recreation Commission Minutes

Motion made by Marshall, seconded by Dewey, and carried to approve the Parks & Recreation Commission minutes of February 24, 2021, as written.

MEETING ITEMS

2. Chair & Vice Chair – Discussion & Vote
Presenter: Steve Lorenz (10 minutes)

A motion was made by Marshall, seconded by Irving, and carried to vote Steve Lorenz as Chair and Jason Irving as Vice Chair of the Parks & Recreation Commission for 2021.

2. Meeting Ground Rules – Discussion & Vote
Presenter: Trang Lam, Parks & Recreation Director (20 Minutes)

Lam reviewed the top five meeting ground rules with the group. Discussion ensued.

3. Proposed Trail Presentation – CJ Dens Development
Presenter: Lauren Hollenbeck, Senior Planner (10 Minutes)

Hollenbeck gave a presentation on a land use development that includes a park component, trail development on the north shore of Lacamas Lake. Discussion ensued.

4. PROS Plan Scope and Proposed Timeline Presentation
Presenter: Trang Lam, Parks & Recreation Director (10 Minutes)

Lam did a presentation on the proposed plan for the PROS Plan Update, which includes; public engagement, community needs assessment, development and timeline. Discussion ensued.

PROJECT UPDATES

6. Project updates
Presenter: Steve Wall, Public Works Director (20 minutes)
 - Unauthorized Bike Ramps
Wall gave an update on the bike ramps, encouraged PROS Plan participation.
 - Lake Management Plan
Wall gave an update on the first committee meeting.
 - Maintenance
 - Mowing at pretty much full capacity now
 - Sports Fields are all getting prepped for use
 - Crew is doing an awesome job at getting things prepped for Spring/SummerWall provided parks maintenance updates. Discussion ensued.
7. Park Assignments
Presenter: Steve Lorenz (5 minutes)

Lorenz provided information on current park assignments. Discussion ensued.

OTHER ITEMS

Ivy League – Marshall provided an update on Ivy League projects with students and the Rotary Club.

Forest Home Park – Irving provided an update on the park and a water sampling project.

ADJOURNMENT

Meeting adjourned at 6:40 pm.

2.28.050 - Duties and responsibilities.

The parks and recreation commission shall have the following duties and responsibilities:

- A. To make recommendations biannually to the city council and other city departments with respect to the implementation and modification of the city comprehensive parks and recreation plan;
- B. To make recommendations to the city council regarding the acquisition of park lands;
- C. To make recommendations to the city council regarding the planning and development of park lands and recreational facilities;
- D. To review annually the budget for the planning, development, operation, maintenance, and capital improvements of parks and recreation facilities, and to make recommendations to the city council concerning such budget;
- E. To act as a research and fact-finding agency for the city, and in the conduct thereof to hold public meetings from time to time for the purpose of reviewing park and recreation programs, and to make such surveys, analyses, studies, and reports as may be necessary and appropriate;
- F. To make recommendations to the city council regarding rules and regulations for use of the parks and recreation facilities;
- G. To hear complaints and mediate disputes concerning parks and recreation facilities;
- H. To formulate a recreational program for the residents of the city for the utilization of available parks, playgrounds, and recreational facilities, and to review such program annually;
- I. Reserved.

(Ord. 1929 § 5, 1993; Ord. 1717 § 5, 1989)

(Ord. No. 16-008, § V, 5-16-2016; Ord. No. 19-020, § III—V, 11-18-2019)

Project Name: Lower Lacamas Creek Riparian- Phase 1
 Primary Sponsor: Lower Columbia Fish Enhancement Group

Project Location.

Lower Lacamas Creek Riparian- Phase one project site is located at 45°35'13.25"N, 122°23'20.84"W in Camas, WA. The project site is within a large floodplain that is between Lacamas Creek (Lacamas Cr 1 A) and the Washougal River (Washougal 2 Tidal).

Brief Project Summary.

This project will improve impaired riparian conditions and restore natural processes to approximately 9 acres of floodplain, which is shared by both Lacamas Creek and the Washougal River. This will be accomplished by: 1) removing nonnative invasive vegetation; 2) using various methods to eradicate or control reed canary grass (e.g., mowing, scraping, or spraying, etc.); 3) establishing robust native plant communities (e.g., installing native trees, shrubs, and grasses) to outcompete the invasive vegetation and enhance the riparian forest canopy. These proposed restoration activities help improve overall floodplain function and health by protecting water quality, recharging groundwater reserves, lowering water temperatures, and restoring the local ecosystem.

Project Goals.

1. *To improve riparian conditions of lower Lacamas Creek and the Washougal River to alleviate the impacts of stormwater runoff from nearby impervious surfaces (e.g., asphalt trailhead, NE 3rd loop sidewalk, and NE 3rd Avenue).*
2. *To restore and sustain natural watershed processes that will reduce the impact of stormwater on water quality and aquatic habitats in Lacamas Creek and the Washougal River.*
3. *To educate and inform the community about the impacts of stormwater and benefits of healthy riparian zones.*

Project Objectives.

- ❖ *Treat and remove invasive vegetation within 9-acre project area (e.g., Himalayan blackberry, English Ivy, Scotch broom, etc.).*
- ❖ *Plant along the hillside and next to the sidewalk and trail that leads down to the boardwalk.*
- ❖ *Setup five native plant communities within 9-acres of Lacamas Creek's vital riparian-forested floodplain habitat.*
- ❖ *Install native trees, shrubs, and grasses into the five plant communities'.*
- ❖ *Complete a follow-up maintenance of the planting site before the project closes (2024).*
- ❖ *Post two interpretive trail signs at both entrances of the project area (Baz Park Boardwalk).*

Project Details.

1) Invasive vegetation treatment and removal (Hillside)

The first element involves LCFEG working with a consulting firm to develop an invasive vegetation removal and native plant management plan. The firm will also assist with on the ground activities such as invasive vegetation removal, prepping planting areas, installing native plants, and maintenance. The upper hillside of the site, which is adjacent to a couple of impervious surfaces (e.g., asphalt trailhead and NE 3rd loop sidewalk), is dominated by English ivy, Scotch broom, and Himalayan blackberry. We want the contractor to start by focusing their initial efforts on invasive plant removal and eradication on both hillside-planting areas (See planting map). Mechanical and chemical methods will likely be used to remove and kill invasive vegetation. After both hillsides planting areas are free from invasive plants, the

contractor will prep these areas for the installation of native shrubs (e.g., Nootka rose, Salmonberry Indian plum Snowberry, and ninebark).

2) Invasive vegetation treatment and removal (Floodplain)

The second element of the project entails addressing the invasive vegetation growing within the floodplain nearest to the boardwalk. This area of the site is heavily dominated by Reed canary grass that is approximately 1.5'-2.5' tall, along with a few scattered pockets of blackberry. We will have the contractor use the same method of eradication to address this area too. Also in this part of the site, is where we plan to set up our five plant communities (See planting map). After we have treated the Reed canary grass, we will prep the five planting areas by using hand tools to scrape away a 2' x 2' square out of the dead layer of grass to reveal the topsoil. After the squares have been scraped and formed, the contractor or LCFEG (with DOC crew), will apply a native grass seed mix (e.g., perennial grasses, sedges, rushes, bulrushes and other wetland species) to keep the planting squares intact and free from invasive vegetation. We will install that native trees and shrubs later. Apart from the five plant communities, we will also create several debris piles onsite, where all invasive vegetation and grass layers that we have removed will be stored and composted.

3) Install native plants

After the invasive vegetation has been treated and cleared from the planting areas, the third element of this project consists of installing native shrubs along the trail and near the NE 3rd Loop sidewalk. After the areas near the impervious surfaces are planted, we will shift our focus to planting the five communities within the floodplain. A native seed mix will be applied after the plants are installed. This will allow the native grasses to compete with the Reed canary grass. Wetland plants installed in the floodplain will be selected based on their ability to thrive in frequently inundated locations and for their ability to retain chemical laden sediments.

4) Install Trailhead signs

The fourth and final element of this project is to purchase and install two trailhead signs that inform members of the community who frequent the trail about the project and stormwater impacts. The signage will be installed after all other elements of the project have been completed. We will consult with the City of Camas before putting the signs up to establish a location and permission from them to do so. Our preference is to place them at both entrances of the boardwalk.

Scope of Work

Task 1- Complete contracting with LCFRB; Hire consultant; complete riparian restoration design, permitting, cultural resources assessment and landowner agreements. July 2021 thru December 2021.

Task 2- Treat and remove non-native species; Start site prep; establish locations for the five plant communities. January 2022 thru June 2022.

Task 3- Purchase materials (native trees, shrubs, and grass seed); Apply grass seed; perform follow-up maintenance and monitor the site. July 2022 thru October 2022.

Task 4- Complete riparian and wetland plantings; Install two trailhead signs; maintain plantings November 2022 thru January 2024.

Sincerely,
Maurice Frank
Project Manager
(360) 953-1480

FUNDING DOCUMENT FOR: Clark County Clean Water Restoration Fund Program

LOWER LACAMAS CREEK RIPARIAN-PHASE 1

PROJECT LOCATION:

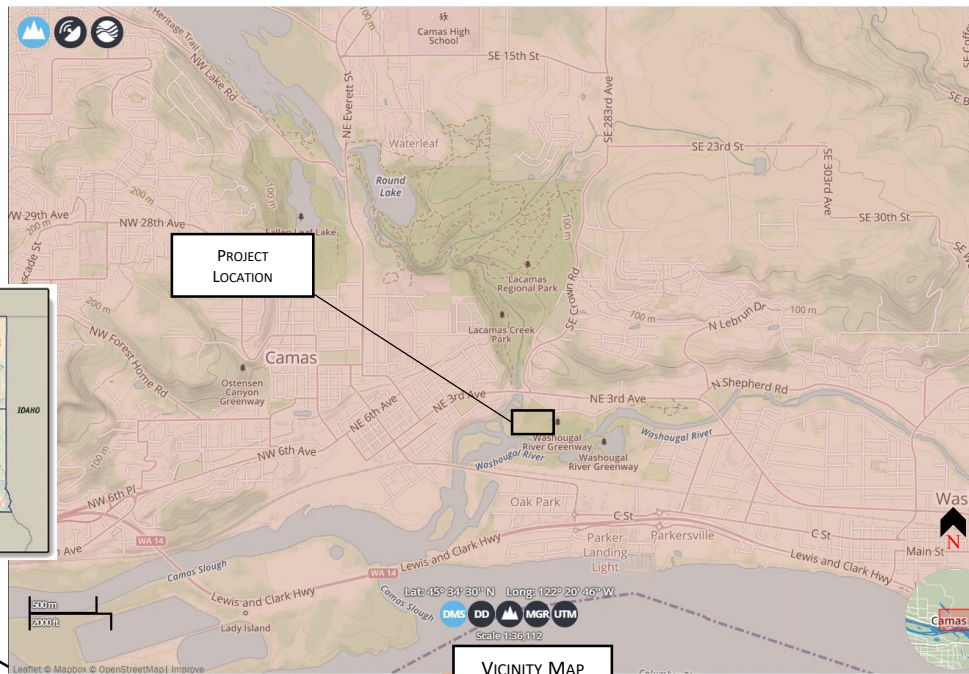
NW 1/4,S12,T1N,R3E
45°35'13.25"N LAT. / 122°23'20.84"W LONG.

DRIVING DIRECTIONS:

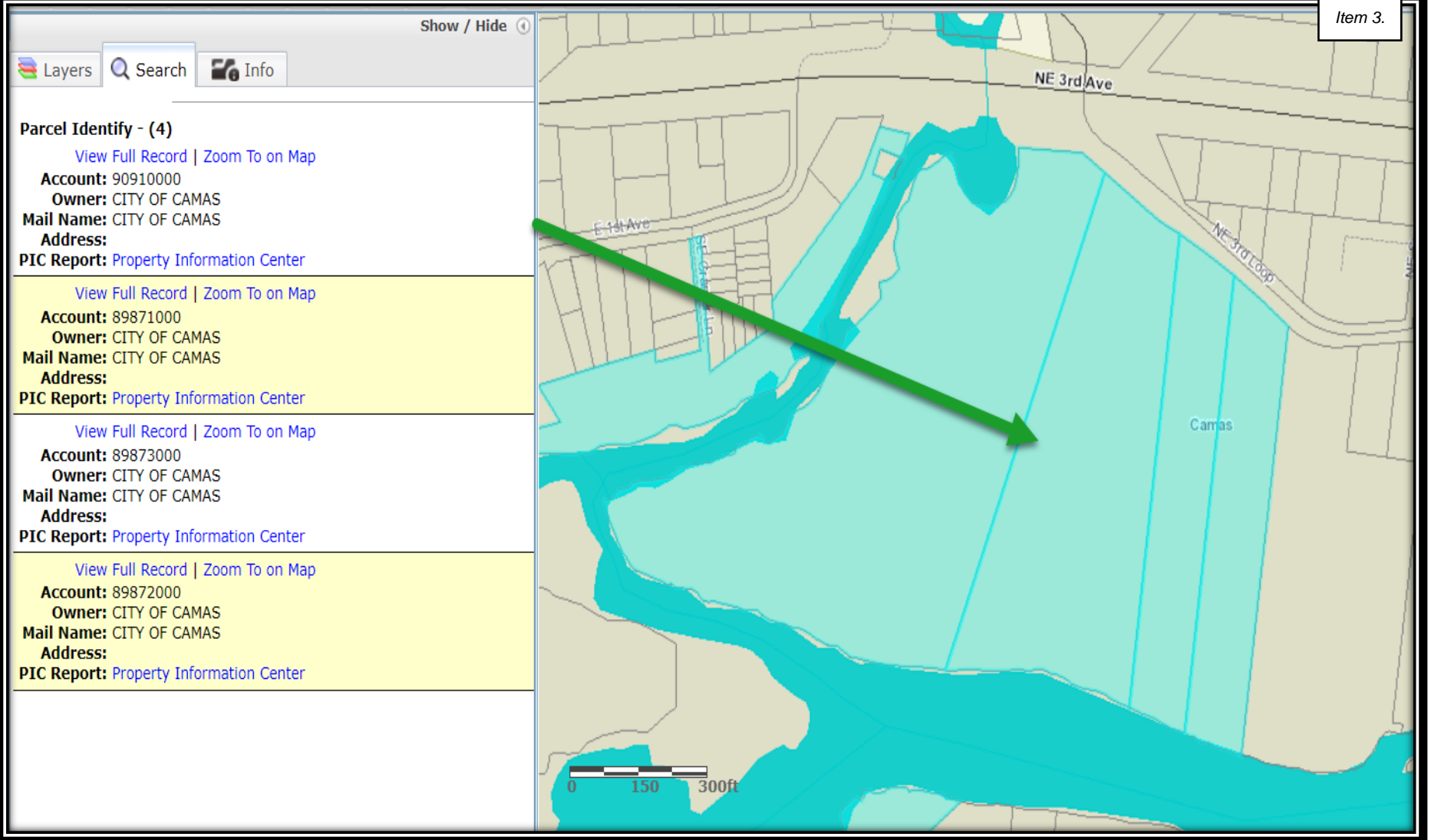
- FROM I-205 Merge onto WA-14 E EAST TO CAMAS (3.5 MILES)
- Take exit 12 toward Camas(0.4 MILES)
- At the traffic circle, take the 2nd exit onto NW 6th Ave(1.0 MILES)
- Turn right onto NE Adams St (0.2 MILES)
- Turn left onto NE 3rd Ave (0.8 miles)
- Slight right onto NE 3rd Loop BAZ Riverfront Park on your right

SHEET INDEX

- 1 COVER, SHEET INDEX, AND VICINITY MAP
- 2 LAND OWNERSHIP MAP
- 3 EXISTING SITE CONDITIONS
- 4 BASE MAP AND PROJECT BOUNDARIES
- 5 REFERENCE SITE CONDITIONS
- 6 PLANTING STRATEGIES – RIPARIAN REVEGETATION



<p>PURPOSE: HABITAT ENHANCEMENT PROJECT TO IMPROVE RIPARIAN CONDITIONS AND SUSTAIN NATURAL WATERSHED PROCESSES THAT WILL REDUCE THE IMPACT OF STORMWATER ON WATER QUALITY AND AQUATIC HABITATS IN LOWER LACAMAS CREEK AND THE WASHOUGAL RIVER.</p> <p>PRIMARY PROPERTY OWNER(S): CITY OF CAMAS</p> <p>CONSULTANT: TBD</p>	<p>SITE LOCATION ADDRESS: NE 3RD LOOP CAMAS, WA 98607 PIN: 90910000; 89873000; 89871000</p> <p>IN: LACAMAS CREEK NEAR: NE 3RD AVE AND WASHOUGAL RIVER STATE: WA COUNTY: CLARK</p>	<p>SPONSOR: LOWER COLUMBIA FISH ENHANCEMENT GROUP</p> <p>PROJECT CONTACT: MAURICE FRANK 360-953-1480</p> <p>PROPOSED GRANT PERIOD: FROM 10/2021 TO 10/2024</p>	
<p>LOWER LACAMAS CREEK DESIGN-PHASE 1</p>		<p>COVER, SHEET INDEX, AND VICINITY MAP</p>	<p>SHEET</p> <p>1</p> <p>8</p>



Existing Conditions



- The hillsides within the site are covered with invasive vegetation (e.g., English ivy, Scotch broom, and Himalayan blackberry).
- Reed canary grass and a few pockets of blackberry dominate the open areas of the floodplain near the boardwalk.
- The site has multiple nearby impervious surfaces that exacerbate negative stormwater impacts.



Item 3.



Lower Lacamas Creek Riparian-Phase1

Planting Map

Item 3.

Legend

- Hillside Planting Area 1
- Hillside Planting Area 2
- Impervious Surface
- Plant Community 1
- Plant Community 2
- Plant Community 3
- Plant Community 4
- Plant Community 5
- Planting Area



Lower Lacamas Creek Riparian-
Phase 1



Base Map and Project
Boundaries

Sheet

4

11

Reference Sites: Forested Wetland

Item 3.



Forested wetland with vertical plant diversity



Gary Oak (*Quercus garryana*) growing next to Oregon Ash (*Fraxinus latifolia*)



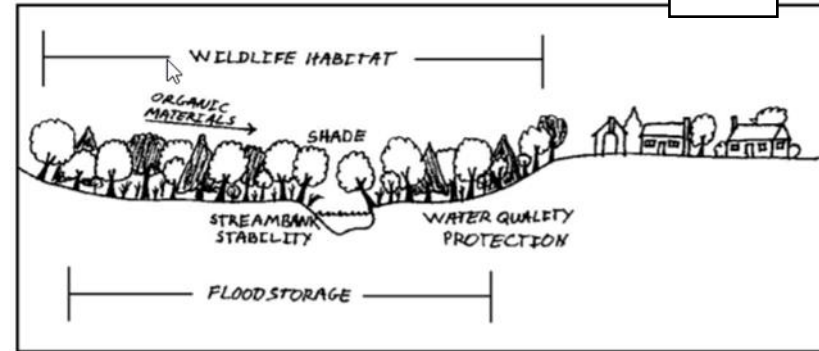
Thicket of red-osier dogwood (*Cornus stolonifera*)



Forested wetland during annual inundation

Planting Strategy for Riparian Re-vegetation

- Use a 3:1 shrub-to-tree ratio (CONCEPTUAL)
- Setup five native plant communities
- Utilize dense planting strategy
- Plant in clusters to improve forested wetland
- Reseed with low-profile native grasses to reduce competition



This image shows the common functions of riparian areas. Figure 1.2-a, from Cruz et al. 2003 (USDA)



Reference site image: Forested Wetland

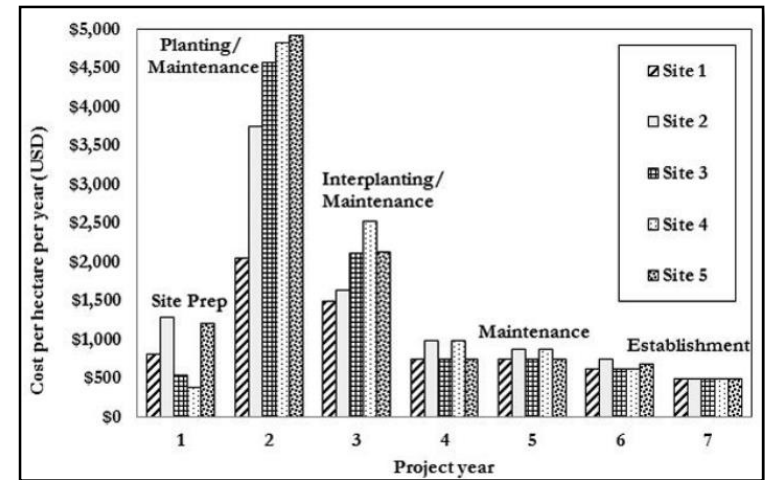


Image shows cost profile over time. Figure 4 from Guillozet et al. 2014

PARKS & RECREATION COMMISSION

Stewardship* Assignment



Last Assigned: March 24, 2021

Commissioners	Park Assigned #1	Park Assigned #2	Park Assigned #3
Katy Daane	Coopers View Park	Dorothy Fox Park	
Dave Dewey	Grass Valley Park	Green Mountain Park	
Brittany Grahn	Goot Park	Skate Park	
Jason Irving	Forest Home Park	Prune Hill Sports Park	Louis Block Park
Dario Izarraras			
Steve Lorenz	Crown Park		
Cassi Marshall	Benton Park	Fallen Leaf Lake Park	
Ellen Burton	Klickitat Park		

Parks without assignments -

- Cemetary
- Heritage Park
- Oak Park

***Stewardship** definition: the responsible overseeing and protection of something considered worth caring for and preserving