



**Advisory Committee on People with
Disabilities Agenda**

Wednesday, May 27, 2026
6:00 PM

City Hall - 141 W. Renfro
Burleson, TX 76028

1. **CALL TO ORDER**

2. **CITIZEN APPEARANCES**

Each person in attendance who desires to speak to the Committee on an item NOT posted on the agenda, shall speak during this section. A speaker card must be filled out and turned in to the City Secretary prior to addressing the Committee. Each speaker will be allowed three minutes to speak.

Each person in attendance who desires to speak on an item posted on the agenda shall speak when the item is called forward for consideration.

3. **GENERAL**

A. Consider and take possible action on the minutes from the January 15, 2026, Advisory Committee on People with Disabilities meeting. *(Staff Contact: Cheryl Marthiljohni, Director of Human Resources)*

4. **REPORTS AND PRESENTATIONS**

A. Receive a report and hold a discussion on the ADA Transition project presented by Engineering Planning and Design Consultants, Kimley-Horn. *(Staff Contact: Cheryl Marthiljohni, Director of Human Resources)*

B. Receive a report and hold a discussion on the Special Needs Cohort presented by the city's Parks and Recreation Department. *(Staff Contact: Cheryl Marthiljohni, Director of Human Resources)*.

5. **REQUESTS FOR FUTURE AGENDA ITEMS AND REPORTS**

6. **ADJOURN**

(Staff Contact)

CHERYL MARTHILJOHNI

Human Resources

Director of Human Resources/ADA Coordinator

cmarthiljohni@burlesontx.com

Phone: (817) 426-9641

CERTIFICATE

I hereby certify that the above agenda was posted on this the 14th of May 2026, by 5:00 p.m., on the official bulletin board at the Burleson City Hall, 141 W. Renfro, Burleson, Texas.

Amanda Campos

City Secretary



ACCESSIBILITY STATEMENT

The Burleson City Hall Annex is wheelchair accessible. The entry ramp is located in the front of the building, accessible from Warren St. Accessible parking spaces are also available in the Warren St. parking lot. Sign interpretative services for meetings must be made 48 hours in advance of the meeting. Call the A.D.A. Coordinator at 817-426-9600, or TDD 1-800-735-2989.

Advisory Committee on People with Disabilities
January 15, 2026
MINUTES

ROLL CALL

MEMBERS PRESENT:

Tina Michael
 Melissa Addyman
 Booke Wilson

MEMBERS ABSENT:

Jason Hollins
 Queyanna Smith
 Derek Taylor
 Peggy Corino

Staff present

Matt Ribitzki, Deputy City Attorney
 Cheryl Marthiljohni, Director of Human Resources

1. CALL TO ORDER – 6:05 PM

2. CITIZEN APPEARANCES

- None

3. GENERAL

A. Administer the oath of office and statement of officer to newly appointed and reappointed members. (Staff presenter: Lisandra Leal, Assistant City Secretary).

Cheryl Marthiljohni, Director of Human Resources administered the oath of office and statement of officer to Tina Michael, Place One.

B. Elect a Chair and Vice Chair to serve for the current board year. (Staff Contact: Cheryl Marthiljohni, Director of Human Resources)

Brooke Wilson was elected Chair and Tina Michael was elected Vice Chair to serve for the current board year.

Motion made by Booke Wilson, and second by Tina Michael to elect Brooke Wilson as Chair and Tina Michael as Vice-Chair.

Motion passed 3-0.

C. Consider approval of the minutes from the March 25, 2024 meeting. (Staff Contact: Cheryl Marthiljohni, Director of Human Resources)

Motion made by Brooke Wilson, and second by Tina Michael to approve the minutes from the March 25, 2024 meeting.

Motion passed 3-0.

4. REPORTS AND PRESENTATIONS

A. Receive a report and hold a discussion on the ADA Transition project scope and plan development presented by Engineering Planning and Design Consultants, Kimley-Horn. (Staff Contact: Cheryl Marthiljohni, Director of Human Resources).

Matt Pool, PE, with Kimley-Horn provided a report to the committee on the city's ADA Transition project scope and plan development, including the work being done with DaxBot, the company who has the ADA accessibility robots.

- The committee was in favor of the presentation and direction.

5. REQUEST FOR FUTURE AGENDA ITEMS AND REPORTS

- None

6. ADJOURN

Motion made by Brooke Wilson, and second by Tina Michael to adjourn the meeting.

Motion passed 3-0.

Cheryl Marthiljohni
Director of Human Resources/ADA Coordinator

City of Burleson ADA Transition Plan Update

Advisory Committee on
Persons with Disabilities

January 15, 2026



Agenda

- Introductions
- Goals and Objectives
- ADA Background
- City of Burleson ADA Transition Plan
- Committee and Public Input
- Project Schedule
- Questions & Comments

Introductions



City Staff

- Burleson Staff



Consultant Team

- Kimley-Horn
- Daxbot



Goals and Objectives

ADA TP

Improve accessibility and connectivity for all citizens


Encourage participation from public and disabled community

Educate City staff and the public on the requirements of the ADA

Develop a comprehensive list of accessibility barriers

City's Existing ADA Compliance Plan

- The City has previously developed an initial ADA Compliance Plan
 - Identified programs and facilities subject to ADA compliance
 - No program or facility evaluations have been completed
- Latest draft was prepared the end of last year
- This project will build upon the City's existing ADA Compliance plan to form a comprehensive ADA Self-Evaluation and Transition Plan



DRAFT

THE CITY OF
BURLESON
TEXAS

2025 ADA
Compliance
Plan

ADA Legal Background

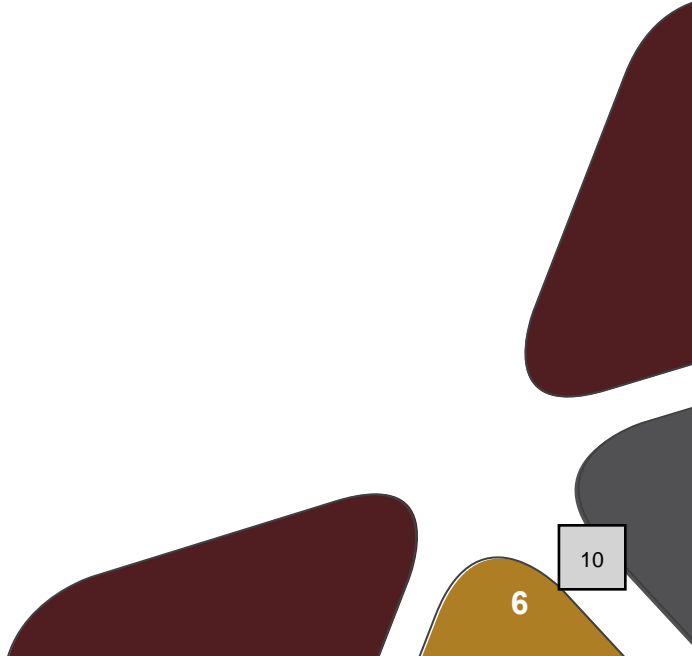
- Architectural Barriers Act (ABA) of 1968

- Rehabilitation Act of 1973
 - Section 504 (49 CFR Part 27)

- Civil Rights Restoration Act of 1987

- Americans with Disabilities Act (ADA) of 1990
 - Title II Regulations (28 CFR Part 35)

- Elimination of Architectural Barriers
 - Texas Statute in Government Code, Chapter 469
 - Texas Department of Licensing and Regulation (TDLR)



ADA Background – Five Titles of ADA

- Title I** Employment
- Title II** **State & Local Governments (28 CFR Part 35)**
- Title III** Public Accommodations (retail, commercial, sports complexes, movie theaters, et al) (28 CFR Part 36)
- Title IV** Telecommunications
- Title V** Misc., including requirements for the U.S. Access Board to develop design guidelines

Title II – State and Local Governments

Basic Requirement

Must ensure that individuals with disabilities are not excluded from programs, services, and activities (pedestrian facilities are an example of a program)



Transition Plan Requirements

- Identify obstacles that limit the accessibility of programs or activities
 - **Physical barriers** at facilities in the public rights-of-way (sidewalks, curb ramps, pedestrian street crossings, signalized intersection equipment)
 - **Programmatic barriers** for services, activities, communication, and digital elements
- Describe in detail the methods that will be used to make the facilities accessible.
- Specify a yearly schedule for implementing the accessibility improvements identified in the Transition Plan.
- Include the name or position of the official who is responsible for implementing the Transition Plan.

ADA/504 Coordinator

- Person must be familiar with agency operations
- Person must be trained or knowledgeable in ADA and other nondiscrimination laws (Title VI, Title VII)
- Person must have sufficient authority, time, and resources to accomplish the duties
- Possible needs for others to have ADA responsibilities, but **ONE PERSON IN CHARGE**

ADA Coordinator

Cheryl Marthiljohni

ADA Coordinator and Director of Human Resources

225 W Renfro St

Burleson, TX 76028

Phone: 817-426-9640

Email: ADA@burlesontx.com

ADA Liaison Committee

- Internal: City Staff only
- Meet throughout the process of completing the Self-Evaluation and developing the Transition Plan
- Provide feedback on the project
- Continue to meet and actively participate after the completion of this project

ADA Policy Notice Requirements

- City must make information available to the public indicating that the ADA applies to City services, programs, and activities
- City must post this information in public areas or make it available in other ways deemed necessary
- City must make ADA Notice available in alternate formats (i.e., large print, Braille, audio, etc.)
- ADA Notice must include name and contact information of ADA Coordinator

ADA Policy Notice

- <https://www.burlesontx.com/2867/Americans-with-Disabilities-Act>

Home > Departments > Human Resources > Americans with Disabilities Act

Americans with Disabilities Act

American with Disabilities Act (ADA) and Accessibility

In accordance with the requirements of Title II of the Americans with Disabilities Act of 1990 ("ADA") and Section 504 of the Rehabilitation Act of 1973, the City of Burleson does not discriminate against individuals with disabilities in its services, programs, or activities. *For more information about ADA or Accessibility, to request an accommodation or to file a complaint, please see the information below or contact the **ADA Coordinator**.*

- ADA Public Notice ([English](#) / [Español](#))

ADA Policy Notice

THE CITY OF
BURLESON
TEXAS

PUBLIC NOTICE UNDER THE AMERICANS WITH DISABILITIES ACT AND SECTION 504

In accordance with the requirements of title II of the Americans with Disabilities Act of 1990 ("ADA") and Section 504 of the Rehabilitation Act of 1973 ("Section 504"), the City of Burleson ("the City") will not discriminate against qualified individuals with disabilities on the basis of disability in its services, programs, or activities.

Employment: The City does not discriminate on the basis of disability in its hiring or employment practices and complies with all regulations set forth by the U.S. Equal Employment Opportunity Commission under title I of the ADA and Section 504.

Effective Communication: The City will generally, upon request, provide appropriate aids and services leading to effective communication for qualified persons with disabilities so they can participate equally in the City's programs, services, and activities, including qualified sign language interpreters, documents in Braille, and other ways of making information and communications accessible to people who have speech, hearing, or vision impairments.

Modifications to Policies and Procedures: The City will make all reasonable modifications to policies and programs to ensure that people with disabilities have an equal opportunity to enjoy all of its programs, services, and activities. For example, individuals with service animals are welcomed in the City's offices, even where pets are generally prohibited.

Anyone who requires an auxiliary aid or service for effective communication, or a modification of policies or procedures to participate in a program, service, or activity of the City, should contact the **ADA Coordinator** as soon as possible but no later than 48 hours before the scheduled event.

The ADA does not require the City to take any action that would fundamentally alter the nature of its programs or services, or impose an undue financial or administrative burden.

Complaints that a program, service, or activity of the City is not accessible to persons with disabilities should be directed to the **ADA Coordinator**.

ADA Coordinator Name and Contact Information:

| | |
|----------|--|
| Name: | Cheryl Marthiljohni, Director of Human Resources |
| Address: | The City of Burleson, 141 W Renfro Street, Burleson, TX 76028-4296 |
| Email: | ADA@burlesontx.com |
| Phone: | 817-426-9640 |
| Fax: | 817-295-9414 |

The City will not place a surcharge on a particular individual with a disability or any group of individuals with disabilities to cover the cost of providing auxiliary aids/services or reasonable modifications of policy, such as retrieving items from locations that are open to the public but are not accessible to persons who use wheelchairs.

burlesontx.com | 817.426.9640 | 141 W. Renfro Street, Burleson, Texas 76028

Revised: July 2, 2025

THE CITY OF
BURLESON
TEXAS

AVISO PÚBLICO EN VIRTUD DE LA LEY DE ESTADOS UNIDOS CON DISCAPACIDADES Y LA SECCIÓN 504

De conformidad con los requisitos del título II de la Ley de Estadounidenses con Discapacidades de 1990 («ADA») y la sección 504 de la Ley de Rehabilitación de 1973 («Sección 504»), la ciudad de Burleson («la ciudad») no discriminará a las personas cualificadas con discapacidades por motivos de discapacidad en sus servicios, programas o actividades.

Empleo: La Ciudad no discrimina por motivos de discapacidad en sus prácticas de contratación o empleo y cumple con todas las regulaciones establecidas por la Comisión para la Igualdad de Oportunidades en el Empleo de los Estados Unidos en virtud del título I de la ADA y la Sección 504.

Comunicación eficaz: Por lo general, la Ciudad proporcionará, previa solicitud, las ayudas y servicios adecuados que permitan una comunicación eficaz a las personas cualificadas con discapacidades, de modo que puedan participar en igualdad de condiciones en los programas, servicios y actividades de la Ciudad, incluyendo intérpretes de lengua de signos cualificados, documentos en braille y otros medios para que la información y las comunicaciones sean accesibles a las personas con discapacidades del habla, la audición o la visión.

Modificaciones de las políticas y procedimientos: La ciudad realizará todas las modificaciones razonables en sus políticas y programas para garantizar que las personas con discapacidades tengan las mismas oportunidades de disfrutar de todos sus programas, servicios y actividades. Por ejemplo, las personas con animales de servicio son bienvenidas en las oficinas de la ciudad, incluso en aquellos lugares donde normalmente se prohíben las mascotas.

Cualquier persona que necesite ayuda o servicios auxiliares para comunicarse de manera eficaz, o una modificación de las políticas o procedimientos para participar en un programa, servicio o actividad de la ciudad, debe ponerse en contacto con **el coordinador de la ADA** lo antes posible, pero no más tarde de 48 horas antes del evento programado.

La ADA no exige a la ciudad que tome ninguna medida que altere fundamentalmente la naturaleza de sus programas o servicios, ni que imponga una carga financiera o administrativa excesiva.

Las quejas sobre la inaccesibilidad de un programa, servicio o actividad de la ciudad de e deben dirigirse al **coordinador de la ADA**.

Nombre y datos de contacto del coordinador de la ADA:

| | |
|---------------------|--|
| Nombre: | Cheryl Marthiljohni, Directora de Recursos Humanos |
| Dirección: | Ciudad de Burleson, 141 W Renfro Street, Burleson, TX 76028-4296 |
| Correo electrónico: | ADA@burlesontx.com |
| Teléfono: | 817-426-9640 |
| Fax: | 817-295-9414 |

La ciudad no aplicará ningún recargo a una persona con discapacidad en particular ni a ningún grupo de personas con discapacidad para cubrir el costo de proporcionar ayudas o servicios auxiliares o modificaciones razonables de la política, como la recuperación de artículos de lugares abiertos al público pero que no son accesibles para personas que utilizan sillas de ruedas.

burlesontx.com | 817.426.9640 | 141 W. Renfro Street, Burleson, Texas 76028

Revisado: 2 de julio de 2025

Grievance Procedure Requirements

- Description of how and where a complaint under Title II may be filed
- Statement notifying potential complainants that alternative means of filing will be available
- Description of the timeframes and processes to be followed by the complainant and the City
- Information on how to appeal an adverse decision
- Statement of how long complaint files will be retained

Grievance Procedure

- <https://www.burlesontx.com/2867/Americans-with-Disabilities-Act>

ADA Complaints:
Any person, group of persons or their authorized representative may file a complaint of ADA accessibility if such person believes that city services, programs, or activities were not accessible.

- ADA Accessibility Complaint Form ([English](#) / [Español](#))
- ADA Accessibility Complaint Process ([English](#) / [Español](#))

Complaints may be filed within 60 calendar days of the incident by completing the ADA Complaint Form and sending to the city in one of the following methods:

- Electronically (online) - ADA@burlesontx.com, or
- In person or mail - City of Burleson - ADA Coordinator, 141 W. Renfro Street, Burleson, TX 76028-4296, or
- Fax - [817-295-9414](tel:817-295-9414)

Grievance Procedure

Item A.

THE CITY OF
BURLESON
TEXAS

The Americans with Disabilities Act (“ADA”) and Section 504 Complaint Form

This ADA and Section 504 Complaint form will be used by the City of Burleson to document and address a complaint for qualified individual(s) with a disability in accessing the City’s programs, services, and/or activities. **For more information, including understanding your rights, please visit <https://www.burlesontx.com/2867/Americans-with-Disabilities-Act>.**

When completed, return this signed form using one of the following methods:

| | |
|---------------------------|--|
| Mail or In-Person: | City of Burleson Attn: ADA Coordinator 141 W Renfro St Burleson, TX 76028 |
| Email: | ADA@burlesontx.com |
| Fax: | (817) 295-9414 |

For assistance or if you require another accessible format, please call the ADA Coordinator at (817) 426-9640 or email ADA@burlesontx.com.

COMPLAINANT INFORMATION

| | |
|------------------------|-------------|
| Last Name: | First Name: |
| Mailing Address: | |
| City/State/Zip Code: | Phone #: |
| Alternate Telephone #: | |
| Email Address: | |

BASIS OF COMPLAINT

Please mark all that apply below to indicate the basis of your complaint:

Accommodation Request Program/Service/Activity Facility Accessibility

Other (please specify) _____

List the date and time of the incident.

List the location or facility involved.

Describe the complaint/incident with as much detail as possible. Add additional pages as necessary.

1

THE CITY OF
BURLESON
TEXAS

The Americans with Disabilities Act (“ADA”) and Section 504 Complaint Form

Names of individuals (witnesses, employees, or others) whom we may contact for additional information to support or clarify your complaint. (Attach additional pages, if needed).

| Name | Mailing address and/or email address | Telephone |
|------|--------------------------------------|-----------|
| | | () |
| | | () |
| | | () |
| | | () |

Has there been any attempt to resolve the matter through a City department? If yes, please describe the effort and provide the name, position, and date of discussion.

Briefly explain what solution or remedy you are seeking.

Please provide any additional information and/or photographs, if applicable, that you believe will assist in the review of this complaint.

THE CITY CANNOT ACCEPT AN UNSIGNED COMPLAINT. PLEASE PRINT YOUR NAME, SIGN, AND DATE THE COMPLAINT FORM BELOW:

| | |
|---|-------|
| Complainant's Printed Name: | Date: |
| Complainant's Signature: | |
| Printed name of person preparing complaint (if different from the complainant): | |
| Relationship to the complainant: | |

For Office Use Only

| | |
|--------------------------|----------------------|
| Date Complaint Received: | Case Number: |
| Received By: _____ | Date Referred: _____ |

2

Scope of Services – Major Tasks

- Task 1 and Task 7:** Project Management and Meetings
- Task 2:** Services, Policies, Practices, Programs, and Activities (Programmatic) Review
- Tasks 3-5:** Facilities and Public Rights-of-Way Review
- Task 6:** Transition Plan Update
- Task 8:** Public Outreach
- Task 9:** Staff Training
- Task 10:** Esri Dashboard Development

Task 2 – PSA (Programmatic) Review

Summarize available online information and meet with City staff to perform ADA Compliance evaluations

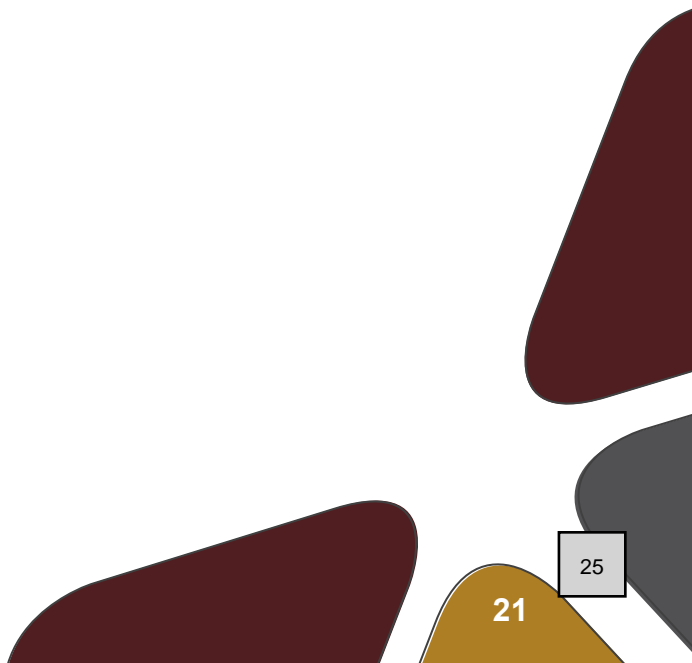
- Programs, services, activities
- Policies, processes, procedures
- Lease agreements
- Contracts
- Department-specific handbooks
- Meeting agendas and minutes
- Online forms
- Applications
- PDF forms
- Checklists
- Videos
- Employment practices
- Ordinances
- Emergency Management Plan

Kimley-Horn to provide a data request list. City to follow up with available information and points of contact for further discussions.

Tasks 3-5: Facilities Review

Facilities for Evaluation

- 17 Buildings and Parking Lots
- 21 Parks and Parking Lots
- 25 Signalized Intersections
- 218 linear miles of Sidewalk Corridors
- Unsignalized intersections, driveways, and alleys
 - Includes curb ramps, pedestrian street crossings



Buildings

| Location Name | Property Address |
|--------------------------|----------------------------|
| City Hall | 141 W Renfro Street |
| City Hall Annex | 135 W. Ellison, Suite 109 |
| Senior Activity Center | 216 SW Johnson Avenue |
| Animal Shelter | 775 SE John Jones Drive |
| Burleson Visitors Center | 124 W Ellison Street |
| Municipal Court | 1131 SW Wilshire Boulevard |
| Hidden Creek Golf Course | 555 E Hidden Creek Pkwy |
| Service Center | 725 S.E. John Jones Road |
| Library | 248 SW Johnson Avenue |

Buildings

| Location Name | Property Address |
|-------------------------------------|------------------------------|
| Burleson Memorial Cemetery | 580 Memorial Plaza |
| Burleson Recreation Center (BRiCK) | 550 NW Summercrest Boulevard |
| Russell Farm | 405 W County Road 714 |
| Mayor Vera Calvin Plaza in Old Town | 141 W Renfro Street |
| Fire Station #3 | 245 Lakewood Drive |
| Fire Station #16 | 250 E Hidden Creek Parkway |
| Fire Station #1 | 828 SW Alsbury Blvd |
| Police Department (Exterior Only) | 1161 SW Wilshire Blvd |

Parks

| Location Name | Property Address |
|---|------------------------------|
| Bailey Lake Park | 280 W Hidden Creek Parkway |
| Bartlett Park and Soccer Complex | 550 NW Summercrest Boulevard |
| Warren Park | 301 SW Johnson Avenue |
| Chisenhall Sports Complex and Trails | 500 W Hidden Creek Parkway |
| Centennial Park | 308 NE McAlister Road |
| Burleson Bark Park | 616 Memorial Plaza |
| Meadowcrest Park | 1050 Barracuda Drive |
| Mistletoe Hill Park | 960 NE McAlister Road |
| Oak Valley Park North & Shared-Use Path | 804 Parkridge Boulevard |
| Cedar Ridge Park | 716 Cumberland Drive |
| Cindy Park | 205 NE Cindy Lane |

Parks

| Location Name | Property Address |
|------------------------|-----------------------------|
| Clark Park | 124 N Clark Street |
| Claudia's Playground | 933 West Bend Boulevard |
| Elk Ridge Park | 1016 Dorsey Street |
| Heberle Park and Trail | 812 Tyler Court |
| Hidden Vistas Park | 950 Hidden Vistas Boulevard |
| Prairie Timber Park | 801 Prairie Timber Road |
| Robert Joseph Park | 2780 Greenridge Drive |
| Veterans Memorial Park | 298 E Renfro Street |
| Wakefield Heights Park | 704 Elizabeth Drive |
| Willow Creek Park | 151 Hawks Ridge Trail |

Public Rights-of-Way and Paved Trails

City of Burleson
 ADA Transition Plan Update
 Facility Inventory Map
 October 2025

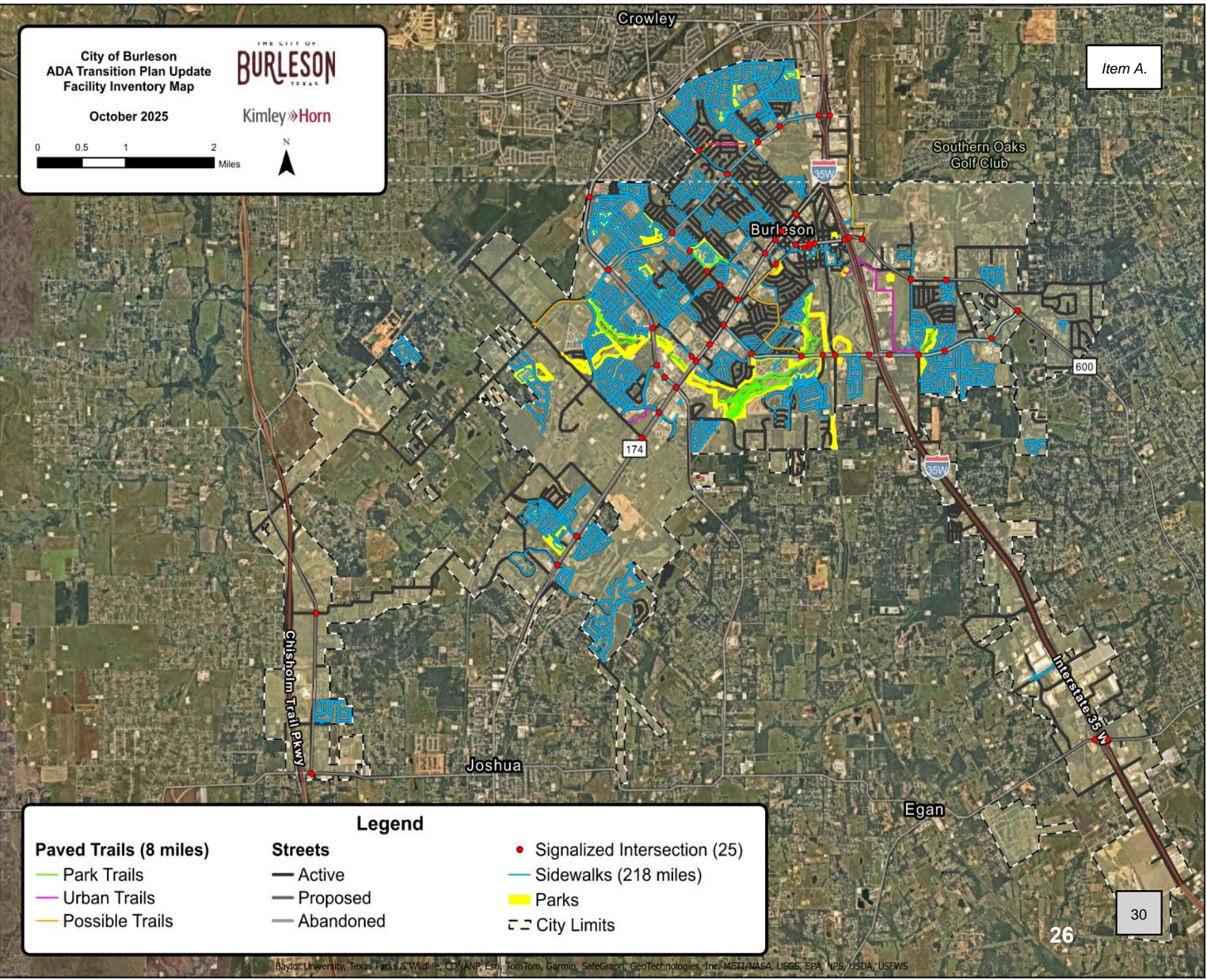
THE CITY OF
BURLESON
 TEXAS

Kimley»Horn

0 0.5 1 2 Miles

N

Item A.







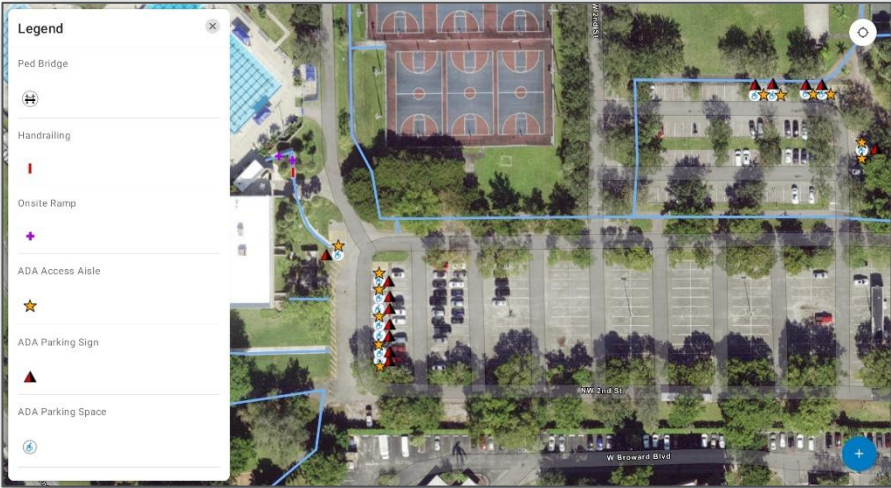
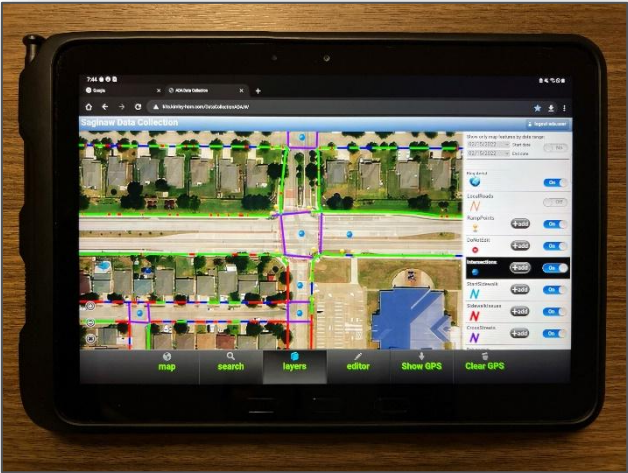
Legend

| | | |
|-------------------------------|----------------|--------------------------------|
| Paved Trails (8 miles) | Streets | ● Signalized Intersection (25) |
| — Park Trails | — Active | — Sidewalks (218 miles) |
| — Urban Trails | — Proposed | ■ Parks |
| — Possible Trails | — Abandoned | ⊞ City Limits |

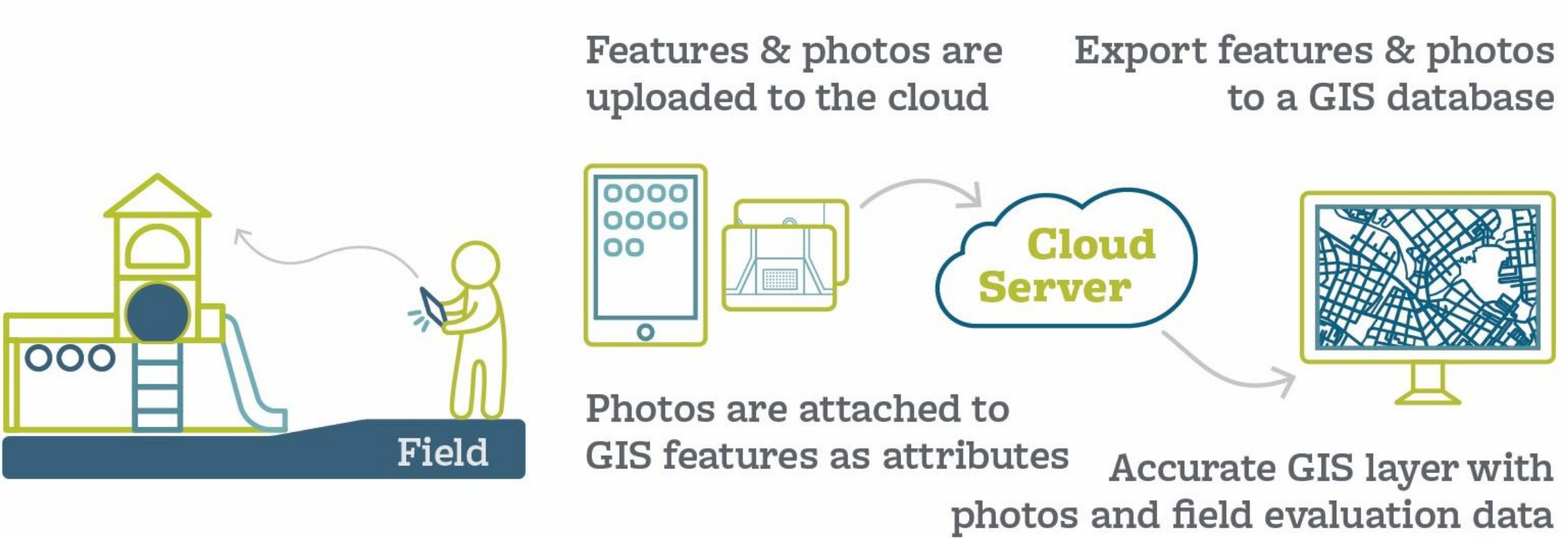
Baylor University, Texas Parks & Wildlife, CONANP, Esri, TomTom, Garmin, SafeGraph, GeoTechnologies, Inc., METI/NASA, USGS, EPA, NPS, USDA, USFWS

Park and Building Data Collection

-  An integrated, fully customizable data collection field form
-  Integrated digital camera
-  Photographs and data that synchronize in real time with GIS
-  Reduction in human error with in-field quality control checks



Data Collection Process





Public Rights of Way Data Collection – Daxbot Technology

- Semi-autonomous robot data collection
- GPS and laser measurement tools
- High-resolution cameras

Kimley-Horn to coordinate with City regarding data collection schedule, logistics, and details



Public Rights of Way Data Collection – Daxbot Technology

Item A.

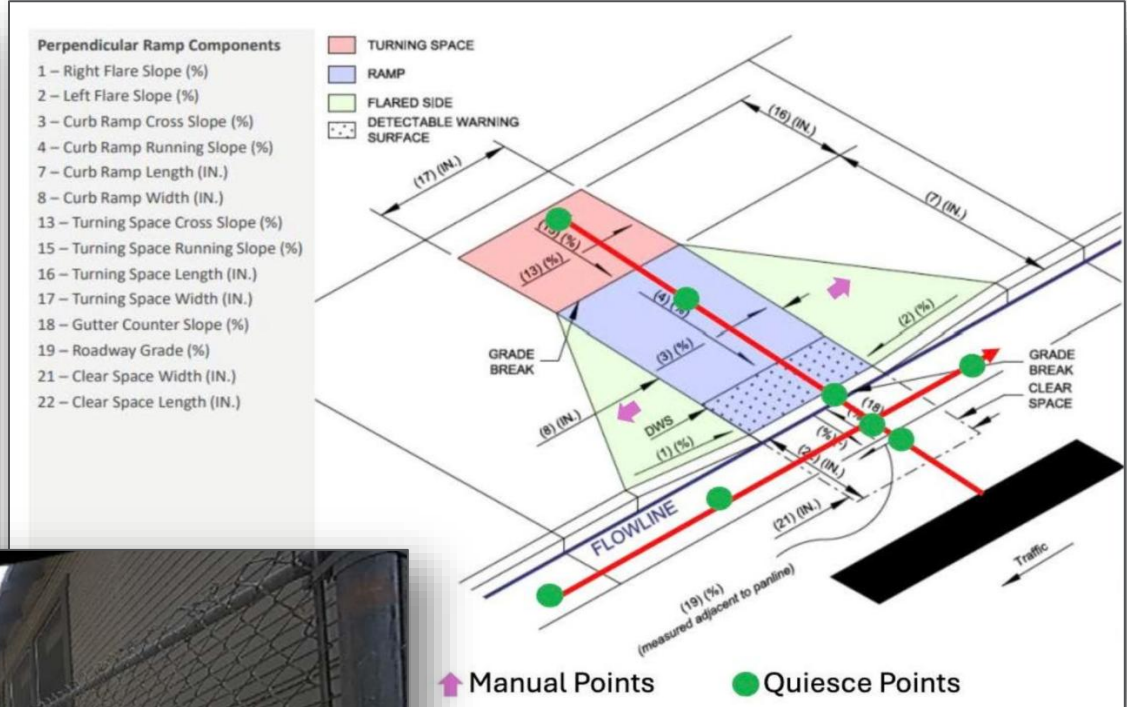
Map View Slab View Path View List View Jira Tickets

Path: 477
Slab: 18
Collected On: Smoky
Trajectory Length: 160.477 m
Pitch: -0.015°
Roll: 1.364°
Heading: -176.970°
Slab L.Q.E.: 100.0%

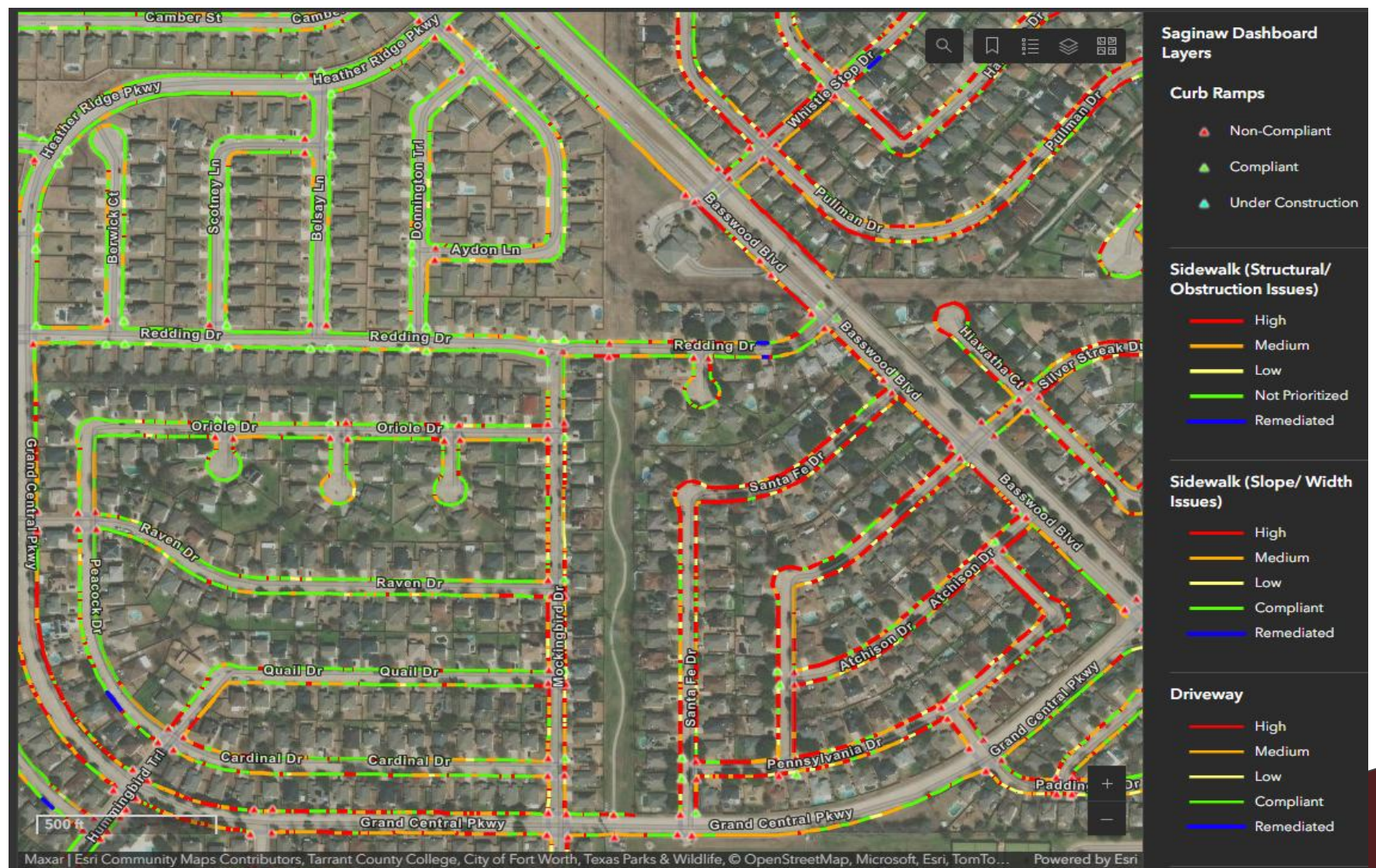
Vertical Obstruction: Vegetation X
Slab Width (m): 50.760 X
Travel Path Width (m): 28.267 X
Primary Surface Material: Concrete X
Damage Area (sq ft): 12,700 X
Curb Ramp Slab Type: Not Applicable X
Slab Type Indicator: Not Applicable X

Vertical Displacement (mm)
Vertical Displacement RMS (mm)

Power N/A (e)
Vertical Obstructions (v)
Slab Width (w)
Travel Path Width (t)
Primary Surface Material (r)
Damage Area (d)
Curb Ramp Slab Type (c)
Slab Type Indicator (s)



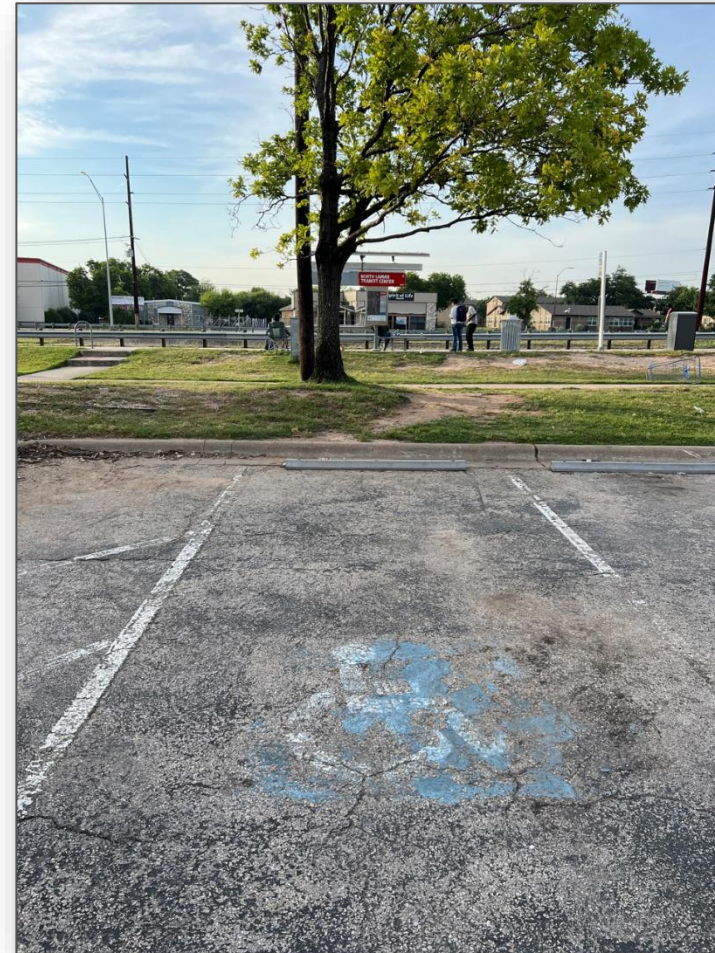
ADA Transition Plan Database



Sample Building and Parking Lot Issues

- **Parking**
 - Accessible parking spaces that do not have access aisles or signage
- **Entrances**
 - Excessive slopes to building entrances
- **Exterior conditions**
 - Building exterior amenities with no accessible routes to them
- **Interior conditions**
 - Restrooms, high transaction counters, doorknobs instead of levers, narrow doors, no access to stages

Non-compliant Parking



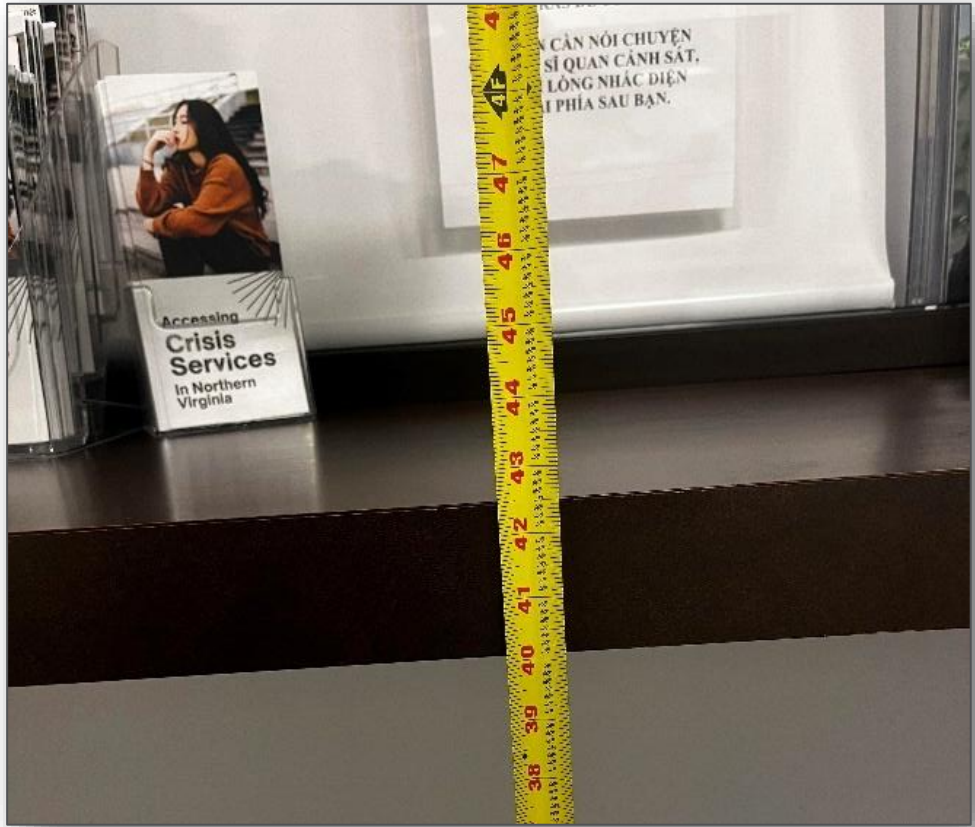
Note: Images are examples only and not from the City of Burleson

Non-compliant Entrances



Note: Images are examples only and not from the City of Burleson

Non-compliant Counters



Note: Images are examples only and not from the City of Burleson

Non-compliant Restrooms



Note: Images are examples only and not from the City of Burleson

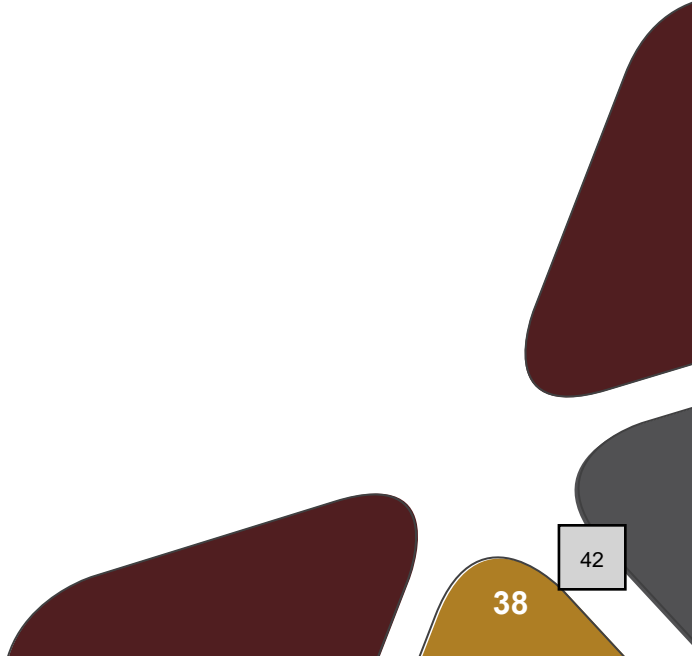
Non-compliant Doors



Note: Images are examples only and not from the City of Burleson

Sample Park Issues

- **Parking**
 - Excessive slopes
 - Missing signage
- **Accessible routes**
 - Non-compliance surfaces
 - Missing access to amenities
- **Playgrounds/Ball Fields**
 - Missing access to play area or ball field
 - Non-compliant play area surfaces
- **Amenities**
 - Missing clear spaces or connections



No Access to Playgrounds



Note: Images are examples only and not from the City of Burleson

No Access to Amenities



Note: Images are examples only and not from the City of Burleson

Example Sidewalk Barriers



Note: Images are examples only and not from the City of Burleson

Example Curb Ramp and Signal Equipment Barriers

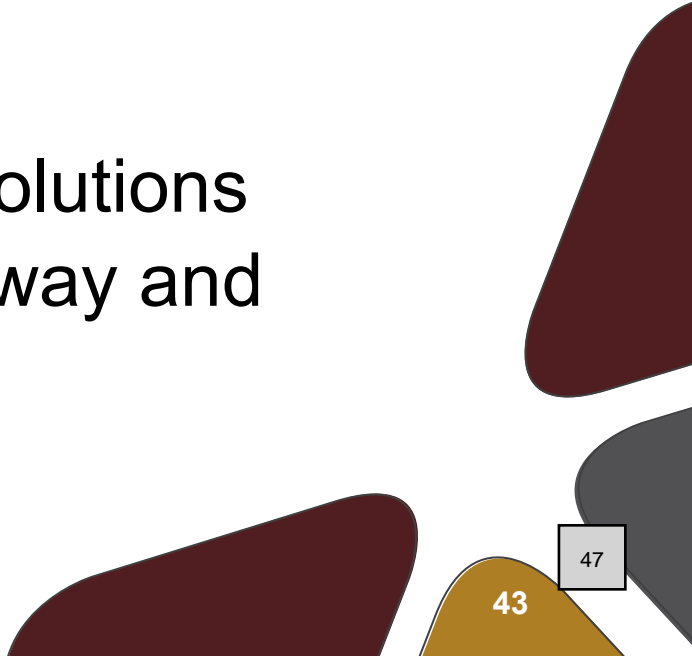


Note: Images are examples only and not from the City of Burleson

Task 6 – Transition Plan Update

Update the City’s ADA Compliance Plan to a comprehensive ADA Self-Evaluation and Transition Plan

- Document administrative requirements
 - ADA/504 Coordinator’s roles and responsibilities
 - Grievance policy, procedure, and complaint form
 - ADA Notice
- Document PSA review findings and possible solutions
- Develop multi-year budget for public rights-of-way and building/park accessibility improvements



Transition Plan Development



Prioritize improvements



Develop improvement costs



Develop implementation schedule



Task 8 – Public Outreach

Goals

- Introduce the project
- Help prioritize facilities to be remediated during implementation of the improvements identified in the Transition Plan
- Gather input regarding accessibility concerns/issues

Task 8 – Public Outreach

Major Tasks

1. **Meet with the City’s Advisory Committee on People with Disabilities**
 - Three meetings to 1) introduce the project, 2) receive input on the self-evaluation and facility assessments, and 3) receive input on the draft Transition Plan deliverables

2. **Online public access survey and mapping tool**
 - Administer through the City’s website, social media, etc.
 - Send to Advisory Committee and distribute through organizations

Task 8 – Public Outreach

13. Have you encountered any other accessibility-related challenges/concerns related to the public rights-of-way within the City of Boerne not covered by the questions above?

Yes

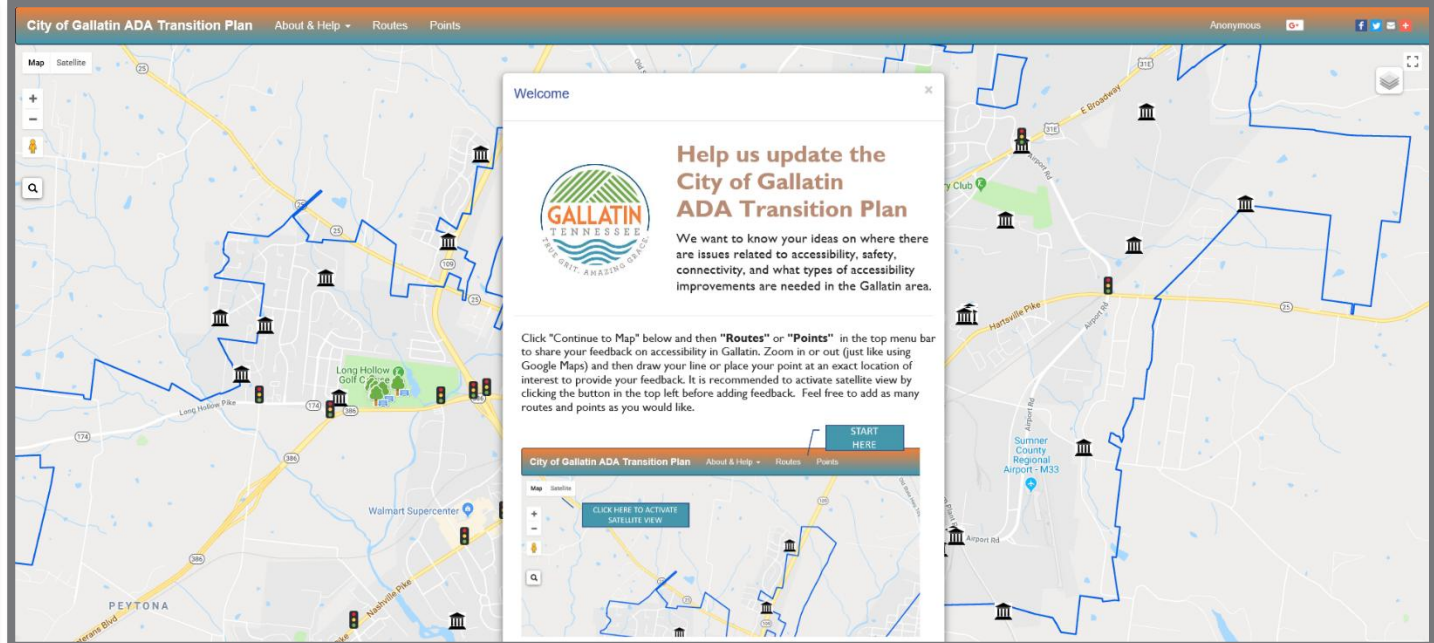
No

No, but someone I know has.

Please explain and provide specific locations:

67%

Prev Next



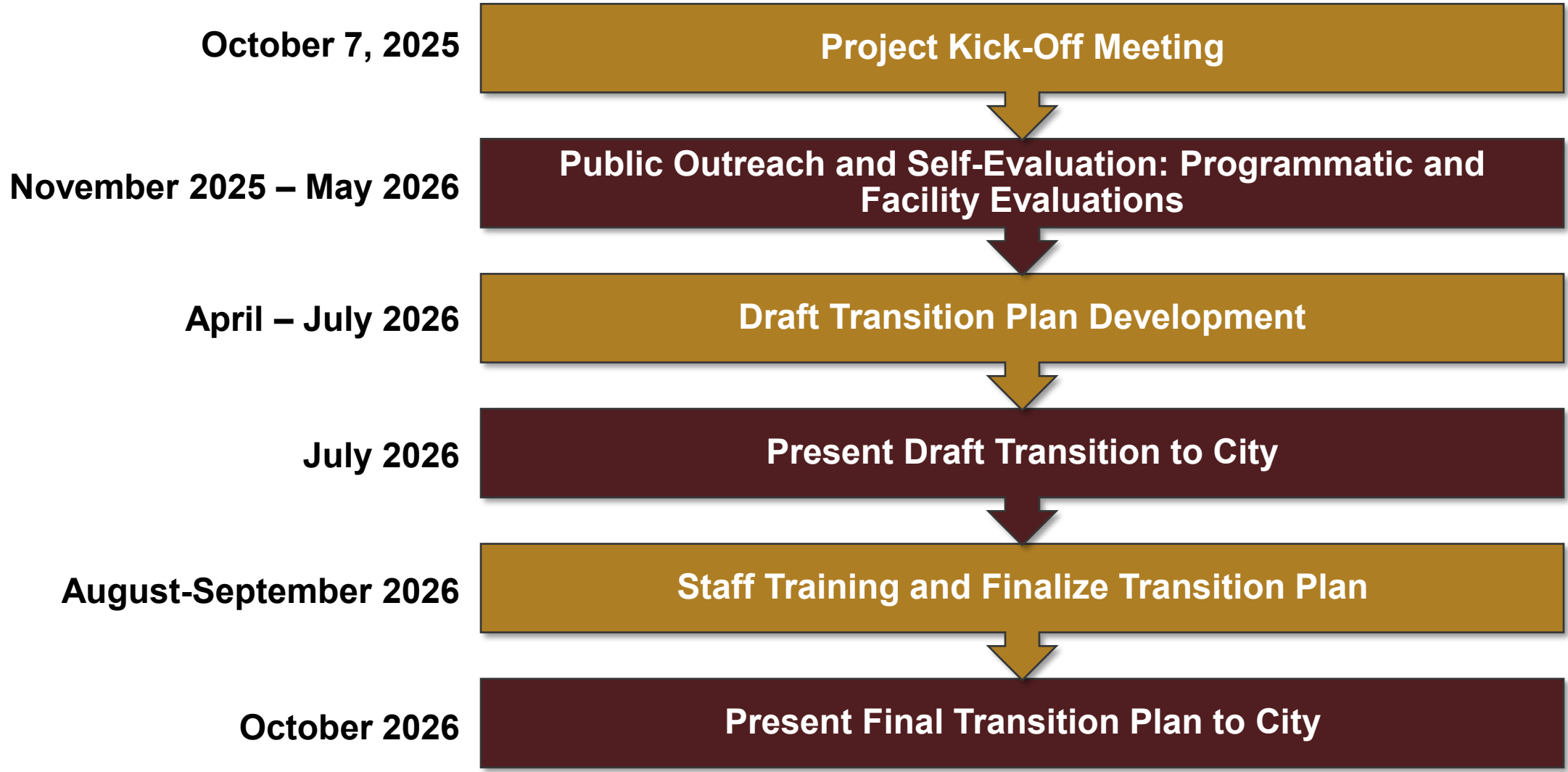
Online Survey

Online Mapping Tool

Confirm project points of contact for public outreach.

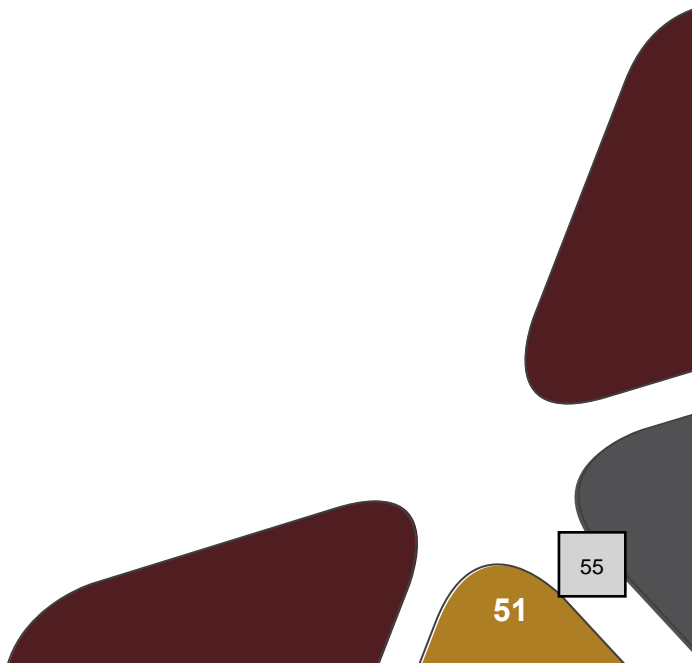
Proposed Project Schedule

Item A.



We Need Your Input

- Questions and concerns?
- How is the City doing regarding accessibility?
- Process
- Public accommodations
- Specific facilities or locations
- High priority areas
- Website and other communication tools
- Suggested improvements



City of Burleson ADA Transition Plan Update

Advisory Committee on
Persons with Disabilities

January 15, 2026

