
Live Stream at <https://www.burlesontx.com/watchlive>

City Hall Council Chambers, 141 W. Renfro, Burleson, TX 76028

1. **CALL TO ORDER**

2. **REPORTS AND PRESENTATIONS**

- A.** Receive a report, hold a discussion and provide staff direction regarding Christmas Tree lighting events. (*Staff Presenter: Jen Basham, Director of Parks and Recreation*)
- B.** Receive a report, hold a discussion, and give staff direction regarding the Mobility Masterplan. (*Staff Presenter: Eric Oscarson, Public Works Director*)
- C.** Receive a report, hold a discussion and give staff direction regarding the Burleson Works program. (*Staff Presenter: Matt Ribitzki, Deputy City Attorney*)

3. **CITIZENS APPEARANCES**

Each person in attendance who desires to speak to the City Council on an item NOT posted on the agenda, shall speak during this section.

A speaker card must be filled out and turned in to the City Secretary prior to addressing the City Council. Each speaker will be allowed three (3) minutes.

Please note that City Council may only take action on items posted on the agenda. The Texas Open Meetings Act prohibits the City Council from deliberating or taking action on an item not listed on the agenda. City Council may, however, receive your comments on the unlisted item, ask clarifying questions, respond with facts, and explain policy.

Each person in attendance who desires to speak to the City Council on an item posted on the agenda, shall speak when the item is called forward for consideration.

4. **RECESS INTO EXECUTIVE SESSION**

Pursuant to Section 551.071, Texas Government Code, the Council reserves the right to convene in Executive Session(s), from time to time as deemed necessary during this meeting for any posted agenda item, to receive advice from its attorney as permitted by law.

A. Pending or Contemplated Litigation or to Seek the Advice of the City Attorney Pursuant to Section 551.071

-Discuss Burleson Police Department Internal Affairs Investigation IA 22-02

B. Discussion Regarding Possible Purchase, Exchange, Lease, or Value of Real Property Pursuant to Section 551.072

- Discuss and receive direction on certain parcels of real property for municipal purposes where deliberation in open session would have a detrimental effect on the position of negotiations with third parties.
- Discuss and receive direction on certain parcels of real property for the expansion of Lakewood Drive where deliberation in open session would have a detrimental effect on the position of negotiations with third parties.
- Discuss and receive direction on certain parcels of real property for the expansion of County Road 1020 where deliberation in open session would have a detrimental effect on the position of negotiations with third parties.

- C. Deliberation regarding a negotiated contract for a prospective gift or donation to the state or the governmental body Pursuant to Section 551.073**
- D. Personnel Matters Pursuant to Section 551.074**
- E. Deliberation regarding (1) the deployment, or specific occasions for implementation of security personnel or devices; or (2) a security audit Pursuant to Sec. 551.076**
- F. Deliberation Regarding Commercial or Financial Information Received from or the Offer of a Financial or Other Incentive made to a Business Prospect Seeking to Locate, Stay or Expand in or Near the Territory of the City and with which the City is conducting Economic Development Negotiations Pursuant to Section 551.087**
- G. Pursuant to Sec 418.183(f), deliberation of information related to managing emergencies and disasters including those caused by terroristic acts (must be tape recorded)**

CERTIFICATE

I hereby certify that the above agenda was posted on this the **27th of July 2022, by 5:00 p.m.**, on the official bulletin board at the Burleson City Hall, 141 W. Renfro, Burleson, Texas.

Amanda Campos
City Secretary



ACCESSIBILITY STATEMENT

The Burleson City Hall is wheelchair accessible. The entry ramp is located in the front of the building, accessible from Warren St. Accessible parking spaces are also available in the Warren St. parking lot. Sign interpretative services for meetings must be made 48 hours in advance of the meeting. Call the A.D.A. Coordinator at 817-426-9600, or TDD 1-800-735-2989.

City Council Regular Meeting

DEPARTMENT:

FROM: Jen Basham, Director of Parks and Recreation

MEETING: August 1, 2022

SUBJECT:

Receive a report, hold a discussion and provide staff direction regarding Christmas Tree lighting events. *(Staff Presenter: Jen Basham, Director of Parks and Recreation)*

SUMMARY:

The Burleson Rotary Club co-sponsored by the City of Burleson hosts an annual Christmas celebration each year. The celebration includes a Christmas parade, tree lighting, and holiday display. This has been a long-standing successful event. This upcoming year will mark 18 years that the event has been conducted. In previous years the city has hosted a fireworks display with the tree lighting. In 2021 it was deemed that due to the increased density in old town, as well as logistics and safety concerns an alternative to fireworks should be created.

Staff researched new technology and found that many organizations and municipalities are beginning to switch to a drone light show to celebrate the tree lighting. The drone show would coordinate with the tree lighting and accompanying music and keep the flow and timing of the event in one place.

An additional option for consideration would be the replacement of fireworks with a laser show. There would not be an increase to the current Christmas event budget to host a laser show. The laser show would only be visible to patrons within the footprint of the plaza.

Staff has outlined the contributions of the Burleson's Rotary Club and the City of Burleson. Moreover, staff is seeking approval of a resolution authorizing sponsorships of the Christmas Drone Display Show and Parade. The total event sponsorship cost is \$34,211. The cost breakdown is:

Parade cost (coordinated by Burleson Rotary Club):
\$5,311 (City cost contribution which covers staffing)

Fireworks cost (coordinated and funded by the City of Burleson):
\$11,000

Drone display cost (coordinated and funded by the City of Burleson):
\$28,900

Laser display cost (coordinated and funded by the City of Burleson):
\$8,877

The net increase to replace the fireworks display with a drone show is \$15,100.

This will be budgeted as part of the FY 2023 budget process.

OPTIONS:

- 1) Recommend approving fireworks
- 2) Recommend approving drone show
- 3) Recommend approving laser show
- 4) Recommend not using fireworks, drone or laser shows in conjunction with the tree lighting

RECOMMENDATION:

Staff recommendations if any

FISCAL IMPACT:

Replacing the fireworks with a laser show would not result in an increased budget. Replacing the fireworks with a drone show would result in a net increase of \$15,100 to the event budget.

STAFF CONTACT:

Jen Basham
Director of Parks and Recreation
jbasham@burlesontx.com
817-426-9201



Christmas in BTX

City Council: August 1, 2022

Staff Presenter: Jen Basham, Director of Parks and Recreation

Background: Christmas Events in Old Town



- **Christmas in BTX: *Parade, Tree-lighting, and Christmas Display***
 - *BTX Christmas Parade: Burleson Rotary*
 - Date/Time: December 3, 2022; Begins at 6:00pm
 - Organizer: Burleson Rotary Club co-sponsored by the City of Burleson
 - *BTX Tree-lighting and Christmas Display*
 - Date/Time: December 3, 2022; Begins at 7:00pm
 - Organizer: City of Burleson sponsored event

Key Information: Christmas Parade

- **Special Event Approval Process: *required for Christmas Parade***
 1. Special Events Application is submitted for review and approval by City of Burleson.
 2. Once reviewed and approved by committee, a special event permit is issued.
 3. Committee is comprised of representatives from police, fire, parks and recreation, communications, and public works department.
- **Event Responsibility Breakdown**

Burleson Rotary Club: Organizes Christmas parade, vendors, and acts as primary event contact.

City of Burleson: Provides Burleson police officers for public safety purposes, street closures, trash cans/pick up, and signage in nearby neighborhood regarding parking.



Item A.



Options for consideration

Proposed Changes to Christmas in Old Town

Item A.



- **Event modification:**
 - Historically, our Christmas events in Burleson have included a parade, tree-lighting ceremony, and a fireworks show.
 - **Event Modification Proposal Options:** Offer a Christmas drone light show (160 drones) or laser show in replacement of fireworks show.
 - **Justification:** The density within old town creates multiple logistical and safety concerns to continue the effort of shooting off fireworks in Old Town.
- **Benefits to convert fireworks to a drone light show or laser show:**
 - Provides logistics solution for better event flow.
 - Reduces event footprint managed by our Police Department.
 - Reduces potential debris hazards and clean up.
- **Drone Show Cost: \$26,100**

Includes: full custom show including syncing to music, custom images, and 160 drones for 9 minutes

Net increase of \$15,100 (original Fireworks show was \$11,000)
- **Laser Show Cost: \$8,877**

Includes 15-minute laser show graphics on large screen and dancing laser beams overhead

No net increase (original Fireworks show was \$11,000)
- **Host fireworks as a separate event on New Years Eve at Chisenhall Fields: \$22,000**

Includes an 18 minute show

Increase of staff cost for additional event: \$15,503.98

Option 1- Drone Show

Item A.

Items to consider:

1. Sky Elements has the proper documentation required to obtain airspace authorization.
2. This option will give the most comparable experience to our previously performed Fireworks show.
3. Citizens will be able to see this display from other locations outside of the Plaza.
4. Burleson Police Department has reviewed and are comfortable with this plan from a logistics and safety component.



Acceptable thresholds:
<20mph sustained windspeed.
<30mph gusting windspeed.
Clouds must be greater than 1,000 feet AGL. Visibility greater than 3 statute miles.

Airspace Class: D

KFWS 1.1mi NE

Note: Requires Airspace Authorization from Fort Worth Spinks Airport.

Note: Barricades only needed during active flight time.



Example Drone Show

Item A.



Option 2- Laser Show

Item A.



Items to consider:

1. Burleson Police Department has approved this plan from a logistics and safety component.
2. Only citizens **within the Plaza** will be able to view the Laser Show causing the event experience to be less comparable to our past offerings.

Example Laser Show

Item A.





Cost comparison

Item A.

- **Current Cost:**

- Public Works (Street Crew): \$689
- Police: \$1,612
- Parks and Recreation: \$3,010
- *Total City Staffing Cost: \$5,311*
- *Total Fireworks Cost: \$11,000*
- **Total event cost: \$16,311**

- **Cost to replace fireworks with drone show:**

- Public Works (Street Crew): \$689
- Police: \$1,612
- Parks and Recreation: \$3,010
- Total City Staffing Cost: \$5,311*
- Total Drone Show Cost: \$26,100 (original: 11k)*
- Total event cost: \$31,411**

Net increase of \$15,100

- **Cost to replace fireworks with laser show:**

- Public Works (Street Crew): \$689
- Police: \$1,612
- Parks and Recreation: \$3,010
- Total City Staffing Cost: \$5,311*
- Total Laser Show Cost: \$8,877 (original: 11k)*
- Total event cost: \$14,188**

No increase to original budget

Option 3- New Years Eve Fireworks at Chisenhall

Item A.



- Host tree lighting and parade without drone, laser, or fireworks
- Host Fireworks to celebrate New Years Eve as a separate event
- **Items to consider:**
 - Additional staff time for Public Works, Parks, Fire, and PD for additional event - **\$15,503.98**
 - Cost of fireworks on New Years Eve - **\$22,000**
 - Net increase- **\$21,192.98**

OPTIONS

Item A.

- **Approve Drone Show**
STAFF RECOMMENDATION
- **Approve Laser Show**
- **Approve Fireworks on New Years Eve**
- **Approve fireworks in conjunction with Christmas parade and tree lighting**



City Council Regular Meeting

DEPARTMENT: Public Works

FROM: Eric Oscarson, Public Works Director

MEETING: August 1, 2022

SUBJECT:

Receive a report, hold a discussion, and give staff direction regarding the Mobility Masterplan.
(Staff Presenter: Eric Oscarson, Public Works Director)

SUMMARY:

Masterplans provide city staff with guidance for capital improvement planning and are typically updated every 2 to 10 years depending on growth within an area. An area experiencing rapid growth such as Burleson, may find updating the masterplans more frequently during the growth beneficial to fiscal planning. The population in Burleson since 2000 has more than doubled. Masterplans are an integral part in future planning to meet the infrastructure needs of the community.

Through various forms of analyses, present and future needs are identified for roadways, water, sewer, and drainage improvements. System improvements are identified and ranked based on a variety of elements related to expected development and growth of the city and surrounding area. Cost estimates for the recommended improvements facilitate effective collaboration with City Council to address needs effectively with fiscal responsibility.

Staff will present the draft mobility plan recommendations to the City Council. The recommendations included in the masterplan are the “blueprint” for responsible, sustainable and planned development that guides the capital improvement plan supporting future economic growth of the city.

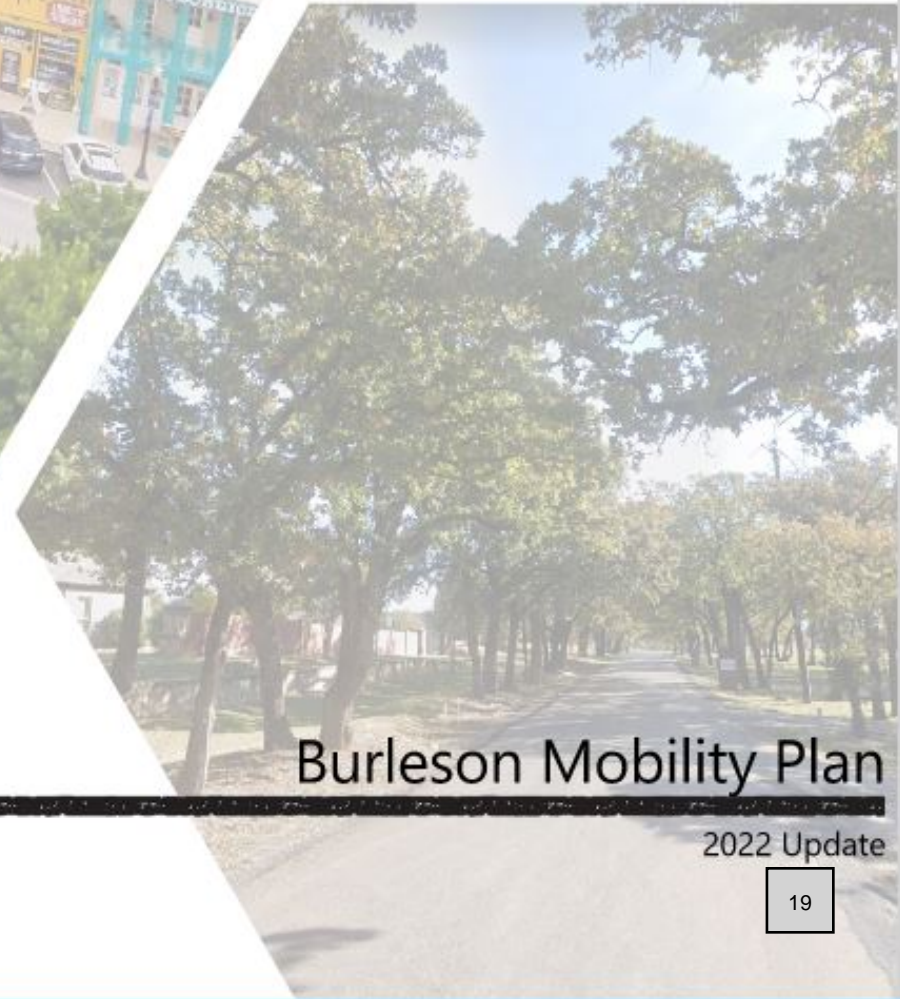
STAFF CONTACT:

Eric Oscarson
Public Works Director
eoscarson@burlesontx.com
817-426-9837

MOBILITY PLAN UPDATE



Item B.



BTX
MOVES

Burleson Mobility Plan

2022 Update

WHY MASTERPLAN?

COMPREHENSIVE PLAN

- April 19, 2010: Imagine Burleson 2030 approved
- November 17, 2020: 2020 Midpoint Update to the 2030 plan approved
- Official guide for making decisions about orderly growth and development
- Establishes goals, objectives, policies, strategies, programs and projects
- Utilized as a guide for zoning decisions
- Provides guidance for budget priorities

MASTERPLANS ARE UNDER THE “UMBRELLA” OF THE COMPREHENSIVE PLAN

Aligns with the Comprehensive Plan goals

Serves as the "blueprint" for infrastructure needs

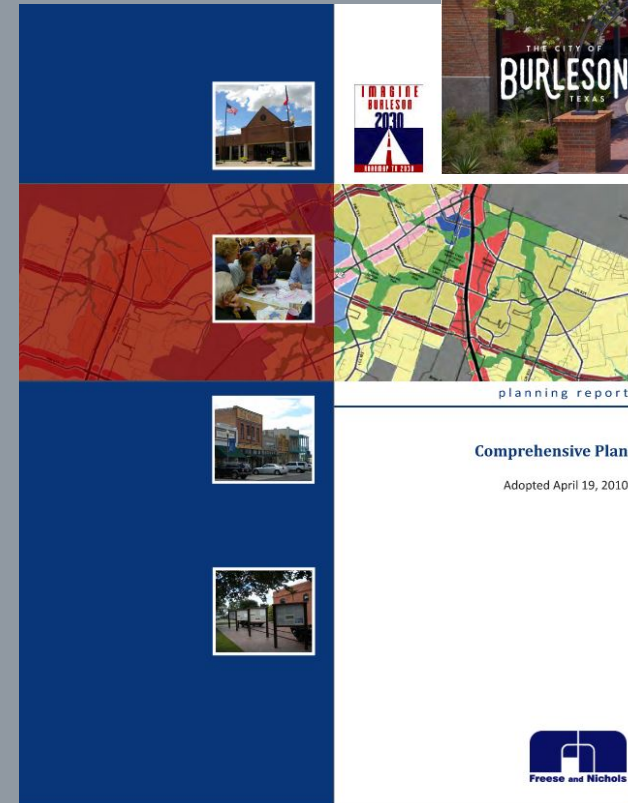
Provides additional guidance for policies and ordinances



Imagine Burleson

Comprehensive Plan

2020 Midpoint Update



ELEMENTS OF MOBILITY MASTERPLAN

Item B.

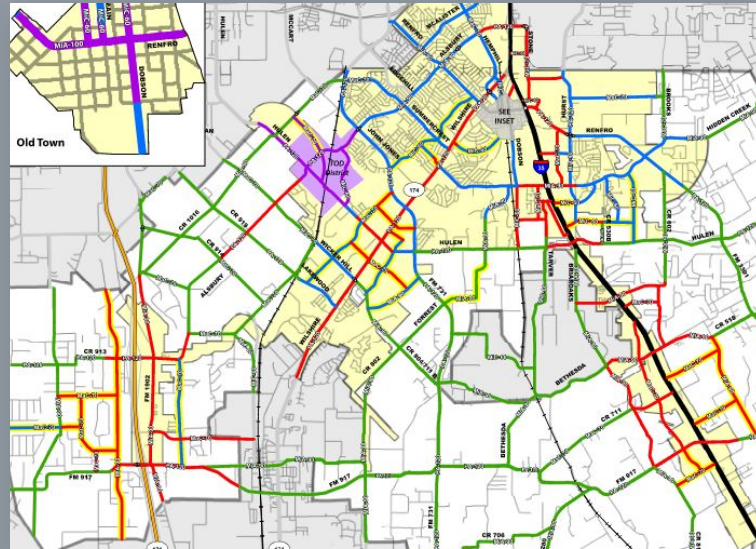


PUBLIC OUTREACH

Interactive Map with survey

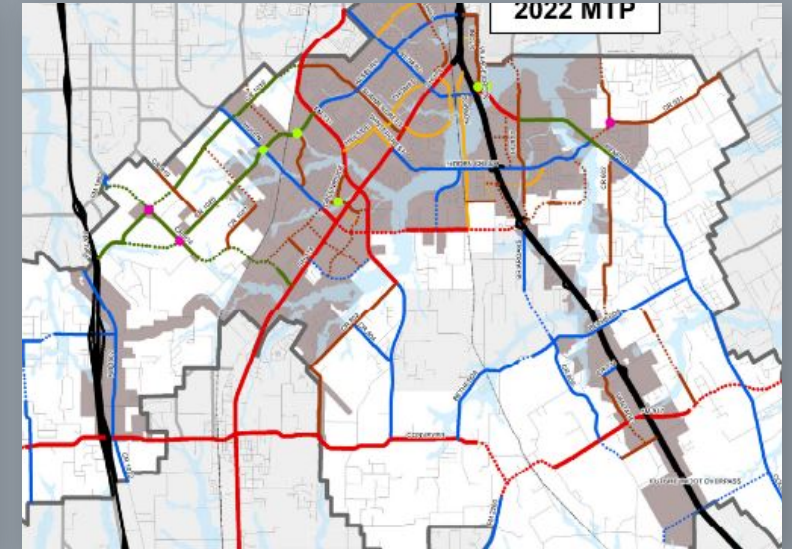
Q-code provided for easy access to website

Goal is to obtain comments / suggestions from public to incorporate into plan



EXISTING SYSTEM ANALYSIS

Identify areas of existing capacity issues



GROWTH ANALYSIS

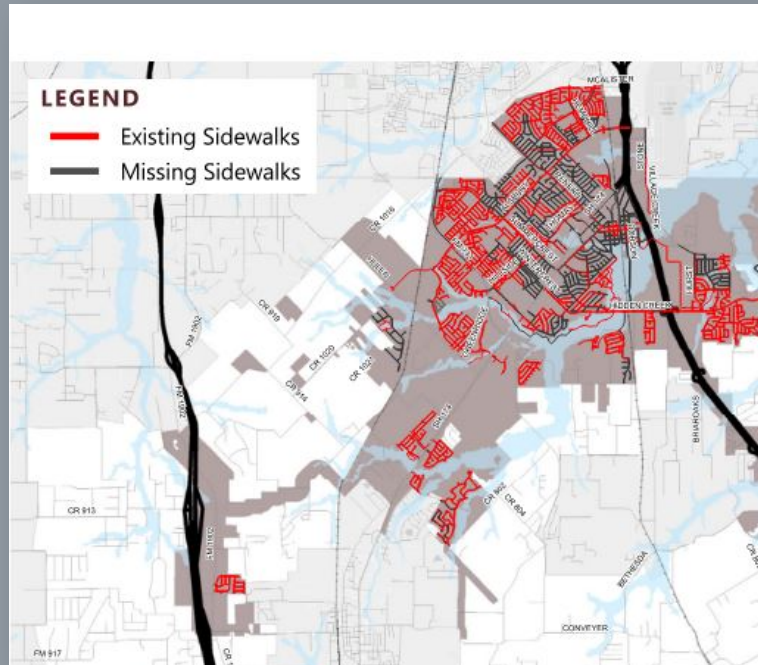
Ensure system will support future growth

Capital Project Cost Estimates

Development of CIP program

ELEMENTS OF MOBILITY MASTERPLAN

Item B.

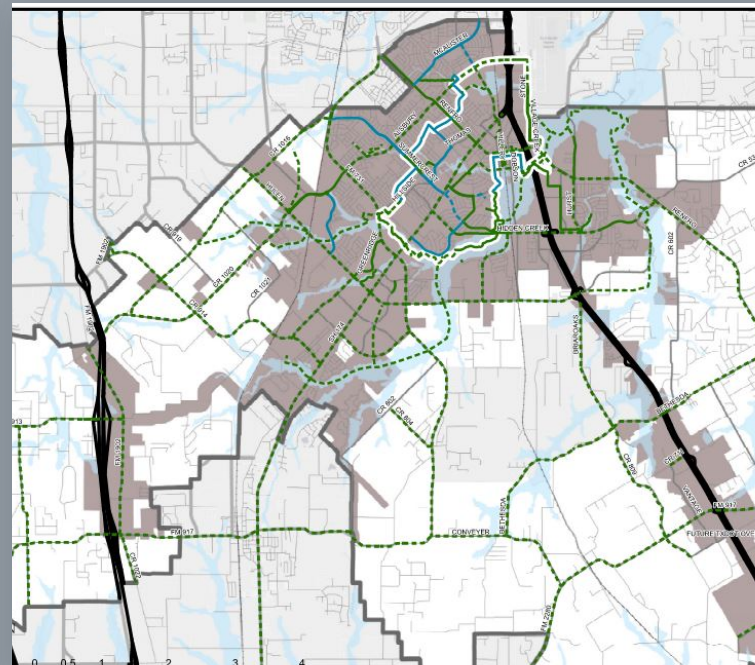


SIDEWALK PLAN

Assess “gaps” in system

Prioritize needs and associated costs

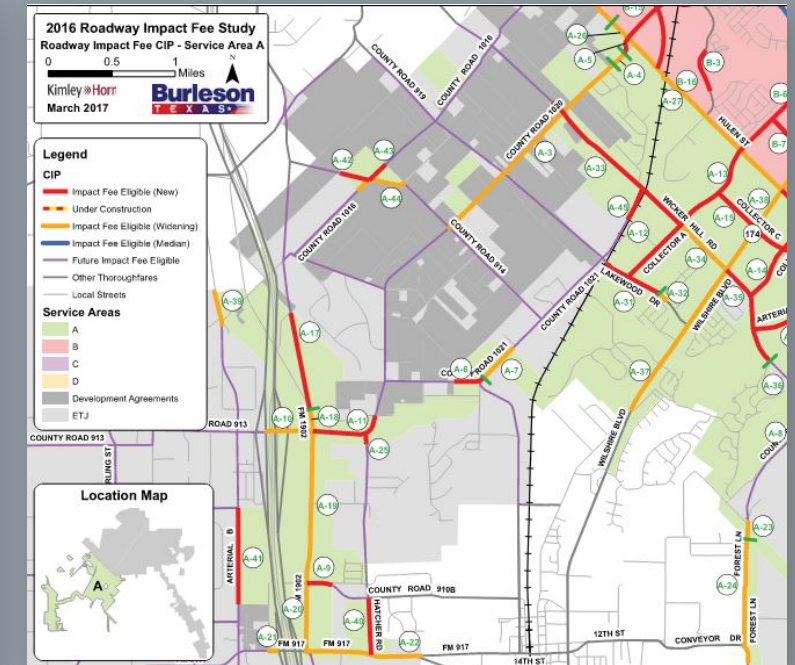
Develop / Implement program for construction



BIKE/TRAIL PLAN

Asses and priorities needs and associated costs

Develop / Implement program for construction



IMPACT FEE ANALYSIS

Street Capital Program Cost

Update Impact Fees - Adjust fees based on expected growth and associated costs

MOBILITY PLAN

Item B.

THOROUGHFARE PLAN

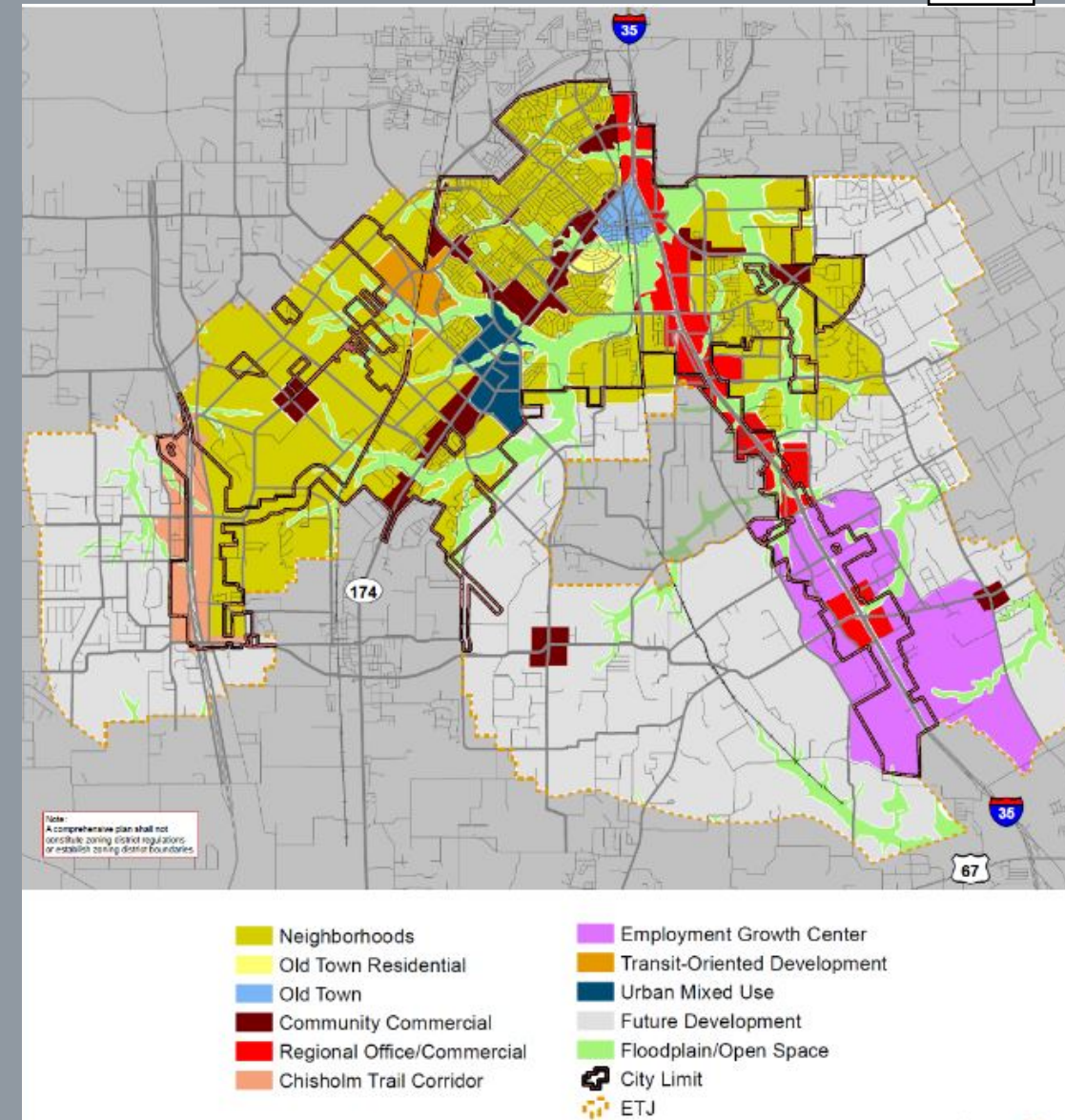
- Establishes Capital Improvements Plan
- Land use assumptions aids in development of Capital Improvements Plan and shall be reviewed and updated
- Capital Improvements Plan shall be updated based on land use plan every 5 years

SIDEWALK / BICYCLE / TRAIL PLAN

- No regulatory time for review and updating
- If part of overall mobility plan, typically revisited every 5 years with Capital Improvements Plan and adjusted if warranted

ROADWAY IMPACT FEE STUDY

- Requires updating every 5 years or when annexing of land within the Extraterritorial Jurisdiction
- Based on Capital Improvements Plan over a period of 10 years of projected new growth



OVERALL METHODOLOGY

The mobility masterplan utilizes the Comprehensive Plan, previous mobility masterplans, population data, growth data, construction documents, etc as a basis for the plan update

2015 - LAST UPDATE TO THE MASTERPLAN

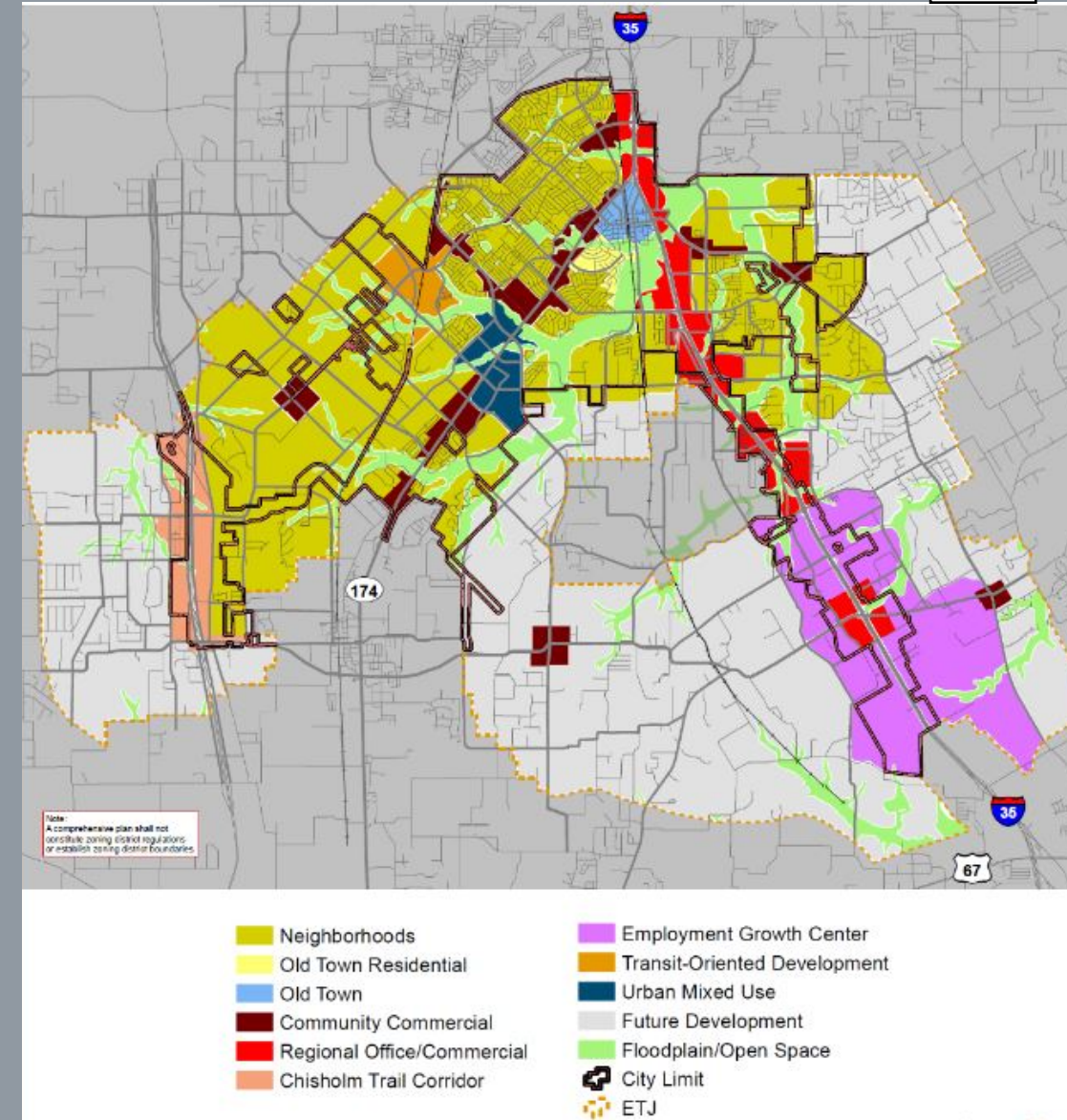
POPULATION DATA

- Land use assigned at parcel level - more accurate data
- Population within 10% of census

GROWTH DATA

- Existing planned developments considered
- Future land use information utilized
- NTCOG population projections utilized for surrounding areas

Item B.



PUBLIC OUTREACH

PUBLIC OUTREACH

MOBILITY SURVEY AND INTERACTIVE MAP

- January 2021 - March 2021
- Promoted on City's Facebook page and city website
- Signs with Q-codes placed at all city buildings, parks, Old Town etc. Q-code directed to survey.
- 280 responses with 116 total comments

SUMMARY OF ENGAGEMENT

Item B.

Mobility Plan Survey

- 280 Responses
- 17 Questions

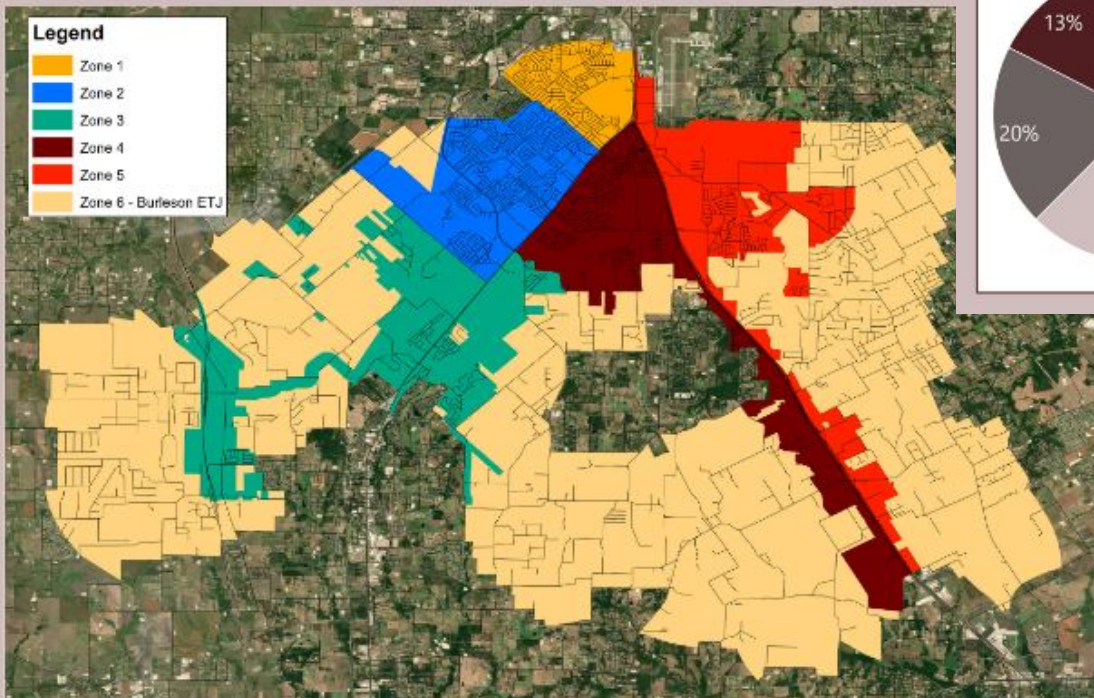


Interactive Map



PUBLIC OUTREACH

Item B.



ZONE 1	ZONE 2	ZONE 3	ZONE 4	ZONE 5	ZONE 6
14%	26%	17%	12%	13%	11%

I ONLY WORK IN
THE PROJECT AREA

2%

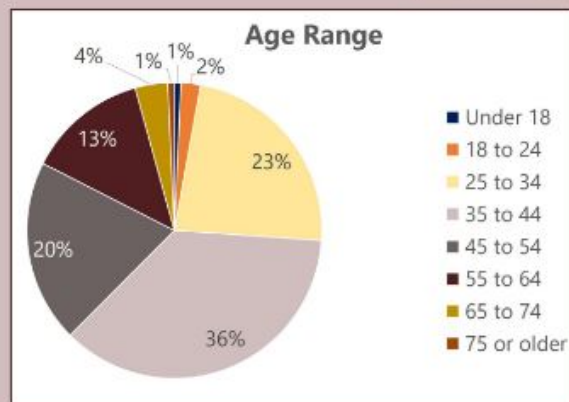
I DO NOT LIVE OR WORK IN THE
PROJECT AREA, BUT I DO OWN
PROPERTY WITHIN IT

1%

NONE OF THE
ABOVE

4%

SURVEY SNAPSHOT



70%



WORKS FULL TIME

91%



IDENTIFIES AS
A CONCERNED
CITIZEN IN PUBLIC
DECISION-MAKING

SURVEY SNAPSHOT (CONT.)

79%
TRAVEL TO WORK

RESPONDENT SATISFACTION WITH WORK COMMUTE:

21% : VERY SATISFIED
24% : SOMEWHAT SATISFIED
24% : NEITHER SATISFIED NOR DISSATISFIED
22% : SOMEWHAT DISSATISFIED
09% : VERY DISSATISFIED

93%



USE PERSONAL VEHICLES
EVERYDAY

58%



NEVER USES A BICYCLE

85%

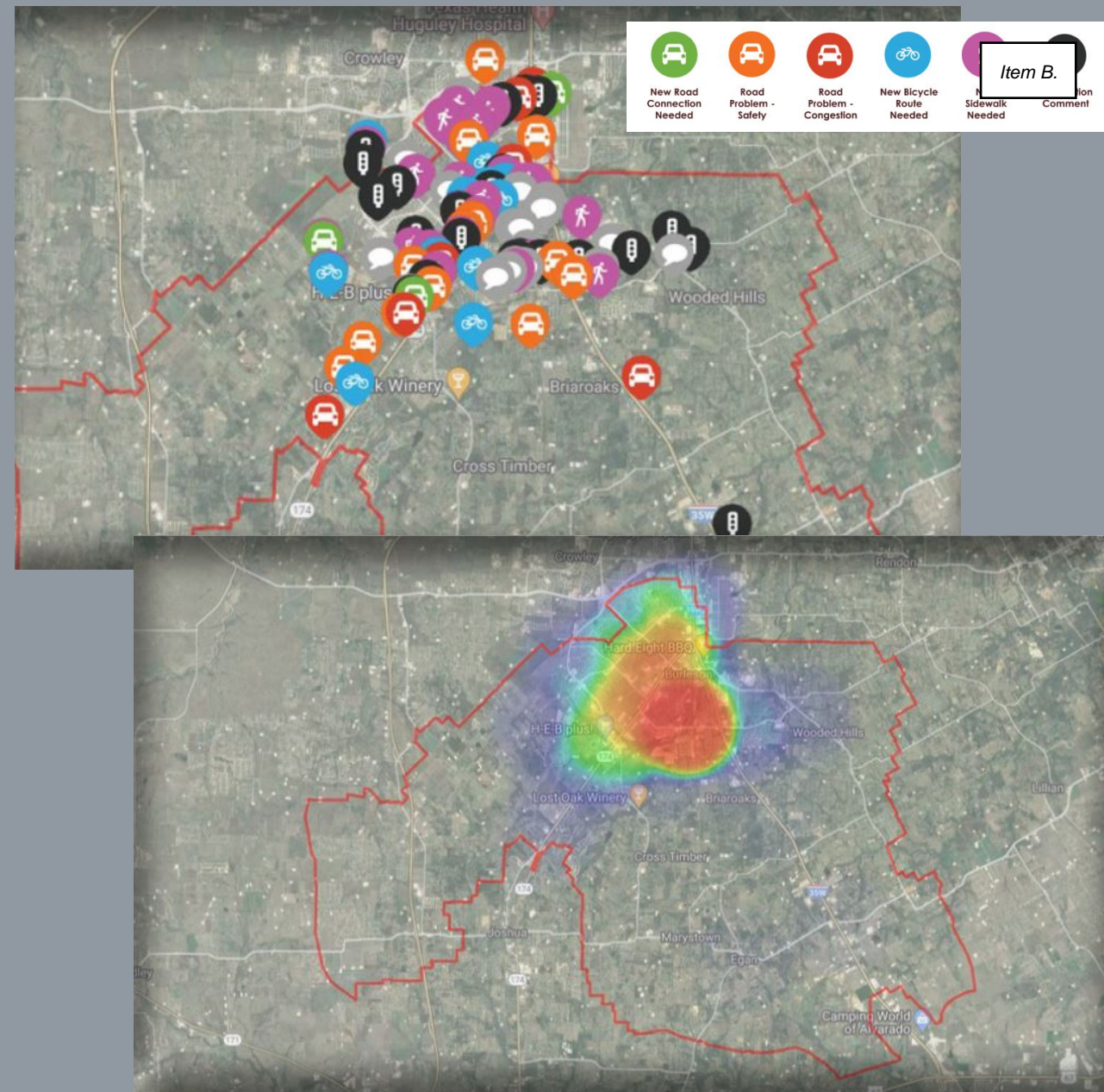


USE SIDEWALKS AND
TRAILS FOR RECREATION
OR EXERCISE

PUBLIC OUTREACH

SUMMARY OF COMMENTS

- 8 Congestion comments - majority occurred at intersections with known congestion issues
- Request for SW Wilshire Blvd to be expanded - design currently underway
- New bicycle routes requested - many suggestions consisted of connections to schools, restaurants, grocery stores etc.
- New sidewalks requested - similar comments as bicycle comments
- Intersection comments focused mainly along SW Wilshire Blvd.
- Additional comments provided feedback on additional parking lots for trail access, flooding issues, park preservation, more lighting along trails



THOROUGHFARE PLAN

METHODOLOGY - MTP

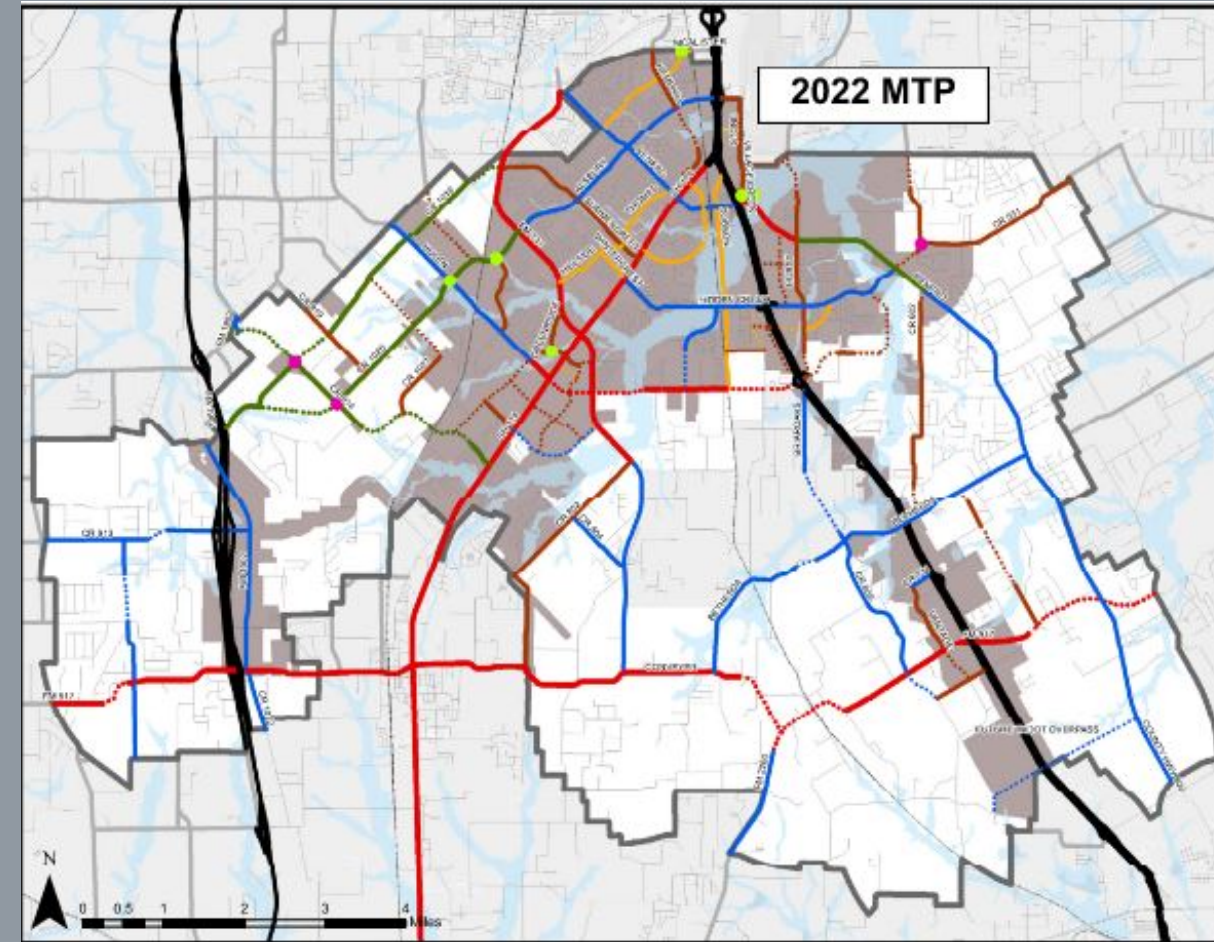
Item B.

EVALUATED EXISTING 2015 MTP RECOMMENDATIONS

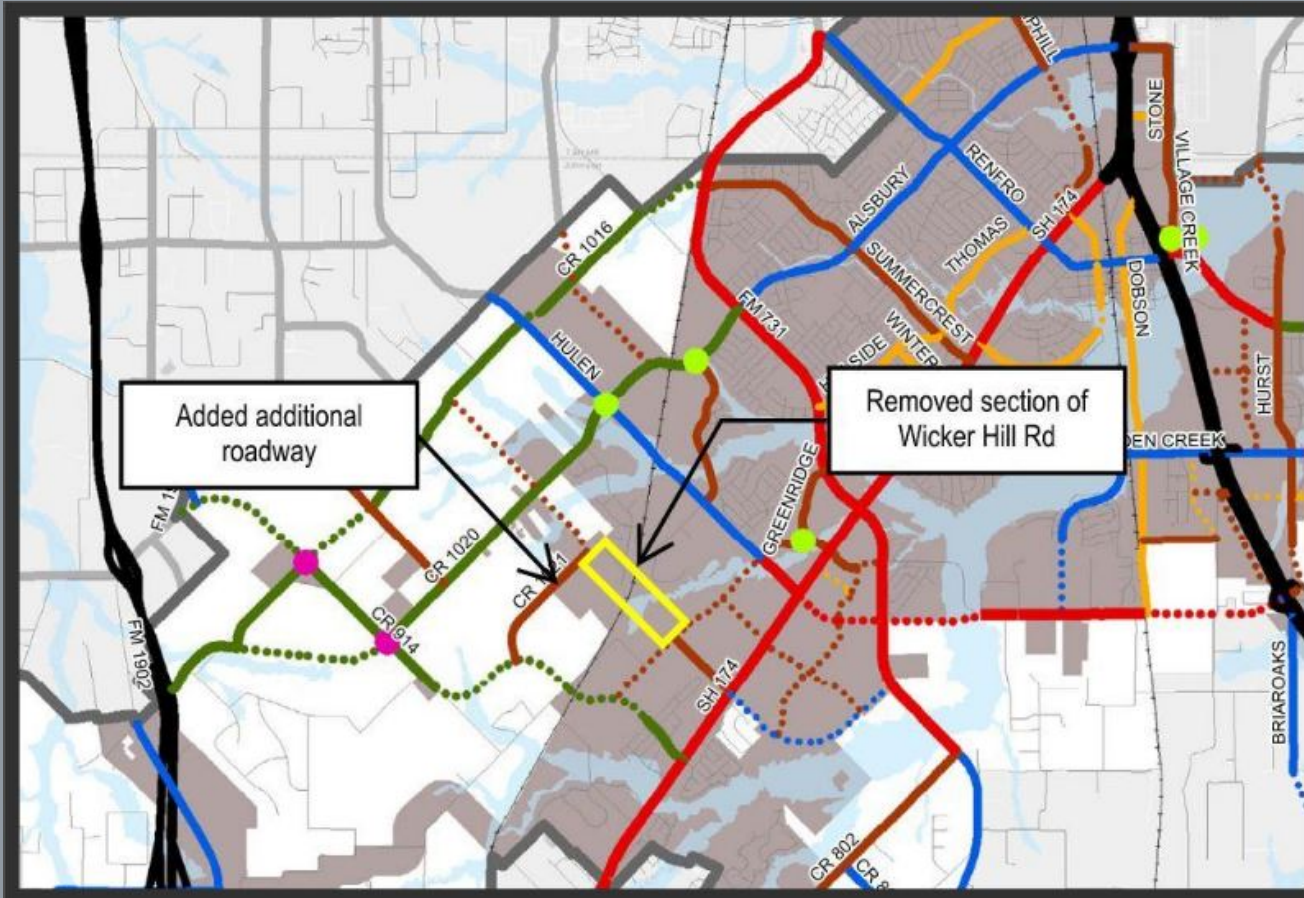
- Annexation laws prevent involuntary annexation
- Determined what roadways were critical to Burleson's mobility and connectivity
- Removed roadways in ETJ and City not critical to the overall network

EVALUATED CURRENT CLASSIFICATIONS VERSUS PROJECTED FUTURE VOLUMES

- Classifications and volumes were inconsistent - required more ROW and design requirements for roadways where classifications didn't support future volumes



MTP CHANGES

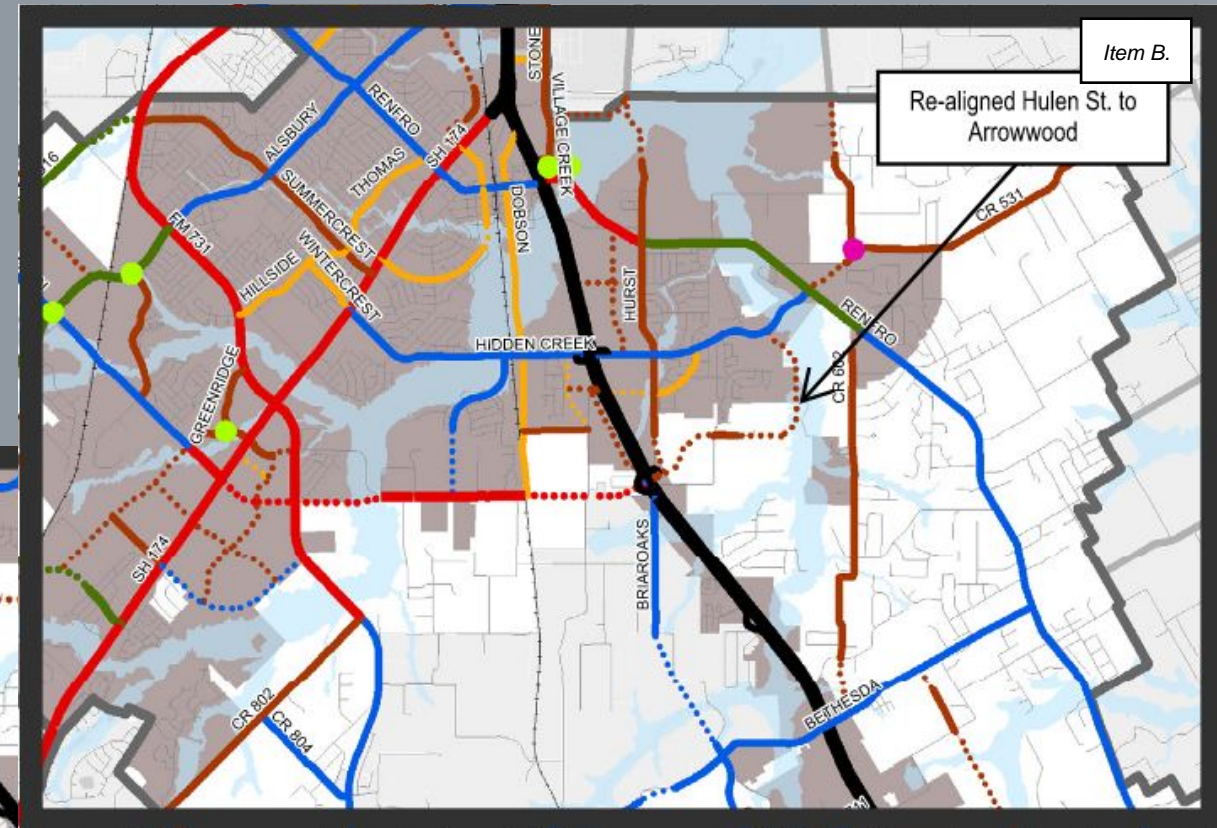
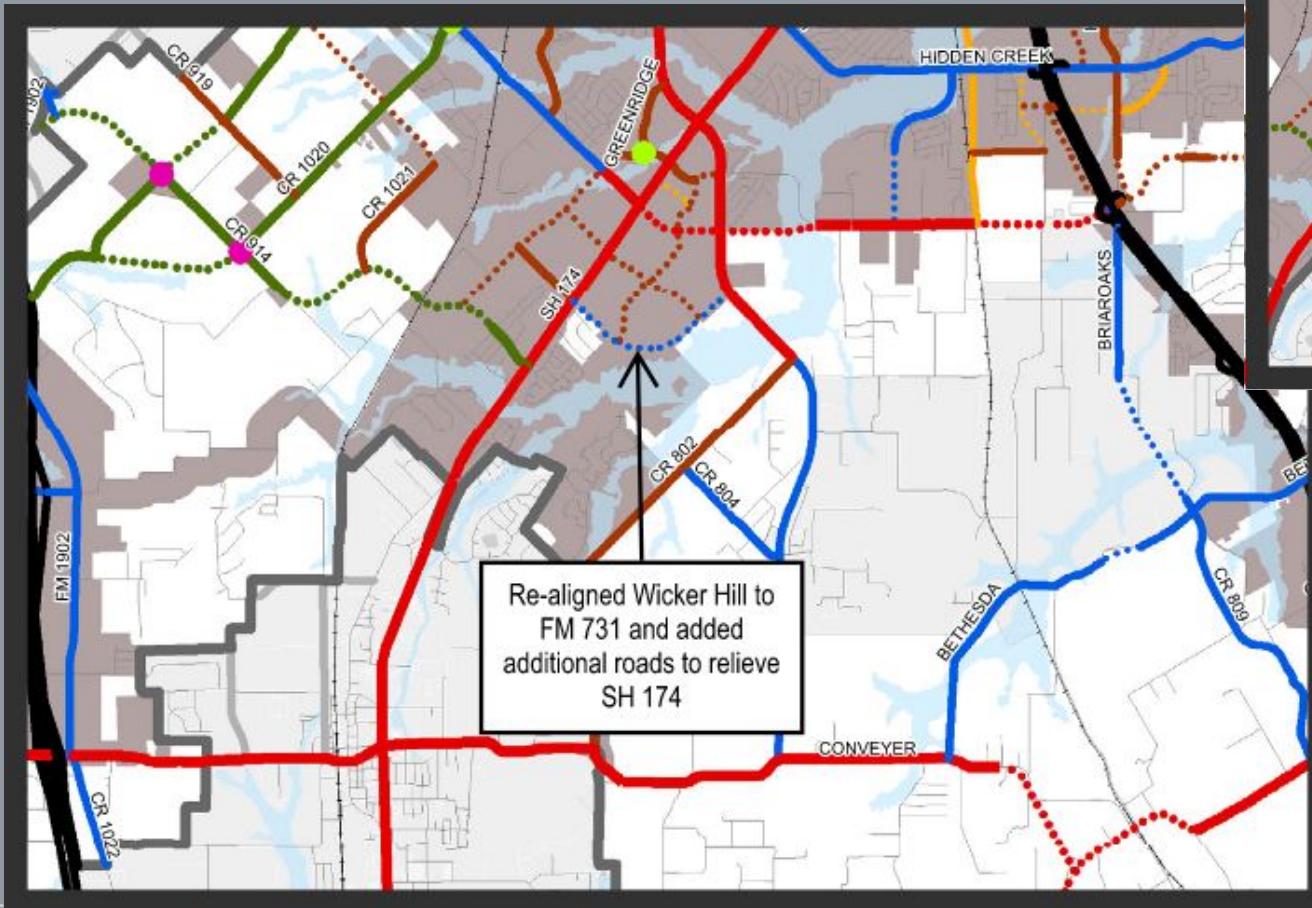


Eliminates potential railroad crossing that most likely will not be approved by BNSF

Additional roadway critical to keep other roadways at 4 lanes - without, Lakewood Blvd and Alsbury Blvd must ultimately be 6 lanes

MTP CHANGES

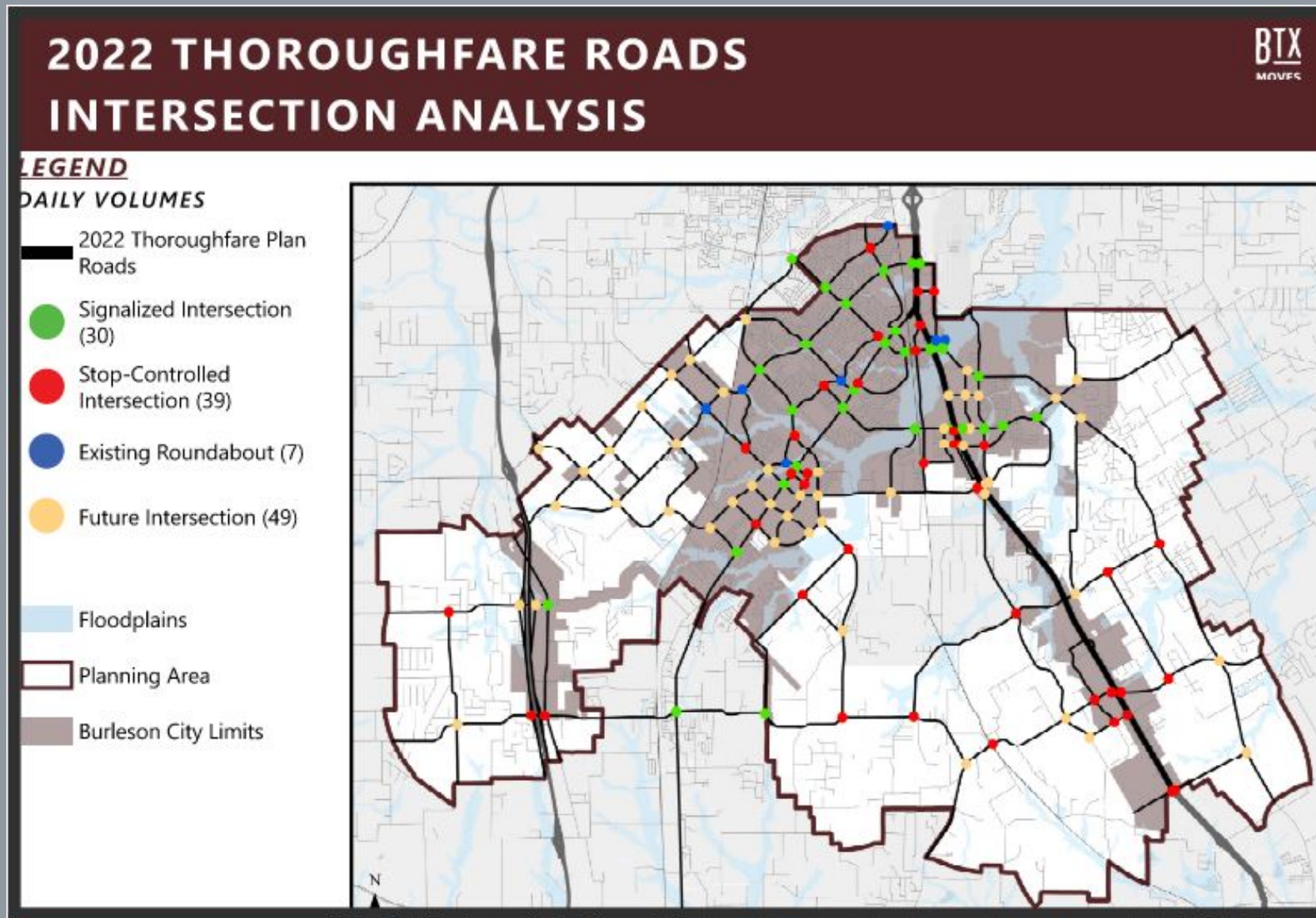
Eliminates need for bridge over wide floodplain



Volumes decrease significantly east of IH 35. Hulen St re-aligned to Arrowwood. Eliminates need for property acquisition and bridge over wide floodplain.

MTP CHANGES

Item B.



Added intersection analysis for future traffic signal locations to be included in the roadway impact fee study and eligible for funding through impact fees

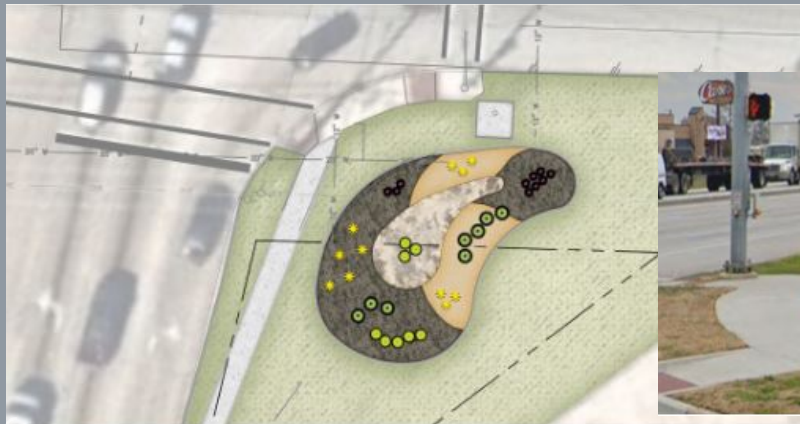
Currently, traffic signals are not included in the impact fee study and not eligible for funding

MTP CHANGES

Item B.



MEDIANS



LANDSCAPING

- Included a landscape palette for the guidance of potential landscaping and hardscape along thoroughfare roadways
- Mobility plan includes examples of median, parkway, and corner landscaping improvements
- Features native plants, including ornamental and canopy trees
- Provides an aesthetically pleasing buffer for two-way traffic
- Planned developments have flexibility to create their own theme through the development

CORNERS

SIDEWALK PLAN

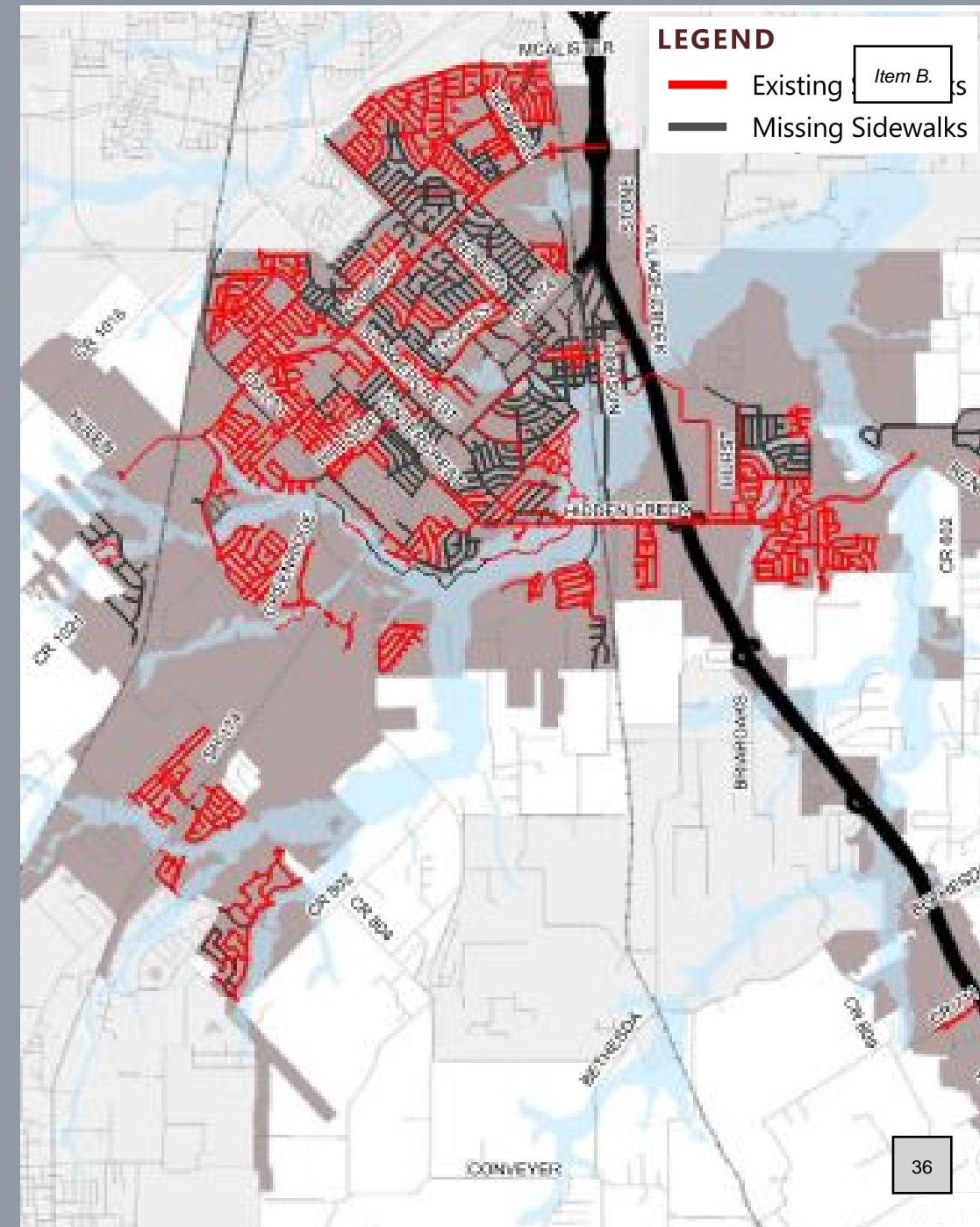
SIDEWALKS

EXISTING NETWORK

- Over 200 miles of existing sidewalks
- Older subdivisions/commercial development - past ordinances did not require sidewalks
- New subdivisions/commercial development - sidewalks required as part of construction

MOBILITY PLAN UPDATE

- Included sidewalk analysis to develop program and criteria to include in CIP program for funding
- Construction of sidewalks within existing neighbors can be costly - reconstruction of driveways, utility conflicts, ROW needs etc.
- Criteria will also allow for prioritization and phasing of needs
- Initial phases can construct sidewalks that can act as “spines” to connect neighborhoods with schools, facilities, shopping centers, etc. Additional phases can fill in gaps to create a complete network over time



SIDEWALKS

Screening Criteria for sidewalk improvements

NEIGHBORHOOD SIDEWALKS

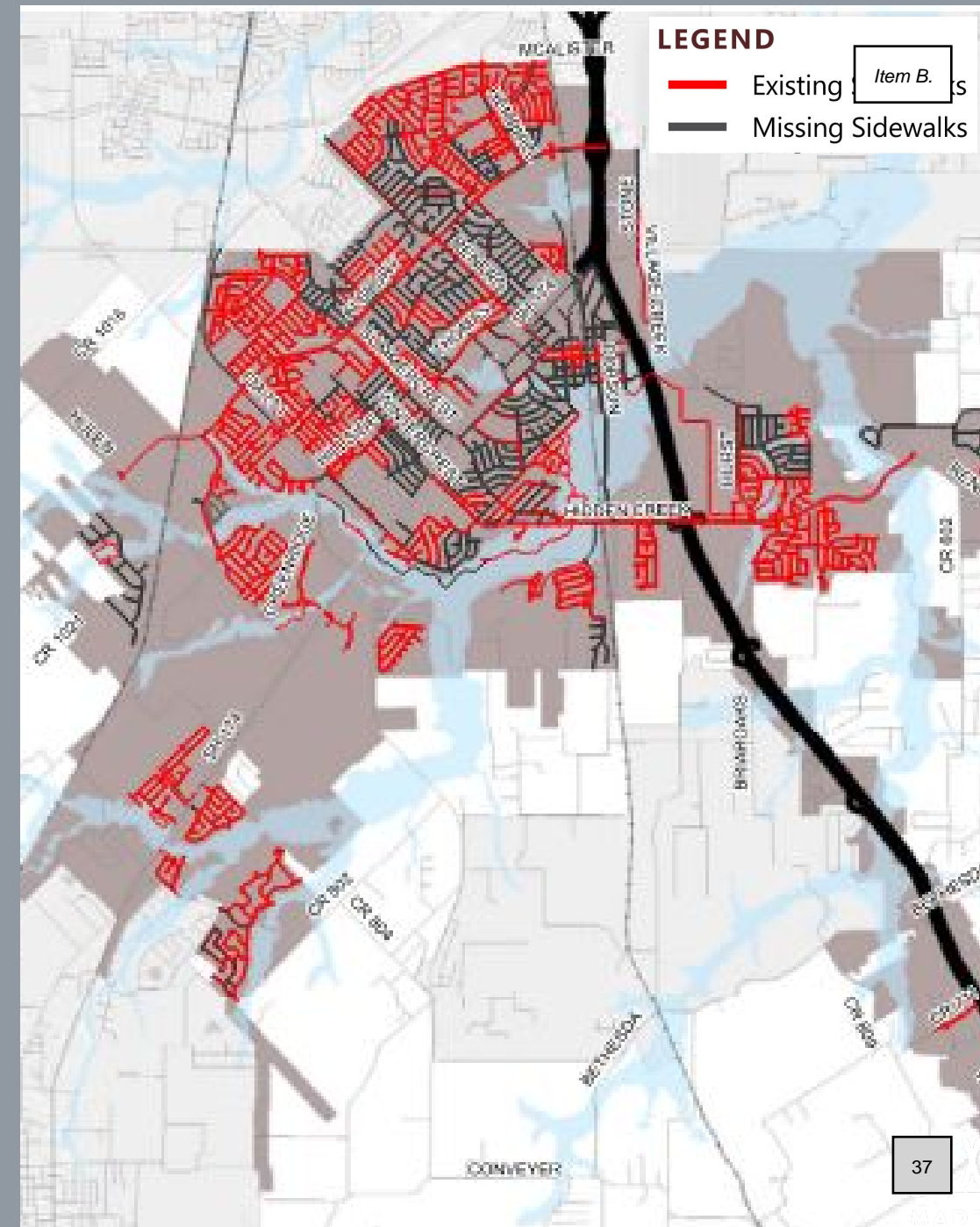
- Neighborhoods without sidewalks - top priority

MAJOR CONNECTIONS TO DESTINATIONS

- Schools - coordination with school districts to determine where kids are walking from will need to occur
- Community Facilities - BRiCk, existing parks, trails, activity centers
- Old Town
- Employment Centers - commercial corridors considered important to connect to adjacent neighborhoods
- Shopping/Activity destinations

PEDESTRIAN SAFETY

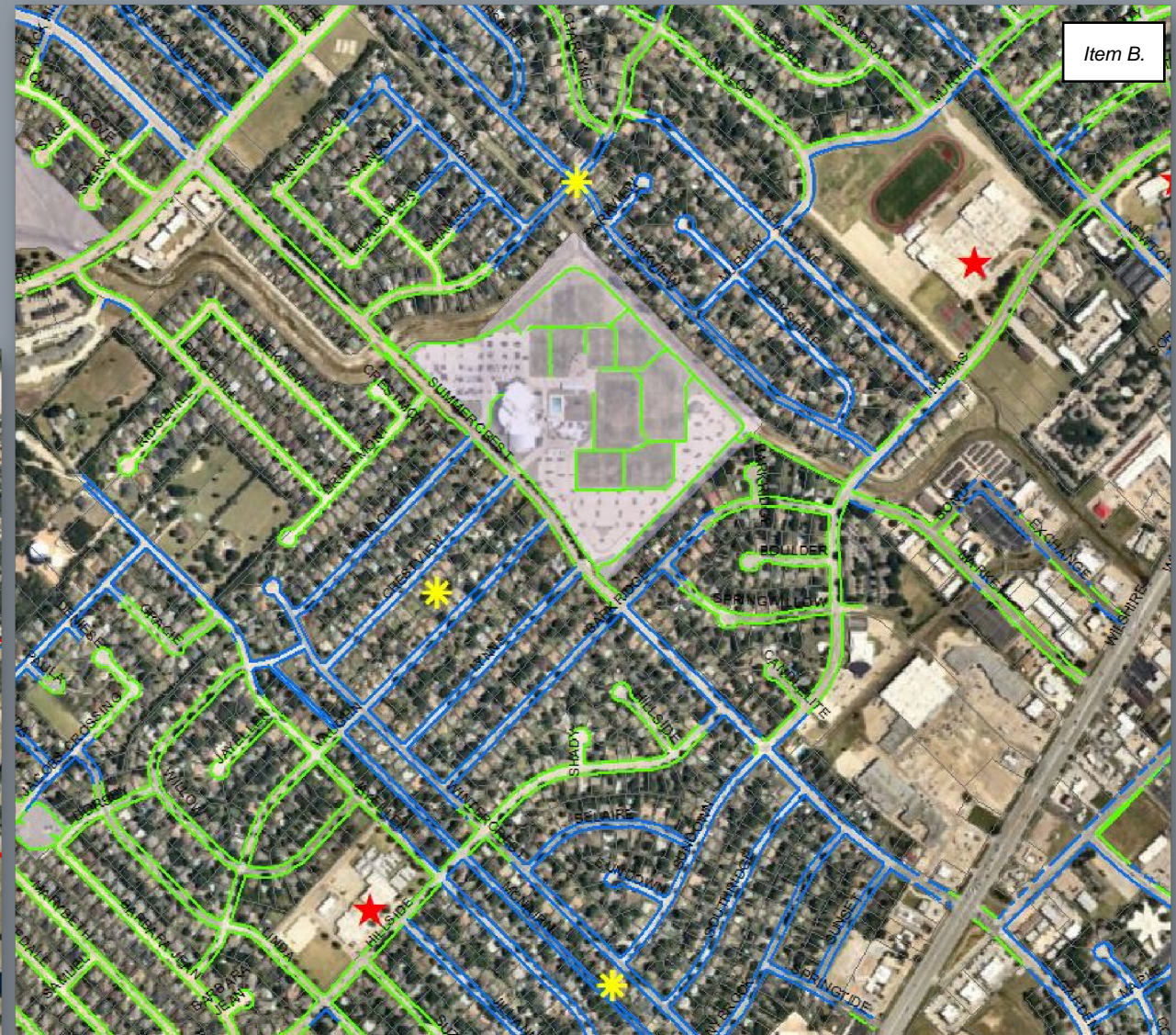
- High pedestrian use areas where sidewalk connectivity did not exist



SIDEWALKS

Potential Future CIP Projects

Oak Valley - connection to park, Centennial HS, and Bransom Elementary



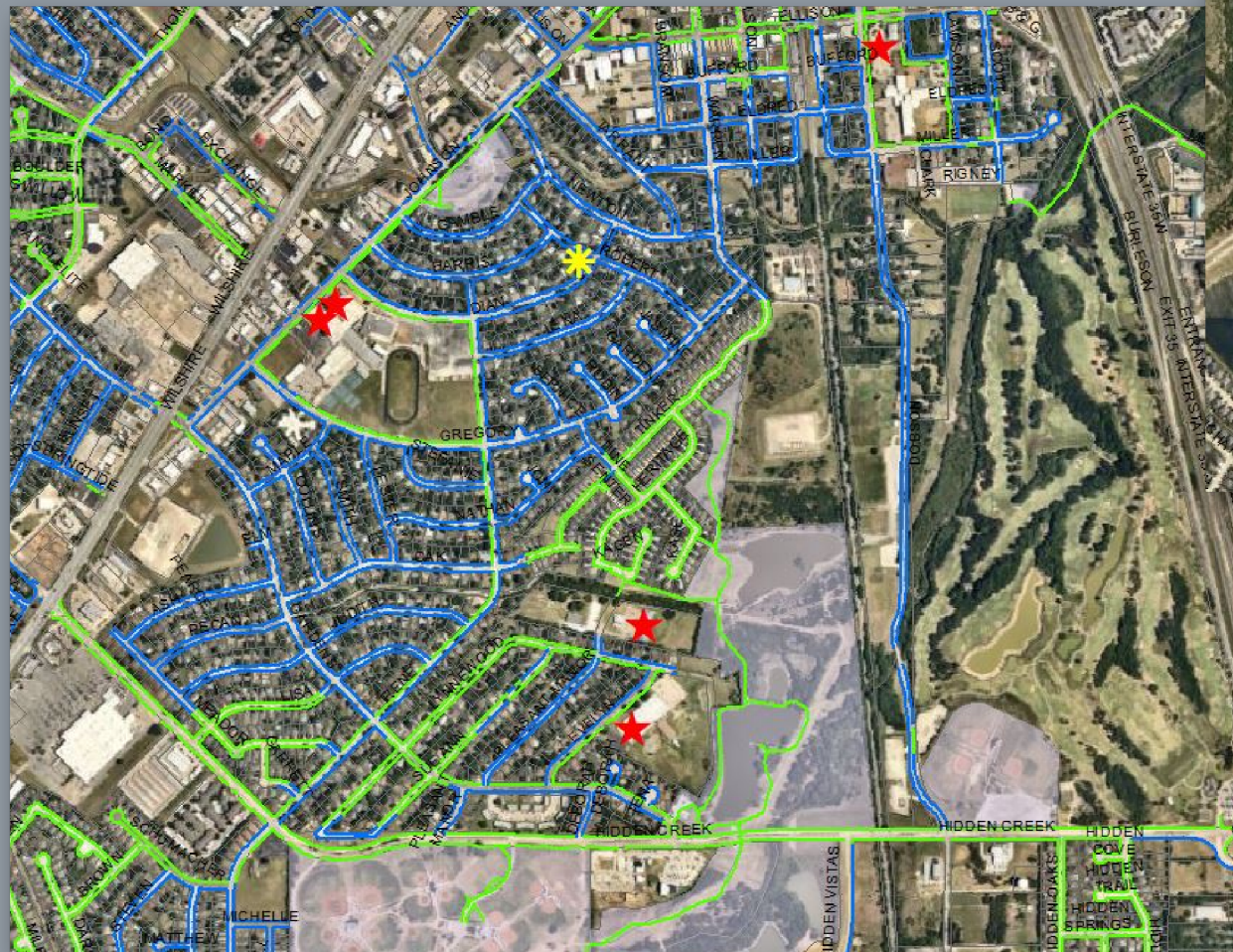
Item B.

Nearby neighborhoods around the BRiCK -
Opportunities to connect neighborhoods
with schools and the BRiCK

SIDEWALKS

Potential Future CIP Projects

Old Town area - connection to Old Town,
Bailey Lake and existing schools



Item B.

Renfro / McAlister area - connection to
existing trails and schools

SIDEWALKS

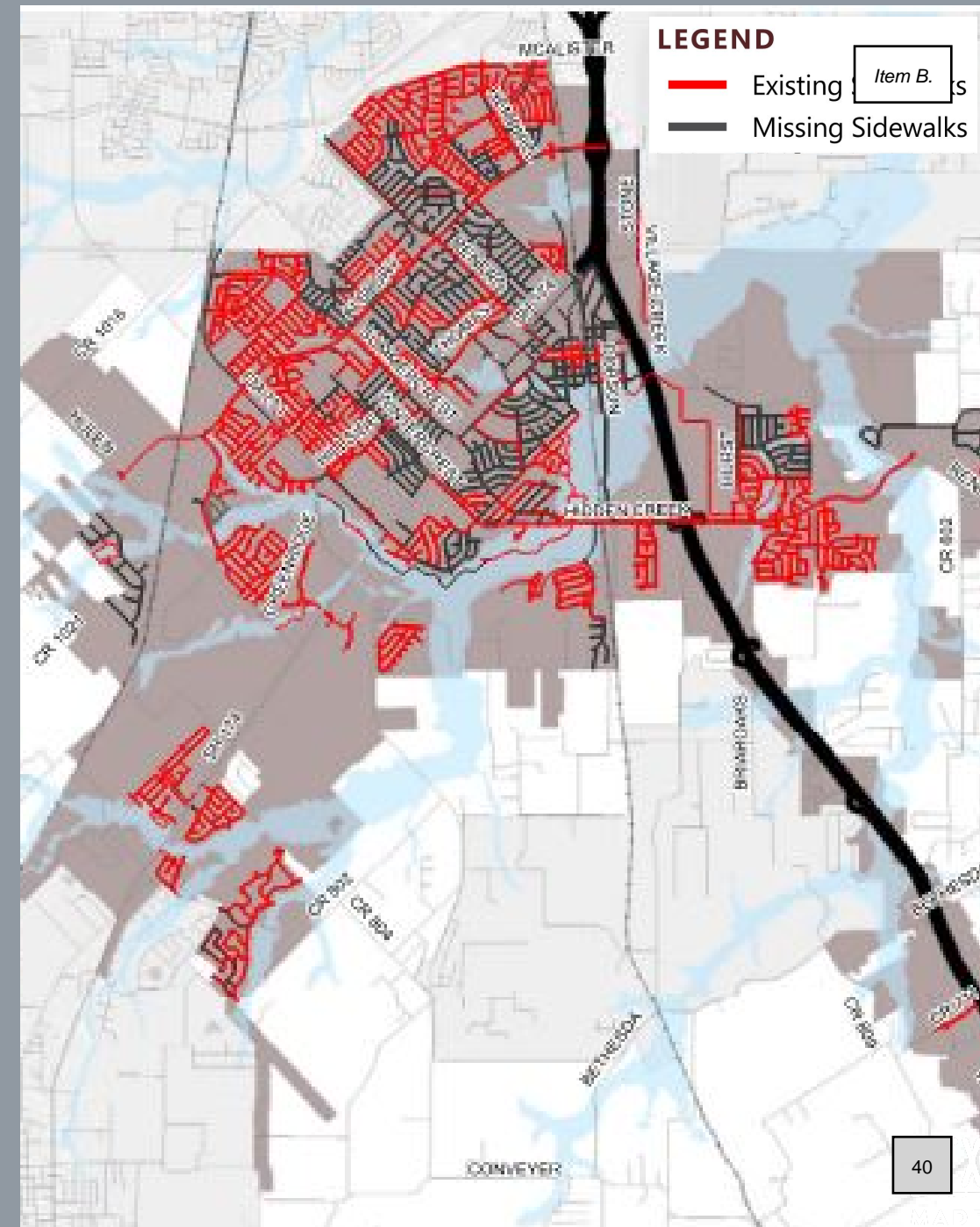
Policy Recommendations

ADA COMPLIANCE

- Evaluate existing network for compliance
- Review and update current ordinances and details to ensure compliance (update to design manual approved July 18, 2022 - ADA requirements will be included)
- Require proper signage and markings to clearly delineate pedestrian paths

NEIGHBORHOOD CONNECTIVITY

- Funding should be allocated each year in the CIP program to provide sidewalks where there are gaps in network to improve the overall system
- New developments required to construct sidewalks and trails as shown on updated 2022 plan
- Continue to identify and complete the sidewalk network in residential neighborhoods as a priority to connect to key destinations including schools, parks, trails, and other activity centers



SIDEWALKS

Policy Recommendations

PEDESTRIAN SAFETY

- All future pedestrian improvements projects are marked with visible crosswalks
- High pedestrian volume areas should include pedestrian rapid flashing beacons or additional signage for vehicle traffic

REDEVELOPMENT AND RETROFITS

- Redevelopment by City or property owners within in key activity areas, such as Old Town, should retrofit non-confirming or non-ADA compliant city maintained sidewalks
- The Old Town sidewalk and streetscape pattern should continue to be implemented throughout Old Town as redevelopment or development occurs

COORDINATION WITH BICYCLE AND TRAILS PLAN

- All pedestrian improvement projects should be coordinated with the Bicycle and Trails Plan



BICYCLE AND TRAIL PLAN

BICYCLE AND TRAIL PLAN

EXISTING NETWORK

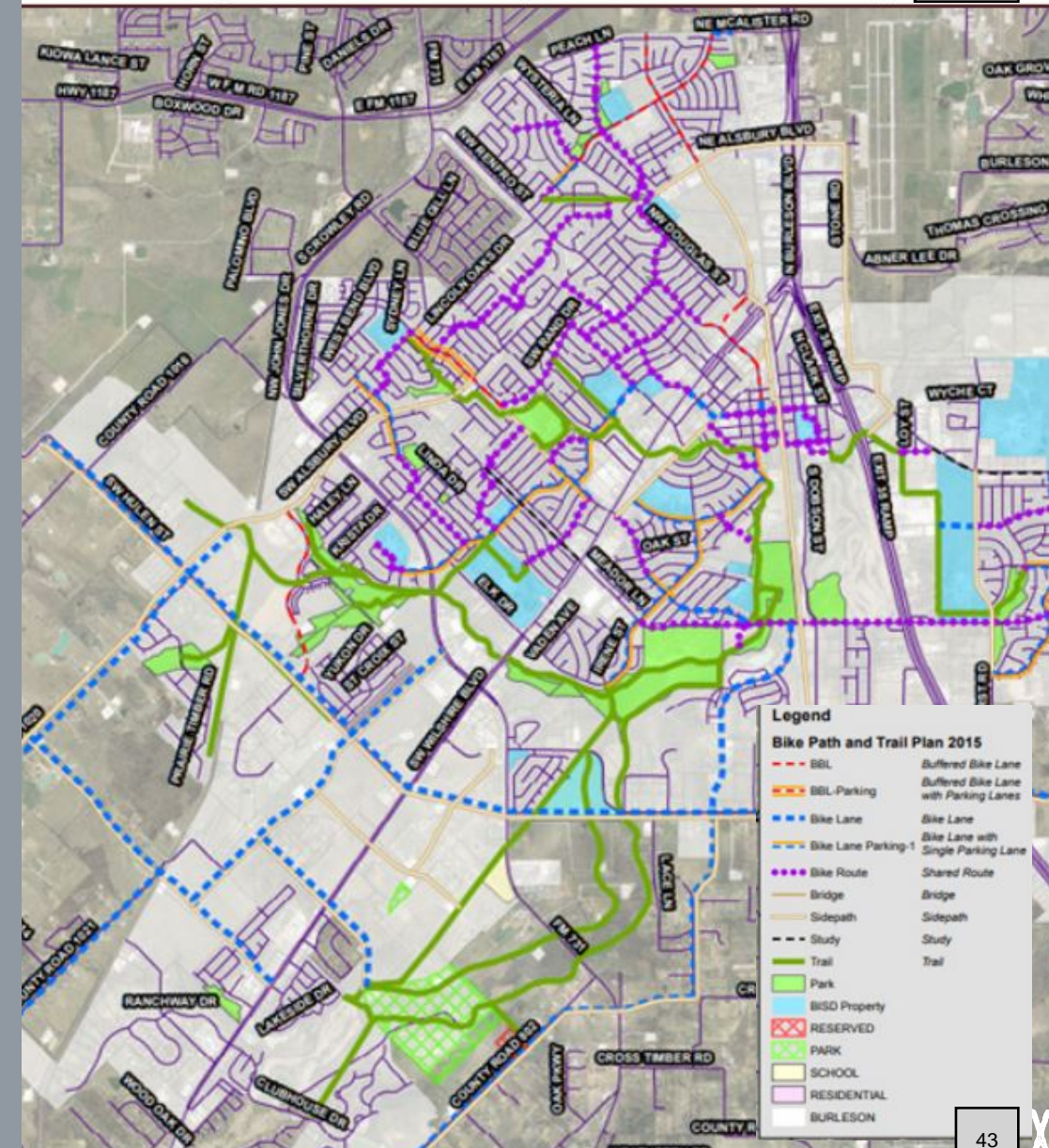
- 11.57 miles of existing on-street dedicated bicycle lanes
- 17.54 miles of existing shared use paths (includes both on-street and off-street network)

MOBILITY PLAN UPDATE

- Simplify previous bicycle plan nomenclature - use "on-street" or "shared use path"
- Focus on providing separation of bicycles and vehicular traffic by allowing for shared use paths along thoroughfare plan that are within the parkway - include shared use paths within the City's arterial cross sections
- Include 10-mile loop within mobility plan - identify potential connections to trails and sidewalk network
- Include areas within the development agreements
- Expand trail plan
- Provide policy recommendations

Figure 16. 2014 Bicycle Master Plan Map

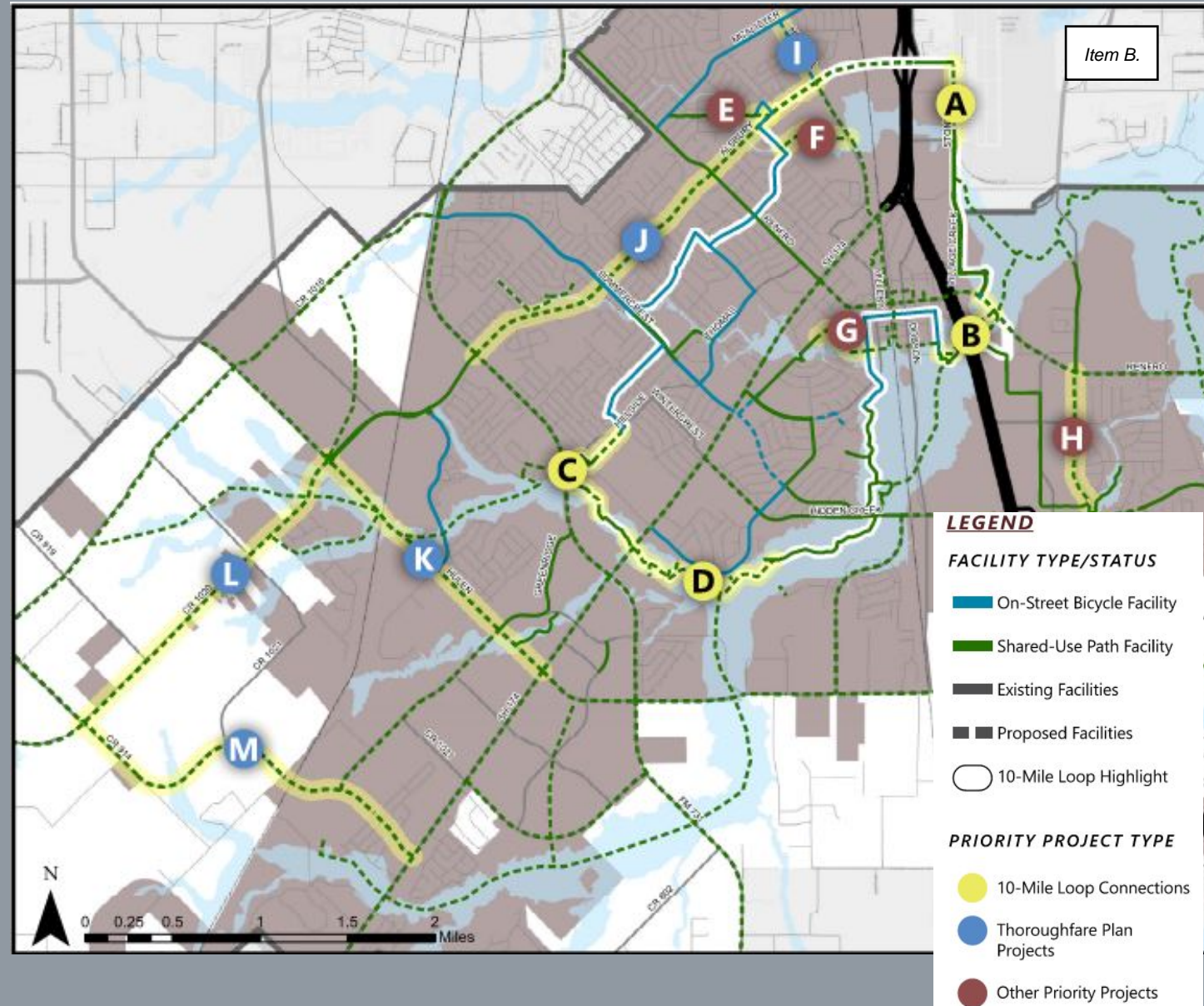
Item B.



BICYCLE AND TRAIL PLAN

PROPOSED NETWORK

- 1.34 additional miles of on-street paths (focusing on separation of vehicles and bicycles)
- 121.57 additional miles of shared use paths
- Utilize floodplain and existing utility easements for off-street trails proposed as part of the 121.57 miles
- Connection to existing trails within Bailey Lake and Village Creek currently under design
- 4 connections to the existing 10-mile loop plan



The Parks Dept. has reviewed the plan and provided comments. Continued coordination with the Parks Department is critical for the trail system

BICYCLE AND TRAIL PLAN

Policy Recommendations

NEIGHBORHOOD WAYFINDING

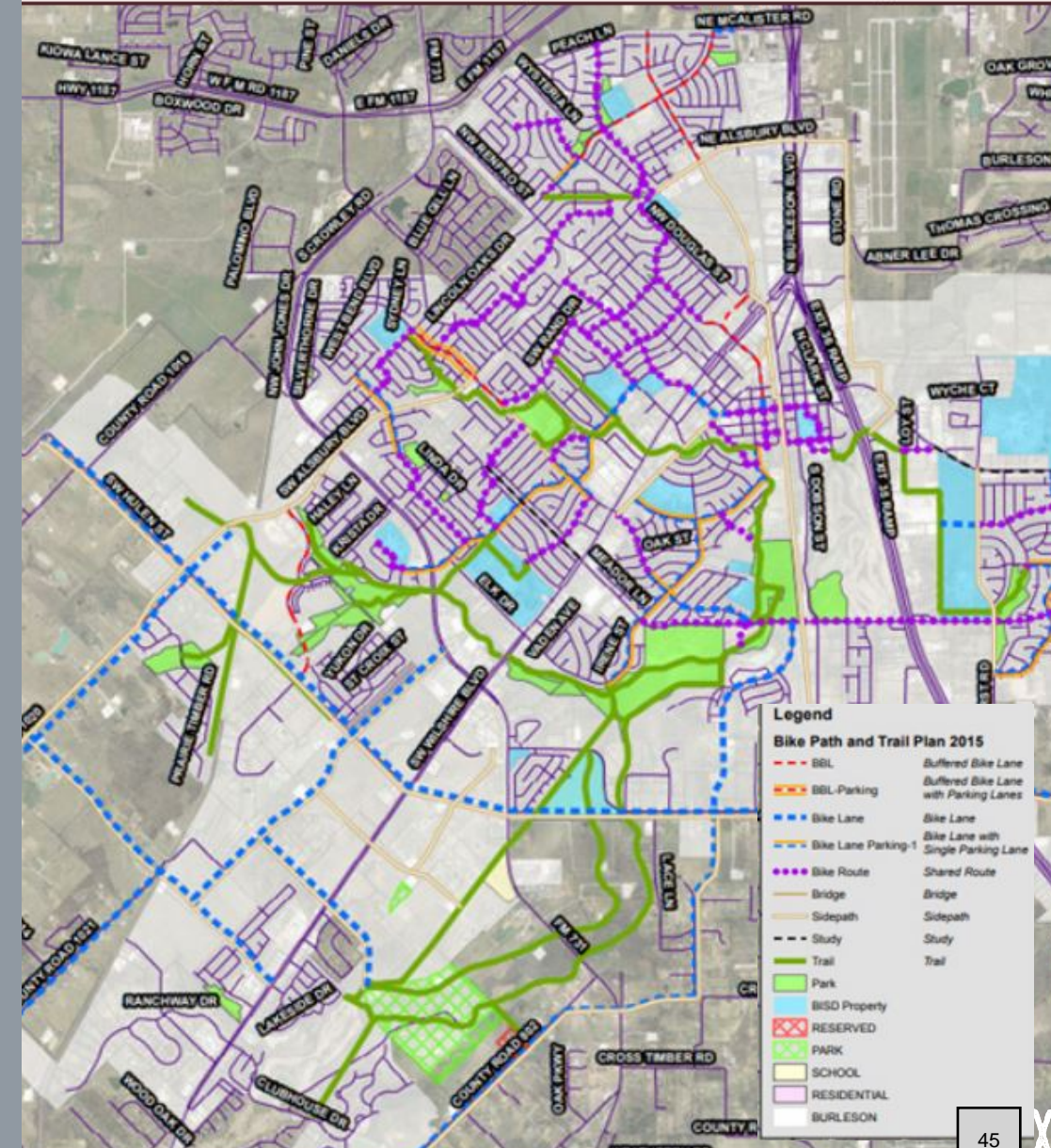
- Provide wayfinding signs at strategic locations to direct users especially at the neighborhood level - will direct users from local roads to the nearest on-street facility or shared path
- For larger planned developments, consider wayfinding at the planning stage where appropriate

UPDATE DESIGN STANDARDS

- Add minimum design standards for shared paths and on-street facilities (widths, sections, etc)
- Provide options to separate vehicles from bicyclist to provide flexibility and determine the most appropriate type from project to project

Figure 16. 2014 Bicycle Master Plan Map

Item B.



NEXT STEPS

IMPACT FEE STUDY UPDATE

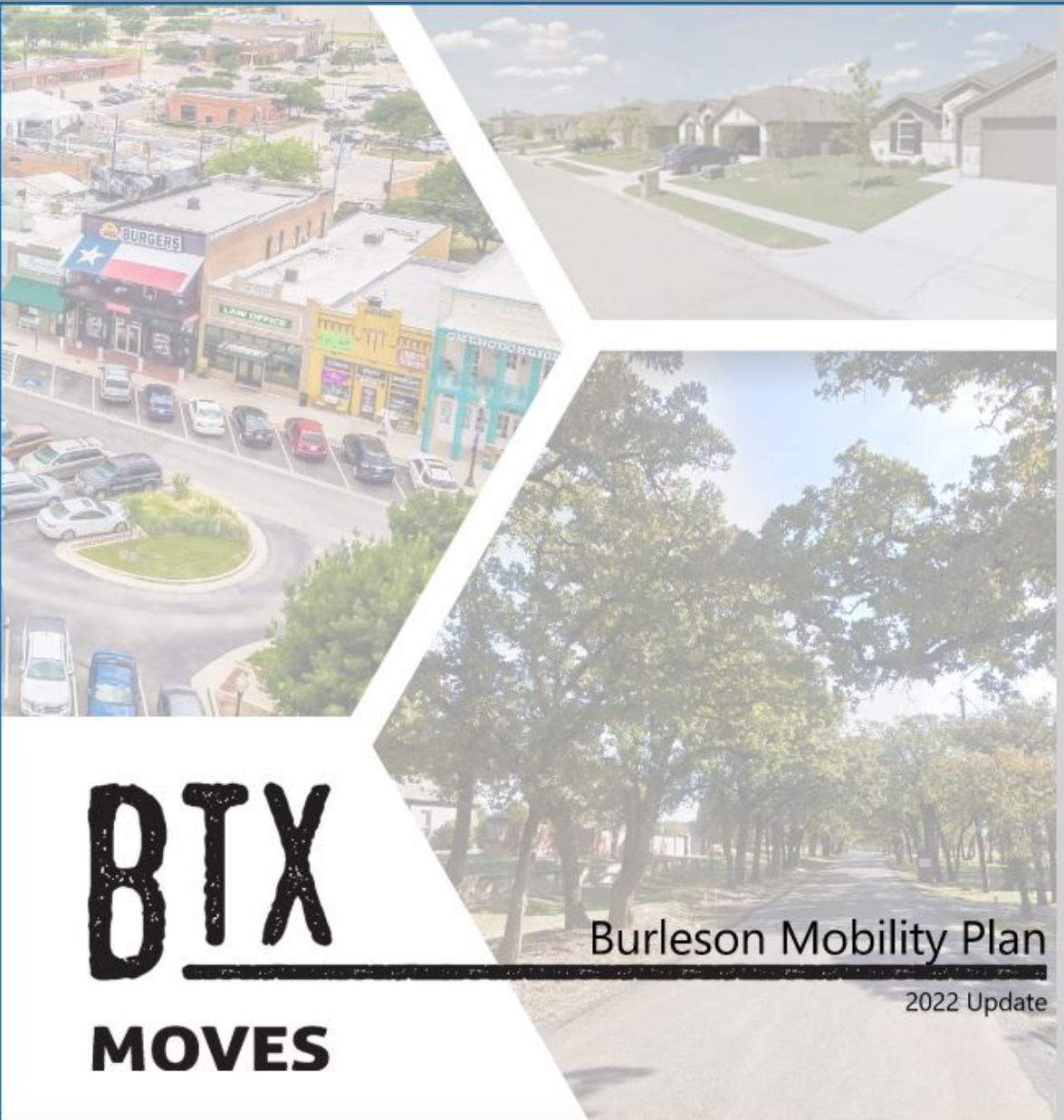
- Required update every 5 years - currently underway
- A charge or assessment on new development in order to generate revenue for funding or recouping a portion of the costs of capital improvements
- One time charge assessed to new development and redevelopment

IMPACT FEE COMMITTEE MEETING

- Re-establish the Capital Improvement Program Advisory Committee (CIPAC). A separate report will be presented on August 15th for council direction.
- Review and recommendation of any fee increases to City Council

FINALIZE RECOMMENDATIONS

ADOPTION OF MASTER PLAN AND IMPACT FEE STRUCTURE BY CITY COUNCIL BY END OF 2022



QUESTIONS?



Item B.

City Council Regular Meeting

DEPARTMENT: Economic Development

FROM: Alex Philips, Economic Development Director

MEETING: August 1, 2022

SUBJECT:

Receive a report, hold a discussion and give staff direction regarding the Burleson Works program. (*Staff Presenter: Matt Ribitzki, Deputy City Attorney*)

SUMMARY:

The mission of the Burleson Works program is to provide an avenue for companies and citizens in our region to connect with one another to fill the skills gap in our labor market through partnerships with local and regional schools to obtain skills and certifications to gain employment in our community. In the last four year, the mission has been achieved by awarding scholarships to obtain needed skills to industry selected recipients with a path to employment at a Burleson based business. To date, Burleson Works has awarded 10 scholarships with four employees still working with the same Burleson business. The last two years have been impacted by the COVID-19 pandemic.

Presently, the program operates on an annual timeline, surveying industry partners in October and awarding scholarships each May. How the program operates was devised by a group of local industry partners, representatives from Burleson Independent School District and representatives from higher education providers.

With a changing landscape in employment needs, the program requires modification to continue to meet the needs of local industry partners. The proposed changes would allow the program to become more flexible and also help support existing employees as well as new employees.

New Employees

- We will continue to work with our partners to promote the program and current offerings at the companies.
- Companies that find a candidate through their hiring process that is in the need of training can utilize the Burleson Works Program for assistance.
- The assistance is paid to the school of the companies choosing. Scholarships are capped at **\$3,500**

- This will give companies the “On Demand” assistance in getting training sooner rather than waiting on the previous process.

Existing Employees

- Companies that would like to upskill an employee can request to be reimbursed up to **\$1500** prior to the training beginning.
- The assistance is paid to company after receiving the certificate of completed training and confirmation from the company that the additional training has resulted in the employee gaining additional wages or benefits.
- This assistance would be based on a first come, first serve basis. The EDC would utilize half of the Burleson Works budget to assist with this program each year. (\$30,000)

Following the direction provided to staff, a resolution to formalize the changes, if any, will follow.

OPTIONS:

- 1) Proceed as presented
- 2) Proceed with changes
- 3) Make no changes to Burleson Works

RECOMMENDATION:

Approve as presented

PRIOR ACTION/INPUT (Council, Boards, Citizens):

The Manufacturing & Industrial Alliance and The Burleson Opportunity Fund Board have voted to support the changes as presented

FISCAL IMPACT:

N/A

STAFF CONTACT:

Alex Philips
Economic Development Director
aphilips@burlesontx.com
817-426-9613



Burleson Works



“Providing Career Growth through Technical Education”



Mission

To provide an avenue for companies and citizens in our region to connect with one another to **fill the skills gap** in our labor market through **partnerships with local and regional schools** to obtain skills and certifications to gain employment in our community.

Goal

To provide an opportunity for students and citizens in the region to gain technical skills that would be beneficial to our community partners.

Current Program



Basics of the Program

- Survey of industry partners each year to determine what jobs are in need.
- Scholarships offered will be for the specific needs of the partners.
- The partners will have the opportunity to interview the applicants prior to awarding scholarships.
- Applicants that are awarded the scholarships will know exactly where they will be employed at after completion of the courses.

Scholarship Timeline

- Open January through February
- Orientation Class in March
- Interviews with the company through April
- Scholarships awarded in May

This process is time consuming when the companies are in need of labor now.

Program at a Glance



- Launched Burleson Works in 2017-2018.
- EDC contributed \$60,000 to BOF in 2018-2019. There was no contribution the last two years due to having a healthy balance.
- Burleson Works has awarded 10 scholarships in 4 years with 4 employees still working for the local company. The last two years have been impacted by the pandemic.
- The pandemic was a reset for the program as we could not get into the schools to showcase the program.
- Current balance is \$104,172 and have expended \$14,328 over the last 4 years.



Changes Proposed



New Employees

- We will continue to work with our partners to promote the program and current offerings at the companies.
- Companies that find a candidate through their hiring process that is in the need of training can utilize the Burleson Works Program for assistance.
- The assistance is paid to the school of the companies choosing. Scholarships are capped at **\$3,500**
- This will give companies the “On Demand” assistance in getting training sooner rather than waiting on the previous process.

Existing Employees

- Companies that would like to upskill an employee can request to be reimbursed up to **\$1500** prior to the training beginning.
- The assistance is paid to company after receiving the certificate of completed training and confirmation from the company that the additional training has resulted in the employee gaining additional wages or benefits.
- This assistance would be based on a first come, first serve basis. The EDC would utilize half of the Burleson Works budget to assist with this program each year. (\$30,000)

These changes will make the program easier to utilize and give companies the ability to gain new employees quicker as well as give them the ability to strengthen the current workforce.

Industry Feedback



Manufacturing & Industrial Alliance

- We met and presented these changes to our Alliance partners in June.
- The partners are a collection of school districts, trade schools and industrial and manufacturing businesses in Burleson.
- They all were in support of the changes to the program as this will allow them to utilize the program more efficiently in getting employees hired and trained.

Burleson Opportunity Fund Board

- The BOF Board was presented these changes and voted unanimously in favor to make the changes to the Burleson Works Program
- The BOF will be returning the \$104,172 balance to the EDC in October.
- The funds would be managed and disbursed by the EDC. The EDC will work with the BOF on marketing campaigns to highlight both programs.

Council Direction



- Approve of the changes to the Burleson Works Program
- Modify the Burleson Works Program
- Keep the Burleson Works Program the same



“Providing Career Growth through Technical Education”