
Wednesday, February 19, 2025
9:00 AM

City Hall - 141 W. Renfro
Burleson, TX 76028

1. **CALL TO ORDER**

2. **CITIZEN APPEARANCES**

Each person in attendance who desires to speak to the Committee on an item NOT posted on the agenda, shall speak during this section. A speaker card must be filled out and turned in to the City Secretary prior to addressing the Committee. Each speaker will be allowed three minutes to speak.

Each person in attendance who desires to speak on an item posted on the agenda shall speak when the item is called forward for consideration.

3. **GENERAL**

A. Consider and take possible action on the minutes from the August 21, 2024 Infrastructure & Development Committee meeting. (Staff Contact: Monica Solko, Deputy City Secretary)

4. **REPORTS AND PRESENTATIONS**

A. Receive a report and provide possible recommendations on an update to the City's Water Service Line Inventory. (Staff Contact: Daryl Uptmore, Deputy Director of Public Works)

B. Receive a report and provide possible recommendations on the status of the street maintenance program. (Staff Contact: Justin Scharnhorst, Deputy Director of Public Works)

5. **REQUESTS FOR FUTURE AGENDA ITEMS AND REPORTS**

A. Receive an update on upcoming committee agenda topics. (Staff Contact: Tommy Ludwig, City Manager)

6. **ADJOURN**

Staff Contact:

Randy Morrison
Capital Engineering
Director of Capital Engineering
rmorrison@burlesontx.com
817.426.9295

CERTIFICATE

I hereby certify that the above agenda was posted on this the **12th of February 2025, by 5:00 p.m.**, on the official bulletin board at the Burleson City Hall, 141 W. Renfro, Burleson, Texas.



Amanda Campos

City Secretary

ACCESSIBILITY STATEMENT

The Burleson City Hall is wheelchair accessible. The entry ramp is located in the front of the building, accessible from Warren St. Accessible parking spaces are also available in the Warren St. parking lot. Sign interpretative services for meetings must be made 48 hours in advance of the meeting. Call the A.D.A. Coordinator at 817-426-9600, or TDD 1-800-735-2989.

Infrastructure & Development Committee

DEPARTMENT: City Secretary's Office
FROM: Monica Solko, Deputy City Secretary
MEETING: February 19, 2025

SUBJECT:

Consider and take possible action on the minutes from the August 21, 2024 Infrastructure & Development committee meeting. (*Staff Contact: Monica Solko, Deputy City Secretary*)

SUMMARY:

The Infrastructure & Development committee duly and legally met on August 21, 2024 for a regular meeting.

OPTIONS:

Committee may approve the minutes as presented or approve with amendments.

RECOMMENDATION:

Approve.

STAFF CONTACT:

Monica Solko, TRMC
Deputy City Secretary
msolko@burlesontx.com
817-426-9682

INFRASTRUCTURE & DEVELOPMENT COUNCIL COMMITTEE
August 21, 2024
DRAFT MINUTES

Council Present:

Dan McClendon, Chair
 Chris Fletcher
 Phil Anderson

Council Absent:Staff:

Tommy Ludwig, City Manager
 Harlan Jefferson, Deputy City Manager
 Eric Oscarson, Deputy City Manager
 Amanda Campos, City Secretary
 Monica Solko, Deputy City Secretary
 Matt Ribitzki, Deputy City Attorney
 Errick Thompson, Director of Public Works & Engineering
 Janalea Hembree, Assistant to the City Manager

1. CALL TO ORDER – 1:30 p.m.

Chair Dan McClendon called the meeting to order. **Time: 1:31 p.m.**

2. CITIZEN APPEARANCES

- No speakers.

3. GENERAL**A. Minutes from the April 3, 2024 Infrastructure & Development committee meeting. (Staff Contact: Amanda Campos, City Secretary)**

Motion made by Chris Fletcher and seconded by Phil Anderson to approve.

Motion passed 3-0.

B. Receive a report, hold a discussion, and provide direction regarding the Pavement Management Program and Pavement Maintenance Scenarios. (Staff Contact: Janalea Hembree, Assistant to the City Manager)

Janalea Hembree, Assistant to the City Manager, presented Pavement Management Program and Pavement Maintenance Scenarios to the committee.

Discussion included history (background), pavement condition assessment, pavement management plan, maintenance and capital improvement activities, and scenario outline.

Summary of Scenarios

Scenario	Years	O&M Dollars	Capital Dollars	Total Budget	Beginning OCI	5 Year OCI	10 Year OCI
1	10	\$ -	\$ -	\$ -	69.0	60.0	52.0
2	5	\$ 3,716,394	\$ 10,855,620	\$ 14,572,014	69.0	62.5	56.0
3	5	\$ 12,211,011	\$ 10,855,146	\$ 23,066,157	69.0	65.8	62.7
4	5	\$ 3,716,395	\$ 24,998,033	\$ 28,714,428	69.0	64.0	59.5
5	5	\$ 12,211,011	\$ 24,993,389	\$ 37,204,400	69.0	67.3	66.0
6	5	\$ 24,984,410	\$ 71,869,910	\$ 96,854,320	69.0	75.0	--
7	10	\$ 33,554,832	\$ 127,444,231	\$ 160,999,063	69.0	--	75.0

Committee discussed capital expenditures with backlog, current CIP, the impact to the CIP, debit, street maintenance fee, rough proportionality study, and communication with residents.

Staff will work on a timeline and goal, but will first work on the backlog to give Council a fair assessment of how long it will take to get there. A five-year goal may need to consider starting at ten years to maintain the 69 OCI score while staff works on the backlog.

The committee was in favor of bringing an item to the full council for consideration.

C. Receive a report, hold a discussion, and provide staff feedback regarding Pavement Maintenance. (Staff Contact: Justin Scharnhorst, Deputy Director of Public Works)

Justin Scharnhorst, Deputy Director of Public Works, gave an update on pavement maintenance to the committee.

Discussion included background, typical maintenance activities, preventative maintenance planning, enhanced asphalt patching (interim relief), concrete versus asphalt, and costs.

After a brief discussion and questions from the committee, the committee was in favor and requested that the item be brought to the full council for consideration.

4. BOARD REQUESTS FOR FUTURE AGENDA ITEMS OR REPORTS

- None.

5. EXECUTIVE SESSION

In accordance with Chapter 551 of the Texas Government Code, the Committee may convene in Executive Session in the City Council Workroom at City Hall to conduct a closed meeting to discuss any item listed on this agenda.

A. Pending or Contemplated Litigation or to Seek the Advice of the City Attorney Pursuant to Section 551.071

No executive session needed.

6. ADJOURN

There being no further discussion Chair Dan McClendon adjourned the meeting.

Time: 3:06 p.m.

Monica Solko
Deputy City Secretary

Infrastructure & Development Committee

DEPARTMENT: Public Works
FROM: Daryl Uptmore, Deputy Director
MEETING: February 19, 2025

SUBJECT:

Receive a report and provide possible recommendations on an update to the City's Water Service Line Inventory. (*Staff Contact: Daryl Uptmore, Deputy Director of Public Works*)

SUMMARY:

The United States Environmental Protection Agency (EPA) and Texas Commission on Environmental Quality (TCEQ) have worked on evolving regulations since at least 2021 focused on protecting communities from the risks of lead and copper exposure found in drinking water. These regulations, known as the Lead and Copper Rule Revisions (2021) and Lead and Copper Rule Improvements (2024) strengthen the protections that public water systems, such as the City of Burleson, need to meet when providing water to its customers. Staff will provide an overview of the regulations, compliance activities to date, and upcoming compliance requirements.

RECOMMENDATION:

N/A

PRIOR ACTION/INPUT (Council, Boards, Citizens):

N/A

REFERENCE:

N/A

FISCAL IMPACT: N/A

Proposed Expenditure:
Account Number:
Fund:
Account Description:

STAFF CONTACT:

Daryl Uptmore
Deputy Director of Public Works
duptmore@burlesontx.com
817-426-9835

Water Service Line Inventory Update

Infrastructure & Development Committee

Presentation Outline

- Background
- Compliance Activities
- Upcoming Requirements



Background: Burleson Water Quality



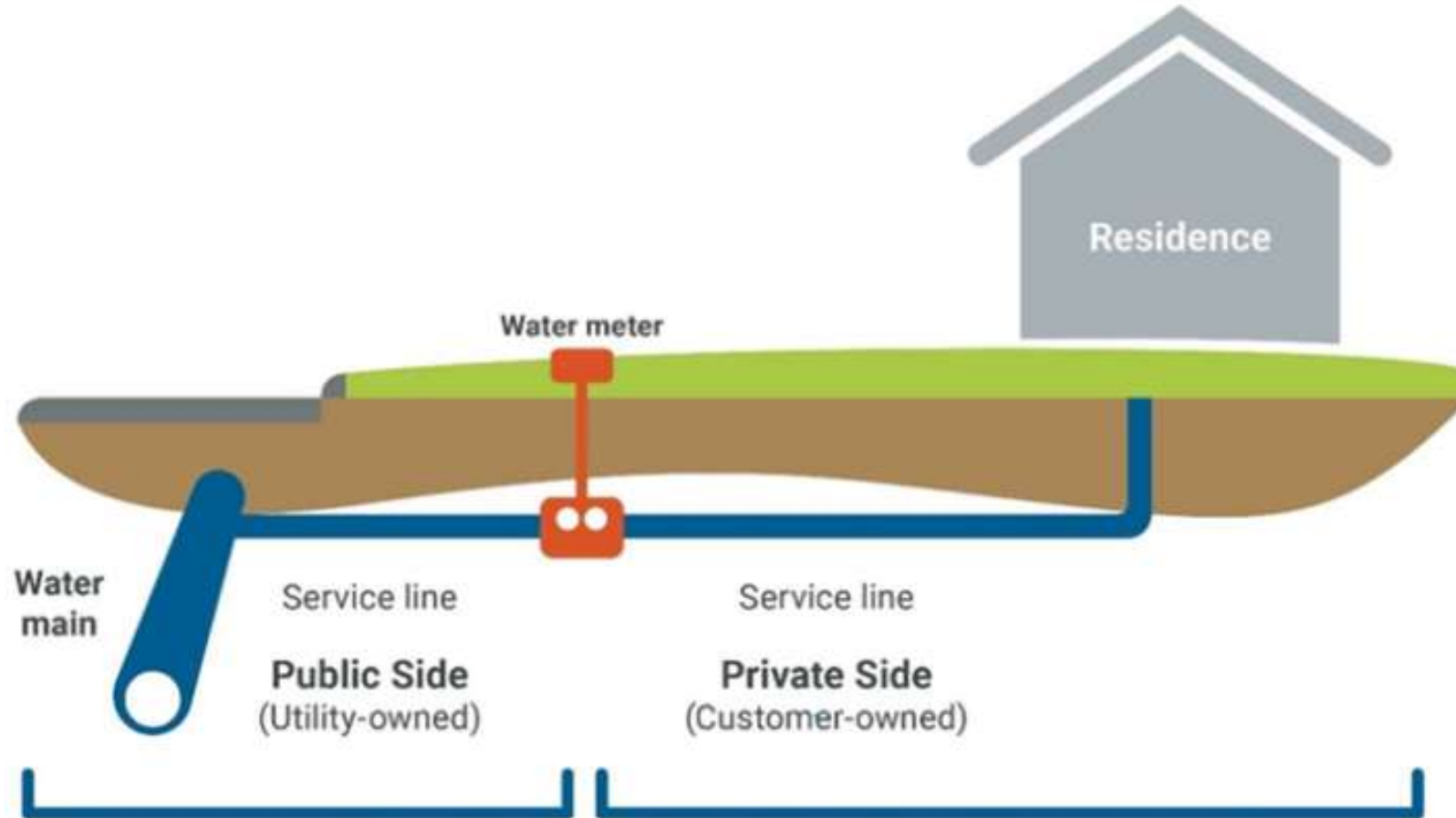
Item A.

Burleson routinely samples and tests drinking water as required by EPA and TCEQ. Those test results are reflected in our Water Quality Report published annually.

Lead and Copper (Samples are taken every three years. The next round of sampling will take place in 2026)						
Year	Contaminant	The 90th Percentile	Number of Sites Exceeding Action Level	Action Level	Unit of Measure	Source of Contaminant
2023	Lead	0.0014	0	0.015	mg/L	Corrosion of household plumbing systems; erosion of natural deposits.
2023	Copper	0.4030	0	1.3	mg/L	Corrosion of household plumbing systems; erosion of natural deposits; leaching from wood preservatives.

*Excerpt from FY2023 Report, FY2024 report due in July 2025

Background: Water Service Lines



Background: Regulations

Evolving federal and state rules require public water systems to develop inventories of water service lines

EPA and the **Texas Commission on Environmental Quality** (TCEQ) have released updated standards to protect communities from the risks of lead and copper exposure found in drinking water.

Lead and Copper Rule Revisions (2021) and **Lead and Copper Rule Improvements** (2024) strengthen the protections that public water systems, such as the City of Burleson, need to meet when providing water to its customers.

EPA released guidance and notified public water systems to begin developing service line inventories in August 2022.

Compliance Activities by Staff to Date

- Staff developed inventory of all 15,543 service lines (city and private portions) August 2022 – early October 2024
- Staff submitted inventory to TCEQ by October 16, 2024 deadline



Compliance Activities: Initial Inventory

Rules require replacement

Part 2. Inventory Summary Table ¹		
When using the Detailed Inventory worksheet, the classifications in the Column "Entire Service Line Material Classification" (Column Q) will be used to calculate the total number of service lines for each of the four material classifications below. Remember this is the classification for the entire service line.		
Service Line Material Classification	Definition	Total Number of Service Lines (REQUIRED to be reported under the LCRR) ^x
Lead	Any portion of the service line is known to be made of lead. ²	5
Galvanized Requiring Replacement (GRR)	The service line is not made of lead, but a portion is galvanized and the system is unable to demonstrate that the galvanized line was never downstream of a lead service line.	219
Non-Lead	All portions of the service line are known NOT to be lead or GRR through an evidence-based record, method, or technique.	15,319
Lead Status Unknown	The service line material is not known to be lead or GRR. For the entire service line or a portion of it (in cases of split ownership), there is not enough evidence to support material classification.	0
TOTAL		15,543
Notes		
¹ This summary table is for reporting material for the entire service line connecting the water main to the customer's plumbing. See the Classifying SLs worksheet for additional guidance on assigning a materials classification to the entire service line when ownership is split. Remember that systems must track the system-owned and customer-owned portions separately in their inventory.		
² A lead-lined galvanized service line is consistent with the definition of an LSL under the LCRR ("a portion of pipe that is made of lead, which connects the water main to the building inlet") (40 CFR §141.2) and must therefore be classified in the inventory as an LSL. Do not, however, count non-lead service lines with a lead gooseneck or pigtail as lead service lines.		

Compliance Activities by Staff to Date

- Mailed notifications (based on EPA templates) November 15, 2024 to 224 properties identified as having either lead or galvanized service lines
- Published interactive map online November 15, 2024 (not required, but as an additional means of communicating to the public)



Notice of Confirmed Galvanized Service Line (that is or was possibly downstream of a lead service line)

**Notice of Confirmed Galvanized Service Line
(that is or was possibly downstream of a lead service line)**

Public Water System Name:	City of Burleson	PWS ID No.:	TX1240002
Service Line Location:	Date: November 15, 2024		

Dear Drinking Water Consumer,

The Burleson public water system is focused on protecting the health of every household in our community. This notice contains important information about your drinking water. Please share this information with anyone who drinks and/or cooks using water at this property. In addition to the people directly served at this property, this could and should include people in apartments, nursing homes, schools, businesses, as well as parents served by childcare at this property.

It has been determined that either a portion of, or the entire water pipe (called a service line) that connects your home, building, or other structure to the city's water main is made from **galvanized material** that may have adsorbed lead. EPA has defined these service lines as "galvanized requiring replacement"¹. Our records either indicate that a lead service line pipe may be present or might have been present in the past.

Galvanized service lines that have adsorbed lead can contribute to lead in drinking water. People living in homes with a galvanized service line that has adsorbed lead may have an increased risk of exposure to lead from their drinking water.

This determination was made through a combination of field inspections and document review by staff as part of the EPA-required service line inventory completed for the entire water system. You can view the results for your property using the interactive water service line map now available on the city's website at <https://www.burlesontx.com/800/Maps>. By entering your address and then clicking on the icon shown on your property, you will see the current data in the inventory. This will be a living document that is updated as new information is developed.

If you have questions concerning any of the information provided in this notice, or if you have information that could help us better describe your service line, contact us via the city's 311 system by submitting a **General** service request (<https://burlesontx.my.site.com/notifications/>) and referencing "Water Service Line Notice" in your request.

Health Effects of Lead
Exposure to lead in drinking water can cause serious health effects in all age groups. Infants and children can have decreases in IQ and attention span. Lead exposure can lead to new learning and behavior problems or worsen existing learning and behavior problems. The children of women who are exposed to lead before or during pregnancy can have increased risk of these negative health effects. Adults can have increased risks of heart disease, high blood pressure, and kidney, or nervous system problems.

Steps you can take to reduce lead in drinking water.
Below are recommended actions that you may take, separately or in combination, if you are concerned about lead in your drinking water. The list also includes where you may find more information and is not intended to be a complete list or to imply that all actions equally reduce lead in drinking water.

¹ Refers to a galvanized service line that is or was at any time downstream of a lead service line or is currently downstream of a "Lead Status Unknown" service line.

- **Use your filter properly.** Using a filter can reduce lead in drinking water. If you use a filter, it should be certified to remove lead. Read any directions provided with the filter to learn how to properly install, maintain, and use your cartridge and when to replace it. Using the cartridge after it has expired can make it less effective at removing lead. Do not run hot water through the filter. For more information on facts and advice on home water filtration systems, visit EPA's website at https://www.epa.gov/water-research/consumer-task-item?utm_source=point-use-and-pitcher-filters-certified-reduce-lead.
- **Clean your aerator.** Regularly remove and clean your faucet's screen (also known as an aerator). Sediment, debris, and lead particles can collect in your aerator. If lead particles are caught in the aerator, lead can get into your water.
- **Use cold water.** Do not use hot water from the tap for drinking, cooking, or making baby formula as lead dissolves more easily into hot water. Boiling water does not remove lead from water.
- **Learn about construction in your neighborhood.** Construction may cause more lead to be released from a lead service line or galvanized service line if present. Contact us to find out about any construction or maintenance work that may disturb your service line.
- **Have your water tested.** You may contact a certified laboratory to have your water tested for lead. A list of certified laboratories is available at <https://www.texas.gov/divisions/drinking-water/quality-issues/where-to-get-your-water-tested>. Note, a water sample may not adequately capture or represent all sources of lead that may be present. For information on sources of lead that include service lines and interior plumbing, please visit <https://www.epa.gov/ground-water-and-drinking-water/lead-information-about-lead-in-trinking-water/basics>.
- **Get your child tested to determine lead levels in their blood.** A family doctor or pediatrician can perform a blood test for lead and provide information about the health effects of lead. State, city, or county departments of health can also provide information about how you can have your child's blood tested for lead. The Centers for Disease Control and Prevention recommends public health actions when the level of lead in a child's blood is 3.5 micrograms per deciliter (µg/dL) or more. For more information and links to CDC's website, please visit <https://www.epa.gov/ground-water-and-drinking-water/basic-information-about-lead-in-trinking-water>.

Replacing galvanized requiring replacement service lines

Our water system does not currently have a program in place to replace private service lines. If you plan to replace the portion of the service line that you own, please notify us via the 311 system by submitting a **General** service request (<https://burlesontx.my.site.com/notifications/>) and referencing "Water Service Line Notice" in your request, as this is very important input into our periodic updates of our system-wide inventory.

For more information on reducing lead exposure from your drinking water and the health effects of lead, visit EPA's website at <http://www.epa.gov/lead>.

Page 2 of 2

CWR 12.10.2019

11.15.2024

Notice of Confirmed Lead Service Line

Notice of Confirmed Lead Service Line

Public Water System Name:	City of Burleson	PWS ID No.:	TX1260002
Service Line Location:	Date: November 15, 2024		

Dear Drinking Water Consumer,

The Burleson public water system is focused on protecting the health of every household in our community. This notice contains important information about your drinking water. Please share this information with anyone who drinks and/or cooks using water at this property. In addition to the people directly served at this property, this could and should include people in apartments, nursing homes, schools, businesses, as well as parents served by childcare at this property.

It has been determined that either a portion of, or the entire water pipe (called a service line) that connects your home, building, or other structure to the city's water main is made from **lead**. People living in homes with a lead service line may have an increased risk of exposure to lead from their drinking water.

This determination was made through a combination of field inspections and document review by staff as part of the EPA-required service line inventory completed for the entire water system. You can view the results for your property using the interactive water service line map now available on the city's website at <https://www.burlesontx.com/500/hous>. By entering your address and then clicking on the icon shown on your property, you will see the current data in the inventory. This will be a living document that is updated as new information is developed.

If you have questions concerning any of the information provided in this notice, or if you have information that could help us better describe your service line, contact us via the city's 311 system by submitting a **General service request** (<https://burlesontx.my.scs.com/submit/>) and referencing "Water Service Line Notice" in your request.

Health Effects of Lead
Exposure to lead in drinking water can cause serious health effects in all age groups. Infants and children can have decreases in IQ and attention span. Lead exposure can lead to new learning and behavior problems or worsen existing learning and behavior problems. The children of women who are exposed to lead before or during pregnancy can have increased risk of these negative health effects. Adults can have increased risks of heart disease, high blood pressure, and kidney, or nervous system problems.

Steps you can take to reduce lead in drinking water.
Below are recommended actions that you may take, separately or in combination, if you are concerned about lead in your drinking water. The list also includes where you may find more information and is not intended to be a complete list or to imply that all actions equally reduce lead in drinking water.

- Use your filter properly.** Using a filter can reduce lead in drinking water. If you use a filter, it should be certified to remove lead. Read any directions provided with the filter to learn how to properly install, maintain, and use your cartridge and when to replace it. Using the cartridge after it has expired can make it less effective at removing lead. Do not run hot water through the filter. For more information on facts and advice on home water filtration systems, visit EPA's website at <http://www.epa.gov/air-research/consumer-tip-identifying-pureit-use-and-pitcher-filters-certified-reduce-lead>

Page 1 of 2

- Close your aerator.** Regularly remove and clean your faucet's screen (also known as an aerator). Sediment, debris, and lead particles can collect in your aerator. If lead particles are caught in the aerator, lead can get into your water.
- Use cold water.** Do not use hot water from the tap for drinking, cooking, or making baby formula as lead dissolves more easily into hot water. Boiling water does not remove lead from water.
- Learn about construction in your neighborhood.** Construction may cause more lead to be released from a lead service line or galvanized service line if present. Contact us to find out about any construction or maintenance work that may disturb your service line.
- Have your water tested.** You may contact a certified laboratory to have your water tested for lead. A list of certified laboratories is available at <https://www.epa.gov/ground-water-and-drinking-water/lead-testing-laboratory>. Note, a water sample may not adequately capture or represent all sources of lead that may be present. For information on sources of lead that include service lines and interior plumbing, please visit <https://www.epa.gov/ground-water-and-drinking-water/basic-information-about-lead-drinking-water#sources>.
- Get your child tested to determine lead levels in their blood.** A family doctor or pediatrician can perform a blood test for lead and provide information about the health effects of lead. State, city, or county departments of health can also provide information about how you can have your child's blood tested for lead. The Centers for Disease Control and Prevention recommends public health actions when the level of lead in a child's blood is 3.5 micrograms per deciliter (µg/dL) or more. For more information and links to CDC's website, please visit <https://www.epa.gov/ground-water-and-drinking-water/basic-information-about-lead-drinking-water>.

Replacing lead service lines
Our water system does not currently have a program in place to replace private service lines. If you plan to replace the portion of the service line that you own, please notify us via the 311 system by submitting a **General service request** (<https://burlesontx.my.scs.com/submit/>) and referencing "Water Service Line Notice" in your request, as this is very important input into our periodic updates of our system-wide inventory.

For more information on reducing lead exposure from your drinking water and the health effects of lead, visit EPA's website at <http://www.epa.gov/lead>.

Source: DWS.org

Page 2 of 2

Lead in Notice

11.15.2024

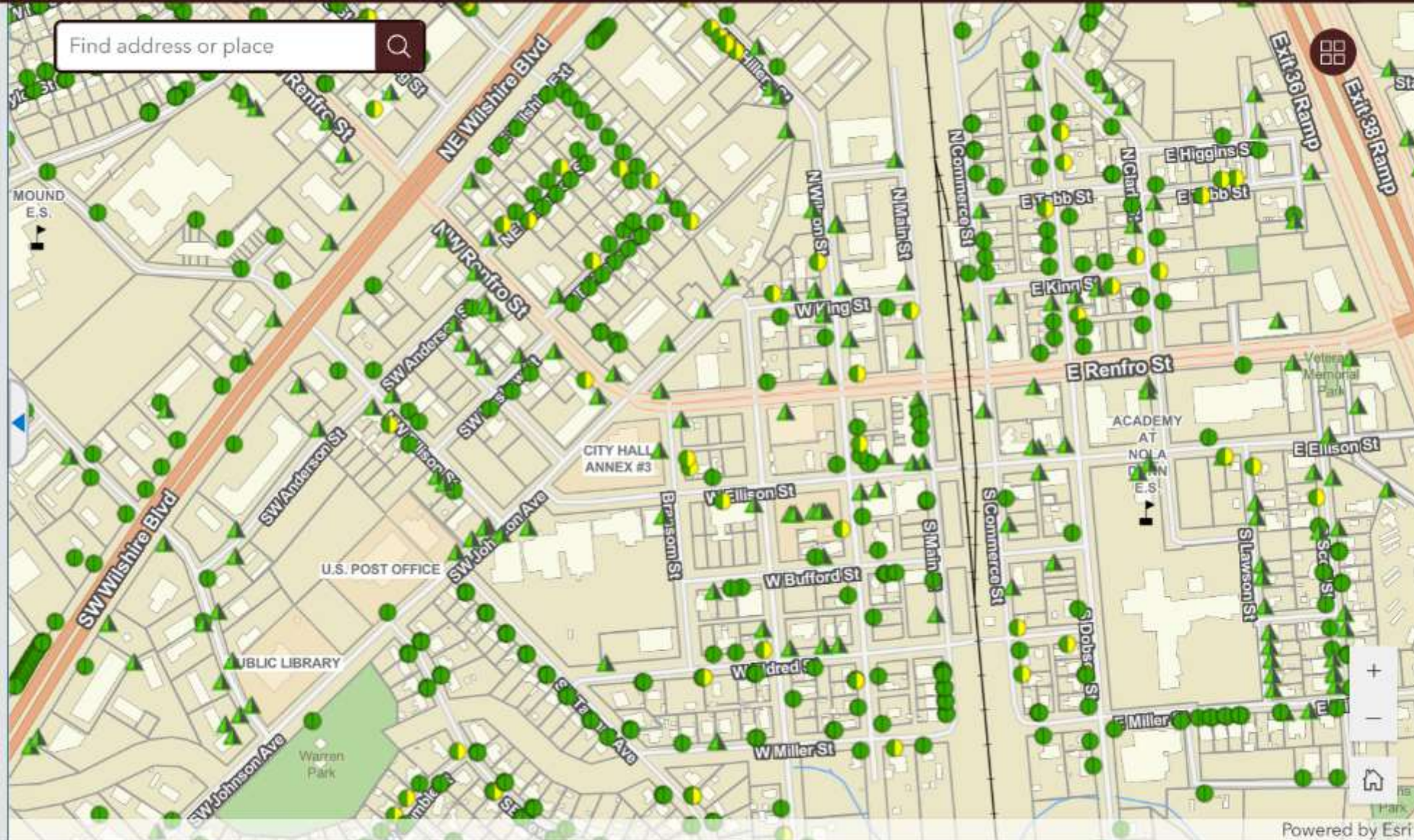
Map Legend

Water Service

City Side | Customer Side

-  Non-Lead | Unknown - Unknown Material
-  Galvanized | Galvanized
-  Galvanized | Non-Lead
-  Non-Lead | Galvanized
-  Non-Lead | Lead
-  Non-Lead | Lead-lined Galvanized
-  Non-Lead | Non-Lead

Available on the City webpage at
<https://www.burlesontx.com/600/Maps>



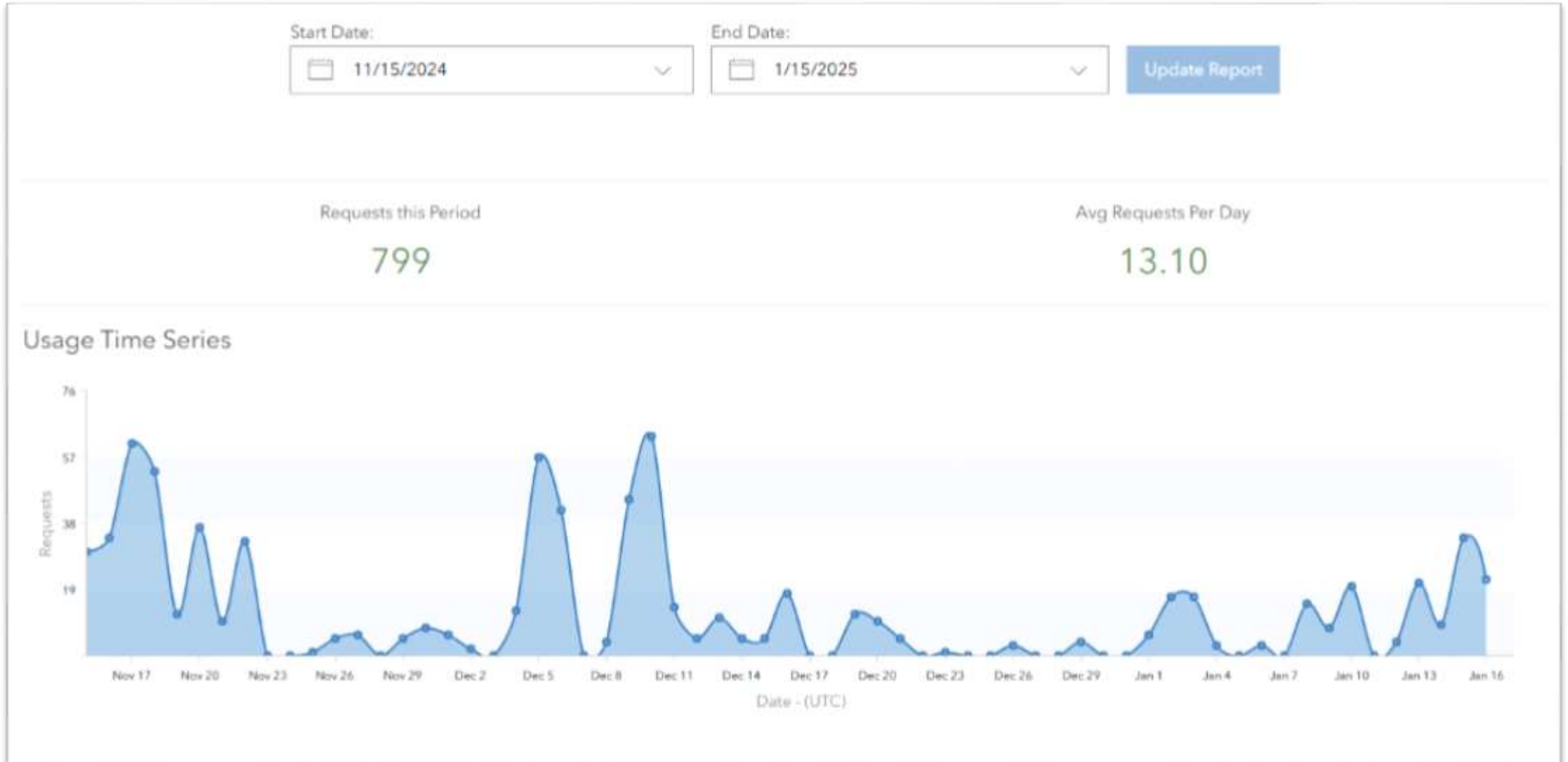
Water Service Line Interactive Map

1st month of usage:



Water Service Line Interactive Map

2nd and 3rd months usage:



Upcoming Requirements

Near term:

- Annual updates of inventory submitted to TCEQ
- Sampling program for certain schools and licensed childcare facilities*
- Service Line Replacement Plan developed by November 1, 2027

Longer-term: 10-year period to replace 224 service lines (by December 31, 2034, and EPA **suggests** replacement of an average of 10% per year)

The Texas Water Development Board offers limited funding programs to assist with replacing service lines. These are typically focused on disadvantaged communities defined as having Annual Median Household Income (AMHI) that is no more than 75% of the State's AMHI

*Lead and Copper Rule Improvements (LCRI) and schools / licensed childcare facilities:

The public water systems must sample 20% of elementary schools and 20% of licensed child-care facilities in their service areas annually for five years. Sampling to begin in November 1, 2027.

- EPA LCRI Fact Sheet October 2024

Service Line Replacement Cost Estimates

Estimated Cost to Property Owner: \$1,600 to \$2,200

Estimates based on the following assumptions:

- Distance: 30-60 ft between property and meter
- Depth: 18"-24"
- Difficulty or obstacles: Trees, rock, driveway, and irrigation
- Grounding rod and lead (\$400 to \$600)
- Polyethylene high density Pipe (PEX-HDPE)

Summary

- **Actions to date**
 - Inventoried **15,543** water service lines, submitted to TCEQ Oct 16, 2024
 - Provided web-based interactive map of service lines
 - Issued notifications to property owners impacted
- **Upcoming requirements**
 - Finalize a service line replacement plan by Nov 1, 2027
 - Communication protocols for public education
 - Replace lead and galvanized service lines to meet ten-year mandate by 2034*
 - Public Accessibility of inventory data is required, with updates posted annually starting Jan 30, 2029



Note: the 10-year replacement goal was established by the previous presidential administration and it is not yet clear how the new administration may revise that goal.

*Reminder: None of the 224 service lines requiring replacement are public service lines.

Topics for Consideration / Discussion / Feedback

Should the City . . .

- Consider implementing programs to assist private property owners offset the cost of replacing their lead or galvanized service lines?
 - If so, should those programs be limited (seniors, disabled, disadvantaged, other)?
 - If so, should we explore implementing a rebate program (property owner hires a plumber to replace the service line and provides documentation to receive the rebate)?
- Consider implementing sustained public education and outreach campaigns to encourage private property owners to address the health risk associated with lead and galvanized service lines?

Questions/Comments

Daryl Uptmore
Deputy Director of Public Works
duptmore@burlesontx.com
817-426-9835

Definitions & Acronyms

- Lead and Copper Rule Improvements (LCRI)
- Lead and Copper Rule Revisions (LCRR)
- Lead Service Line (LSL)
- Galvanized requiring replacement (GRR)
- Service Line: Pipe that connects the water main to the property
- Lead Service Line Replacement-Funding (LSLR-funding)
- Environmental Protection Agency (EPA)
- Texas Commission on Environmental Quality (TCEQ)

Infrastructure & Development Committee

DEPARTMENT: Public Works
FROM: Justin Scharnhorst, Deputy Director
MEETING: February 19, 2025

SUBJECT:

Receive a report and provide possible recommendations on the status of the street maintenance program. (*Staff Contact: Justin Scharnhorst, Deputy Director of Public Works*)

SUMMARY:

Over the past several months, the City has made significant strides in advancing the Street Maintenance Program, working diligently to enhance the condition of our road network through a thoughtful, data-driven approach.

In 2023, a comprehensive street condition assessment was completed by Furgo. This detailed analysis provided invaluable data on the current state of the city's roads, offering insight into the existing lifespan of each road it serviced. This assessment served as the foundation for the development of the street maintenance strategy. In March 2024, the City Council adopted its first Asset Management Policy, which formalized the city's approach to managing and enhancing its assets. This policy laid the groundwork for a centralized and systematic approach to asset management. Alongside this, funding was allocated to enhance street maintenance and operations, marking a pivotal step toward a more efficient, data-driven program.

Public Works received the data from the asset management system and began the verification process in late November 2024. This verification process consisted of visually inspecting every road segment in the proposed plan. This real-world inspection allowed staff to cross-check the asset management data with actual conditions, identifying discrepancies, addressing data inconsistencies, and ensuring that the maintenance strategy accurately reflected the true state of each street. This careful verification process ensures that the data driving our decisions is accurate and reliable, providing the foundation for more effective planning and resource allocation.

As part of this verification process, Public Works staff also reviewed and considered other market applications for street maintenance. This research and input led to the recommendation of a treatment option that significantly extends the life expectancy of the roads it is applied to. This option, which had not been included in the original Asset Management Program, is now a key element of our strategy. Public Works is now proposing to treat more locations at the same budget, thereby providing a greater impact on the community and addressing a larger quantity of road segments.

RECOMMENDATION:

N/A

PRIOR ACTION/INPUT (Council, Boards, Citizens):

March 2024 -City Council adopted an asset management policy
September 2024 – Asset Management Scenario was presented to Council
November 2024 – A portion of the dedicated funding to street maintenance was awarded to Reliable Paving for concrete work.

REFERENCE:

N/A

FISCAL IMPACT:

N/A

STAFF CONTACT:

Name: Justin Scharnhorst
Title: Deputy Director of Public Works
jscharnhorst@burlesontx.com
817-426-9646



Pavement Maintenance Program Update

INFRASTRUCTURE & DEVELOPMENT COMMITTEE

Background

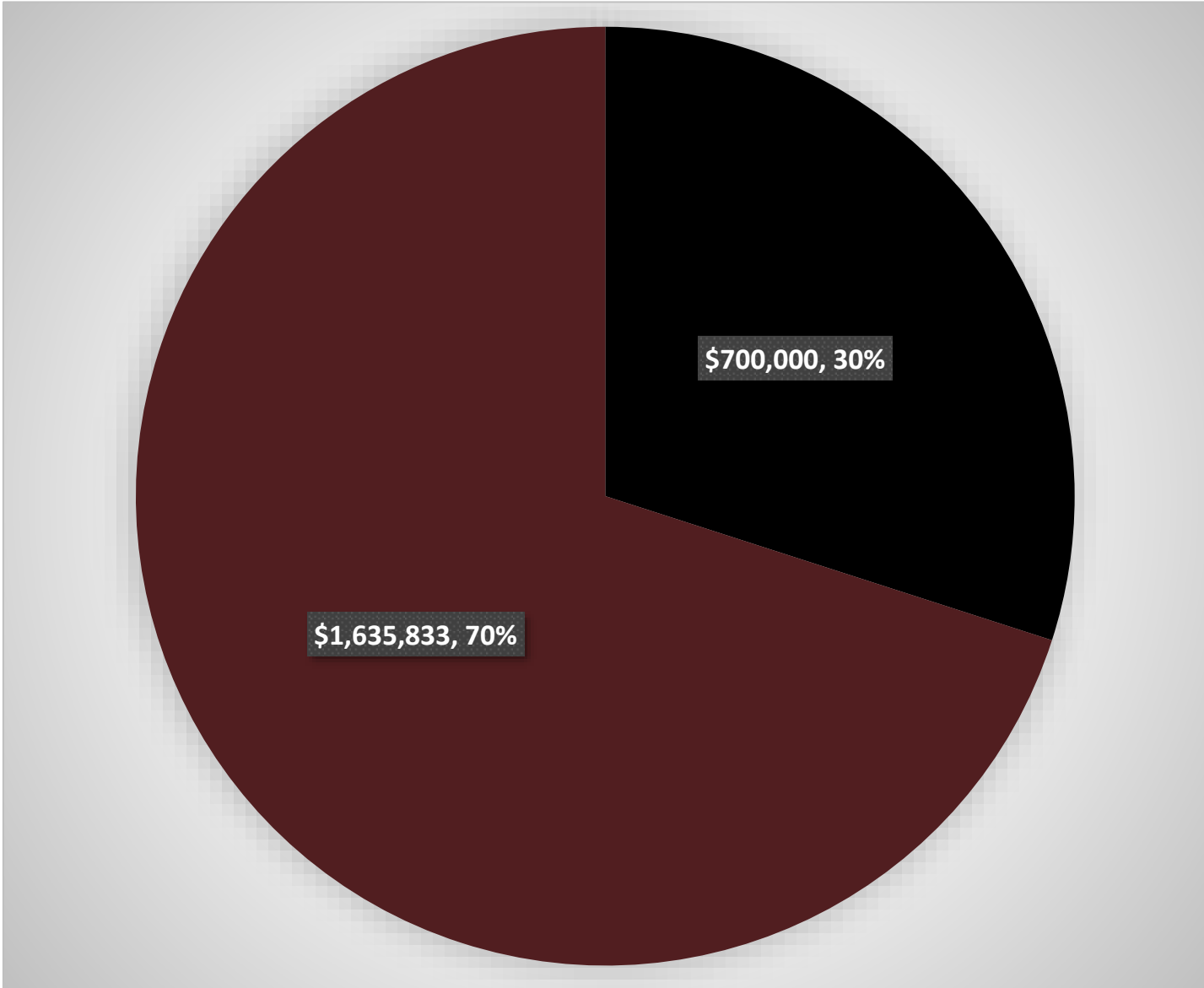
- Based on direction from the Infrastructure & Development Committee in August of 2024, and City Council in September of 2024, Asset Management and Public Works begin to calibrate the model for the street maintenance program.
- In November of 2024, the field verification began, which consisted of visually inspecting every road segment in the proposed plan.
- This inspection allowed Public Works staff to cross-check the asset management data with actual conditions, identifying discrepancies, addressing data inconsistencies, and ensuring that the maintenance strategy accurately reflected the true state of each street.

Street Maintenance Program Budget

- Total allocated budget for the Street Maintenance and repairs
- \$2,353,833 million

- Concrete repairs – Alsbury, Renfro & Hidden Creek
- \$700,000

- Pavement Maintenance – Crack Seal, Pressure Pave, Mill & Overlay
- \$1,635,833



Completed and In-Progress Concrete Repairs



Using FY23-24 funds these locations have been completed or are in progress.

Completed:

NW Renfro @ Silver Ridge Ct	\$20,530
1200 blk W/B E HCP	\$16,800
W HCP @ SW Wilshire Blvd	\$10,640
900 blk Hidden Vistas Blvd	\$49,270

In-Progress:

200 blk E/B SW Alsbury Blvd	\$105,942
-----------------------------	-----------

Total Spent	\$203,182
--------------------	------------------

	Estimated Cost	Comments
Work completed since August 5, 2024		
1200 Blk Hidden Creek Parkway	\$16,800	FY 23-24 Operating Budget
NW Renfro and Silver Ridge	\$20,530	FY 23-24 Operating Budget
HW 174 and Hidden Creek Parkway	\$10,640	FY 23-24 Operating Budget
Alsbury Blvd – 3 locations	\$125,000	FY 23-24 Operating Budget
Current and upcoming projects		
15 locations along Hidden Creek Parkway Between SH 174 and E. Renfro, NW Renfro and Alsbury	\$700,000	FY 24-25 Street Maintenance Fund
Hidden Creek @ Lisa/1285 block	\$237,094	Work is underway – FY 24-25 Street Maintenance Fund
Hidden Creek @ Cardinal Ridge	TBD	FY 24-25 Street Maintenance Fund
Hidden Creek @ Dobson/Hidden Oaks	TBD	FY 24-25 Street Maintenance Fund

Concrete Repairs

Recommendations

Asset Management Recommendation

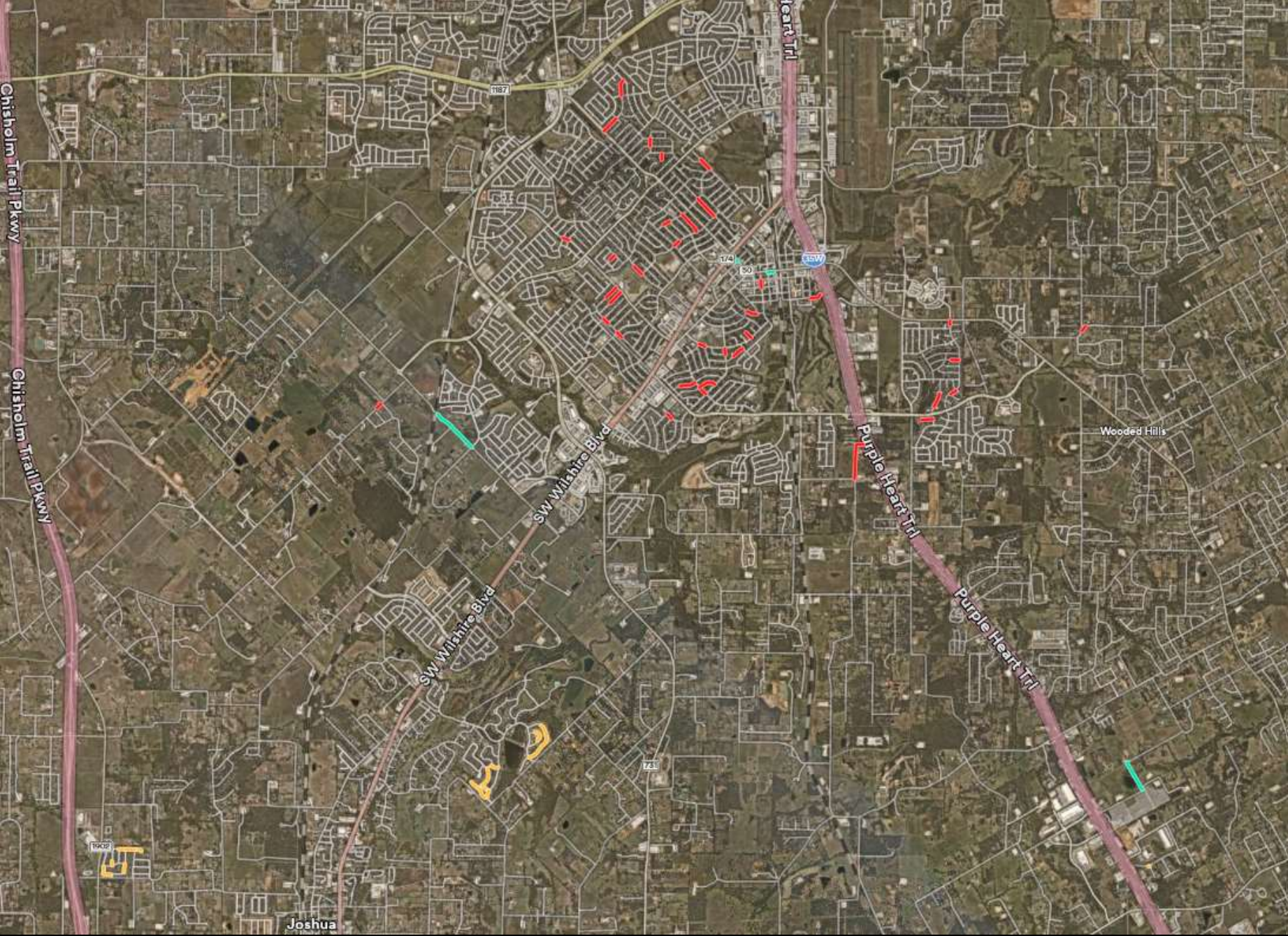
Asset Management Model	Estimated Cost
Asphalt Maintenance Sealing	\$115
Microsurface	\$44,727
Mill & Overlay	\$1,554,925
Concrete Joint Sealing	\$231.06
Total	\$1,599,999

Public Works Recommendation

Public Works Model	Estimated Cost
Asphalt Maintenance Sealing	\$150,000
Pressure Pave	\$594,676
Mill & Overlay	\$838,570
Concrete Joint Sealing	\$4,410.00
Contingency	\$12,342
Total	\$1,599,999

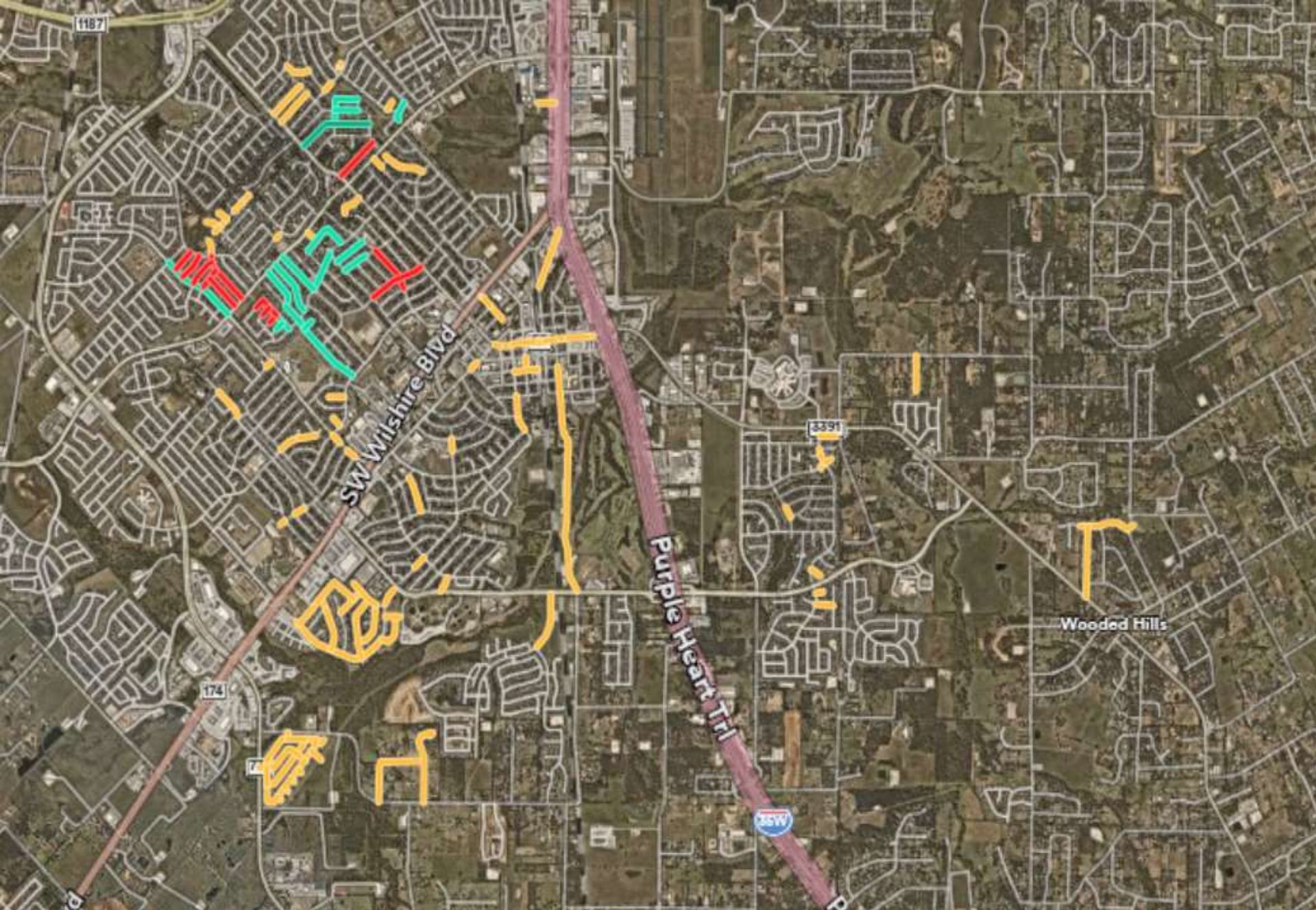
Asset Management Recommendations

- Red – Mill & Overlay – Full Depth Repair
- Yellow – Crack and Concrete Joint Seal
- Green - Microsurface



Public Works Recommendations

- Red – Mill & Overlay - Full Depth Repair
- Yellow – Crack and Concrete Joint Seal
- Green – Pressure Pave



Public Works Recommendations

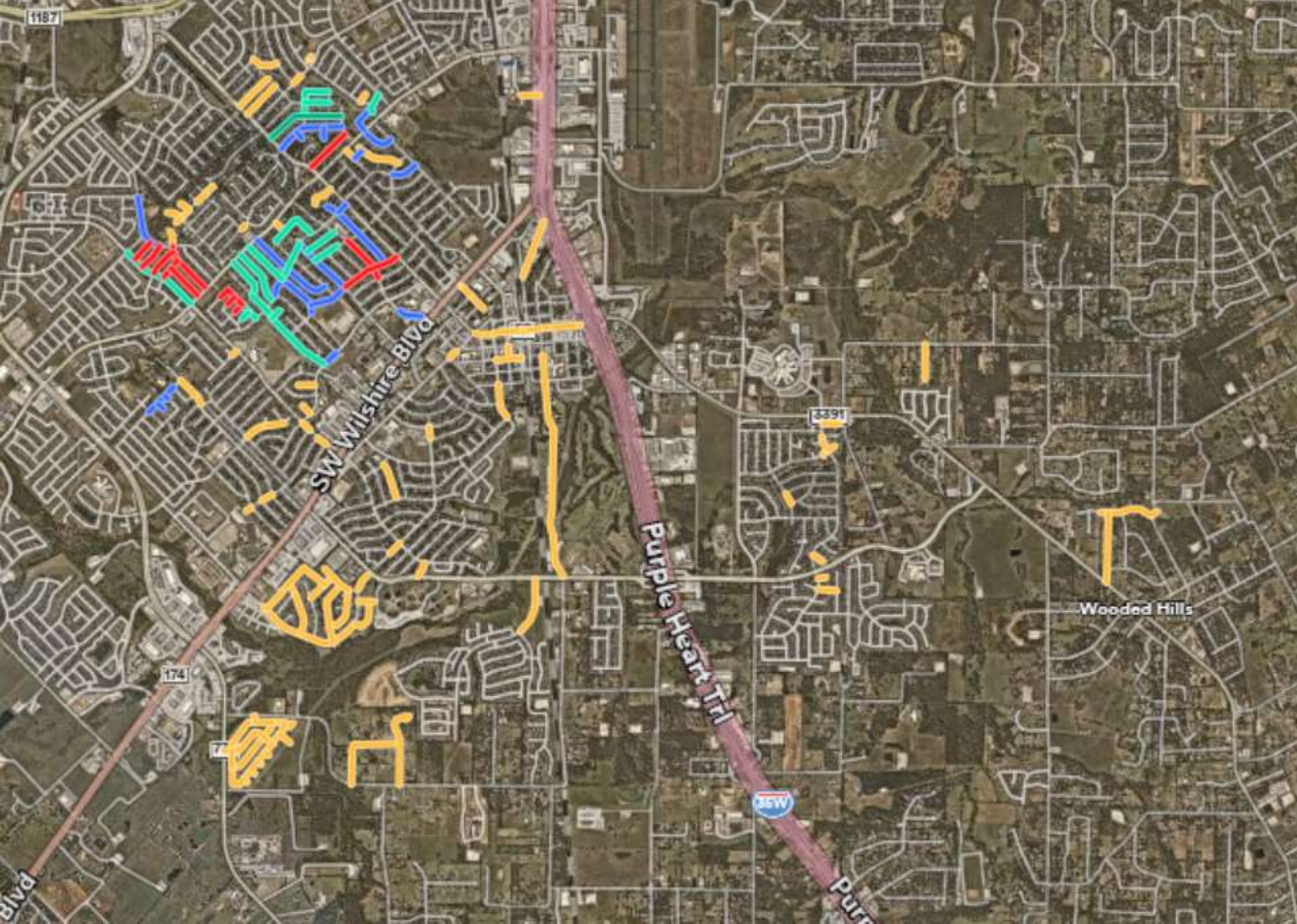
Maintenance Activity	Number of Locations	Linear Feet	Activity Estimated Cost
Asphalt Crack Seal	88	46,010	\$150,000
Pressure Pave	35	17,846	\$594,676
2" Mill & Overlay – Full Depth	22	9,964	\$838,570
Concrete Joint Sealing	1	1,470	\$4,410
Contingency			\$12,342
Total	146	75,290	\$1,599,999

Ongoing Progress

- Procurement Process
 - Advertised January 24th
 - Bids due February 27th
 - Council date for contract award March 24th
- Upcoming agenda item for Pressure Pave March 24th
- FY 25 for Street Maintenance
 - \$700,000 – Reliable Paving – Approved November 2024
 - \$600,000 - PressurePave
 - \$1,053,833 – Current Solicitation

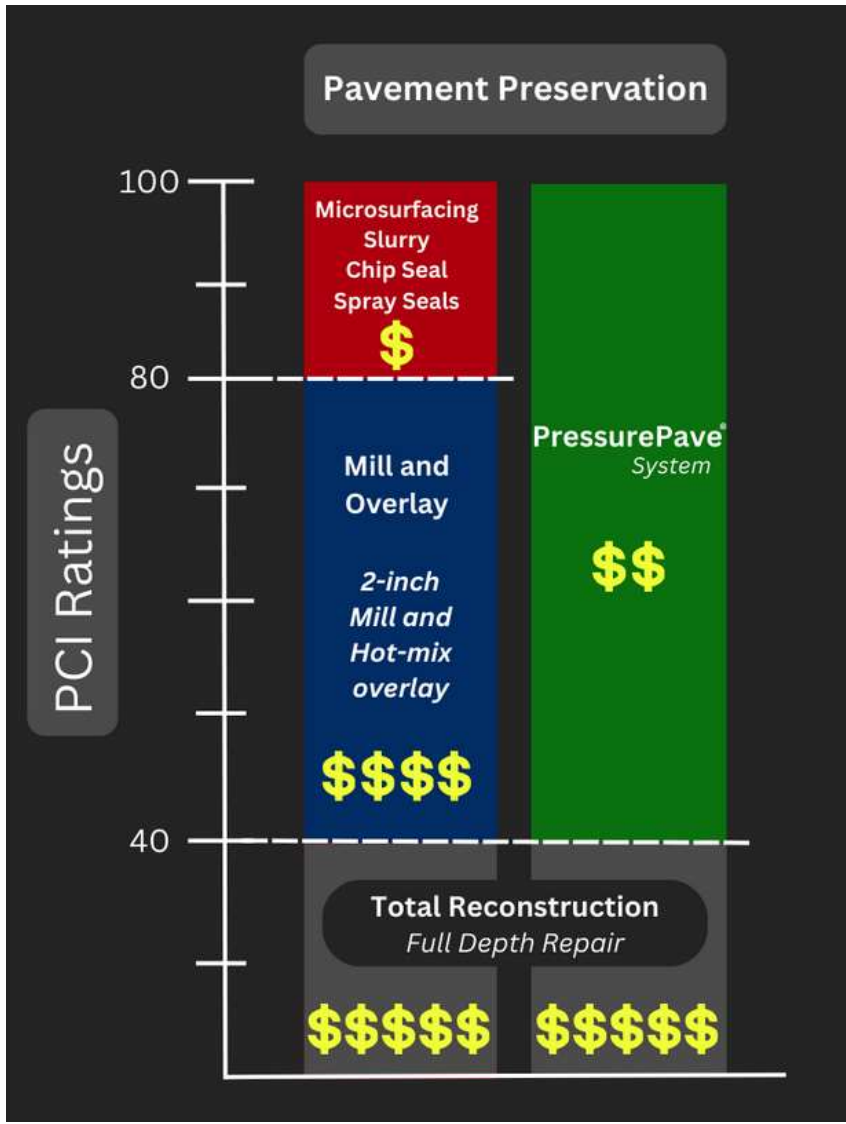
Pavement Treatment Map

*Contractors will have 75 business days to complete the work from the date of the notice to proceed



Public Works Pavement Plan

- Red – Mill & Overlay – Full Depth Repair
- Yellow – Crack and Concrete Joint Seal
- Green – Pressure Pave
- Blue – Capital Projects



What is PressurePave?

PressurePave is an innovative, patented system designed to preserve pavements that might otherwise be slated for mill and overlay processes. This system uses a unique pressure-injection method to apply crack sealant into the pavement while simultaneously overlaying it with a durable thin asphalt layer.

Key Benefits of PressurePave:

- **15-Year Service Life:** Provides long-lasting durability.
- **Quick Accessibility:** Treated areas are traffic-ready in just 30 minutes.
- **Complete Crack Sealing:** Ensures 100% of cracks are effectively sealed.
- **Crack-Resistant Underseal:** Enhances structural integrity beneath the surface.
- **New Overlay Appearance:** Offers a fresh, aesthetically pleasing finish.
- **Enhanced Impact:** Delivers greater value and functionality to treated streets.

Examples of Cities Using PressurePave



- Irving
- Cedar Park
- Midlothian
- Waxahachie
- San Angelo

Crack Seal



Crack Seal application



Reasons to Crack Seal

Preventive maintenance:

- Catching small cracks early and sealing them prevents them from expanding and causing more severe damage like potholes.

Water intrusion protection:

- Sealing cracks stops water from penetrating the asphalt base, which can erode the underlying structure.

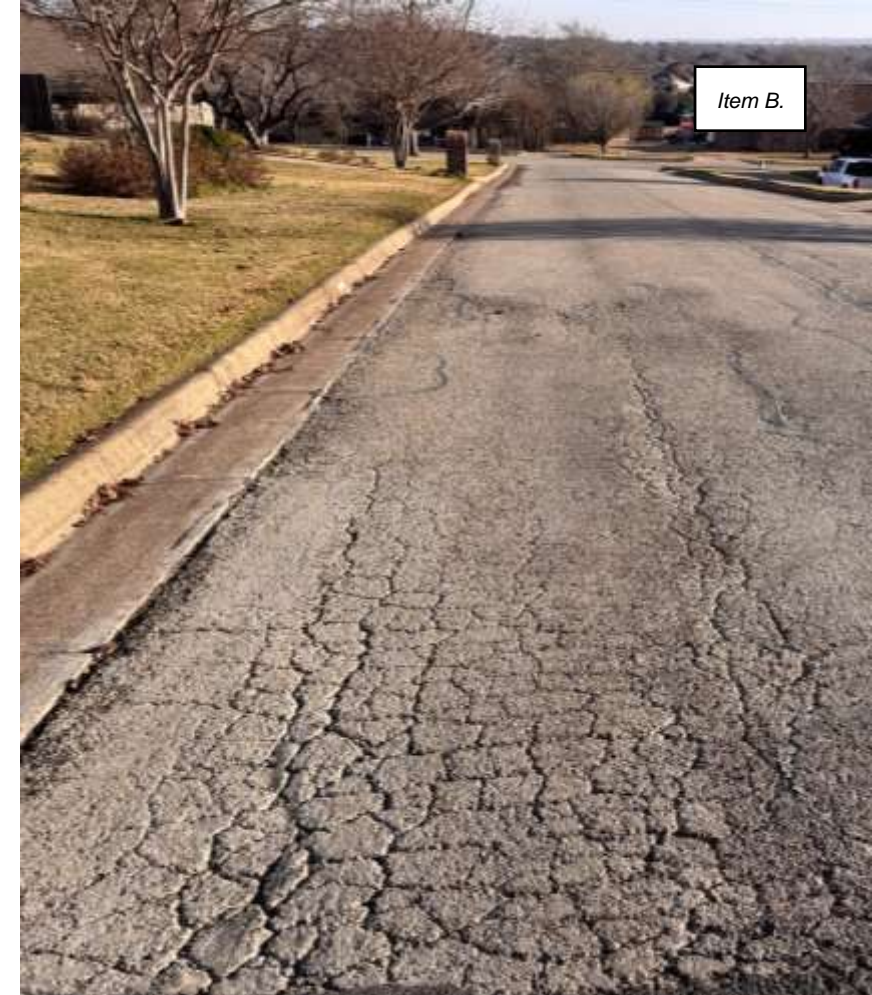
Improved longevity:

- By preventing water damage, crack sealing can significantly extend the lifespan of an asphalt surface.

Cost-effective repair:

- Addressing cracks early through crack sealing is generally cheaper than larger damages later.





Item B.

Mill & Overlay – Full Depth Repair

Benefits of Mill & Overlay

Mill and Overlay Process:

- Street maintenance technique that involves removing the top layer of asphalt with a milling machine, and overlaying new asphalt

Smooth driving surface:

- By addressing minor deformations, cracking, and irregularities

Aesthetic appeal:

- Enhances appearance of the pavement with a fresh, dark surface

Improved drainage:

- By restoring proper drainage flow and preventing water from accumulating and damaging pavement base

Base Repair:

- Provides correction to base failures leading to uneven travel patterns, sinking, and other irregularities that impact driving

Summary of Recommendations:

Strategic Collaboration:

- Eliminated redundant repairs by aligning with future reconstruction plans.
- Focused on reducing mobilization costs and improving project efficiency.

Expanded Scope:

- Increased the total number of roadway segments receiving treatment, yielding a wider community benefit.

Innovative Treatment Solutions:

- Researched and implemented alternative treatment options that enhance roadway infrastructure and expand impact potential.

Ongoing assessments will refine and enhance future strategies.

Questions/Discussion

Justin Scharnhorst
Deputy Director of Public Works
jscharnhorst@burlesontx.com
817-426-9646

Infrastructure & Development Committee

DEPARTMENT: City Manager's Office
FROM: Tommy Ludwig, City Manager
MEETING: February 19, 2025

SUBJECT:

Receive an update on upcoming committee agenda topics. (*Staff Contact: Tommy Ludwig, City Manager*)

SUMMARY:

This purpose of this memo is to provide the infrastructure & Development Committee a brief update on two initiatives being developed for next quarter's committee meeting agenda.

On April 1, 2024, City Council approved a contract with Terracon Consultants, Inc. to develop a City Facility Masterplan and Condition Assessment. To date the consultants have completed the physical inventory and condition assessment of facilities. The data from this effort will be used going forward to help the City plan and prioritize investments in maintaining and renewing existing facilities as well as evaluating our long-term facility maintenance strategy. This data is also a key input into developing a facility masterplan. The consultants are scheduled to meet with individual City departments over the month of February for input and the draft masterplan is anticipated to be complete and ready for review with the committee at its May 21, 2025 meeting.

On May 20, 2024, City Council approved a professional services agreement with Birkhoff, Hendricks & Carter, LLP for the Assessment of Long-term Water Supply Strategies project. The purpose of this project is to identify feasible alternatives to supplement the City's water supply needs currently provided through agreement with the City of Fort Worth. To date, the consultant team has completed an extensive preliminary data compilation and review focused on the City of Fort Worth, Tarrant Regional Water District, City of Burleson, and Johnson County Special Utility District (JCSUD) to determine which regional entities may have additional water supplies that may present feasible options for Burleson. A meeting was held with JCSUD in late December to explore preliminary concepts and additional meetings with other entities are being confirmed. The consultant team is anticipated to have their midpoint update presentation to update the committee and council in May (committee) and June (council).

RECOMMENDATION:

N/A

PRIOR ACTION/INPUT (Council, Boards, Citizens):

April 1, 2024 – City Council approved a contract with Terracon Consultants, Inc. for a City Facility Master Plan and Condition Assessment through TIPS Cooperative Purchasing Agreement # 210602 in the amount of \$247,604.

May 20, 2024 – City Council approved a Professional Services Agreement with Birkhoff, Hendricks & Carter, LLP in the amount of \$166,788 for the Assessment of Long-term Water Supply Strategies project.

REFERENCE: N/A

FISCAL IMPACT: N/A

Proposed Expenditure/Revenue:

Account Number(s):

Fund:

Account Description:

STAFF CONTACT:

Tommy Ludwig

City Manager

tludwig@burlesontx.com

817-426-9623