



# **TOWN OF BRISTOL, RHODE ISLAND**

## TECHNICAL REVIEW COMMITTEE

### Technical Review Committee Agenda

Thursday, October 19, 2023 at 11:00 AM

Community Development Office Conference Room, 235 High Street,  
1st Floor, Bristol, RI 02809

**A. Pledge of Allegiance**

**B. Concept Review**

**B1.** for a revised campus for Colt-Andrews Schools at 570-574 Hope Street with a re-configured Bradford Street between Hope Street and Central Street.

**C. To join the Zoom Meeting**

<https://us06web.zoom.us/j/82418631365?pwd=CTrLsrs3qiVT6IQrvCs2W8pC4sp8f7.1>

Meeting ID: 824 1863 1365

Passcode: 825123

Date: October 17, 2023

By: mbw



# Bristol Warren Regional School District

## RIDE Necessity of School Construction Stage II

---

# Bristol Warren Regional School District

---

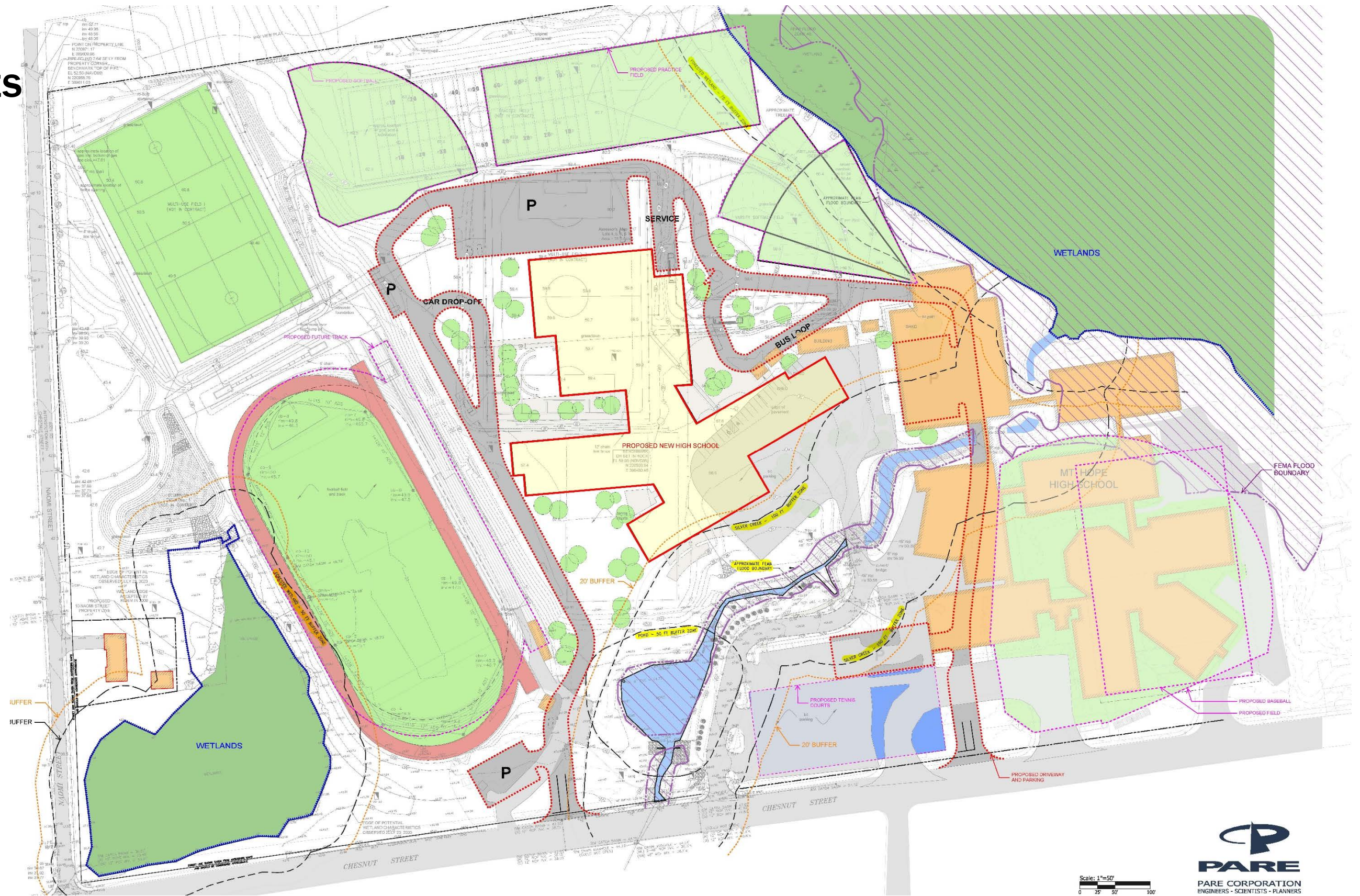
**MOUNT HOPE HIGH SCHOOL**

**PERKINS —  
EASTMAN**  
*Human by Design*

# Existing Site

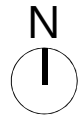
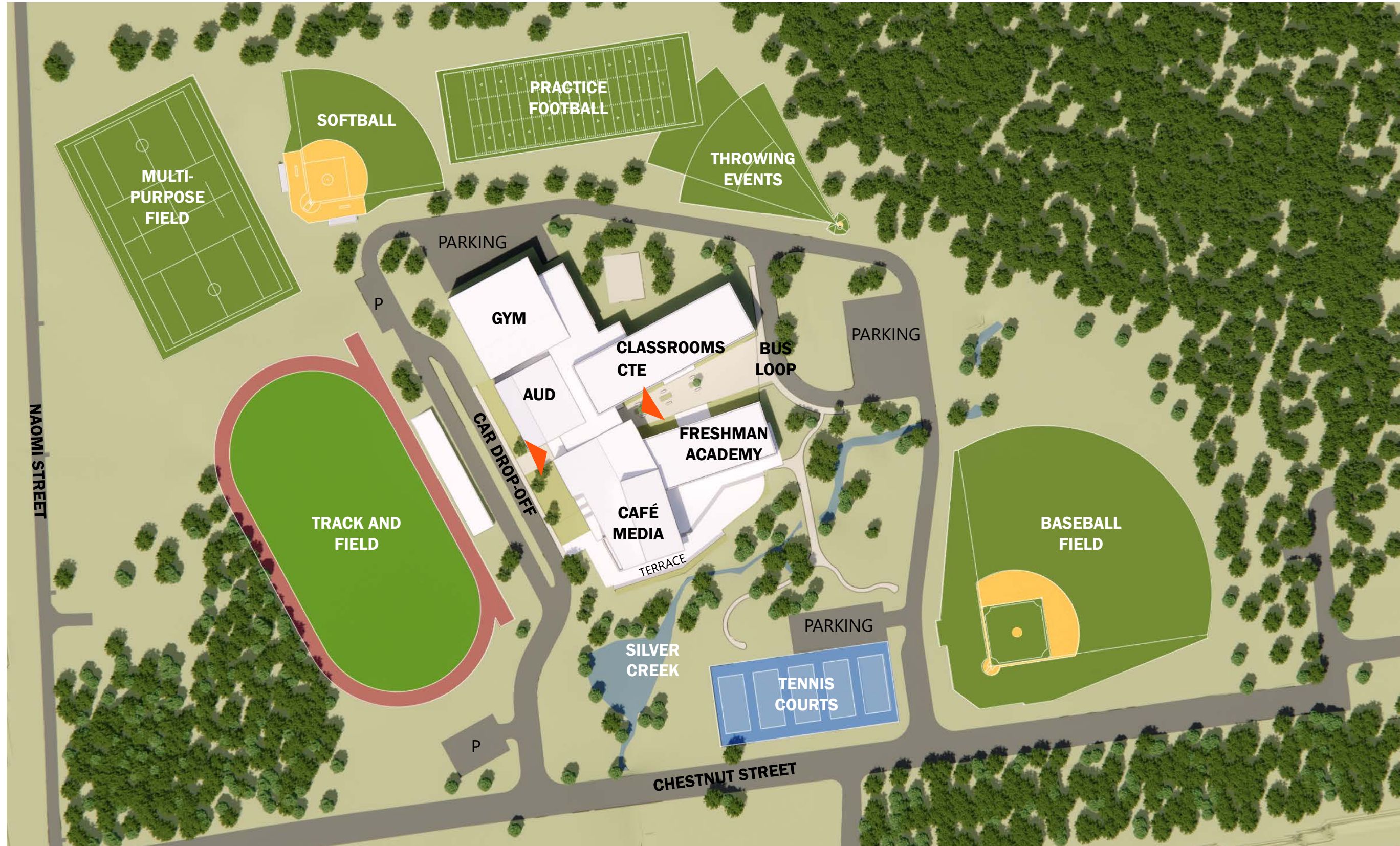


# Site Restraints



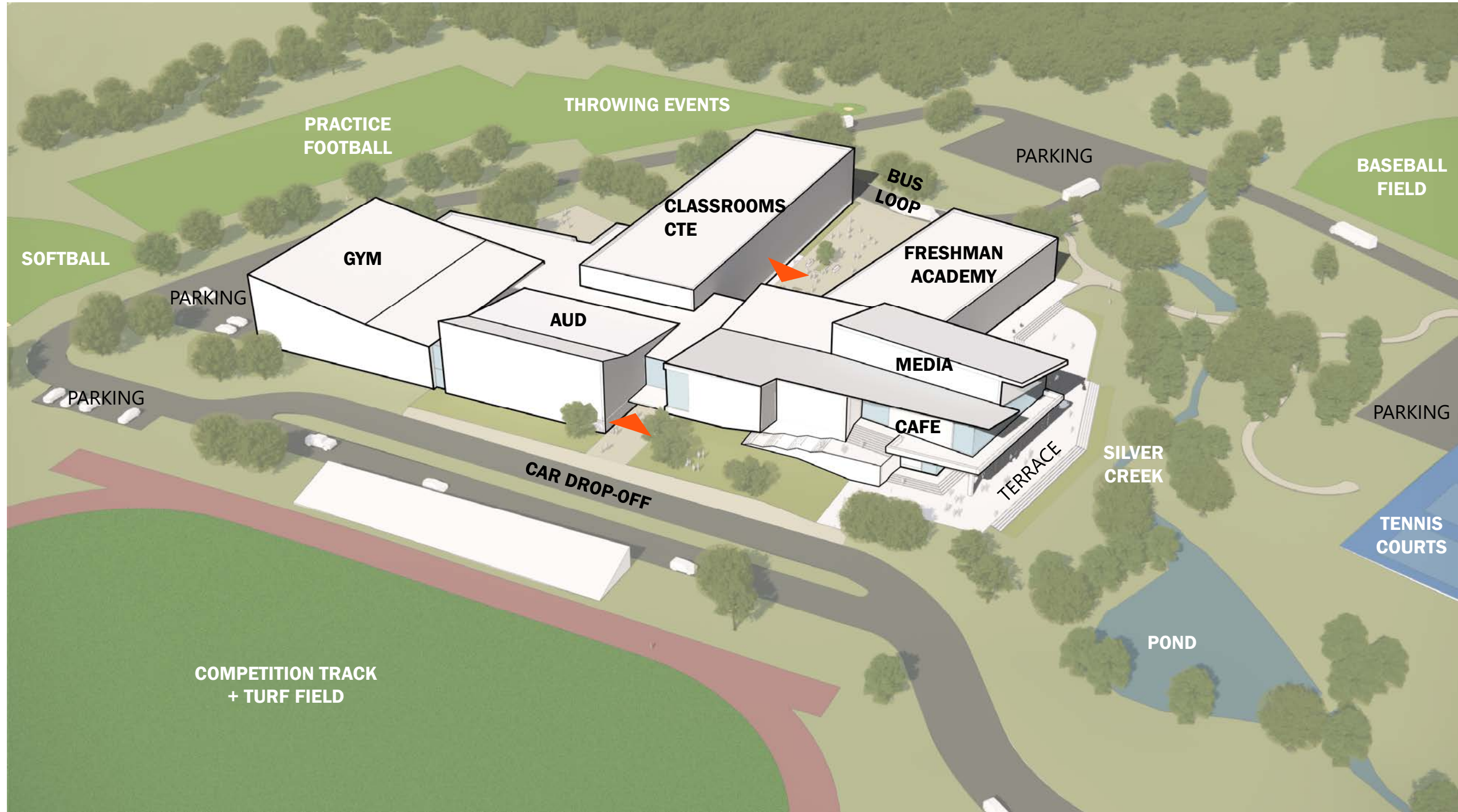
# Site Plan

MOUNT HOPE HS



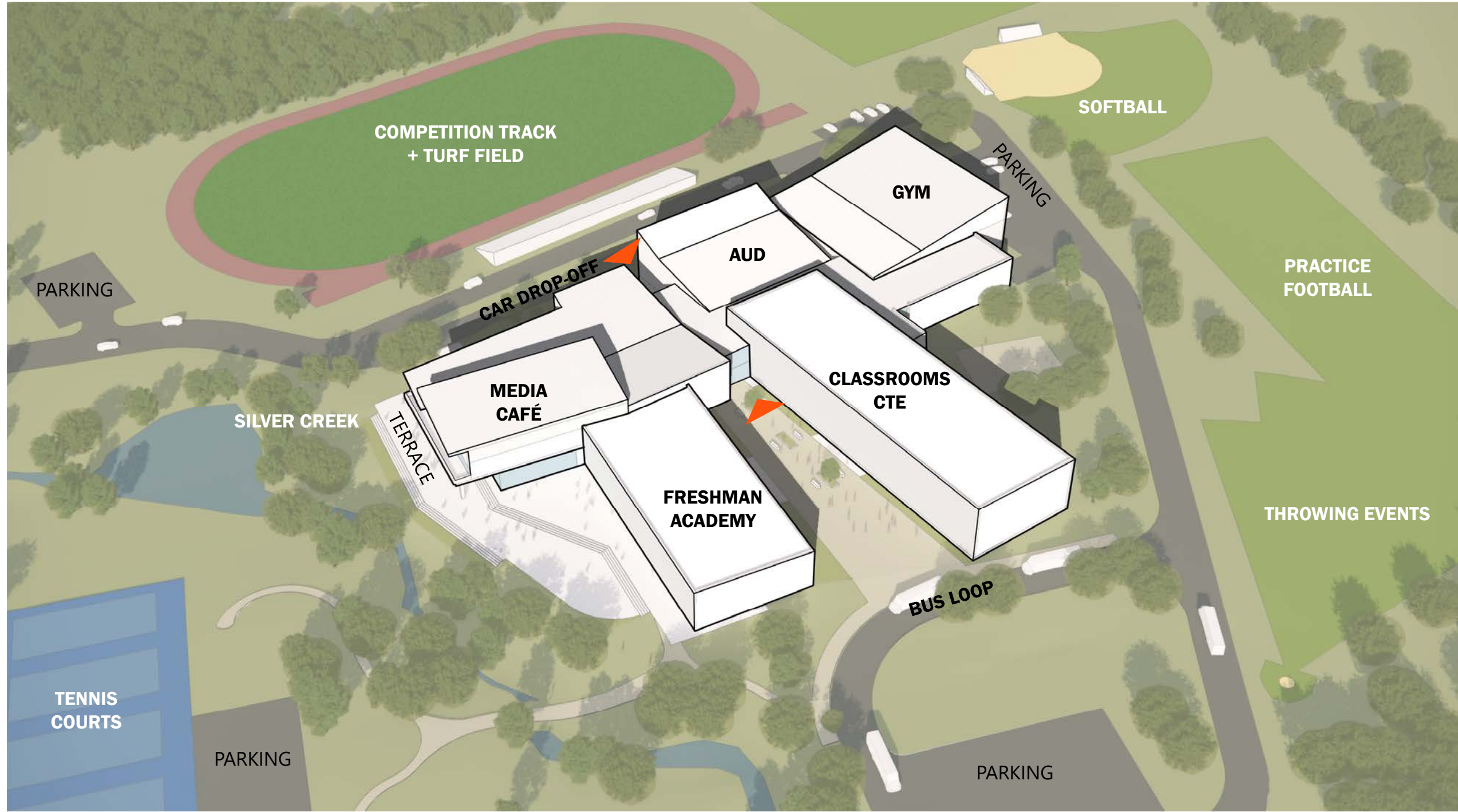
# Main Entry Aerial

VIEW FROM WEST | CAR DROP-OFF



# Courtyard Aerial

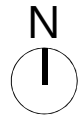
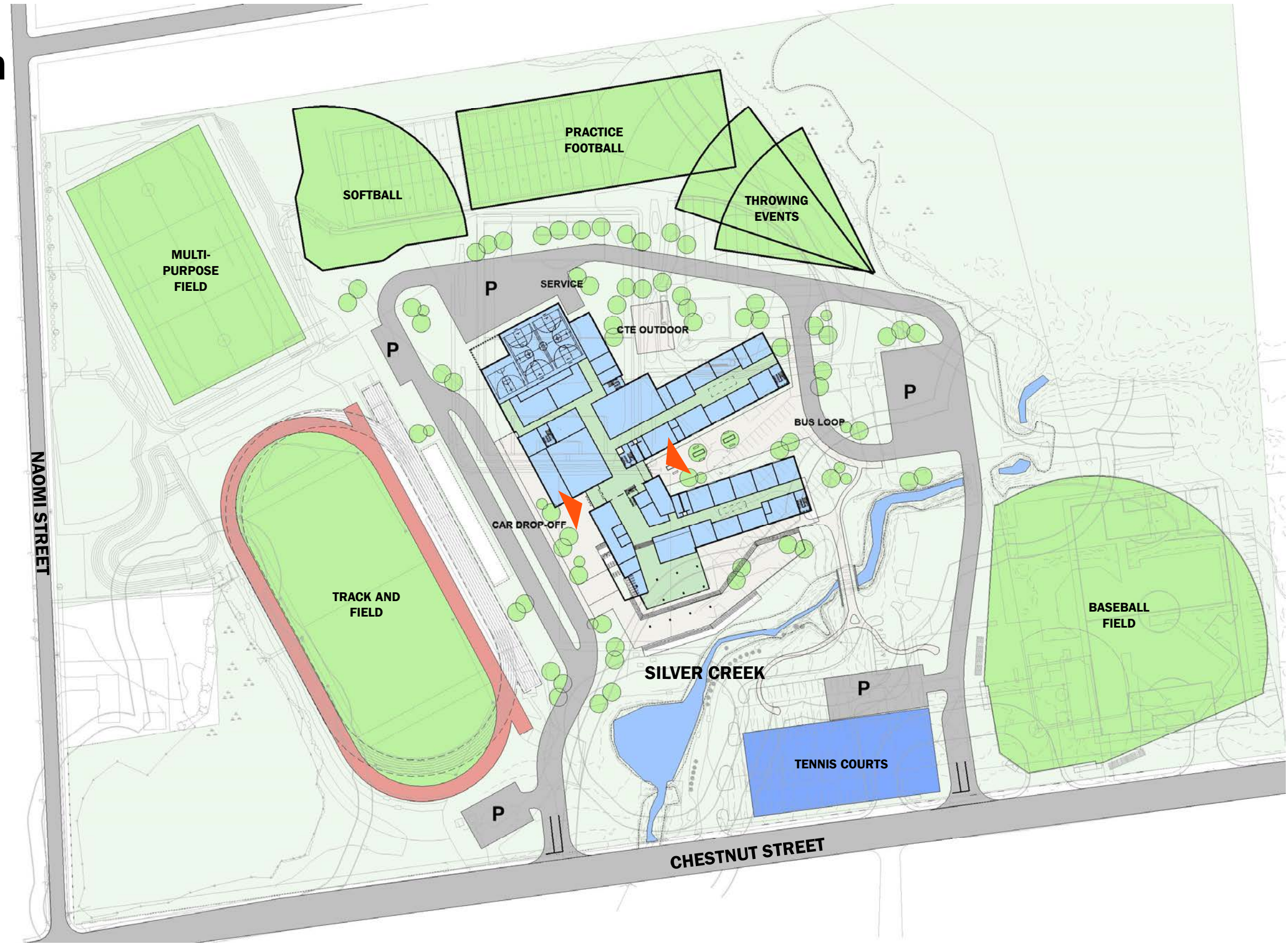
VIEW FROM EAST | BUS LOOP





# Site & First Floor Plan

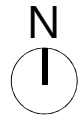
BLUEWAYS & GREENWAYS



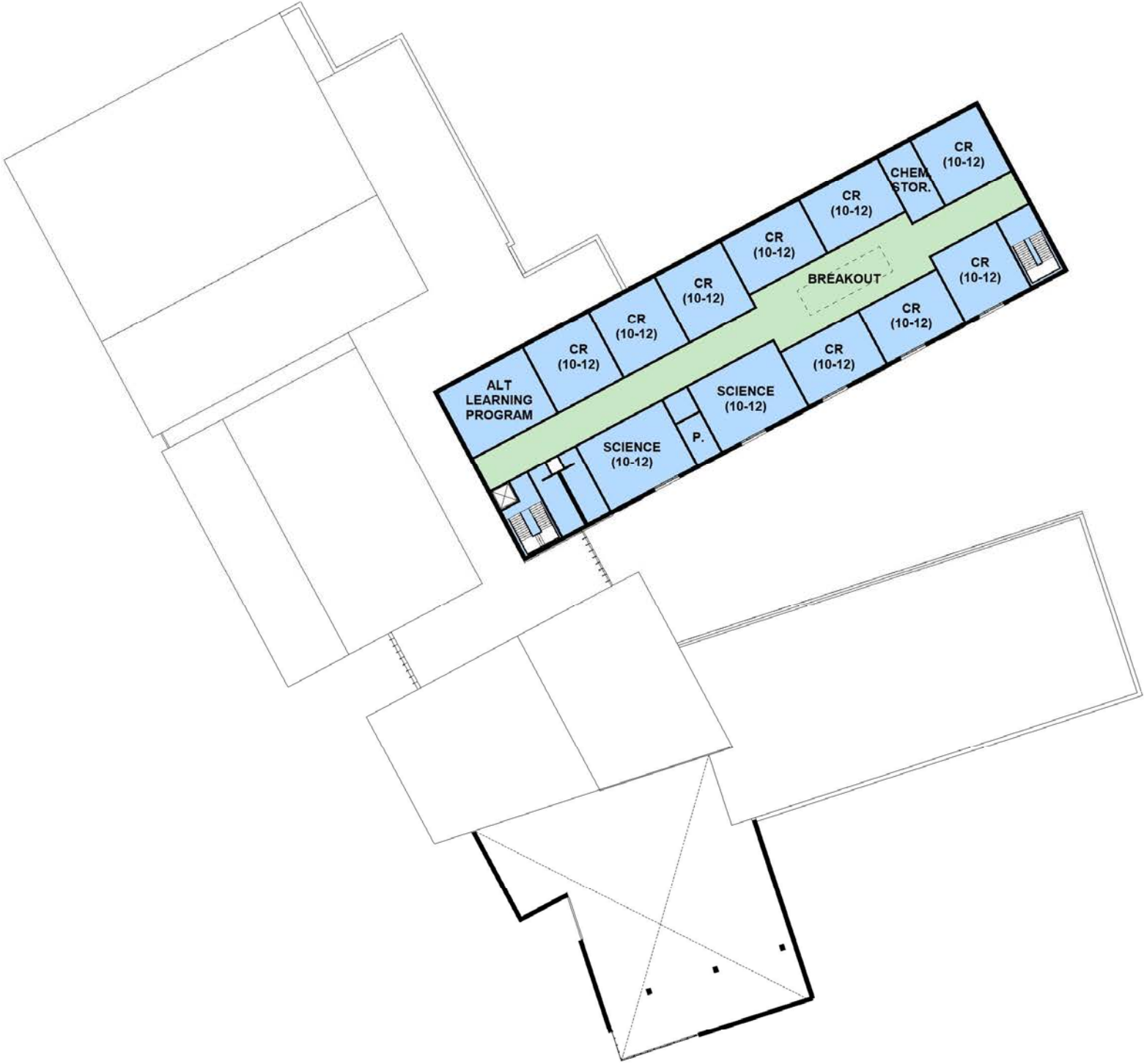
# First Floor Plan



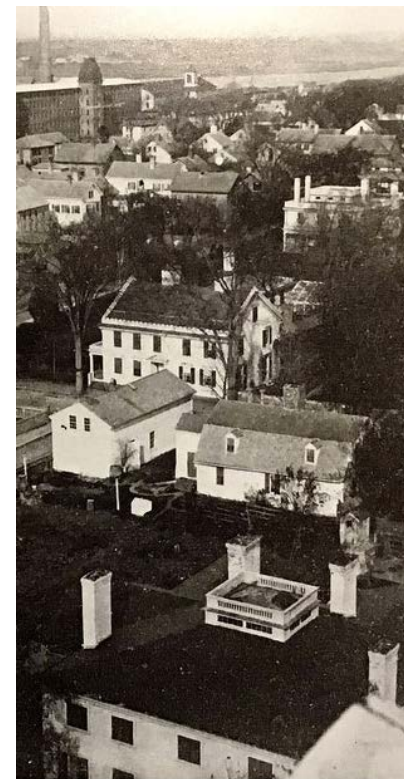
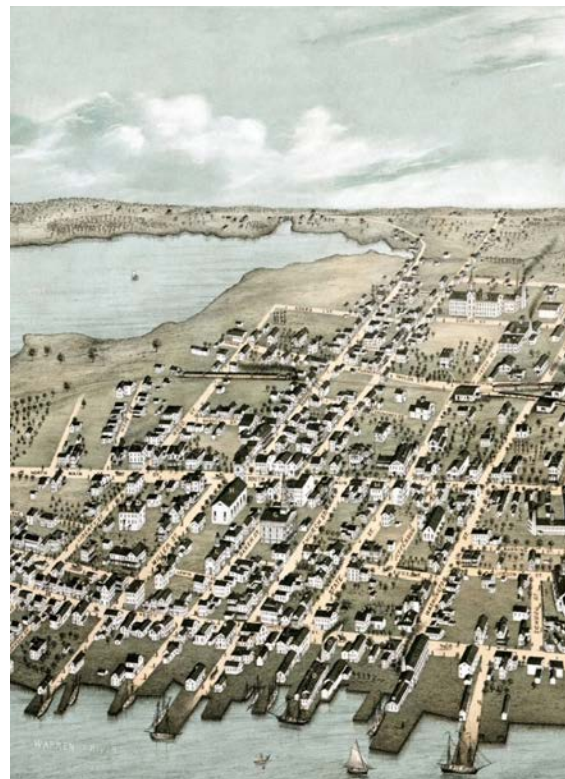
# Second Floor Plan



# Third Floor Plan



# Inspiration



# Student Commons | Café & Media

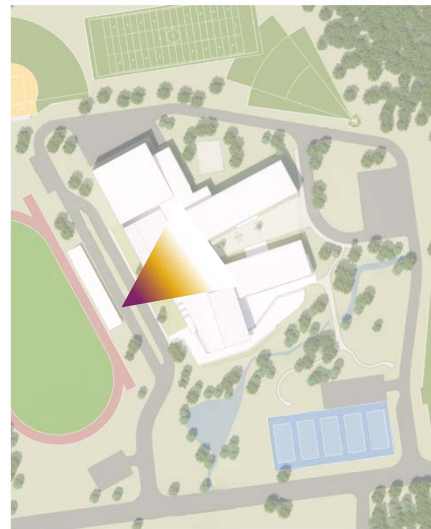
SILVER CREEK FACADE



# Main Entry

WEST FAÇADE

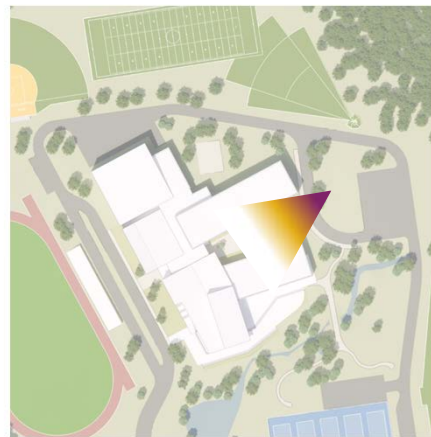
CAR DROP-OFF



# Courtyard Entry

EAST FAÇADE

BUS LOOP





# Bristol Warren Regional School District

---

**COLT ANDREWS ELEMENTARY SCHOOL**

**PERKINS —  
EASTMAN**

*Human by Design*

# Bristol-Warren Regional School District

Legend:

● 901-1800 Enrollment

● <900 Enrollment

XX Historic District

**Rockwell ES**  
 Grades PK – 5  
 25,609 SF  
 Poor Condition (31%-50%)

**Mt. Hope HS**  
 Grades 9 – 12  
 177,732 SF  
 Poor Condition (31%-50%)

**Guiteras ES**  
 Grades PK – 5  
 39,107 SF  
 Poor Condition (31%-50%)

**Colt - Andrews ES**  
 Grades 4 - 5    Grades K - 3  
 24,206 SF    31,817 SF  
 Average Condition (11%-30%)



## Kickemuit MS

Grades 6 – 8  
149,915 SF  
Poor Condition (31%-50%)

## Hugh Cole ES

Grades PK – 5  
84,536 SF  
Average Condition (11%-30%)



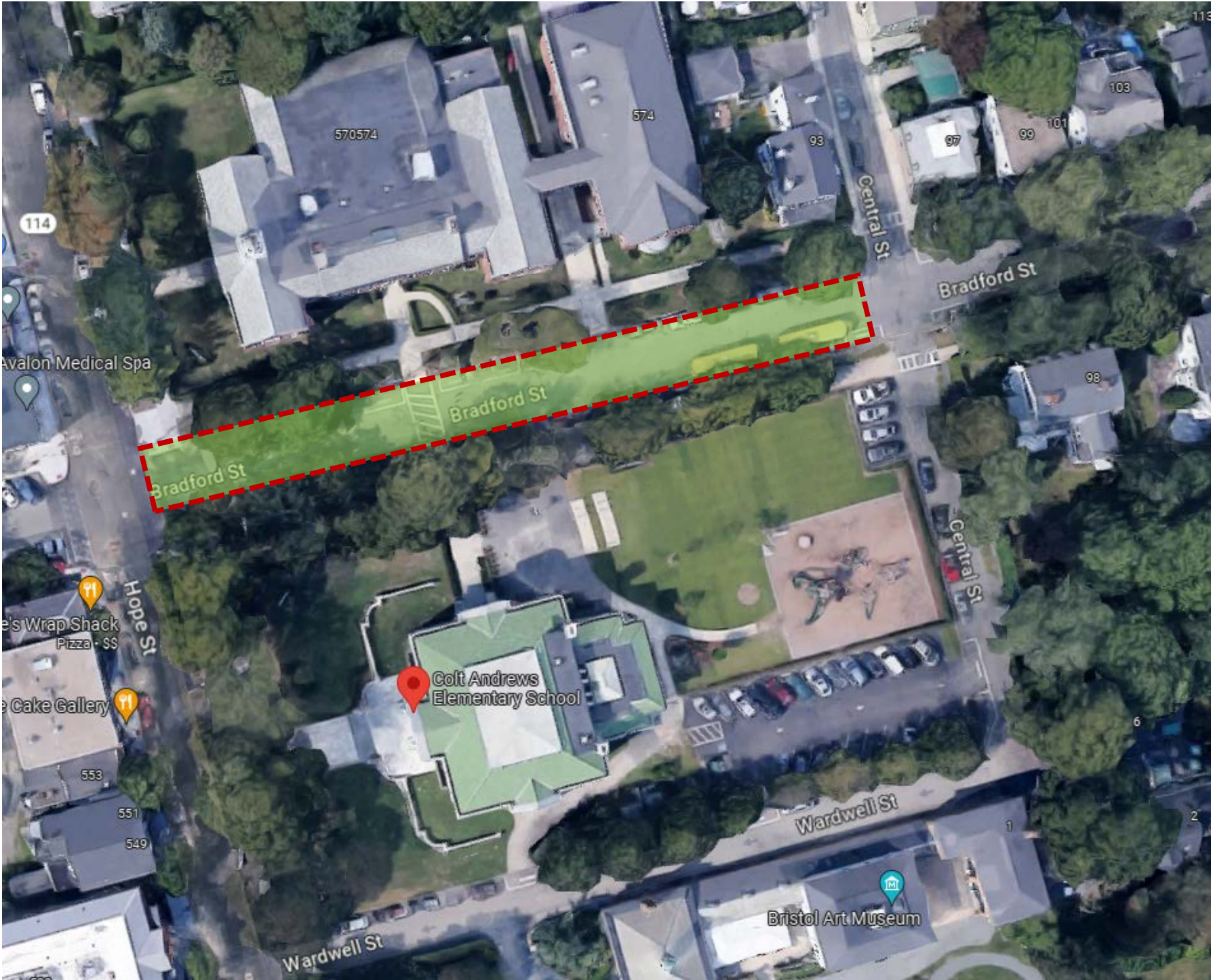
# Colt - Andrews

## Current Site Plan

- Schools share same facilities
- Schools split by Bradford St.
- Dropoff on street
- Limited outdoor learning space
- Difficult to secure
- Unsightly chain-link fences



# Colt – Andrews: Creating a Campus



# Colt School



# Andrews School



# Colt - Andrews







## Proposed Campus Plan:

- Increased site safety & security
- Fire Access between buildings
- Buses cue in access drive
- Pedestrian path/market area
- More outdoor learning space
- More play space
- Historic quality perimeter fence
- Preserve Hope St. appearance



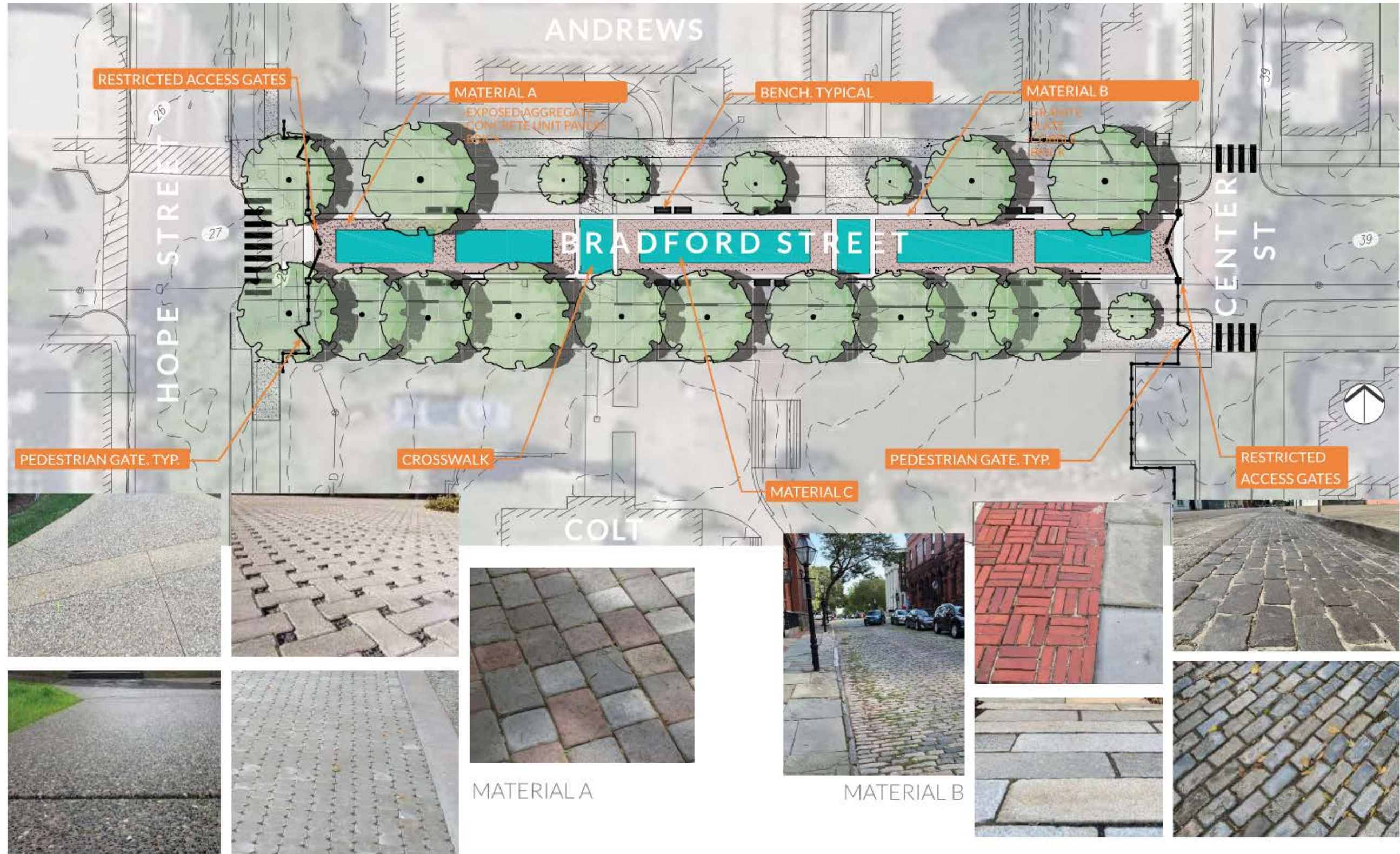
# Colt - Andrews



-  STREET TRAFFIC
-  PEDESTRIAN TRAFFIC
-  STUDENT MOVEMENT
-  HEDGES
-  CHAIN LINK FENCE
-  WROUGHT IRON FENCE



# Materials



**Bradford Street**  
Colt-Andrews School



# Materials



ACCENT PAVEMENTS



FENCE AND GATES



FURNISHINGS

**Bradford Street**  
Colt-Andrews School

**TRAVERSE**  
landscape architects