



TOWN COUNCIL WORK SESSION

Tuesday, January 16, 2024 at 7:00 PM

Council Chambers – Bristol Municipal Complex

AGENDA

This meeting will be held in the Bristol Municipal Complex is open for in-person participation.

The meeting is also livestreamed on YouTube on Town of Bristol Indiana channel.

Link to livestream is available on Town website.

1. **CALL MEETING TO ORDER**
2. **PLEDGE OF ALLEGIANCE**
3. **ROLL CALL**
4. **APPROVAL OF AGENDA**

REPORTS

5. **TOWN MANAGER**
 - a. [United Engineering presentation on pedestrian bridge](#)
6. **CLERK-TREASURER**
7. **TOWN ATTORNEY**
8. **QUESTIONS ABOUT UPCOMING COUNCIL MEETING AGENDA ITEMS**
9. **OTHER COMMENTS OR QUESTIONS**
 - a. Marshal Albin
 - Det Priem resignation
 - Officer Mosher update
10. **MOTION TO ADJOURN**

Bristol, Indiana
Tuesday January 16, 2024

Preliminary Design Meeting

Town of Bristol Pedestrian Bridge



Project Team

Town of Bristol

- **Mike Yoder, Town Manager**

United Consulting

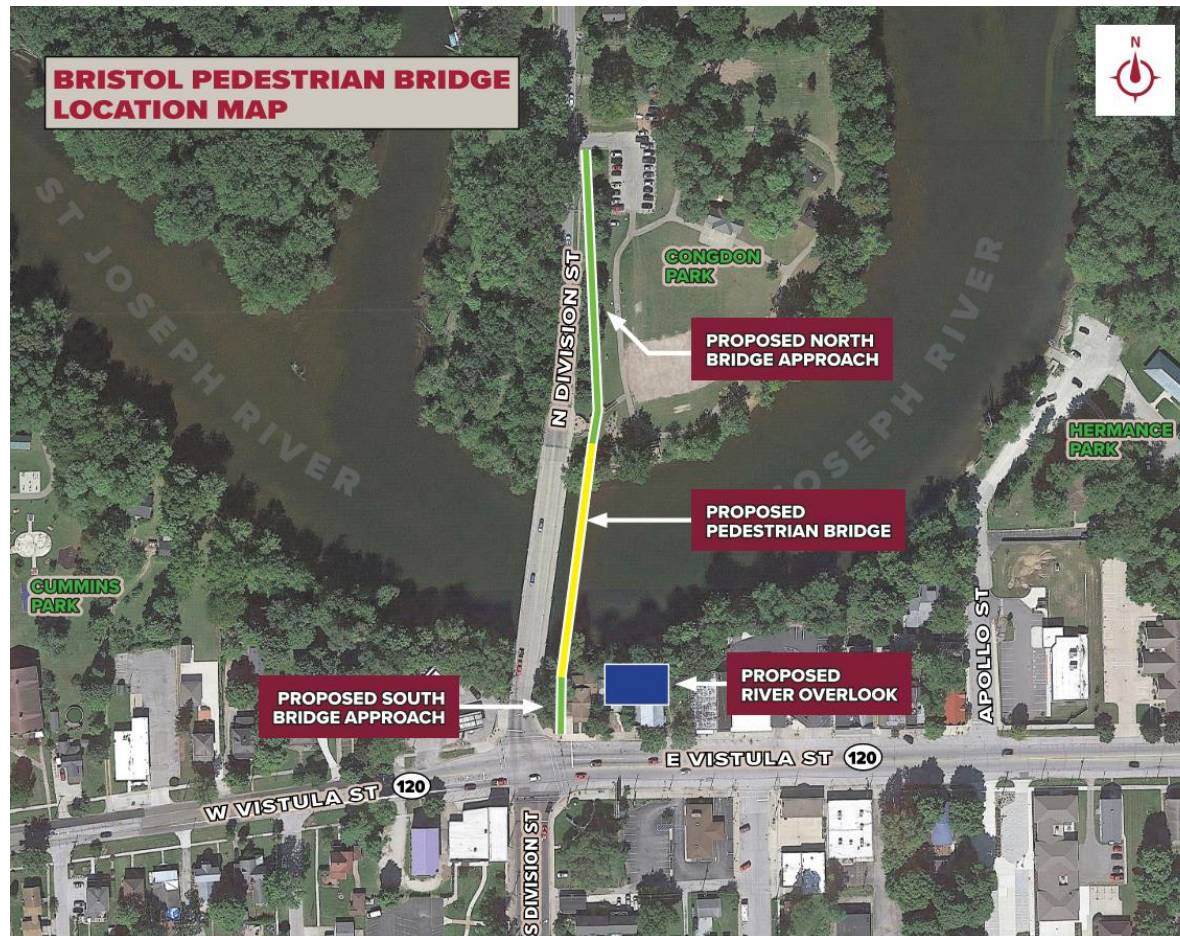
- **Brian Frederick, P.E., Project Team Leader**
- **Marcus Gahagen, E.I., Design Engineer**

Presentation Agenda

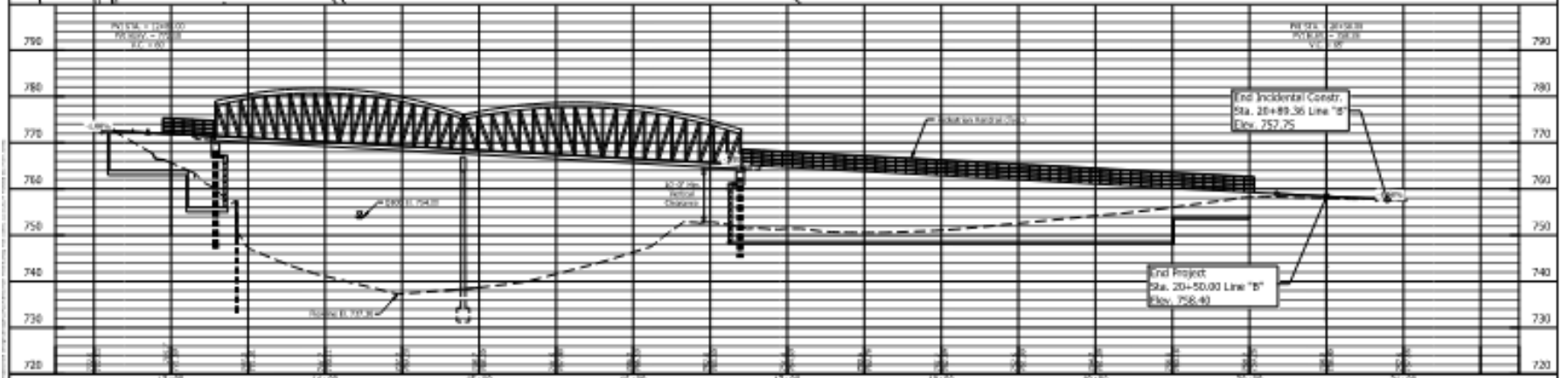
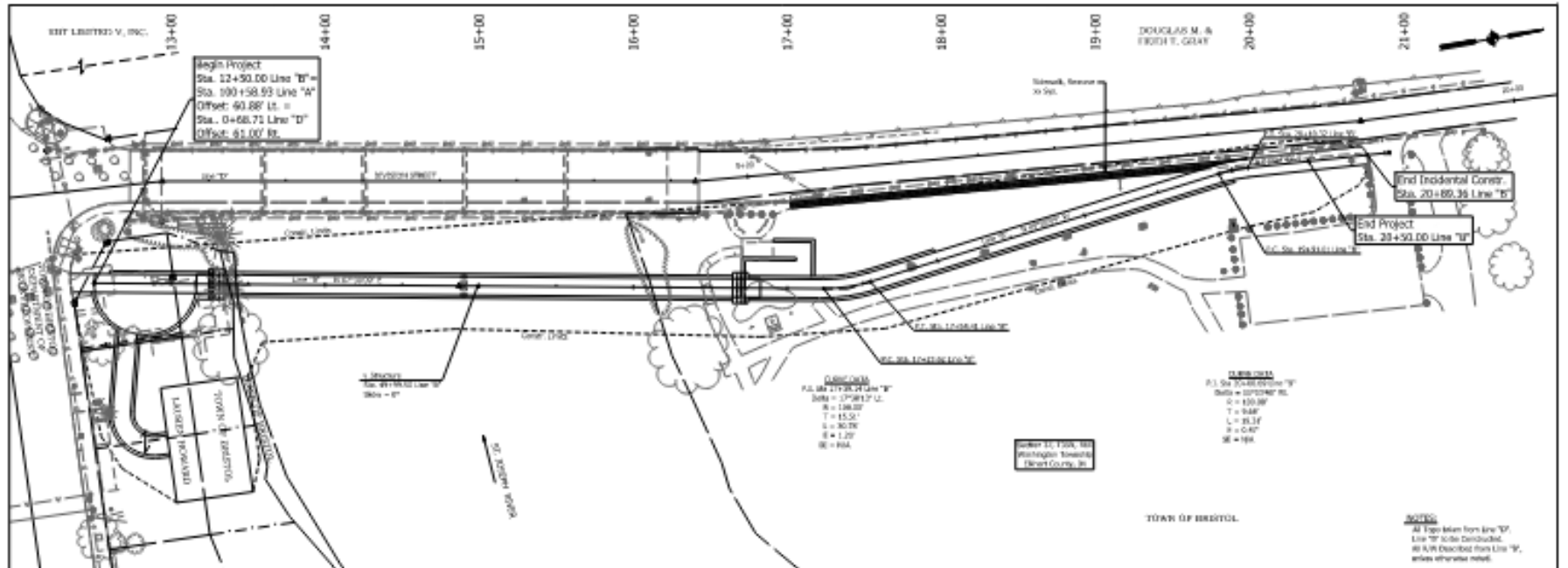
- **Project Purpose and Need**
- **Preliminary Alignment**
- **Design Criteria**
- **Utilities Impacts**
- **Permits and Environmental Impacts**
- **Right-of-Way Impacts**
- **Construction Cost Estimate**
- **Questions / Comments**

Project Purpose and Need

- The purpose of this project is to provide pedestrians with a safe crossing over the St. Joseph River connecting Downtown Bristol and Congdon Park.

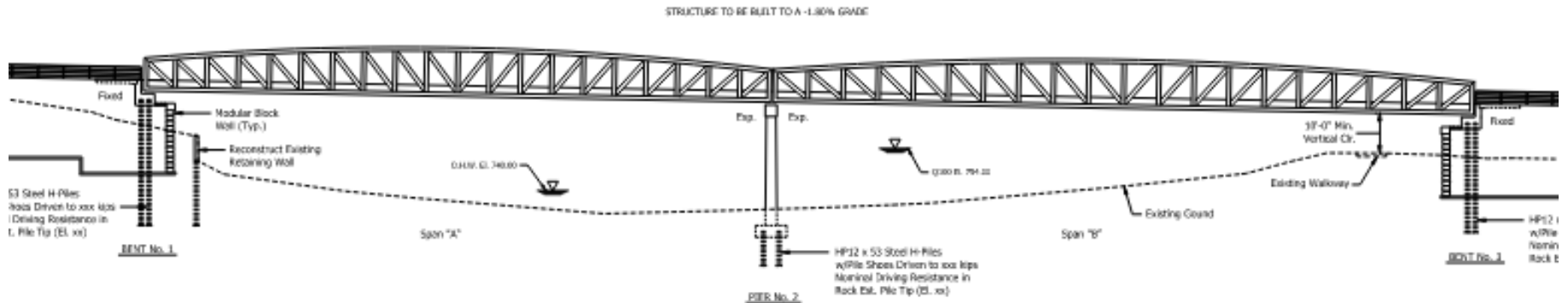


Preliminary Plan and Profile



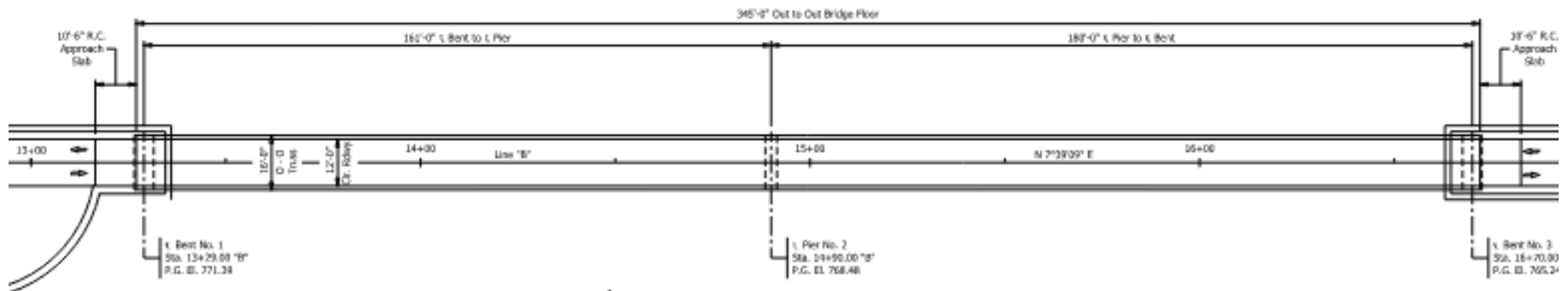
		8980 Allison Pointe Boulevard, Suite 200 Indianapolis, IN 46299 Phone 317-896-1505 www.unity.com		TOWN OF BRISTOL PLAN & PROFILE TOWN OF BRISTOL PEDESTRIAN BRIDGE		SHEET NO. 5 DATE: 11/11/11 DRAWN BY: [Name] CHECKED BY: [Name]	
--	--	---	--	--	--	---	--

Preliminary General Plan



ELEVATION

Scale: 1/16" = 1'-0"



PLAN

Scale: 1/16" = 1'-0"

Utilities Impacts

- Utilities are located within the project area.

- Town of Bristol (Water)
- Town of Bristol (Sewer)
- Elkhart Co. Fiber
- Commercial Broadband Solutions
- Frontier
- NIPSCO Electric
- NIPSCO Gas



- All utilities were sent Initial Notice Letters on September 20, 2023.
- Verifications of Facilities and Conflict Analysis are the next step in the design phase.

- **Anticipated Permits**
 - **Section 401 WQC and Section 404**
 - **Indiana Department of Natural Resources Construction in Floodway Permit**

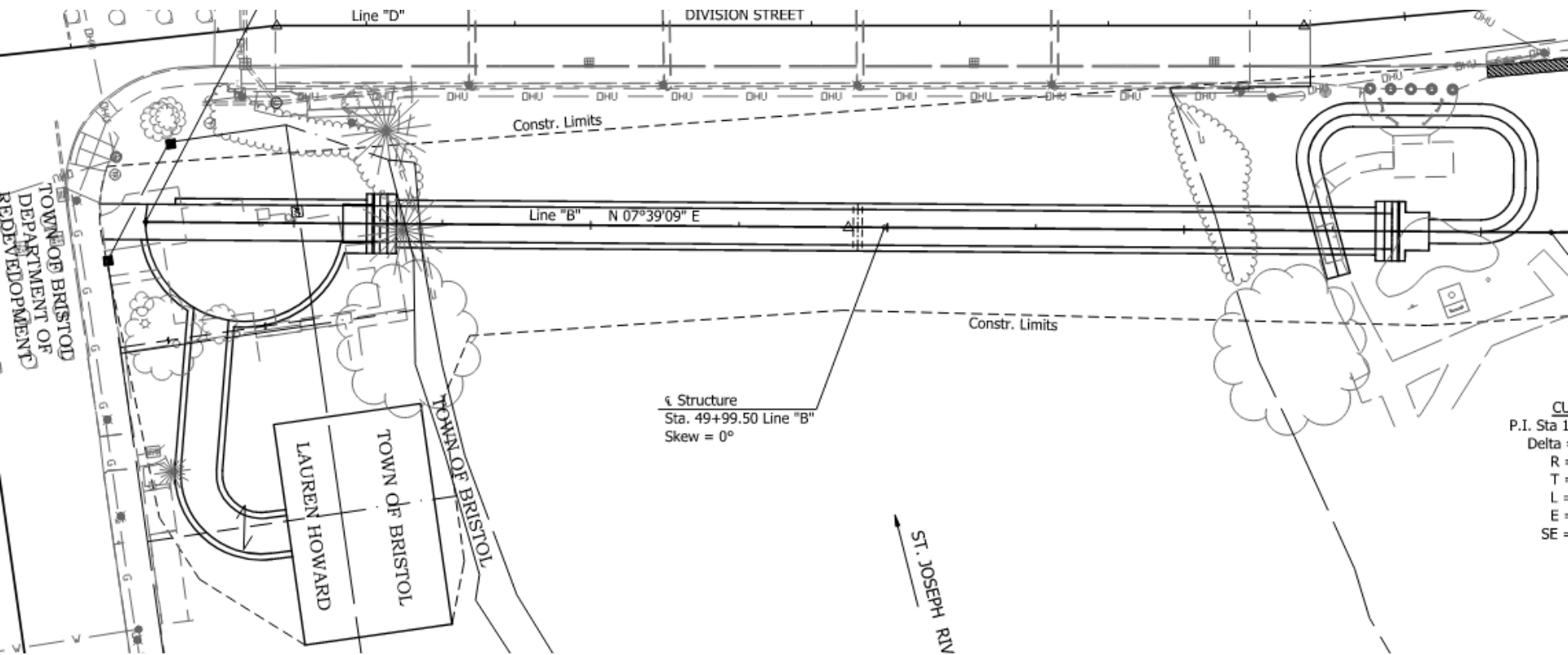
- **Environmental Impacts**
 - **Anticipated tree clearing along the bank for the entire length of the project.**

- **Right-of-Way Impacts**
 - **1 parcel is required to construct a retaining wall around the proposed landing area at the South approach to the bridge.**

Construction Cost

- Preliminary Design Construction Cost Estimate (2025 Construction)
 - **\$4,800,000**

North Approach Alternative



Questions?



Section 5, Item a.

—Consulting—

Preliminary Plans

Section 5, Item a.

Consulting

PROJECT	DESIGNATION
CONTRACT	BRIDGE FILE

STRUCTURE INFORMATION				
STRUCTURE	TYPE	SPAN AND SKEW	OVER	STATION
-	PEDESTRIAN STEEL TRUSS BRIDGE	TWO SPANS: 165'-0", 180'-0" SKEW 0"	ST. JOSEPH RIVER	14+99.50 Line "B"

DESIGN DATA	PEDESTRIAN BRIDGE
DESIGN SPEED	20 MPH
PROJECT DESIGN CRITERIA	RECYCLE PAVEMENT
FUNCTIONAL CLASSIFICATION	SHARED LEAD PATH
RURAL/URBAN	URBAN (INTERMEDIATE)
TERRAIN	LEVEL
ACCESS CONTROL	NONE

TOWN OF BRISTOL TOWN COUNCIL BRIDGE PLANS

FOR SPANS OVER 20 FEET
TOWN OF BRISTOL RIVERWALK
OVER
ST. JOSEPH RIVER



OFFICIALS OF THE
TOWN OF BRISTOL

DATE: _____

MIKE YODER, TOWN MANAGER

CATHY ANTONELLI, CLERK TREASURER

JILL SWARTZ, DEPUTY CLERK & ASSISTANT TOWN MANAGER

MIKE ALSB, TOWN MARSHAL

JEFF BEACHY, COUNCIL PRESIDENT

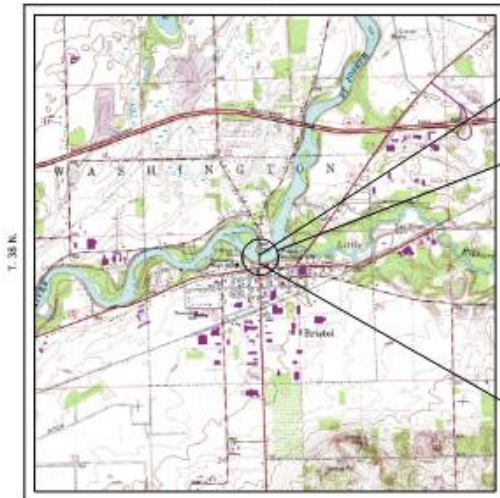
CATHY BURKE, COUNCIL MEMBER

ANDREW MEDFORD, COUNCIL MEMBER

GREGG TUHOLSKI, COUNCIL MEMBER

DOUG DeSMITH, COUNCIL MEMBER

Town of Bristol Pedestrian Bridge, Riverwalk over St. Joseph River. Located 0.57 Miles South of Indiana I-89/90 Toll Road in Section 27, of Township 38 North, Range 6 East, Washington Township, in Elkhart County Indiana.
R. 6 E.



LATITUDE: 41°43'19"	LONGITUDE: 85°49'02"
BRIDGE LENGTH :	0.065 MI.
ROADWAY LENGTH :	0.087 MI.
TOTAL LENGTH :	0.152 MI.

LOCATION MAP
ELKHART COUNTY

[INDIANA DEPARTMENT OF TRANSPORTATION STANDARD SPECIFICATIONS DATA TO BE USED WITH THESE PLANS]



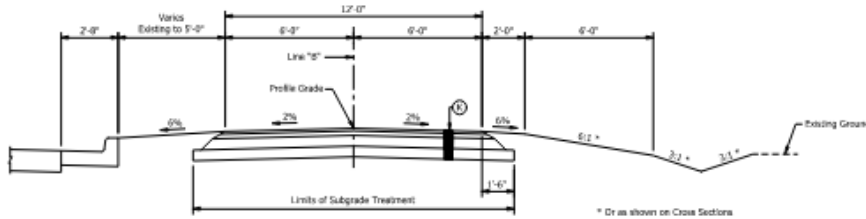
8440 Allison Pointe Boulevard, Suite 200
Indianapolis, IN 46250
Phone 317-895-2585

PLANS prepared by: **UNITED CONSULTING**

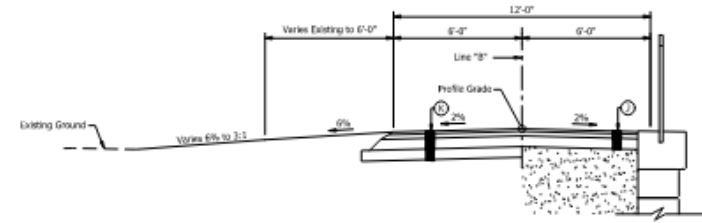
(317) 895-2585
PHONE REQUEST

FILE	
DESIGNATION	
SURVEY BOOK	SHEETS

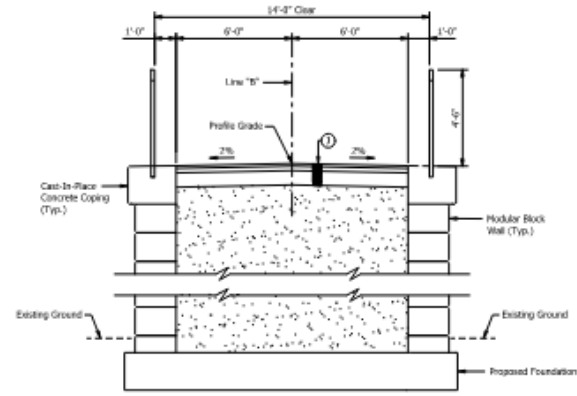
Preliminary Plans



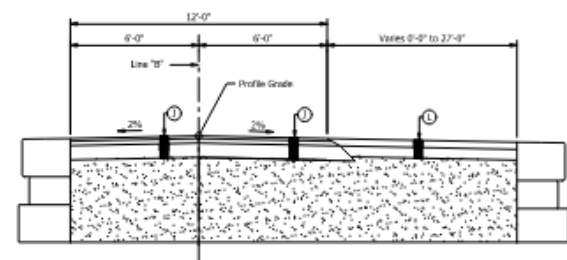
TYPICAL SECTION
Scale: 3/8" = 1'-0"
STA. 20+00.00 "B" TO 20+50.00 "B"



HALF WALL TYPICAL SECTION
Scale: 3/8" = 1'-0"
STA. 18+00.00 "B" TO 20+50.00 "B"



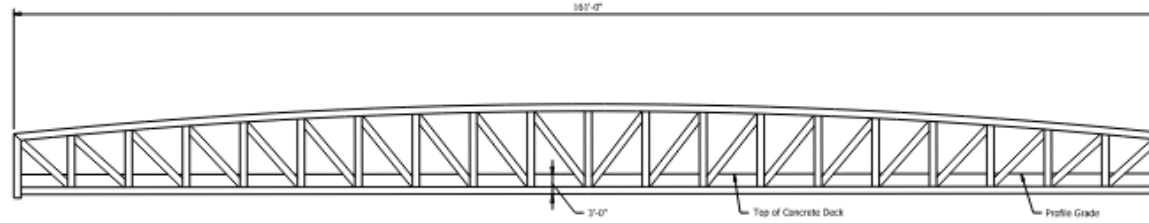
TYPICAL SECTION
Scale: 3/8" = 1'-0"
STA. 16+82.50 "B" TO 18+00.00 "B"



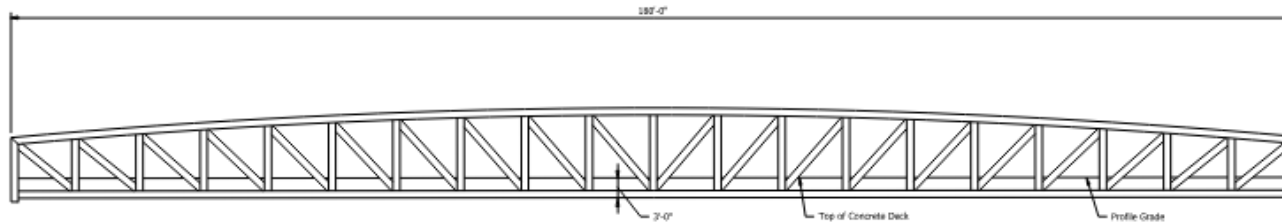
TYPICAL SECTION
Scale: 3/8" = 1'-0"
STA. 12+50.00 "B" TO 13+16.50 "B"

- LEGEND**
- ① HMA for Sidewalk Consisting of:
165 lbs/yds HMA, Type B, Surface 0.5 mm on
275 lbs/yds HMA, Type B, Intermediate, 19.0 mm on
6" Compacted Aggregate, No. 53
 - ② HMA for Sidewalk Consisting of:
165 lbs/yds HMA, Type B, Surface 0.5 mm on
275 lbs/yds HMA, Type B, Intermediate, 19.0 mm on
6" Subgrade Treatment, Type III
 - ③ HMA for Sidewalk Consisting of:
PCCP, 4" on
6" Compacted Aggregate, No. 53

Preliminary Plans



ARCH TRUSS ELEVATION - SPAN A
Scale: 1/8" = 1'-0"

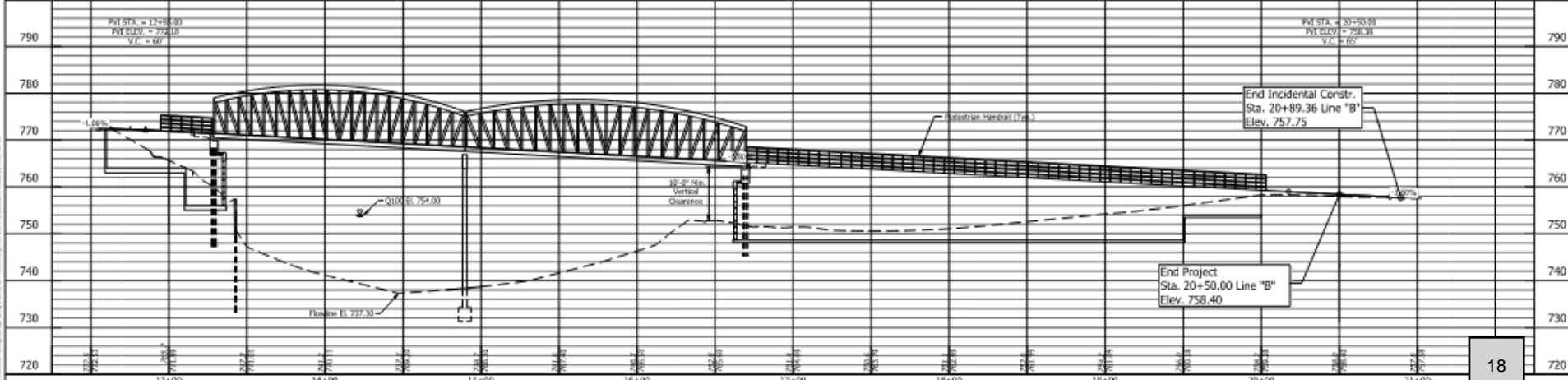
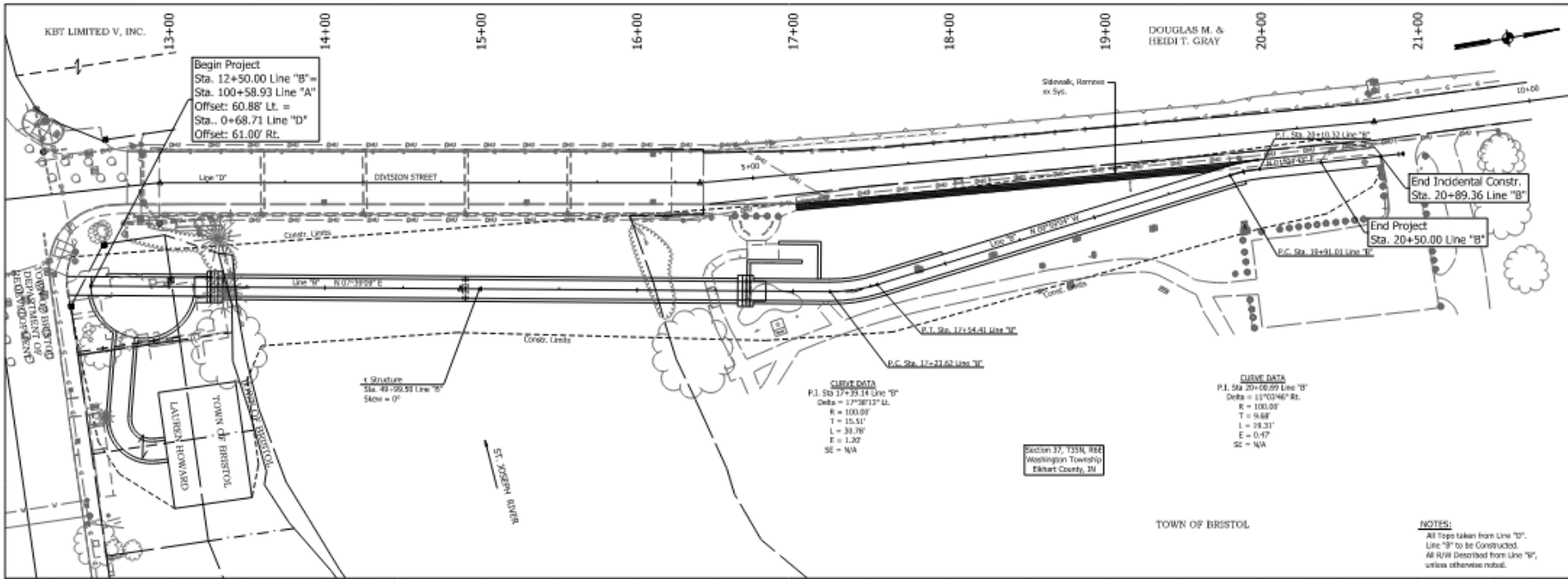


ARCH TRUSS ELEVATION - SPAN B
Scale: 1/8" = 1'-0"

Preliminary Plans

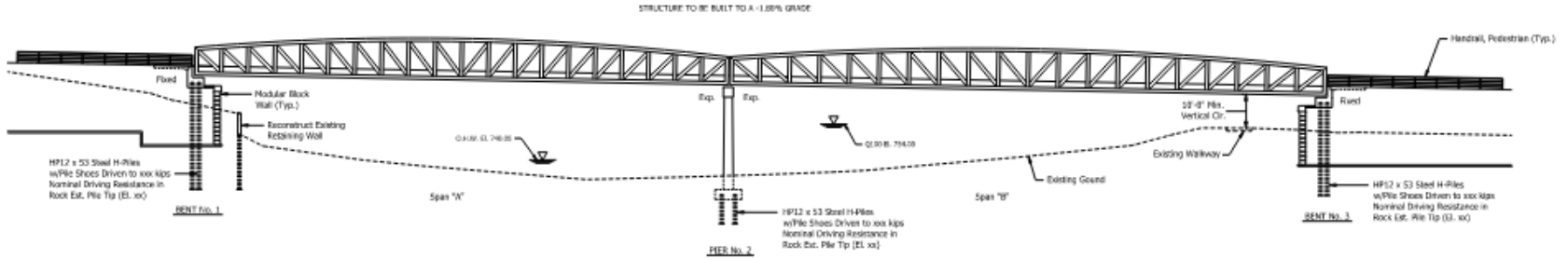
Section 5, Item a.

Consulting

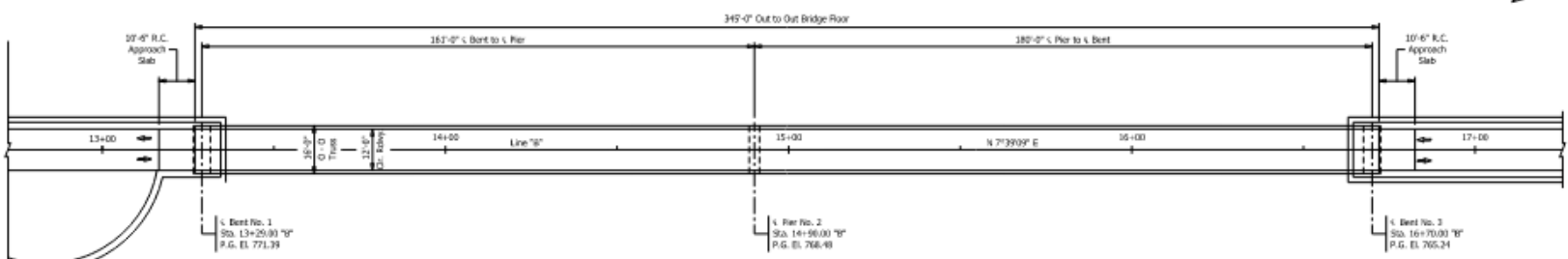


	UNITED 8440 Allison Pointe Boulevard, Suite 200 Indianapolis, IN 46250 Phone 317-895-2585	RECOMMENDED FOR APPROVAL _____ DESIGN ENGINEER _____ DATE _____	HORIZONTAL SCALE 1" = 30' VERTICAL SCALE 1" = 10' SURVEY BOOK SHEETS
		TOWN OF BRISTOL BRIAN S. BROETJE	SHEET FILE DESIGNATION SHEETS

Preliminary Plans



ELEVATION
Scale: 1/32" = 1'-0"



PLAN
Scale: 1/32" = 1'-0"

PEDESTRIAN STEEL TRUSS BRIDGE
2 SPANS: 161'-0", 180'-0"
SKEW: 0°
CLEAR ROADWAY: 12'-0"
BRISTOL RIVERWALK OVER ST. JOSEPH RIVER
BRISTOL, INDIANA



8440 Allison Pointe Boulevard, Suite 200
Indianapolis, IN 46250
Phone: 317-895-2585
www.ucindy.com

RECOMMENDED FOR APPROVAL	DESIGN ENGINEER	DATE
DESIGNED	NAME	DRAWN
		DSJ

TOWN OF BRISTOL
GENERAL PLAN

HORIZONTAL SCALE	AS NOTED	SHEET
VERTICAL SCALE	AS NOTED	DESIGNATION
DRAWN BY	DATE	SHEET
6	11	11

Preliminary Plans

GENERAL NOTES

Reinforcing steel covering shall be 2 U2" in top and 1" min. in bottom of floor slabs and 2" in all other parts unless noted.
Surface seal all concrete finished surfaces
(Estimated Qty. = 13,900 sq. ft.)

SUPERSTRUCTURE DESIGN DATA

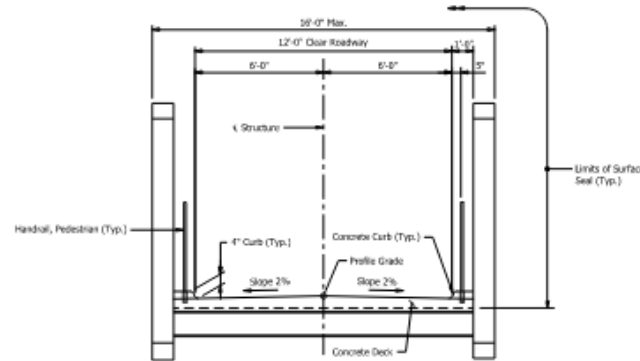
To be Designed for HS20-44 Loading & Pedestrian Loadings in accordance with AASHTO LRFD Bridge Design Specification, Seventh Edition and it's subsequent Interims.
To be Designed for Actual Dead Load, 35 psf for Future Wearing Surface, and 15 psf for Stay in Place Deck Forms.

SUBSTRUCTURE DESIGN DATA

Designed for HS20-44 Loading & Pedestrian Loadings in accordance with AASHTO LRFD Bridge Design Specification, Seventh Edition and it's subsequent Interims.
Designed for Actual Dead Load, 35 psf for Future Wearing Surface, and 15 psf for Stay in Place Deck Forms.

ULTIMATE DESIGN STRESSES

Class "A" Concrete $f_c = 3,000$ p.s.i.
Class "B" Concrete $f_c = 3,000$ p.s.i.
Class "C" Concrete $f_c = 4,000$ p.s.i.
Reinforcing Steel (Grade 60) $f_y = 60,000$ p.s.i.
Structural Steel $f_y = 50,000$ p.s.i.



TYPICAL BRIDGE SECTION

Scale: 3/8" = 1'-0"

PEDESTRIAN STEEL TRUSS BRIDGE
2 SPANS: 161'-0", 180'-0"
SKEW: 0°
CLEAR ROADWAY: 12'-0"
BRISTOL RIVERWALK OVER ST. JOSEPH RIVER
BRISTOL, INDIANA



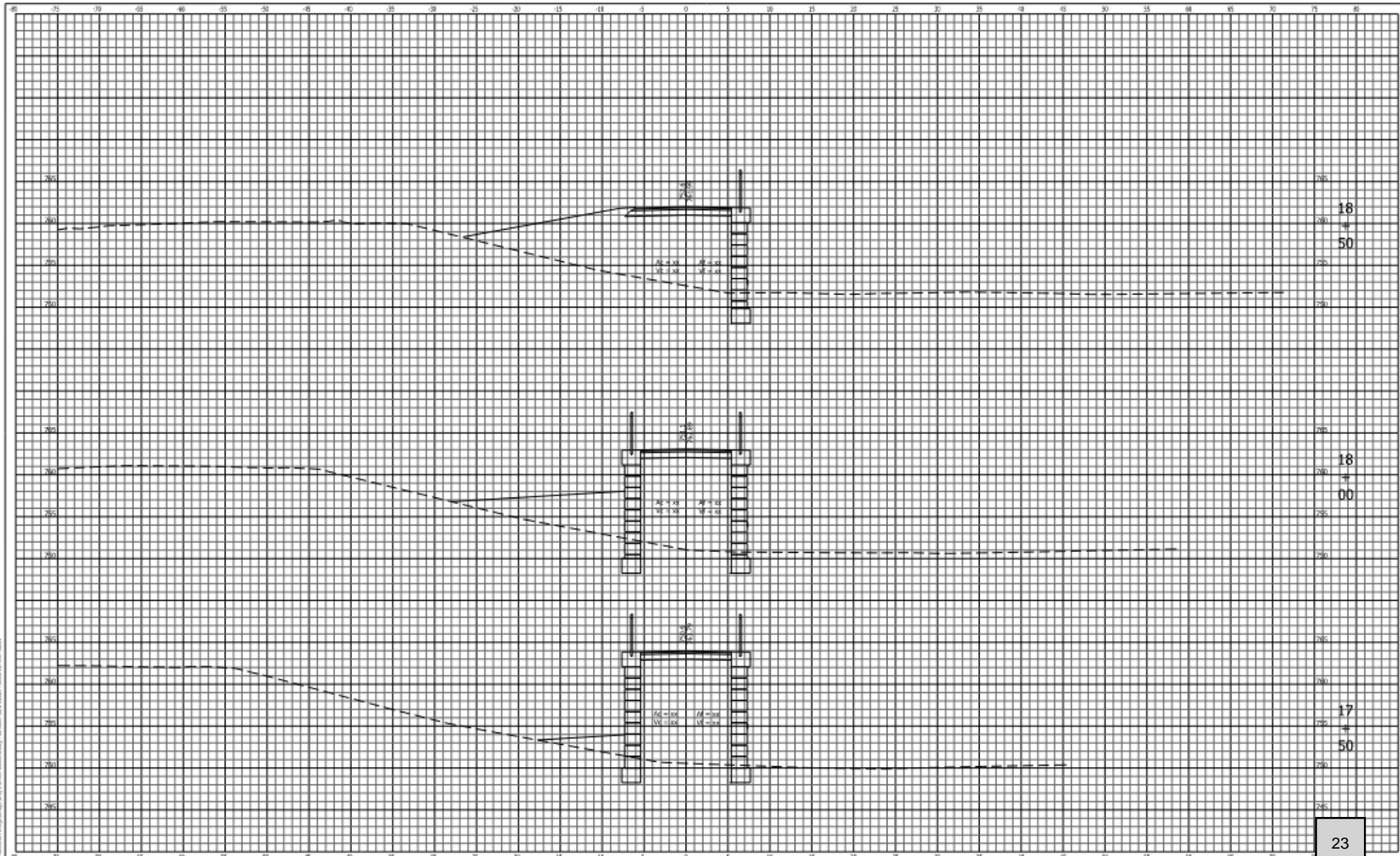
8440 Allison Pointe Boulevard, Suite 200
Indianapolis, IN 46250
Phone: 317-895-2585
www.ucinindy.com

RECOMMENDED FOR APPROVAL	DESIGN ENGINEER	DATE
DESIGNED (INAG)	DRAWN (BS)	

TOWN OF BRISTOL
GENERAL PLAN
TOWN OF BRISTOL PEDESTRIAN BRIDGE

HORIZONTAL SCALE	AS NOTED	FILE
VERTICAL SCALE	AS NOTED	DESCRIPTION
SURVEY BOOK	7	SHEETS
CONTRACT	12	PROJECT

Preliminary Plans



Thank You!

Section 5, Item a.

