



CITY of BRISBANE

Open Space and Ecology Committee Meeting Agenda

Wednesday, August 23, 2023 at 6:30 P.M. • Hybrid Meeting 50 Park Place, Brisbane, CA

Chair Becker will participate by Teleconference at the AC Hotel by Marriott at 300 Davis St, Santa Rosa, CA 95401.

The public may observe/participate in Committee meetings using remote public comment options or attending in person. Committee members shall attend in person unless remote participation is permitted by law. The Committee may take action on any item listed in the agenda.

TO ADDRESS THE COMMITTEE

IN PERSON

Location: 50 Park Place, Brisbane, CA 94005, Community Meeting Room

Masking is not required but according to the California Department of Public Health guidelines, people at higher risk for severe illness should consider masking. To help maintain public health and safety, we respectfully request that people not attend in-person if they are experiencing symptoms associated with COVID-19 or are otherwise ill and likely contagious (e.g., respiratory illnesses).

REMOTE PARTICIPATION

Members of the public may observe/participate in the Committee Meeting by logging into the Zoom Webinar listed below. Committee Meetings can also be viewed live and/or on-demand via the City's YouTube Channel, www.youtube.com/brisbaneca, or on Comcast Channel 27. Archived videos can be replayed on the City's website, <http://brisbaneca.org/meetings>. Please be advised that if there are technological difficulties, the meeting will nevertheless continue. The agenda materials may be viewed online at www.brisbaneca.org at least 24 hours prior to a Special Meeting, and at least 72 hours prior to a Regular Meeting.

Remote Public Comments:

Remote meeting participants may address the Committee. We also encourage you to submit public comments in writing in advance of the meeting. Aside from commenting while in the Zoom Webinar, the following email will be also monitored during the meeting and public comments received will be noted for the record during Oral Communications or during an agenda item.

Email: aetherton@brisbaneca.org

Join Zoom Meeting: www.brisbaneca.org/osec-zoom

Meeting ID: 976 4295 0160

Call In Number: 669.900.9128

Note: Callers dial *9 to "raise hand" and dial *6 to mute/unmute.

SPECIAL ASSISTANCE

If you need special assistance to participate in this meeting, please contact Adrienne Etherton at aetherton@brisbaneca.org or (415) 508-2118. Notification in advance of the meeting will enable the City to make reasonable arrangements to ensure accessibility to this meeting.

CALL TO ORDER

ROLL CALL

- A. Consider any request of a committee member to attend the meeting remotely under the “Emergency Circumstances” of AB 2449

ADOPTION OF THE AGENDA

ANNOUNCEMENTS

ORAL COMMUNICATIONS

APPROVAL OF THE MINUTES

- B. Minutes of July 26, 2023

NEW BUSINESS

- C. Response to Little Hoover Commission’s report on SB 1383
- D. Building Efficiency Program annual presentation
- E. Discuss goats to address gorse at west end of Crocker Trail

STAFF UPDATES

SUBCOMMITTEE REPORTS

CALENDAR ITEMS

CHAIR AND COMMITTEE MEMBER MATTERS

NEXT MEETING: September 27, 2023

ADJOURNMENT

B.

File Attachments for Item:

B. Minutes of July 26, 2023



CITY of BRISBANE

Open Space and Ecology Committee Meeting Minutes

Wednesday, July 26, 2023 at 6:30 P.M. • Hybrid Meeting 50 Park Place, Brisbane, CA

CALL TO ORDER – 6:39 PM

ROLL CALL

- A. Consider any request of a committee member to attend the meeting remotely under the “Emergency Circumstances” of AB 2449 – Etherton reported that Salmon requested to join remotely under the just cause provisions; the remaining committee members approved.

Committee members present: Becker, Calmes, Ebel, Fieldman, Nunan, Rogers, Salmon (remote)

Staff members present: Sustainability Manager, Etherton; Deputy Director of Public Works, Kinser; Sustainability Intern, Brogley (remote)

ADOPTION OF THE AGENDA

Nunan moved to adopt the agenda and Becker seconded; the motion was adopted unanimously.

ANNOUNCEMENTS

- Etherton noted that Sustainability Intern Brogley was joining remotely, and Gianna briefly introduced herself
- Fieldman reported that SB252 Fossil Fuel Divestment bill, which was supported by OSEC and the City Council, passed the state Senate but was held up in the Assembly; she believes there will be a hearing in fall. Strong support in recent LA Times editorials.

ORAL COMMUNICATIONS – none

APPROVAL OF THE MINUTES

- B. Minutes of May 24, 2023 – Nunan moved to approve the minutes and Ebel seconded; the motion was adopted with all in favor except Fieldman who abstained since she was absent.

OLD BUSINESS

- C. Quarry Development update – Etherton reported that the deficiencies in the developer’s application were not sufficient enough to impact the project definition for the Environmental Impact Report (EIR) and therefore a new Notice of Preparation was not expected. She did not have further information on the deficiencies but was told that the EIR was expected late this year, likely before the Baylands EIR or in any case they would not be out simultaneously.

NEW BUSINESS

- D. Election of Chair and Vice Chair
- a. Salmon nominated and Ebel seconded Becker for Chair; Chair Calmes held a roll call vote which was unanimous in support

- b. Rogers nominated and Ebel seconded Nunan for Vice Chair; Chair Calmes held a roll call vote which was unanimous in support

E. Day in the Park booth

- a. Rogers reported on the Event subcommittee's plans for pest deterrents out of old CDs; Ebel noted that they delaminate quickly in the elements and encouraged consideration of gluing two of them together or applying coating to keep them together longer.
- b. Fieldman suggested a heat pump promotion of some sort; after discussion agreed that Peninsula Clean Energy having a table to promote their programs and rebates would be ideal and Etherton will reach out to see if they will host a table next to us
- c. Fieldman also suggested revisiting the carbon footprint piñata.
- d. Ebel and Becker described some dark skies outreach ideas, including having a link or QR code for a community survey there. Etherton shared an idea for community members to share their favorite dark skies memories on post-its on an easel or paper hung on the back wall of the tent. Becker noted the Dark Skies subcommittee had suggested moving the display to the library after Day in the Park to extend the impact.

F. Tree inventory project and outreach

- a. Etherton shared proposals from PlanITGeo for a Public Tree Inventory and TreePlotter and Canopy software licenses and noted the budget included \$40,000 for these items. The group discussed the pros and cons of the various options.
- b. Limit the scope of the tree inventory to trees over a certain size or not including the Brisbane Acres if we are going to go over the 5000 tree limit (and thus over budget)
- c. Include Canopy software for one year; try to see if they can use 2023 data or if we can negotiate the price down if not
- d. Calmes moved to utilize the full budget for the tree inventory including risk assessment and one year of Canopy software; Ebel seconded, and all voted in favor

STAFF UPDATES

Etherton:

- Chamber CEO Davis asked about volunteer ideas for a local company give-back day
 - Ebel noted she had created a list in the past that she would try to find and send to Etherton
 - Rescue trees on Quarry Road from ivy, or remove ivy from Firth or Costaños Canyons (questions about stability of Firth)
 - Pulling broom along Crocker Trail. The group also noted gorse on the back of the horseshoe though that is not a good volunteer activity. Fieldman asked to agendize goats for an upcoming meeting.
- Fieldman notes hearing of a recommendation to suspend SB1383 by the Little Hoover Commission and suggested the committee or city send a letter discouraging such; she will send the article to Etherton.

Kinser: Shared that she and Bob Sage escorted Wildlife Conservation Board staff on an audit of the Brisbane Acres their grant funds had helped the City purchase.

Brogley: Reported 74% compliance with the annual benchmarking requirements and citations sent out this week to noncompliant; many buildings coming into compliance with Beyond requirements as well and notices of violation for those that aren't will also go out soon.

SUBCOMMITTEE REPORTS

- Events (Rogers, Salmon, Nunan) – previously covered
- Education and Outreach (Fieldman, Rogers) – no update
- *Building Decarbonization (Becker, Ebel, Fieldman) – Etherton will schedule a meeting
- *Open Space Plan Update (Calmes, Rogers, Salmon) – Kinser working to get documents prepared for the subcommittee; she will email the subcommittee
- *Crocker Trail Frog Habitat (Rogers, Nunan, Calmes) – weed-whacking in the channel; Kinser notes it was the property owner and she is investigating if Fire sent a letter about weed abatement despite her requesting them not to
- *Invasive Species Ordinance (Becker, Fieldman, Nunan) – Kinser reported she has received feedback from the PW Director and had concerns with code enforcement identifying plants. She will schedule a subcommittee meeting.
- *Dark Skies Ordinance (Becker, Ebel, Salmon) – has met twice since OSEC's last meeting; brought on a dark skies consultant who provided recommendations that staff and the subcommittee are working through; recently focused on outreach previously discussed
- *Tree Issues (Calmes, Ebel, Salmon) – previously covered inventory/canopy plan; Calmes noted she and Ebel are working on a recommended street tree list; Kinser noted a purchase order and tree company set to plant a Jacaranda in the median of Alvarado and San Francisco; Etherton noted that Salmon had drafted an article for the STAR
- Baylands Specific Plan subcommittees – no updates but keep on active list; discussed the review process.

CALENDAR ITEMS – the group briefly reviewed the calendar, with Etherton noting that Coastal Cleanup Day was in fact Sept 23, not the 16th as listed.

CHAIR AND COMMITTEE MEMBER MATTERS

- Rogers asked about Crocker Trail project coming in under budget and being able to use any excess grant funds for goats to address the gorse at the back of the horseshoe. Kinser noted that it was a federally funded project that had to go through environmental review for specific activities included in the grant application, and also that there had already been some cost increases due to needs not captured in the original contract.

NEXT MEETING: August 23, 2023; Becker will be remote for the next two meetings and Calmes will be absent in August

ADJOURNMENT – 8:33 PM

File Attachments for Item:

C. Response to Little Hoover Commission's report on SB 1383



City of Brisbane
 Department of Public Works
 50 Park Place
 Brisbane, CA 94005-1310
 (415) 508-2130

The Honorable Gavin Newsom
 Governor of California

The Honorable Pedro Nava
 Chair of the Little Hoover Commission
 and members of the Commission

The Honorable Toni Atkins
 President pro Tempore of the Senate
 and members of the Senate

The Honorable Brian Jones
 Senate Minority Leader

The Honorable Robert Rivas
 Speaker of the Assembly
 and members of the Assembly

The Honorable James Gallagher
 Assembly Minority Leader

Subject: Response to Little Hoover Commission Report #274 "Reducing California's Landfill Methane Emissions: SB 1383 Implementation"

Dear Governor, Members of the Legislature, and Members of the Little Hoover Commission:

The City of Brisbane Open Space and Ecology Committee (OSEC) and Public Works staff implementing SB 1383 have reviewed the Little Hoover Commission (LHC) recommendation to pause SB 1383; notwithstanding our concurrence with many of the report's recommendations, we disagree with the overarching conclusion to pause SB 1383's implementation.

Brisbane has been working hard to implement SB 1383, including beginning our enforcement actions in January 2023, a full year earlier than required. While we agree that SB 1383 presently has many challenges and flaws, taking a pause when so much time, expense and effort has already been expended, and while the climate crisis demonstrates again and again that it waits for no one, would be a mistake. Rather than pausing implementation, we simply recommend that enforcement actions against jurisdictions be put on hold while the report's other recommendations are implemented. In particular, increased funding and support for local jurisdictions and a public education campaign are vital to long-term success of waste reduction and diversion efforts. Statewide efforts to expand infrastructure and market opportunities for recycled waste, organic or otherwise, are essential to meeting state climate and environmental goals.

Brisbane is grateful for the partnership with the franchise waste hauler for most of our jurisdiction, South San Francisco Scavenger Company, and their on-site anaerobic digester. This forward-looking investment allows local organic waste to be turned into Renewable Natural Gas, powering the fleet of collection trucks and meeting a significant portion of local procurement requirements under SB 1383. We support state zero-emission vehicles and net-zero emissions goals but believe that we cannot solve our waste challenges without putting these materials back into productive use, and therefore encourage review of conflicting rules in a way that recognizes the value of this type of closed-loop system.

We agree this is a critical opportunity to advance California's fight against climate change and encourage pausing enforcement actions against jurisdictions while continuing to implement SB 1383 and the recommendations in the LHC report.

Sincerely,

Adrienne Etherton, Sustainability Manager
 City of Brisbane Public Works Department

Erin Becker, Chair
 Open Space and Ecology Committee

Cc: Brisbane City Council; Assemblymember Diane Papan; Senator Josh Becker

Providing for Today, Preparing for Tomorrow

E.

File Attachments for Item:

E. Discuss goats to address gorse at west end of Crocker Trail

FREMONTIA

JOURNAL OF THE CALIFORNIA NATIVE PLANT SOCIETY



USING ALPINE FLORA TO MEASURE ECOLOGICAL
EFFECTS OF CLIMATE CHANGE,
SERPENTINE SOILS AND PLANTS,
AND OTHER ARTICLES

MANAGING A MOUNTAIN: THE SAN BRUNO MOUNTAIN HABITAT CONSERVATION PLAN

by Patrick Kobernus

In 1982, the first Habitat Conservation Plan (HCP) in the nation was approved for San Bruno Mountain. Over the past 30 years most of the mountain, approximately 2,830 acres (82%), has been conserved as habitat for three endangered butterfly species, wildlife, and plants; and approximately 350 acres (10%) of the mountain has been developed. An additional 260 acres (8%) of land remains undeveloped, and it is likely that a majority of this land will ultimately be set aside as

conserved habitat.¹ As of 2012, most of the development on the mountain has been completed.

Management of invasive species to protect the endangered species habitat on the mountain has been largely successful over the past 30 years. However, coastal scrub succession, in combination with ex-

panding populations of invasive species, continue to overtake grassland habitat on the mountain. The future conservation of the endangered species and their habitats, now more than ever, depends upon implementation of a more comprehensive habitat management program to protect these species for future generations.

¹ Most of the remaining “unplanned parcels” will likely be conserved due to these lands being located on very steep slopes with no infrastructure (roads, utilities) for development. The HCP requires that a minimum of 40% of this land be dedicated as conserved habitat.



The San Bruno Mountain Habitat Conservation Plan—adopted in 1982 and the first HCP in the nation—is responsible for protecting host plants for three endangered butterflies, and conserving the area’s diverse native flora and fauna. All photographs by the author unless otherwise indicated.

MOUNTAIN FLORA AND FAUNA

San Bruno Mountain is located in northern San Mateo County, adjacent to San Francisco. It consists of approximately 2,830 acres of open space, and is bordered by the urban and suburban portions of Daly City, South San Francisco, Colma and Brisbane. Though it is isolated by urbanization, the mountain is considered the northernmost part of the Santa Cruz Mountains.

The famed botanist James Roof asserted that San Bruno Mountain supports one of the last and the most expansive areas of a unique and highly diverse grassland and shrubland flora, which he referred to as “Franciscan” (Edwards 2000). This Franciscan

flora was once common throughout the hills of San Francisco but has been almost entirely destroyed in the city by development and planting of nonnative trees.

The grassland on San Bruno Mountain is actually a combination of different types of grasslands intergrading and sharing some of the same wildflower and shrub associates. Grassland types vary on the mountain depending on elevation, exposure, and soil type. The dryer southern exposures tend to have stands of purple needle grass (*Nassella pulchra*), while the more fog-shrouded grasslands near the summit are dominated by California fescue (*Festuca californica*), red fescue (*F. rubra*), and Idaho fescue (*F. idahoensis*). There are also stands of California oat grass (*Danthonia californica*), blue wild rye (*Elymus glaucus* var. *glaucus*), Pacific reed grass (*Calamagrostis nutkaensis*), June grass (*Koeleria macrantha*), and tufted hair grass (*Deschampsia cespitosa* ssp. *holciformis*).

As a biologist hired to monitor the three endangered butterfly species on San Bruno Mountain for 13 years, I can attest to its unique beauty. Each spring and summer, I would hike the mountain repeatedly while I recorded my observations of the mission blue, San Bruno elfin, and callippe silverspot butterflies, and the status of their grassland habitats.

The San Bruno elfin's host plant, Pacific stonecrop (*Sedum spathulifolium*), grows in coastal prairie and on rocky outcrops and roadcuts. The Callippe silverspot's host plant, Johnny jump up (*Viola pedunculata*), grows in coastal prairie and in nonnative annual grasslands. The mission blue's host plants, silver lupine (*Lupinus albifrons* var. *collinus*), var-



TOP: A freshly emerged male mission blue butterfly (*Icaricia icarioides missionensis*), found in San Bruno Mountain's grassland habitat. It is an endangered species. • MIDDLE: A mission blue larva feeding on silver lupine (*Lupinus albifrons* var. *collinus*) on the west peak of San Bruno Mountain. • BOTTOM: A San Bruno elfin larva foraging on the flowerheads of its host plant, Pacific stonecrop (*Sedum spathulifolium*) near the summit of San Bruno Mountain.

ied-colored lupine (*L. variicolor*), and summer lupine (*L. formosus* var. *formosus*) grow within coastal prairie, nonnative annual grassland,

rocky outcrops, roadcuts, and on cut slopes.

The mountain is not only home to three endangered butterfly species but also supports a wide diversity of other native flora and fauna. Many varieties of wildflowers can be found on the mountain, including coast rock cress (*Arabis blepharophylla*), Pacific stonecrop, varied-color lupine,

Johnny jump up, goldfields (*Lasthenia californica*), shooting stars (*Dodecatheon hendersonii*), blue larkspur (*Delphinium decorum*), farewell to spring (*Clarkia rubicunda*), and owl's clover (*Castilleja densiflora*), among many others. Each patch of grassland is a uniquely beautiful "natural garden" that has been constructed through the forces of nature and time. Each March through June, the grasslands and wildflowers emerge and change into new combinations of color and beauty as the season progresses.

There are several rare plant species including two that are state and/or federally listed, San Bruno Mountain manzanita (*Arctostaphylos imbricata*) and San Francisco lessingia (*Lessingia germanorum*). There are also several California Rare Plant Rank 1B species (formerly CNPS List 1B) such as Montara manzanita (*Arctostaphylos montaraensis*), Pacific manzanita (*Arctostaphylos pacifica*), Diablo helianthella (*Helianthella castanea*), San Francisco spineflower (*Chorizanthe cuspidata* var. *cuspidata*), and San Francisco campion (*Silene verecunda* ssp. *verecunda*). Other rarities include an arachnid, incredible harvestman (*Bank-sula incredula*); a solitary bee (*Dufourea stagei*); and several range-limited endemic plants.

Plant communities on the mountain include northern coastal scrub,

coast live oak woodland, coastal terrace prairie, freshwater marshes and seeps, central coast riparian scrub, nonnative gorse and broom scrublands, nonnative eucalyptus forest, and nonnative annual grassland. The most dominant vegetation on the mountain is northern coastal scrub and nonnative annual grassland.

FIRST HABITAT CONSERVATION PLAN IN U.S.

Since 1982 the mountain has been the site of the first Habitat Conservation Plan (HCP) in the nation. HCPs were created as a mechanism to balance private property rights and endangered species protection, by allowing limited “tak-

This mechanism has been used as a tool for settling land disputes by allowing landowners to economically develop portions of their properties, while simultaneously ensuring long-term protection of endangered species through dedication of conservation areas, habitat management and monitoring, and/or other mechanisms. As of 2010, over 700 HCPs have been permitted in the U.S. by the U.S. Fish and Wildlife Service (USFWS 2010).

The primary purpose of the San Bruno Mountain HCP is to protect the grassland habitat that supports the three endangered butterfly species, while allowing limited development to occur. Prior to the formation of the HCP, approximately 1,950 acres of land on San Bruno Mountain had been purchased and/or donated to create the San Bruno

Mountain State and County Park. This land contained virtually the entire habitat for the San Bruno elfin butterfly on the mountain. However, it did not include the prime habitat areas for the mission blue and callippe silverspot butterflies, which were located on the eastern portions of the mountain.

The HCP provided a mechanism by which an additional 800+ acres of habitat would be conserved and added to the Park,

and all of the conserved land within the park would be managed and monitored for the endangered species as well as for other native flora and fauna. Within the current 2,830-acre conservation area, approximately 90% of the mission blue and callippe silverspot butterflies’ habitat, and 100% of the San

Bruno elfin butterfly’s habitat has been protected.

The development permitted through the HCP is primarily relegated to the lower slopes of the mountain, thereby protecting the majority of higher quality butterfly habitat on the upper ridges and hilltops. For the callippe silverspot, this was critical, because this species requires hilltops for mate selection. Male callippes stake out territories on the highest hilltops or ridgelines available to encounter and attract females for mating.

The conservation areas also included protection of several rare plant species, with the exception of most of the San Francisco lessingia and San Francisco spineflower populations, which are located on private property on the west side of the mountain. These populations are still extant, however development and invasive species are potential threats.

The HCP specified the importance of management and monitoring of the butterflies’ habitat and provided a funding mechanism to support these activities—an annual monetary assessment on every residence and business that is built within the HCP boundary. This assessment rises with the annual inflation rate, and has provided a consistent level of funding since the creation of the HCP.

The HCP fund is managed by the HCP Trustees (the City Managers of Daly City, Brisbane, and South San Francisco, and the San Mateo County Manager). Monitoring and habitat management is implemented by San Mateo County Parks Department, and implementation of the plan is overseen by the U.S. Fish and Wildlife Service.

THREATS FROM INVASIVE SPECIES

In 1982, an assortment of aggressive invasive plant species were



View of housing development and mission blue butterfly host plant, silver lupine (*Lupinus albifrons* var. *collinus*) on the southeast ridge of San Bruno Mountain. Development is no longer the most serious threat to the grassland habitat on the mountain. A greater threat is coastal scrub succession and the expansion of invasive species.

ing” (destruction) of endangered species and their habitat, provided that the taking will not appreciably reduce the likelihood of the survival and recovery of the species in the wild, as specified in section 10(a)(1)(B) of the federal Endangered Species Act.

identified and mapped on the mountain. Gorse (*Ulex europaeus*), the most aggressive of these plants, was introduced to the mountain in the 1930s and by 1982 had expanded to cover several hundred acres of the mountain. Based on the rate of expansion of this plant and that of other invasive weeds, combined with illegal off-road vehicle use and coastal scrub succession, it was estimated that the habitat for the endangered butterfly species on the mountain could be completely wiped out within 50 to 200 years (San Bruno Mountain HCP Steering Committee 1982).

As a result, the funding and

implementation of ongoing habitat management with an emphasis on controlling invasive species became an important component of the San Bruno Mountain HCP. Due to the lack of information on the feasibility of habitat restoration at the time of the inception of the HCP, the HCP's primary goal has been focused on the conservation and management of existing habitat for the butterflies (San Bruno Mountain HCP Steering Committee 1982).

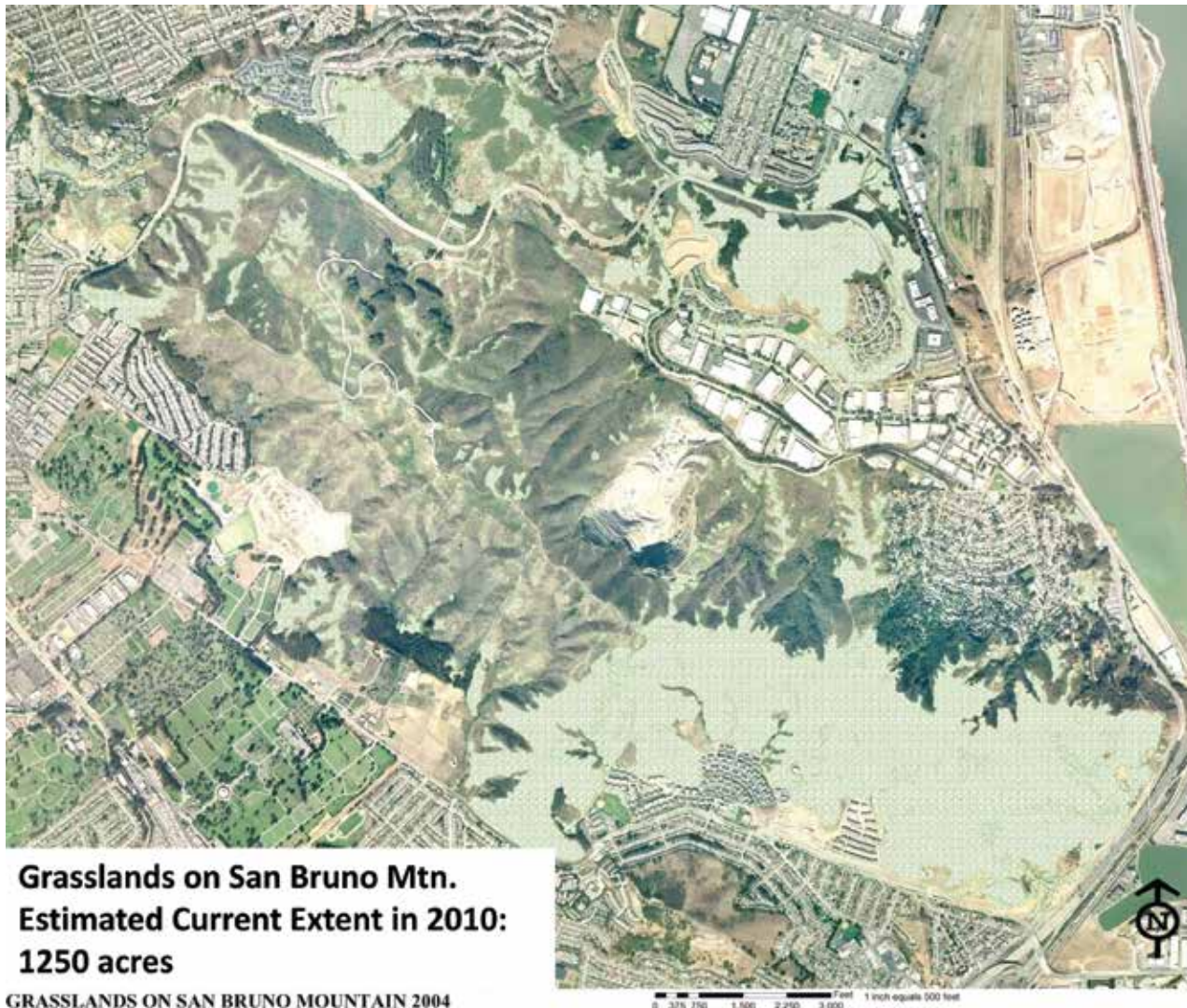
Though the HCP has often been criticized for the lack of restoration work that has been conducted, the strategy of focusing efforts on protecting the existing habitat has

proven to be successful in maintaining most of the habitat for the endangered species over the 30-year span of the HCP. While the reductions of large infestations has been effective, it is the less noticeable habitat maintenance work that is done year in and year out by HCP work crews and volunteer groups that serves to protect the majority of the butterfly habitat on the mountain.

HABITAT RESTORATION

Restoration of mission blue and callippe silverspot habitat is required by the HCP within areas that were disturbed by grading activi-

Extent of grasslands on San Bruno Mountain as mapped in 2004. Map produced by TRA Environmental Sciences and provided courtesy of San Mateo County Parks Department.





ties adjacent to the developments. These areas have steep slopes that were engineered to protect against landslides. Restoration of butterfly habitat has not been successful on most of these slopes, due to the difficulty in establishing native plants in poor soil conditions. This is especially true for the host and nectar plants for the callippe silverspot butterfly. Propagating and replanting of the callippes' host plant Johnny jump up has shown to be expensive, with very little success to date. Johnny jump up is difficult to grow under nursery conditions, and has had a very low survival rate when transplanted into restoration sites. For the mission blue however, its host plants (especially silver lupine) have been re-established on several restoration slopes because these plants are adapted to disturbed rocky slopes with thin or poor soil conditions.

CURRENT THREATS AND MANAGEMENT

While efforts have been successful in reducing the large, woody invasive species on San Bruno Mountain, control work has been less effective at stemming the tide of coastal scrub succession. An independent analysis of almost 20 years of butterfly data collected over the course of the HCP revealed that the overall distribution of the mission blue and callippe silverspot butterflies remained stable. However, geographic areas of concern were identified for each species.

For the period between 1982 and 2004, San Bruno Mountain lost an estimated 122 acres (8.6%) of grassland habitat. This was primarily due to coastal scrub succession within the HCP conservation area (San

Mateo County Parks Department 2008). This corresponds to a loss of over five acres of grassland per year. The expansion of coastal scrub vegetation and corresponding loss in grassland has been documented in many regions of California (Murray 2003, McBride and Heady 1968), and is often the result of the removal of grazing and/or burning from a grassland ecosystem.

Historically cattle grazing and brush burning by local ranchers resulted in the control of coastal scrub vegetation on San Bruno Mountain, but also facilitated the spread of invasive plant species. Invasive grasses such as riggut brome (*Bromus diandrus*), velvetgrass (*Holcus lanatus*), and invasive herbaceous weeds such as fennel (*Foeniculum vulgare*), wild radish (*Raphanus sativus*), and oxalis (*Oxalis pes-caprae*) have proliferated because of the ability of these species to rapidly expand into grasslands (San Mateo County Parks Department 2008). Atmospheric sources of nitrogen pollution (smog) may also be contributing to the spread of these invasive grasses and weeds within the grasslands (Weiss 2006).

As more and more weeds proliferate and die back, the resultant accumulation of live and dead biomass (thatch) reduces the amount of light reaching the soil surface, suppressing the growth of native grassland plants. Increased moisture retention from the shade created by thatch may also facilitate the expansion of coastal scrub into the grassland areas. Furthermore, where invasive control work has been done for decades, there is a significant build-up of thatch from old stalks of fennel, broom, and gorse plants that were left to decay in place.

The level of thatch within the

grasslands on San Bruno Mountain was evaluated in 2002 using live and dead above-ground biomass measurements. Values measured within the grasslands on the south slope of the mountain prior to experimental grazing treatments, showed live and dead above ground biomass levels of 5,000 to 9,000 lbs/acre. A large proportion of this was from thatch. As a comparison, the recommended ranges for Residual Dry Matter (live biomass) in coastal prairie grasslands with minimal woody plant cover ranges from 1,200 to 2,100 lbs/acre (UC Davis 2002).

The reduction in wildfires, removal of grazing animals in the early 1960s from the mountain, and atmospheric nitrogen pollution are all likely factors contributing to the proliferation of invasive plants, build-up of thatch, and brush succession on the mountain.

FUTURE MANAGEMENT

The San Bruno Mountain HCP has been an experiment—the first of its kind—to protect endangered species habitat while allowing limited development. For 30 years the plan has been a qualified success in that all three of the endangered butterfly species on the mountain continue to be locally abundant. However, management of the conservation areas will need to adapt to changing conditions and address problems such as coastal scrub succession and invasive weeds in a more comprehensive way. The 2008 San Bruno Mountain Habitat Management Plan spells out in detail the priority areas to protect, the current and emerging threats to the mountain's habitats, and the methods for monitoring and management to address these threats.

FACING PAGE, TOP: Buckeye Canyon in 1986. This photograph was taken approximately 25 years after cessation of cattle grazing on San Bruno Mountain. • BOTTOM: Buckeye Canyon in 2006. This photograph was taken approximately 45 years after the cessation of grazing. Coastal scrub vegetation is overtaking grasslands at a rate of approximately five acres per year. Photographs courtesy of TRA Environmental Sciences and San Mateo County Parks Department.



View of the ridge above Owl Canyon near the summit of San Bruno Mountain. The area contains prime grassland habitat, including native wildflowers and shrubs, for the Callippe silverspot and San Bruno elfin butterflies, both endangered.

Until 2010, threats to native habitats on San Bruno Mountain could not be addressed comprehensively given the existing management budget. However, as a result of an agreement reached between developers, the city of Brisbane, San Mateo County Parks Department, and the U.S. Fish and Wildlife Service, an additional four million dollars will be generated through development fees and placed into an endowment for the mountain. Once collected, these funds would increase the HCP annual budget for habitat management by two to three times its former level. These funds need to be used to manage more grassland areas on the mountain.

With accelerated changes ex-

pected to occur from global climate change, it is important to preserve as much potential grassland habitat as possible to buffer the endangered species from occasional large-scale declines in habitat quality. For example, in the extremely wet El Niño year of 1998, the numbers of mission blue butterflies on San Bruno Mountain declined markedly in areas where silver lupine was the dominant host plant. Silver lupine experienced a widespread die-off due to a fungal infestation brought on by the excessive wet soil conditions. This impact was observed throughout the range of the species (including the Marin headlands and at Twin Peaks, San Francisco).

In contrast, habitat areas on San

Bruno Mountain that supported the alternative host plant summer lupine were unaffected by the fungus, and mission blue butterfly numbers in these areas remained stable. In the subsequent 14 years, silver lupine plants have rebounded significantly, as have the mission blue numbers in the areas impacted by the fungus. Protecting areas of different habitat quality, slope aspect, and within different microclimates is important because habitat quality can be expected to fluctuate over time, due to plant senescence and climatic factors, and these fluctuations may become more extreme in the future.

While prescribed burning may continue to be difficult to imple-

ment on San Bruno Mountain due to public safety concerns, grazing and/or mowing should be implemented to reduce vegetation fuel loads between parkland areas and homes and businesses. Stewardship grazing or mowing of 100–500-foot buffer zones on regular intervals would reduce fuel loads near populated areas and could potentially allow for the safe use of controlled burns in some areas of the mountain. Also, grazing or mowing within lower elevation areas between parklands and developments would not impact the more intact stands of coastal prairie, which are more concentrated on the upper slopes of the mountain.

Grazing, mowing, and/or burning will need to be applied to address scrub succession and invasive weed infestations on San Bruno Mountain. These tools will need to be used in combination with other weed control methods to manage areas effectively. There must be a prescriptive approach that is tailored in timing, duration, and frequency to each area of the mountain, depending upon the grassland type, surrounding terrain, presence of rare and endangered species, and public safety concerns.

CONCLUSIONS

Over the years, the San Bruno Mountain HCP has received a substantial amount of criticism from environmental groups regarding the lack of successful habitat restoration on the mountain. In contrast, resource managers have emphasized the positive aspects of the HCP and how it has worked to protect the endangered species habitat and native plant communities. The reality is that both groups are right. The restoration work has been largely unsuccessful on the graded slopes, while the habitat management has been successful in protecting the endangered species populations within the conservation areas.

The primary focus of environ-

mental groups has been on fighting development on San Bruno Mountain, under the assumption that development is the major threat to the endangered species. In reality, though, the permitted development has impacted approximately 10% of the mountain and was relegated to lower slopes, generally of lesser habitat value. The development is now nearing completion. The only way to protect the endangered species and the plant communities of San Bruno Mountain for future generations will be to manage the remaining conserved habitat more effectively.

The 2008 Habitat Management Plan for San Bruno Mountain established a goal of maintaining between 1,200–1,800 acres of native and non-native grassland on the mountain. Currently the area of grassland is approximately 1,250 acres, but it is decreasing at a rate of approximately five acres per year. Slowing the rate of coastal scrub succession and increasing the amount of grassland will require that brush control programs be implemented sooner rather than later.

The San Bruno Mountain story is not unique: brush succession and invasive species have been negatively impacting grasslands and meadows throughout California for several decades. The San Bruno Mountain HCP is unusual, however, in that it has had a mandate and funding to address these issues for 30 years. It will take a coordinated effort on the part of biological monitors, habitat managers, oversight agencies, environmental groups, and the community to work cooperatively and creatively to ensure that the mountain's endangered species and unique Franciscan flora are protected for the next 30 years.

REFERENCES

- Edwards, S.W., 2000. *The Franciscan Region. Transcript of a Lecture by James Roof ca. 1975*. The Four Seasons, Journal of the Regional Parks Botanic Garden, Volume 11, Number 2. October 2000. Published by East Bay Regional Park District, Oakland, CA.
- McBride, J., and H.F. Heady, 1968. *Invasion of Grasslands by Baccharis Pilularis*. Journal of Range Management. 21:106-108.
- Murray, M.P., 2003. *Losing ground: wilderness meadows and tree invasion over a 55-year period in California's Klamath Range*. Pp. 81-97, In: K.L. Mergenthaler, J.E. Williams, and E.S. Jules (eds). Proceedings of the Second Conference on Klamath-Siskiyou Ecology. Siskiyou Field Institute, Cave Junction, OR.
- San Bruno Mountain Habitat Conservation Plan Steering Committee, 1982. *San Bruno Mountain Habitat Conservation Plan, Volumes I and II*. Chaired by the County of San Mateo. Plan prepared by Thomas Reid Associates, November.
- San Mateo County Parks Department, 2008. *San Bruno Mountain Habitat Management Plan, 2007. Prepared in Support of the San Bruno Mountain Habitat Conservation Plan*. Revised 2008. San Mateo County Parks and Recreation Division. March 2008.
- University California at Davis, 2002. *California Guidelines for Residual Dry Matter (RDM) Management on Coastal and Foothill Annual Rangelands*. Rangeland Monitoring Series, Publication 8092. University of California Davis, Division of Agriculture and Natural Resources, California Rangelands Research and Information Center.
- U.S. Fish and Wildlife Service, 2010. *U.S. Fish and Wildlife Service, Conservation Plans and Agreements Database*. Website accessed October 10, 2010. http://ecos.fws.gov/conserv_plans/public.jsp
- Weiss, S.B., 2006. *Impacts of nitrogen deposition on California ecosystems and biodiversity*, California Energy Commission Report. Website publication accessed on June 25, 2007. <http://www.creeksidescience.com/publications.html>
- Patrick Kobernus, 1072 Geneva Avenue, San Francisco, CA 94112, crecology@gmail.com