



# CITY *of* BRISBANE

## Public Art Advisory Committee Agenda

---

**Monday, July 17<sup>th</sup>, 2023 at 4:30PM • Hybrid Meeting**

**Brisbane City Hall, Large Conference Room, 50 Park Place, Brisbane, CA and  
17390 Ryan Avenue, Lake Elsinore, CA 92530**

---

The public may observe/participate in Public Art Advisory Committee meetings by using remote public comment options or attending in person. Committee members shall attend in person unless remote participation is permitted by law. The Committee may take action on any item listed in the agenda.

### **JOIN IN PERSON**

Location: 50 Park Place, Brisbane, CA 94005 - [Large Conference Room](#) and  
17390 Ryan Avenue, Lake Elsinore, CA 92530

Masks are no longer required but are highly recommended in accordance with California Department of Health Guidelines. To maintain public health and safety, please do not attend in person if you are experiencing symptoms associated with COVID-19 or respiratory illness.

### **JOIN VIRTUALLY**

Join Zoom Webinar: [brisbaneca.org/pa-zoom](https://brisbaneca.org/pa-zoom) (please use the latest version: [zoom.us/download](https://zoom.us/download))

Webinar ID: 865 6065 0564

Call In Number: 1 (669) 900-9128

Note: Callers dial \*9 to “raise hand” and dial \*6 to mute/unmute.

The agenda materials may be viewed online at [www.brisbaneca.org](http://www.brisbaneca.org) at least 72 hours prior to a Meeting. Archived videos can be replayed on the City’s website, [brisbaneca.org/meetings](http://brisbaneca.org/meetings). Please be advised that if there are technological difficulties, the meeting will nevertheless continue.

## **TO ADDRESS THE COMMITTEE**

### **IN PERSON PARTICIPATION**

To address the Committee on any item on or not on the posted agenda, please wait until Public Comments are being accepted.

### **REMOTE PARTICIPATION**

Members of the public may observe/participate in the Committee meeting by logging into the Zoom Webinar. Aside from commenting while in the Zoom meeting, the following email line will be monitored during the meeting, and public comments received will be noted for the record during Public Comment or during an Item.

Email: [aibarra@brisbaneca.org](mailto:aibarra@brisbaneca.org)

### **SPECIAL ASSISTANCE**

If you need special assistance to participate in this meeting, please contact Angel Ibarra at (415) 508-2109. Notification in advance of the meeting will enable the City to make reasonable arrangements to ensure accessibility to this meeting.

**COMMITTEE MEMBERS:**

Chair Greenlee, Vice-Chair Salmon, Mayor Davis, Councilmember Cunningham, Park & Recreation Commissioner Seawell, Committee Member Glazman, Committee Member Kellstedt

**ROLL CALL**

- A. Consider any request of a City Councilmember to attend the meeting remotely under the “Emergency Circumstances” of AB 2449

**APPROVAL OF AGENDA****APPROVAL OF MINUTES**

- B. Approve Minutes from June 26<sup>th</sup>, 2023 Public Art Advisory Committee

**PUBLIC HEARING**

- C. Review Proposed Private Art Installation Project from Phase 3  
(Committee will consider their recommendation to the City Council)

**PRESENTATIONS AND DISCUSSION ITEMS**

- D. Continue Discussion Regarding the Relocation of the Plug Preserve
- E. Discuss Potential Opportunities at Firth Park

**PUBLIC COMMENT****NEXT MEETING**

Discuss whether to have the next meeting on Monday, August 21<sup>st</sup> at 4:30pm or take a Summer Break and resume on September 18<sup>th</sup>.

**ADJOURNMENT**

**File Attachments for Item:**

B. Approve Minutes from June 26th, 2023 Public Art Advisory Committee



# CITY of BRISBANE

## Public Art Advisory Committee Minutes

Monday, June 26<sup>th</sup>, 2023 at 4:30PM • Hybrid Meeting

### CALL TO ORDER - 4:33 p.m.

#### ROLL CALL

Committee Members Present: Chair Greenlee, Vice-chair Salmon, Councilmember Cunningham, Park & Recreation Commissioner Seawell, Committee Member Diane Glazman

Committee Members Absent: Mayor Davis, Committee Member Danielle Kellstedt

Staff Members Present: Park & Recreation Director Leek, Clerk Padilla

#### A. Consider any request of a City Councilmember to attend the meeting remotely under the "Emergency Circumstances" of AB 2449

None

#### APPROVAL OF AGENDA

Approved by Salmon, seconded by Glazman. 5 Ayes, 2 Absent

#### APPROVAL OF MINUTES

##### B. Approve Minutes from May 1<sup>st</sup>, 2023 Public Art Advisory Committee

Glazman recommended one correction on Page 2. The figure should say \$1.85 Million.

Approved by Salmon, seconded by Cunningham as amended. 5 Ayes, 2 Absent

#### PRESENTATIONS AND DISCUSSION ITEMS

##### C. Review of AB 2449 (Ways Members of a Legislative Body May Participate in Meetings)

City Clerk Padilla reviewed AB 2449 regarding Public Meetings and answered questions from members.



**D. Discuss Relocation of Plug Preserve**

The committee discussed possible ideas and locations for the Plugs. They suggested sponsor a retired plug fundraiser to hire professionals to rehabilitate and repaint plugs. Another suggestion was to hire a professional to design the spaces (e.g., benches, sitting area to chat and enjoy the plugs). They would also like to see all of the plugs numbered for finding them and also for a citizen who may be confused about their location.

Possible locations suggested: Group a few plugs and place in Firth Park (concerns about safety issues for toddlers going into the street); on Old County Road in front of Skate Park; Quarry Park entrance; behind Gazebo/flagpole; and Festival of Lights Tree area. They would really like to keep it in accessible, pedestrian, central areas.

Staff was directed to provide funding samples (e.g., find out how projects like Skate Park and basketball court was financed) and how many more plugs do we have in storage.

Members wanted to bring back this discussion at the next meeting.

**E. Update on the Public Art Master Plan RFP**

Staff has published and distributed the RFP to more than 50 consultants, and many expressed interest. The deadline for submission is July 14<sup>th</sup>, so the committee could review the applicant submissions in September and decide whether to conduct interviews with all of them or a few.

It was clarified that smaller projects can be tackled and does not need to wait for a city-wide master plan.

**PUBLIC COMMENT**

Public Comment from Michael Barnes: Perhaps the plugs can be used like bollards to provide a safety barrier from cars at Firth Park or even in other areas.

**NEXT MEETING DATES**

Monday, July 17<sup>th</sup>, 2023 at 4:30pm

**ADJOURNMENT**

5:17PM

C.

**File Attachments for Item:**

C. Receive a Presentation from Phase 3 Regarding their Submitted Private Art Installation



## PUBLIC ART ADVISORY COMMITTEE MEMO

**Meeting Date:** July 17, 2023

**To:** Public Art Advisory Committee

**From:** Noreen Leek, Parks & Recreation Director

**Subject:** Phase 3 – Privately installed Public Art Proposal

### Purpose

To increase citizens' appreciation of art, to improve quality of life, and to enhance Brisbane's identity as a unique community within the greater Bay Area.

### Recommendation

Consider the Phase 3 package and make a formal recommendation to the City Council to reject or recommend the installation as proposed.

### Background

In accordance with the public art implementation guidelines, all privately installed public art will be reviewed by the Public Art Advisory Committee. The Public Art Advisory Committee is responsible for reviewing and making decisions on conceptual design plans submitted by a developer of a project subject to the public art requirement.

The City of Brisbane's public art implementation guidelines provide direction to developers regarding the City's Art in Public Places Program. Private nonresidential and non-live-work building developments with building development costs above five million dollars (\$5,000,000.00) shall contribute an amount equal to at least one percent of their building development costs into the Brisbane public art fund as an in-lieu contribution. Alternatively, at the discretion of the owner or developer, such projects may devote an amount equal to at least one percent of their building development costs for the acquisition and installation of publicly accessible art on the development site, subject to the provisions of Section 15.85.060 of the Brisbane Municipal Code. This section applies to both new projects and building alterations/additions.

### Discussion

Phase 3, the developer of the Genesis Marina life sciences campus located at 3000-3500 Marina Blvd, has submitted a proposal for privately installed public art on their property. Their complete proposal package is provided in Attachment 1 which identifies the artists, includes concept plans and renderings, and a budget valuation. The City has provided public notices to all properties within 1,000 feet of the property and posted as required by law. The Committee shall review the proposal and consider the artistic quality (vision, originality, and craftsmanship); context (architectural, historical, geographical, and socio-cultural context of the site); quality and permanency of materials; maintenance; safety; diversity of artists; representation in the existing collection of publicly-accessible artworks; and diversity of artworks (media, scale, style, intention) in the existing collection of publicly accessible artworks.

The Public Art Advisory Committee will make a recommendation on the proposed artwork to the City Council who will have final approval authority. If the Council does not approve the proposed project, it can refer the item back to the Advisory Committee for reconsideration.

**Fiscal Impact**

No fiscal impact. All costs associated with installing and maintaining privately installed public artwork will be the expense of the private entity.

**Attachments**

1. Phase 3 privately installed public art proposal package



---

Noreen Leek, Parks & Recreation Director



C.

GENESIS MARINA, BRISBANE CA  
PHASE 3 REAL ESTATE

9

June 2023

**PHASE3**  
— REAL ESTATE PARTNERS —

SOM

**1**  
**Genesis Marina**

Context  
Architecture

**2**  
**Artists**

Ivan McLean  
Curt Brill

**3**  
**Artwork**

Construction  
Materials  
Maintenance

**4**  
**Budget**

Cost Estimate

# Genesis Marina

Context  
Architecture

C.

TE ACCESS

101

### LEGEND

- FREEWAY ACCESS
- - - BAY TRAIL
- ... PROPOSED BAY TRAIL
- SIERRA POINT SHUTTLE
- OYSTER POINT FERRY

12

E+3000-3500 MARINA BLVD  
MORE OWINGS & MERRILL LLP



C. **ite Plan**

Proposed Bay Trail extension  
in 3500 Marina Blvd

Existing Bay Trail (on street)

Proposed Bay Trail extension  
in 1000 Marina Blvd

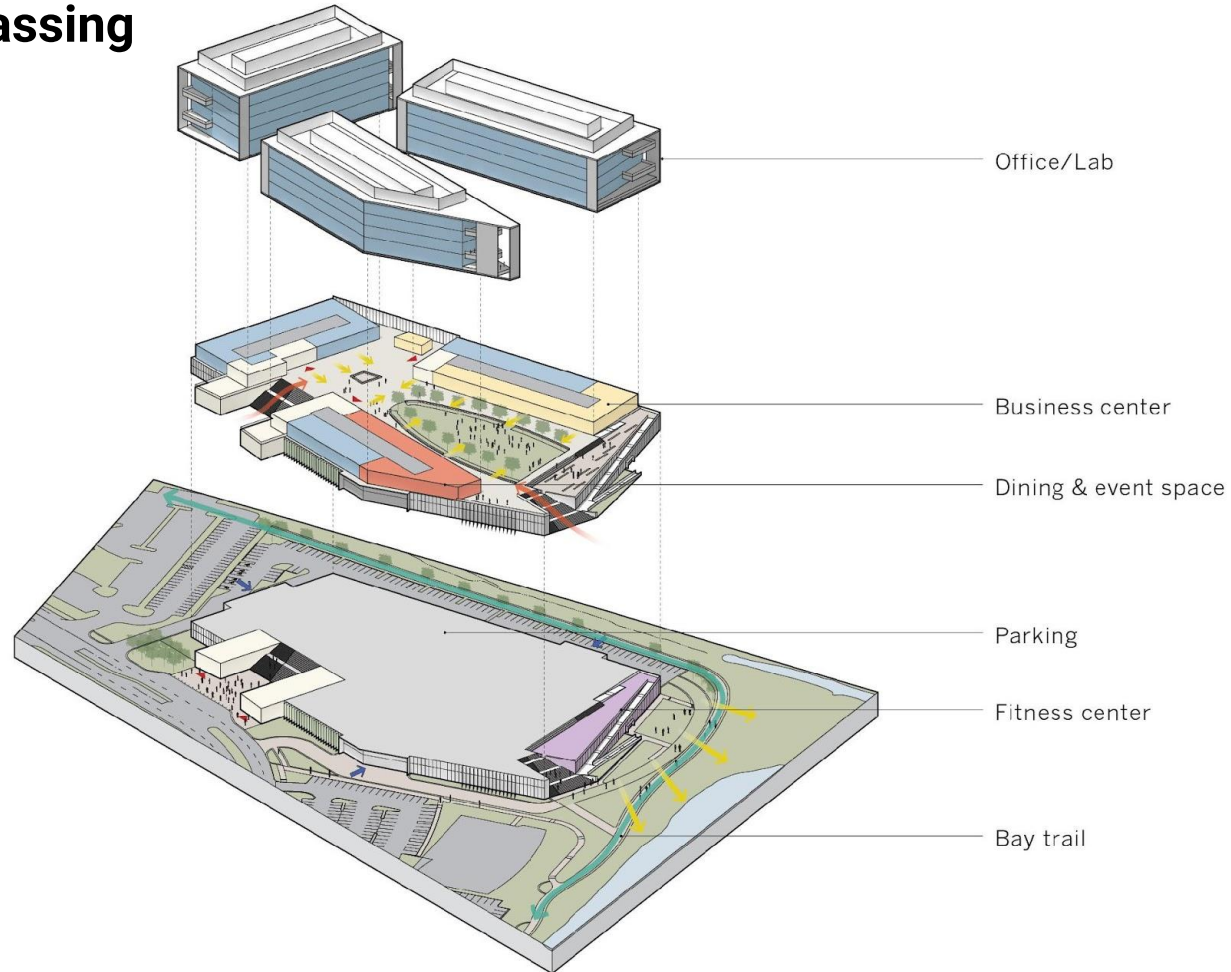
Existing Bay Trail

LEGEND

- Existing Bay Trail
- - Existing Bay Trail (on street)
- - Proposed Bay Trail Extension



# C. Program & Massing





C.





C.



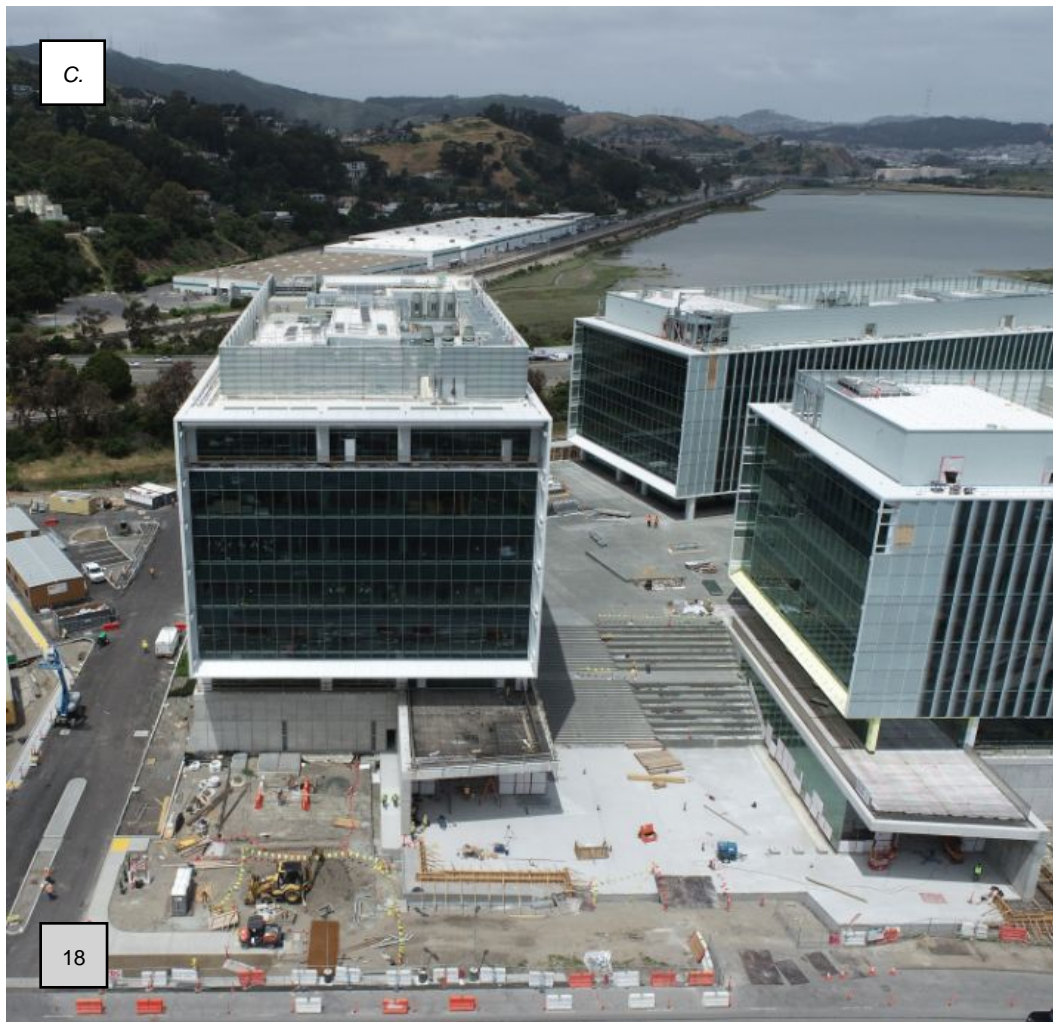


C.





C.



18



# Artists

2

Ivan McLean  
Curt Brill







I grew up in Point Reyes Station, a rural environment which helps explain my interest in agriculture. This led to raising livestock, working with orchards, vineyards, culminating in a degree in Farm Management from Cal Poly, San Luis Obispo. A stint in the Peace Corps followed in the Southern Philippines followed by time in the Australian outback and travel through Asia.

Returning home I switched my focus to welding, making furniture and small sculpture to sell in the flea market in Sausalito, right off 101. The success there encouraged me to continue my self taught career as a sculptor and over the last 30 years made thousands of pieces in a variety of materials that have found homes all over the world, just last year I was in Riyadh, Saudi Arabia installing a 10' disco ball. I look to create beautiful, original sculptures that will hopefully convey joy and perhaps, when it's a 20' sphere, a bit of awe.

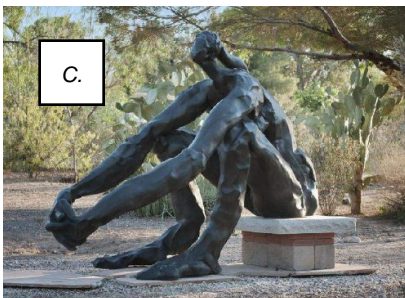


Born in 1952 in the Bronx, New York, Curt began his serious pursuit of an art career while attending Cornell University. It began with exhibitions at Cornell that showcased his drawings, ceramic work and silk screening. Even though drawing has been his first and enduring love, professionally he has been most noted for his 3 dimensional work. His ceramic pieces have been widely collected across the United States since the mid 1970's. He began his career in bronze in 1980, with pieces that were a direct outgrowth of his history with clay. The work has always been sensual, a direct response to the feel of the materials he has chosen to use. Being a people watcher with a keen eye by nature, and having a potent sense of humor and an easy demeanor, it is easy to see how his personal style has evolved. His work has now been met with wide appeal by individual collectors within the United States, Europe and Japan.

# Artwork

Construction  
Materials  
Maintenance

3

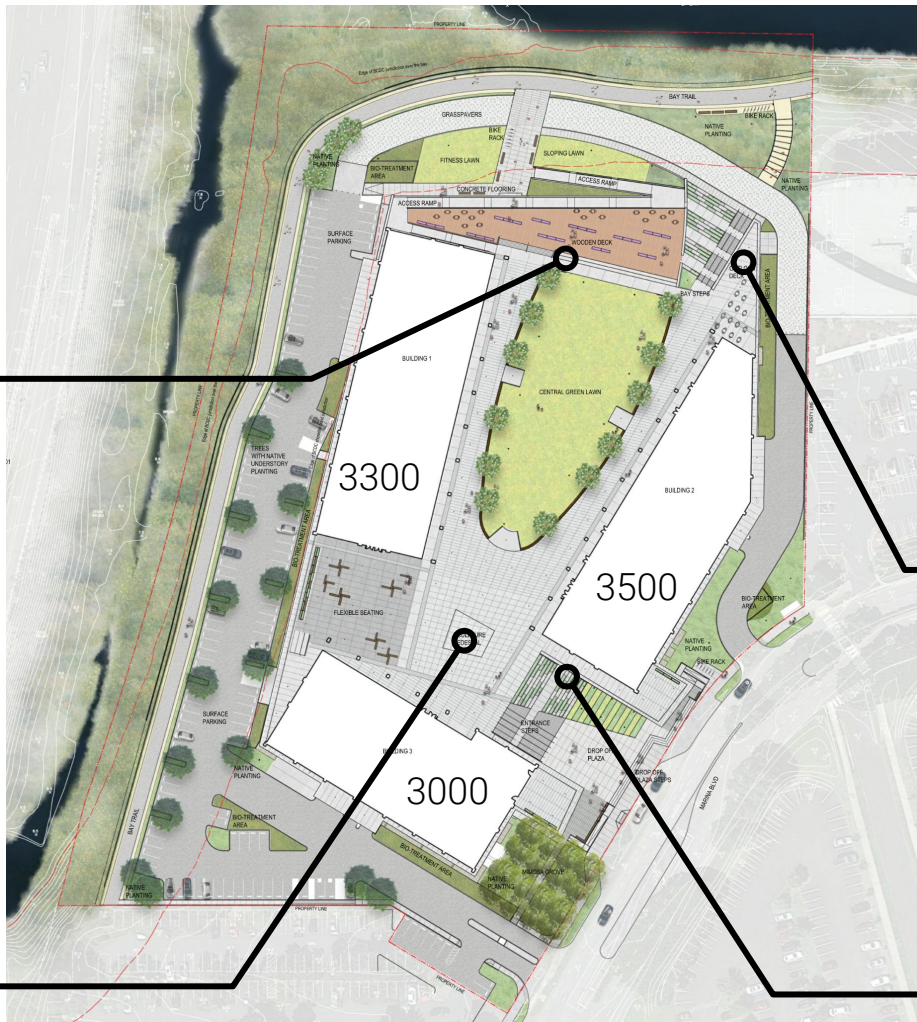


C.

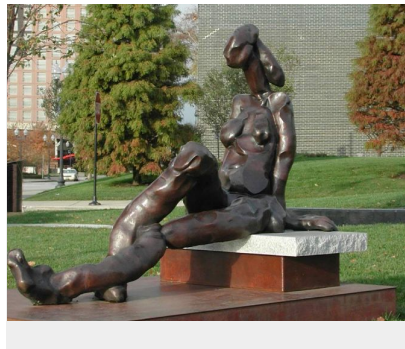
**B. Curt Brill - Seated Diana**



**A. 25 h McLean - CO<sub>2</sub>**



**C. Curt Brill - Michelle**



**D. Curt Brill - Katia**

The sculpture will be made up of three spheres representing Carbon Dioxide, placed in a planter on the podium level of Genesis Marina. The location is the apex of the lawn overlooking the bay, centered between the three buildings, and visible from Marina Boulevard.

The 20' sphere representing Carbon, will be made from arced lengths of 3/16" x 2" Cor Ten flat bar. The flat bar segments are random lengths ranging from 3" to 10" and will be welded together in random pattern creating a sphere that's "transparent" from all sides while having a defined outline.

#### CO<sub>2</sub>

Materials

Size

26

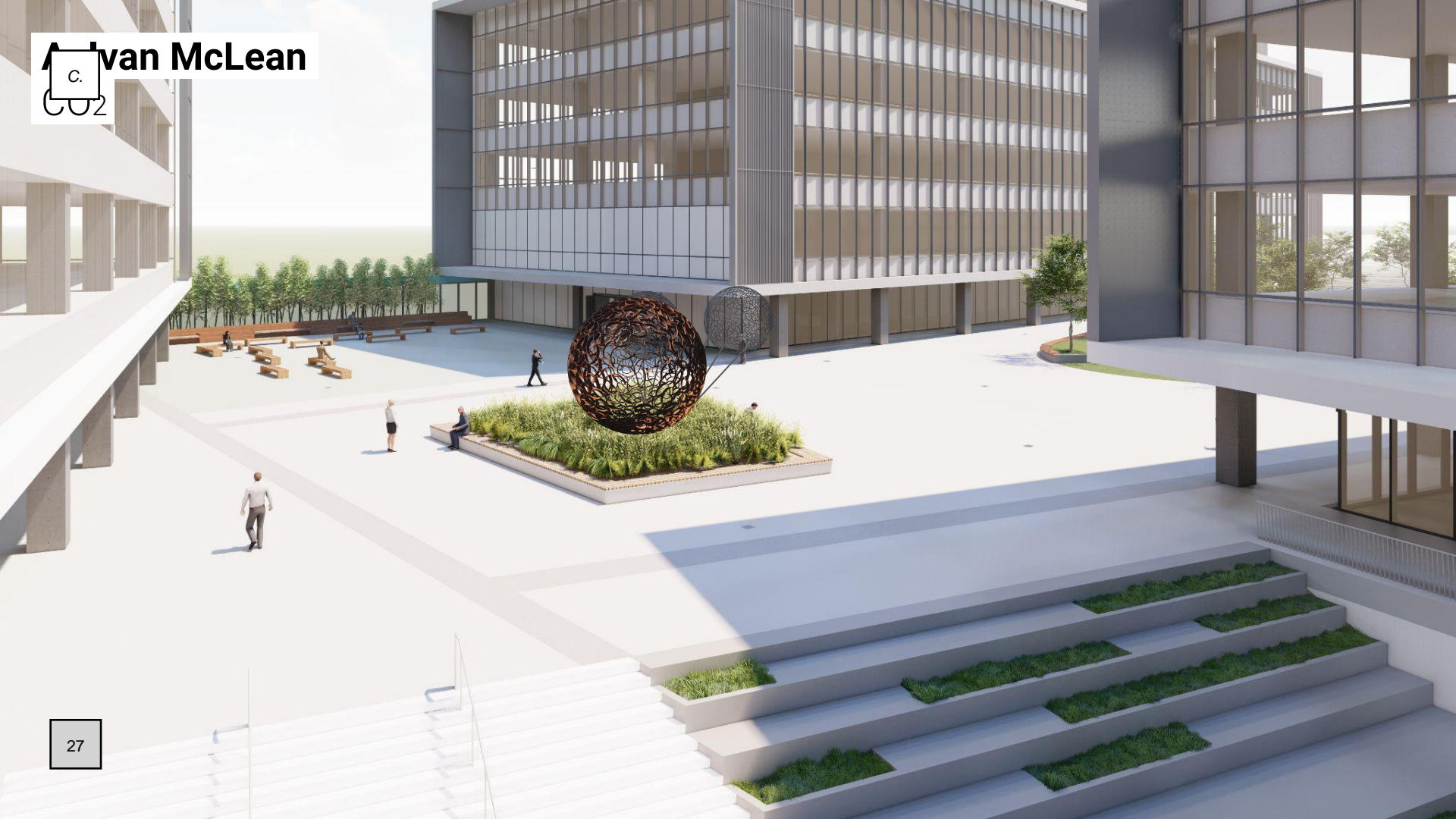
GENESIS MARINA

SKIDMORE, OWINGS & MERRILL LLP

The two 8' spheres representing Oxygen will be made from 5/16" stainless round bar. Using a pattern that I used for a another sculpture for Phase-3, an overlapping series of "+" will give these a slightly uneven, choppy exterior that still reads as a true sphere. These will be supported by a column made from three lengths of stainless pipe, providing enough strength for support while not looking too imposing.

Sculptures will be lit by multiple luminaire types and potentially from various angles including potential uplighting depending on the artwork. Any potential uplighting will be turned off at midnight.







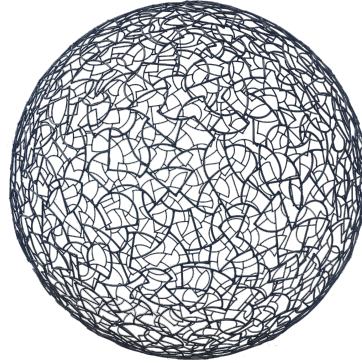


## Materials and Maintenance



### Weathering Steel

Cor Ten, A588 steel is an alloy that maintains its strength while allowing surface rusting for an attractive, maintenance free finish.



### Stainless Steel

316 stainless steel is a corrosion resistant alloy that will be able to withstand the local weather conditions.



### Maintenance

The maintenance for this piece should be fairly minimal. Recommend an annual pressure washing using a mild soap to remove any dust or spider webs.

# Curt Brill Seated Diana



## Seated Diana

Bronze

75" x 57" x 98"

30

GENESIS MARINA

SKIDMORE, OWINGS & MERRILL LLP



# Curt Brill Seated Diana



## Seated Diana

Bronze

75" x 57" x 98"

31

GENESIS MARINA

SKIDMORE, OWINGS & MERRILL LLP







**Michelle**

Bronze

102"x 47"x 52"

32

GENESIS MARINA

SKIDMORE, OWINGS & MERRILL LLP





**Michelle**

Bronze

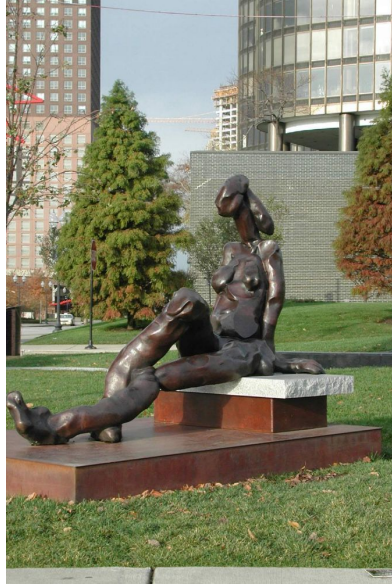
102"x 47"x 52"

33

GENESIS MARINA

SKIDMORE, OWINGS & MERRILL LLP





**Katia**  
Bronze  
60"x 48"x 87"





**Katia**

Bronze

60" x 48" x 87"

35

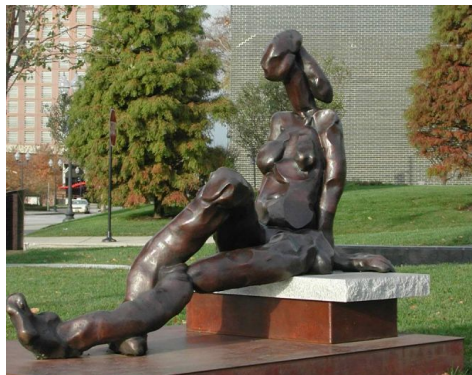
GENESIS MARINA

SKIDMORE, OWINGS & MERRILL LLP



# **D. Curt Brill**

## Materials and Maintenance



## Bronze

[www.gsa.gov](http://www.gsa.gov) Bronze: Characteristics, Uses And Problems

Statuary bronze is typically used in outdoor sculpture. Its forms are almost limitless since it may be cast in any shape for which a mold can be devised. Bronze is an alloy of copper which can vary widely in its composition. It is often used as a material harder than copper is required, strength and corrosion resistance is required and for ornamental purposes.

## Maintenance

[www.gsa.gov](http://www.gsa.gov) Cleaning And Oiling Statuary Bronze Surfaces

- Wash the surfaces with mild soap and a soft cloth rubbing with the grain of the metal. Clean surface dirt and grease only, do not rub down to bright metal. Rinse thoroughly with clear water.
- Remove all stains, oxides, sulfides or corrosion products with abrasive and standard solvent. Refinish areas of bright metal work with oxidizing agent, to match the existing cleaned statuary finish.
- Remove cleaning residue with two applications of a standard solvent using a soft cloth. Apply oil to the surface, rubbing with a soft clean cloth, followed by a brisk rubbing with a second clean soft cloth to remove all excess oil. On irregular, molded surfaces, a soft fiber brush may be used as an applicator.



Budget

Cost Estimate

4

	Artworks
\$195,000	A. CO2
\$165,000	B. Seated Diana
\$70,000	C. Michelle
\$85,000	D. Katia
\$62,000	Design and Engineering
\$50,000	Lighting
\$303,000	Planter Modifications
\$115,000	Installation and Structural Reinforcement

---

**= \$1,045,000**



*D.*

**File Attachments for Item:**

D. Continue Discussion Regarding the Relocation of the Plug Preserve



## PUBLIC ART ADVISORY COMMITTEE MEMO

**Meeting Date:** July 17, 2023

**To:** Public Art Advisory Committee

**From:** Noreen Leek, Parks & Recreation Director

**Subject:** Plug Preserve Relocation-Part II

### Background

The City of Brisbane's painted hydrants started as a bicentennial project by the Federated Women's Club of Brisbane in 1976. Over the decades there have been several restoration efforts and in 2014, stewardship of the event and painted hydrants has been the responsibility of the Parks and Recreation department. Brisbane's painted hydrants accentuate its unique identity, and their artistic designs are as expressive and varied as the citizens who painted them.

The plug preserve was located at the corner of Visitacion & Mariposa adjacent to Julie's Deli. In 1992, the plug preserve was dedicated to Jeanne Berman-Hosking and the Federated Women's Club of Brisbane for bringing joy to Brisbane residents. The land, however, does not belong to the city and the owners have graciously allowed its public use for several decades. The area is now being reclaimed by the property owners and, therefore, the hydrants have been removed and safely stored by the City's Public Works team. Public Works staff confirmed they have the following hydrants in storage at this time: 12 painted hydrants from the former preserve, 3-4 painted hydrants that are out of service, and 5-6 out of service standard hydrants that can be incorporated and utilized if desired.

### Discussion

The Public Art Advisory Committee is tasked with determining the future of the plug preserve to ensure its historical significance and preservation. The Public Art Advisory Committee met on 6/23/2023 to discuss alternate locations to be explored, including the following: the Community Park, Quarry Park, Crocker Trail, Skatepark along Old County Road or Park Lane, Mission Blue, etc. See Attachment 1 for a map of City-owned parcels for consideration and Attachment which incorporates site images for prospective locations. The Commission also discussed the possibility of establishing an artful space that could encompass a landscaped seating area while simultaneously honoring the historical hydrants.

### Fiscal Impact

Funds to support this effort are available within the Public Art Fund (Fund 275).

### Attachments

1. Map of City-owned parcels
2. Images of prospective sites

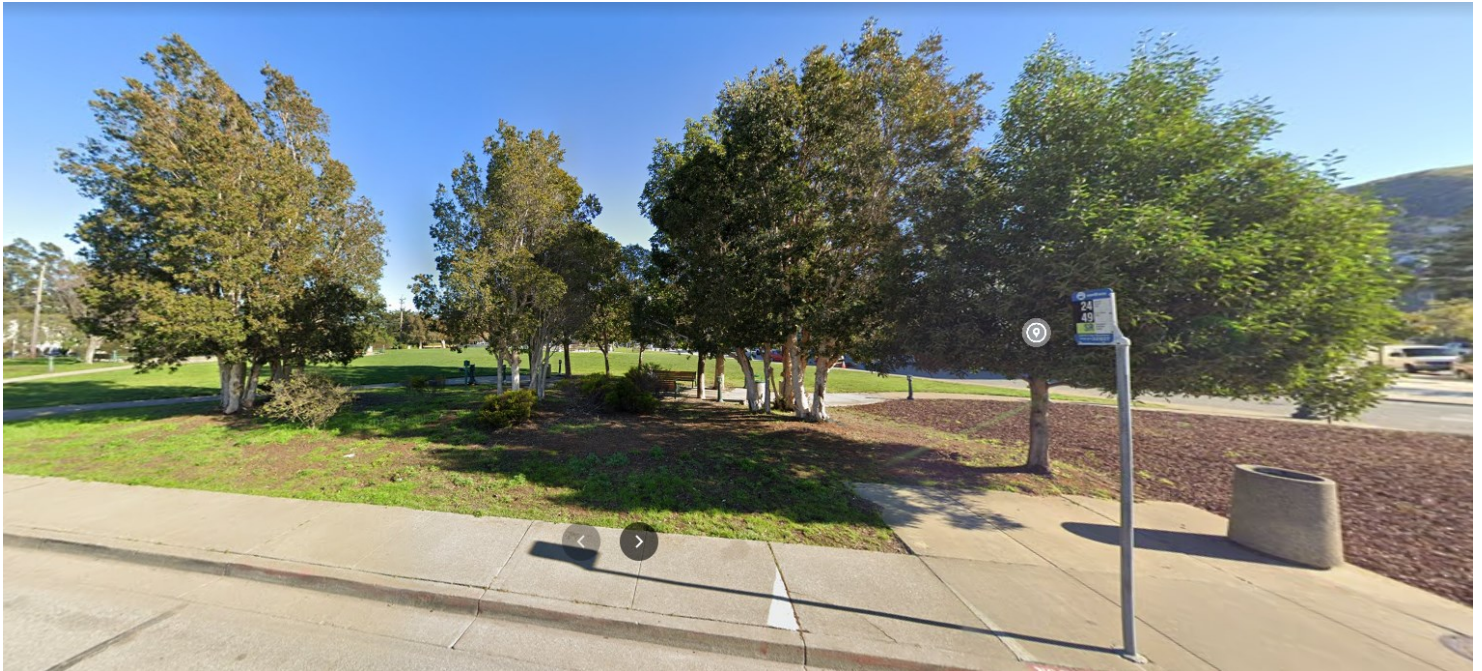
Noreen Leek, Parks & Recreation Director

# MAP OF CITY-OWNED PARCELS IN BRISBANE





# COMMUNITY PARK





# QUARRY PARK AND TRAIL ENTRANCE





# SKATEPARK



NOT CITY PROPERTY:



NEAR BASKETBALL  
COURTS:





# MISSION BLUE



## **OTHER ALTERNATIVES FOR CONSIDERATION:**

ENTRANCE TO CROCKER INDUSTRIAL PARK, BAYSHORE BETWEEN  
OLD COUNTY & VALLEY, FIRTH PARK, CITY HALL, COMMUNITY  
CENTER, SIERRA POINT, CROCKER TRAILHEADS, BOFA SITE

E.

**File Attachments for Item:**

E. Discuss Potential Opportunities at Firth Park



## PUBLIC ART ADVISORY COMMITTEE MEMO

**Meeting Date:** July 17, 2023

**To:** Public Art Advisory Committee

**From:** Noreen Leek, Parks & Recreation Director

**Subject:** Firth Park Art Opportunities

### Background

The Public Art Advisory Committee recently discussed tackling a few small-scale projects. One of those included refurbishing the existing art at Firth Park and the possibility of identifying additional opportunities within the space.

### Discussion

There are a few pieces of existing public art at Firth Park that are in need of restoration and repair. They include a helix sculpture, turtle sculpture, and name marquee. All three are pictured in Attachment 1.

In addition to existing art, there are other opportunities to incorporate art within the confines of the park. Staff have highlighted a few opportunity spaces in Attachment 2 which can be further discussed amongst the Committee to determine whether there is a desire to pursue additional art integration at the park. The Committee should discuss desired next steps and provide direction to staff.

### Fiscal Impact

Funds to support this effort are available within the Public Art Fund (Fund 275).

### Attachments

1. Existing art at Firth Park
2. Firth Park opportunity spaces/site images

  
Noreen Leek, Parks & Recreation Director







# Firth Park Art Opportunity Spaces

## ATTACHMENT 2

