



CITY COUNCIL WORKSHOP

June 02, 2026 at 6:00 PM

Boardman City Hall Council Chambers

AGENDA

1. CALL TO ORDER
2. FLAG SALUTE
3. ROLL CALL/EXCUSED ABSENCES
4. REPORTS, CORRESPONDENCE, AND DISCUSSION
 - A. Wastewater Facility Plan - Mike Lees, Anderson Perry
 - B. Collection System Studies - Mike Lees, Anderson Perry
5. ADJOURNMENT

Zoom Meeting Link: <https://us02web.zoom.us/j/2860039400?omn=89202237716>

This meeting is being conducted with public access in-person and virtually in accordance with Oregon Public Meeting Law. If remote access to this meeting experiences technical difficulties or is disconnected and there continues to be a quorum of the council present, the meeting will continue.

The meeting location is accessible to persons with disabilities. Upon request of an individual who is deaf or hard of hearing, accommodations such as sign language or equipment for the hearing impaired must be requested at least 48 hours prior to the meeting. To make your request, please contact the City Clerk at 541-481-9252 (voice), or by e-mail at city.clerk@cityofboardman.com.

Wastewater Facilities Plan & Collection System Study City Council Presentation

Mike Lees, P.E.



System Overview

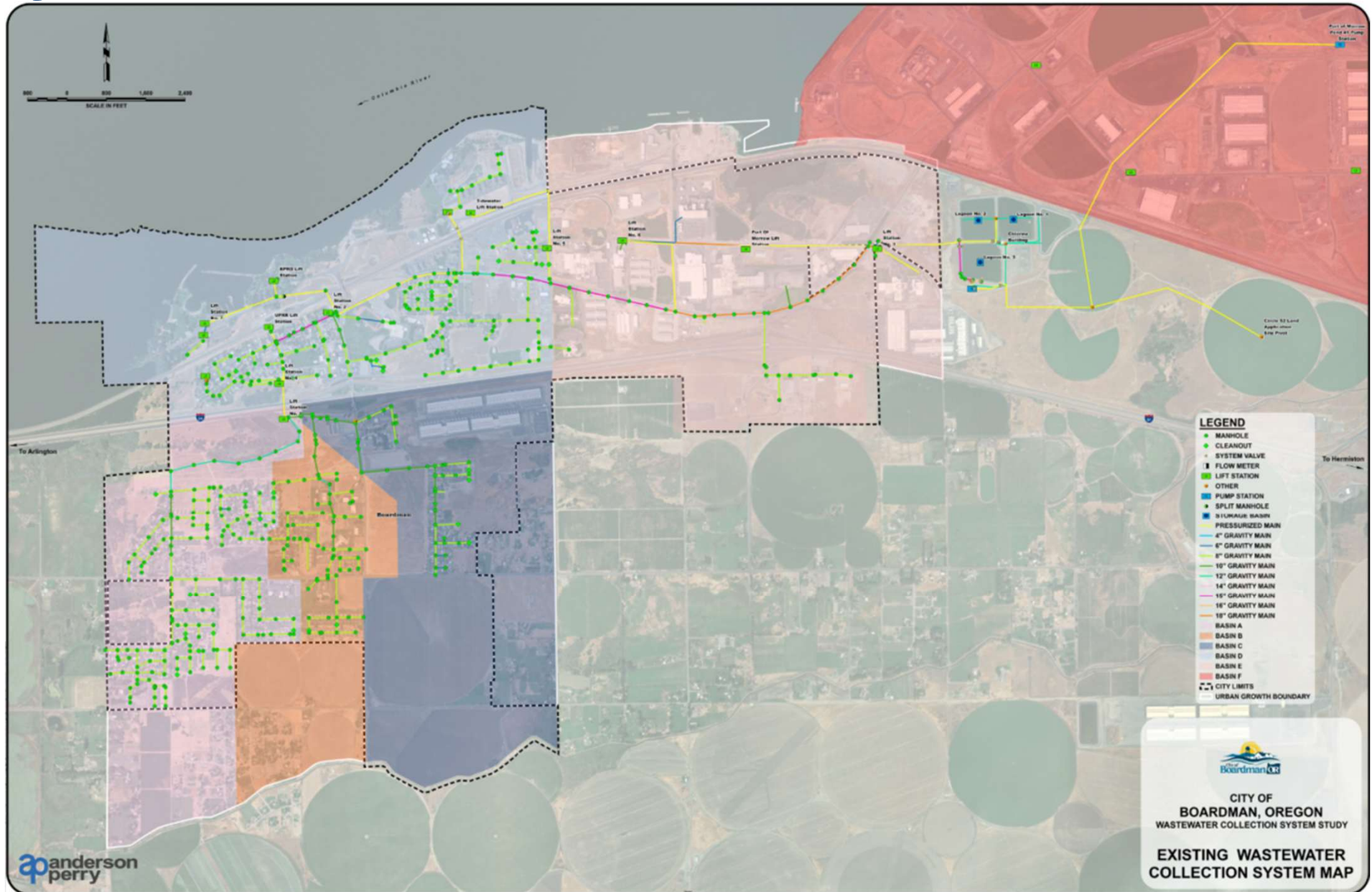


Figure 2-1 Existing Wastewater System

DESIGN CRITERIA

Section 4, Item A.

	Existing 2025	Future 2046
Population ¹	5,820	7,633
AAF, MGD ²	0.391	0.511
Per Capita Flow, gpcd	67	67
I/I ³ , MGD	0.145	0.145
AWWF, MGD ⁴	0.432	0.553
Per Capita Flow, gpcd	75	72
Base Wastewater Flow, MGD ⁵	0.246	0.366
Per Capita Flow, gpcd	48	48
Maximum Daily Flow, MGD ⁶	0.625	0.745
Per Capita Flow, gpcd	109	98
Peak Hourly Flow, MGD ⁷	1.245	1.570
Per Capita Flow, gpcd	214	214
Average Influent BOD ₅ , mg/L	273	274
lbs/day ⁸	891	1168
lbs/capita/day	0.15	0.15
Average Influent TSS, mg/L	324	325
lbs/day ⁸	1056	1385
lbs/capita/day	0.18	0.18

Figure 2-4 Design Criteria

TV Inspection Summary

Section 4, Item A.

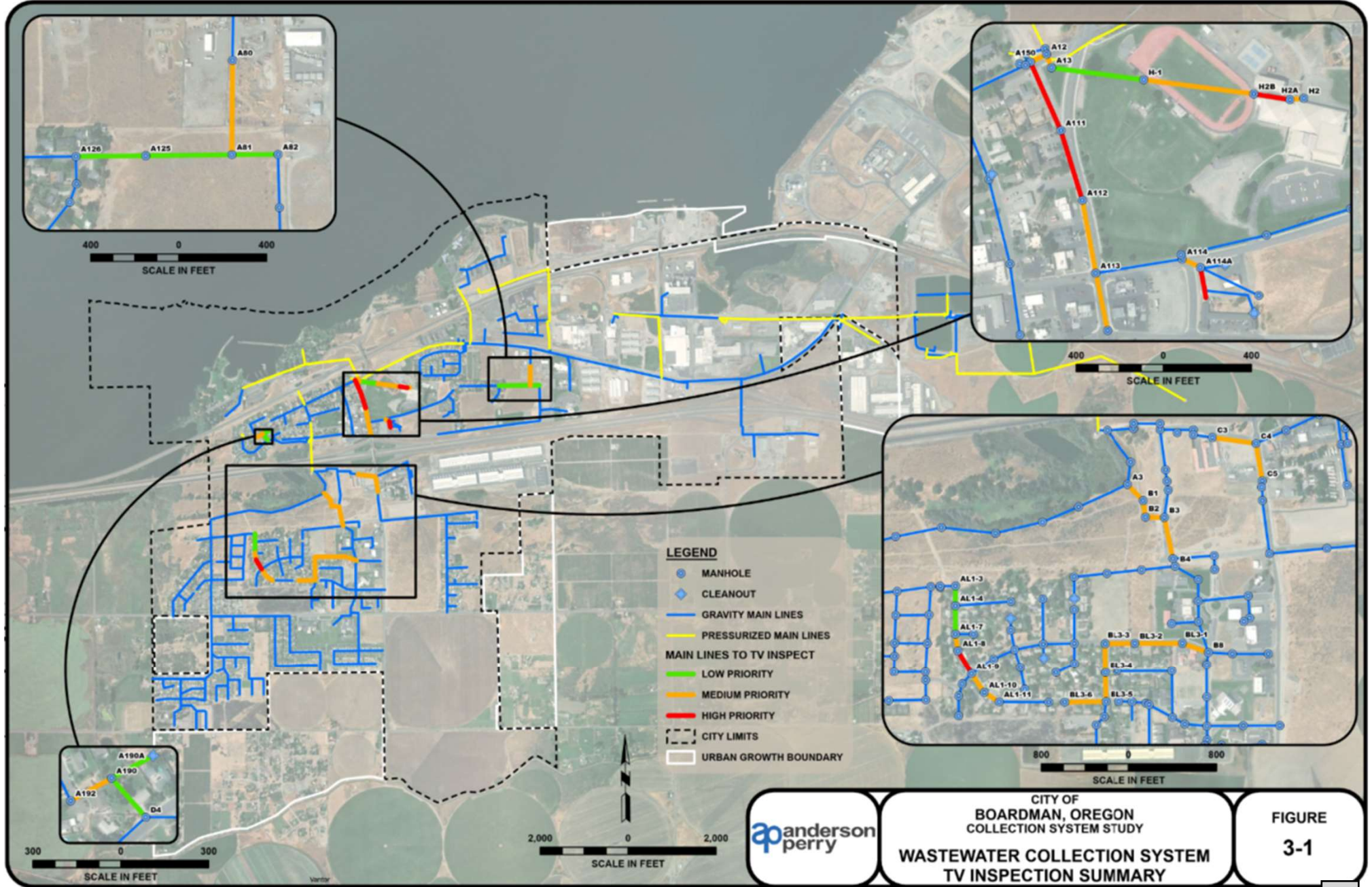
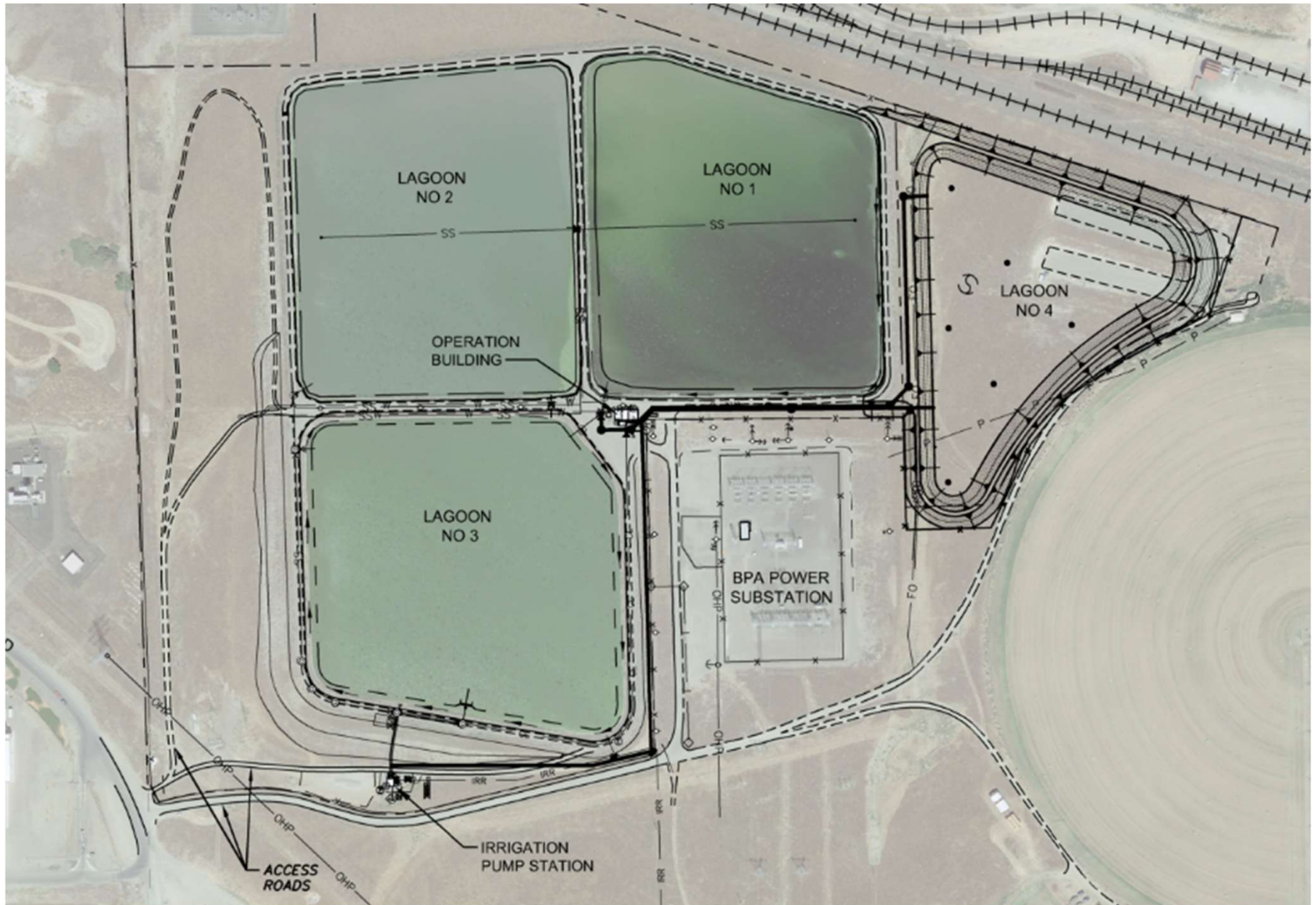


Figure 3-1 TV Inspection Summary

WWTF Improvement Options



Growth Driven Improvements

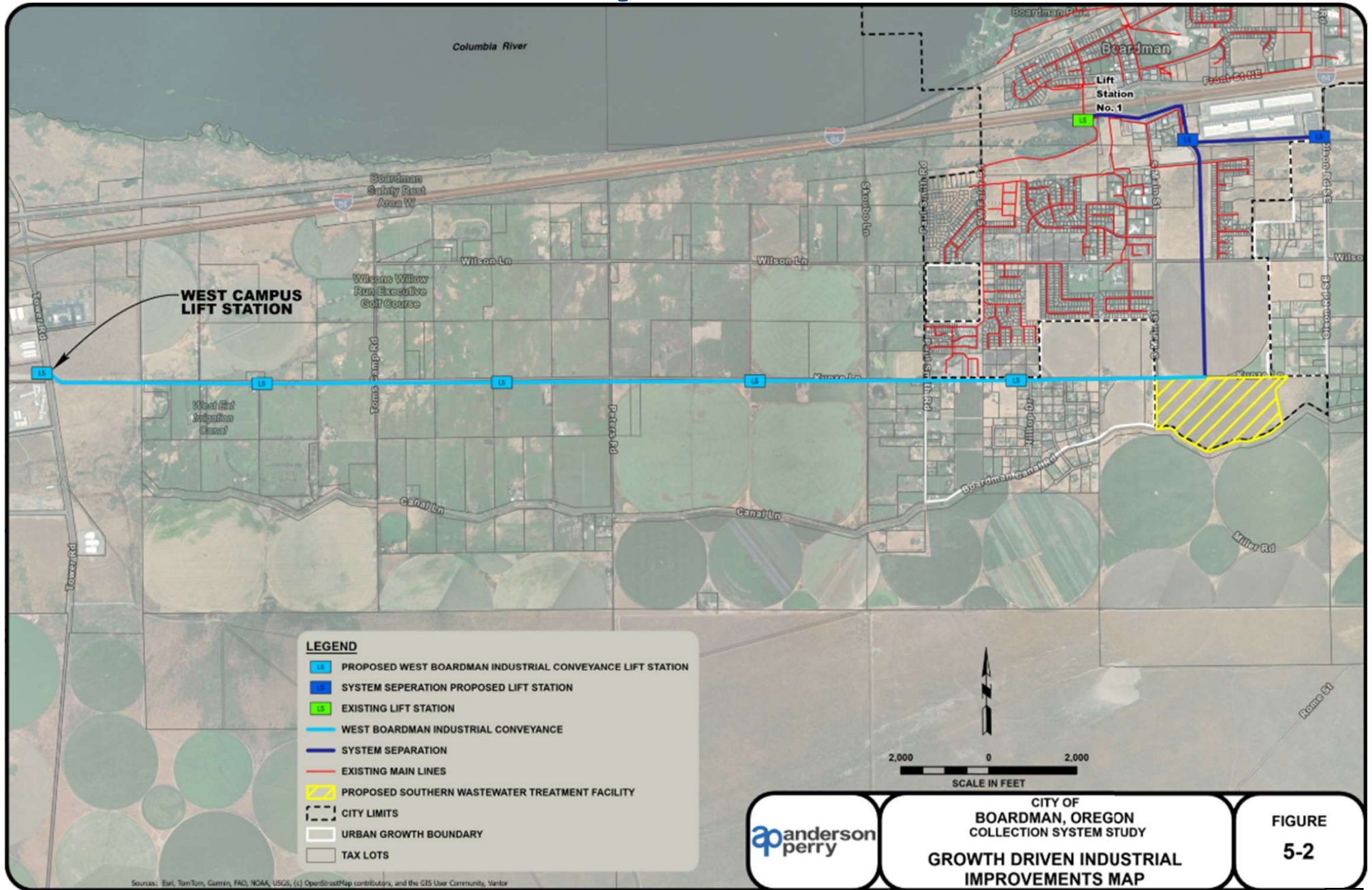


Figure 5-2 Growth Driven Industrial Improvements Map

Comments and/or Questions

Mike Lees, P.E.

mlees@andersonperry.com

(541) 963-8309

