



# AGENDA

## CITY COUNCIL WORKSHOP

7651 E. Central Park Ave, Bel Aire, KS

Video Available at [belaireks.gov](http://belaireks.gov)

November 14, 2023 7:00 PM



### I. STREETS

- A. 45th Street – Garver
- B. 53rd Street - Garver

### II. PLANNING AND DEVELOPMENT

- [A.](#) Proposed Sanitary Sewer & Pretreatment Ordinance – Burns & McDonnell
- B. Comprehensive Development Plan Update - PEC
- C. Revised Zoning Map - PEC

### III. CITY ADMINISTRATION / CODES

- [A.](#) 2024 Fee Schedule - Ted

### IV. OTHER?

### V. DISMISS

Additional Attachments

- [A.](#) Managers Report - November 14

### Notice

*It is possible that sometime between 6:30 and 7:00 PM immediately prior to this meeting, during breaks, and directly after the meeting, a majority of the Governing Body may be present in the Council Chambers or the lobby of City Hall. No one is excluded from these areas during these times. Video of this meeting can be streamed on [www.belaireks.gov](http://www.belaireks.gov) and on YouTube. Please make sure all cell phones and other electronics are turned off and put away.*

## CITY OF BEL AIRE MUNICIPAL ORDINANCE

ORDINANCE NO. [ ]

### SECTION 1 GENERAL PROVISIONS

#### 1.1 Purpose and Policy

This ordinance sets forth uniform requirements for Users of the Sanitary Sewer Conveyance System for the City of Bel Aire and enables the City to comply with all applicable State and Federal laws, including the Clean Water Act (33 United States Code [U.S.C.] section 1251 et seq.) and the General Pretreatment Regulations (Title 40 of the *Code of Federal Regulations* [CFR] Part 403). The objectives of this ordinance are:

- A. To prevent the introduction of pollutants into the Publicly Owned Treatment Works that will interfere with its operation;
- B. To prevent the introduction of pollutants into the Publicly Owned Treatment Works that will pass through the Publicly Owned Treatment Works, inadequately treated, into receiving waters, or otherwise be incompatible with the Publicly Owned Treatment Works;
- C. To protect both Publicly Owned Treatment Works personnel who may be affected by wastewater and sludge in the course of their employment and the general public;
- D. To promote reuse and recycling of industrial wastewater and sludge from the Publicly Owned Treatment Works wastewater plant; generated by industries served by the City Sanitary Sewer Conveyance System
- E. To enable the City to comply with the National Pollutant Discharge Elimination System permit conditions, sludge use and disposal requirements, and any other Federal or State laws to which the Publicly Owned Treatment Works is subject.

This ordinance shall apply to all Users of the City of Bel Aire Sanitary Sewer Conveyance System.

#### 1.2 Administration

Except as otherwise provided herein, The City Engineer shall administer, implement, and enforce the provisions of this ordinance. Any powers granted to, or duties imposed upon The City Engineer may be delegated by The City Engineer to a duly authorized City employee.

**1.3 Abbreviations**

The following abbreviations, when used in this ordinance, shall have the designated meanings:

BOD – Biochemical Oxygen Demand  
BMP – Best Management Practice  
CFR – *Code of Federal Regulations*  
CIU – Categorical Industrial User  
COD – Chemical Oxygen Demand  
EPA – U.S. Environmental Protection Agency  
gpd – gallons per day  
IU – Industrial User  
mg/l – milligrams per liter  
NPDES – National Pollutant Discharge Elimination System  
POTW – Publicly Owned Treatment Works  
RCRA – Resource Conservation and Recovery Act  
SIU – Significant Industrial User  
TSS – Total Suspended Solids  
U.S.C. – United States Code

**1.4 Definitions**

Unless a provision explicitly states otherwise, the following terms and phrases, as used in this ordinance, shall have the meanings hereinafter designated.

A. Act or “the Act.” The Federal Water Pollution Control Act, also known as the Clean Water Act, as amended, 33 U.S.C. section 1251 et seq.

B. Approval Authority The Kansas Department of Health and Environment (KDHE); it shall mean the Director of Environment of KDHE

C. Authorized or Duly Authorized Representative of the User.

(1) If the User is a corporation:

(a) The president, secretary, treasurer, or a vice-president of the corporation in charge of a principal business function, or any other person who performs similar policy or decision-making functions for the corporation; or

(b) The Engineer of one or more manufacturing, production, or operating facilities, provided the Engineer is authorized to make management decisions that govern the operation of the regulated facility including having the explicit or implicit duty of making major capital investment recommendations, and initiate and direct other comprehensive measures to assure long-term environmental compliance with environmental laws and regulations; can ensure that the necessary systems are established or actions taken to gather complete and accurate information for individual wastewater discharge permit requirements;

and where authority to sign documents has been assigned or delegated to the Engineer in accordance with corporate procedures.

(2) If the User is a partnership or sole proprietorship: a general partner or proprietor, respectively.

(3) If the User is a Federal, State, or local governmental facility: a director or highest official appointed or designated to oversee the operation and performance of the activities of the government facility, or their designee.

(4) The individuals described in paragraphs 1 through 3, above, may designate a Duly Authorized Representative if the authorization is in writing, the authorization specifies the individual or position responsible for the overall operation of the facility from which the discharge originates or having overall responsibility for environmental matters for the company, and the written authorization is submitted to the City.

D. Biochemical Oxygen Demand or BOD. The quantity of oxygen utilized in the biochemical oxidation of organic matter under standard laboratory procedures for five (5) days at 20 degrees centigrade, usually expressed as a concentration (e.g., mg/l).

E. Best Management Practices or BMPs. Schedules of activities, prohibitions of practices, maintenance procedures, and other management practices to implement the prohibitions listed in Section 2.1 A and B [40 CFR 403.5(a)(1) and (b)]. BMPs include treatment requirements, operating procedures, and practices to control plant site runoff, spillage or leaks, sludge or waste disposal, or drainage from raw materials storage, or sector control programs to control pollutants from specific industrial users in place of identified categorical or effluent standards. BMPs shall be considered local limits and Pretreatment Standards for the purposes of these Pretreatment Regulations and Section 307(d) of the Act and as specified at 40 CFR 403.5(c)(4)

F. Categorical Pretreatment Standard or Categorical Standard. Any regulation containing pollutant discharge limits promulgated by EPA in accordance with sections 307(b) and (c) of the Act (33 U.S.C. section 1317) that apply to a specific category of Users and that appear in 40 CFR Chapter I, Subchapter N, Parts 405-471.

G. Categorical Industrial User. An Industrial User subject to a categorical Pretreatment Standard or categorical Standard.

H. City. The City of Bel Aire

I. City Engineer: The person designated by the City to supervise the operation of the POTW, and who is charged with certain duties and responsibilities by this ordinance. The term also means a Duly Authorized Representative of the City Engineer.

J. Chemical Oxygen Demand or COD. A measure of the oxygen required to oxidize all compounds, both organic and inorganic, in water.

K. Control Authority. The City of Bel Aire

L. Environmental Protection Agency or EPA. The U.S. Environmental Protection Agency or, where appropriate, the Region VII Water Management Division Director, the Region VII Administrator, or other duly authorized official of said agency.

M. Existing Source. Any source of discharge that is not a “New Source.”

N. Grab Sample. A sample that is taken from a wastestream without regard to the flow in the wastestream and over a period of time not to exceed fifteen (15) minutes.

O. Indirect Discharge or Discharge. The introduction of pollutants into the POTW from any nondomestic source.

P. Industrial User, IU or User. A source of indirect discharge.

Q. Interference. A discharge that, alone or in conjunction with a discharge or discharges from other sources, inhibits or disrupts the POTW, its treatment processes or operations or its sludge processes, use or disposal; and therefore, is a cause of a violation of [the City’s] NPDES permit or of the prevention of sewage sludge use or disposal in compliance with any of the following statutory/regulatory provisions or permits issued thereunder, or any more stringent State or local regulations: section 405 of the Act; the Solid Waste Disposal Act, including Title II commonly referred to as the Resource Conservation and Recovery Act (RCRA); any State regulations contained in any State sludge management plan prepared pursuant to Subtitle D of the Solid Waste Disposal Act; the Clean Air Act; the Toxic Substances Control Act; and the Marine Protection, Research, and Sanctuaries Act.

R. KDHE. the Kansas Department of Health and Environment and any successor departments or agencies.

S. Local Limit. Specific discharge limits or best management practices developed and enforced by the City upon industrial or commercial facilities to implement the general and specific discharge prohibitions listed in 40 CFR 403.5(a)(1) and (b).

T. Medical Waste. Isolation wastes, infectious agents, human blood and blood products, pathological wastes, sharps, body parts, contaminated bedding, surgical wastes, potentially contaminated laboratory wastes, and dialysis wastes.

U. New Source.

(1) Any building, structure, facility, or installation from which there is (or may be) a discharge of pollutants, the construction of which commenced after the publication of proposed Pretreatment Standards under section 307(c) of the Act that will be applicable to such source if such Standards are thereafter promulgated in accordance with that section, provided that:

(a) The building, structure, facility, or installation is constructed at a site at which no other source is located; or

(b) The building, structure, facility, or installation totally replaces the process or production equipment that causes the discharge of pollutants at an Existing Source; or

(c) The production or wastewater generating processes of the building, structure, facility, or installation are substantially independent of an Existing Source at the same site. In determining whether these are substantially independent, factors such as the extent to which the new facility is integrated with the existing plant, and the extent to which the new facility is engaged in the same general type of activity as the Existing Source, should be considered.

(2) Construction on a site at which an Existing Source is located results in a modification rather than a New Source if the construction does not create a new building, structure, facility, or installation meeting the criteria of Section (1)(b) or (c) above but otherwise alters, replaces, or adds to existing process or production equipment.

(3) Construction of a New Source as defined under this paragraph has commenced if the owner or operator has:

(a) Begun, or caused to begin, as part of a continuous onsite construction program

(i) any placement, assembly, or installation of facilities or equipment; or

(ii) significant site preparation work including clearing, excavation, or removal of existing buildings, structures, or facilities which is necessary for the placement, assembly, or installation of new source facilities or equipment; or

(b) Entered into a binding contractual obligation for the purchase of facilities or equipment which are intended to be used in its operation within a reasonable time. Options to purchase or contracts which can be terminated or modified without substantial loss, and contracts for feasibility, engineering, and design studies do not constitute a contractual obligation under this paragraph.

U. Noncontact Cooling Water. Water used for cooling that does not come into direct contact with any raw material, intermediate product, waste product, or finished product.

V. Pass Through. A discharge which exits the POTW into waters of the United States in quantities or concentrations which, alone or in conjunction with a discharge or discharges from other sources, is a cause of a violation of any requirement of the NPDES permit, including an increase in the magnitude or duration of a violation.

W. Person. Any individual, partnership, co-partnership, firm, company, corporation, association, joint stock company, trust, estate, governmental entity, or any other legal entity; or their legal representatives, agents, or assigns. This definition includes all Federal, State, and local governmental entities.

X. pH. A measure of the acidity or alkalinity of a solution, expressed in standard units.

Y. Pollutant. Dredged spoil, solid waste, incinerator residue, filter backwash, sewage, garbage, sewage sludge, munitions, Medical Wastes, chemical wastes, biological materials, radioactive materials, heat, wrecked or discarded equipment, rock, sand, cellar dirt, municipal, agricultural, and industrial wastes, and certain characteristics of wastewater (e.g., pH, temperature, TSS, turbidity, color, BOD, COD, toxicity, or odor).

Z. Pretreatment. The reduction of the amount of pollutants, the elimination of pollutants, or the alteration of the nature of pollutant properties in wastewater prior to, or in lieu of, introducing such pollutants into the POTW. This reduction or alteration can be obtained by physical, chemical, or biological processes; by process changes; or by other means, except by diluting the concentration of the pollutants unless allowed by an applicable Pretreatment Standard.

AA. Pretreatment Requirements. Any substantive or procedural requirement related to pretreatment imposed on a User, other than a Pretreatment Standard.

BB. Pretreatment Standards or Standards. Pretreatment Standards shall mean prohibited discharge standards and categorical Pretreatment Standards, and Local Limits, including best management practices.

CC. Prohibited Discharge Standards or Prohibited Discharges. Absolute prohibitions against the discharge of certain substances; these prohibitions appear in Section 2.1 of this ordinance.

DD. Publicly Owned Treatment Works or POTW. A treatment works, as defined by section 212 of the Act (33 U.S.C. section 1292), which is jointly owned by the cities of Bel Aire and Park City known as Chisholm Creek Utility Authority, a regional sewer district (as defined by Section 502(4) of the Clean Water Act. This definition includes any devices or systems used in the collection, storage, treatment, recycling, and reclamation of sewage or industrial wastes of a liquid nature and any conveyances, which convey wastewater to a treatment plant.

EE. POTW Treatment Plant, or Wastewater Treatment Plant. That portion of the POTW which is designed to provide treatment (including recycling and reclamation) of municipal sewage and industrial waste.

FF. Septic Tank Waste. Any sewage from holding tanks such as vessels, chemical toilets, campers, trailers, and septic tanks.

GG. Sewage. A combination of the water-carried wastes from residences, business buildings, institutions, and industrial establishments which is routed to the City sanitary sewer system.

---

HH. Significant Industrial User (SIU).

Except as provided in paragraphs (3) and (4) of this Section, a Significant Industrial User is:

(1) An Industrial User subject to categorical Pretreatment Standards; or

(2) An Industrial User that:

(a) Discharges an average of twenty-five thousand (25,000) gpd or more of process wastewater to the POTW (excluding sanitary, noncontact cooling and boiler blowdown wastewater);

(b) Contributes a process wastestream which makes up five (5) percent or more of the average dry weather hydraulic or organic capacity of the POTW treatment plant; or

(c) Is designated as such by the City on the basis that it has a reasonable potential for adversely affecting the POTW's operation or for violating any Pretreatment Standard or Requirement.

(3) The City may determine that an Industrial User subject to categorical Pretreatment Standards is a Non-Significant Categorical Industrial User rather than a Significant Industrial User on a finding that the Industrial User never discharges more than 100 gallons per day (gpd) of total categorical wastewater (excluding sanitary, non-contact cooling and boiler blowdown wastewater, unless specifically included in the Pretreatment Standard) and the following conditions are met:

(a) The Industrial User, prior to City's finding, has consistently complied with all applicable categorical Pretreatment Standards and Requirements;

(b) The Industrial User annually submits the certification statement required in Section 6.14 B [see 40 CFR 403.12(q)], together with any additional information necessary to support the certification statement; and

(c) The Industrial User never discharges any untreated concentrated wastewater.

(4) Upon a finding that a User meeting the criteria in Subsection (2) of this part has no reasonable potential for adversely affecting the POTW's operation or for violating any Pretreatment Standard or Requirement, the City may at any time, on its own initiative or in response to a petition received from an Industrial User, and in accordance with procedures in 40 CFR 403.8(f)(6), determine that such User should not be considered a Significant Industrial User.

II. Slug Load or Slug Discharge. Any discharge at a flow rate or concentration, which could cause a violation of the prohibited discharge standards in Section 2.1 of this ordinance. A Slug Discharge is any discharge of a non-routine, episodic nature, including but not limited to an accidental spill or a non-customary batch discharge, which has a reasonable potential to cause Interference or Pass Through, or in any other way violate the POTW's regulations, Local Limits or Permit conditions.



JJ. Storm Water. Any flow occurring during or following any form of natural precipitation, and resulting from such precipitation, including snowmelt.

KK. Total Suspended Solids or Suspended Solids. The total suspended matter that floats on the surface of, or is suspended in, water, wastewater, or other liquid, and that is removable by laboratory filtering.

LL. Wastewater. Liquid and water-carried industrial wastes and sewage from residential dwellings, commercial buildings, industrial and manufacturing facilities, and institutions, whether treated or untreated, which are contributed to the POTW.

## SECTION 2 GENERAL SEWER USE REQUIREMENTS

### 2.1 Prohibited Discharge Standards

A. General Prohibitions. No User shall introduce or cause to be introduced into the POTW any pollutant or wastewater which causes Pass Through or Interference. These general prohibitions apply to all Users of the POTW whether or not they are subject to categorical Pretreatment Standards or any other National, State, or local Pretreatment Standards or Requirements.

B. Specific Prohibitions. No User shall introduce or cause to be introduced into the POTW the following pollutants, substances, or wastewater:

(1) Pollutants which create a fire or explosive hazard in the POTW, including, but not limited to, wastestreams with a closed-cup flashpoint of less than 140 degrees F (60 degrees C) using the test methods specified in 40 CFR 261.21;

(2) Wastewater having a pH less than 5.0 or more than 12.5, or otherwise causing corrosive structural damage to the POTW or equipment;

(3) Solid or viscous substances in amounts which will cause obstruction of the flow in the POTW resulting in Interference : Solid or viscous Pollutants shall not be discharged whole or ground by garbage grinders. This includes, but is not limited to ashes, cinders, sand, mud, straw, shavings, metal, glass, rags, mopheads, feathers, tar, plastics, wood, underground garbage, paunch manure, hair and flesh, entrails, including solids from food service establishments, such as oil and grease, paper and cloth wipes, dishes, utensils, cups, and liquid containers.

(4) Pollutants, including oxygen-demanding pollutants (BOD, etc.), released in a discharge at a flow rate and/or pollutant concentration which, either singly or by interaction with other pollutants, will cause Interference with the POTW;

(5) Wastewater having a temperature that inhibits biological activity in the treatment plant resulting in interference, but in no case, wastewater from an indirect discharge with a temperature exceeding one hundred fifty degrees Fahrenheit (sixty-five degrees Celsius) or which results in exceeding the wastewater temperature of one hundred- and four-degrees Fahrenheit (forty degrees Celsius) at the treatment plant.

(6) Petroleum oil, nonbiodegradable cutting oil, or products of mineral oil origin, in amounts that will cause Interference or Pass Through.

(7) Pollutants which result in the presence of toxic gases, vapors, or fumes within the POTW in a quantity that may cause acute worker health and safety problems.

(8) Trucked or hauled pollutants, except at discharge points designated by the City Engineer in accordance with Section 3.4 of this ordinance.

(9) Noxious or malodorous liquids, gases, solids, or other wastewater which, either singly or by interaction with other wastes, are sufficient to create a public nuisance or a hazard to life, or to prevent entry into the sewers for maintenance or repair;

(10) Wastewater which imparts color which cannot be removed by the treatment process, such as, but not limited to, dye wastes and vegetable tanning solutions, which consequently imparts color to the treatment plant's effluent, thereby violating the NPDES permit;

(11) Wastewater containing any radioactive wastes or isotopes except in compliance with applicable State or Federal regulations;

(12) Storm Water, surface water, ground water, artesian well water, roof runoff, subsurface drainage, swimming pool drainage, condensate, deionized water, Noncontact Cooling Water, and unpolluted wastewater, unless specifically authorized by [the City Engineer];

(13) Sludges, screenings, or other residues from the pretreatment of industrial wastes;

(14) Medical Wastes, except as specifically authorized in writing by the City Engineer

(15) Wastewater causing, alone or in conjunction with other sources, the treatment plant's effluent to fail toxicity test;

(16) Detergents, surface-active agents, or other substances which that might cause excessive foaming in the POTW;

(17) Fats, oils, or greases of animal or vegetable origin, emulsified or not, containing substances which may solidify, or become viscous, at temperatures between thirty-two degrees Fahrenheit and one hundred fifty degrees Fahrenheit (zero degrees to sixty-five degrees Centigrade), in quantities determined by the City Engineer that have a deleterious effect upon the POTW conveyance system, processes, and/or equipment, or in quantities which will pass through the POTW to the receiving waters, or impact the storage or disposal of the POTW biosolids. In addition, it is prohibited to discharge these substances in quantities that cause a sewer line blockage resulting in untreated sewage discharging to waters of the United States. The discharge must not be in quantities that present an imminent endangerment to the health and welfare of persons, or otherwise create or constitute a public nuisance.

(18) Wastewater causing two readings on an explosion hazard meter at the point of discharge into the POTW, or at any point in the POTW, of more than five percent (5 %) or any single reading over ten percent (10 %) of the Lower Explosive Limit of the meter.

19. Any garbage that has not been properly shredded. Garbage grinders may be connected to sanitary sewers from homes, hotels, institutions, restaurants, hospitals, catering establishment, or similar places where garbage originates from the preparation of food in kitchens for the purpose of consumption on the premises or when served by caterers. However, garbage grinders shall only be used to grind 11 small amounts of garbage incidental to cleaning plates, cookware, etc. and not to dispose of large quantities of waste. Waste must be scraped into a garbage can prior to cleaning;

20. Unusual Biochemical Oxygen Demand (BOD), Chemical Oxygen Demand (COD), or Total Suspended Solids (TSS) in quantities as to constitute a significant additional load on the Wastewater Treatment Plant.

21. Wastewater containing Pollutants which are not amenable to transport, treatment or reduction in concentration by the POTW and POTW Treatment Plant processes employed, or are amenable to treatment only to such a degree that the POTW Treatment Plant effluent cannot meet the requirements of regulatory agencies having jurisdiction over discharge of effluent to the receiving waters;

22. Wastewater which, by interaction with other wastewater in the POTW, releases obnoxious gases, forms suspended solids which interfere with the collection system, or creates a condition deleterious to structures and treatment processes.

23. Liquid Wastes from chemical toilets, trailers, campers, or other recreational vehicles which have been collected or held in tanks or other containers shall not be discharged into the POTW except at locations authorized by the City to collect such wastes.

24. Pollutants, substances, or Wastewater prohibited by this subsection shall not be processed or stored in such a manner that they could be discharged to the POTW.

## **2.2 National Categorical Pretreatment Standards**

Categorical Industrial Users (CIUs) must comply with applicable Categorical Pretreatment Standards found at 40 CFR Chapter I, Subchapter N, Parts 405–471. In order to facilitate notification from the POTW to the Control Authority regarding discharges from CIUs, CIUs shall notify the City at least 90 days prior to discharge. CIUs also have additional sampling, reporting, and notification requirements to the Control Authority.

## **2.3 Site-Specific Limits**

The POTW may establish additional site-specific pollutant limits, Best Management Practices, or additional Pretreatment Requirements when, in the judgment of the City, such limitations are necessary to implement the provisions of this Chapter, including the Discharge prohibitions in subsection 2.1. These additional limits shall be public noticed prior to implementation by the City.

## **2.4 Best Management Practices (BMPs)**

The POTW may develop BMPs to implement the prohibitions of subsection 2.1 of this Chapter. BMPs shall be considered Pretreatment Standards for purposes of this Chapter and section 307(d) of the Act. The City may establish specific sector control programs for Industrial Users to control specific pollutants, as necessary, to meet the objectives of this Chapter. Pollutants subject to these sector control programs will generally be controlled using BMPs as determined by the City. These sector control programs shall not limit the City's authority to inspect, sample, require reports, enforce, or otherwise carry out its responsibility under this Chapter. The specific sector control program BMPs and requirements shall be developed and documented in a policy, which shall be public noticed.

Elements of a BMP-based sector control program may include, but are not limited to the following:

1. Installation of appropriately-sized treatment;
2. Requirements for prohibitions on certain practices or discharges;
3. Requirements for the operation and maintenance of treatment equipment; and
4. Procedures for compliance certification, reporting and records retention.

The City Engineer may develop Best Management Practices (BMPs), by ordinance or in individual wastewater discharge permits to implement any City requirements of Section 2.1.

---

**2.5 City's Right of Revision**

The City reserves the right to establish, by ordinance or in individual wastewater discharge permits more stringent Standards or Requirements on discharges to the POTW consistent with the purpose of this ordinance.

**2.6 Dilution**

No User shall ever increase the use of process water, or in any way attempt to dilute a discharge, as a partial or complete substitute for adequate treatment to achieve compliance with a discharge limitation unless expressly authorized by an applicable Pretreatment Standard or Requirement. The City Engineer may impose mass limitations on Users who are using dilution to meet applicable Pretreatment Standards or Requirements, or in other cases when the imposition of mass limitations is appropriate.

**SECTION 3 PRETREATMENT OF WASTEWATER****3.1 Pretreatment Facilities**

Users shall provide wastewater treatment as necessary to comply with this ordinance and shall achieve compliance prior to discharge. Any facilities necessary for compliance shall be provided, operated, and maintained at the User's expense. Detailed plans describing such facilities and operating procedures shall be submitted to the City Engineer for review and shall be acceptable to [the City Engineer before such facilities are constructed. The review of such plans and operating procedures shall in no way relieve the User from the responsibility of modifying such facilities as necessary to produce a discharge acceptable to the City under the provisions of this ordinance.

**3.2 Additional Pretreatment Measures**

A. Whenever deemed necessary, the City Engineer may require Users to restrict their discharge during peak flow periods, designate that certain wastewater be discharged only into specific sewers, relocate and/or consolidate points of discharge, separate sewage wastestreams from industrial wastestreams, and such other conditions as may be necessary to protect the POTW and determine the User's compliance with the requirements of this ordinance.

B. The City Engineer may require any person discharging into the POTW to install and maintain, on their property and at their expense, a suitable storage and flow-control facility to ensure equalization of flow.

C. Grease, oil, and sand interceptors shall be provided when, in the opinion of the City Engineer, they are necessary for the proper handling of wastewater containing excessive amounts of grease and oil, or sand; except that such interceptors shall not be required for residential users. All interception units shall be of a type and capacity approved by the

City Engineer, shall be so located to be easily accessible for cleaning and inspection. Such interceptors shall be inspected, cleaned, and repaired by the User at their expense.

D. Users with the potential to discharge flammable substances may be required to install and maintain an approved combustible gas detection meter.

E. The City Engineer may require any person discharging into the POTW to install at the owner's or operator's own expense suitable monitoring facilities or equipment which isolates appropriate wastewater discharges into the wastewater system and facilitates accurate observation, sampling and measurement of discharges. The equipment shall be maintained in proper working order and kept safe and accessible without restriction to POTW personnel at all times. Where practical, the monitoring equipment shall be located and maintained on the Industrial User's premises outside of the building.

### 3.3 Accidental Discharge/Slug Discharge Control Plans

Each Industrial User shall provide protection from accidental discharges and Slug Loads of pollutants resulting in harm to the POTW. Facilities to prevent the discharge of spills or Slug Loads shall be provided and maintained at the Industrial User's expense.

The City Engineer shall evaluate whether a facility needs an accidental discharge/slug discharge control plan or other action to control Slug Discharges. [The City Engineer] may require any User to develop, submit for approval, and implement such a plan or take such other action that may be necessary to control Slug Discharges. Alternatively, [the City Engineer may develop such a plan for any User. An accidental discharge/slug discharge control plan shall address, at a minimum, the following:

- A. Detailed plans (schematics) showing facility layout and plumbing representative of operating procedures.
- B. Description of contents and volumes of any process tanks;
- C. Description of discharge practices, including non-routine batch discharges;
- D. Listing of stored chemicals, including location and volumes;
- E. Procedures for immediately notifying the POTW of any spill or Slug Discharge. It is the responsibility of the Industrial User to comply with all reporting requirements;
- F. Procedures to prevent adverse impact from any accidental or Slug Discharge. Such procedures include, but are not limited to, inspection and maintenance of storage areas, handling, and transfer of materials, loading and unloading operations, control of plant site runoff, worker training, building of containment structures or equipment, measures for containing toxic organic pollutants, including solvents, and/or measures and equipment for emergency response.

### 3.4 Hauled Wastewater

A. The POTW prohibits the discharge of trucked/hauled septic tank waste, industrial waste, and RV waste to the City sanitary sewer collection system, unless the City Engineer specifically grants a permit to the discharger. Such a permit shall be issued pursuant to rules and that address, among other items, preservation of sewer capacity for

its intended purpose of handling sanitary sewage, protection of the sanitary sewer system from harmful solutions, protection of the health of employees and the public, and proper functioning of the City's sanitary sewer system and its appurtenances.

B. Trucked/Hauled waste may be discharged into the sanitary sewer system only at locations designated by the City, and at such times established by the City. Such waste shall not violate any discharge conditions or requirements established by the POTW. The City may require the following:

1. Septic tank waste haulers to obtain individual wastewater Discharge permits.
2. The POTW may collect samples of each hauled load to ensure compliance with applicable Pretreatment Standards and Requirements.
3. The POTW may require the industrial waste hauler to provide a waste analysis of any load prior to Discharge.

Any Person discharging septic tank waste and industrial waste must provide a waste-tracking form for every load. This form shall include, at a minimum, the name and address of the waste hauler (individual person and company), permit number (if applicable), truck identification, names and addresses of sources of waste, and volume and characteristics of waste. The form shall identify the type of industry, known or suspected waste constituents, and whether any wastes are RCRA hazardous wastes. —

C. RV Disposal Stations: The POTW may allow RV disposal sites in its service area if the quality or quantity of the RV waste does not impact the POTW, including the collection system. The POTW may require RV disposal sites in the service area to ensure adequate controlled access to its disposal site including locked access, sign-in records for persons discharging from the RV, record keeping by the RV disposal site, and other information, as deemed appropriate by the City Engineer.

## SECTION 4 NOTIFICATION AND REPORTING REQUIREMENTS

### **4.1 — Industrial User Questionnaire**

If the POTW deems it necessary to assure compliance with the provisions of this Chapter, any IU of the POTW may be required to submit a Wastewater Discharge permit application, questionnaire, or other reports and notifications in a format and timeframe specified by the POTW. In cases where the Pretreatment Standard requires compliance with a BMP or pollution prevention alternative, the Industrial User must submit documentation required by the POTW or the Pretreatment Standards to determine the compliance status of the Industrial User. Any Industrial User subject to this reporting requirement shall submit a completed report no later than thirty (30) days after receipt of the notification and appropriate forms.

### **4.2 — Notification of Change in Discharge**

All Industrial Users shall promptly notify the POTW in advance of any substantial change in the volume or character of pollutants in their discharge, including the listed or characteristic hazardous wastes for which the Industrial User has submitted initial notification under 40 CFR

section 403.12(p). Additionally, significant Industrial Users are required to notify the POTW immediately of any changes in their facilities affecting potential for a Slug Discharge.

#### **4.3 — Notification of Hazardous Waste Discharge**

Industrial users shall notify the City, the EPA Regional Waste Management Division Director, and the State hazardous waste authorities in writing of any Discharge into the POTW of any substance which, if otherwise disposed of, would be considered a hazardous waste under 40 CFR section 261, (RCRA). Each Industrial User shall notify the POTW in advance of any substantial change to such discharge. The specific information required to be reported and the time frames in which it is to be reported are found at 40 CFR section 403.12§15

#### **4.4 — Report of Potential Problems**

A. In the case of any discharge, including, but not limited to, spills, accidental discharges, discharges of a non-routine, episodic nature, a non-customary batch discharge, a Slug discharge or a discharge that may cause potential problems for the POTW, the Industrial User shall immediately telephone and notify the POTW of the incident. This notification shall include:

1. Name of the facility;
2. Location of the facility;
3. Name of the caller;
4. Date and time of the discharge;
5. Date and time discharge was halted;
6. Location of the discharge;
7. Type of waste;
8. Estimated volume of the discharge;
9. Estimated concentration of pollutants in the discharge;
10. Corrective actions taken to halt the discharge; and
11. Method of disposal, if applicable.

B. Within five (5) working days following such discharge, the Industrial User shall, unless waived by the City, submit a detailed written report describing the cause(s) of the Discharge and the measures to be taken by the Industrial User to prevent similar future occurrences. Such notification shall not relieve the Industrial User of any expense, loss, damage, or other liability which might be incurred as a result of damage to the POTW, natural resources, or any other damage to person or property; nor shall such notification relieve the Industrial User of any fines, penalties, or other liability which may be imposed pursuant to this Chapter.

#### **4.5 — Authorized Signature for Reports**

All reports and questionnaires required to be submitted by the above provisions shall bear the signature of an Authorized Representative of the discharging entity and shall include the following certification statement as set forth in 40 CFR section 403.6(a)(2)(ii): "I certify under penalty of law that this document and all attachments were prepared under my direction or supervision in accordance with a system designed to ensure that qualified personnel properly gather and evaluate the information submitted. Based on my inquiry of the person or persons who manage the system or the persons directly responsible for gathering the information, the



information submitted is, to the best of my knowledge and belief, true, accurate, and complete. I am aware that there are significant penalties for submitting false information, including the possibility of a fine and imprisonment for knowing violations."

#### SECTION 5 RIGHT OF ENTRY: INSPECTION AND SAMPLING

The City Engineer shall have the right to enter the premises of any User to determine whether the User is complying with all requirements of this ordinance and any individual wastewater discharge permit or order issued hereunder. Users shall allow the City Engineer ready access to all parts of the premises for the purposes of inspection, sampling, records examination and copying, and the performance of any additional duties, including the use of digital photography to gather information.

A. Where a User has security measures in force which require proper identification and clearance before entry into its premises, the User shall make necessary arrangements with its security guards so that, upon presentation of suitable identification, the City Engineer shall be permitted to enter without delay for the purposes of performing specific responsibilities.

B. The City Engineer shall have the right to set up on the User's property, or require installation of, such devices as are necessary to conduct sampling and/or metering of the User's operations.

C. The City Engineer may require the User to install monitoring equipment as necessary. The facility's sampling and monitoring equipment shall be maintained at all times in a safe and proper operating condition by the User at its own expense. All devices used to measure wastewater flow and quality shall be calibrated [insert desired frequency] to ensure their accuracy.

D. Any temporary or permanent obstruction to safe and easy access to the facility to be inspected and/or sampled shall be promptly removed by the User at the written or verbal request of the City Engineer and shall not be replaced. The costs of clearing such access shall be borne by the User.

E. Unreasonable delays in allowing the City Engineer access to the User's premises shall be a violation of this ordinance.

## SECTION 6 CONFIDENTIAL BUSINESS INFORMATION

All information and data on a User obtained from the User, person, POTW including but not limited to, reports, surveys, monitoring programs, and from the City Engineer's inspection and sampling activities, shall be available to the public without restriction, unless the User specifically requests, and is able to demonstrate to the satisfaction of the City Engineer, that the release of such information would divulge information, processes, or methods of production entitled to protection as trade secrets under applicable State law. Any such request must be asserted at the time of submission of the information or data. When requested and demonstrated by the User furnishing a report that such information should be held confidential, the portions of a report which might disclose trade secrets or secret processes shall not be made available for inspection by the public but shall be made available immediately upon request to governmental agencies for uses related to the NPDES program or pretreatment program, and in enforcement proceedings involving the person furnishing the report. Wastewater constituents and characteristics and other effluent data, as defined at 40 CFR 2.302 shall not be recognized as confidential information and shall be available to the public without restriction.

## SECTION 7 ADMINISTRATIVE/JUDICIAL ENFORCEMENT REMEDIES

### 7.1 Notification of Violation

When the City Engineer finds that a User has violated, or continues to violate, any provision of this ordinance, or order issued hereunder, or any other Pretreatment Standard or Requirement, the City Engineer may serve upon that User a written Notice of Violation. Within five (5) working days of the receipt of such notice, an explanation of the violation and a plan for the satisfactory correction and prevention thereof, to include specific required actions, shall be submitted by the User to the City Engineer. Submission of such a plan in no way relieves the User of liability for any violations occurring before or after receipt of the Notice of Violation. Nothing in this Section shall limit the authority of the City Engineer to take any action, including emergency actions or any other enforcement action, without first issuing a Notice of Violation.

### 7.2 Consent/ Administrative Orders

When the City finds that an Industrial User has violated, or continues to violate, any provision of this Chapter, or order issued hereunder, or any other Pretreatment Standard or Requirement, the City may issue an Administrative Order to the Industrial User responsible for the discharge directing that the Industrial User immediately come into compliance or within a time specified by the City.

The City Engineer may enter into Consent Orders, assurances of compliance, or other similar documents establishing an agreement with any User responsible for noncompliance. Such documents shall include specific action to be taken by the User to correct the noncompliance within the time period specified by the document. Such documents shall have the same force and effect as the administrative orders. and shall be judicially enforceable.

If the Industrial User does not come into compliance within the time provided, sewer service may be discontinued unless adequate treatment facilities, devices, or other related appurtenances

are installed and properly operated. Compliance orders also may contain other requirements to address the noncompliance, including additional self-monitoring and management practices designed to minimize the amount of pollutants discharged into the sewer. A compliance order may not extend the deadline for compliance established for a Pretreatment Standard or Requirement, nor does a compliance order relieve the Industrial User of liability for any violation, including any continuing violation during the time it takes the Industrial User to come into compliance. Issuance of a compliance order shall not be a bar against, or a prerequisite for, taking any other action against the Industrial User.

### 7.3 Suspension of Service

The City may suspend water service and/or wastewater treatment service in order to stop an actual or threatened Discharge which presents or may present an imminent or substantial endangerment to the health or welfare of persons, the environment, causes Pass Through or Interference, causes the POTW to violate any condition of its NPDES Permit, or for violations of this Chapter. Any IU notified of a suspension of the water service and/or wastewater treatment service shall immediately stop or eliminate the Discharge. In the event of a failure of the person to comply voluntarily with the suspension order, the City shall take such steps as deemed necessary including immediate physical severance of the sewer connection, to prevent or minimize damage to the POTW system or endangerment to individuals or the environment.

### 7.4 Show Cause Hearing

The City Engineer may order a User which has violated, or continues to violate, any provision of this ordinance, order issued hereunder, or any other Pretreatment Standard or Requirement, to appear before the City Engineer and show cause why the proposed enforcement action should not be taken. Notice shall be served on the User specifying the time and place for the meeting, the proposed enforcement action, the reasons for such action, and a request that the User show cause why the proposed enforcement action should not be taken. The notice of the meeting shall be served personally or by registered or certified mail (return receipt requested) at least 15 (fifteen) days prior to the hearing. Such notice may be served on any Authorized Representative of the User as defined in Section 1.4 C and required by Section 4.7 A. The Show Cause Hearing board shall consist of The City Manager, The City Engineer, The Public Works Director, The Chief Building Inspector, or their designees, and a representative of the Utility Advisory Board.

A show cause hearing shall not be a bar against, or prerequisite for, taking any other action against the User.

### 7.5 Compliance Orders

When the City Engineer finds that a User has violated, or continues to violate, any provision of this ordinance, in order issued hereunder, or any other Pretreatment Standard or Requirement, the City Engineer may issue an order to the User responsible for the discharge directing that the User come into compliance within a specified time. If the User does not come into compliance within the time provided, sewer service may be discontinued unless adequate treatment facilities, devices, or other related appurtenances are installed and properly operated. Compliance orders also may contain other requirements to address the noncompliance, including additional self-monitoring and management practices designed to minimize the amount of pollutants

discharged to the sewer. A compliance order may not extend the deadline for compliance established for a Pretreatment Standard or Requirement, nor does a compliance order relieve the User of liability for any violation, including any continuing violation. Issuance of a compliance order shall not be a bar against, or a prerequisite for, taking any other action against the User.

#### 7.6 Cease and Desist Orders

When the City Engineer finds that a User has violated, or continues to violate, any provision of this ordinance, or order issued hereunder, or any other Pretreatment Standard or Requirement, or that the User's past violations are likely to recur, the City Engineer may issue an order to the User directing it to cease and desist all such violations and directing the User to:

- A. Immediately comply with all requirements; and
- B. Take such appropriate remedial or preventive action as may be needed to properly address a continuing or threatened violation, including halting operations and/or terminating the discharge. Issuance of a cease-and-desist order shall not be a bar against, or a prerequisite for, taking any other action against the User.

#### 7.8 Administrative Fines

A. When the City Engineer finds that a User has violated, or continues to violate, any provision of this ordinance, an individual wastewater discharge permit or order issued hereunder, or any other Pretreatment Standard or Requirement, the City Engineer may fine such User in an amount not to exceed \$1,000 (one-thousand dollars). Such fines shall be assessed on a per-violation, per-day basis. In the case of monthly or other long-term average discharge limits, fines shall be assessed for each day during the period of violation.

B. The POTW may, in addition to fines, collect charges to pay for damage to the POTW, fines issued to the POTW, and any other costs incurred by the POTW as a result of the IU's noncompliance.

C. A lien against the Industrial User's property shall be sought for unpaid charges, fines, and penalties.

D. Users desiring to dispute such fines must file a written request for the City Engineer to reconsider the fine along with full payment of the fine amount within 10 (ten) business days of being notified of the fine. Where a request has merit, the City Engineer may convene a hearing on the matter. In the event the User's appeal is successful, the payment, together with any interest accruing thereto, shall be returned to the User. The City Engineer may add the costs of preparing administrative enforcement actions, such as notices and orders, to the fine.

E. Issuance of an administrative fine shall not be a bar against, or a prerequisite for, taking any other action against the User.

## 7.9 Injunctive Relief

When the City Engineer finds that a User has violated, or continues to violate, any provision of this ordinance, or order issued hereunder, or any other Pretreatment Standard or Requirement, the City Engineer may petition the district court of Sedgwick County, through the City's Attorney for the issuance of a temporary or permanent injunction, as appropriate, which restrains or compels the specific performance of the individual wastewater discharge permit, order, or other requirement imposed by this ordinance on activities of the User. The City Engineer may also seek such other action as is appropriate for legal and/or equitable relief, including a requirement for the User to conduct environmental remediation. A petition for injunctive relief shall not be a bar against, or a prerequisite for, taking any other action against a User.

## 7.10 Remedies Nonexclusive

The remedies provided for in this ordinance are not exclusive. The City Engineer may take any, all, or any combination of these actions against a noncompliant User. Enforcement of pretreatment violations will generally be in accordance with the City's enforcement and penalties described in Chapter 16, Article 6 of the City Code of Ordinances. However, the City Engineer may take other action against any User when the circumstances warrant. Further, the City Engineer is empowered to take more than one enforcement action against any noncompliant User.

## 7.11 Water Supply Severance

Whenever a User has violated or continues to violate any provision of this ordinance, an order issued hereunder, or any other Pretreatment Standard or Requirement, water service to the User may be severed. Service will recommence, at the User's expense, only after the User has satisfactorily demonstrated its ability to comply.

## 7.12 Prohibited Discharge Standards

A User shall have an affirmative defense to an enforcement action brought against it for noncompliance with the general prohibitions in Section 2.1(A) of this ordinance or the specific prohibitions in Sections 2.1(B)(3) through (24) of this ordinance if it can prove that it did not know, or have reason to know, that its discharge, alone or in conjunction with discharges from other sources, would cause Pass Through or Interference and that

- A. the discharge did not change substantially in nature or constituents from the User's prior discharge when the City was regularly in compliance with its NPDES permit, and in the case of Interference, was in compliance with applicable sludge use or disposal requirements.

## SECTION 8 EFFECTIVE DATE

This ordinance shall be in full force and effect immediately following its passage, approval, and publication, as provided by law.

Company Name	Company Address	Survey Sent Y/N	Contact Name: Survey sent to	Date Survey Returned	Send Date of Resubmittal	Date Survey Completed	Comments Follow up Actions
Colorado Premium	3845 N Woodlawn	Y -5/6/21	Tim Bowden	5/17/2021		5/21/2021	
Buzzi Unicem USA	10495 E 53rd N	Y -5/6/21	Zachary Snodgrass	5/12/2021		5/21/2021	
IT Source	3967 N Woodlawn CT	Y -5/6/21	Sadie Black	5/11/2021		5/21/2021	
Pure State Services	4075 N Woodlawn	Y -5/6/21	Taylor	5/12/2021		5/21/2021	
Wickham Glass							
Century Manufacturing							
DaVita Dialysis							
Clinic in a Can							
Empire Wall Systems							
B's Moto Lab							
Cera Pro Painters							
Nectar Republic							
FedEx Ground							
Catholic Care Center							
Spiritual Life							
Sunrise Christian Academy							
Isley Magnet School							
Wichita NE High School							

**The City of Bel Aire, Kansas**  
**Industrial Waste Survey Short Form**

Section II, Item A.

This form has been sent to your business to determine types and sources of wastewater that are entering the City of Bel Aire sanitary sewer collection system. This form must be completed by December 15, 2023.

If you have any question or concerns while completing the form please **contact**  
**Anne Stephens at 316-744-2451 ext 133**.

Name of Business \_\_\_\_\_

Address \_\_\_\_\_

City/State/Zip Code \_\_\_\_\_

Telephone: \_\_\_\_\_ Fax: \_\_\_\_\_

Number of Employees \_\_\_\_\_

What Standard Industrial Classification (SIC) Code(s) do you report under:

\_\_\_\_\_, \_\_\_\_\_, \_\_\_\_\_, \_\_\_\_\_.

Briefly describe your business include products manufactured or services performed

\_\_\_\_\_

\_\_\_\_\_

Please list all water uses and **approximate** volume used in gallons per day for each use, including facility washdown water.

Water Use	Volume Used (gallons per day)
Process:	
Facility Washdown	
Domestic(bathrooms, cafeteria)	
Total:	

Our Sewer Use Ordinance requires that an Authorized Representative of the User sign all reports to the Sewer Authority. Authorized Representative is defined as a Person responsible for Principle Business decisions or other policy decisions for the facility.

To the Best of my knowledge the information on this form is true and accurate,

Signature \_\_\_\_\_ Date \_\_\_\_\_

Title \_\_\_\_\_

**Return this form within 30 days to:**

**Anne Stephens**

**City of Bel Aire**

**7651 E Central Park Ave**

**Bel Aire, KS 67220**

Failure to return this form is enforceable in accordance with the Sewer Use Ordinance.





# Bel Aire Sewer Use Framework

November 14, 2023



# Agenda

## Monitoring

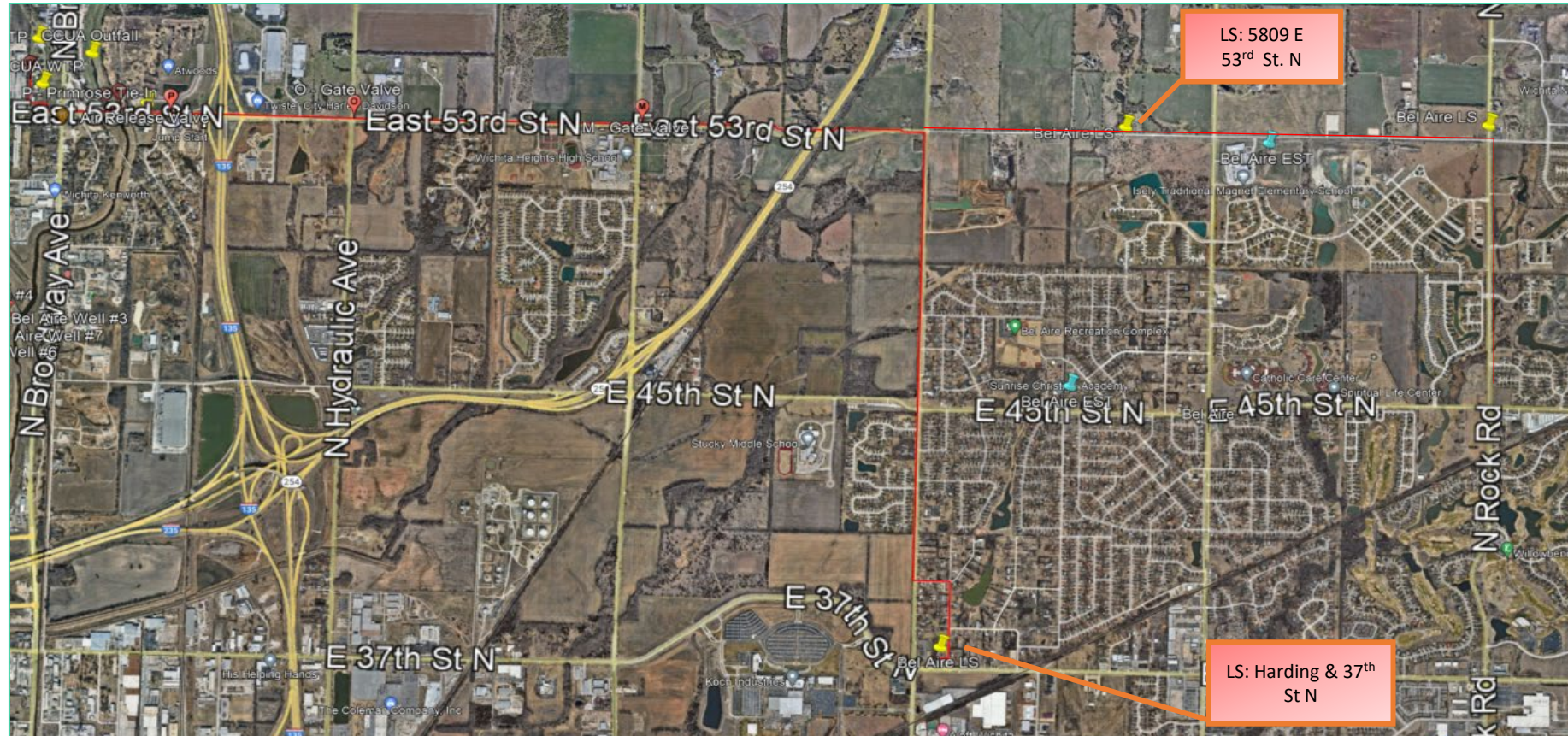
- Lift Station Wastewater Update
- Proposed Sewer Use Ordinance
- Industrial Waste Survey
- Next Steps

# Wastewater Monitoring



# Wastewater Sampling Locations

- Since July 18, 2023, samples have been collected weekly at 2 Lift Stations which collect the wastewater generated in Bel Aire

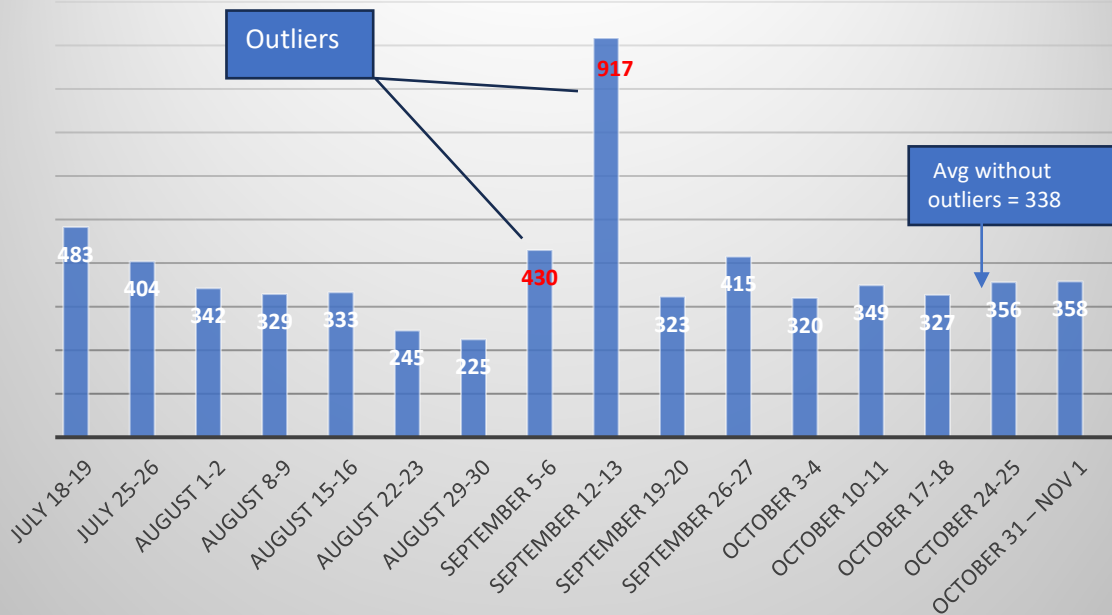


Analytical Results July - October			Harding Lift Station			53 <sup>rd</sup> St. N Lift Station				
Sample Date	BOD mg/L	TSS mg/L	NH3-N mg/L	TKN mg/L	PO4 mg/L	BOD mg/L	TSS mg/L	NH3-N mg/L	TKN mg/L	Section II, Item A.
										mg/L
July 18-19	483	387	47.4	41.4	10.8	672	381	45.9	47.2	6.4
July 25-26	404	79.3	50.7	61.8	8.4	272	137	41	48.7	6
August 1-2	342	373	22.6	66.2	6.7	312	219	19.4	46.6	5.3
August 8-9	329	326	41.6	43.4	7.2	402	471	39.8	47	5.6
August 15-16	333	333	42.5	78.9	7	484	300	43.7	85.3	5.4
August 22-23	245	237	59.5	59.8	10.5	338	218	0.1	32.3	5.8
August 29-30	225	217	51.2	78.1	8.8	328	204	39.9	57.4	6
September 5-6	430	504	48.8	96.5	11.8	300	232	42	65.3	6.5
September 12-13	917	2290	50.5	115	15.9	308	188	36.6	52.5	6.2
September 19-20	323	238	44.8	71	7.8	367	295	42	63.8	7
September 26-27	415	252	24.2	58.4	9.8	379	278	37.9	48.2	6.7
October 3-4	320	233	47.3	68.4	7.3	368	226	42.9	60.5	6
October 10-11	349	352	43.4		6.7	329	184	36.2		5.6
October 17-18	327					323				
October 24-25	356	199	46.4	61	6.76	369	284	38.3	56	5.2
October 31 – Nov 1	358					393				



# BOD Results

## Harding Lift Station BOD mg/L



**BOD Average = 385 mg/L**

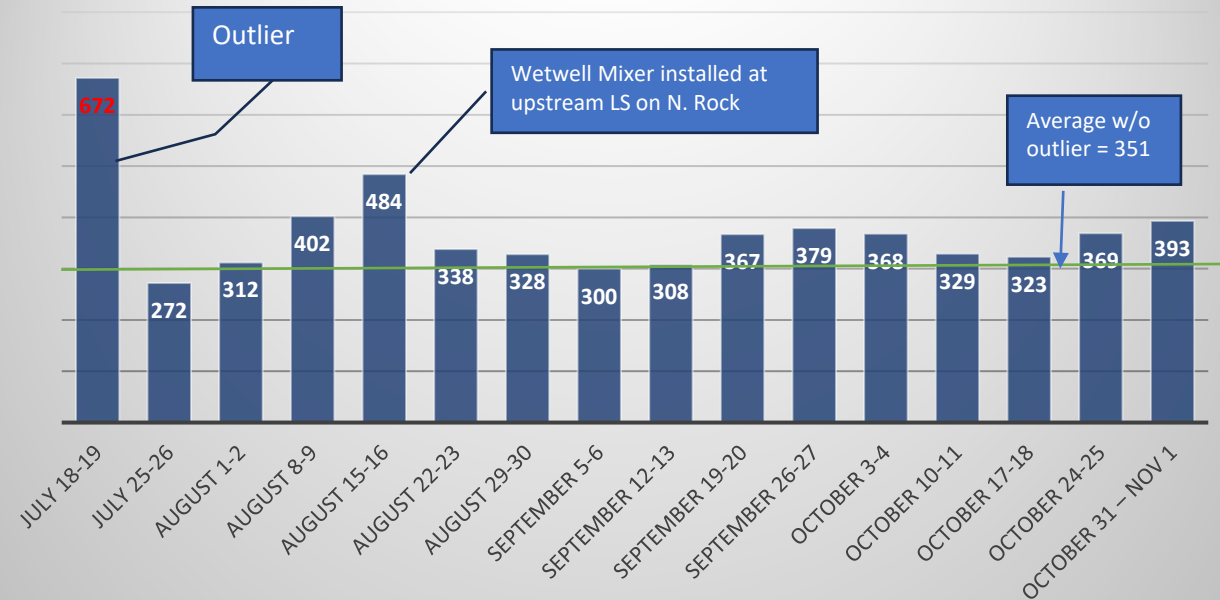
**BOD Average w/o outlier = 338 mg/L**

Literature Avg Value = 300 mg/L

Current CCUA Design Parameter = 239 mg/L

September CCUA Average = 256 mg/L

## 53rd St N. Lift Station BOD mg/L



**BOD Average = 372 mg/L**

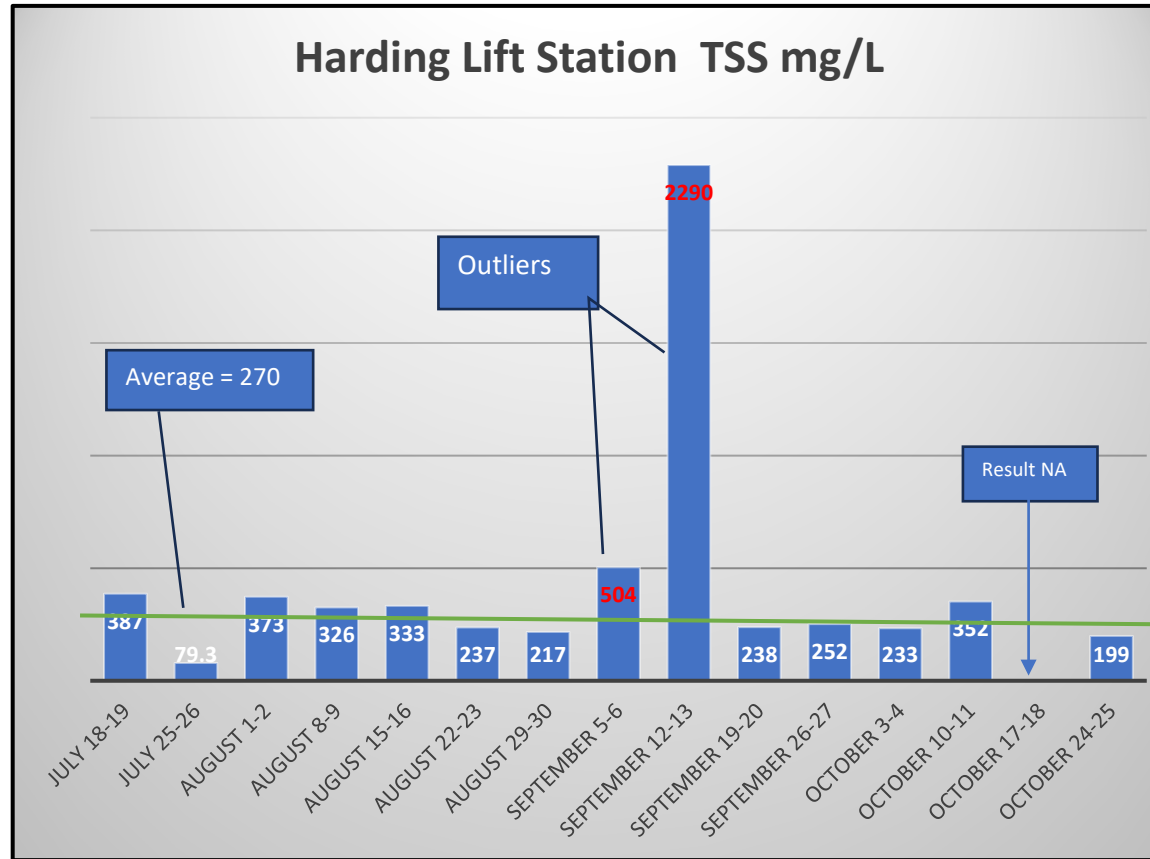
**BOD Average w/o outlier = 351mg/L**

Literature Avg Value = 300 mg/L

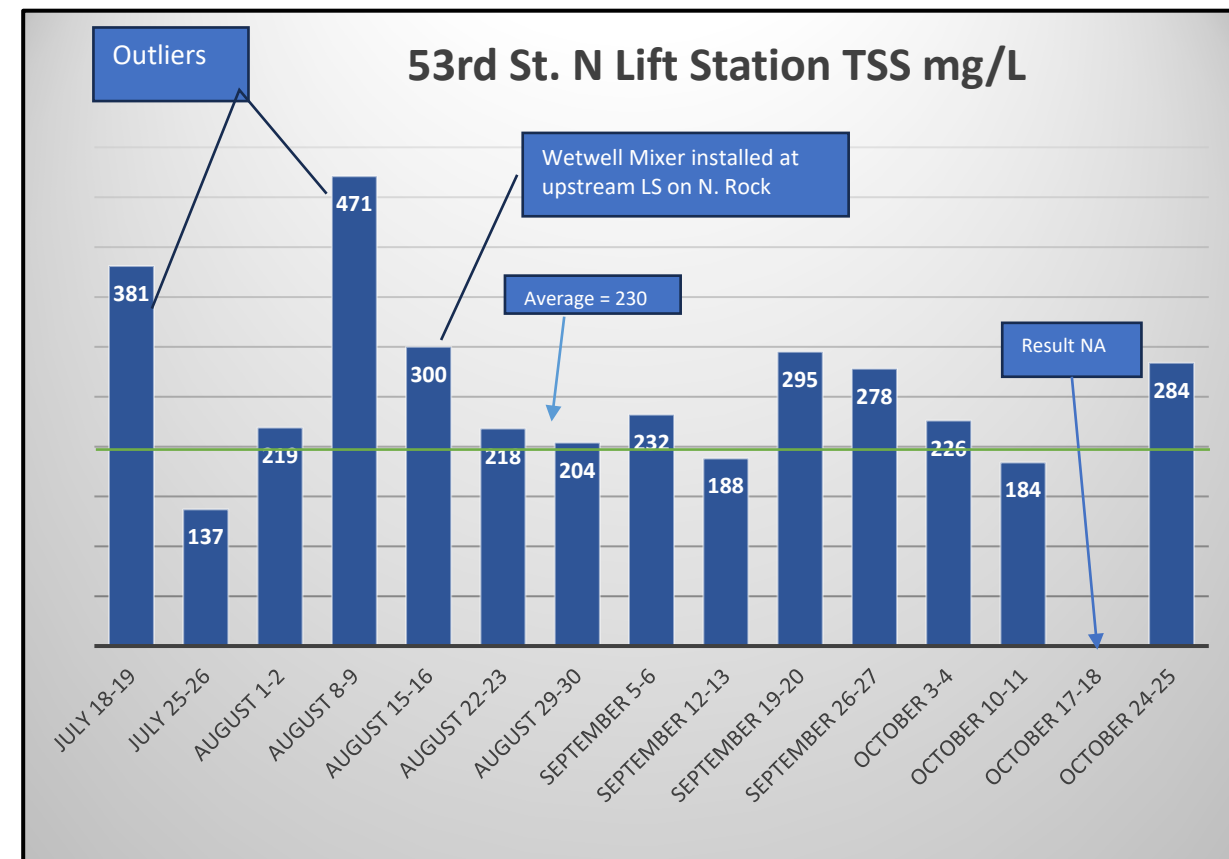
Current CCUA Design Parameter = 239 mg/L

September CCUA Average = 256 mg/L

# TSS Results



TSS Average = 430 mg/L  
 TSS Average w/o outliers = 270 mg/L  
 TSS Literature Value = 250 mg/L  
 Current CCUA Design Parameter = 239 mg/L  
 September CCUA Average = 147 mg/L



TSS Average = 262 mg/L  
 TSS Average w/o Outliers = 230 mg/L  
 TSS Literature Value = 250 mg/L  
 Current CCUA Design Parameter = 239 mg/L  
 September CCUA Average = 147 mg/L

# Additional Parameter Average Results

	NH <sub>3</sub> -N mg/L	TKN mg/L	PO <sub>4</sub> mg/L
Harding Lift Station	46 mg/L	55 mg/L	10 mg/L
53 <sup>rd</sup> Street Lift Station	34 mg/L	54 mg/L	6 mg/l
Literature Value	40 mg/L	60 mg/L	5 – 15 mg/L

# Recommendations

- **Continue weekly sample collection program to assess any changes due to seasonal changes, wet weather events, and other events impacting wastewater characteristics**
- **Follow-up on any non-typical sampling results**



# SEWER USE ORDINANCE



# Background

- August 8, 2023 - Burns & McDonnell introduced components of wastewater pretreatment program to City Council
- City staff and Burns & McDonnell met through the months of August to September to develop proposed Sewer Use Ordinance

# Proposed Sewer Use Ordinance Components

- General Provisions
- General Sewer Use Requirements
- Pretreatment of Wastewater
- Notification & Reporting Requirements
- Right of Entry
- Confidential Business Information
- Administrative/Judicial Enforcement Remedies
- Effective Date

# Section 1 - General Provisions

- 1.1 Purpose and Policy
  - Ordinance covers all Users of Bel Aire's Sanitary Sewer System
  - Objectives to meet basic pretreatment requirements
- 1.2 Administration
  - City Engineer and delegated City employees
- 1.3 Abbreviations
  - Acronyms typically used by regulatory authorities
- 1.4 Definitions
  - Terms and phrases used in the ordinance

# Section 2 Sewer Use Requirements

- 2.1 Prohibited Discharge Standards
  - Includes General Prohibition of wastewater that results in pass-through or interference of treatment of wastewater
  - Includes 24 Specific Prohibited Discharge Types
- 2.2 National Categorical Standards
- 2.3 Site Specific Limits
- 2.4 Best Management Practices
- 2.5 City's Right of Revision
- 2.6 Dilution

# Section 3 Pretreatment of Wastewater

- Pretreatment Facilities
- Additional Pretreatment Measures
- Accidental Discharge/Slug Control Plans
- Hauled Wastewater -
  - City does have one RV wastewater disposal site

# Section 4 Notification/Reporting Requirements

- Industrial User Questionnaire
- Notification of Change in Discharge
- Notification of Hazardous Waste
- Report of Potential Problems
- Authorized Signature

# Section 5 Right of Entry

- Inspection
- Sampling



- Users shall allow the City Engineer ready access to all parts of the premises for the purposes of inspection, sampling, records examination and copying, and the performance of any additional duties, including the use of digital photography to gather information.



# Section 6 Confidential Information

- The Business Owner may mark information submitted to the City as confidential, if the User can show that such information would divulge that the information, process or method of production is entitled to “protection of trade secrets”. Wastewater constituents and effluent sampling data is not eligible as confidential.

**CONFIDENTIAL**

# Section 7 Enforcement Remedies

- Notification of Violation
- Consent/Administrative Order
- Suspension of Service
- Show Cause Hearing
- Compliance Orders
- Cease and Desist Orders
- Administrative Fines
- Injunctive Relief
- Remedies Nonexclusive
- Water Supply Severance
- Prohibited Discharge Standards

# Section 8 Effective Date

- Ordinance is Effective upon Approval and Publication



# Industrial Waste Survey



# Industrial User Waste Survey Procedures

- Compile a list of Industrial Users
  - At the request of KDHE, the City sent out a survey in 2021, and received 4 responses
  - It is estimated that there may be up to 15 potential facilities in Bel Aire that could submit an Industrial Waste Survey
- Survey Industrial Users
- Conduct Follow-up Activities
- Summarize Survey Results

# Master List of Industrial Users –Sources

- Water Utility Billing Records
- Business License Records
- Google Search
- GIS Data
- Building Permits
- Commercial Directories (Chamber of Commerce)
- Property Tax Records
- Fire Dept. Emergency Plans

# Survey Procedures

- Send out Survey – Easy to Read and Understand
- Requires Authorized Official Signature
- Eliminate
  - Any facility that does not generate wastewater
  - Already Permitted by KDHE
  - Discharges non-domestic wastewater (beauty salons, retail shops)
  - Others that do not contribute problematic discharges (i.e. hotels, service stations, apartments)

# Suggested Survey Form Components

- Business Name and Address
- SIC Code (or NAICS)
- Major Products manufactured at facility
- Process Waste flow if known
- Authorized Signature

The City of Bel Aire, Kansas  
Industrial Waste Survey Short Form

This form has been sent to your business to determine types and sources of wastewater that are entering the City of Bel Aire sanitary sewer collection system. This form must be completed by December 15, 2023.

If you have any question or concerns while completing the form, please contact:  
Anne Stephens at 316-744-2451 ext. 133

Name of Business \_\_\_\_\_  
Address \_\_\_\_\_  
City/State/Zip Code \_\_\_\_\_  
Telephone: \_\_\_\_\_ Fax: \_\_\_\_\_  
Number of Employees \_\_\_\_\_  
What Standard Industrial Classification (SIC) Code(s) do you report under:  
\_\_\_\_\_

Briefly describe your business include products manufactured or services performed:  
\_\_\_\_\_  
\_\_\_\_\_

Please list all water uses and **approximate** volume used in gallons per day for each use, including facility washdown water.

Water Use	Volume Used (gallons per day)
Process:	
Facility Washdown	
Domestic(bathrooms, cafeteria)	
Total:	

Our Sewer Use Ordinance requires that an Authorized Representative of the User sign all reports to the Sewer Authority. Authorized Representative is defined as a Person responsible for Principle Business decisions or other policy decisions for the facility.

To the Best of my knowledge the information on this form is true and accurate,  
Signature \_\_\_\_\_ Date \_\_\_\_\_  
Title \_\_\_\_\_

Return this form within 30 days to:

Anne Stephens  
City of Bel Aire  
7651 E Central Park Ave  
Bel Aire, KS 67220

Failure to return this form is enforceable in accordance with the Sewer Use Ordinance.

TWS Short Form  
Filename: TWS Short Form  
Revision Date: November 1, 2023



# Recommended Actions

- Develop an Outreach Strategy – i.e. notify user of upcoming survey
- Include a Stamped, Pre-Addressed Envelope
- Include a Cover Letter
  - Describe Importance of Survey
  - Request User to Confirm Correct Address and Contact information
  - Include City contact information
  - Include a deadline to receive completed survey form

# Follow-Up Activities

- Review all returned responses for completeness and accuracy
- Send out reminders to Users who do not submit form after the deadline
- If resources are available, follow-up in person

# Summarize Survey Results

- Develop a Database that includes all Users, Locations, SIC Codes and any Permits

## Appendix B. Classification of Industrial Users

### Classification of surveyed industrial users:

Industry Name Contact Name/Phone # Address	Primary Activity: Process/Products NAICs Code	Water use total: Sanitary flow: Process water:	Wastewater pollutants (if known)	Existing pretreatment facilities?	Discharges >= 25,000 gpd of process wastewater	Contributes >5% of hydraulic or organic loading	Potential to adversely affect POTW (slug load, spill potential)	Pretreatment Required? SIU? CIU? / #?

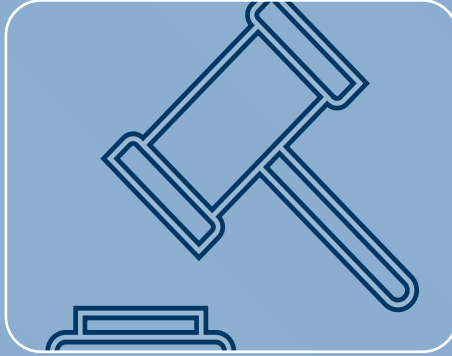
# Ongoing Survey Efforts

- Drive-By (Windshield Surveys)
- Agency (EPA or KDHE) Notifications
- Routinely Check
  - Utility Billing Records
  - Building Plans



*EPA Recommends Formal Survey be performed once every 5 years*

# NEXT STEPS



Sewer Use  
Ordinance  
Adoption



Lift Station  
Sampling  
Program



Execute  
Industrial  
Waste Survey



Date: November 2, 2023  
 To: Mayor and City Council  
 From: Deb Appel, Treasurer  
 Subject: 2024 Fee Schedule

**BACKGROUND:** City staff has reviewed the annual Fee Schedule and recommends minimal changes for 2024.

**Court:** In 2023, the City Council executed a contract with Lautz Law which increased the amount paid by the city. The proposed 2024 Fee Schedule lists 8.1.2 Court Appointed Attorney Fee and 8.1.3 Court Re-Appointed Attorney Fee to reflect the exact amount charged to the city by Lautz Law and passed onto the defendant. Without this increase the city would continue to be burdened with the extra cost and unable to pass the expense to the defendant.

**Recreation:** In 2023, pool admissions and membership fees increased yet recreation programs remained the same for the past six years. The last increase was 2018.

Staff compared Bel Aire's fees to Valley Center, Andover, Maize, and the Wichita YMCA; evaluated the number of classes, games, and practices, plus considered program expenses including uniforms and awards. Research showed that Bel Aire Recreation fees should be increased to be in line with neighboring recreation centers fees and cover the program's increased costs. In addition, the Recreation Center proposes two fee structures for Day Camp and Schools Out Camp because Day Camp incurs additional field trip and transportation expenses.

**Utility Rates:** Per Resolutions R-13-03 and R-13-04 establishing water and sewer rates, each utility increases 3% annually, which is reflected on the first bill of each calendar year. Rates have adjusted annually since the passage of the 2013 resolution. 2024 Residential and Commercial Rates are added to the 2024 Fee Schedule.

**RECOMMENDED ACTION:** Pass Resolution R-23-\_\_\_ formally adopting 2024 City of Bel Aire Fee Schedule.

**FINANCIAL IMPLICATIONS:** Court Appointed Attorney Fee and Court Re-Appointed Attorney Fee will cover direct costs to the city. Updated recreation program fees will increase revenue to the Recreation Fund and help offset increased expenses.

**LEGAL IMPLICATIONS:**

N/A

**ATTACHMENTS:**

Recreation Fees Comparison 2023-2024  
 Proposed 2024 City of Bel Aire Fee Schedule  
 Resolution R-23-\_\_\_

(First published in the Ark Valley News on \_\_\_\_\_)

**CITY OF BEL AIRE, KANSAS**

**RESOLUTION NO. R-2023-**

**A RESOLUTION CONCERNING SERVICE, LICENSE AND  
PERMIT FEES WITHIN THE CORPORATE LIMITS OF  
THE CITY OF BEL AIRE, KANSAS.**

**WHEREAS**, the Governing Body of the City of Bel Aire, Kansas regularly reviews, updates, and approves the *City of Bel Aire Schedule of Service, License, and Permit Fees*, for the City of Bel Aire, Kansas.

**NOW, THEREFORE, BE IT RESOLVED BY THE GOVERNING BODY OF THE CITY OF BEL AIRE, KANSAS**, that:

**SECTION 1. ADOPTION.** The 2024 *City of Bel Aire Schedule of Service, License, and Permit Fees*, (Schedule), is hereby approved for use within the corporate limits of the City of Bel Aire, Kansas as set forth herein.

**SECTION 2. INCORPORATION AS APPENDIX.** One (1) copy of the Schedule shall be included as an Appendix within the Bel Aire City Code and open to inspection and available to the public at all reasonable hours.

**SECTION 3. PUBLICATION.** This resolution shall be published once in the official City newspaper.

**SECTION 4. EFFECTIVE DATE.** This resolution shall take effect and be in force January 1, 2024.

**ADOPTED AND PASSED** by the Governing Body of the City of Bel Aire, Kansas, this  
21st day of November, 2023.

\_\_\_\_\_  
Jim Benage, Mayor

ATTEST:

\_\_\_\_\_  
Melissa Krehbiel, City Clerk

**Fee Schedule**  
Effective: January 1, 2024

Section III, Item A.

**Alcohol/Liquor**

**Section 1**

1.1	Enhanced Cereal Malt Beverage Retail	2024	Note
1.1.1	General Retailer (On-Premise Consumption), per each tavern or place selling CMB at retail (Includes \$25 State stamp fee, and \$50 non-refundable fee).	\$225/yr	
1.1.2	Limited Retailer (Off-Premise Consumption), per each place selling only CMB in original unopened containers, and not for consumption on premises. (Includes \$25 State stamp fee, and \$50 non-refundable fee)	\$75/yr	
1.2	<b>Alcohol Liquor</b>		
1.2.1	City Temporary Permit for selling or Serving Alcoholic Liquor (State permit also required)	\$100/ day	
1.2.2	Caterer's Occupational Tax for Selling or Serving Alcoholic Liquor	\$500/2 years	

**Business General Licenses & Permits**

**Section 2**

2.1	Business Licenses	2024	Notes
2.1.1	General Business License	\$50/yr	
2.1.2	Home Occupation License Tier 1 (not required to register)	\$0	
2.1.3	Home Occupation Licenses Tier 2 and 3	\$35/yr	
2.1.4	Solicitor License	\$30/30 days + \$15 per person	
2.1.5	Peddlers License	\$30/30 days + \$15 per person	
2.1.6	Transient Merchant License	\$30/90 days + \$15 per person	
2.1.7	Business Signage-Temp or Permanent (plus any building permit fees)	\$50	
2.1.8	Mobile Home Licenses	\$50 + \$5 per home	
2.1.9	Amusement Ride Co. License Application Fee	\$25	
2.1.10	Amusement Ride Co. Annual License	\$600/ yr	
2.1.11	Temporary Amusement Ride Company Annual License, under 20 rides	\$30/ride	
2.1	<b>General Permits</b>	<b>2024</b>	<b>Notes</b>
2.2.1	Garage, Rummage, Yard Sale Permit	\$2 per day	
2.2.2	Auction Permit	\$100 per auction	
2.2.3	Well Producing Gas or Petroleum	\$1,000 per yr	



## City Utilities and Infrastructure

## Section 3

3.1	Utility Billing and Administration	2024	Notes	
3.1.1	Move In Connection Fee	\$50		
3.1.2	Account Transfer Fee	\$25		
3.1.3	Non-payment fee	\$50		
3.1.4	Utility Late Payment Fee	5%		
3.1.5	Meter Lock Out	\$50		
3.1.6	Lock Damage	\$50		
3.1.7	Meter re-read or leak inspection beyond one per yr	\$50		
3.2	Water and Wastewater Connections	2024	Notes	
3.2.1	Fire Line Standby	\$30/month		
3.2.2	Fire Line Tap Fee	\$950		
3.2.3	Hydrant Meter Fee and Use Permit	\$100		
3.2.4	Metered Hydrant	\$10 per 1,000 gallons		
3.2.5	New and Replacement Water and 4” Sewer (Meter install, tap, inspection, and permit) 1” line	\$3,600		
	1" Water Meter, Tap, Install Permit	\$2,650		
3.2.6	4" Sewer Tap, Install Permit	\$950		
3.2.7	1.5” or 2” Water Meter Installation (Contractor provide & install vault)	\$2,500		
3.2.8	Long service, compound meters or a non-stock meter	Section 5.3.1, 5.3.2, 5.3.3		
3.2.9	Equity Fees (water & sewer)	Water	Sewer	Turn Key Cost
	1.5" Line	\$2,400	\$2,400	\$5,600
	2" Line	\$3,600	\$3,600	\$8,000
	3" Line	\$5,400	\$5,400	\$11,600
	4" Line	\$8,100	\$8,100	\$17,000
	5" Line	\$12,150	\$12,150	\$25,100
	6" Line	\$18,225	\$18,225	\$37,250
	7" Line	\$27,338	\$27,338	\$55,475
	8" Line	\$41,006	\$41,006	\$82,813
	10" Line	\$61,509	\$61,509	\$123,819
	12" Line	\$92,264	\$92,264	\$185,328

## Code Enforcement

## Section 4

4.1	General Fees	2024	Notes
4.1.1	Sign Return		
	Political Sign	\$10	
	All Other Signs	\$15	
4.1.2	8-1-1 One Call Violations	\$100	
4.2	Nuisances and Abatement	2024	Notes
4.2.1	Nuisance Abatement Fees	Section 5.3.1, 5.3.2, 5.3.3	
4.2.2	Condemnation Fees	Section 5.3.1, 5.3.2, 5.3.3	
4.2.3	Mowing	Section 5.3.1, 5.3.2, 5.3.3	

**General Fees****Section 5**

<b>5.1</b>	<b>Administrative Fees</b>	<b>2024</b>	<b>Notes</b>
5.1.1	Insufficient Funds/Returned Payment	\$35	
5.1.2	Copy Fee-Black and White	\$0.25/page	
5.1.3	Copy Fee-Color	\$0.50/page	
5.1.4	Fax Charge	\$2/page	
5.1.5	Retrieval & Inspection of Public Records	\$20/hour	

<b>5.3</b>	<b>Labor, Equipment, Materials</b>	<b>2024</b>	<b>Notes</b>
5.3.1	All labor expenses shall be charged at the employee hourly rate for the actual hours worked, including overtime rates of pay, if applicable. The labor cost shall be increased by 45% to cover all fringe benefit costs		
5.3.2	All city equipment usage shall be charged out at hourly rates prescribed in the "Department of Homeland Security FEMA Schedule of Equipment Rates." These rates are updated periodically by the federal agency.		
5.3.3	All materials purchased from the city warehouse inventories or from a third party vendor, and contracted services, shall be charged out at cost + 10%		

**Planning and Zoning**

<b>6.1</b>	<b>Annual Licensing Fees</b>	<b>2024</b>	<b>Notes</b>
6.1.1	Contractor's License-Class A	\$400/yr	
6.1.2	Contractor's License-Class B	\$200/yr	
6.1.3	Contractor's License-Class C	\$100/yr	
6.1.4	Contractor's License-Class D (Limited)	\$ 75/yr	
6.1.5	Contractor's License-Class X (Utility)	\$ 75/yr	
6.1.6	Electrical/Mechanical/Gas	\$ 75/yr	
6.1.7	HVAC License	\$ 75/yr	
6.1.8	Plumber License	\$ 75/yr	
6.1.9	Working without a license	License fee is doubled	

<b>6.2</b>	<b>Construction Related Fees</b>	<b>2024</b>	<b>Notes</b>
6.2.1	Concrete Permit	\$50	
6.2.2	Gas Permit	\$50	
6.2.3	Electrical Permit	\$50	
6.2.4	Mechanical Permit	\$50	
6.2.5	Plumbing Permit	\$50	
6.2.6	Special Waste Report (grease trap)	\$75	
6.2.7	Swimming Pool Permit	Valuation Table	
6.2.8	Deck, patio, Shed, Gazebo, Fence Permit	Valuation Table	
6.2.9	New residential building construction	\$ .40 per sq ft	
6.2.10	Residential Building Permits	Valuation Table	
6.2.11	Commercial Zoning & Building Permits	Valuation Table	
6.2.12	Commercial Building & Site Plan Review	65% of building	
6.2.13	Demolition Permit	\$100	
6.2.14	Excavation Permit	\$100	
6.2.15	Location Permit	\$25	
6.2.16	Erosion Remediation	5.3.1 and/or 5.3.3	

Construction Related Fees		2024	Notes
6.2.17	Parking Lots (plan review fee assessed per valuation)	\$50 permit plus \$2 per space	
6.2.18	Replacement Card	\$10	
6.2.19	Working without a permit	Permit fee is doubled	
6.2.20	Inspection when no fee specifically indicated	\$50/hr (½ hr min.)	
6.2.21	Re-Inspection fee for all permits	\$60	
6.2.22	Same day inspection fee	\$50/hr (½ hr min.)	
6.2.23	After hours inspection	\$60/hr (½ hr min.)	

6.3	General Fees	2024	Notes
6.3.1	Curb Cut	\$60	
6.3.2	Culvert Cut	\$60	
6.3.3	Pavement Cut	\$60	
6.3.4	Street Connection Permit	\$200	
6.3.5	Well Permit	\$100	
6.3.6	Sprinkler Permit (Residential)	\$50	
6.3.7	Sprinkler Permit (Commercial)	\$100	
6.3.8	Backflow test report filing fee	\$5	
6.3.9	Floodplain Permit	\$25	

6.4	Land Use and Zoning	2024	Notes
6.4.1	Board of Zoning and Appeals	\$200.00	
6.4.2	Zone Change	\$500.00 + Publication costs	
6.4.3	Lot Split	\$200.00	
6.4.4	Vacations	\$250.00	
6.4.5	Preliminary Plat	\$350.00/\$10.00 lot	
6.4.6	Final Plat	\$350.00/\$10.00 lot	
6.4.7	One-Step Plat	\$350.00/\$10.00 lot	
6.4.8	Preliminary PUD Plan	\$350.00/\$10.00 lot	
6.4.9	Final PUD Plan	\$350.00/\$10.00 lot	
6.4.10	Zoning Variance	\$175.00	
6.4.11	Special Use	\$250.00	
6.4.12	Conditional Use	\$250.00	
6.4.13	Administrative Exceptions	\$175.00	
6.4.14	Right-of-Way Application (Residential)	\$20.00	
6.4.15	Right-of-Way Application (Commercial)	\$75.00	
6.4.16	Firework Distribution	\$2,500 up to 2,500 sq. ft. /\$1 per additional sq. ft.	
6.4.17	Engineering	5.3.1 and/or 5.3.3	

**City of Bel Aire Commercial and Residential Building and Zoning Permit Fees**  
**Adopted by City Council, June 1, 2010**

<u>TOTAL VALUATION-\$</u>	<u>FEE- \$</u>	<u>TOTAL VALUATION-\$</u>	<u>FEE-\$</u>
\$1 - 500	\$33.00	\$33,001 - 34,000	\$353.00
\$501 - 600	\$35.50	\$34,001 - 35,000	\$359.00
\$601 - 700	\$38.00	\$35,001 - 36,000	\$366.00
\$701 - 800	\$40.50	\$36,001 - 37,000	\$373.00
\$801 - 900	\$43.00	\$37,001 - 38,000	\$380.00
\$901- 1,000	\$45.50	\$38,001 - 39,000	\$387.00
\$1,001 - 1,100	\$48.00	\$39,001 - 40,000	\$394.00
\$1,101 - 1,200	\$50.50	\$40,001 - 41,000	\$401.00
\$1,201 - 1,300	\$53.00	\$41,001 - 42,000	\$408.00
\$1,301 - 1,400	\$55.50	\$42,001 - 43,000	\$415.00
\$1,401 - 1,500	\$58.00	\$43,001 - 44,000	\$422.00
\$1,5001 - 1,600	\$60.50	\$44,001 - 45,000	\$429.00
\$1,6001 - 1,700	\$63.00	\$45,001 - 46,000	\$436.00
\$1,701 - 1,800	\$65.50	\$46,001 - 47,000	\$443.00
\$1,801 - 1,900	\$68.00	\$47,001 - 48,000	\$450.00
\$1,901 - 2,000	\$70.50	\$48,001 - 49,000	\$457.00
\$2,001 - 3,000	\$80.00	\$49,001 - 50,000	\$464.00
\$3,001 - 4,000	\$89.50	\$50,001 - 51,000	\$469.00
\$4,001 - 5,000	\$99.00	\$51,001 - 52,000	\$474.00
\$5,001 - 6,000	\$108.50	\$52,001 - 53,000	\$479.00
\$6,001 - 7,000	\$118.00	\$53,001 - 54,000	\$484.00
\$7,001 - 8,000	\$127.50	\$54,001 - 55,000	\$489.00
\$8,001 - 9,000	\$137.00	\$55,001 - 56,000	\$494.00
\$9,001 - 10,000	\$146.50	\$56,001 - 57,000	\$499.00
\$10,001 - 11,000	\$156.00	\$57,001 - 58,000	\$504.00
\$11,001 - 12,000	\$165.50	\$58,001 - 59,000	\$509.00
\$12,001 - 13,000	\$175.00	\$59,001 - 60,000	\$514.00
\$13,001 - 14,000	\$184.50	\$60,001 - 61,000	\$519.00
\$14,001 - 15,000	\$194.00	\$61,001 - 62,000	\$524.00
\$15,001 - 16,001	\$203.50	\$62,001 - 63,000	\$529.00
\$16,001 - 17,000	\$213.00	\$63,001 - 64,000	\$534.00
\$17,001 - 18,000	\$222.50	\$64,001 - 65,000	\$539.00
\$18,001 - 19,000	\$232.00	\$65,001 - 66,000	\$544.00
\$19,001 - 20,000	\$241.00	\$66,001 - 67,000	\$549.00
\$20,001 - 21,000	\$251.00	\$67,001 - 68,000	\$554.00
\$21,001 - 22,000	\$260.50	\$68,001 - 69,000	\$559.00
\$22,001 - 23,000	\$270.00	\$69,001 - 70,000	\$564.00
\$23,001 - 24,000	\$279.00	\$70,001 - 71,000	\$569.00
\$24,001 - 25,000	\$289.00	\$71,001 - 72,000	\$574.00
\$25,001 - 26,000	\$296.00	\$72,001 - 73,000	\$579.00
\$26,001 - 27,000	\$303.00	\$73,001 - 74,000	\$584.00
\$27,001 - 28,000	\$310.00	\$74,001 - 75,000	\$598.00
\$28,001 - 29,000	\$317.00	\$75,001 - 76,000	\$594.00
\$19,001 - 30,000	\$324.00	\$76,001 - 77,000	\$599.00
\$30,001 - 31,001	\$331.00	\$77,001 - 78,000	\$604.00
\$31,001 - 32,000	\$338.00	\$78,001 - 79,000	\$609.00
\$32,001 - 33,000	\$345.00	\$79,001 - 80,000	\$614.00
		\$80,001 - 81,000	\$619.00

**City of Bel Aire Commercial and Residential Building and Zoning Permit Fees**  
**Adopted by City Council, June 1, 2010**

\$81,001 - 82,000	\$624.00	\$714.00 FOR THE FIRST \$100,000 PLUS
\$82,001 - 83,000	\$629.00	\$4.00 FOR EACH ADDITIONAL \$1,000 OR
\$83,001 - 84,000	\$634.00	FRACTION THEREOF UP TO & INCLUDING
\$84,001 - 85,000	\$639.00	\$500,000
\$85,001 - 86,000	\$644.00	
\$86,001 - 87,000	\$649.00	\$2,299.00 FOR THE FIRST \$500,000 PLUS
\$87,001 - 88,000	\$654.00	\$3.50 FOR EACH ADDITIONAL \$1,000 OR
\$88,001 - 89,000	\$659.00	FRACTION THEREOF UP TO & INCLUDING
\$89,001 - 90,000	\$664.00	\$1,000,000
\$90,001 - 91,000	\$669.00	
\$91,001 - 92,000	\$674.00	\$4,049.00 FOR THE FIRST \$1,000,000
\$92,001 - 93,000	\$679.00	PLUS \$2.50 FOR EACH ADDITIONAL
\$92,001 - 94,001	\$684.00	\$1,000 OR FRACTION THEREOF
\$94,001 - 95,000	\$689.00	
\$95,001 - 96,001	\$694.00	\$15.00 PERMIT ISSUANCE FEE <u>IS</u>
\$96,001 - 97,000	\$699.00	<u>INCLUDED</u> IN THE ABOVE TABLE FEES.
\$97,001 - 98,000	\$704.00	
\$98,001 - 99,000	\$709.00	<u>PLAN REVIEW TO BE CALCULATED</u>
\$99,001 - 100,000	\$714.00	AT 65% OF PERMIT FEE .

**Recreation  
Section 7**
**2024****7.1 Recreation Center Passes**

	Resident	Non-Resident
7.1.1 Family	\$90.00/year	\$155.00/year
7.1.2 Individual	\$ 60.00/year	\$100.00/year
7.1.3 Senior Couple	\$ 60.00/year	\$100.00/year
7.1.4 Resident Senior	\$ 45.00/year	\$65.00/year
7.1.5 Day Fee	\$ 3.00/day	\$ 3.00/day

**7.2 Youth Sports**

	Resident	Non-Resident
7.2.1 Indoor/Outdoor Soccer	\$45.00	\$68.00
7.2.2 Short Sports	\$20.00	\$30.00
7.2.3 Heights Baseball/Softball	\$95.00	\$120.00
7.2.4 Blastball	\$30.00	\$45.00
7.2.5 T Ball	\$45.00	\$68.00
7.2.6 Machine Pitch BB/SB	\$45.00	\$68.00
7.2.7 Youth Pitch BB/SB	\$45.00	\$68.00
7.2.8 Flag Football	\$50.00	\$75.00
7.2.9 Volleyball	\$50.00	\$75.00
7.2.10 Basketball	\$50.00	\$75.00
7.2.11 Little Dribblers	\$30.00	\$45.00
7.2.12 Basketball Clinics/Camps	\$20-\$70; depending on duration	
7.2.13 Late registration fee	\$15.00	\$15.00

**7.3 Youth Activities**

	Resident	Non-Resident
7.3.1 Youth Cheerleading	\$45.00	\$68.00
7.3.2 Spring Break Sports Week	\$45.00	\$30.00
7.3.3 Hip Hop	\$45.00	\$68.00
7.3.4 Tumbling	\$45.00	\$68.00
7.3.5 Dazzling Dancers	\$45.00	\$68.00
7.3.6 Taekwondo 1X/week	\$25.00	\$35.00
7.3.7 Taekwondo 2X/week	\$35.00	\$45.00
7.3.8 Day Camp	\$40 deposit per week	\$160 per week
7.3.9 Schools Out Camp	\$140 per week	\$160 per week

**7.4 Adult Activities**

	Resident	Non-Resident
7.4.1 Group Exercise 1X/week	\$25.00	\$38.00
7.4.2 Group Exercise 2X/week	\$35.00	\$53.00
7.4.3 Yoga 1X/week	\$25.00	\$38.00
7.4.4 Yoga 2X/week	\$35.00	\$53.00
7.4.5 Taekwondo 1X/week	\$25.00	\$38.00
7.4.6 Taekwondo 2X/week	\$35.00	\$53.00

**7.5 Facility Rental**

	Resident	Non-Resident
7.5.1 Gymnasium	\$75/hr	\$100/hr
7.5.2 Activity Room	\$50/hr	\$75/hr
7.5.3 Baseball/Softball Fields	\$ 15/hrs	
7.5.4 Soccer Field	\$ 15-\$25/hr-based on field size	

**7.6 Swimming Pool**

	Resident	Non-Resident	Saturday & Sunday
7.6.1 Daily Fee	\$5.00 week day, \$6.00 Sat-Sun		\$6.00
7.6.2 Individual Membership	\$135.00/yr	\$205.00/yr	
7.6.3 Family Membership	\$200.00 yr	\$300.00/yr	
7.6.4 Rec/Pool Combo	\$260.00/yr	\$345.00/yr	
7.6.5 Group Swimming Lessons	\$ 40.00/session	\$ 60.00/session	
7.6.6 Private Swimming Lessons	\$ 20.00/lesson	\$ 30.00/lesson	
7.6.7 Pool Rental-up to 25 patrons	\$ 60.00/hr	\$ 60.00/hr	
7.6.8 Pool Rental-25 to 50 patrons	\$ 80.00/hr	\$ 80.00/hr	

**OFFENSES***Bond Schedule set by Judge per K.S.A 12-4305**Infraction Fines set by K.S.A 8-2118**CAR = Court Appearance Required.**NTA = Notice to appear.**PS = Professional Surety**OR = Own Recognizance**NCO = No Contact Order***Section 8**

8.1	Court Fees	2024	Note
8.1.1	Court Cost	\$100	
8.1.2	Court Appointed Attorney Fee	\$250	City Code 5.2.4, ORD 367
8.1.3	Court Re-Appointed Attorney Fee	\$100	City Code 5.2.4, ORD 367
8.1.4	Warrant	\$50	
8.1.5	DL Reinstatement	\$122	not determined by City
8.1.6	Pre-Sentence Investigation	\$150	not determined by City
8.1.8	Filing of petition for expungment	\$150	
8.1.9	Court Record Request	\$25	
8.1.10	DVD Copies	\$30	
8.1.11	Certified Letter Fee	\$10	
8.1.12	Failure to appear Letter Fee	\$10	
8.1.13	Court Ordered Finger Prints	\$33	
8.1.14	Fingerprints for citizens	\$20	
8.1.15	Police Report	\$20	
8.1.16	Court Report	\$20	
8.1.17	Trial Fee	\$20	
8.1.18	Jail Fee*	*	
*Rate determined/billed by Sedgwick Co.			

8.2	Traffic Signs, Signals, and Markings	2024	Bond Schedule	Note
8.2.1	Disobeying Traffic Control Device	\$75	NTA	K.S.A 8-2118
8.2.2	Violating Traffic Control Signal	\$75	NTA	K.S.A 8-2118
8.2.3	Pedestrian-Control Signals	\$45	NTA	K.S.A 8-2118
8.2.4	Flashing Signals	\$75	NTA	K.S.A 8-2118
8.2.5	Lane-Control Signal	\$75	NTA	K.S.A 8-2118
8.2.6	Unauthorized Sign, Signal, Marking or Device	\$45	NTA	K.S.A 8-2118
8.2.7	Interference Traffic-Control Device or RR Signals	CAR/\$135	NTA	K.S.A 8-2118
8.2.8	Driving on Play Streets	\$75	NTA	
8.2.9	Obedience to authorized persons directing traffic	CAR	NTA	K.S.A 8-2118

8.3	Accidents	2024	Bond Schedule	Note
8.3.1	Leaving the Scene of a Death or Injury Accident	CAR	2500 PS	
8.3.2	Leaving Scene Non-Injury Accident	CAR	500 PS	
8.3.3	Duty to Give Information & Render Aid ACC IDENT	CAR	500 PS	
8.3.4	Duty Striking Unattended VEH or Other Property	CAR	NTA	
8.3.5	Duty to Report Accidents	CAR	NTA	
8.3.6	False Reports	CAR	1000 PS	

8.4	Serious Traffic Offenses	2024	Bond Schedule	Note
8.4.1	Reckless Driving	CAR	300 PS	
8.4.2	D.U.I. (1st Offense)	CAR	2500 PS	
8.4.3	(2nd Offense)	CAR	2500 PS	
8.4.4	(3rd Offense)	CAR	2500 PS	
8.4.5	D.U.I. Commercial Vehicle (1st Offense)	CAR	2500 PS	
8.4.6	(2nd Offense)	CAR	2500 PS	

8.4.8	Fleeing or Attempting to Elude Police	CAR	2500 OR
-------	---------------------------------------	-----	---------

8.5	Speed Limits	2024	Bond Schedule	Note
8.5.1	Speed Basic Rule	\$75	NTA	K.S.A 8-2118
8.5.2	Maximum Speed Limits (1-10 mph over limit)	\$45	NTA	K.S.A 8-2118
8.5.3	Speed 11-20 mph over limit (add \$6.00 per mph over 10 up to 20)	\$45 plus*	NTA	K.S.A 8-2118
8.5.4	Speed 21-30 mph over limit (add \$9.00 per mph over 20 up to 30)	\$105 plus**	NTA	K.S.A 8-2118
8.5.5	Speed 31 mph & up over limit (add \$15.00 per mph over 30)	\$195 plus ***	NTA	K.S.A 8-2118
8.5.6	Minimum Speed Regulation	\$45	NTA	K.S.A 8-2118
8.5.7	Speed Motor Driven Cycle	\$75	NTA	K.S.A 8-2118
8.5.8	Racing or Drag Racing	CAR	NTA	K.S.A 8-2118

\* add \$6.00 per mph over 10 mph over the limit. Ex: 11mph over = \$51, 12mph over = \$57, 13mph over = \$63, etc

\*\*add \$9.00 per mph over 20 mph over the limit. Ex: 21mph over = \$114, 22mph over = \$123, 23mph over = \$132, etc

\*\*\*add \$15.00 per mph over 30mph over the limit. Ex 31mph over = \$210, 32mph over = \$225, 33mph over = \$240, etc

8.6	Driving on Right Side of Roadway; Overtaking	2024	Bond Schedule	Note
8.6.1	Driving Right Side of Roadway	\$75	NTA	K.S.A 8-2118
8.6.2	Failure to Keep Right to Pass Oncoming Vehicle	\$75	NTA	K.S.A 8-2118
8.6.3	Improper Passing; Increase Speed when Passed	\$75	NTA	K.S.A 8-2118
8.6.4	Improper Passing on Right	\$75	NTA	K.S.A 8-2118
8.6.5	Limitations on Overtaking on the Left	\$75	NTA	K.S.A 8-2118
8.6.6	Further Limitations on Driving Left of Center	\$75	NTA	K.S.A 8-2118
8.6.7	No Passing Zone Infraction	\$75	NTA	K.S.A 8-2118
8.6.8	One-Way Roadways and Rotary Traffic Islands	\$75	NTA	K.S.A 8-2118
8.6.9	Driving on Roadways Landed for Traffic	\$75	NTA	K.S.A 8-2118
8.6.10	Following Too Close	\$75	NTA	K.S.A 8-2118
8.6.11	Driving Divided Highways	\$45	NTA	K.S.A 8-2118

8.7	Turning & Starting - Signals on Stopping & Turning	2024	Bond Schedule	Note
8.7.1	Turning	\$75	NTA	K.S.A 8-2118
8.7.2	U-Turns, Where Prohibited	\$75	NTA	K.S.A 8-2118
8.7.3	Turning on Curve or Crest of Grade	\$75	NTA	K.S.A 8-2118
8.7.4	Starting Parked Vehicle	\$45	NTA	K.S.A 8-2118
8.7.5	Turning Movements and Required Signals	\$75	NTA	K.S.A 8-2118
8.7.6	Signals by Hand and Arm or Signal Lamps	\$45	NTA	K.S.A 8-2118
8.7.7	Methods of Giving Signals	\$45	NTA	K.S.A 8-2118

8.8	Right-Of-Way	2024	Bond Schedule	Note
8.8.1	Vehicle Approaching or Entering Intersection	\$75	NTA	K.S.A 8-2118
8.8.2	Vehicle Turning Left	\$75	NTA	K.S.A 8-2118
8.8.3	Stop Sign and Yield Signs	\$75	NTA	K.S.A 8-2118
8.8.4	Vehicle Entering Roadway	\$75	NTA	K.S.A 8-2118
8.8.5	Approach of Authorized Emergency Vehicle	\$195	NTA	K.S.A 8-2118
8.8.6	Highway Construction or Maintenance	\$105	NTA	K.S.A 8-2118

8.9	Pedestrians	2024	Bond Schedule	Note
8.9.1	Pedestrian Obedience to Traffic-Control Device	\$45	NTA	K.S.A 8-2118
8.9.2	Pedestrians Right of Way in Crosswalk	\$75	NTA	K.S.A 8-2118
8.9.3	Crossing at Other Than Crosswalk (Jaywalking)	\$45	NTA	K.S.A 8-2118
8.9.4	Drivers Exercise Care	\$45	NTA	K.S.A 8-2118
8.9.5	Pedestrian Use Right Half of Crosswalk	\$45	NTA	K.S.A 8-2118
8.9.6	Pedestrian on Highways	\$45	NTA	K.S.A 8-2118
8.9.7	Pedestrian Soliciting Rides or Business	\$45	NTA	K.S.A 8-2118
8.9.8	Driving Through Safety Zone	\$45	NTA	K.S.A 8-2118
8.9.9	Pedestrian Right of Way on Sidewalks	\$45	NTA	K.S.A 8-2118



8.9.10	Pedestrian Yield to Authorized Emergency Vehicle	\$45	NTA	K.S.A 8-2
8.9.11	Blind Pedestrian Right of Way	\$45	NTA	K.S.A 8-2118
8.9.12	Pedestrian Under Influence of Alcohol	\$45	200 PS	
8.9.13	Bridge or RR Signals	\$45	NTA	K.S.A 8-2118

8.10	Special Stops Required	2024	Bond Schedule	Note
8.10.1	Obedience to Signal Approaching of Train	\$195	NTA	
8.10.2	All Vehicle Must Stop at Certain RR Crossing	\$135	NTA	
8.10.3	Certain Vehicle Stop at RR Crossing	\$195	NTA	
8.10.4	Moving Heavy Equipment at RR Crossing	\$75	NTA	
8.10.5	Emerging from Alley or Private Drive or Building	\$75	NTA	
8.10.6	Overtaking and Passing School Bus	\$315	NTA	
8.10.7	Overtaking and Passing Church Bus	\$195	NTA	

8.11	Stopping, Standing, Parking	2024	Bond Schedule	Note
8.11.1	(A)(1) Double Parking	\$45	NTA	K.S.A 8-118
8.11.2	(A)(2) On Sidewalk	\$45	NTA	K.S.A 8-118
8.11.3	(A)(3) Within an Intersection	\$45	NTA	K.S.A 8-118
8.11.4	(A)(4) On a Crosswalk	\$45	NTA	K.S.A 8-118
8.11.5	(A)(5) Between Safety Zone	\$45	NTA	K.S.A 8-118
8.11.6	(A)(6) Street Excavation	\$45	NTA	K.S.A 8-118
8.11.7	(A)(7) Upon Bridge	\$45	NTA	K.S.A 8-118
8.11.8	(A)(8) On RR Tracks	\$45	NTA	K.S.A 8-118
8.11.9	(A)(9) Controlled Access	\$45	NTA	K.S.A 8-118
8.11.10	(A)(10) Divided Highway	\$45	NTA	K.S.A 8-118
8.11.11	(A)(11) Signs Prohibited	\$45	NTA	K.S.A 8-118
8.11.12	(B)(1) Private Drive	\$45	NTA	K.S.A 8-118
8.11.13	(B)(2) 15' Fire Hydrant	\$45	NTA	K.S.A 8-118
8.11.14	(B)(3) 20' Cross Walk	\$45	NTA	K.S.A 8-118
8.11.15	(B)(4) 30' Stop Sign	\$45	NTA	K.S.A 8-118
8.11.16	(B)(5) 20' FD Driveway	\$45	NTA	K.S.A 8-118
8.11.17	(B)(6) Signs Prohibited	\$45	NTA	K.S.A 8-118
8.11.18	(C)(1) 50' RR Crossing	\$45	NTA	K.S.A 8-118
8.11.19	(C)(2) Signs Prohibit	\$45	NTA	K.S.A 8-118
8.11.20	(D) Away from Curb	\$45	NTA	K.S.A 8-118
8.11.21	(E) Fire Lanes	\$45	NTA	K.S.A 8-118
8.11.22	Stop or Park on Roadways	\$45	NTA	K.S.A 8-118
8.11.23	Handicapped Parking	CAR	NTA	
8.11.24	Handicapped Parking; Revoked or Suspended Device	CAR	NTA	
8.11.25	Parking for Certain Purposes Prohibited	\$45	NTA	
8.11.26	Stall Parking	\$45	NTA	
8.11.27	Blocking Traffic	\$45	NTA	
8.11.28	Parking on Narrow Streets Signs	\$45	NTA	
8.11.29	Parking in Alley	\$45	NTA	
8.11.30	Parking Disabled and Other Vehicles	\$45	NTA	
8.11.31	Park Adjacent to Schools	\$45	NTA	
8.11.32	Stop, Park in Hazardous or Congested Places Signs	\$45	NTA	
8.11.33	Parking Prohibited at All Times in Designated Places	\$45	NTA	
8.11.34	Limited Time Parking Zones	\$45	NTA	
8.11.35	Communication and Delivery Vehicle Loadingand Unloading	\$45	NTA	
8.11.36	Loading, Unloading or Special Zone	\$45	NTA	

8.12	Miscellaneous Rules	2024	Bond Schedule	Note
8.12.1	Using Headphones or TV Reciever	\$40	NTA	
8.12.2	Inattentive Driving	\$75	NTA	
8.12.3	Transporting of Alcoholic Liquor or CMB	CAR	OR	
8.12.4	Unattend Motor Vehicle	\$45	NTA	K.S.A 8-118
8.12.5	Obstruction of Driver's View or Driving Mechanism	\$45	NTA	K.S.A 8-118

8.12.6	Coasting	\$45	NTA	K.S.A 8-
8.12.7	Following Fire APPR. PROH.	\$75	NTA	K.S.A 8-118
8.12.8	Crossing Fire Hose	\$45	NTA	K.S.A 8-118
8.12.9	Putting Glass, Etc.	\$105	NTA	K.S.A 8-118
8.12.10	Stop When Traffic Obstructed	\$45	NTA	K.S.A 8-118
8.12.11	Snowmobile Operation Limited	\$45	NTA	K.S.A 8-118
8.12.12	Unlawful Operation of All-Terrain Vehicle	\$75	NTA	K.S.A 8-118
8.12.13	Unlawful Operation of Low-Speed Vehicle	\$75	NTA	K.S.A 8-118
8.12.14	Unlawful Riding Persons 14 Years of Age and Older	\$75	NTA	K.S.A 8-118
8.12.15	Driving on Sidewalk	\$45	NTA	K.S.A 8-118
8.12.16	Limitations on Backing	\$45	NTA	K.S.A 8-118
8.12.17	Drive Through Private Property to Avoid Traffic Control	\$45	NTA	
8.12.18	Driving Through Procession	\$45	NTA	
8.12.19	Street Barriers	\$45	NTA	
8.12.20	Opening and Closing Vehicle Doors	\$45	NTA	K.S.A 8-118
8.12.21	Riding in House Trailer Prohibited	\$45	NTA	K.S.A 8-118
8.12.22	Driving Across Lawns, Sidewalks, Yards, Crops, Etc.	\$100	NTA	

8.13	Operations of Bicycles, Motorized Bicycles	2024	Bond Schedule	Note
8.13.1	Parental Responsibility of Child Riding Bicycle	\$45	NTA	K.S.A 8-118
8.13.2	Riding on Bicycles Seats; Riders Limited	\$45	NTA	K.S.A 8-118
8.13.3	Clinging to Vehicle	\$45	NTA	K.S.A 8-118
8.13.4	Riding on Roadways and Bicycle Paths	\$45	NTA	K.S.A 8-118
8.13.5	Carrying Articles	\$45	NTA	K.S.A 8-118
8.13.6	Lamps and Other Equipment on Bicycle	\$45	NTA	K.S.A 8-118
8.13.7	Low Power Cycles	\$45	NTA	K.S.A 8-118
8.13.8	Use of Coaster, Skates, Etc.	\$45	NTA	K.S.A 8-118

8.14	Lights, Brakes, Horns and Other Equipment	2024	Bond Schedule	Note
8.14.1	Equipment Offenses	\$75	NTA	K.S.A 8-118
8.14.2	When Lighted Lamps Required	\$45	NTA	K.S.A 8-118
8.14.3	Head Lamps on Motor Vehicle	\$45	NTA	K.S.A 8-118
8.14.4	Tail Lamps	\$45	NTA	K.S.A 8-118
8.14.5	Reflectors	\$45	NTA	K.S.A 8-118
8.14.6	Stop Lamps and Turn Signals	\$45	NTA	K.S.A 8-118
8.14.7	Additional Equipment Required on Certain Vehicles	\$45	NTA	K.S.A 8-118
8.14.8	Color of Clearance, ID, Side Marker, Backup & Reflector	\$45	NTA	K.S.A 8-118
8.14.9	Mount of REFT., Clearance and Side Marker Lamps	\$45	NTA	K.S.A 8-118
8.14.10	Visibility of REFT., Clear, Lamps, and Side Marker Lamps	\$45	NTA	K.S.A 8-118
8.14.11	Lamps or Flags on Project Load	\$75	NTA	K.S.A 8-118
8.14.12	Lamps on Parked Vehicles	\$45	NTA	K.S.A 8-118
8.14.13	Lamps on Other Vehicles and Equipment	\$45	NTA	K.S.A 8-118
8.14.14	Spot Lamps and Auxiliary Lamps	\$45	NTA	K.S.A 8-118
8.14.15	Improper Lamps or Lights on Emergency Vehicle	\$45	NTA	K.S.A 8-118
8.14.16	Improper Stop or Turn Signal	\$45	NTA	K.S.A 8-118
8.14.17	Improper Vehicle Hazard Warning Lamp	\$45	NTA	K.S.A 8-118
8.14.18	Additional Lighting Equipment	\$45	NTA	K.S.A 8-118
8.14.19	Multiple-Beam Road Light Equipment	\$45	NTA	K.S.A 8-118
8.14.20	Use of Multiple-Beam Road Lighting Equipment	\$75	NTA	K.S.A 8-118
8.14.21	Alternative Road Lighting Equipment Dim on Speed	\$45	NTA	K.S.A 8-118
8.14.22	Number of Driving Lamps Required or Permitted	\$45	NTA	K.S.A 8-118
8.14.23	Special Restrictions on Lamps	\$45	NTA	K.S.A 8-118
8.14.24	School Buses	\$45	NTA	K.S.A 8-118
8.14.25	Lighting Equipment on Church Buses	\$45	NTA	K.S.A 8-118
8.14.26	Highway Construction and Maintenance Vehicles	\$45	NTA	K.S.A 8-118
8.14.27	Brakes	\$45	NTA	K.S.A 8-118
8.14.28	Horns and Warning Devices	\$45	NTA	K.S.A 8-118
8.14.29	Noise Prevention; Mufflers	\$45	NTA	K.S.A 8-118
8.14.30	Non-Vehicle Sound Amplification Systems	CAR	NTA	K.S.A 8-118

8.14.31	Mirrors	\$45	NTA	K.S.A 8-
8.14.32	Defective Wipers; Obstruct Windshield or Windows	\$45	NTA	K.S.A 8-118
8.14.33	Rest. As to Tire Equipment	\$45	NTA	K.S.A 8-118
8.14.34	Improper Wide-Based Tire	\$45	NTA	K.S.A 8-118
8.14.35	Spill Load on Highway	\$120		
8.14.36	Trailer and Towed Vehicles	\$120		
8.14.37	One-Way Glass	\$45	NTA	K.S.A 8-118
8.14.38	Child Passenger Safety Restraining System	\$60	NTA	
8.14.39	Seat Belts	\$30	NTA	
8.14.40	Unlawful Riding on Vehicle; Person Under Age 14	\$60	NTA	

8.15	Equipment on Motorcycles and Motor-Driven Cycles	2024	Bond Schedule	Note
8.15.1	Headlamps	\$45	NTA	K.S.A 8-118
8.15.2	Tail Lamps	\$45	NTA	K.S.A 8-118
8.15.3	Reflectors	\$45	NTA	K.S.A 8-118
8.15.4	Stop Lamps	\$45	NTA	K.S.A 8-118
8.15.5	Multiple-Beam Road Lighting Equipment	\$45	NTA	K.S.A 8-118
8.15.6	Lighting Equipment for Motor Driven Cycles	\$45	NTA	K.S.A 8-118
8.15.7	Brake Equipment Required	\$45	NTA	K.S.A 8-118
8.15.8	Performance Ability of Brakes	\$45	NTA	K.S.A 8-118
8.15.9	Other Equipment	\$45	NTA	K.S.A 8-118

8.16	Driver's License and Vehicle Tags	2024	Bond Schedule	Note
8.16.1	No Driver's License	CAR	NTA	
8.16.2	No DL in Possession	CAR	NTA	
8.16.3	Driving While License Canceled, Suspended, or Revoked	CAR	2500 OR	
8.16.4	Driving in Violation of Restrictions	CAR	NTA	
8.16.5	Operation of a Motor Vehicle when Habitual Offender	CAR	3500 PS	
8.16.6	Unauthorized Operator	CAR	NTA	
8.16.7	Unauthorized Minors	CAR	NTA	
8.16.8	Vehicle License, Illegal tag	CAR	NTA	
8.16.9	Unlawful use of License	CAR	NTA	
8.16.10	Motor Vehicle Liability Insurance	CAR	1000 OR	

8.17	Penalties General	2024	Bond Schedule	Note
8.17.1	Parties to a Violation	CAR	NTA	
8.17.2	Offenses by Persons Owning or Controlling Vehicle	CAR	NTA	

8.18	Criminal Violations & Miscellaneous Traffic Offenses	2024	Bond Schedule	Note
8.18.1	Attempt to Commit a Crime	CAR	200 OR	
8.18.2	Conspiracy to Commit a Crime	CAR	500 OR	
8.18.3	Battery	CAR	1000 OR NCO	
8.18.4	Battery Against a Law Enforcement Officer	CAR	2500 OR	
8.18.5	Battery DV	CAR	2500 OR NCO	
8.18.6	Assault	CAR	1000 OR NCO	
8.18.7	Assault Against a Law Enforcement Officer	CAR	500 PS	
8.18.8	Criminal Possession of Firearm	CAR	5000 PS	
8.18.9	Interference with a Fireman	CAR	300 PS	
8.18.10	Encouraging Juvenile Misconduct	CAR	300 PS	
8.18.11	Furnishing Intoxicants to Minors	CAR	1000 OR	
8.18.12	Theft Less Than \$1000	CAR	1000 OR	
8.18.13	Theft of Services Less Than \$1000	CAR	1000 OR	
8.18.14	Deprivation of Property	CAR	500 PS	
8.18.15	Criminal Damage to Property Less Than \$500	CAR	1000 OR	
8.18.16	Criminal Trespass	CAR	1000 OR	
8.18.17	Littering	CAR	500 OR	
8.18.18	Tampering With Traffic Signal	CAR	200 PS	
8.18.19	Shoplifting	CAR	500 PS	
8.18.20	Giving a Worthless Check	CAR	1000 OR	

8.18.21	Obstructing Legal Process	CAR	300 PS
8.18.22	Falsely Reporting a Crime	CAR	2500 OR
8.18.23	Denial of Civil Rights	CAR	500 PS
8.18.24	Lewd & Lascivious Behavior	CAR	2500 PS
8.18.25	Disorderly Conduct	CAR	1000 OR
8.18.26	Resist Arrest	CAR	2500 OR
8.18.27	Unlawful Assembly	CAR	500 OR
8.18.28	Maintaining Public Nuisance	CAR	200 PS
8.18.29	Permitting a Public Nuisance	CAR	200 PS
8.18.30	Giving a False Alarm	CAR	500 OR
8.18.31	Criminal Desecration	CAR	200 PS
8.18.32	Loitering	CAR	100 PS
8.18.33	Promoting Prostitution	CAR	2500 PS
8.18.34	Prostitution	CAR	1500 OR
8.18.35	Unlawful Discharge of Firearm	CAR	300 PS
8.18.36	Creating a Hazard	CAR	300 PS
8.18.37	Dangerous Missiles	CAR	300 PS
8.18.38	Animal at Large	CAR	50 PS
8.18.39	Dog at Large	CAR	50 PS
8.18.40	Possession of Marijuana	CAR	1000 OR
8.18.41	Possession of Drug Paraphernalia	CAR	1500 OR
8.18.42	Obtain Prescription by Fraud	CAR	1000 OR
8.18.43	CMB Consumption Upon a Public Place	CAR	50 PS
8.18.44	CMB Sale Limited to Structure	CAR	50 PS
8.18.45	Purchase or Consumption of CMB by a Minor	CAR	100 PS
8.18.46	Underage Purchases, Possession, Consumption of Liquor	CAR	500 OR
8.18.47	Public Intoxication	CAR	100 PS
8.18.48	Liquor Consumption in a Public Place	CAR	100 PS
8.18.49	False Fire Alarm	CAR	100 PS
8.18.50	Fireworks Prohibited	CAR	50 PS
8.18.51	Fireworks Discharge on Public Property	CAR	50 PS
8.18.52	Throwing Fireworks	CAR	50 PS
8.18.53	Parking Livestock Vehicles	CAR	50 PS
8.18.54	Parking Inoperable Vehicles	CAR	50 PS
8.18.55	Curfew Violation	CAR	NTA
8.18.56	Riding Bicycle or Vehicle on Sidewalk	CAR	NTA
8.18.57	Urinating or Defecating in Public	CAR	50 PS
8.18.58	Damage Plants on Public Property	CAR	50 PS
8.18.59	Curfew Violation in City Parks	CAR	50 PS
8.18.60	Obstruction of Street or Sidewalk	CAR	50 PS
8.18.61	Barricade Placement and Tampering	CAR	50 PS
8.18.62	Putting Petroleum Products in Street	CAR	50 PS
8.18.63	Burning in Street	CAR	50 PS
8.18.64	Careless Driving	CAR	NTA
8.18.65	Parking Street Sweeping	CAR	NTA
8.18.66	Putting Refuse in Container Other Than Own	CAR	50 PS
8.18.67	Open Burning of Refuse	CAR	50 PS

*Bond Schedule set by Judge per K.S.A 12-4305*

*Infraction Fines set by K.S.A 8-2118*

*CAR = Court Appearance Required. These are misdemeanors*

*NTA = Notice to appear. Not an arrestable offense*

*PS = Professional Surety*

*OR = Own Recognizance*

*NCO = No Contact Order*

## **2024 Water Rates Established by Resolution R-2013-03**

**Annual Rate increase effective January billing of each year.**

### **Residential**

Residential water base rate is \$34.20 per monthly billing period.  
Usage tiers:

- 0 - 2,999 gallons: \$4.22 per thousand gallons
- 3,000 - 5,999 gallons: \$5.77 per thousand gallons
- 6000 - 11,999 gallons: \$6.29 per thousand gallons
- 12,000 - 16,999 gallons: \$6.46 per thousand gallons
- 17,000 - 24,999 gallons: \$6.62 per thousand gallons
- 25,000 gallons and over: \$6.69 per thousand gallons

### **Non-Residential/Commercial**

Residential water base rate is \$49.75 per monthly billing period.  
Usage tiers:

- 0 - 2,999 gallons: \$4.72 per thousand gallons
- 3,000 - 5,999 gallons: \$6.29 per thousand gallons
- 6000 - 11,999 gallons: \$6.90 per thousand gallons
- 12,000 - 16,999 gallons: \$7.33 per thousand gallons
- 17,000 - 24,999 gallons: \$7.86 per thousand gallons
- 25,000 gallons and over: \$8.64 per thousand gallons

## **2024 Sanitary Sewer Utility Rates Established by Resolution R-2013-04**

### **Residential**

Residential sewer base rate is \$39.26 per monthly billing period.  
Monthly volume \$7.10 per thousand gallons of water.

### **Non-Residential/Commercial**

Residential water base rate is \$77.58 per monthly billing period.  
Monthly volume \$9.31 per thousand gallons of water.

**Recreation  
Section 7**
**2023****2024****7.1 Recreation Center Passes**

	Resident	Non-Resident	Resident	Non-Resident
7.1.1 Family	\$85.00/year	\$150.00/year	\$90.00/year	\$155.00/year
7.1.2 Individual	\$ 55.00/year	\$95.00/year	\$ 60.00/year	\$100.00/year
7.1.3 Senior Couple	\$ 55.00/year	\$95.00/year	\$ 60.00/year	\$100.00/year
7.1.4 Resident Senior	\$ 40.00/year	\$60.00/year	\$ 45.00/year	\$65.00/year
7.1.5 Day Fee	\$ 3.00/day	\$ 3.00/day	\$ 3.00/day	\$ 3.00/day

**7.2 Youth Sports**

	Resident	Non-Resident	Resident	Non-Resident
7.2.1 Indoor/Outdoor Soccer	\$38.00	\$58.00	\$45.00	\$68.00
7.2.2 Short Sports	\$15.00	\$25.00	\$20.00	\$30.00
7.2.3 Heights Baseball/Softball	\$95.00	\$120.00	\$95.00	\$120.00
7.2.4 Blastball	\$25.00	\$40.00	\$30.00	\$45.00
7.2.5 T Ball	\$38.00	\$58.00	\$45.00	\$68.00
7.2.6 Machine Pitch BB/SB	\$45.00	\$65.00	\$45.00	\$68.00
7.2.7 Youth Pitch BB/SB	\$45.00	\$65.00	\$45.00	\$68.00
7.2.8 Flag Football	\$40.00	\$60.00	\$50.00	\$75.00
7.2.9 Volleyball	\$35.00	\$55.00	\$50.00	\$75.00
7.2.10 Basketball	\$38.00	\$58.00	\$50.00	\$75.00
7.2.11 Little Dribblers	\$25.00	\$40.00	\$30.00	\$45.00
7.2.12 Basketball Clinics/Camps	\$20-\$70; depending on duration		\$20-\$70; depending on duration	
7.2.13 Late registration fee	\$15.00		\$15.00	\$15.00

**7.3 Youth Activities**

	Resident	Non-Resident	Resident	Non-Resident
7.3.1 Youth Cheerleading	\$38.00	\$58.00	\$45.00	\$68.00
7.3.2 Spring Break Sports Week	\$20.00	\$30.00	\$45.00	\$30.00
7.3.3 Hip Hop	\$38.00	\$58.00	\$45.00	\$68.00
7.3.4 Tumbling	\$38.00	\$58.00	\$45.00	\$68.00
7.3.5 Dazzling Dancers	\$38.00	\$58.00	\$45.00	\$68.00
7.3.6 Taekwondo 1X/week	\$20.00	\$35.00	\$25.00	\$35.00
7.3.7 Taekwondo 2X/week	\$30.00	\$45.00	\$35.00	\$45.00
7.3.8 Day Camp	\$140 per week	\$150 per week	\$160 per week	\$180 per week
7.3.9 Schools Out Camp			\$140 per week	\$160 per week

**7.4 Adult Activities**

	Resident	Non-Resident	Resident	Non-Resident
7.4.1 Group Exercise 1X/week	\$20.00	\$35.00	\$25.00	\$38.00
7.4.2 Group Exercise 2X/week	\$30.00	\$45.00	\$35.00	\$53.00
7.4.3 Yoga 1X/week	\$20.00	\$35.00	\$25.00	\$38.00
7.4.4 Yoga 2X/week	\$30.00	\$45.00	\$35.00	\$53.00
7.4.5 Taekwondo 1X/week	\$20.00	\$35.00	\$25.00	\$38.00
7.4.6 Taekwondo 2X/week	\$30.00	\$45.00	\$35.00	\$53.00

**7.5 Facility Rental**

	Resident	Non-Resident	Resident	Non-Resident
7.5.1 Gymnasium	\$75/hr	\$100/hr	\$75/hr	\$100/hr
7.5.2 Activity Room	\$50/hr	\$75/hr	\$50/hr	\$75/hr
7.5.3 Baseball/Softball Fields	\$ 15/hrs		\$ 15/hrs	
7.5.4 Soccer Field	\$ 15-\$25/hr-based on field size		\$ 15-\$25/hr-based on field size	

**7.6 Swimming Pool**

	Resident	Non-Resident	Resident	Non-Resident
7.6.1 Daily Fee	\$5.00 week day, \$6.00 Sat-Sun		\$5.00 week day, \$6.00 Sat-Sun	
7.6.2 Individual Membership	\$135.00/yr	\$205.00/yr	\$135.00/yr	\$205.00/yr
7.6.3 Family Membership	\$200.00 yr	\$300.00/yr	\$200.00 yr	\$300.00/yr
7.6.4 Rec/Pool Combo	\$260.00/yr	\$345.00/yr	\$260.00/yr	\$345.00/yr
7.6.5 Group Swimming Lessons	\$ 40.00/session	\$ 60.00/session	\$ 40.00/session	\$ 60.00/session
7.6.6 Private Swimming Lessons	\$ 20.00/lesson	\$ 30.00/lesson	\$ 20.00/lesson	\$ 30.00/lesson
7.6.7 Pool Rental-up to 25 patrons	\$ 60.00/hr	\$ 60.00/hr	\$ 60.00/hr	\$ 60.00/hr
7.6.8 Pool Rental-25 to 50 patrons	\$ 80.00/hr	\$ 80.00/hr	\$ 80.00/hr	\$ 80.00/hr

## MANAGERS REPORT



**DATE** November 9, 2023  
**TO:** Mayor Benage and City Council  
**FROM:** Ty Lasher, City Manager  
**RE:** November 14 Workshop Agenda

---

### **Streets – 45<sup>th</sup> Street (Oliver to Woodlawn):**

Ken Lee from Garver will be at the meeting to give an update on design schedule. The current design is a 3 lane with curb and guttering, storm sewer and sidewalks. The city has been approved for WAMPO funding and we are waiting on the money to be allocated. Council Member Welch requested Garver present a cost and design for simply replacing the two lanes and keeping open ditches. Ken will have information relating this this concept.

### **Streets – 53<sup>rd</sup> Street (Oliver to Woodlawn):**

Council engaged Garver to design the reconstruction of 53<sup>rd</sup> street. The configuration would be a simple 2 lane with open ditches and sidewalk / biking path on the south side. Ken Lee from Garver will be at the meeting to give an update on construction documents, bid letting and construction timeline.

### **Planning & Development – Sanitary Sewer:**

Council engaged Burns & McDonnell to revise and expand the city's wastewater pretreatment program. Representatives from Burns & McDonnell will be at the meeting to present a proposed draft for consideration. Staff have been involved with the development and it now comes before the Governing Body for final input.

### **Planning & Development – Comprehensive Development Plan:**

Bel Aire's current Comprehensive Development Plan was adopted in 2014. The comprehensive development plan is required by state statute to be updated periodically. The plan serves as a reference point for developers and also for Planning Commission decisions. Council hired PEC at the March 21, 2023 meeting after consideration of a number of companies. PEC has

been gathering data and input so will be at the meeting to share their progress. Comments received by the Governing Body will be gathered to assist in the development of the first draft.

**Planning & Development – Zoning Map:**

Over the last few years, zoning has changed in several locations and the city annexed partials that has changed the zoning map. Staff request PEC update the zoning map to reflect the changes. PEC will simply share the new map with the Governing Body.

**City Administration / Codes – 2024 Fee Schedule:**

Annually, city staff review fees to ensure they are covering expenses required by such services. Fees are based on users and a fairer way to assess costs. Therefore, making sure our fees are in line with actual costs are important. Ted will present the current fee schedule with recommended changes.