



CITY COUNCIL WORKSHOP

550 E. 6th Street, Beaumont, CA

Thursday, July 22, 2021

Workshop: 4:00 PM

Materials related to an item on this agenda submitted to the City Council after distribution of the agenda packets are available for public inspection in the City Clerk's office at 550 E. 6th Street during normal business hours.

AGENDA

MEETING PARTICIPATION NOTICE

This meeting will be conducted utilizing teleconference communications and will be recorded for live streaming as well as open to public attendance subject to social distancing and applicable health orders. All City of Beaumont public meetings will be available via live streaming and made available on the City's official YouTube webpage. Please use the following link during the meeting for live stream access.

beaumontca.gov/livestream

Public comments will be accepted using the following options.

1. Written comments will be accepted via email and will be read aloud during the corresponding item of the meeting. Public comments shall not exceed three (3) minutes unless otherwise authorized by City Council. Comments can be submitted anytime prior to the meeting as well as during the meeting up until the end of the corresponding item. Please submit your comments to: nicolew@beaumontca.gov
2. Phone-in comments will be accepted by joining a conference line prior to the corresponding item of the meeting. Public comments shall not exceed three (3) minutes unless otherwise authorized by City Council. Please use the following phone number to join the call **(951) 922 - 4845**.
3. In person comments subject to the adherence of the applicable health orders and social distancing requirements.

In compliance with the American Disabilities Act, if you require special assistance to participate in this meeting, please contact the City Clerk's office using the above email or call **(951) 572 - 3196**. Notification 48 hours prior to a meeting will ensure the best reasonable accommodation arrangements.

WORKSHOP SESSION - 4:00 PM

CALL TO ORDER

Mayor Lara, Mayor Pro Tem White, Council Member Martinez, Council Member Fenn, Council Member Santos

Action of any Requests for Excused Absence
Pledge of Allegiance
Approval / Adjustments to the Agenda
Conflict of Interest Disclosure

PUBLIC COMMENT PERIOD (ITEMS NOT ON THE AGENDA)

Any one person may address the City Council on any matter not on this agenda. If you wish to speak, please fill out a "Public Comment Form" provided at the back table and give it to the City Clerk. There is a three (3) minute time limit on public comments. There will be no sharing or passing of time to another person. State Law prohibits the City Council from discussing or taking actions brought up by your comments.

ACTION ITEMS

1. Presentation of Draft Wastewater Master Plan

Recommended Action:

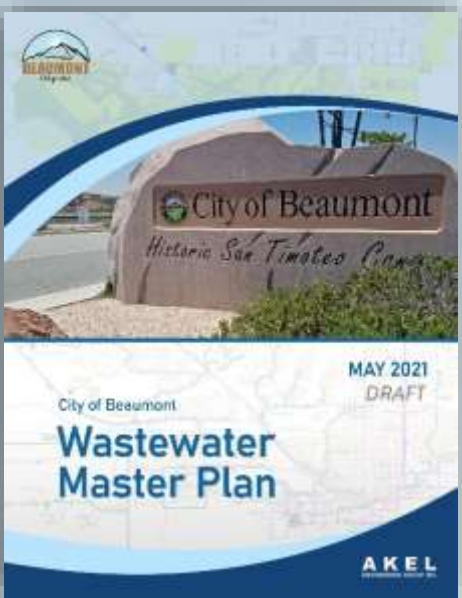
Council discussion.

ADJOURNMENT

The next regular meeting of the Beaumont City Council, Beaumont Financing Authority, the Beaumont Successor Agency (formerly RDA), the Beaumont Utility Authority, the Beaumont Parking Authority and the Beaumont Public Improvement Agency is scheduled for Tuesday, August 3, 2021, at 5:00 p.m., unless otherwise posted.

Beaumont City Hall – Online www.BeaumontCa.gov

City of Beaumont *2021 Wastewater Master Plan*



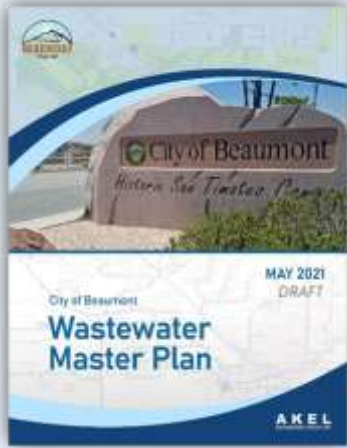
Workshop – Draft Master Plan

June 22, 2021



Objectives of the Wastewater Master Plan

The Wastewater Master Plan (WWMP) provides a **capacity adequacy assessment** of the City's sewer collection system to meet the **level of service** expected by **existing customers**, and to service **future growth**.

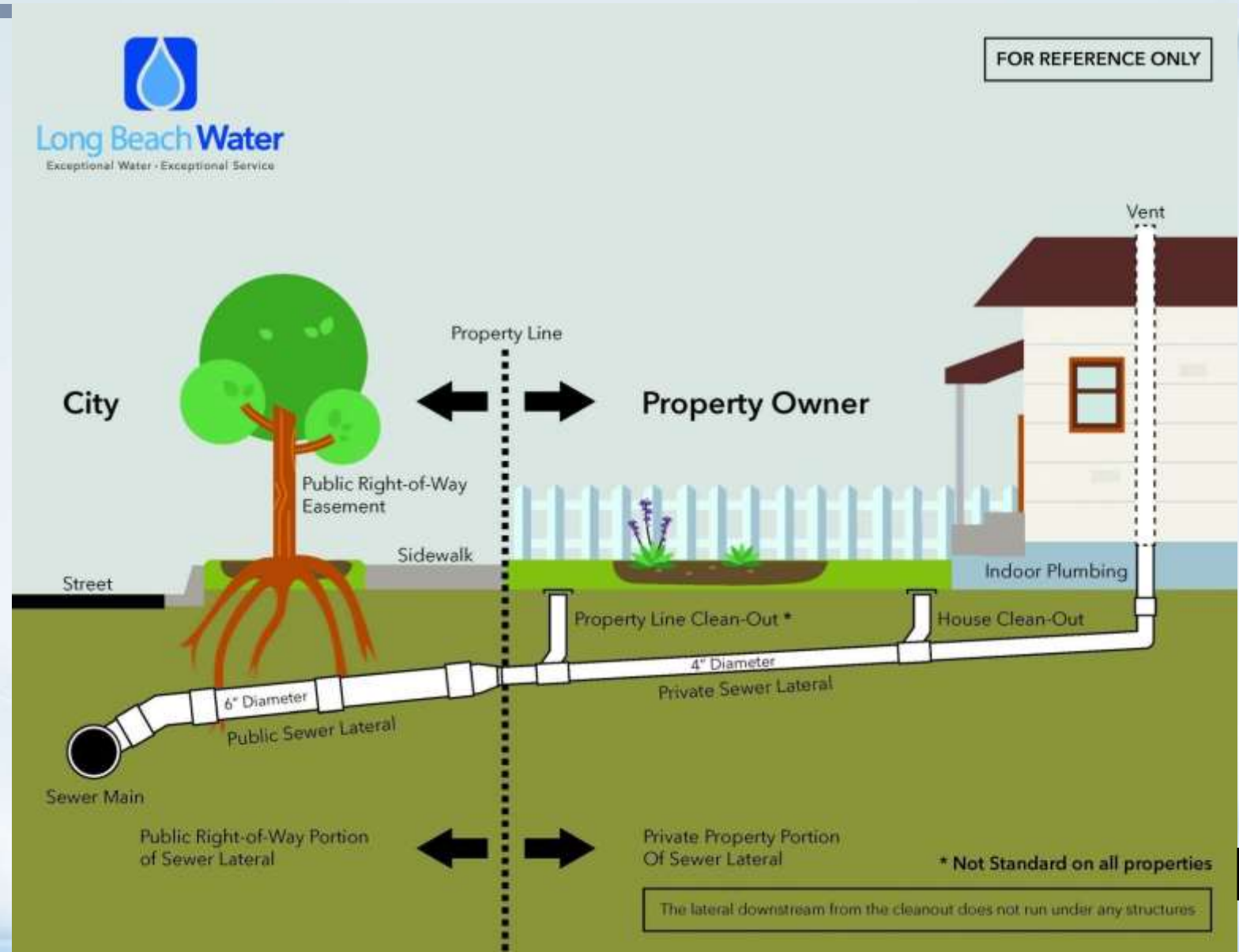


- **What** Infrastructure Needs to be Constructed?
- **When** we do we need it?
- **How much** will it cost?
- **Who** pays for it?

The WWMP is a **defensible** planning and budgetary document.

Wastewater Flows are Collected from our Homes

Wastewater Flows are Collected from our homes to the Sewer pipelines in the street



Wastewater flows continue to WWTP via Gravity Sewers, Lift Stations, and Force Mains

Force Main Sewer

Flow has to be “forced” through the main because gravity alone is not enough to move it.

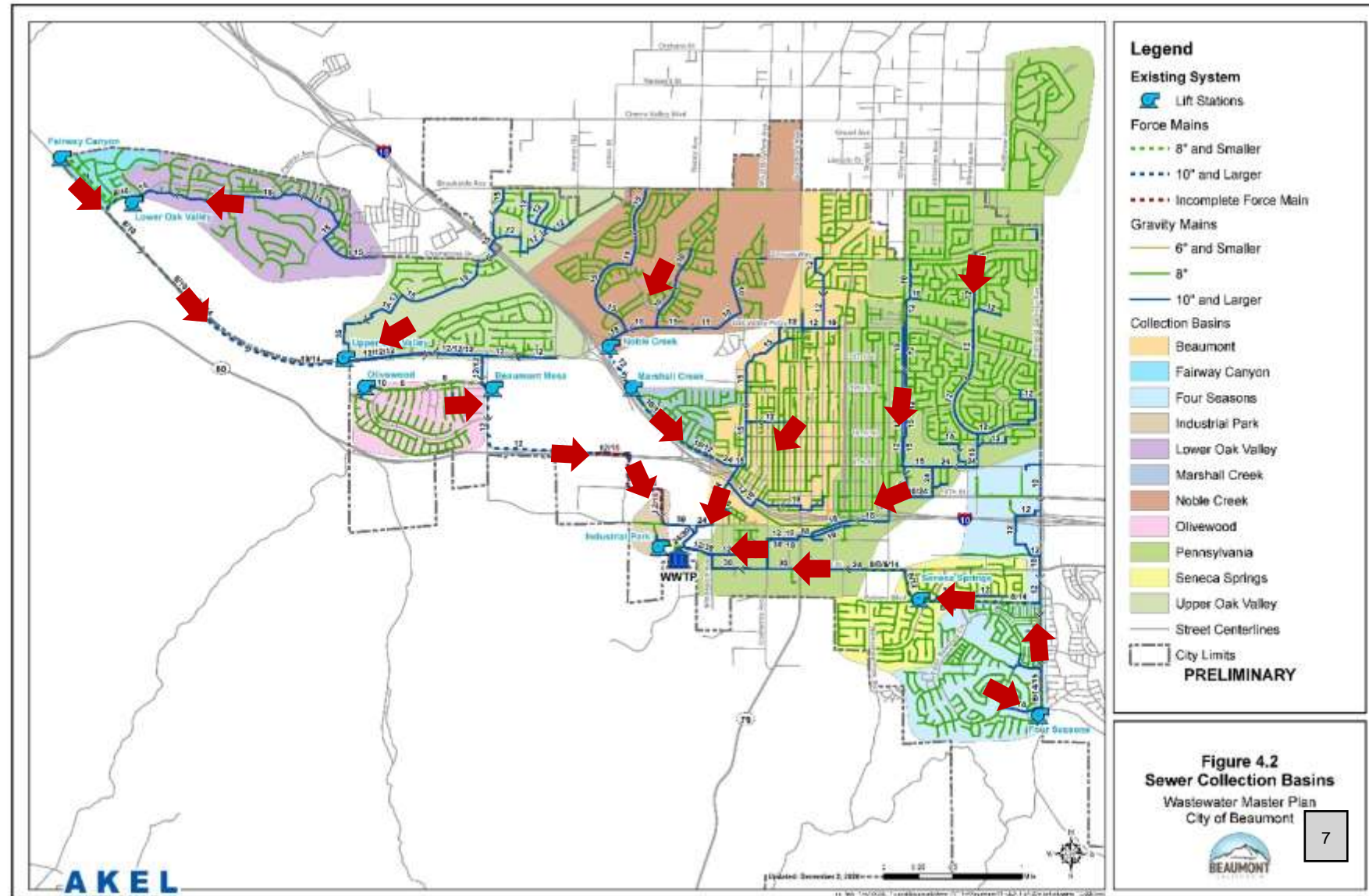
Gravity Sewer

Flow uses gravity to get to pump stations and treatment plants.



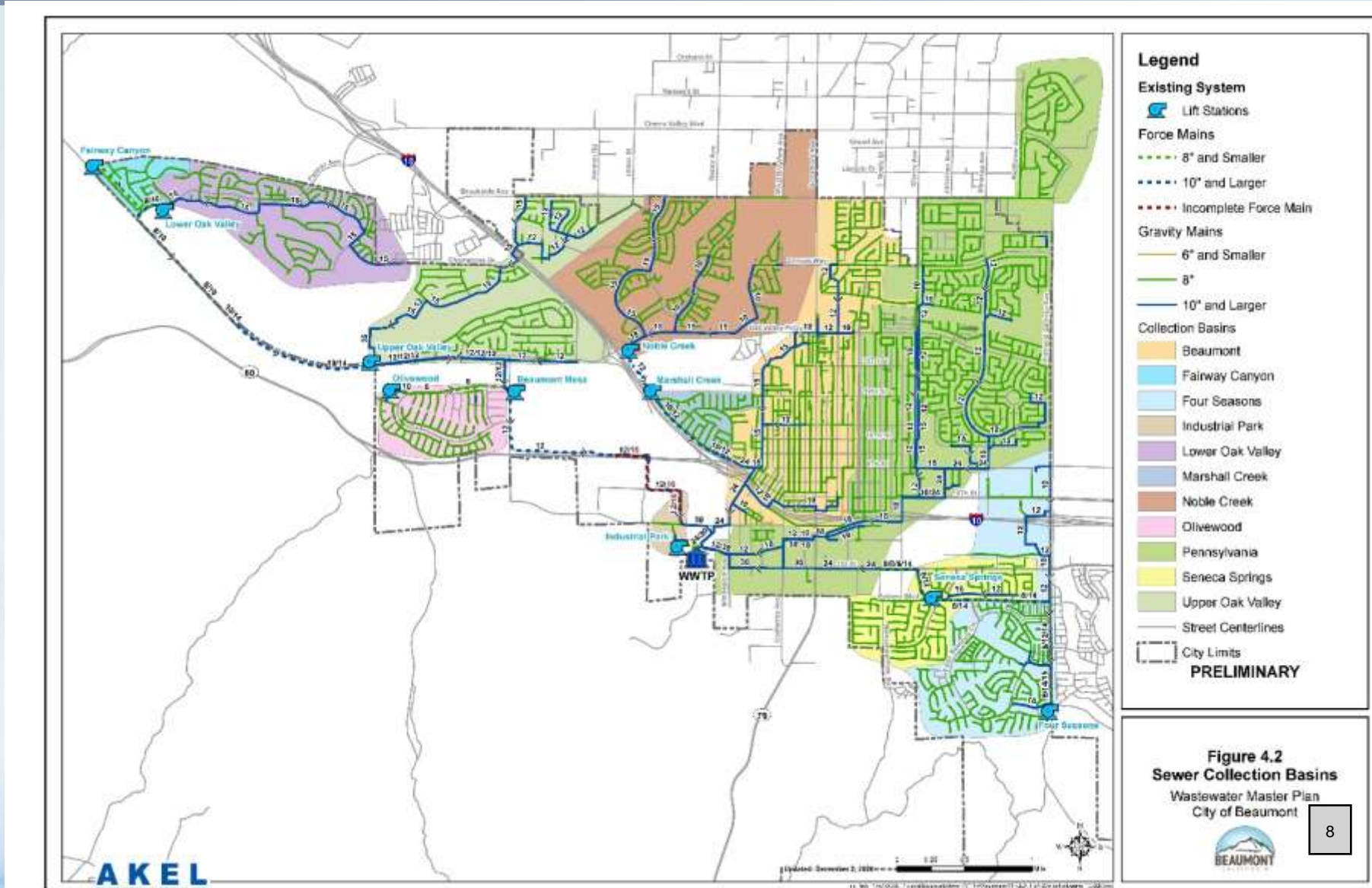
Beaumont Wastewater is Collected from Tributary Basins and Conveyed to the WWTP

- Green Lines are smaller Gravity Sewers.
- Blue Lines are Large Conveyance Sewers (Backbone).
- Dashed lines are force mains
- RED arrows indicate the direction of wastewater flows



Existing Wastewater Collection System

- 177 miles of Gravity Sewers
- 20 miles of Force Main
- 10 Lift Stations
- 1 Wastewater Treatment Plant



The Process for Developing the WWMP

Phase 1

- Data Collection and Review
- Establish Planning Criteria

Item 1.

Phase 2

- Develop and Calibrate Hydraulic Model

Phase 3

- Perform Hydraulic Analysis/Evaluations
- Propose Improvements

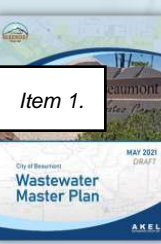
Phase 4

- Develop Capital Improvement Program (CIP)

Phase 5

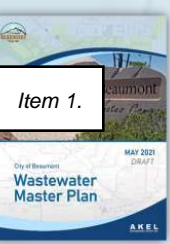
- Prepare Master Plan Report

AGENDA – Follows WWMP Report Chapters



Chapter	Description
1	Introduction
2	Planning Area Characteristics
3	System Performance and Design Criteria
4	Existing Sewer Collection Facilities
5	Wastewater Flows
6	Hydraulic Model Development
7	Hydraulic Evaluation and Proposed Improvements
8	Capital Improvement Program (costs)

Chapter 1 – Introduction



Purpose of Chapter

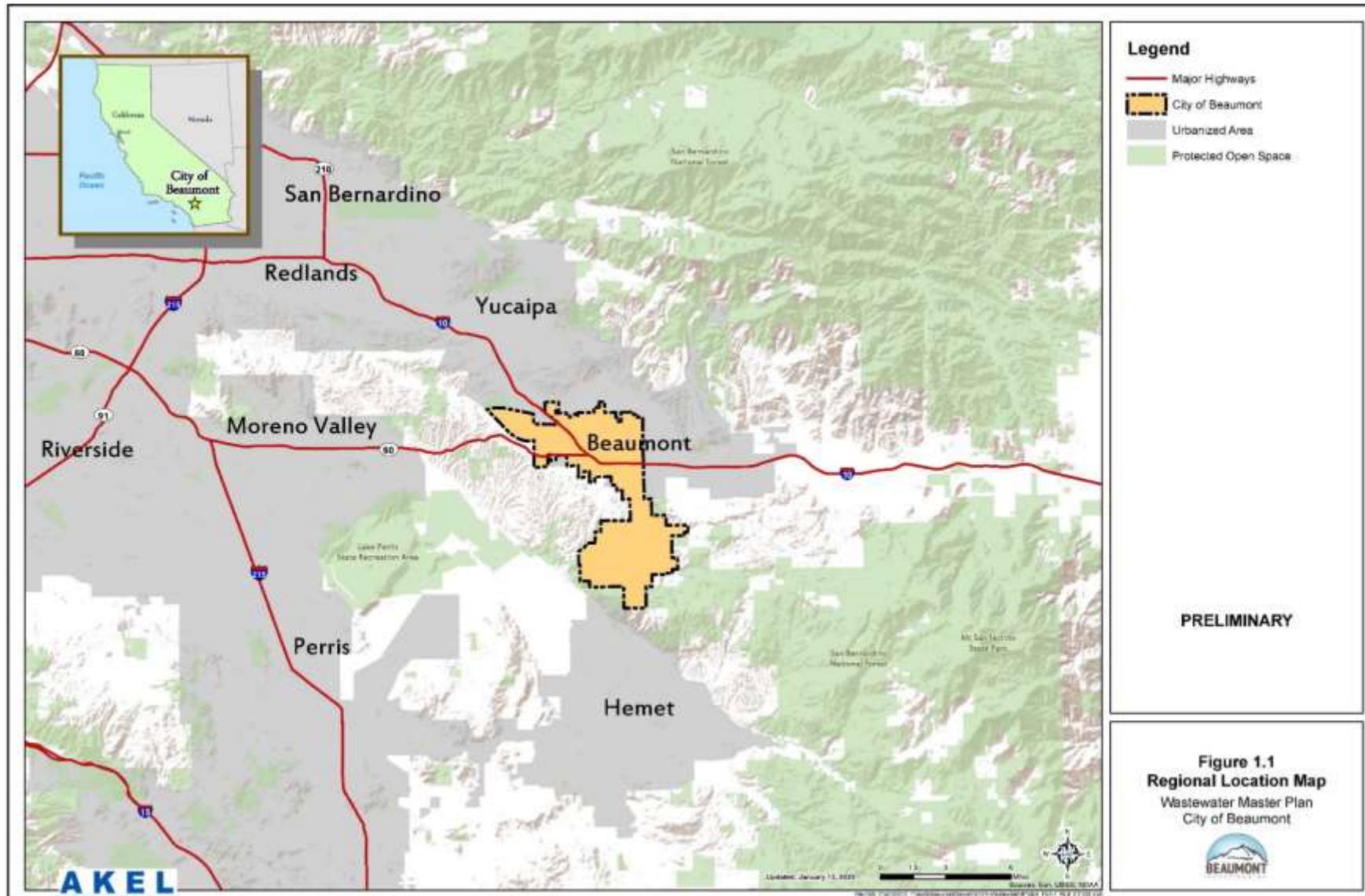
The purpose of this chapter is to introduce the **master plan objectives**.

Key Chapter Elements

- Regional Location Map
- WWMP Objectives
- Definitions
- Abbreviations
- Report Organization

Regional Location Map

Item 1.



Objectives of the WWMP

Objective	Description
Characterize Planning Area (Existing Customers, Sewer Flows, Land Use for Future Developments)	How much sewer flows from existing customers? What lands are expected to develop within the planning horizon?
Develop and Calibrate GIS-based Hydraulic Model	The Model is an accurate tool for evaluating the capacity adequacy of pipelines and lift stations. How much flows are generated by Basin?
Evaluate existing pipelines and lift stations system capacities	Do we meet an adequate Level of Service?
Recommend improvements to mitigate existing pipe deficiencies	What improvements are needed to meet an adequate Level of Service?
Perform Lift Station Field Review	We rely on lift stations. What is the overall lift stations structural condition?
Required improvements to service growth	What improvements are required from future developments
Develop Capital Improvement Program (CIP)	How much do the improvements Cost (Existing Users and Future Developments)

Chapter 2 – Planning Area Characteristics

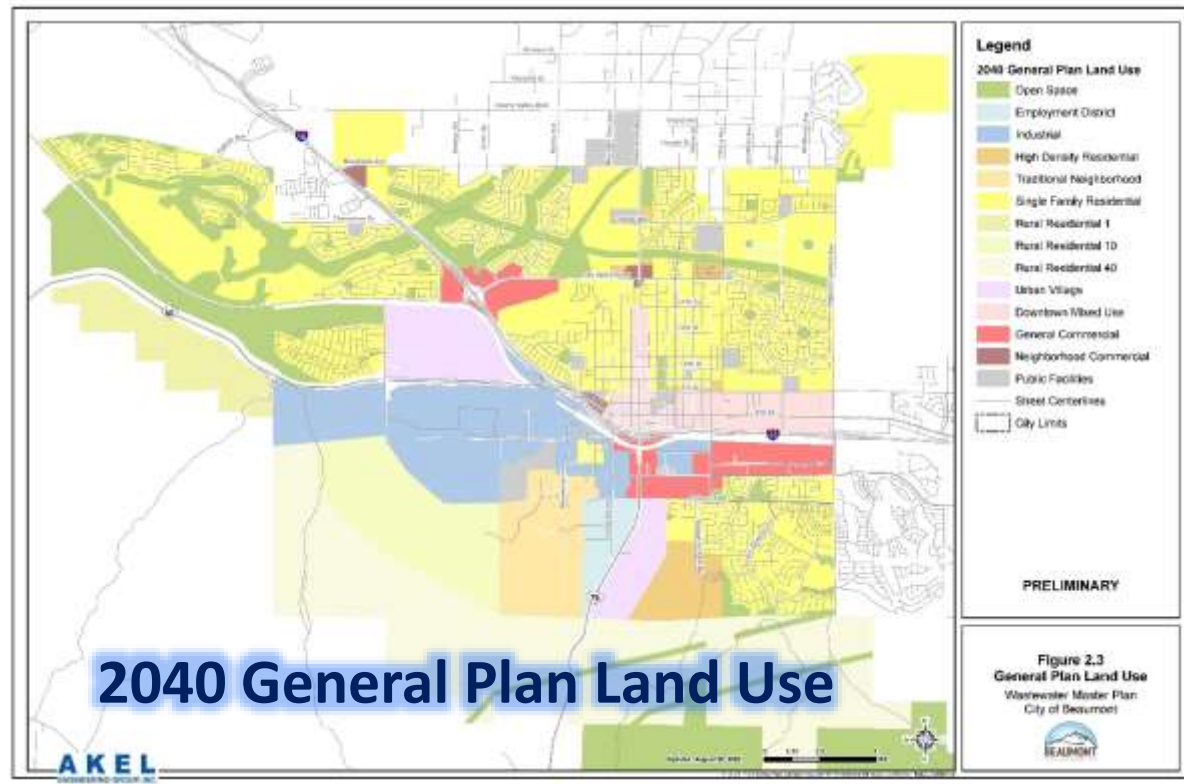
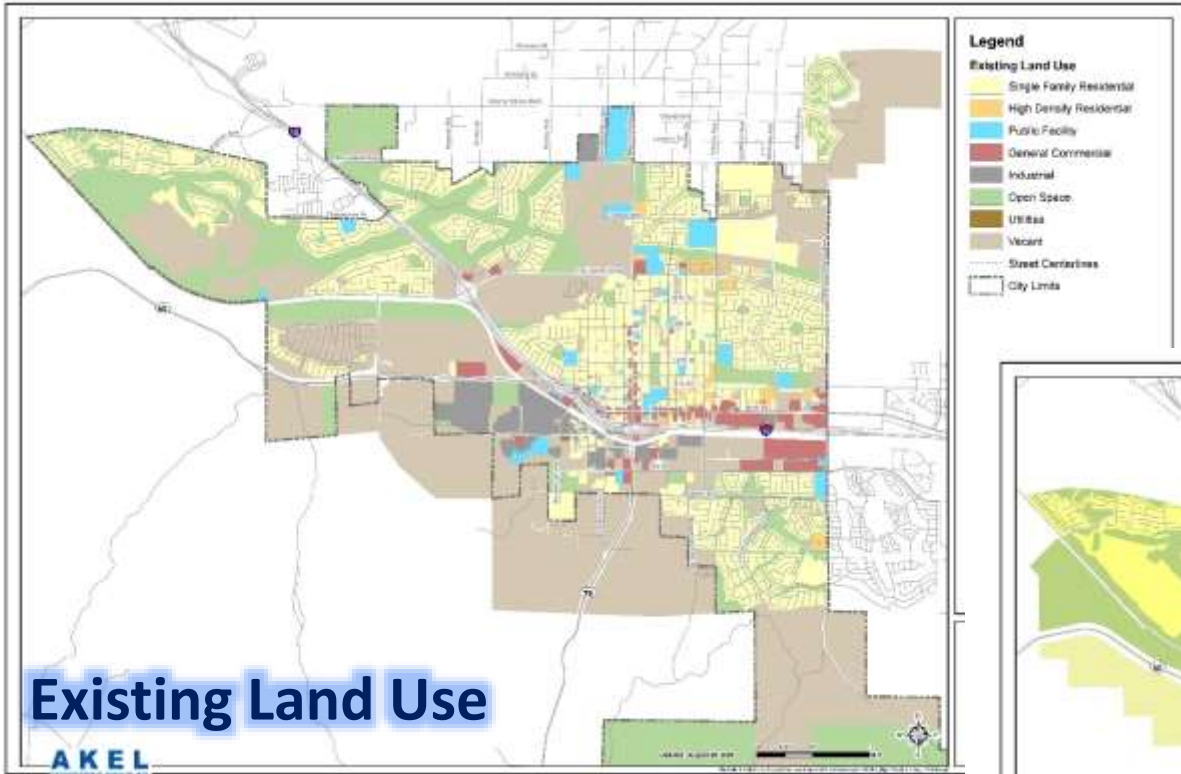
Purpose of Chapter

The purpose of this chapter is to summarize the City's **service area**, including existing and future **land use** and **population**.

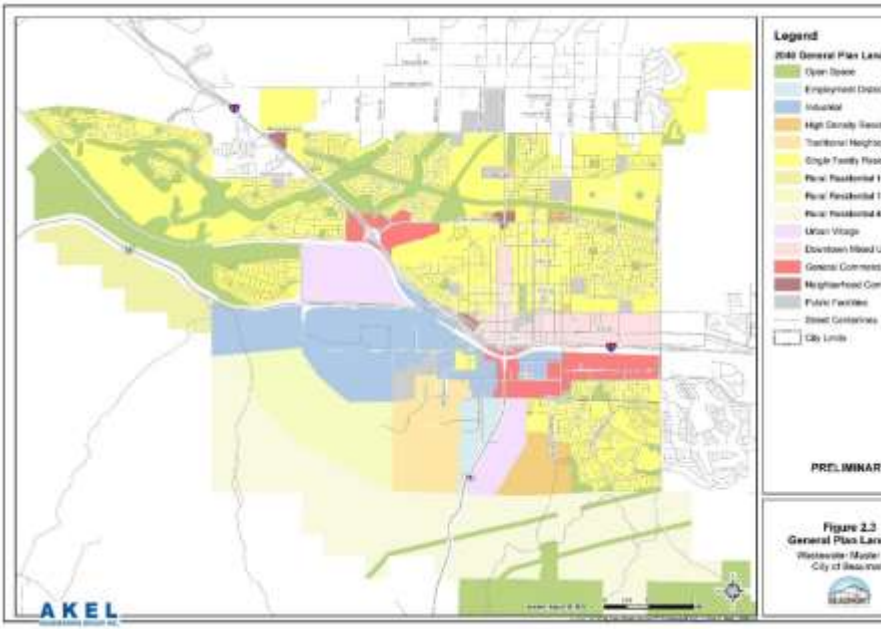
Key Chapter Elements

- Service Area
- Existing Land Use
- General Plan Land Use
- Land Use Inventory
- Specific Plans
- Population

Beaumont Land Use and Sewer System Service Area



Land Use Inventory

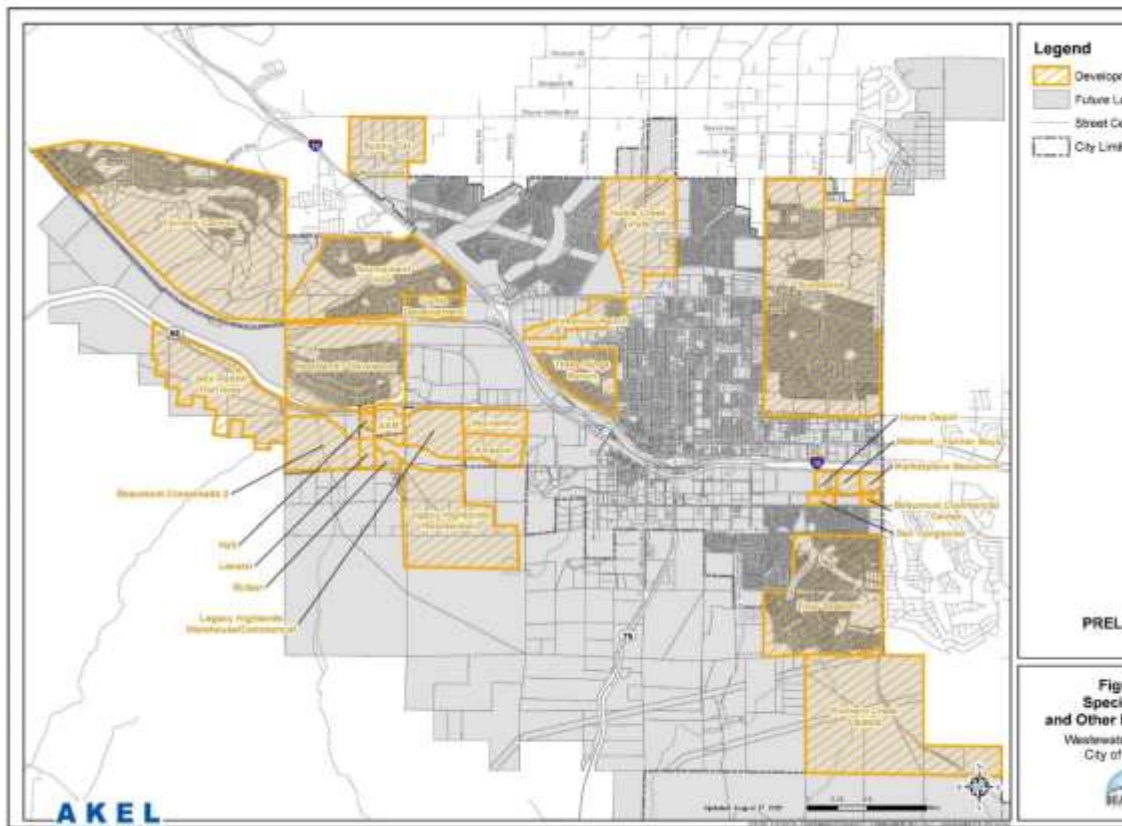


General Plan Land Use Classification ¹	Existing Land Use Classification ²	Existing Development			Future Development			Item 1. Development
		Existing Development	Existing Lands - Redeveloping	Subtotal Existing Development - Unchanged	New Lands - Redevelopment	New development	Subtotal Future Development	
		(acre) 3	(acre) 4	(acre) 5	(acre) 6	(acre) 7	(acre) 8	
Residential								
Single Family Residential	Single Family Residential Mobile Homes and Trailer Parks Mixed Residential	2,568	-178	2,389	118	588	706	3,096
High Density Residential	Multi-Family Residential	134	-51	83	6	276	282	364
Rural Residential	Rural Residential	0	0	0	2,446	312	2,758	2,758
Traditional Neighborhood	-	0	0	0	76	499	574	574
	Subtotal - Residential	2,701	-229	2,472	2,645	1,676	4,321	6,793
Non-Residential								
General Commercial	Commercial and Services General Office	389	-147	242	28	324	352	595
Neighborhood Commercial	-	0	0	0	34	11	46	46
Industrial	Industrial	280	-69	211	52	315	367	577
Public Facility	Facilities Education	293	-13	280	44	64	107	388
Downtown Mixed Use	-	0	0	0	321	64	386	386
Urban Village	-	0	0	0	107	536	643	643
Employment District	-	0	0	0	0	179	179	179
Specific Plans and Other Developments	-	0	0	0	0	4,200	4,200	4,200
	Subtotal - Non-Residential	962	-229	733	586	5,693	6,280	7,013
Non-Flow Generating								
Open Space	Open Space and Recreation Agriculture	8,533	-221	8,312	0	28	28	8,341
Vacant	Vacant	2,934	0	2,934	0	0	0	2,934
Utilities	Utilities	4	0	4	0	0	0	4
ROW	ROW	155	0	155	0	0	0	155
	Subtotal - Non-Flow	11,626	-221	11,405	0	28	28	11,433
	Total Developed Area	15,289	-679	14,610	3,231	7,397	10,628	15,289

Notes:

1. Source: City of Beaumont Public Draft General Plan (2020)
2. Source: Southern California Association of Governments (SCAG) 2016 Existing Land Use file extracted from City of Beaumont Planning Viewer online web application.

Specific Plan Land Use Inventory



Known Developments	Total Development Area, by Land Use Type ¹					Total
	Single Family Residential (acres)	Multi-Family Residential (acres)	Commercial (acres)	Industrial (acres)	Public Facilities (acres)	
Amazon	-	-	-	65.7	-	65.7
ASM	-	-	-	49.3	-	49.3
Beaumont Commercial Center	-	-	17.4	-	-	17.4
Beaumont Crossroads II	-	-	-	165.5	-	165.5
Curtis Development	66.7	-	-	-	-	66.7
Fairway Canyon	660.9	-	12.0	-	30.0	702.9
Four Seasons	365.3	3.3	17.0	-	-	385.6
Hall	-	-	-	11.2	-	11.2
Heartland/Olivewood	207.6	-	11.5	50.3	9.2	278.6
Home Depot	-	-	21.8	-	-	21.8
Jack Rabbit Trail	-	-	30.0	225.0	-	255.0
Kirkwood Ranch	123.0	5.0	-	-	-	128.0
Lassen	-	-	-	17.3	-	17.3
Legacy Highlands Residential	541.4	71.3	-	-	20.0	632.7
Legacy Highlands Warehouse	-	-	14.0	92.0	-	106.0
Marketplace Beaumont	-	-	17.4	-	-	17.4
Noble Creek Vistas	181.2	-	-	-	32.6	213.8
Portrero Creek Estates ²	733.0	-	-	-	-	733.0
Ricker	-	-	-	18.0	-	18.0
San Gorgaonio	-	-	23.0	-	-	23.0
Sundance	874.4	39.0	14.0	-	39.0	966.3
Sunny Cal	112.1	-	-	-	-	112.1
Three Rings Ranch	143.2	10.0	-	-	-	153.2
Tournament Hills	305.4	-	34.4	-	10.0	349.8
Walmart - Farmer Boys	-	-	22.7	-	-	22.7
Wolverine	-	-	-	60.0	-	60.0
Total	4,314	129	235	754	141	5,573

Item 1.



Notes:

1. Unless noted otherwise, development information shown based on planning documents provided by City staff on November 25, 2019 and December 5, 2019.
2. Source: City of Beaumont General Plan Public Draft, August 2020

Service Area Population

- Historical and projected populations documented for informational purposes
- Population of **67,144** by **2038** (Based on City Staff projections)

Year	Population	Percent Growth
	City-Wide	(%)
Historical		
2007	28,250	10.9%
2008	31,317	10.9%
2009	32,403	5.3%
2010	36,877	5.3%
2011	38,201	5.3%
2012	39,317	5.3%
2013	40,472	5.3%
2014	41,659	3.6%
2015	43,370	3.6%
2016	44,821	3.6%
2017	46,179	3.6%
2018	48,237	3.6%
Projected		
2019	49,915	2.3%
2020	51,263	2.3%
2021	52,291	2.3%
2022	53,061	2.3%
2023	53,950	2.3%
2024	54,463	1.8%
2025	55,234	1.8%
2026	56,261	1.8%
2027	57,416	1.8%
2028	58,947	1.8%
2029	59,974	1.3%
2030	60,745	1.3%
2031	61,258	1.3%
2032	61,772	1.3%
2033	62,917	1.3%
2034	63,816	1.3%
2035	64,715	1.3%
2036	65,485	1.3%
2037	66,127	1.3%
2038	67,144	1.3%

Item 1.

Chapter 3 – System Performance and Design Criteria



Purpose of Chapter

The purpose of this chapter is to discuss City's **wastewater system performance and design criteria.**

Key Chapter Elements

- System Performance and Design Criteria
- Wastewater Unit Factor Analysis
- Wastewater Diurnal Pattern

Criteria is consistent with **Eastern Municipal Water District**

System Performance and Criteria

Criteria consistent with
Eastern Municipal Water District



Item 1.

Dry Weather Flow Criteria (EMWD Wastewater Criteria)	
Sewer Trunk	d/D
Diameter < 15 inches	0.50
Diameter ≥ 15 inches	0.70

Wet Weather Flow Criteria (EMWD Wastewater Criteria)	
Sewer Trunk	d/D
Existing System	1.00
Future System	0.75

Pipe Slope Criteria (EMWD Wastewater Criteria)	
Pipe Size	Minimum Slope (ft/ft)
8"	0.004
10"	0.0032
12"	0.0024
15"	0.0016
18"	0.0014
21"	0.0012
24" and Up	0.001

Pipe Velocity Criteria (EMWD Wastewater Criteria)	
Pipe Type	Minimum / Maximum Velocity (fps)
Gravity Sewer	Minimum 2 / Maximum 10
Force Main	Desired 2 to 6.5 / Maximum 10

1. Source: Eastern Municipal Water District Wastewater Collection System Master Plan
2. Wastewater Collection System performance criteria shall be in accordance with EMWD WCSMP.

Wastewater Unit Factor Analysis

Land Use Classification	Existing Development (acre)	2017 Average Daily Water Demand Unit Factors		2017 Average Dry Weather Sewer Flow Unit Factors								
		2017 Water Consumption ¹		Return to Sewer Ratio	Dry Weather Sewer Flows		Sewer Flows at 100% Occupancy		Sewer Unit Factor			
		Annual Consumption (gpd)	Unadjusted Water Unit Factors (gpd/acre)		Unadjusted Sewer Unit Factor (gpd/acre)	Balance using Recommended Unit Factor (gpd)	Vacancy Rate ^{2,3}	Projected Flows at 100% Occupancy (gpd)	ADWF Factor (gpd/acre)	Balance Using ADWF Factor (gpd)		
Residential												
Single Family Residential ⁴	2,568	5,432,317	2,116	0.50	1,064	2,732,455	10.0%	1,171	3,005,701	1,200	3,081,236	
Multi-Family Residential	134	315,111	2,358	0.70	1,660	221,838	10.0%	1,826	244,022	1,850	247,193	
Subtotal Residential	2,701	5,747,428				2,954,294			3,249,723		3,328,429	
Non-Residential												
Commercial and Services ³	389	413,338	1,062	0.85	903	351,337	2.0%	921	358,364	925	360,038	
Public Facilities ⁵	293	286,703	979	0.85	832	243,698	2.0%	849	248,572	850	248,974	
Industrial ⁷	223	130,310	585	0.85	497	110,764	0.2%	498	110,985	500	111,360	
Subtotal Non-Residential	905	830,351				705,798			717,921		720,372	
Totals												
	3,606	6,577,779				2017 Average Dry Weather Flows						
						Estimated Sewer Flows			3,967,644		4,048,800	
						Measured WWTP Flows ⁸					3,662,673	

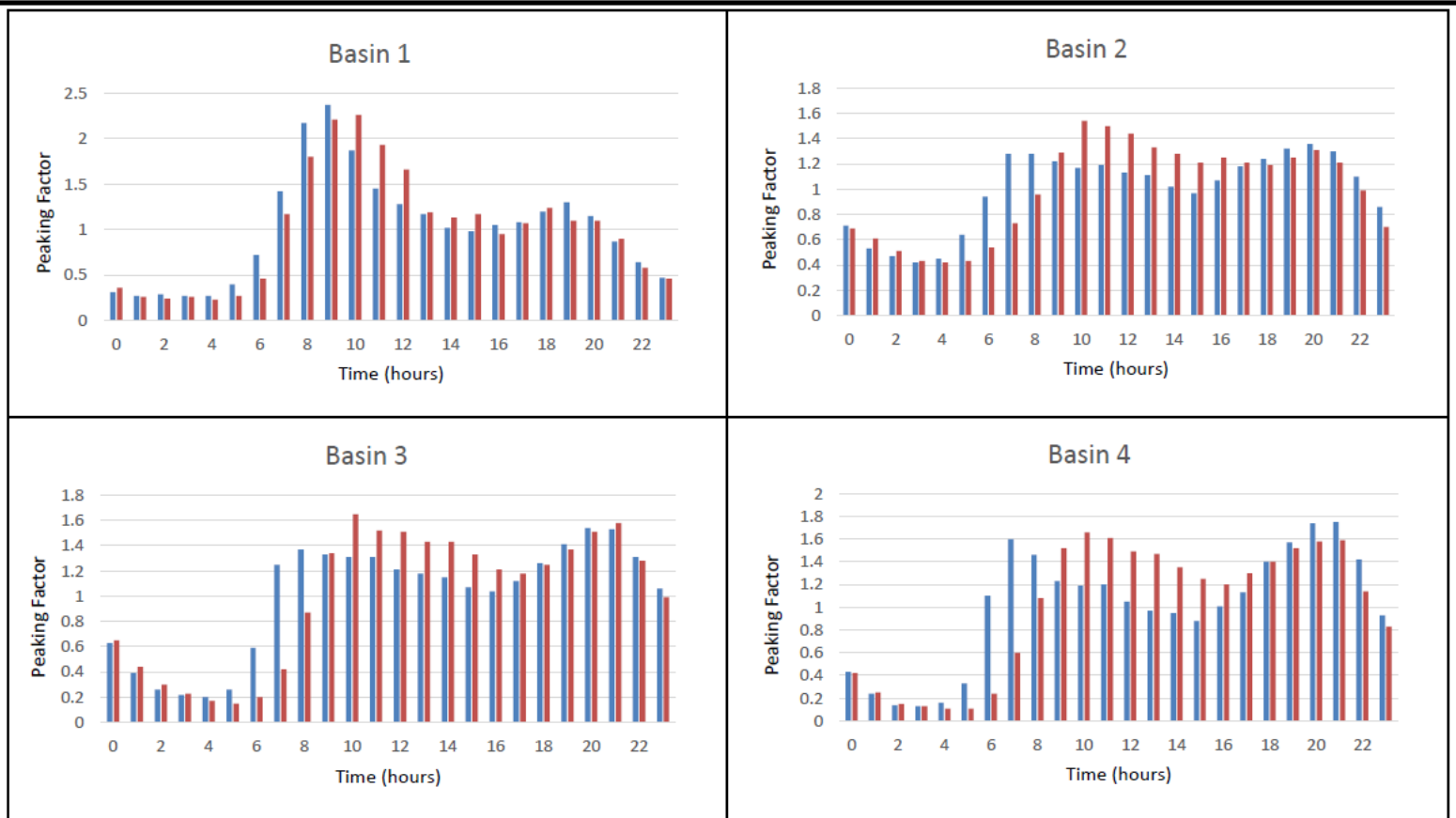


Notes:

1. Water consumption extracted from water billing data received from City staff November 21, 2019.
2. Residential vacancy rate extracted from California Department of Finance E-5 Population estimates.
3. Office Commercial and Industrial vacancy rates extracted from "Beaumont Economic Development Strategic Plan". For planning purposes, Business Commercial vacancy rate assumed equal to Office Commercial.
4. "Single Family Residential" contains development and consumption for "Mobile Homes and Trailer Parks".

8/24/2020

Characterizing WW Flows



Shows hourly variations in wastewater flow

Developed from flow monitoring data.

LEGEND
█ Weekday Dry Weather Flow Diurnal
█ Weekend Dry Weather Flow Diurnal

Note: Detailed flow monitor locations provided in Appendix A

PRELIMINARY

Figure 3.1
Hydraulic Model Diurnals
 Wastewater Master Plan
 City of Beaumont



February 16, 2021

Chapter 4 – Existing Wastewater Collection Facilities

Purpose of Chapter

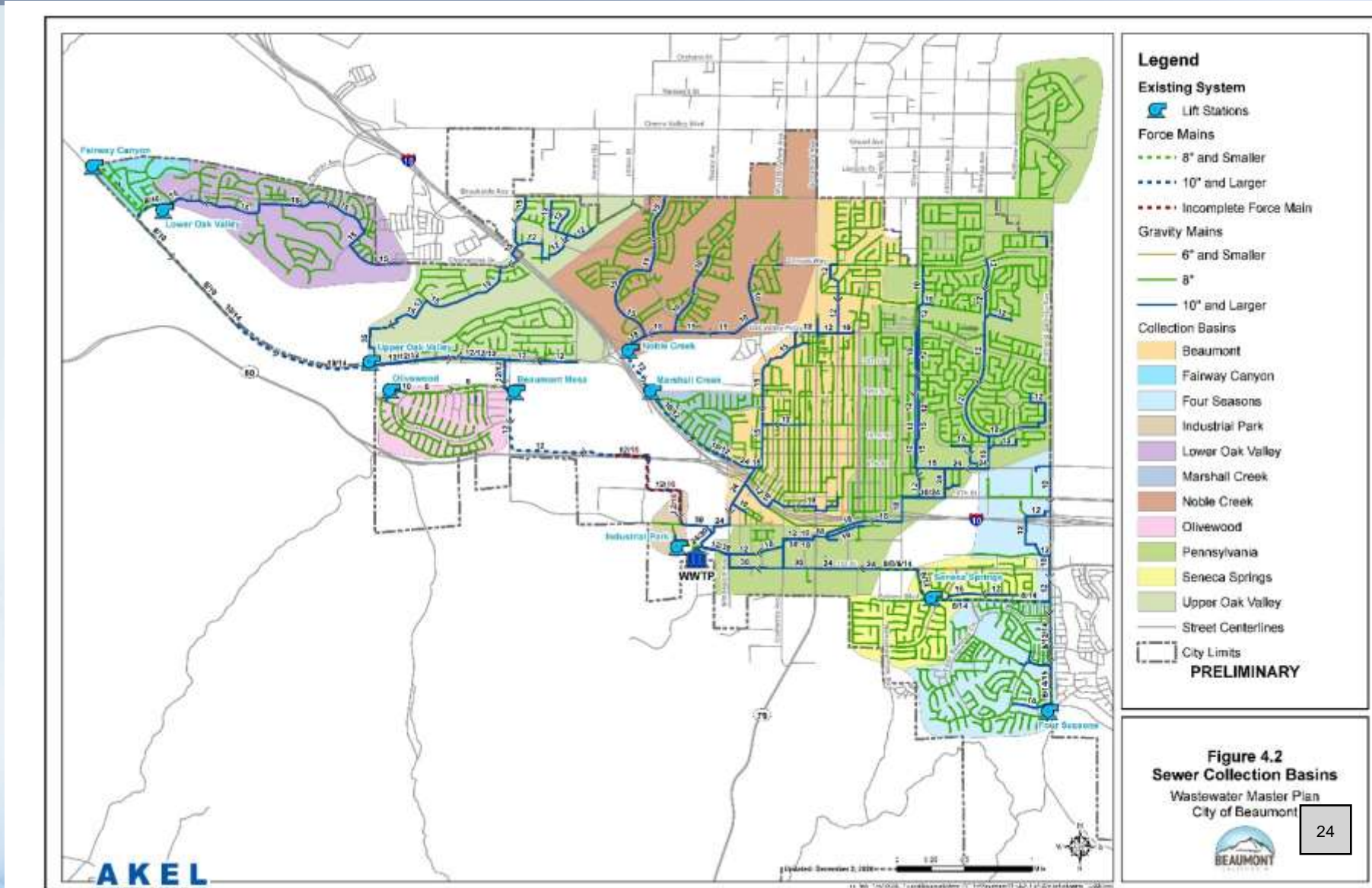
The purpose of this chapter is to discuss City's **existing wastewater system**.

Key Chapter Elements

- Existing Pipelines Inventory
- Lift Station Inventory

Existing Wastewater Collection System

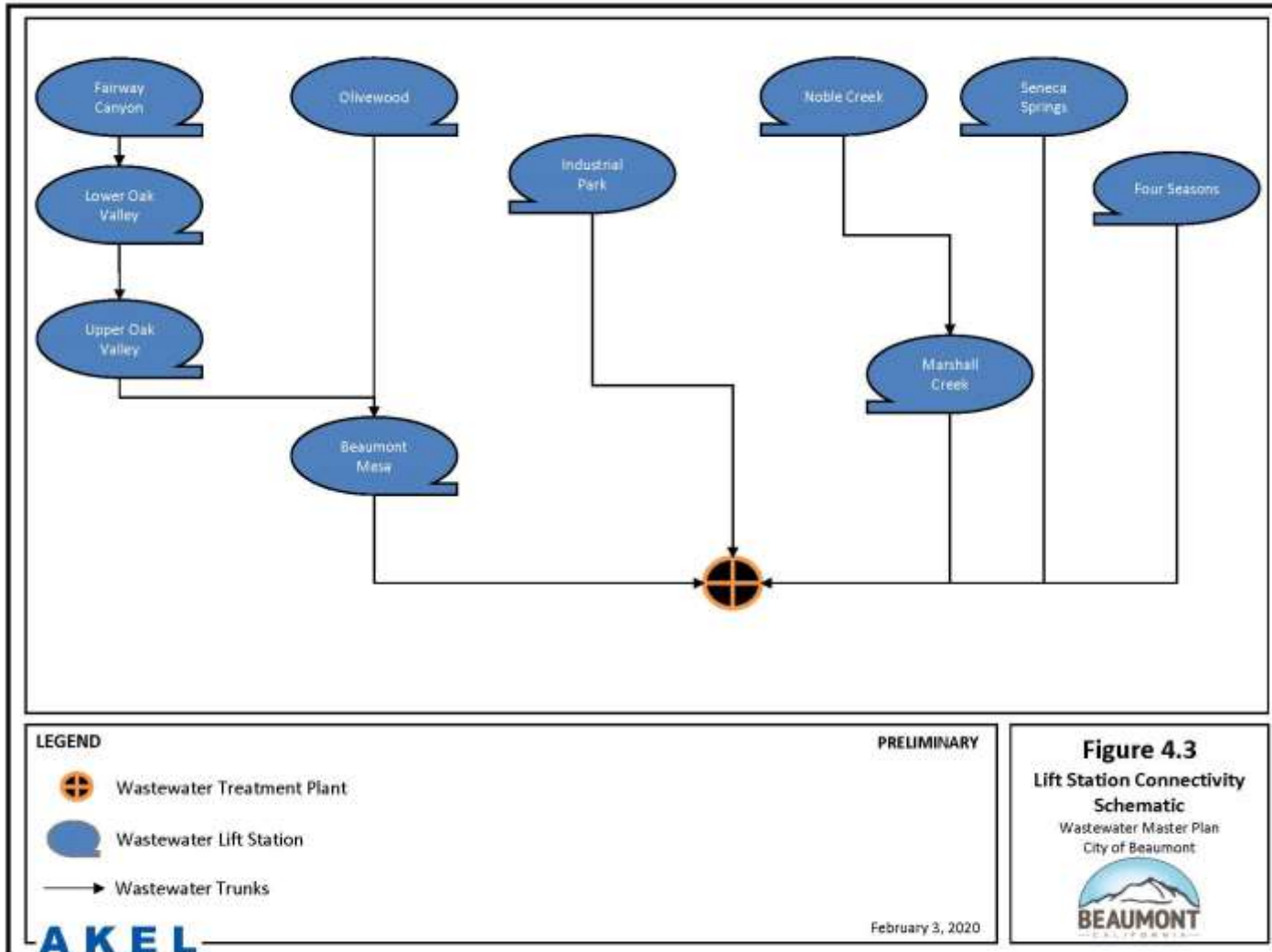
- 177 miles of Gravity Sewers
- 19 miles of Force Main
- 10 Lift Stations
- 1 Wastewater Treatment Plant



Existing System Pipeline Inventory

Pipeline Diameter (in)	Length		Percent Contribution % Total
	(ft)	(mi)	
Gravity Mains			
4	883	0.2	0.1%
6	2,612	0.5	0.3%
8	759,884	143.9	73.4%
10	28,526	5.4	2.8%
12	59,788	11.3	5.8%
15	48,929	9.3	4.7%
16	1,898	0.4	0.2%
18	7,782	1.5	0.8%
24	13,012	2.5	1.3%
30	8,890	1.7	0.9%
48	222	0.04	0.02%
Unknown	226	0.04	0.02%
Subtotal - Gravity Mains	932,653	176.6	90.1%
Force Mains			
6	1,060	0.2	0.1%
8	33,208	6.3	3.2%
10	17,254	3.3	1.7%
12	31,787	6.0	3.1%
14	18,776	3.6	1.8%
Subtotal - Force Mains	102,086	19.3	9.9%
Total Sewer Pipe			
Total	1,034,739	196.0	100.0%

Lift Station Connectivity Schematic



Lift Station Inventory

Lift Station Information		Pumps ¹				Pump Controls ²						Wet Well Dimensions ²		
No.	Location	Quantity	Full Capacity (gpm)	Firm Capacity (gpm)	Current Capacity (gpm)	High Level (ft)	Low Level (ft)	Lead On (ft)	Lag 1 Off (ft)	Lag 2 On (ft)	Lag 2 Off (ft)	Area (ft ²)	Depth (ft)	Volume (gal)
Beaumont Mesa	12940 Potrero Blvd.	2 @ 1,797 gpm	3,594	1,797	3,594	21.50	2.00	9.50	7.00	12.00	7.00	697.4	21.0	109,593
Fairway Canyon ³ (Little Lower Oak Valley)	34003 Crenshaw St.	2 @ 400 gpm	800	400	800	8.33	2.92	6.61	3.58	7.83	6.61	50.3	11.50	2,022
Lower Oak Valley	11246 Palmer Ave.	2 @ 650 gpm 1 @ 400 gpm	1,700	1,050	1,700	7.50	1.50	4.00	2.00	7.00	2.00	212.7	16.5	26,252
Marshall Creek	990 Ring Ranch Rd.	2 @ 1,150 gpm	2,300	1,150	2,300	10.75	8.08	9.75	8.25	10.50	8.25	223.9	18.0	30,149
Noble Creek	1899 W Oak Valley Pkwy.	2 @ 1,865 gpm	3,730	1,865	3,730	6.00	1.50	4.25	2.00	5.75	2.00	180.8	14.5	19,606
Seneca Springs	1390 Potrero Blvd.	3 @ 450 gpm	1,350	900	1,125	6.00	1.25	4.50	2.50	5.50	2.50	184.7	31.50	43,519
Upper Oak Valley	35980 Oak Valley Pkwy.	2 @ 1,350 gpm 1 @ 2,300 gpm	5,000	2,700	5,000	7.50	1.00	4.50	2.50	7.00	2.50	345.7	19.5	51,283
Four Seasons	1075 S Highland Springs Ave.	2 @ 1,675 gpm 1 @ 365 gpm	3,715	1,740	1,675	9.50	1.50	4.75	2.25	9.00	4.75	249.6	22.0	41,078
Industrial Park ⁴ (Coopers Creek)	715 W 4th St.	1 @ 112 gpm 1 @ 150 gpm	262	112	262	6.00	1.00	5.75	2.00	5.75	2.00	58.7	16.0	7,022
Olivewood	North of Artisan Pl.	2 @ 310gpm	620	310	620	6.25	2.00	5.25	3.00	5.75	3.00	50.3	19.5	7,332



Notes:
 1. Source: Pumps information provided by City staff on December 13, 2019.
 2. Unless noted otherwise, pump controls and wet well dimensions provided by City staff on March 04, 2020.
 3. Fairway Canyon wet well dimensions provided by City staff on April 28, 2021.

Chapter 5 – Wastewater Flows



Purpose of Chapter

The purpose of this chapter is to summarize **historical wastewater flows** at City's WWTP and **project flows for future growth**.

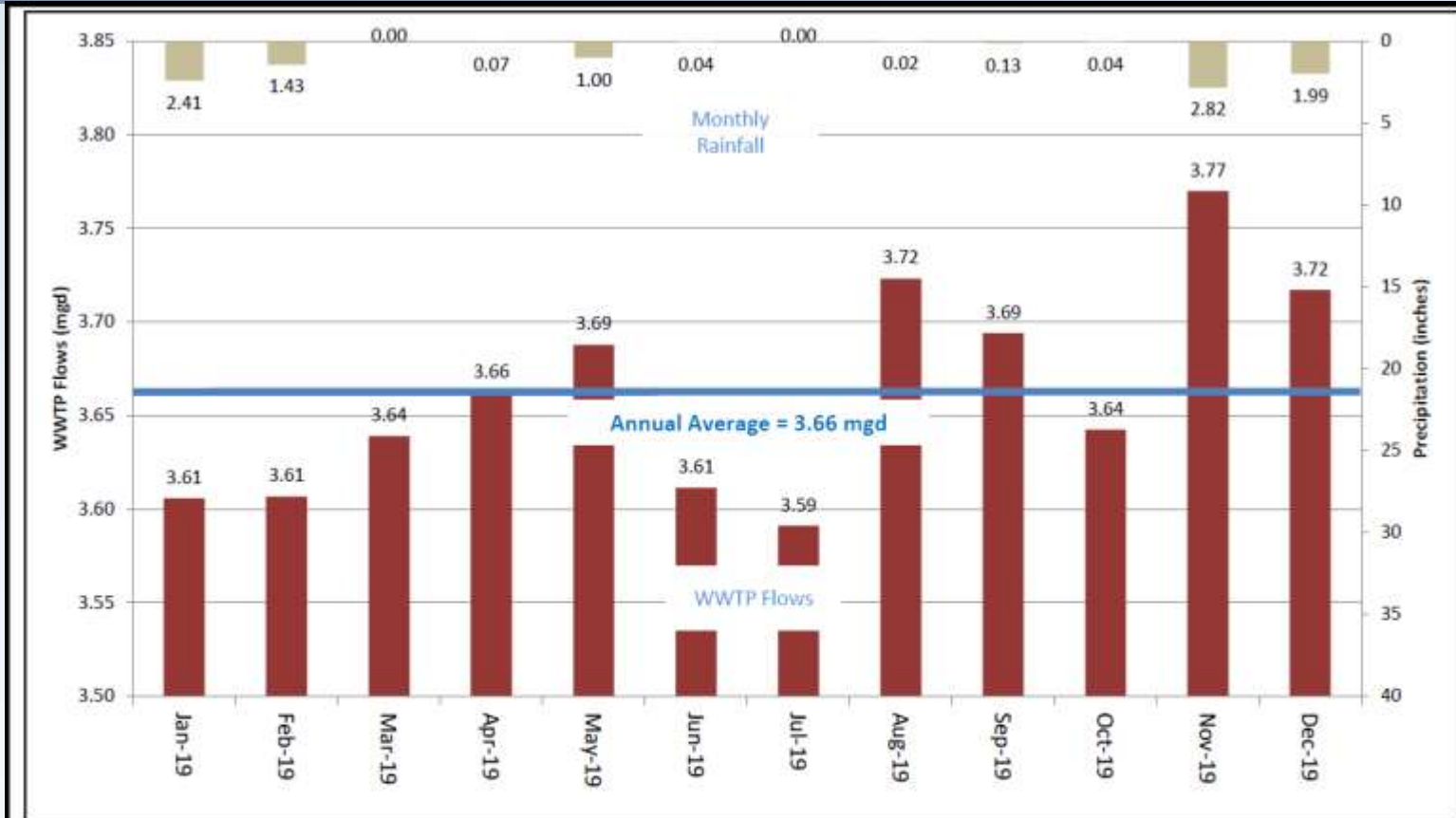
Key Chapter Elements

- Historical Flow Summary
- Buildout Wastewater Flows

2019 WWTP Flows (January-December)

Highest months are August and November.

November high flows due to Wet weather flows



LEGEND

- Monthly Flows
- Monthly Rainfall
- 2019 Average Flow

Note: WWTP Flow data provided by City staff on February 18, 2020.
- Rainfall data extracted from CIMIS Station in Hemet (Year 2019)

PRELIMINARY

Figure 5.1
2019 WWTP Flows
Wastewater Master Plan
City of Beaumont



Historical Wastewater Flows Data

- 3.66 mgd is the average flow
- 1.33 times higher than average during maximum day dry weather
- 1.88 times higher than average during maximum day wet weather

Year	Average Annual Flow (AAF) (mgd)	Percentage Change	Seasonal Average		Maximum Month		Maximum Day	
			ADWF ¹ (mgd)	AWWF ² (mgd)	MMDWF (mgd)	MMWWF (mgd)	MDDWF (mgd)	MDWWF (mgd)
2012	2.68		2.70	2.67	2.74	2.80	3.12	3.18
2013	2.79	3.9%	2.68	2.90	2.82	3.12	3.40	3.50
2014	2.98	6.9%	2.97	2.99	3.02	3.19	3.50	3.62
2015	2.92	-1.8%	2.91	2.94	2.97	3.05	3.86	3.58
2016	2.83	-3.4%	2.80	2.86	2.91	3.29	3.27	5.26
2017	3.27	15.8%	-	-	-	-	-	-
2018	3.39	3.7%	3.40	3.38	3.51	3.51	-	-
2019	3.66	8.0%	3.66	3.67	3.72	3.77	4.14	5.07
2020	-	-	-	-	-	4.01	-	4.57

Item 1.

Historical Peaking Factors (Applied to ADWF)

2012	1.00	1.00	0.99	1.02	1.04	1.16	1.18
2013	1.04	1.00	1.08	1.05	1.17	1.27	1.31
2014	1.00	1.00	1.01	1.02	1.07	1.18	1.22
2015	1.00	1.00	1.01	1.02	1.05	1.33	1.23
2016	1.01	1.00	1.02	1.04	1.18	1.17	1.88
2017	-	-	-	-	-	-	-
2018	1.00	1.00	0.99	1.03	1.03	-	-
2019	1.00	1.00	1.00	1.02	1.03	1.13	1.39
2020	-	-	-	-	-	-	-

Recommended Evaluation Peaking Factor

			1.08	1.05	1.18	1.33	1.88
--	--	--	------	------	------	------	------

AKEL
ENGINEERING GROUP, INC.

Notes :

1. Source: 2012-2016 WWTP flows extracted from the City of Beaumont 2017 Inflow and Infiltration Study.
2. Source: 2017-2019 City Flow data provided by City staff on February 18, 2020.
3. Source: Hourly influent flows at the WWTP for the period of 02/20/20 to 04/09/20 provided by City staff on May 1, 2020.

2/3/2020

Projected Buildout Wastewater Flows

Land Use Type 1	Existing Development			Future Development within Study Area					Total Development at Buildout of Study Area 10	Total Average Dry Weather Flow	
	Existing Lands, No Redevelopment	Sewer Unit Factor	Average Daily Flow	Lands Planned for Redevelopment	New Development	Subtotal Future Development	Sewer Unit Factor	Average Dry Weather Flow		(gpd)	(gpd)
	(acre) 2	(gpd/acre) 3	(gpd) 4	(acre) 5	(acre) 6	(acre) 7	(gpd/acre) 8	(gpd) 9		(gpd) 11	(gpd) 12
General Plan Residential											
Single Family Residential	2,389	1,396	3,335,391	118	588.3	706	1,396	986,125	3,096	4,321,516	4.32
High Density Residential	83	2,609	215,334	6	276.1	282	2,609	735,343	364	950,677	0.95
Rural Residential	0	611	0	2,446	312.3	2,758	611	1,685,107	2,758	1,685,107	1.69
Subtotal - General Plan Residential	2,472		3,550,725	2,570	1,176.7	3,746		3,406,575	6,218	6,957,301	6.96
General Plan Non-Residential											
General Commercial	242	1,175	284,837	28	323.8	352	1,175	413,753	595	698,590	0.70
Neighborhood Commercial	0	1,175	0	34	11.5	46	1,175	53,539	46	53,539	0.05
Industrial	211	1,763	371,281	52	315.2	367	1,763	646,780	577	1,018,062	1.02
Public Facility	280	800	224,260	44	63.6	107	800	85,932	388	310,191	0.31
Subtotal - General Plan Non-Residential	733		880,378	158	714.0	872		1,200,004	1,605	2,080,381	2.08
General Plan Overlays											
Traditional Neighborhood ¹	0	-	0	76	498.8	574	-	692,049	574	692,049	0.69
Downtown Mixed Use ¹	0	-	0	321	64.4	386	-	578,272	386	578,272	0.58
Urban Village ¹	0	-	0	107	536.0	643	-	1,041,439	643	1,041,439	1.04
Employment District ¹	0	-	0	0	179.1	179	-	216,814	179	216,814	0.22
Subtotal - General Plan Overlays	0		0	504	1,278.4	1,782		2,528,575	1,782	2,528,575	2.53
Known Developments											
Specific Plan and Other Developments ²	0	-	0	0	4,199.7	4,200	-	6,214,824	4,200	6,214,824	6.21
Subtotal - Known Developments	0		0	0	4,199.7	4,200		6,214,824	4,200	6,214,824	6.21
Total											
	3,205		4,431,103	3,231	7,368.8	10,600		13,349,978	13,805	17,781,081	17.78



Notes:
 1. Development flows for Overlay Areas documented in Table 2, General Plan Overlay Development and Flows
 2. Specific Plan and Other Development flows documented in Table 5, Specific Plan and Other Development, Remaining Development Flows

Chapter 6 – Hydraulic Model Development

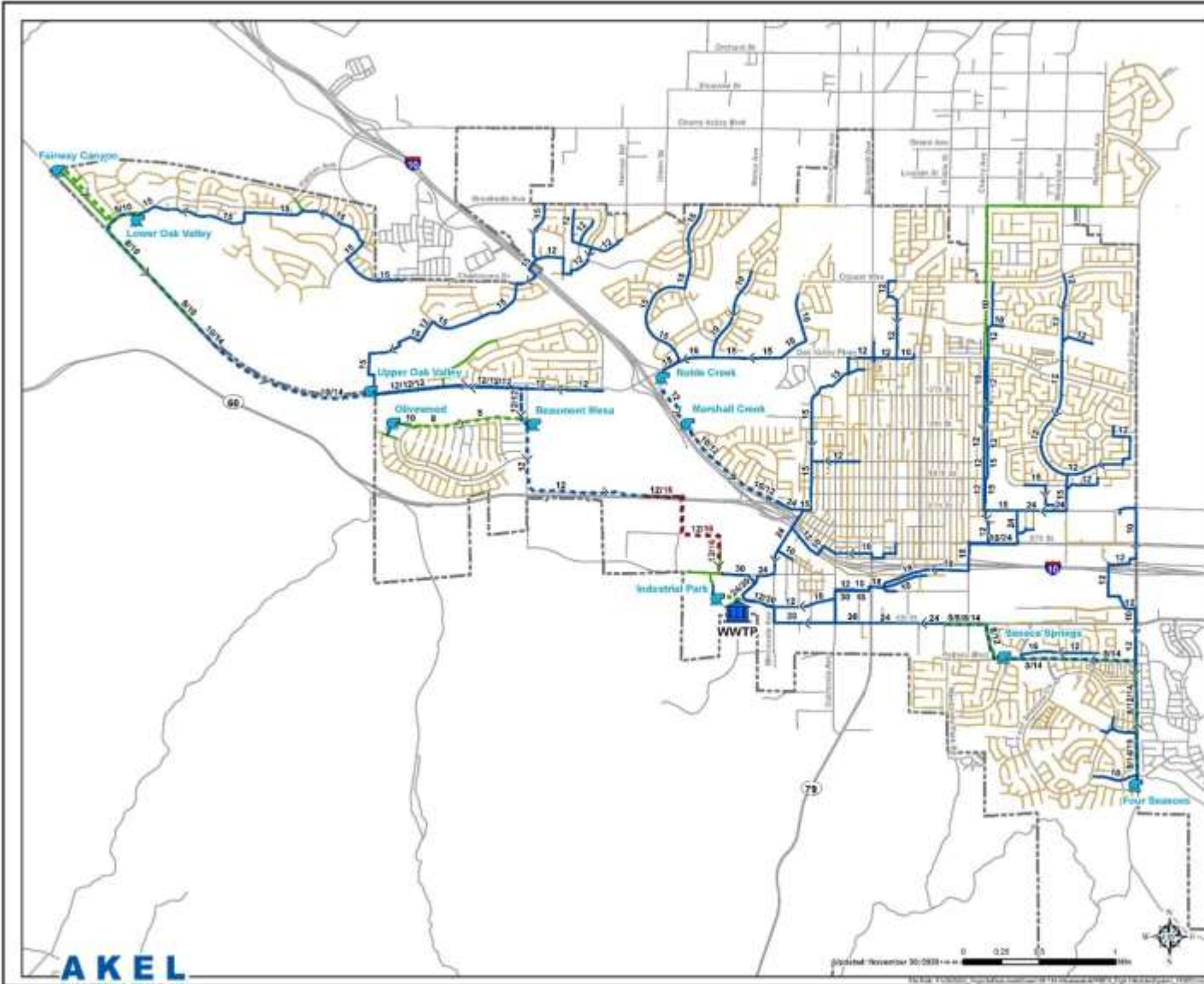
Purpose of Chapter

The purpose of this chapter is to discuss the **hydraulic model development** and **calibration process** of the wastewater collection system.

Key Chapter Elements

- Hydraulic Model Development
- Flow Monitoring Program
- Hydraulic Model Calibration

Existing Modeled WW System



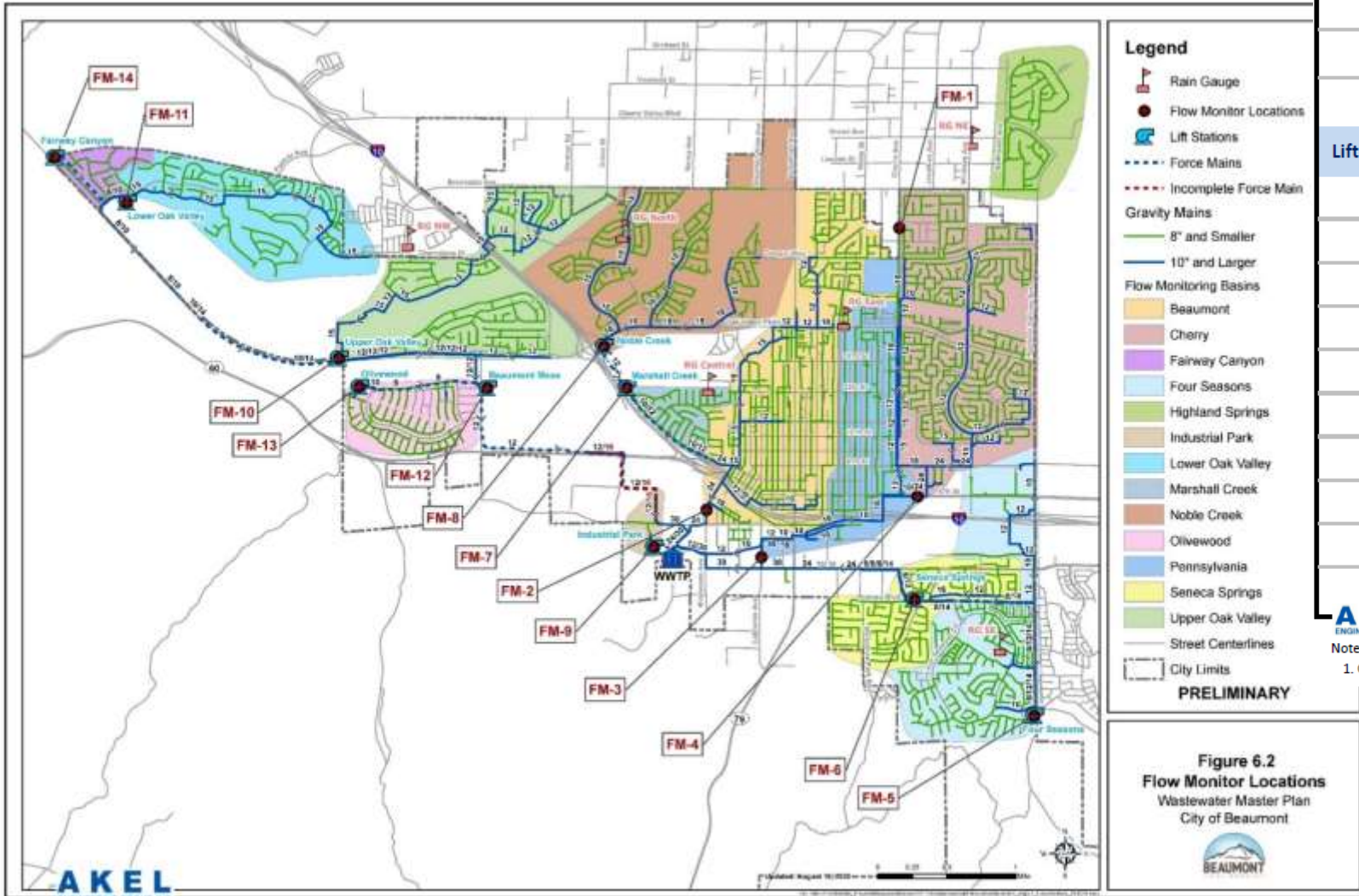
Pipeline Diameter (in)	Length		Percent Contribution %
	(ft)	(mi)	
Gravity Mains			
8	18,847	3.6	6.4%
10	27,947	5.3	9.5%
12	59,569	11.3	20.3%
15	48,834	9.2	16.6%
16	1,898	0.4	0.6%
18	7,829	1.5	2.7%
24	12,336	2.3	4.2%
30	8,890	1.7	3.0%
Subtotal	186,151	35.3	63.4%
Force Mains			
6	1,060	0.2	0.4%
8	33,212	6.3	11.3%
10	17,260	3.3	5.9%
12	31,796	6.0	10.8%
14	18,941	3.6	6.5%
16	5,058	1.0	1.7%
Subtotal	107,327	20.3	36.6%
Total Modeled Pipe			
Total	293,478	55.6	100.0%

Item 1.

33

Flow Monitoring Program

14 Flow Monitoring Site Item 1.



Site ID	Location Description	Pipe Size (in)	Manhole ID
Gravity Main Flow Monitors			
FM-1	Cherry Avenue north of Mary Lane	8" N (In Pipe)	SSMH01048
FM-2	Minnesota Avenue approx 500' north of 4th Street	24" N (In Pipe)	SSMH01728
FM-3	California Avenue approx 400' north of 1st Street	30" N (In Pipe)	SSMH00381
FM-4	6th Street approx 400' west of American Avenue	24" E (In Pipe)	SSMH00330
Lift Station Flow Monitors			
FM-5	1075 South Highland Springs Road	-	LS-1 (Four Seasons)
FM-6	1390 Potrero Boulevard	-	LS-2 (Seneca Springs)
FM-7	990 Ring Ranch Road	-	LS-3 (Marshall Creek)
FM-8	1899 West Oak Valley Parkway	-	LS-4 (Noble Creek)
FM-9	715 West 4th Street	-	LS-5 (Industrial Park)
FM-10	35980 Oak Valley Parkway	-	LS-6 (Upper Oak Valley)
FM-11	11246 Palmer Avenue	-	LS-7 (Lower Oak Valley)
FM-12	34003 Crenshaw Street	-	LS-8 (Beaumont Mesa)
FM-13	12940 Potrero Boulevard	-	LS-9 (Olivewood)
FM-14	Castello Lane approx 450' north of Artisan Place	-	LS-10 (Fairway Canyon)

AKEL
ENGINEERING GROUP, INC.

Notes:

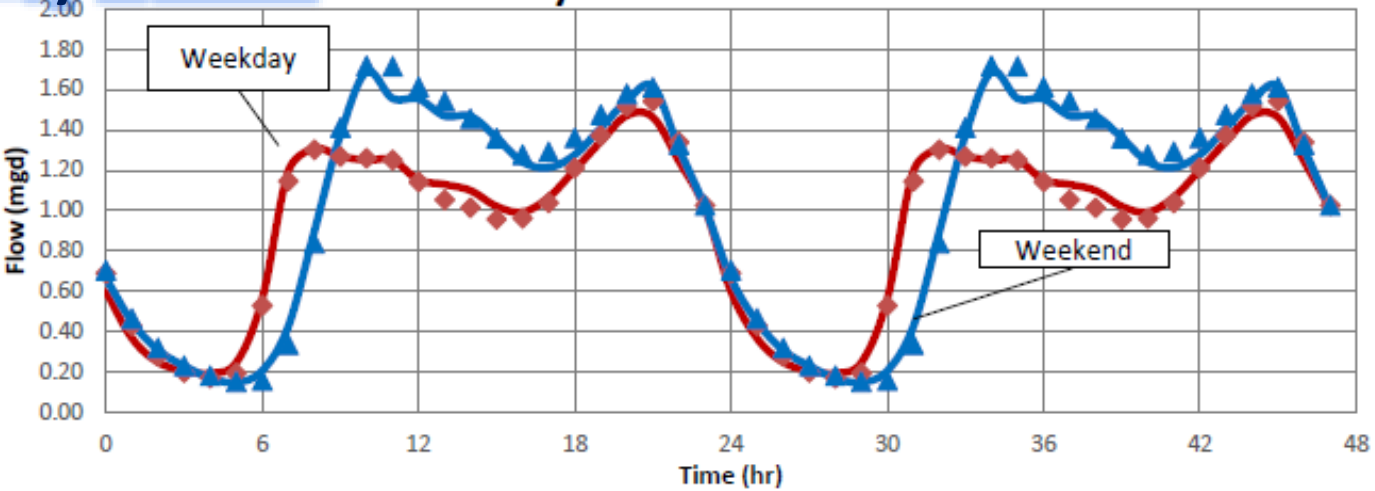
1. GIS Manhole IDs based on GIS shapefiles provided by City staff November 18, 2019.

2/11/202

Hydraulic Model Calibration

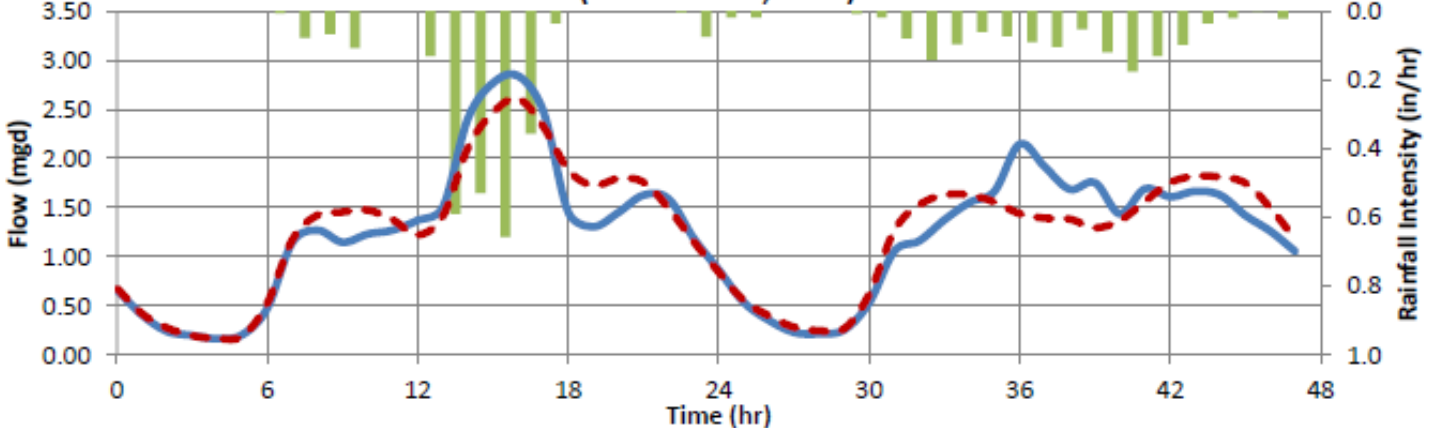
Dry Weather

Dry Weather Event



Wet Weather

Wet Weather Event 1
(March 12-13, 2020)



- Dry and Wet Weather
- Benchmark for future evaluations
- Calibration results were acceptable

Chapter 7 - Hydraulic Evaluation and Proposed Improvements



Item 1.

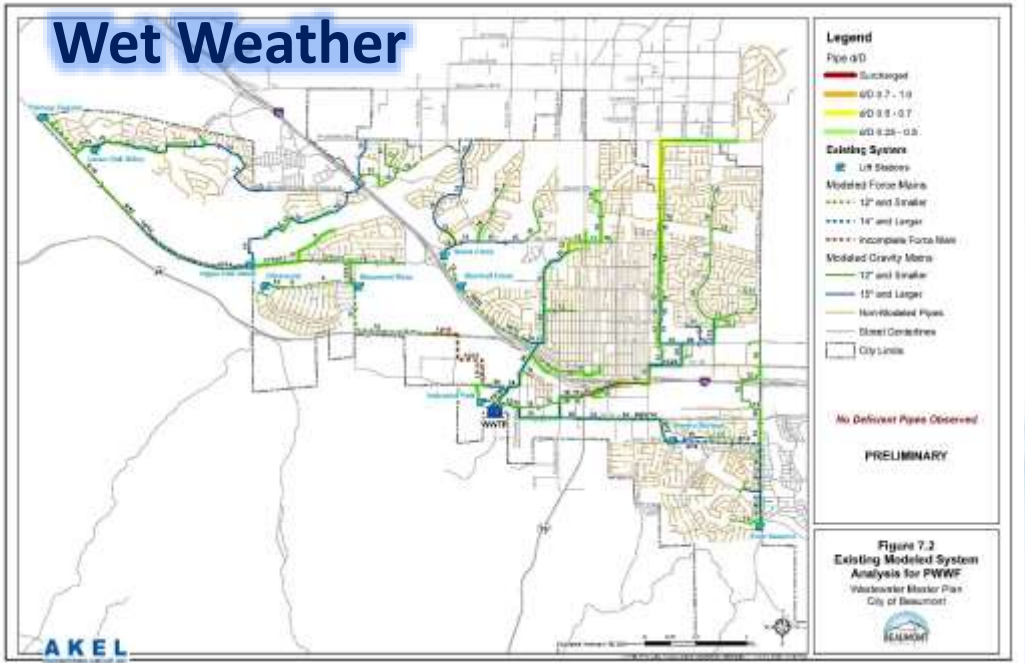
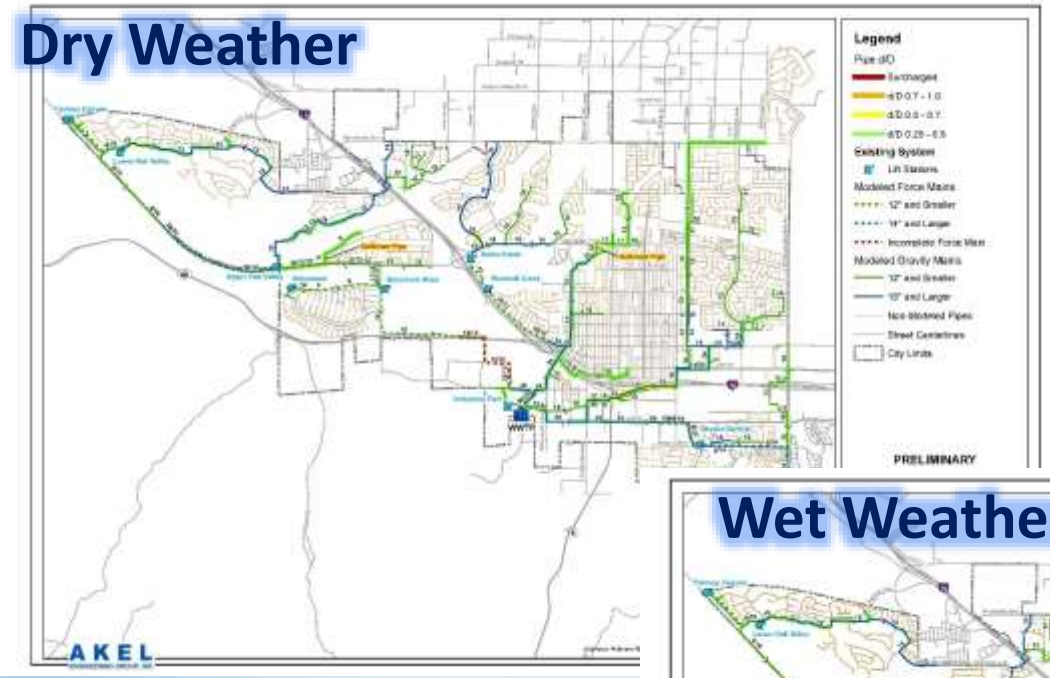
Purpose of Chapter

The purpose of this chapter is to evaluate the **existing wastewater system** and recommend improvements to **mitigate existing deficiencies** and **serve future growth**.

Key Chapter Elements

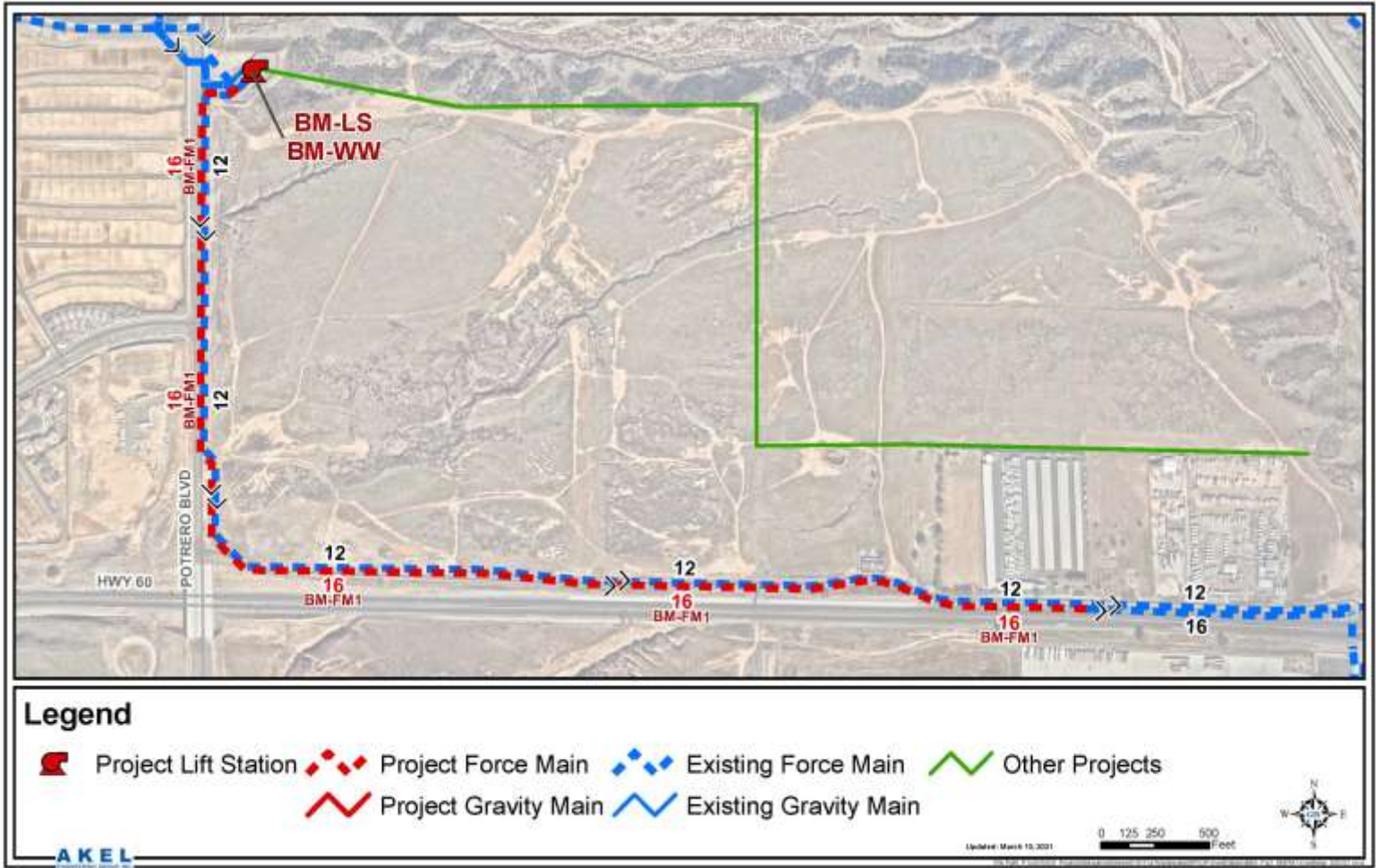
- Existing System Evaluation
- Recommended Improvements
- Future System Evaluation

Existing System Evaluations



- Evaluated for peak dry and wet conditions
- Considered 10-Year 24-Hour Design Storm
- Capacity of Existing Pipelines is Good.

Beaumont Mesa LS Improvements



- Critical Regional Lift Station
- Planned improvements to mitigate deficiencies
 - Replace existing pumps (*undersized*)
 - Complete parallel force main (*segment currently offline*)
 - Expand wet well (*lacks sufficient emergency capacity*)

Lift Station Capacity Evaluation

- Capacity of Existing Lift Stations not adequate.
- Future growth requires additional lift station capacity

Pump Station	Design Firm Capacity (gpm)	Total Capacity (Includes Standby) (gpm)	Existing System Analysis			Future System Analysis			Recommended Item 1.
			Peak Wet Weather Flows ¹ (gpm)	(mgd)	Surplus/ Deficiency (gpm)	Peak Wet Weather Flows ¹ (gpm)	(mgd)	Surplus/ Deficiency (gpm)	
Existing System									
Beaumont Mesa ³	1,797	3,594	2,020	2.91	-223	4,530	6.52	-2,733	Construct two 3,500 gpm and two 1,500 gpm pumps, three duty and one standby, for total capacity of 10,000 gpm.
Fairway Canyon ²	400	800	77	0.11	323	90	0.13	310	
Lower Oak Valley	1,050	1,700	965	1.39	85	1,217	1.75	-167	Construct three 625 gpm pumps, two duty and one standby, for total capacity of 1,875 gpm
Marshall Creek	1,150	2,300	778	1.12	372	1,696	2.44	-546	Construct two 1,700 gpm pumps, one duty and one standby, for total capacity of 3,400 gpm
Noble Creek	1,865	3,730	465	0.67	1,400	958	1.38	907	
Seneca Springs	900	1,350	201	0.29	699	378	0.54	522	
Upper Oak Valley	2,700	5,000	1,914	2.76	786	3,634	5.23	-934	Construct three 1,850 gpm pumps, two duty and one standby, for total capacity of 5,550 gpm
Four Seasons	1,740	3,715	442	0.64	1,298	2,616	3.77	-876	Construct three 1,350 gpm pumps, two duty and one standby, for total capacity of 4,050 gpm
Industrial Park	112	262	106	0.15	6	288	0.41	-176	Construct two 300 gpm pumps, one duty and one standby, for total capacity of 600 gpm
Olivewood	310	620	53	0.08	257	612	0.88	-302	Construct two 625 gpm pumps, one duty and one standby, for total capacity of 1,300 gpm
Future System									
Beaumont Ave South	-	-	-	-	-	1,788	2.57	-1,788	Construct three 900 gpm pumps, two duty and one standby, for total capacity of 2,700 gpm
Beaumont Crossroads	-	-	-	-	-	4,659	6.71	-4,659	Construct three 2,350 gpm pumps, two duty and one standby, for total capacity of 7,050 gpm
Brookside Ave	-	-	-	-	-	278	0.40	-278	Construct two 300 gpm pumps, one duty and one standby, for total capacity of 600 gpm
Tukwet Canyon	-	-	-	-	-	709	1.02	-709	Construct three 375 gpm pumps, two duty and one standby, for total capacity of 1,125 gpm

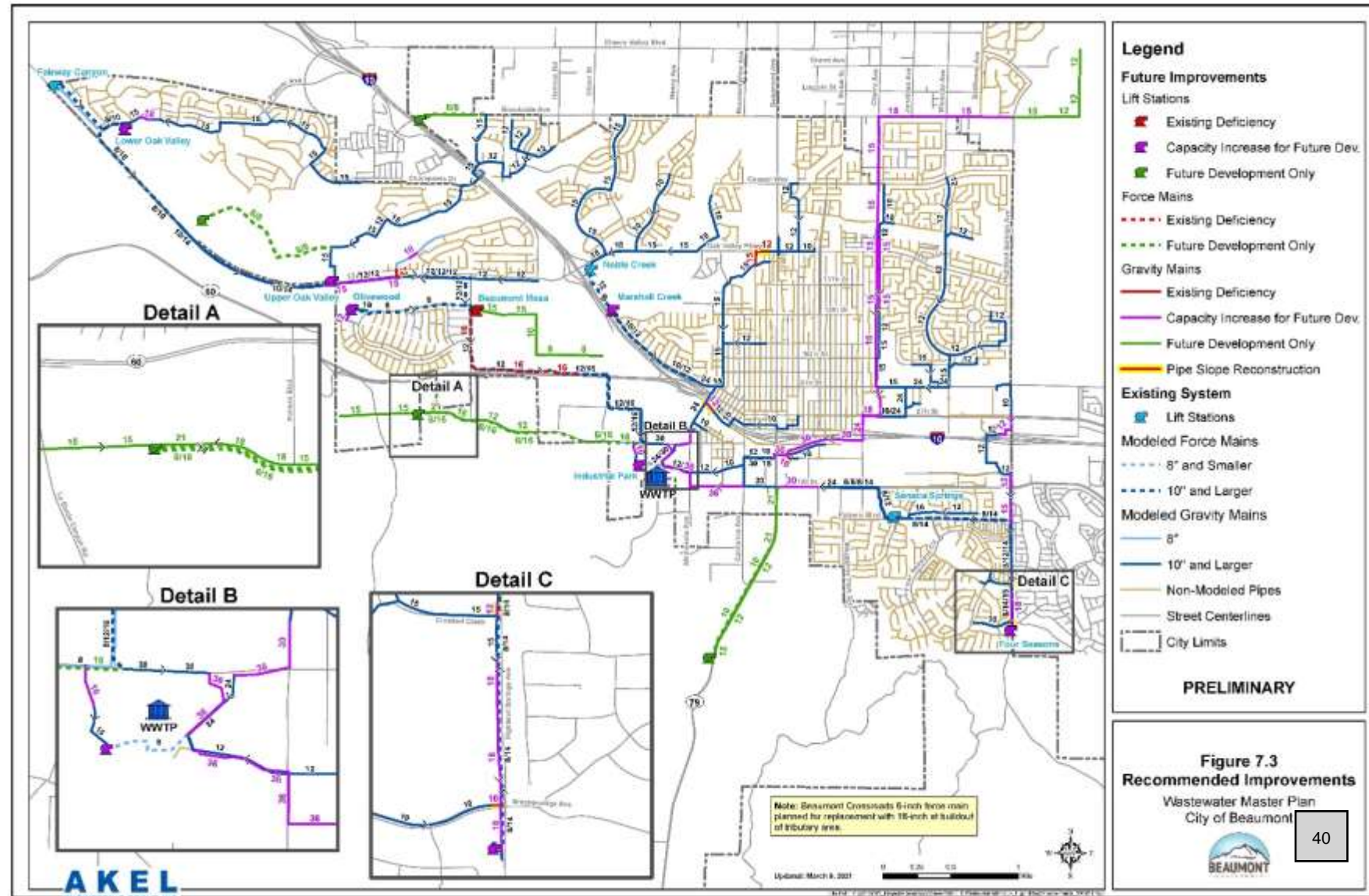


Notes:

- Maximum average hour flows extracted from sewer system hydraulic model.
- Lift station current capacity is different than Design Capacity as directed by City staff December 15, 2020.
- Pump information provided by Xylem staff March 02, 2021.

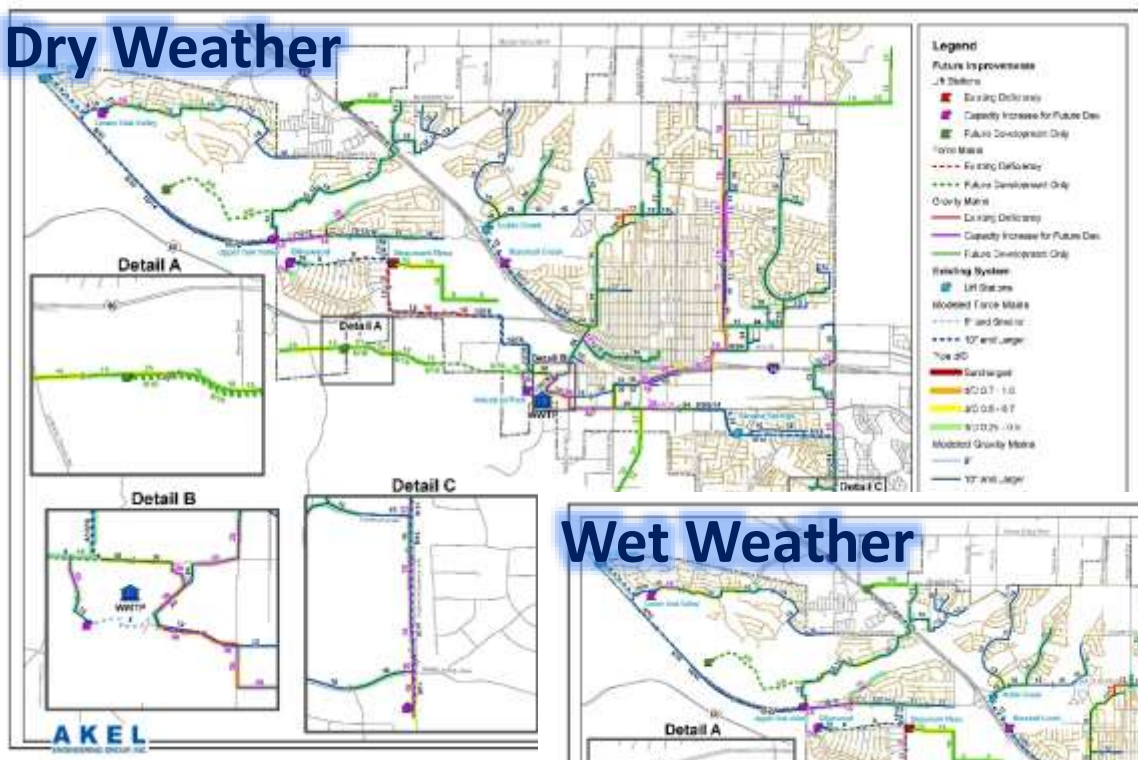
Future Capacity Improvements

- **Red** represent existing pipe deficiencies.
- **Purple** represent existing pipes needing upgrade to service growth
- **Green** lines represent New pipes to service growth



Future System Evaluations

Dry Weather



Wet Weather



- Evaluated for peak dry and wet conditions
- Validates the recommended improvements

Chapter 8 – Capital Improvement Program



Purpose of Chapter	Key Chapter Elements
<p>The purpose of this chapter is to summarize the City's Buildout and 10-Year Capital Improvement Programs.</p>	<ul style="list-style-type: none">• Unit Costs• Buildout Capital Improvement Program• 10-Year CIP

Units Costs

- Documenting Cost Assumptions

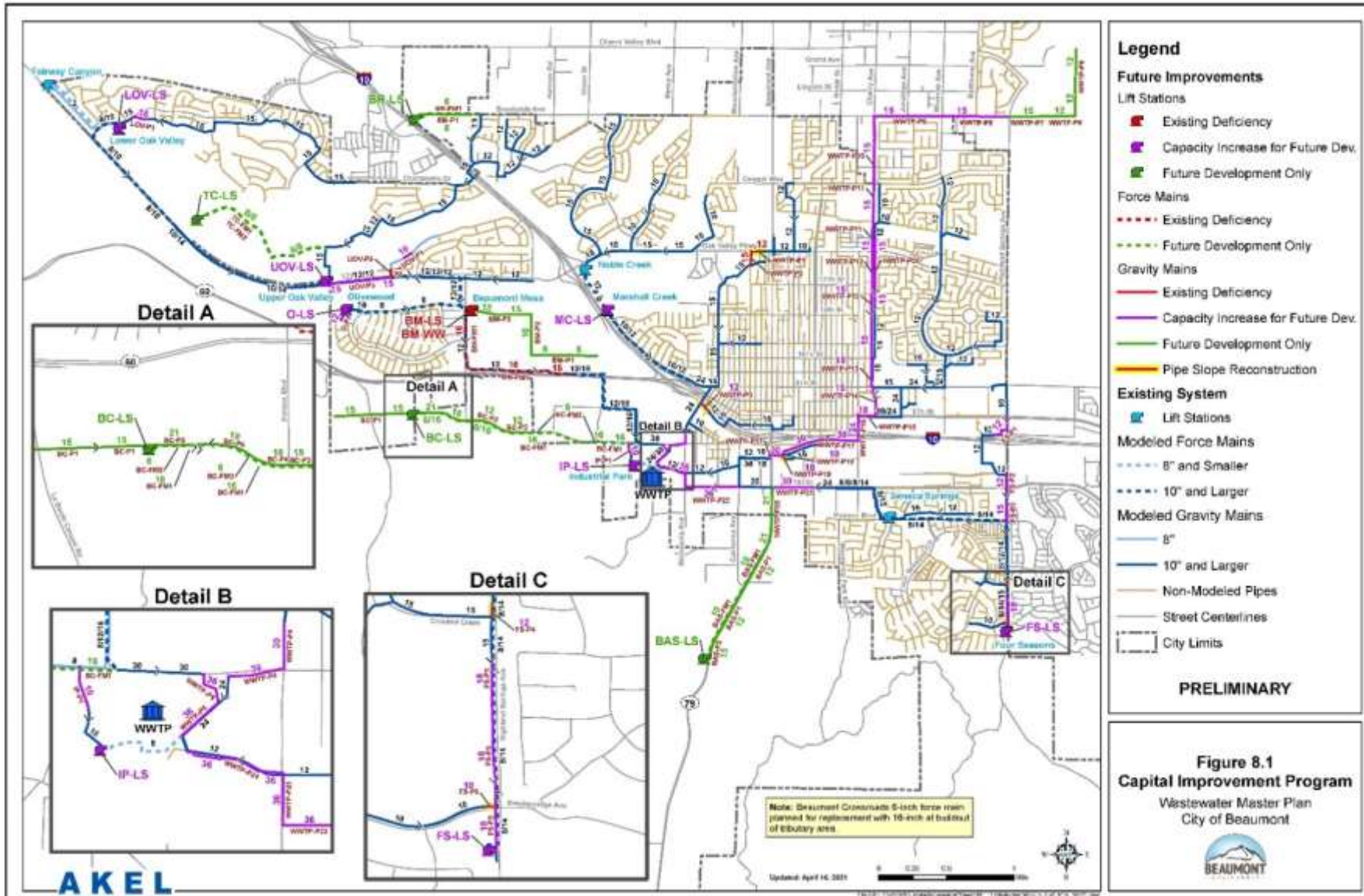
Item 1.

Pipeline	
Gravity Main¹	
Pipe Size	Cost ¹
(in)	(\$/lineal foot)
8	\$188
10	\$196
12	\$204
15	\$226
18	\$242
21	\$325
24	\$388
27	\$459
30	\$517
36	\$657
Force Main²	
6	\$215
8	\$263
10	\$277
16	\$374
Operational and Maintenance²	
Sewer Pipeline CCTV	\$2.04
Sewer Pipeline Cleaning	\$1.78
Lift Station³	
Estimated Lift Station Project Cost = $9,484*Q^2 + 308,219*Q + 358,874$, where Q is in mgd	

Notes :

1. Unit costs indexed using the Engineering News Record (ENR) Construction Cost Index of 11,628 for January 2021.
2. Sewer pipeline operational and maintenance costs based on Akel Engineering Group experience on similar projects.
3. Lift Station costs based on Akel Engineering Group experience on similar projects and escalated using the Engineering News Record (ENR) Construction Cost Index of 11,628 for January 2021.

Capital Improvement Program



- Prepare Capital Improvement Projects based on recommended improvements

10-Year CIP

CIP ID	Funding Type	Type of Improvement	Project Name	Project Description	Fiscal Year Improvement Phasing										Total Improvement Cost		
					FY 2017/18	FY 2018/19	FY 2019/20	FY 2020/21	FY 2021/22	FY 2022/23	FY 2023/24	FY 2024/25	FY 2025/26	FY 2026/27			
Gravity Main Improvements²																	
SDN-F2	Existing Capacity	Deficiency	Agnes Lane Pipeline Replacement	Replace existing 8-inch gravity main with new 12-inch gravity main in Agnes Ln			\$1,000										\$1,000
WWT-F2	Existing Capacity	Deficiency	Edgar Ave Pipeline Replacement	Replace existing 12-inch gravity main with new 15-inch gravity main in Edgar Ave		206,700											206,700
Subtotal - Gravity Main Improvements					0	206,700	\$1,000	0	0	0	0	0	0	0	0	0	207,700
Beaumont Mesa Improvements																	
	New Force Main		Force Main Design and Pump Design	Design of new force main and pump additions	450,000												450,000
			Pump Replacement/Station Construction	Construction of replacement pumps and additional pumps for LS		750,000											750,000
			Force Main Construction	Construction of new 24-inch force main		4,800,000											4,800,000
	New Wet Well		Wet Well Design	Design of New Wet Well	400,000												400,000
			Wet Well Construction	Construction of New Wet Well			4,800,000										4,800,000
Subtotal - Beaumont Mesa Improvements					850,000	4,750,000	0	4,800,000	0	0	0	0	0	0	0	0	5,600,000
Lift Station Condition Assessment Improvements																	
	Lift Station Condition			Ongoing lift station improvements to include new electrical, new pumps, repairs to wetwells, repairs to components at the LS etc.		400,000	400,000	400,000	400,000	400,000	400,000	400,000	400,000	400,000	400,000	400,000	3,600,000
Subtotal - Lift Station Condition Assessment Improvements					0	800,000	800,000	800,000	800,000	800,000	800,000	800,000	800,000	800,000	800,000	800,000	3,600,000
Operation and Maintenance Improvements																	
			CCTV Program	IEI/TV Wastewater System every 3-years (approx. 50 miles/year) - contracts & study			150,000								150,000		150,000
			Ongoing Pipeline Replacement Program	Accelerated pipeline replacement for ongoing system improvements			300,000	500,000	500,000	600,000	600,000	600,000	700,000	750,000			4,000,000
Subtotal - Operation and Maintenance Improvements					0	0	450,000	1,400,000	1,100,000	1,200,000	1,200,000	1,300,000	1,450,000	1,500,000			5,300,000
Wastewater Treatment Plant																	
	Study		Wastewater Rate Study	Rate Study for F121 - F122	200,000												200,000
	Construction		IEI Project - Flow Meters	Installation of Flow Meters at LS	200,000												200,000
	Construction		IEI System Repairs - Phase II	Various needed repairs system wide		300,000											300,000
	Design/Construction		Office Expansion	WWT office and staff workspace building			100,000										100,000
	Construction		UV Bulk Replacement	WWT UV bulk replacement				50,000									50,000
	Construction		RO Module Replacement	WWT RO module replacement					50,000								50,000
Subtotal - Wastewater Treatment Plant					400,000	300,000	550,000										1,250,000
Total Improvement Costs																	
					Fiscal Year Total	1,250,000	5,550,700	1,897,000									
					Cumulative Total	1,250,000	6,800,700	8,697,700									

- Gravity Pipeline Improvements: \$0.3 million
 - Beaumont Mesa LS Improvements: \$9.6 million
 - Lift Station Condition Assessment Improvements: \$3.6 million
 - Operation and Maintenance Improvements: \$5.1 million
 - Wastewater Treatment Plant Improvements: \$2.0 million
- 10-Year CIP Cost: \$20.6 million**



Notes:
 1. Unless noted otherwise, budgetary planning estimate provided by City staff as of June 30, 2023.
 2. Existing Wastewater System capacity deficiencies Capital Improvement Program.

Buildout CIP

Table S.1 Capital Improvement Programs
Wastewater System Plan
City of Sacramento

Program No.	Type of Improvement	Agreement	Location	Existing Facilities	Proposed Facilities	Structure	Length	Est. Cost	Est. Cost	Est. Cost	Force M. Service Location	Construction Stage*		
Upper Oak Valley Lift Station Tributary Area														
Capacity Main Improvements														
UDV-01	Force Capacity Increase	None	From Project 22 to Project Ave	18"	Replace	22	347'	125,621	128,700	165,780	202,000	Within City Limit	Approximately 200 EDCs	
Lift Station Improvements														
UDV-14	Lift Station Replacement	None	Lower Oak Valley Lift Station	-	Replace	3 @ 60" gpm	-	1,294,238	1,384,308	1,941,200	2,803,808	Within City Limit	Approximately 300 EDCs	
Subtotal - Upper Oak Valley Lift Station Tributary Area Improvements									1,514,829	1,517,088	2,147,788			
Tulsalet Canyon (Main) Lift Station Tributary Area														
Force Main Improvements														
TCA-01	New Force Main	Seawater Disposal	From Tulsalet Canyon Lift Station to approx. 1,000' w/n Upper Oak Valley Lift Station	-	New	6"	6,383'	294	1,852,858	1,002,708	1,083,300	2,578,308	Within City Limit	As Development Occurs
TCA-02	New Force Main	Seawater Disposal	From Tulsalet Canyon Lift Station to approx. 1,000' w/n Upper Oak Valley Lift Station	-	New	6"	6,389'	294	1,852,858	1,002,708	1,083,300	2,578,308	Within City Limit	As Development Occurs
Lift Station Improvements														
TCA-03	New Lift Station	Tulsalet Canyon Lift Station	-	-	New	3 @ 375 gpm	-	899,526	905,000	1,080,000	1,404,908	Within City Limit	As Development Occurs	
Subtotal - Tulsalet Canyon (Main) Lift Station Tributary Area Improvements									3,295,888	5,095,888	5,595,888			
Upper Oak Valley Lift Station Tributary Area														
Capacity Main Improvements														
UDV-01	Force Capacity Increase	None	From Project 22 to Project Ave	18"	Replace	22	347'	125,621	128,700	165,780	202,000	Within City Limit	Approximately 200 EDCs	
UDV-02	Force Capacity Increase	None	From Tulsalet Canyon Lift Station to approx. 1,000' w/n Upper Oak Valley Lift Station	6"	Replace	22	347'	125,621	128,700	165,780	202,000	Within City Limit	Approximately 200 EDCs	
UDV-03	Force Capacity Increase	None	From Project 22 to Project Ave	18"	Replace	22	347'	125,621	128,700	165,780	202,000	Within City Limit	Approximately 200 EDCs	
Lift Station Improvements														
UDV-04	Lift Station Replacement	None	Upper Oak Valley Lift Station	-	Replace	3 @ 1,800 gpm	-	1,493,300	1,483,408	4,132,100	5,449,300	Within City Limit	Approximately 2,000 EDCs	
Subtotal - Upper Oak Valley Lift Station Tributary Area Improvements									4,291,688	6,243,888	6,844,788			
Midwood Lift Station Tributary Area														
Capacity Main Improvements														
MW-01	Force Capacity Increase	None	From Project 22 to Project Ave	18"	Replace	22	347'	125,621	128,700	165,780	202,000	Within City Limit	Approximately 200 EDCs	
Lift Station Improvements														
MW-02	Lift Station Replacement	None	Midwood Lift Station	-	Replace	3 @ 600 gpm	-	987,577	997,608	1,185,300	1,548,308	Within City Limit	Approximately 100 EDCs	
Subtotal - Midwood Lift Station Tributary Area Improvements									1,095,788	1,195,288	1,711,388			

Program No.	Type of Improvement	Agreement	Location	Existing Facilities	Proposed Facilities	Structure	Length	Est. Cost	Est. Cost	Est. Cost	Force M. Service Location	Construction Stage*	
Lower Oak Valley Lift Station Tributary Area													
Capacity Main Improvements													
LOV-01	Force Capacity Increase	None	From Project 22 to Project Ave	18"	Replace	22	347'	125,621	128,700	165,780	202,000	Within City Limit	Approximately 200 EDCs
Lift Station Improvements													
LOV-02	Lift Station Replacement	None	Lower Oak Valley Lift Station	-	Replace	3 @ 600 gpm	-	1,294,238	1,384,308	1,941,200	2,803,808	Within City Limit	Approximately 300 EDCs
Subtotal - Lower Oak Valley Lift Station Tributary Area Improvements									1,514,829	1,517,088	2,147,788		
Lower Oak Valley Lift Station Tributary Area													
Capacity Main Improvements													
LOV-01	Force Capacity Increase	None	From Project 22 to Project Ave	18"	Replace	22	347'	125,621	128,700	165,780	202,000	Within City Limit	Approximately 200 EDCs
Lift Station Improvements													
LOV-02	Lift Station Replacement	None	Lower Oak Valley Lift Station	-	Replace	3 @ 600 gpm	-	1,294,238	1,384,308	1,941,200	2,803,808	Within City Limit	Approximately 300 EDCs
Subtotal - Lower Oak Valley Lift Station Tributary Area Improvements									1,514,829	1,517,088	2,147,788		

Program No.	Type of Improvement	Agreement	Location	Existing Facilities	Proposed Facilities	Structure	Length	Est. Cost	Est. Cost	Est. Cost	Force M. Service Location	Construction Stage*	
Lower Oak Valley Lift Station Tributary Area													
Capacity Main Improvements													
LOV-01	Force Capacity Increase	None	From Project 22 to Project Ave	18"	Replace	22	347'	125,621	128,700	165,780	202,000	Within City Limit	Approximately 200 EDCs
Lift Station Improvements													
LOV-02	Lift Station Replacement	None	Lower Oak Valley Lift Station	-	Replace	3 @ 600 gpm	-	1,294,238	1,384,308	1,941,200	2,803,808	Within City Limit	Approximately 300 EDCs
Subtotal - Lower Oak Valley Lift Station Tributary Area Improvements									1,514,829	1,517,088	2,147,788		
Lower Oak Valley Lift Station Tributary Area													
Capacity Main Improvements													
LOV-01	Force Capacity Increase	None	From Project 22 to Project Ave	18"	Replace	22	347'	125,621	128,700	165,780	202,000	Within City Limit	Approximately 200 EDCs
Lift Station Improvements													
LOV-02	Lift Station Replacement	None	Lower Oak Valley Lift Station	-	Replace	3 @ 600 gpm	-	1,294,238	1,384,308	1,941,200	2,803,808	Within City Limit	Approximately 300 EDCs
Subtotal - Lower Oak Valley Lift Station Tributary Area Improvements									1,514,829	1,517,088	2,147,788		

- Pipeline Capacity Improvements: \$32.3 million
 - Force Main Capacity Improvements: \$21.2 million
 - Lift Station Improvements: \$34.6 million
 - Other Wastewater System Improvements: \$10.7 million
- Total Cost: \$98.9 million**

Sewer System MP Summary Points

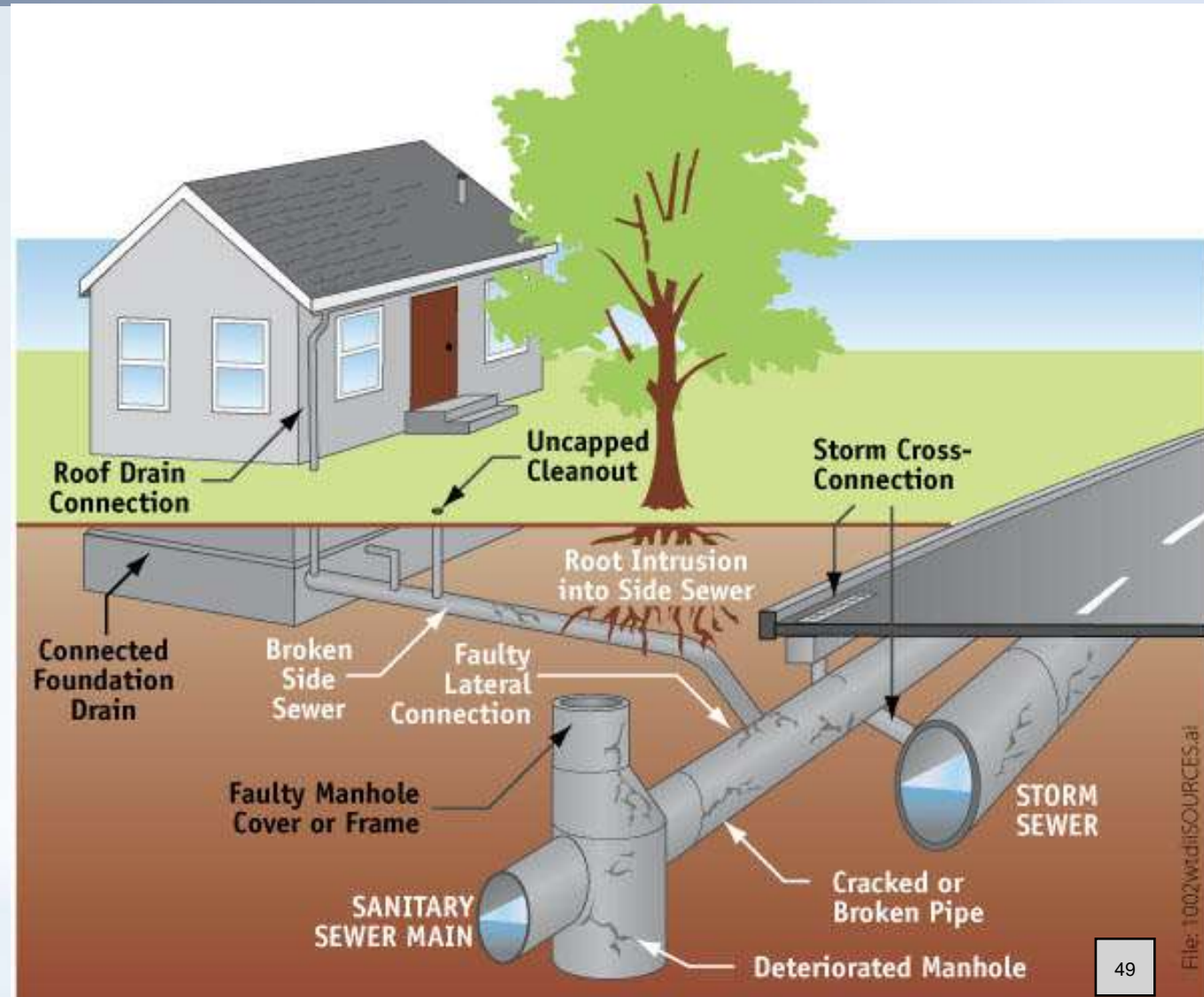
- **Serving Existing Customers**
 - Capacity of Existing Sewer System is good.
 - Capacity of Most Existing Lift Stations not adequate.
- **Extending Service to Future Growth**
 - Future Capacity Pipeline Projects are Developer Driven.
- **Deliverables**
 - Master Plan Document
 - Hydraulic Model

Next Steps!

- Rate Study
- Pipeline Condition Assessment
(State and Federal Regulations)
- Lift Station Condition Assessment
- Update Master Plans every 5 years

Next Steps: Evaluate Condition of the Sewer System

Sewer system pipes age over the years, and if not replaced on time, they will fail

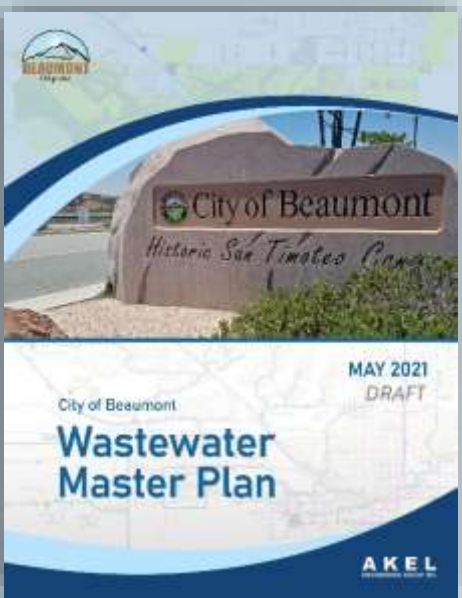


Methods for Evaluating Pipe Condition

- Age-based Replacement Program
- Risk-based Replacement Program
 - Evaluate the **Likelihood** of Failure
 - Evaluate the **Consequence** of Failure
 - Evaluate the total **Risk Score**



City of Beaumont *2021 Wastewater Master Plan*



Workshop – Draft Master Plan

June 22, 2021

