



## **Town of Beaufort, NC**

701 Front St. - P.O. Box 390 - Beaufort, N.C. 28516  
252-728-2141 - 252-728-3982 fax - [www.beaufortnc.org](http://www.beaufortnc.org)

### **Town of Beaufort Parks & Recreation Advisory Board**

**6:30 PM Thursday, March 06, 2025 - Train Depot, 614 Broad Street, Beaufort, NC 28516**  
**Monthly Meeting**

---

**Call to Order**

**Agenda Approval**

**Minutes Approval**

- [1.](#) January 2025 Minutes

**Introduction of New Members**

**Items for Discussion and Consideration - Ann Street Park**

- [1.](#) Ann Street Park - Community Input Review

**Public Comment**

**Staff Report**

**Board Comments**

**Adjourn**



**Town of Beaufort, NC**

701 Front St. - P.O. Box 390 - Beaufort, N.C. 28516  
252-728-2141 - 252-728-3982 fax - www.beaufortnc.org

**Town of Beaufort Parks & Recreation Advisory Board  
6:30 PM Thursday, January 09, 2025 - Train Depot, 614 Broad Street, Beaufort, NC 28516  
Monthly Meeting**

---

**Call to Order**

Advisory Board Members Present: Vice Chair Sheresa Elliot, Secretary Ron Dupuis, Barbara Francis-Heckman, Carol Beard, Doug Williams.

Members Absent: Chair Michael Rave & Dave Inscoes

Staff Present: Parks Coordinator Rachel Johnson, Interim Town Manager Charles Burgess

Commissioner John LoPiccolo was present.

**Agenda Approval**

Staff suggested allowing public comments on the Ann Street Park project to be during the discussion item.

Staff also asked that the agenda be amended to add election of officers. Agenda approved as presented with the staff recommended change to public comment.

**Minutes Approval**

November 2024 meeting minutes were approved as presented. Barbara Francis-Heckman made the motion to approve; seconded by Doug Williams.

**Public Comment**

**Items for Discussion and Consideration:**

**Ann Street Park** – Staff introduced a conceptual design created based on the board and public’s input at the November meeting. Town Engineer Sam Bell created the concept design.

Additional discussion points for tonight’s meeting

1. Possibility of floating docks
2. Further discussion about the desire for continued water access
3. The addition of an observation deck on the dock area.

Sheresa: Discussion needed about location of benches and parking spots

Barbara: Costs of this project vs. other projects identified in comprehensive plan.

Public Discussion points:

1. Left side of side walk: Where does it continue to the grass? Rachel reviewed the drawing and clarified the position of the proposed sidewalk.
2. How far can you go into the channel with the floating dock? The Army Corps of Engineers will have to answer those types of questions
3. Can the plan include more shade trees? The plan is still in development and the planners can look at that.
4. Can the benches face towards the water more?
5. Can benches be included on the observation deck?
6. This is a good plan for residents to get to the water and have water access
7. No docking. Will this be a day dock or drop-off location?
8. The plan shows a parking re-design. Are there enough parking spaces?
9. Is the parking area a permeable surface?
10. Should parking be limited to 35-40 minutes, as an example? And, how does that get enforced?
11. Water access is a community builder and it is great that this park is happening.
12. Will this area just be a hang-out location after hours? Again, how will that be enforced?
13. Water access is top-of-mind for many residents
14. How will this be included in the budget? Does it come from the Parks and Rec budget (Yes) and grants will also be leveraged to pay for the location. Recreation fees will be included.
15. Can we make sure that local plants, like more Live Oaks are used for shade trees?
16. The public was very thankful that the process was transparent and that meetings and public comments were being considered.

**Next Steps**

1. Additional public comment session to be held in February that incorporates the ideas, inputs and suggestions received at the January meeting.
2. Additional ideas will be considered and added into the costs of the plans and included in the budget.
3. The Board of Commissioners will be presented with the plans and then the budget will be developed for the project.
4. Commissioners, CAMA, and the Army Corp of Engineers will need be contacted. Cost estimates will be developed from all inputs from public and regulating agencies.
5. Demolition can be done by the town of Beaufort Public Works. This will save money and they are excited to start!

6. Topsoil will need to be brought in for walkways leading up to the dock. Caution: make sure w<sup>1.</sup> know what the make-up of the topsoil is and that it is of good quality.

### **Election of Officers**

Chair Michael Rave submitted his resignation because he is moving to another town. He thanked the Committee for its great work and Rachel expressed her thanks for Michael volunteering his time and knowledge to the Committee for so long. Thank you, Michael, for your service and please visit us often.

This was also Barbara Francis-Heckman last meeting as she is moving to another town as well. We all thank Barbara for her service and hopes she comes back to visit us from time to time.

With that, a new Chair and officers needed to be identified and voted on.

The following are the new Chair and officers:

1. Sheresa Elliot – Chair (NEW)
2. Doug Williams- Vice Chair (NEW)
3. Ron Dupuis – Secretary (Current)

A motion was made by Carol Beaird, second by Barbara. Vote was unanimous YES

### **Staff Report**

- a. Charles Burgess, Beaufort Interim Town Manager announced the donation of land along West Beaufort Road. This is a significant acquisition because it aligns with the Advisory Committee's vision of a future Beaufort Greenway.
- b. Beau Coast donated a path from Lennoxville Road into Beau Coast West which winds through woodland and along a pond.
- c. Activities are happening in support of the Art Wall/Fence, Arbor Day, and Eagle Scout Family Day
- d. Need to plan for additional people on the Advisory Committee members. The BOC will appoint 2 new members to replace the newly vacated seats by Barbara Francis-Heckman and Michael Rave. One member appointed in October 2024 has yet to be able to attend a meeting.
- e. NEXT MEETING: Community Conversations: Thursday February 13th, 2025. 4:30PM to 6:30PM at the Train Station

### **Board Comments**

### **Adjourn**

The meeting adjourned at 7:52 p.m.

# Community Conversations: Ann Street Park

## Public Input Review

Compilation of all the comments and feedback received at the February 2025 event. Participants were asked to write their comments on sticky notes and/or directly on the maps provided. In addition staff received several emails from residents who could not attend the meeting. This input has also been included. Two residents submitted their own drawn design suggestions.

**Attendance:** Approximately 100 (includes email input)

**Staff Present:** Parks Coordinator/PIO Rachel Johnson, Town Engineer Sam Bell, Interim Town Manager Charlie Burgess, Assistant Town Manager/Town Clerk Elizabeth Lewis, Fire Chief Tony Ray, Finance Director Christi Wood and Police Chief Paul Burdette.

**Mayor/BOC Present:** Mayor Sharon Harker, Commissioner Melvin Cooper, Commissioner John LoPiccolo

**Parks & Recreation Advisory Board Members Present:** Sheresa Elliot, Doug Williams, Carol Baird, Ron Dupuis, Lora Fasolino and Taylor McCune

Participants were asked to weigh in on having a floating dock as a part of the final design or not. All comments were in favor of an observation dock at this location.

### Observation Dock Only Design: 28

18 people commented that the current in this location is strong and dangerous

3 people commented that a floating dock would be a duplication of existing Town facilities offered at nearby locations

- Current is dangerous
- Current is fast
- Current is strong
- Current cranks through here
- Floating dock is expensive & redundant
- There is already a kayak launch nearby
- Redundant with the Broad Street dock so close
- Ask Bonehenge Maritime Museum for input
- The current is strong and difficult to maneuver in small boats and kayak. I know this from experience with friends who couldn't get back to our dock next door.
- Taylor's Creek is better for kayaking.

### Observation Dock with a Floating Dock Design: 18

9 people made comments specific to the desire to add a kayak launch

3 people made comments requesting kayak storage racks

- Please include a floating dock for kayaking and short-term tie-ups to pick up/drop off passengers.
- Safe water access
- Give access to boaters – let them decide if they can do it safely or not
- Not including a floating platform will not keep people from trying to access the water, it will just make it more dangerous for people who do.

**Other comments/suggestions/requests by topic**

**Parking**

- Golf cart parking - 4 spaces suggested
- No parking spaces needed
- Just need a car drop off area and no parking spaces
- How many days a year will there be 7 cars?
- Beaufort is bigger than folks in the historic area, parking is a must.
- No parking – vagrant issues already
- Parking is needed
- Concerned that the hotel is 50-100 parking spaces short of what they need.

**Lighting**

- 5 requests for Dark Sky Lighting
- 3 suggestions for lights with shades to draw down light
- Lighting on path & sculptures/art

**Vegetation/Plants/Trees/Gardens**

- No trees on left side facing the water  
(Gate access required – left side by water)
- Bee/butterfly friendly flowers and bushes
- No trees – Keep the view
- Preserve the open vista
- Don't obstruct the view
- Open lawn area
- Oak Bosque Maples
- Native trees
- Flowering trees
- Plant different color grasses
- Trees around the parking area
- Leave the existing crepe myrtles
- Recreate a maritime forest
- Are the gardens historic?

**Water Source**

- Sprinklers – If no, don't use sod

- Hose bibs
- Water source for plants
- Irrigation

### **Art/Sculpture/Memorials/Signs**

- 2 requests for Memorial Pavers
- Memorial Garden
- Pathways & paved areas serve as memorial gardens (donated/inscribed by community members) – Same for benches & structures
- Beaufort Oyster Industry plaque
- Historical plaque commemorating the original bridge location
- Plaque about the fishing industry
- Sculptures by local artists and/or from Beaufort schools
- Use local artists for art and sculptures
- Include a sculpture garden
- Informational signs about local aquatic life/birds/geography and land use
- More sculpture pads and rotating exhibits
- Install sculpture base slabs with standard bolt patterns – Arts in Beaufort

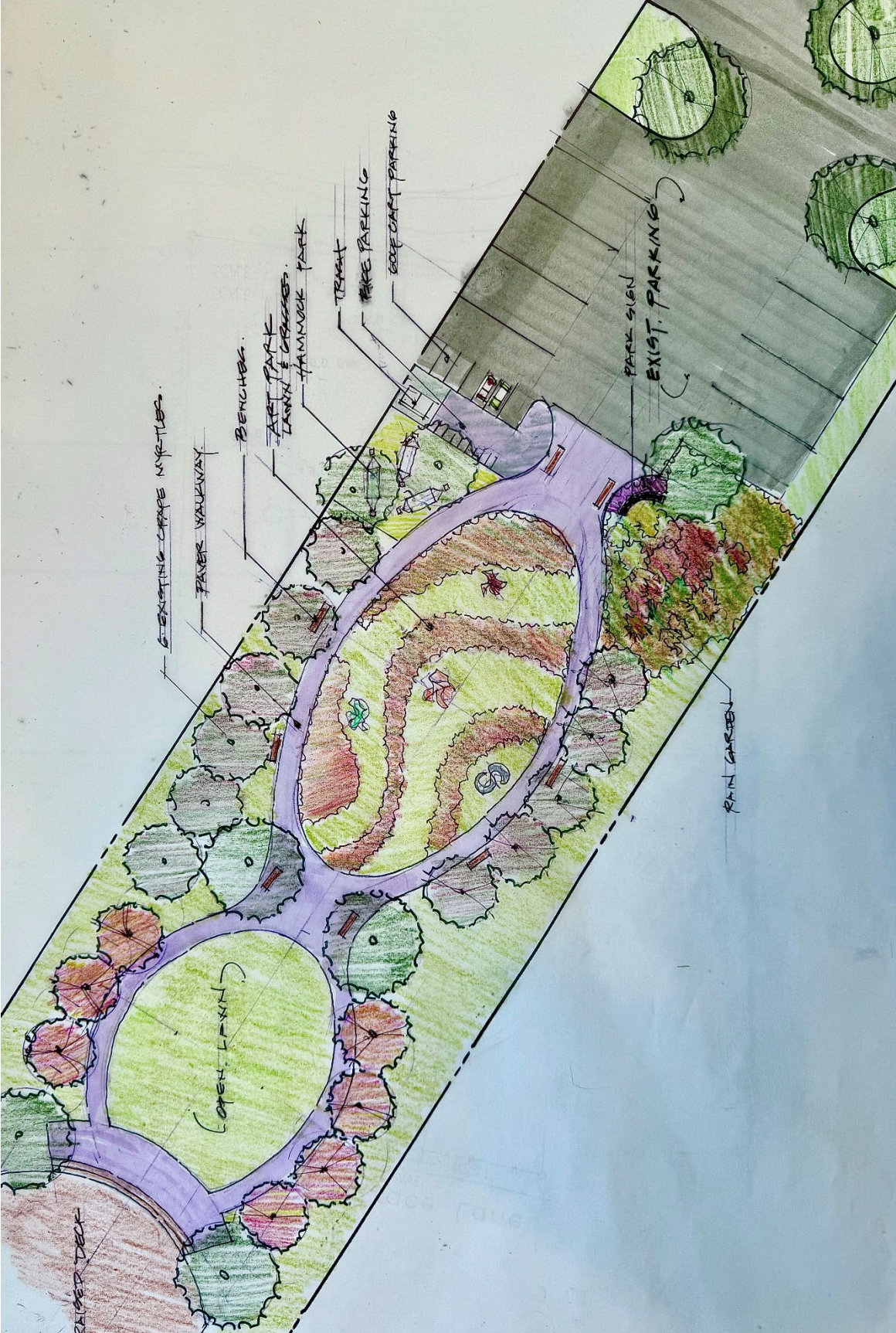
### **Shade**

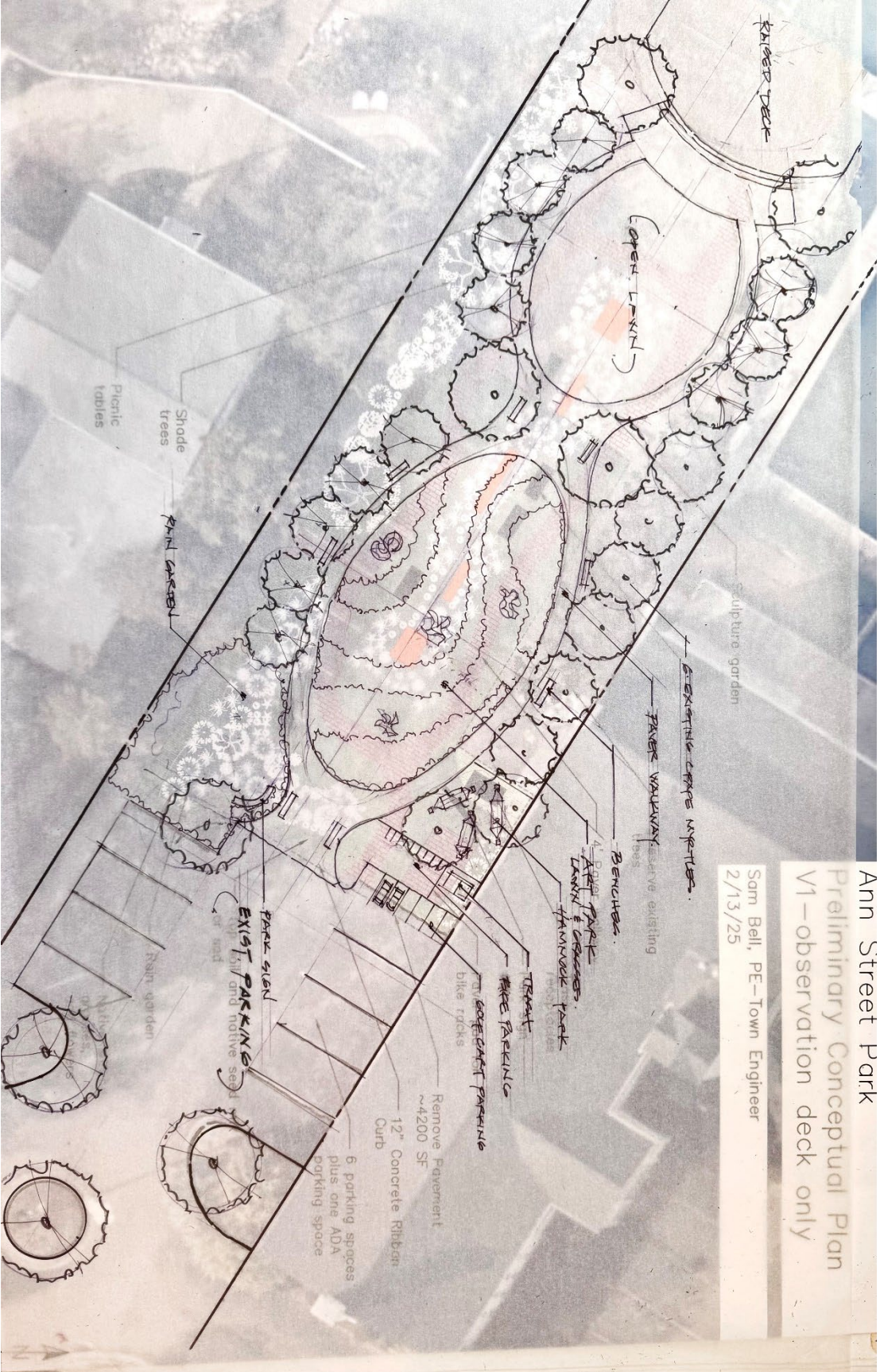
- Don't obstruct the view
- No shade structure on dock
- 6 people request shade sails on the dock
- Shaded area
- Preserve the view

### **Other:**

- 2 requests for covered swings facing the water
- Hammock area
- Picnic tables made of Plywood
- 2 requests for benches to face the water/sunset
- Walking paths around gardens
- Public participation through donations: plant/paint/participate
- No covered swings
- Two requests that if there are trash cans that they must be emptied twice a day
- Remove trash cans
- 4 people requested benches and tables built into the dock
- 2 people requested restrooms – 2 gender neutral with changing tables
- Gazebo
- No gazebo
- Historically correct benches
- Flooding mitigation for stormwater





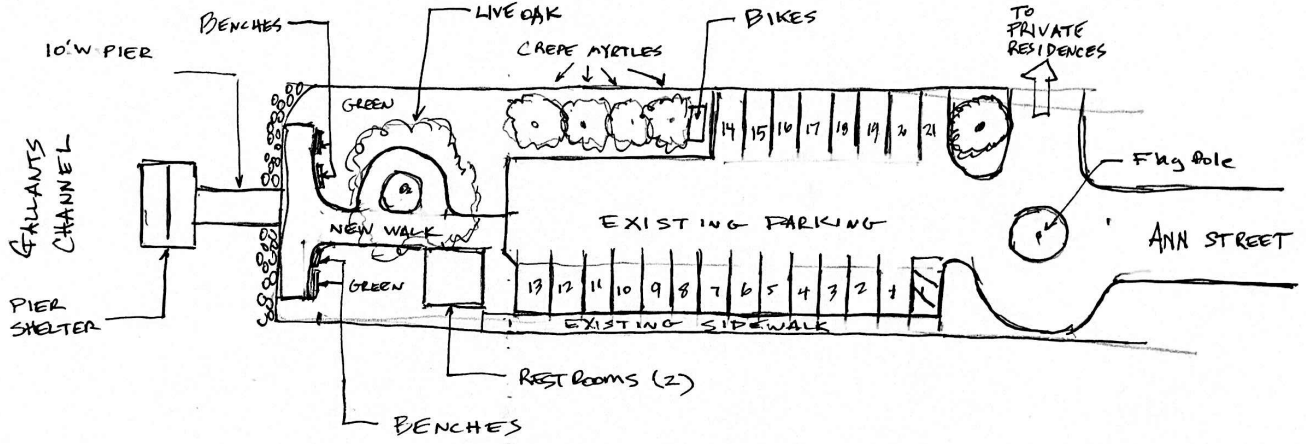


Ann Street Park  
 Preliminary Conceptual Plan  
 V1—observation deck only

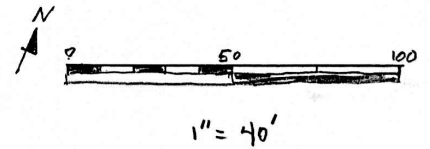
Sam Bell, PE—Town Engineer  
 2/13/25

Submitted via Email by Ralph Merrill:

# ANN STREET PARK CONCEPT

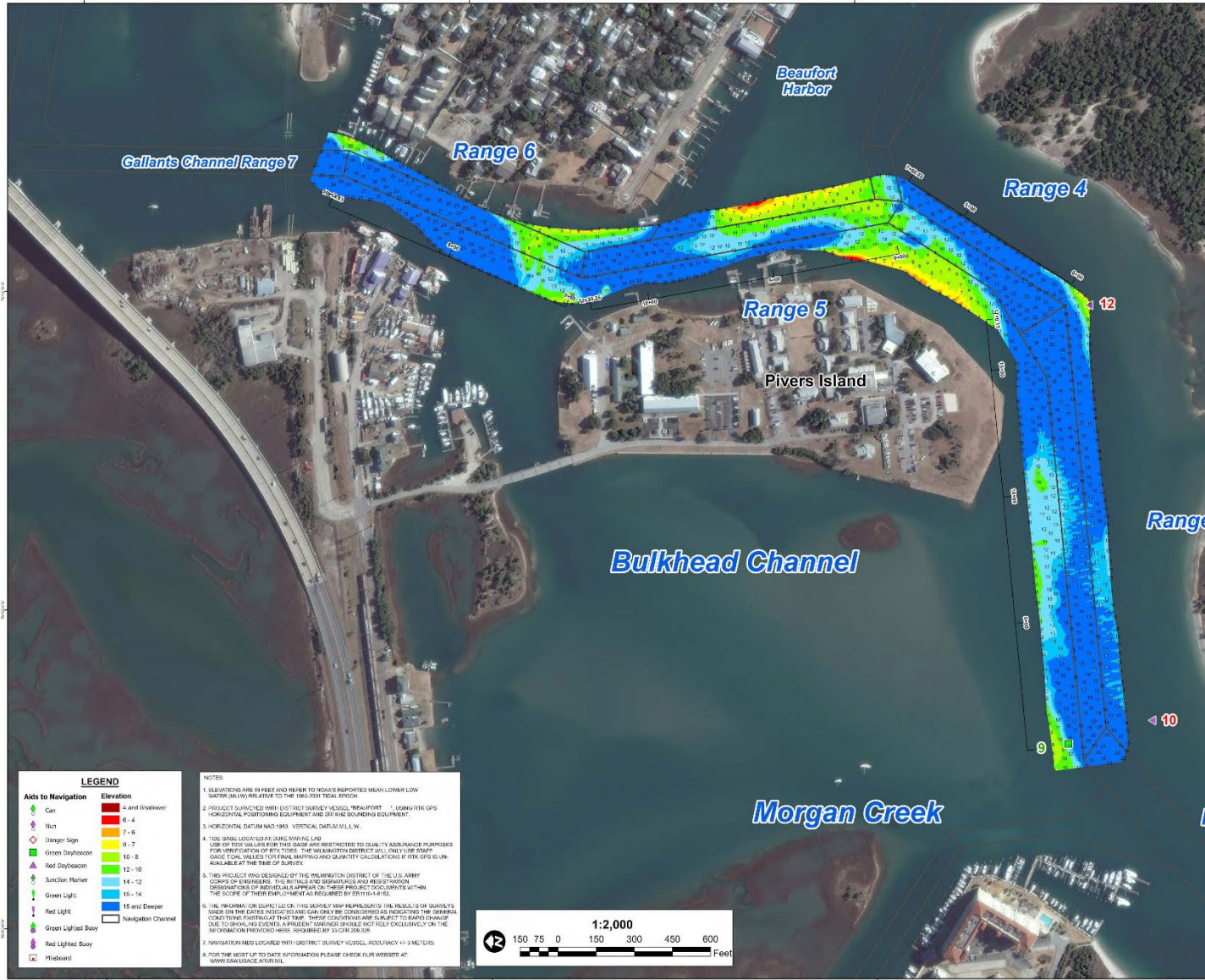


PROPOSED BY RALPH MERRILL  
312 CRAVEN AVE. 2/12/2025



### Channel Information

Based on the map from the Army Corps of Engineers (January 2025) the channel is right at the end of the former pier and the depth is approximately 20 feet +/- per the map.



### Public Safety Feedback:

The Police Department deferred to the Fire Department (FD) as the FD conducts water rescues.

The FD cannot endorse having a floating dock at proposed Ann Street Park. Please find a few concerns below:

1. The waterway has swift moving currents, especially during tide changes making docking challenging.
2. Swift currents through the waterway would add to the challenges of water rescue.
3. This is a busy waterway with commercial and recreational boating traffic adding to docking challenges.
4. Who would be responsible for policing boaters docking for extended periods of time, even potentially abandoning vessels at dock?
5. Would a floating dock encourage use as a dinghy dock for “Harbor of Safe Refuge.”
6. Increased Town insurance liability.

**Coastal Fed Meeting Discussion Items:**

- Strong Current
- Deep Water
- Riprap removal
- Living Shoreline Options
- Some shoreline options are only available with an observation dock only
- Upland plantings
- Natural route
- Stormwater outfall

# Ann Street Park Preliminary Conceptual Plan V1—observation deck only

Sam Bell, PE—Town Engineer  
2/13/25

