



**CITY OF ANGLETON**  
**CITY COUNCIL SPECIAL MEETING**  
**WITH ANGLETON BETTER LIVING CORPORATION**  
**AND PARKS & RECREATION BOARD**  
**120 S. CHENANGO STREET, ANGLETON, TEXAS 77515**  
**TUESDAY, DECEMBER 08, 2020 AT 5:00 PM**

---

## **MINUTES**

THE FOLLOWING REPRESENTS THE ACTIONS TAKEN BY THE ANGLETON CITY COUNCIL WITH ANGLETON BETTER LIVING CORPORATION AND PARKS & RECREATION BOARD IN THE ORDER THEY OCCURRED DURING THE MEETING. THE CITY COUNCIL OF ANGLETON, TEXAS CONVENED IN A SPECIAL MEETING ON TUESDAY, DECEMBER 08, 2020, AT 5:00 P.M., IN THE ANGLETON CITY HALL COUNCIL CHAMBERS, 120 S. CHENANGO, ANGLETON, TEXAS.

### **DECLARATION OF A QUORUM AND CALL TO ORDER**

With a quorum present, Mayor pro-tem Wright called the Council Meeting to order at 5:18 P.M., Mayor pro-tem Wright, Council Member Booth, Council Member Gongora, Council Member Svoboda, and Council Member Townsend were present. Mayor Perez was absent.

With a quorum present, Vice Chairman John Wright called the ABLC Meeting to order at 5:08 P.M., Members John Wright, Ellen Eby, William Jackson, Chris Peltier, and Charlyn Rodgers were present. Chairman Jason Perez and Member George Rau were absent.

With a quorum present, Chairman Chris Peltier called the Parks & Recreation Board Meeting to order at 5:08 P.M., Chairman Chris Peltier and Members Bill Ahlstrom, Clara Dannhaus, Bonnie McDaniel, Jamie Moreno, Steven Sebok, and Terry Roberts were present. Council Liaison Mark Gongora was also present.

### **REGULAR AGENDA**

1. Discussion and possible action on Lakeside Park plan with ABLC and Parks & Recreation Board. The presentation was made by Elizabeth Gilbert of Clark Condon.



# CITY OF ANGLETON LAKESIDE PARK

12.08.2020  
E&A PROJECT 114-704



CLARK CONDON



## SITE PLAN

### LEGEND

- ① MAIN PAVILION
- ② EVENT LAWN
- ③ CANOE / KAYAK LAUNCH
- ④ PLAYGROUND & FITNESS STATION
- ⑤ AQUATIC PLANTING EDGE
- ⑥ FISHING PIER
- ⑦ AUXILIARY SHADE STRUCTURE
- ⑧ BOARDWALK
- ⑨ PICNIC AREA
- ⑩ PARKING
- ⑪ WILDFLOWER MIX
- ⑫ CONNECTION TO SCHOOL
- ⑬ PUMP ENCLOSURE
- ⑭ BUFFER PLANTING
- ⑮ BUTTERFLY GARDEN
- ⑯ SANDY BEACH
- ⑰ OVERLOOK POINT
- ⑱ WEIR CROSSING



LAKESIDE PARK  
CITY OF ANGLETON

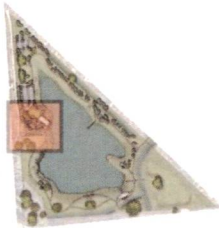
CLARK CONDON

**EVENT & PLAY  
ENLARGEMENT PLAN**

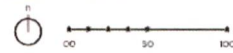
**LEGEND**

- ① OPEN LAWN
- ② MAIN PAVILION
- ③ EVENT LAWN
- ④ FITNESS STATION
- ⑤ PLAYGROUND
- ⑥ BERMS
- ⑦ CANOE / KAYAK LAUNCH
- ⑧ DROP OFF
- ⑨ PARKING

**ENLARGEMENT KEY MAP**



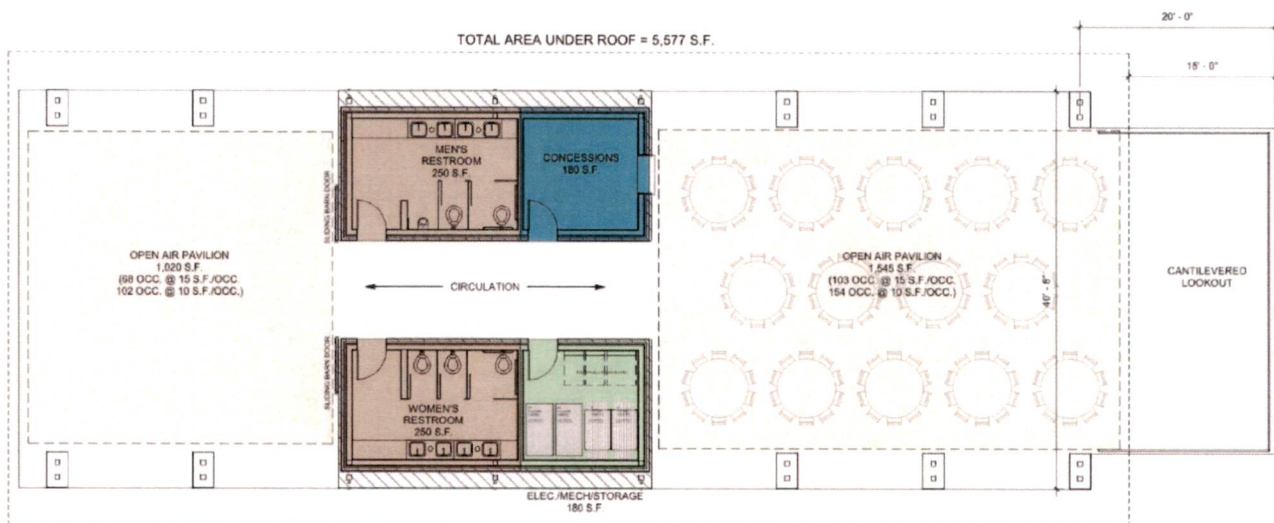
**LAKESIDE PARK**  
CITY OF ANGLETON



**CLARK CONDON**

**3**

**PAVILION  
FLOOR PLAN**



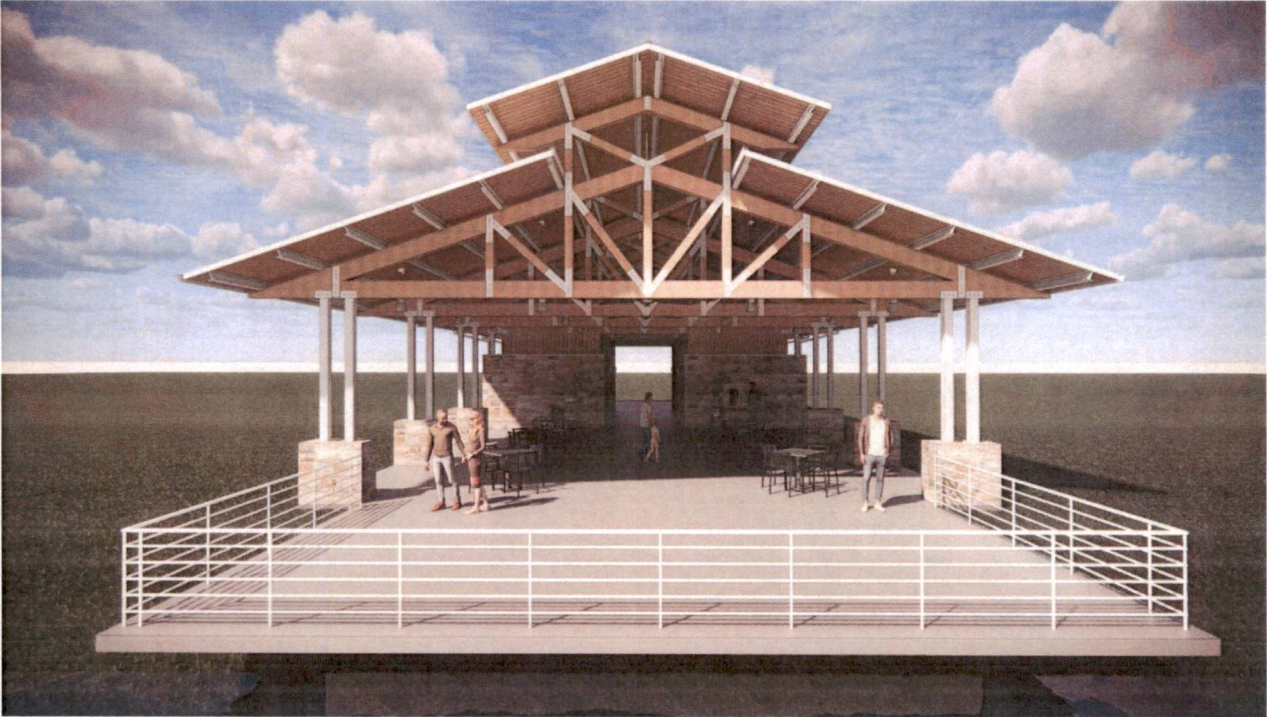
**LAKESIDE PARK**  
CITY OF ANGLETON



**CLARK CONDON**

**4**

PAVILION: PERSPECTIVE VIEW



LAKESIDE PARK  
CITY OF ANGLETON



CLARK CONDON

PAVILION: PERSPECTIVE VIEW



LAKESIDE PARK  
CITY OF ANGLETON



CLARK CONDON

PAVILION: PERSPECTIVE VIEW



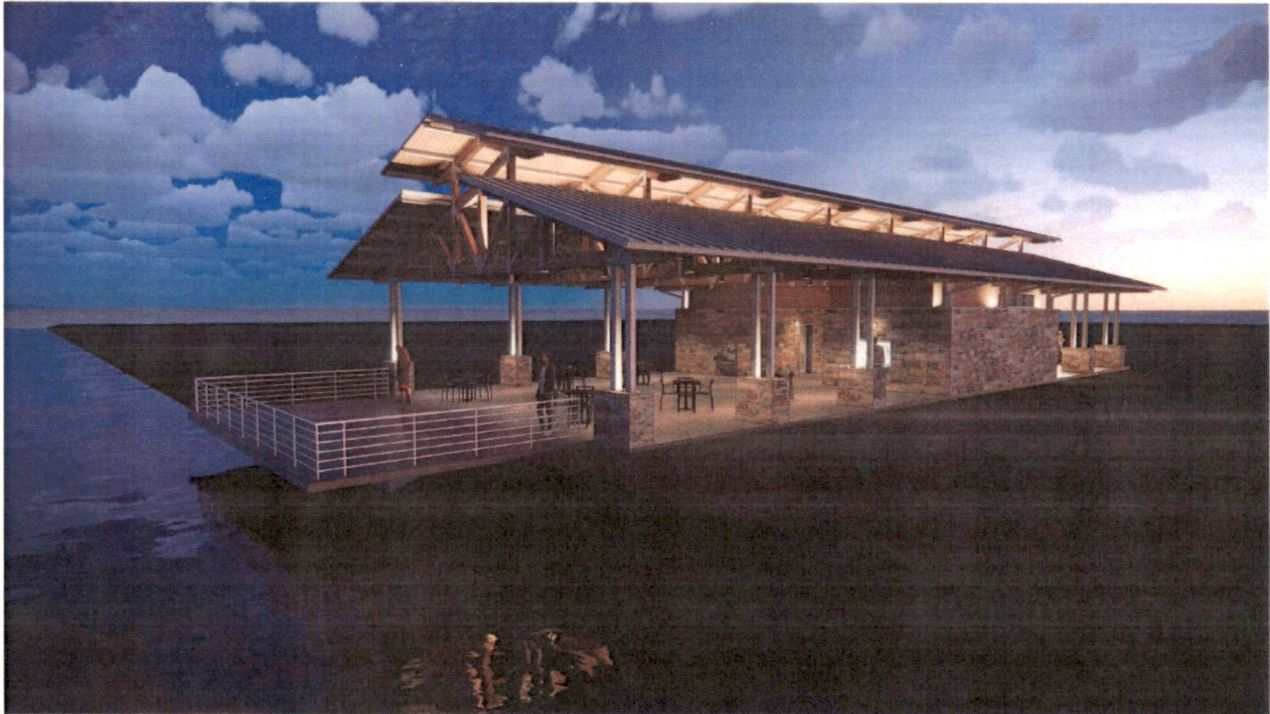
LAKESIDE PARK  
CITY OF ANGLETON



CLARK CONDON

7

PAVILION: PERSPECTIVE VIEW - NIGHT



LAKESIDE PARK  
CITY OF ANGLETON



CLARK CONDON

8

PAVILION: PERSPECTIVE VIEW - NIGHT



LAKESIDE PARK  
CITY OF ANGLETON



CLARK CONDON

9

EVENT AREA: PERSPECTIVE VIEW



LAKESIDE PARK  
CITY OF ANGLETON



CLARK CONDON

10

EVENT AREA: PERSPECTIVE VIEW



LAKESIDE PARK  
CITY OF ANGLETON



CLARK CONDON

11

EVENT AREA: PERSPECTIVE VIEW



LAKESIDE PARK  
CITY OF ANGLETON



CLARK CONDON

12

EVENT AREA: PERSPECTIVE VIEW



LAKESIDE PARK  
CITY OF ANGLETON



CLARK CONDON

13

EVENT AREA: PERSPECTIVE VIEW



LAKESIDE PARK  
CITY OF ANGLETON



CLARK CONDON

14

EVENT AREA: PERSPECTIVE VIEW



LAKESIDE PARK  
CITY OF ANGLETON



CLARK CONDON

15

EVENT AREA: PERSPECTIVE VIEW - NIGHT



LAKESIDE PARK  
CITY OF ANGLETON



CLARK CONDON

16

EVENT AREA: PERSPECTIVE VIEW - NIGHT



LAKESIDE PARK  
CITY OF ANGLETON



CLARK CONDON

17

EVENT AREA: PERSPECTIVE VIEW - NIGHT



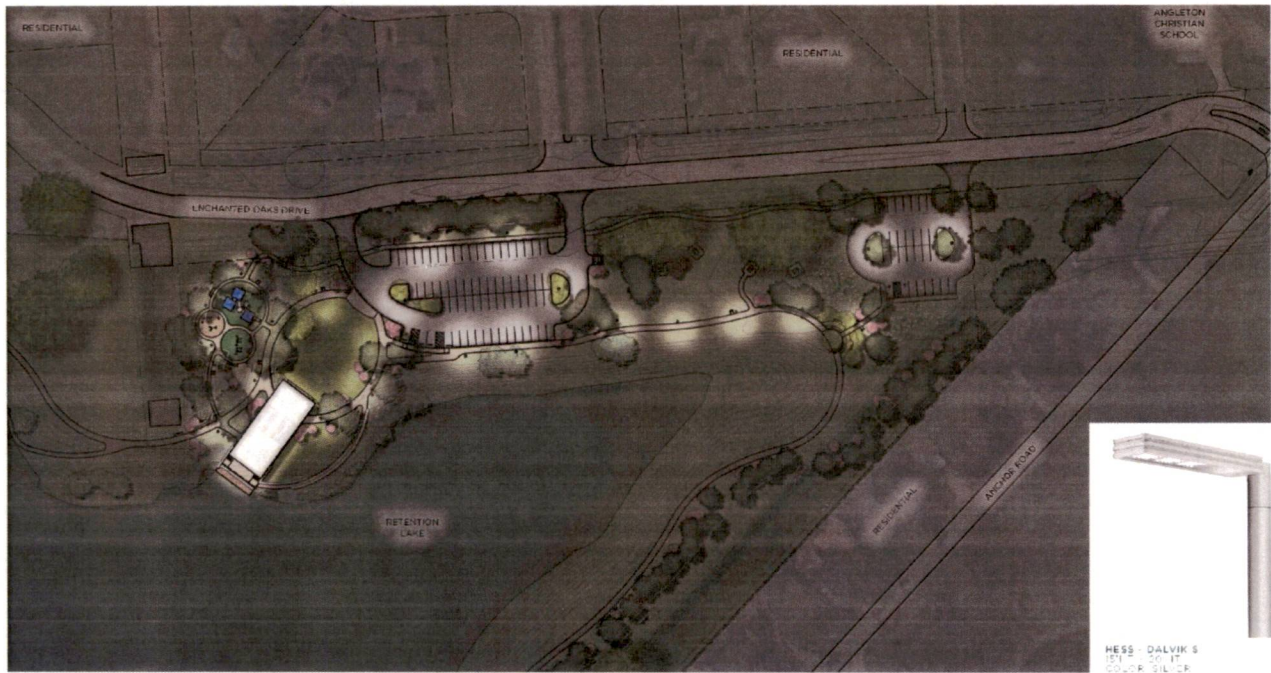
LAKESIDE PARK  
CITY OF ANGLETON



CLARK CONDON

18

**EVENT & BUTTERFLY GARDEN**  
LIGHTING LAYOUT PLAN



**LAKESIDE PARK**  
CITY OF ANGLETON



**CLARK CONDON**

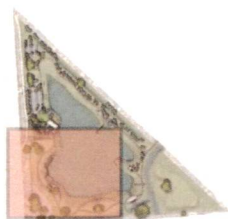
19

**BOARDWALK**  
ENLARGEMENT PLAN

- LEGEND**
- ① PLAYGROUND & FITNESS STATION
  - ② BOARDWALK
  - ③ PICNIC AREA
  - ④ AQUATIC PLANTING EDGE
  - ⑤ STONE WALL & OVERLOOK POINT
  - ⑥ SANDY BEACH
  - ⑦ BENCH SEATING
  - ⑧ WILDFLOWER MIX



**ENLARGEMENT KEY MAP**



**LAKESIDE PARK**  
CITY OF ANGLETON



**CLARK CONDON**

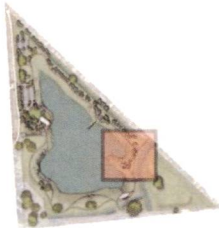
20

**CANOE/KAYAK LAUNCH**  
ENLARGEMENT PLAN

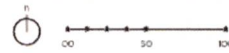
**LEGEND**

- ① SHADE STRUCTURE
- ② SANDY BEACH
- ③ TRAIL / MAINTENANCE DRIVE
- ④ EXISTING GRAVEL MAINTENANCE DRIVE
- ⑤ BUFFER PLANTING
- ⑥ AQUATIC PLANTING EDGE
- ⑦ BENCH SEATING
- ⑧ WILDFLOWER MIX

ENLARGEMENT KEY MAP

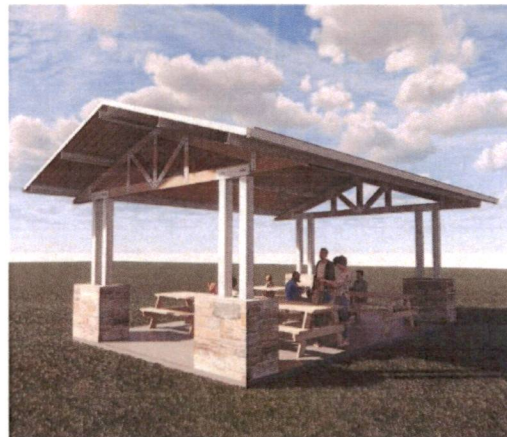
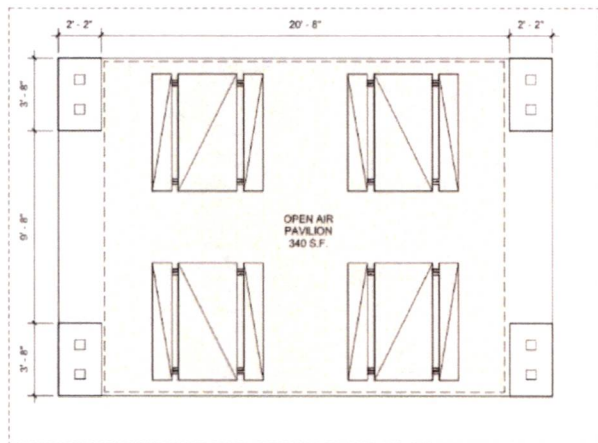


LAKESIDE PARK  
CITY OF ANGLETON



CLARK CONDON

**SHADE STRUCTURE**

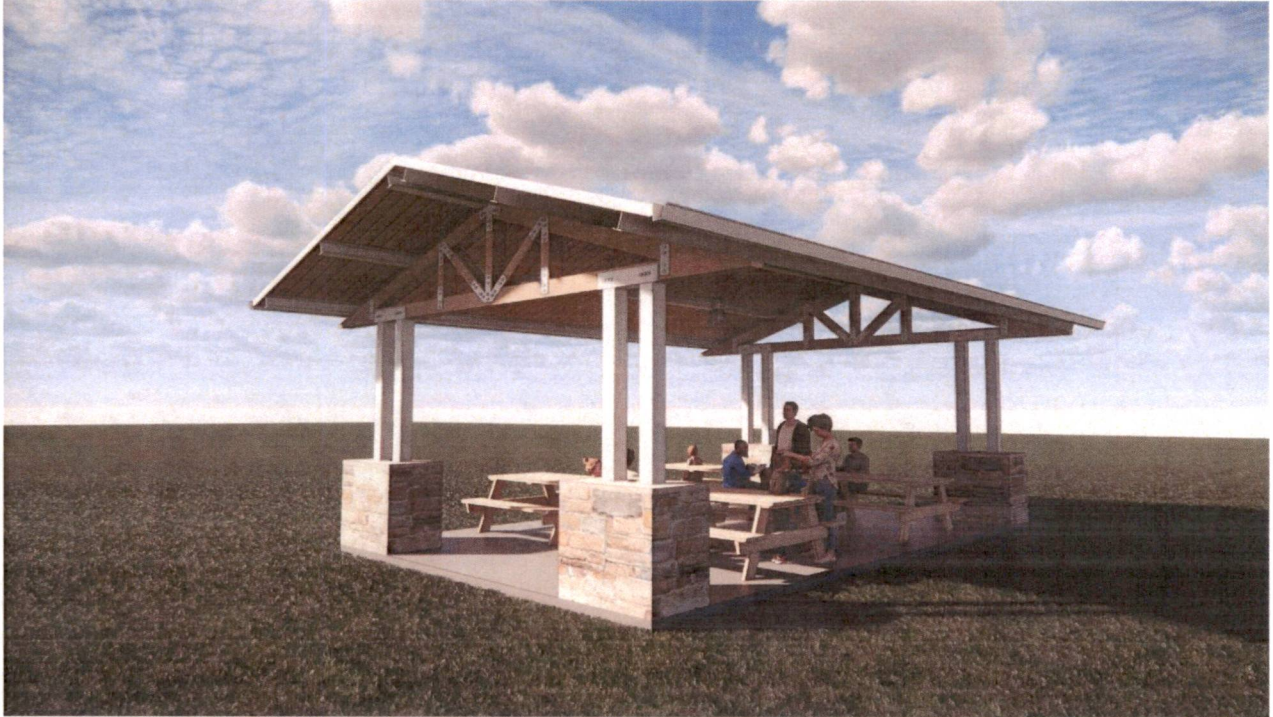


LAKESIDE PARK  
CITY OF ANGLETON



CLARK CONDON

SHADE STRUCTURE: PERSPECTIVE VIEW



LAKESIDE PARK  
CITY OF ANGLETON



CLARK CONDON

23

SHADE STRUCTURE: PERSPECTIVE VIEW - NIGHT



LAKESIDE PARK  
CITY OF ANGLETON



CLARK CONDON

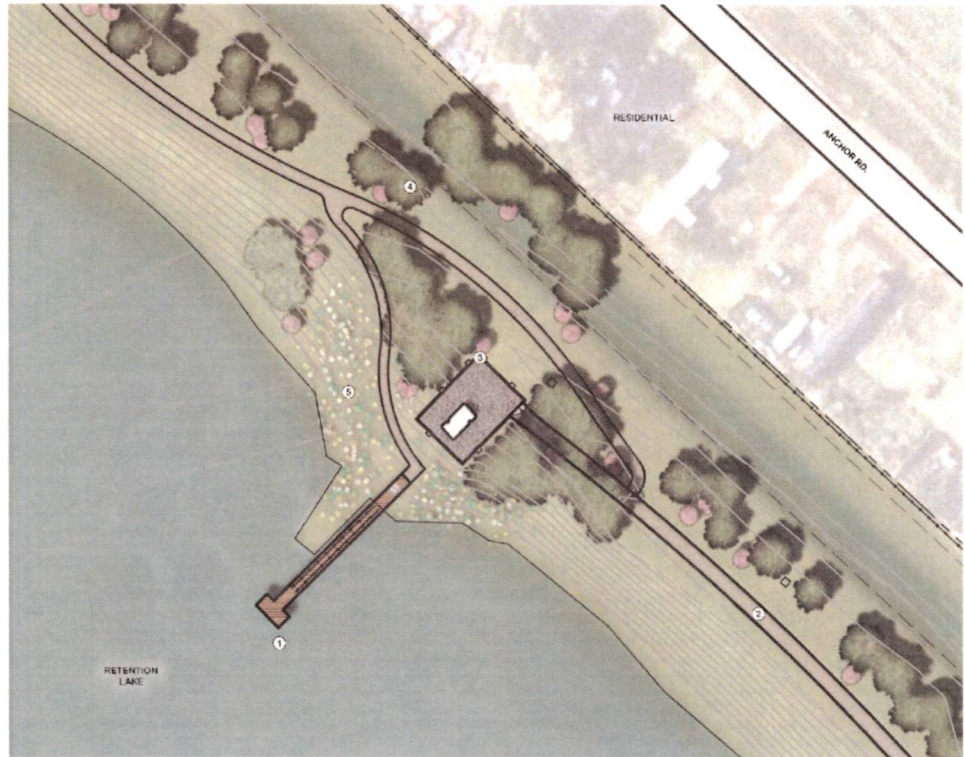
24

**FISHING PIER  
ENLARGEMENT PLAN**

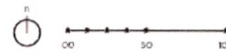
**LEGEND**

- ① FISHING PIER
- ② TRAIL / MAINTENANCE DRIVE
- ③ PUMP ENCLOSURE
- ④ BUFFER PLANTING
- ⑤ WILDFLOWER MIX

**ENLARGEMENT KEY MAP**



LAKESIDE PARK  
CITY OF ANGLETON



CLARK CONDON

25

**BUTTERFLY GARDEN  
ENLARGEMENT PLAN**

**LEGEND**

- ① PICNIC AREA
- ② OVERFLOW PARKING
- ③ WILDFLOWER MIX
- ④ BUTTERFLY GARDEN & OVERLOOK POINT
- ⑤ BUFFER PLANTING
- ⑥ BENCH SEATING
- ⑦ ACCESS TO SCHOOL

**ENLARGEMENT KEY MAP**



LAKESIDE PARK  
CITY OF ANGLETON



CLARK CONDON

26

TREES



MEXICAN PLUM  
PRUNUS MEXICANA



POSSUMHAW HOLLY  
ILEX DECIDUA



NATCHEZ CRAPE MYRTLE  
LAGERSTROEMIA FAIRIEI NATCHEZ



SOUTHERN WAX MYRTLE  
MYRICA CERIFERA



CEDAR ELM  
BIMUS CRASSIFOLIA



AMERICAN ELM  
ULMUS AMERICANA



AMERICAN SYCAMORE  
PLATANUS OCCIDENTALIS



WATER OAK  
QUERCUS NIGRA



SHUMARD OAK  
QUERCUS SHUMARDII



LIVE OAK  
QUERCUS VIRGINIANA



BALD CYPRESS  
TAXODIUM DISTICHUM

AQUATICS



PICKEREL WEED  
PONTEDERIA CORDATA



ARROWHEAD  
SAGITTARIA LATIFOLIA



COMMON RUSH  
JUNCUS EFFUSUS

SHRUBS & GROUNDCOVER



FLAME ACANTHUS  
ANISACANTHUS QUADRIFIDUS WRIGHTII



LILAC CHASTETREE  
VITEX ARBUS CASTUS



INDIGO SPIRES SALVIA  
SALVIA INDIGO SPIRES



DWARF YAUPON HOLLY  
ILEX VOMITORIA STOKES DWARF



MEXICAN MINT MARIGOLD  
TAGETES LUCIDA



GIANT TRADESCANTIA  
TRADESCANTIA PALLIDA PURPLE HEART



GREGG'S MISTFLOWER  
CONOCLINIUM GREGGII



BICOLOR IRIS  
IRIS BICOLOR



BLACK-EYED SUSAN  
RUDBECKIA HIRTA



MEXICAN BUSH SAGE  
SALVIA LEUCANTHA



SANDY LEAF FIG IVY  
FICUS LIRIODORA



FIREBUSH  
HAEMELIA PATENS



TRAILING LANTANA  
LANTANA ROSEA YELLOW



VIBURNUM  
VIBURNUM DENTATUM



SWAMP MILKWEED  
ASCLEPIAS INCARNATA

ORNAMENTAL GRASSES



GULF COAST MUHLY  
MUHLENBERGIA CAPILLARIS



LINDHEIMER MUHLY  
MUHLENBERGIA LINDHEIMERI

**PARK MATERIALS**



TREX COMPOSITE DECKING  
COLOR: SADDLE



DECOMPOSED GRANITE



CONCRETE PAVING W/ MEDIUM SHOT  
BLAST FINISH



BROOM FINISHED CONCRETE PAVING



FIBAR  
PLAYGROUND MULCH SURROUND



FIBARPIP  
PLAY SURFACE RUBBER PLAY SURFACE



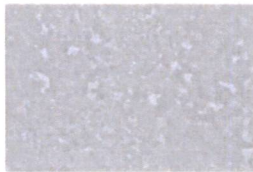
ALUMINUM POST W/  
CEDAR HORIZONTAL FENCING  
10" TYPICAL POST TO POST



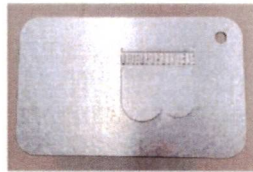
ACCENT ANIMAL  
PRINT STAMPS

NEVERWET  
INVISIBLE  
PAVEMENT PAINT

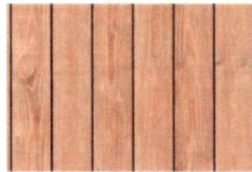
**PAVILION MATERIALS**



STUCCO PANEL STEEL  
GALVANNEAL



PVC COATED STEEL POST AND PIPE  
SERIES GALVANNEAL



WOOD SHINGLES  
STAINED CEDAR



STONE VENEER  
BLEND GREY / BLACK  
COLOR IN GREY / LIGHT BEIGE

**PLAYGROUND & FITNESS EQUIPMENT**



LANDSCAPE STRUCTURES  
PLAYGROUND



LANDSCAPE STRUCTURES  
SWING



LANDSCAPE STRUCTURES  
ADULT PLAYGROUND  
EQUIPMENT  
TALENT WHEELS



FREENOTES HARMONY PARK  
BOTANICAL COLLECTION

FURNITURE & LIGHTING



TREE TOP PRODUCTS  
TRADITIONAL RECYCLED PLASTIC BENCH  
50" L X 18" W X 24" H



HESSE - DALVIK 5  
10" X 10" X 10" X 10"  
SILVER



MADRAX  
10" X 10" X 10" X 10"  
SILVER



TREE TOP PRODUCTS  
TRADITIONAL RECYCLED PLASTIC BENCH TABLE  
50" L X 18" W X 24" H

TREE TOP PRODUCTS  
TRADITIONAL RECYCLED PLASTIC BENCH TABLE  
50" L X 18" W X 24" H



BOLLARDS USA  
30" X 3"

LAKESIDE PARK | MATERIALS

CLARK CONDON

31

SITE PLAN

LEGEND

- ① MAIN PAVILION
- ② EVENT LAWN
- ③ CANOE / KAYAK LAUNCH
- ④ PLAYGROUND & FITNESS STATION
- ⑤ AQUATIC PLANTING EDGE
- ⑥ FISHING PIER
- ⑦ AUXILIARY SHADE STRUCTURE
- ⑧ BOARDWALK
- ⑨ PICNIC AREA
- ⑩ PARKING
- ⑪ WILDFLOWER MIX
- ⑫ CONNECTION TO SCHOOL
- ⑬ PUMP ENCLOSURE
- ⑭ BUFFER PLANTING
- ⑮ BUTTERFLY GARDEN
- ⑯ SANDY BEACH
- ⑰ OVERLOOK POINT
- ⑱ WEIR CROSSING



LAKESIDE PARK  
CITY OF ANGLETON

CLARK CONDON

32

ADJOURNMENT

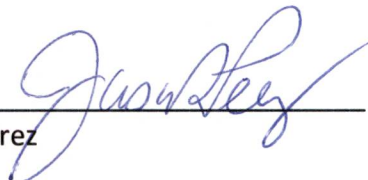
The meeting was adjourned at 6:28 P.M.

These minutes were approved by Angleton City Council on this the 9th day of February 2021, upon a motion by Mayor pro-tem Wright, seconded by Council Member Booth. The motion passed on a 6-0 vote.


These minutes were approved by Angleton Better Living Corporation on the XX day of February 2021, upon a motion by Director, seconded by Director. The motion passed on a 6-0 vote.

These minutes were approved by Angleton Parks & Recreation Board on this XX day of February 2021, upon a motion by Council Member, seconded by Council Member. The motion passed on a 6-0 vote.

CITY OF ANGLETON, TEXAS

  
\_\_\_\_\_  
Jason Perez  
Mayor

ATTEST:

  
\_\_\_\_\_  
Frances Aguilar, TRMC, CMC  
City Secretary

